

## My Action Plan for SE 20th St between 104th Ave SE and 108th Ave SE

Are you feeling inspired to take action to address the traffic concerns on SE 20th St between 104th Ave SE and 108th Ave SE? Here is a checklist to help you get started:

- ☐ Talk to my neighbors and share the City's findings and recommendations
- ☐ List interested neighbors who want to help me with efforts:

---



---



---

- ☐ Decide the educational programs we want to participate in:
- ☐ Neighborhood Speed Watch
- ☐ Radar Dolly
- ☐ Sign and Pledge Program
- ☐ Contact City staff to set-up a training session and get materials

Notes:

---



---



---



---



---



---



---

## More info

Find out more about these recommendations in our **Residential Traffic Guidebook** or by logging on to **Streets are for Everyone (SAFE)**—Neighborhood Traffic Safety Services' blog.

Blog: <http://bellevuentss.wordpress.com>

Guidebook: [http://www.bellevuewa.gov/pdf/Transportation/Guidebook\\_Web.pdf](http://www.bellevuewa.gov/pdf/Transportation/Guidebook_Web.pdf)



# TRAFFIC ACTION PLAN

2016-024 SE 20th St between 104th and 108th



BELLEVUE  
NEIGHBORHOOD  
TRAFFIC  
SAFETY  
SERVICES

Thank you for contacting Neighborhood Traffic Safety Services and letting us know your concerns with vehicle speeds and cut through traffic in your neighborhood. We have completed a field review and data analysis and compiled this information, as well as our recommendations, into this Traffic Action Plan.

### What we found:

- **Data Collected**—Traffic studies conducted in 2016 on SE 20th St recorded 85% of motorists traveling at or below 27 mph, with average speeds recorded at approximately 21 mph. These speeds are similar to those recorded in past speed studies. On an average mid-week day, approximately 375 vehicles are using SE 20th St.
- **Collisions**—A three-year collision study was also conducted along SE 20th St and there were no reported crashes.
- **Roadway Characteristics**—SE 20th St is one of six east/west streets connecting the main north/south routes of 104th Ave SE and 108th Ave SE, which serve this area of over 1200 homes. It is approximately 20' wide with no sidewalk, curb or gutter on either side of the street. The speed limit is posted on the street in the form of two sets of pavement markings.

### Our recommendations based on field reviews, data collection, and engineering analysis:

- **Education and Encouragement**—Resident-led education and encouragement campaigns can be effective at reducing traffic speeds especially in neighborhoods such as yours, where community engagement levels are high. We would encourage you to participate in some of our education programs available for residents' participation, which are detailed inside this report, as well as to share your concerns with other residents in your community.
- **Walkway Improvements**—Our investigation indicates that because the majority of motorists continue to drive the street appropriately, traffic calming measures, such as speed humps, are not warranted at this time. However, our review shows that a dedicated walking area would be an appropriate traffic safety improvement for your street. In 2003, residents on your street overwhelmingly opposed a sidewalk proposal through the Neighborhood Enhancement Program (NEP). Many were concerned with the removal of landscaping in the public right-of-way and the loss of parking on one side of the street that would be necessary for a sidewalk installation. If residents on your street now feel that the benefits of a walkway would outweigh the trade-offs of losing parking and some landscaping, I would encourage you to email [TransportationCIP@bellevuewa.gov](mailto:TransportationCIP@bellevuewa.gov) to request inclusion into the Neighborhood Sidewalks Program.

Regarding your concerns about commuter traffic within neighborhoods during East Link construction, the Neighborhood Traffic Mitigation Committee is continuing its work to develop a plan that helps to discourage it but to encourage safe driving if it does. The City plans to collect strategic, routine neighborhood traffic data before and during major construction activities that occur on Bellevue Way and 112<sup>th</sup> Avenue SE. The results of the data collection will be shared with the Committee and public and will ultimately inform Committee discussions on mitigation tools. Summaries of the Committee's meetings are posted to <http://bellevuewa.gov/12292.htm> if you'd like more background information. Feel free to contact John Murphy, Associate Planner, Transportation Department at 425-452-6967 or [jmurphy@bellevuewa.gov](mailto:jmurphy@bellevuewa.gov) should you have specific questions.

Again, thank you for sharing your concerns with us. We look forward to working with you and your neighbors on the education programs suggested to address your traffic concerns. Please feel free to contact me at [lglas@bellevuewa.gov](mailto:lglas@bellevuewa.gov) or 425-452-2841 to participate in any of the education programs described in this Traffic Action Plan.

Sincerely,

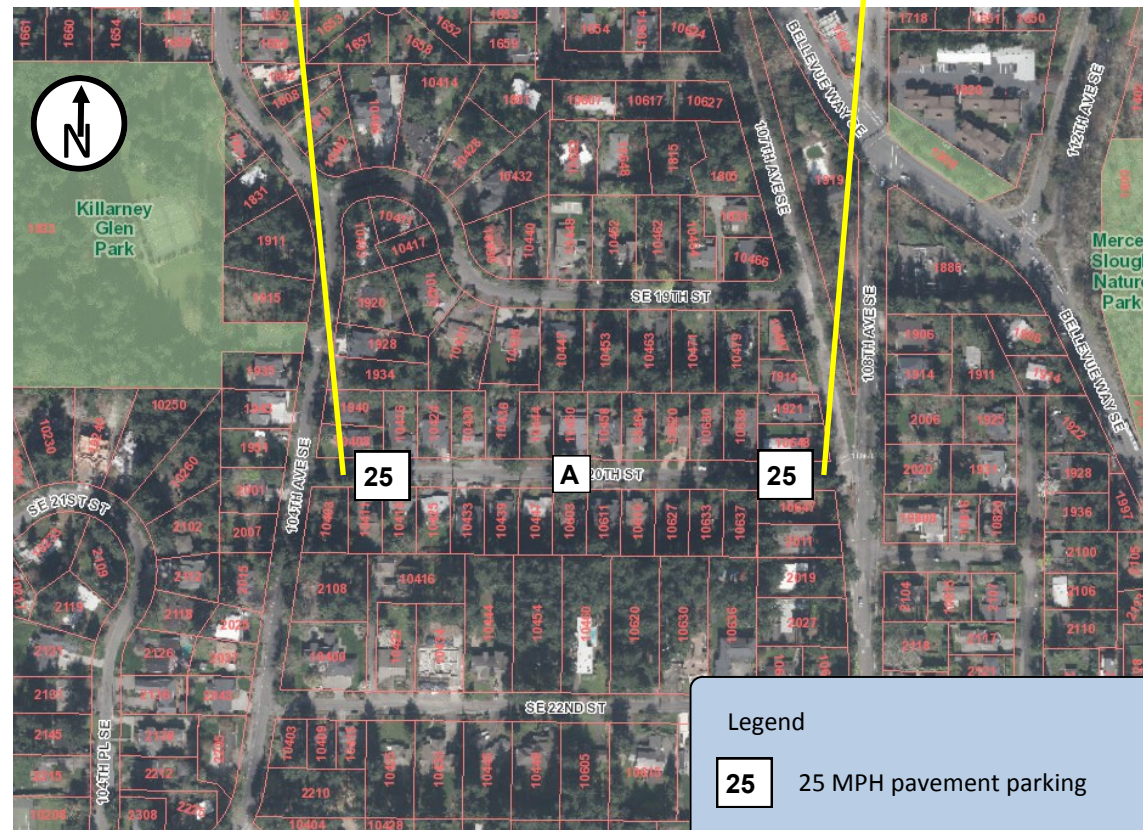
Linda Glas, P.E., Neighborhood Traffic Safety Services Project Manager



SE 20th St facing east



SE 20th St facing west



Legend

25 25 MPH pavement parking

## Summary of Findings

Date	Location	Mid-Week Average Daily Traffic^	Average Speeds		85th% Speeds*	
			Eastbound	Westbound	Eastbound	Westbound
7/12-7/18	A SE 20th St	373	21	20	27	26

^Mid-Week Average includes data between Tuesday and Thursday

\*85% of vehicles traveling at or below this speed

## Customized Traffic Action Plan for SE 20th St between 104th Ave SE and 108th Ave SE

### Education, Encouragement, and Enforcement

By educating the community and encouraging safe driving, we can begin to change driver behavior and reduce vehicle speeds.

- Educate the Community
- Enhance Neighborhood Identity
- Reduce Excessive Vehicle Speeds

### Neighborhood Speed Watch



Using a borrowed radar unit, you record information about vehicles you observe traveling at or above 30 mph. NTSS staff then locate the registered owners of the vehicles and send a letter to them asking for their cooperation in reducing their speed. A partner to assist you with the data collection is recommended.

### Radar Dolly



You can borrow and place a radar dolly on your street for up to two weeks. This unit gives motorists feedback on the speed at which they are driving, encouraging them to obey the speed limit. Should you like to borrow the radar dolly, please request it by calling (425) 452-6457 or sign up on [www.bellevuewa.gov/radardolly.htm](http://www.bellevuewa.gov/radardolly.htm).

### Sign and Pledge Program



This program involves lending communities portable signs that encourage motorists to respect the neighborhood, drive responsibly, and drive 25 mph. The signs are moved by community volunteers from place to place throughout the neighborhood every few days. The second part of the program is a neighborhood pace car program. Residents who pledge to drive responsibly and drive the speed limit on all neighborhood streets receive magnetic bumper stickers or window clings to place on their vehicles. As these motorists drive 25 mph on residential streets, they set the pace for drivers behind them.

