

My Action Plan for NE 28th St near 165th Ave NE

Are you feeling inspired to take action to address the traffic concerns on NE 28th St near 165th Ave NE? Here is a checklist to help you get started:

- ☐ Talk to my neighbors and share the City's findings and recommendations
- ☐ List interested neighbors who want to help me with efforts:

- ☐ Decide the educational programs we want to participate in:
 - ☐ Neighborhood Speed Watch
 - ☐ Radar Dolly
 - ☐ Sign and Pledge Program
- ☐ Contact City staff to set-up a training session and get materials

Notes:

More info

Find out more about these recommendations in our **Residential Traffic Guidebook** or by logging on to **Streets are for Everyone (SAFE)**—Neighborhood Traffic Safety Services' blog.

Blog: <http://bellevuentss.wordpress.com>

Guidebook: http://www.bellevuewa.gov/pdf/Transportation/Guidebook_Web.pdf



TRAFFIC ACTION PLAN

2016-020 NE 28th St near 165th Ave NE



BELLEVUE
NEIGHBORHOOD
TRAFFIC
SAFETY
SERVICES

Subject: Speeding Concerns on NE 28th St near 165th Avenue NE

Thank you for contacting Neighborhood Traffic Safety Services and letting us know your concerns with vehicle speeds on NE 28th St near 165th Ave NE. We have completed a field review and data analysis and compiled this information, as well as our recommendations, into this Traffic Action Plan.

What we found:

- **Data Collected**—Speed studies were conducted on NE 28th St east of 165th Ave NE in 2016. These studies show 85% of motorists are traveling at or below 30 mph in the eastbound direction and at or below 29 mph in the westbound direction on this 25 mph roadway. Our speed studies also show average speeds along NE 28th St of 25 mph in both the eastbound and westbound directions.
- **Collisions**—A three-year collision study was also conducted along NE 28th St between 164th Ave NE and 169th Ave NE, and found no reported crashes.
- **Roadway Characteristics**—NE 28th St is a primary entrance/exit for approximately 225 households. Most of the street is approximately 38' wide with a 5' shoulder on the north side. Vehicles are periodically illegally parked over the white painted fogline on the north side of the street. East of 168th Pl NE, the street significantly narrows to approximately 20' before turning onto 169th Ave NE.

Our recommendations based on field reviews, data collection, and engineering analysis:

- **Education and Encouragement**—Resident-led education and encouragement campaigns can be effective at reducing traffic speeds. We would encourage you to participate in some of our education programs available for residents' participation detailed inside this report, as well as to share your concerns with other residents in your community and you HOA board, if one exists. If no HOA is currently active, we encourage you to check out www.bellevuewa.gov/pdf/Neighborhoods/mc382A_Neighborhood_Organizing_Guide_WEB.pdf for information on how to form an organization in order to strengthen the community.
- **Engineering**—Although we found speeds to be typical for a neighborhood street, such as NE 28th St, an engineering solution might further reduce speeds, increase pedestrian safety and support residents' need for legal parking on the street. Planning and designing a project for NE 28th will take staff resources not currently available, as we have a number of other locations prioritized ahead of your street at this time. We will keep NE 28th St on our work plan of other potential traffic improvements and update you when resources become available.

Again, thank you for sharing your concerns with us. We look forward to working with you and your neighbors on the education programs suggested to address your traffic concerns. Please feel free to contact me at lglas@bellevuewa.gov or 425-452-2841 to participate in any of the education programs described in this Traffic Action Plan.

Sincerely,

Linda Glas, P.E.

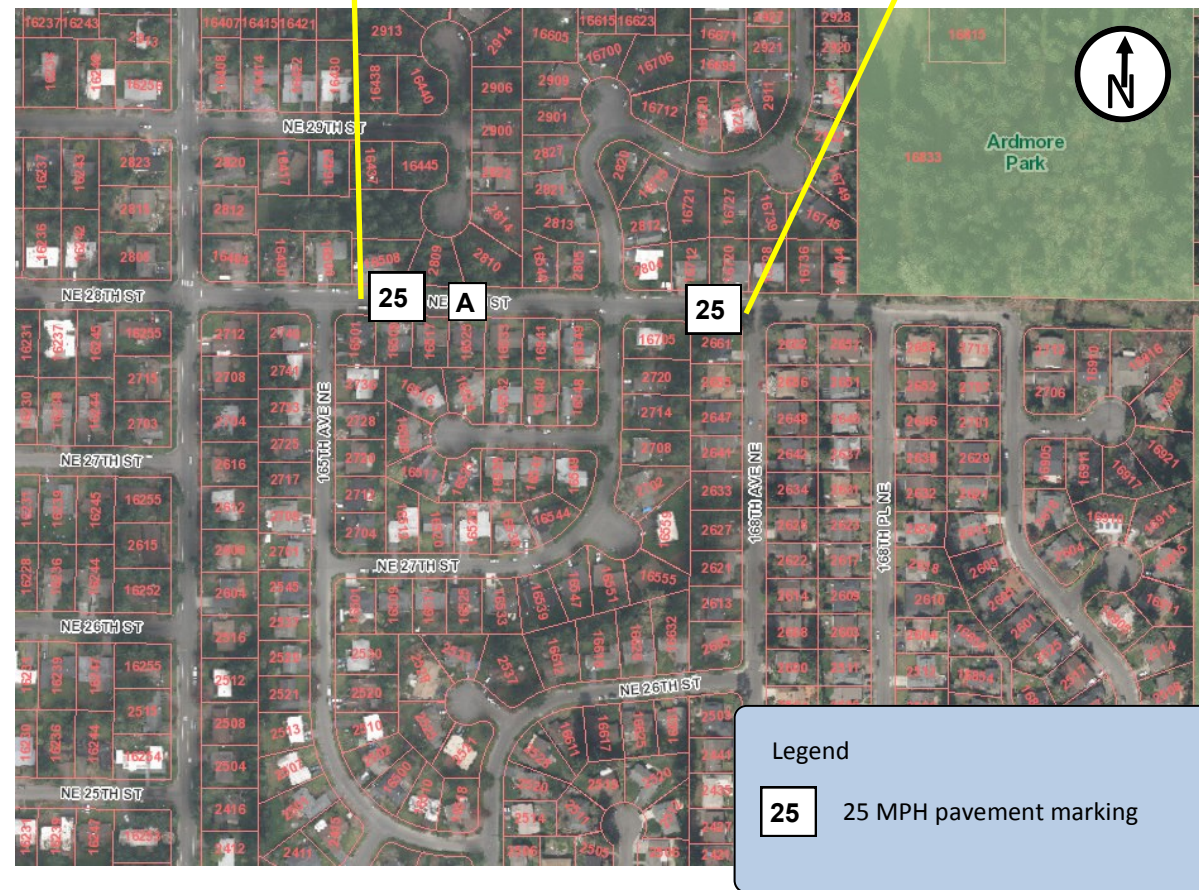




NE 28th St facing east



NE 28th St facing west



Summary of Findings

Date	Location	Mid-Week Average Daily Traffic^	Average Speeds		85th% Speeds*	
			Eastbound	Westbound	Eastbound	Westbound
6/3-6/9	A NE 28th St	654	25	25	30	29

^Mid-Week Average includes data between Tuesday and Thursday

*85% of vehicles traveling at or below this speed

Customized Traffic Action Plan for NE 28th St near 165th Ave NE

Education, Encouragement, and Enforcement

By educating the community and encouraging safe driving, we can begin to change driver behavior and reduce vehicle speeds.

- Educate the Community
- Enhance Neighborhood Identity
- Reduce Excessive Vehicle Speeds

Neighborhood Speed Watch



Using a borrowed radar unit, you record information about vehicles you observe traveling at or above 30 mph. NTSS staff then locate the registered owners of the vehicles and send a letter to them asking for their cooperation in reducing their speed. A partner to assist you with the data collection is recommended.

Radar Dolly



You can borrow and place a radar dolly on your street for up to two weeks. This unit gives motorists feedback on the speed at which they are driving, encouraging them to obey the speed limit. Should you like to borrow the radar dolly, please request it by calling (425) 452-6457 or sign up on www.bellevuewa.gov/radardolly.htm.

Sign and Pledge Program



This program involves lending communities portable signs that encourage motorists to respect the neighborhood, drive responsibly, and drive 25 mph. The signs are moved by community volunteers from place to place throughout the neighborhood every few days. The second part of the program is a neighborhood pace car program. Residents who pledge to drive responsibly and drive the speed limit on all neighborhood streets receive magnetic bumper stickers or window clings to place on their vehicles. As these motorists drive 25 mph on residential streets, they set the pace for drivers behind them.

