

Feeling inspired to take action to address the traffic concerns on SE 43rd St?

Here is a TO-DO Checklist to help you get started:

☐ Talk to neighbors and share the City's findings and recommendations

☐ List interested neighbors who want to help with efforts:

Name	House #	E-mail

☐ Choose which educational programs to participate in:

- ☐ Neighborhood Speed Watch
- ☐ Radar Dolly (www.bellevuewa.gov/radardolly.htm)
- ☐ Sign and Pledge Program

☐ Contact City staff to set-up a training session and/or to receive materials

- E-mail: BellevueNTSS@bellevuewa.gov
- Phone: (425) 452-6457

More info

Find out more about these recommendations in our **Residential Traffic Guidebook** or by logging on to **Streets are for Everyone (SAFE)** - Neighborhood Traffic Safety Services' blog.

Blog: <http://bellevuentss.wordpress.com>

Guidebook: http://www.bellevuewa.gov/pdf/Transportation/Guidebook_Web.pdf

Interprète
翻譯員
مترجم
통역사
Thông Dịch Viên
425-452-6800
Available in Other Languages



Interpreter

通訳
ವ್ಯಾಖ್ಯಾತ
इन्टरप्रेटर
Intérprete
Переводчик

The City of Bellevue assures that no person shall on the grounds of race, color, national origin or sex, as provided by Title VI of the Civil Rights Act of 1964 and related statutes, be excluded from participation in, be denied the benefits of, or be otherwise subjected to discrimination under any City of Bellevue program or activity.

For more information, please contact Service First at 425-452-6800.



Neighborhood Traffic Safety Services
www.bellevuewa.gov/traffic_services.htm
425-452-6457



TRAFFIC ACTION PLAN



BELLEVUE
NEIGHBORHOOD
TRAFFIC
SAFETY
SERVICES

2016-016 SE 43rd St east of 159th Ave SE

Thank you for contacting Neighborhood Traffic Safety Services and letting us know your concerns with vehicle speeds on SE 43rd St between 159th Ave SE and 161st Ave SE. To address your concerns, we have completed a field review and data analysis and compiled this information into the enclosed Traffic Action Plan (TAP).

Speed studies were conducted on SE 43rd Street, east of 159th Ave SE near your home. These studies show average speeds of 22.9 mph, with 85% of motorists traveling at or below 28.7 mph in the eastbound direction and at or below 27.6 mph in the westbound direction. The posted speed limit is 25 mph. In looking at the past ten years, there was one reported collision in 2015 where a driver collided with two parked vehicles on a Saturday morning. The report states that the cause of the collision was the driver's windshield view being obstructed by a fogged up window.

Physical measures that help address speeding concerns, such as speed humps, are limited to streets where the majority of motorists are exceeding the posted speed limit by 10 mph. These guidelines were established based on the impact these measures have on emergency response. At this time, SE 43rd Street does not qualify for physical measures.

We recommend that you and your neighbors participate in one of our education programs as described on page 3 of this report. One of the options that could work well for the situation you've described is to borrow a radar dolly. The radar dolly displays a vehicle's speed on a reader board. The radar dolly has been effective in decreasing vehicle speeds in many areas of Bellevue by encouraging motorists to reduce their speed. Once we receive a radar dolly request form from you, City staff will contact you to make arrangements for both the drop-off and pick-up of the radar dolly at your home.

Again, thank you for sharing your concerns with us. We look forward to working with you and your neighbors on the education programs suggested to address your traffic concerns. Please feel free to contact me at vgarcia@bellevuewa.gov or 425-452-6103 if you have any questions about this Traffic Action Plan.

Sincerely,

Vangie P. Garcia, P.E., PMP



Neighborhood Traffic Safety Services /// Transportation Department /// City of Bellevue

425-452-6457 www.bellevuewa.gov/traffic_services.htm

<http://bellevuentss.wordpress.com>

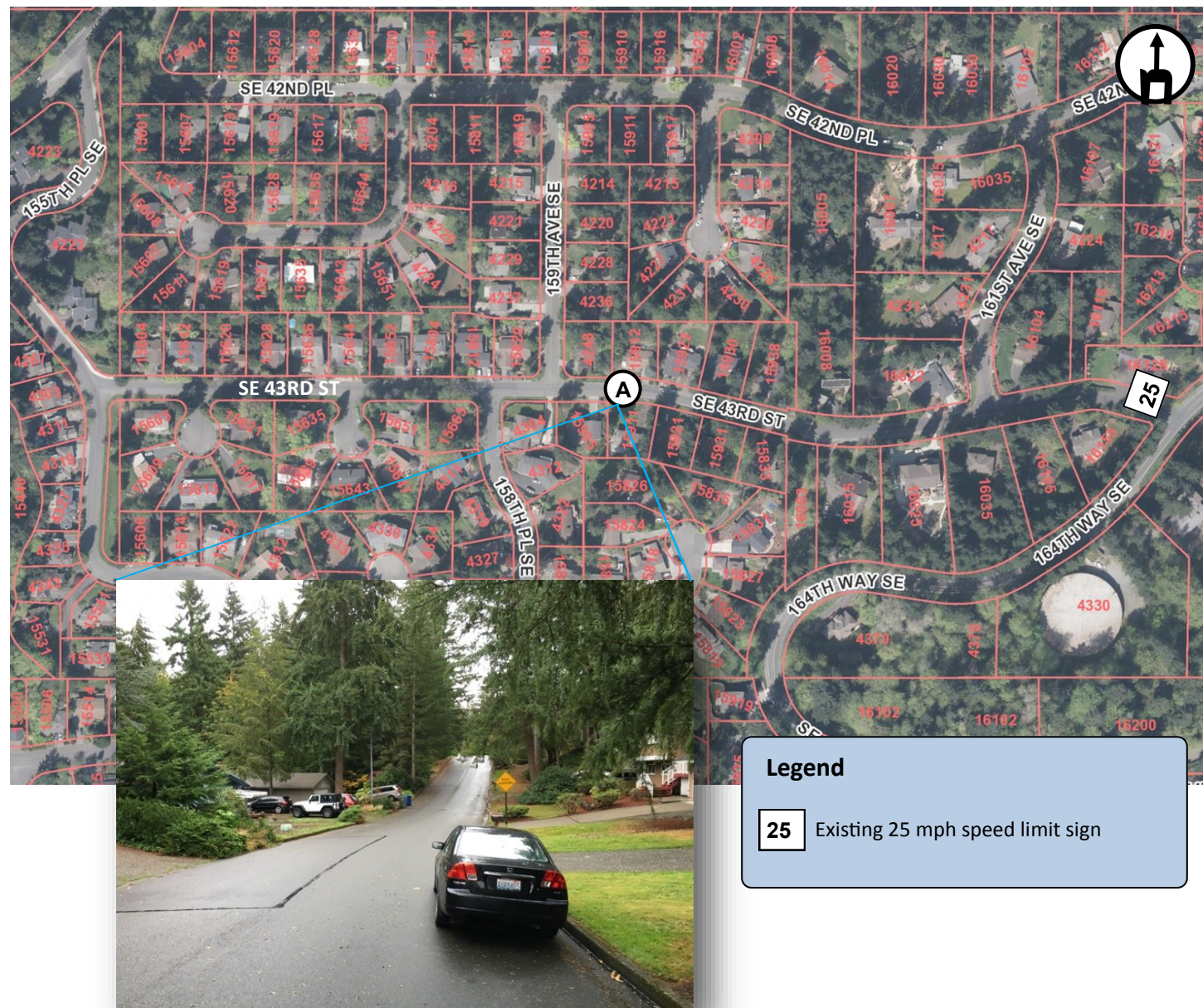


Summary of Findings

Position	Location	Year of Study	Mid-week Average Daily Traffic	Average Speed		85% Speeds*	
				Eastbound	Westbound	Eastbound	Westbound
A	SE 43rd St east of 159th Ave SE	2016	291	23.4	28.7	22.3	27.6

*85% of vehicles traveling at or below this speed

Mid-Week Average Daily Traffic consists of Tuesday, Wednesday, and Thursday



Customized Traffic Action Plan for SE 43rd St east of 159th Ave SE

Education, Encouragement, and Enforcement

By educating the community and encouraging safe driving, we can begin to change driver behavior and reduce vehicle speeds.

- Educate the Community
- Enhance Neighborhood Identity
- Reduce Excessive Vehicle Speeds

Neighborhood Speed Watch



Using a borrowed radar unit, you record information about vehicles you observe traveling at or above 30 mph. NTSS staff then locate the registered owners of the vehicles and send a letter to them asking for their cooperation in reducing their speed. A partner to assist you with the data collection is recommended.

Radar Dolly



You can borrow and place a radar dolly on your street for up to two weeks. This unit gives motorists feedback on the speed at which they are driving, encouraging them to obey the speed limit. Should you like to borrow the radar dolly, please request it by calling (425) 452-6457 or sign up on www.bellevuewa.gov/radardolly.htm.

Sign and Pledge Program



This program involves lending communities portable signs that encourage motorists to respect the neighborhood, drive responsibly, and drive 25 mph. The signs are moved by community volunteers from place to place throughout the neighborhood every few days. The second part of the program is a neighborhood pace car program. Residents who pledge to drive responsibly and drive the speed limit on all neighborhood streets receive magnetic bumper stickers or window clings to place on their vehicles. As these motorists drive 25 mph on residential streets, they set the pace for drivers behind them.

