

My Action Plan for NE 7th St east of 126th Ave NE

Are you feeling inspired to take action to address the traffic concerns on NE 7th St east of 126th Ave NE? Here is a checklist to help you get started:

- ☐ Talk to my neighbors and share the City's findings and recommendations
- ☐ List interested neighbors who want to help me with efforts:
- ☐ Decide the educational programs we want to participate in:
 - ☐ Neighborhood Speed Watch
 - ☐ Radar Dolly
 - ☐ Sign and Pledge Program
- ☐ Contact City staff to set-up a training session and get materials

Notes:

More info

Find out more about these recommendations in our **Residential Traffic Guidebook** or by logging on to **Streets are for Everyone (SAFE)**—Neighborhood Traffic Safety Services' blog.

Blog: <http://bellevuentss.wordpress.com>

Guidebook: http://www.bellevuewa.gov/pdf/Transportation/Guidebook_Web.pdf



TRAFFIC ACTION PLAN



**BELLEVUE
NEIGHBORHOOD
TRAFFIC
SAFETY
SERVICES**

2016-015 NE 7th St east of 126th Ave NE

Subject: Speeding and Cut-Through Concerns on NE 7th St east of 126th Ave NE

Thank you for contacting Neighborhood Traffic Safety Services and letting us know your concerns with vehicle speeds and cut-through traffic on NE 7th St east of 126th Ave NE. We've received several other complaints from your neighbors as well. To address your concerns, we have completed a field review and data analysis and compiled this information into the enclosed Traffic Action Plan (TAP), as well as our recommendations.

Speed studies were conducted on NE 7th St near your home. The speed studies were conducted January 7-13, 2016. These studies show average speeds of 22 mph, with 85% of motorists traveling at or below 26 mph in the eastbound direction and at or below 27 mph in the westbound direction. The posted speed limit is 25 mph. A ten-year collision study was also conducted along NE 7th St between 126th Ave NE and 128th Ave NE, and there were no reported crashes.

Physical measures such as speed humps are limited to streets where the majority of motorists are exceeding the posted speed limit by 10 mph. These guidelines were established based on the impact these measures have on emergency response. At this time, NE 7th St does not qualify for physical measures.

To address those motorists choosing to drive faster than the posted speed limit, we will install a "25 MPH" pavement marking on NE 7th St east of 126th Ave NE to encourage motorists to drive appropriately while traveling on this neighborhood street. We also encourage you and your neighbors to participate in one of our education programs as described on page 3 of this report. One of the options that would work well for the situation you've described is to borrow a radar dolly. The radar dolly displays a vehicle's speed on a reader board. The radar dolly has been effective in decreasing vehicle speeds in many areas of Bellevue by encouraging motorists to reduce their speed. I encourage you to fill out the radar dolly request form. Once we receive this form from you, City staff will contact you to make arrangements for both the drop-off and pick-up of the radar dolly at your home.

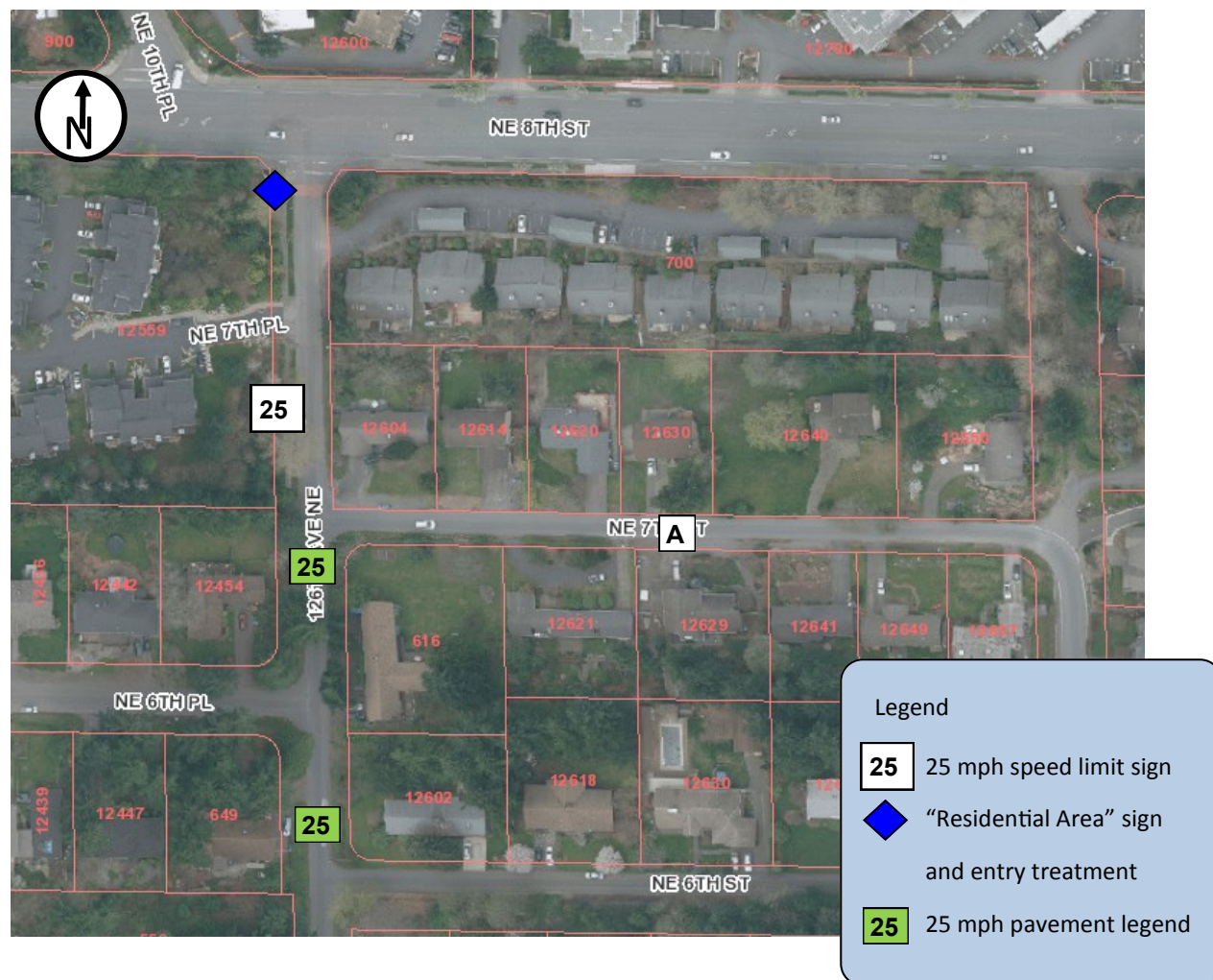
Another concern noted by you and your neighbors is cut-through traffic, in particular the afternoon peak hours when commuters use the streets in Wilburton to bypass the adjacent congested arterials. Volume counts taken in 1992 prior to our work in the community showed volumes of approximately 780 vehicles per day on NE 7th St. After implementation of our traffic calming measures on 128th Avenue, that decreased to 450 vehicles per day in 1995. Twenty years later, we have seen a slight increase in traffic with current volumes at 587 vehicles per day. This increase is still less than 1992 and may be associated with International School traffic (which is considered local, not cut-through) and some commuter traffic. The best way to address cut-through traffic is by restricting the movement of vehicles on a street such as turn restrictions at access points and partial closures. These types of restrictions have their trade-offs which include requiring residents to also follow the restrictions. This may place them and their guests in traffic queues on the main roadways to access their homes. This modification would need support from the majority of residents in the area. At this time, we have limited resources to address cut-through traffic but have added the Wilburton Neighborhood to our project candidate list.



Again, thank you for sharing your concerns with us. We look forward to working with you and your neighbors on the education programs suggested to address your traffic concerns. Please feel free to contact me at lglas@bellevuewa.gov or 425-452-2841 to participate in any of the education programs described in this Traffic Action Plan.

Sincerely,

Linda Glas, P.E.



Summary of Findings

Date	Location	Mid-Week Average Daily Traffic^	Average Speeds		85th% Speeds*	
			Eastbound	Westbound	Eastbound	Westbound
1/7-1/13	A NE 7th St	587	22	22	26	27

^Mid-Week Average includes data between Tuesday and Thursday

*85% of vehicles traveling at or below this speed



Neighborhood Traffic Safety Services
www.bellevuewa.gov/traffic_services.htm
 425-452-6457



Customized Traffic Action Plan for NE 7th St east of 126th Ave NE

Education, Encouragement, and Enforcement

By educating the community and encouraging safe driving, we can begin to change driver behavior and reduce vehicle speeds.



Educate the Community



Enhance Neighborhood Identity



Reduce Excessive Vehicle Speeds

Neighborhood Speed Watch



Using a borrowed radar unit, you record information about vehicles you observe traveling at or above 30 mph. NTSS staff then locate the registered owners of the vehicles and send a letter to them asking for their cooperation in reducing their speed. A partner to assist you with the data collection is recommended.

Radar Dolly



You can borrow and place a radar dolly on your street for up to two weeks. This unit gives motorists feedback on the speed at which they are driving, encouraging them to obey the speed limit. Should you like to borrow the radar dolly, please request it by calling (425) 452-6457 or sign up on www.bellevuewa.gov/radardolly.htm.

Sign and Pledge Program



This program involves lending communities portable signs that encourage motorists to respect the neighborhood, drive responsibly, and drive 25 mph. The signs are moved by community volunteers from place to place throughout the neighborhood every few days. The second part of the program is a neighborhood pace car program. Residents who pledge to drive responsibly and drive the speed limit on all neighborhood streets receive magnetic bumper stickers or window clings to place on their vehicles. As these motorists drive 25 mph on residential streets, they set the pace for drivers behind them.



Neighborhood Traffic Safety Services
www.bellevuewa.gov/traffic_services.htm
 425-452-6457

