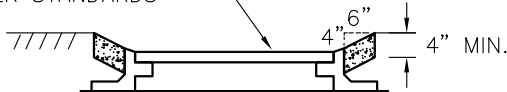


PROVIDE CONCRETE FUNNEL TO CONTAIN WATER FROM PRESSURE RELIEF DISCHARGE.

PARKING LOT/ AREA  
GRATE AND FRAME  
PER STANDARDS



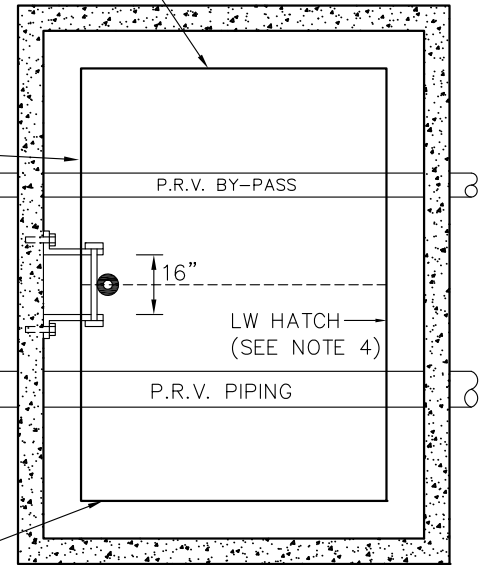
CONCRETE INLET  
PER STANDARDS

PRESSURE RELIEF DRAIN

VAULTS WITH LW HATCH ACCESS SHALL NOT BE INSTALLED IN AREAS WITH VEHICULAR TRAFFIC. INSTALL IN SHOULDERS, SIDEWALKS OR LANDSCAPED AREAS ONLY. TO READ **WATER**

8" DIA DRAIN  
TO DAYLIGHT OR  
STORM SYSTEM.

HINGE



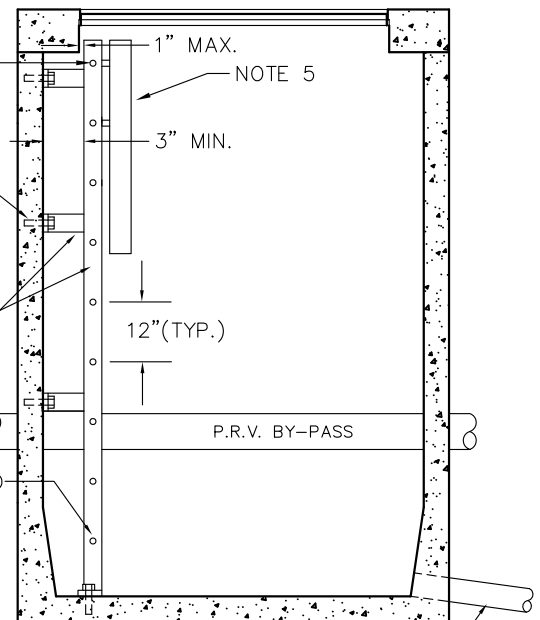
PLAN VIEW

FIRST STEP MINIMUM  
8" BELOW TOP OF  
COVER, MAXIMUM 12".

CONCRETE MECHANICAL  
ANCHOR BOLT, GALVANIZED  
OR STAINLESS STEEL  
(TYPICAL)

SIDE RAIL AND  
BRACKET, 1 1/2" x  
1/4" GALV. STEEL  
(TYPICAL)

RUNG, NO. 8 DEFORMED  
REINFORCING BAR  
CONFORMING TO  
ASTM A 615



6" DIA DRAIN TO DAYLIGHT  
OR STORM SYSTEM (WIRE  
MESH RODENT SCREEN  
OVER DRAIN).

ELEVATION VIEW

NOTES:

1. LADDER TO BE SECURED TO VAULT WALL AT 3 LOCATIONS, ONE AT THE TOP, MIDDLE AND BOTTOM.
2. ALL LADDER PARTS TO BE GALVANIZED CONFORMING TO ASTM A 123
3. LOCATE PRESSURE RELIEF DRAIN OUTSIDE PEDESTRIAN AND TRAFFIC AREAS.
4. ACCESS HATCH SHALL BE LOCKING ALUMINUM LW PRODUCTS HHD 48"x60" DOUBLE DOOR MODEL RATED FOR H-30 LOADING WITH SLIP RESISTANT TREATMENT PER SECTION W4-17 OF THE ENGINEERING STANDARDS. HATCHES SHALL INCLUDE RECESSED PADLOCK HASP SIZED TO ACCEPT CITY OF BELLEVUE WATER DIVISION PADLOCKS (CONTACT LW PRODUCTS).
5. LADDER-UP ATTACHMENT REQUIRED ON ALL VAULT LADDERS. BILCO MODEL LU-2, OR EQUAL.
6. MANHOLE LID IS OPTIONAL ONLY WHEN STATION COVER IS LOCATED IN TRAFFIC.
7. DRAIN HATCH GUTTER DRAIN TO EXISTING CB OR DAYLIGHT.



City of  
Bellevue

WATER UTILITY

TITLE

PRESSURE REDUCING STATION  
ACCESS LADDER  
AND PRESSURE RELIEF DRAIN

NO. **W-19**