

## My Action Plan for 150th Ave SE between 22nd and 20th

Are you feeling inspired to take action to address the traffic concerns on 150th Ave SE between SE 22nd St and SE 20th St? Here is a checklist to help you get started:

- ☐ Talk to my neighbors and share the City's findings and recommendations
- ☐ List interested neighbors who want to help me with efforts:

---



---



---

- ☐ Decide the educational programs we want to participate in:
  - ☐ Neighborhood Speed Watch
  - ☐ Radar Dolly
  - ☐ Sign and Pledge Program
- ☐ Contact City staff to set-up a training session and get materials

Notes:

---



---



---



---



---



---



---



---

### More info

Find out more about these recommendations in our **Residential Traffic Guidebook** or by logging on to **Streets are for Everyone (SAFE)**—Neighborhood Traffic Safety Services' blog.

Blog: <http://bellevuentss.wordpress.com>

Guidebook: [http://www.bellevuewa.gov/pdf/Transportation/Guidebook\\_Web.pdf](http://www.bellevuewa.gov/pdf/Transportation/Guidebook_Web.pdf)

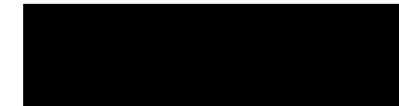


## TRAFFIC ACTION PLAN



BELLEVUE  
NEIGHBORHOOD  
TRAFFIC  
SAFETY  
SERVICES

## 2015-030 150th Ave SE between 22nd and 20th



May 2, 2016

Bellevue, WA 98007

Subject: Speeding Concerns on 150th Ave SE between SE 22nd St and SE 20th St

Dear 

Thank you for contacting Neighborhood Traffic Safety Services and letting us know your concerns with vehicle speeds on 150th Ave SE between SE 22nd St and SE 20th St. We have completed a field review and data analysis and compiled this information into the enclosed Traffic Action Plan (TAP), as well as our recommendations.

Speed studies were conducted on 150th Ave SE near your home. The speed studies were conducted April 12-18, 2016. These studies show average speeds of 22 mph, with 85% of motorists traveling at or below 26 mph in both the northbound and southbound direction. The posted speed limit is 25 mph. A five-year collision study was also conducted along 150th Ave SE between SE 22nd St and SE 20th St, and there were no reported crashes.

You requested the installation of an additional speed hump to slow down speeding motorists. As you recall, a large traffic calming project was constructed in the Robinswood Neighborhood in 2005. Three streets (150th Ave SE, 151st Ave SE, and 154th Ave SE) each received two speed humps and two entry treatments with "Residential Area" signs between SE 22nd St and SE 16th St. A raised crosswalk was also installed on 150th Ave SE at SE 20th St (with 15 mph advisory speed signs), and a traffic circle was installed at 152nd Ave SE/SE 18th St. At this time, we will not pursue the installation of additional speed humps or lowering the speed limit but instead focus on education programs.

Big Picture School has also been involved in our education program. Our Police Department placed a radar trailer adjacent to their site on 150th Ave SE February 1-5, 2016. The data collected indicated that 5% of southbound motorists were exceeding the 25 mph speed limit. Should you wish to have this radar trailer placed here again in the future, please contact Big Picture School and they will coordinate with us.

You mentioned that you are willing to participate in the Neighborhood Speed Watch as well as borrow a radar dolly. The radar dolly displays a vehicle's speed on a reader board. The radar dolly has been effective in decreasing vehicle speeds in many areas of Bellevue by encouraging motorists to reduce their speed. I encourage you to fill out the radar dolly request form. Once we receive this form from you, City staff will contact you to make arrangements for both the drop-off and pick-up of the radar dolly at your home.





Again, thank you for sharing your concerns with us. We look forward to working with you and your neighbors on the education programs suggested to address your traffic concerns. Please feel free to contact me at [lglas@bellevuewa.gov](mailto:lglas@bellevuewa.gov) or 425-452-2841 to participate in any of the education programs described in this Traffic Action Plan.

Sincerely,

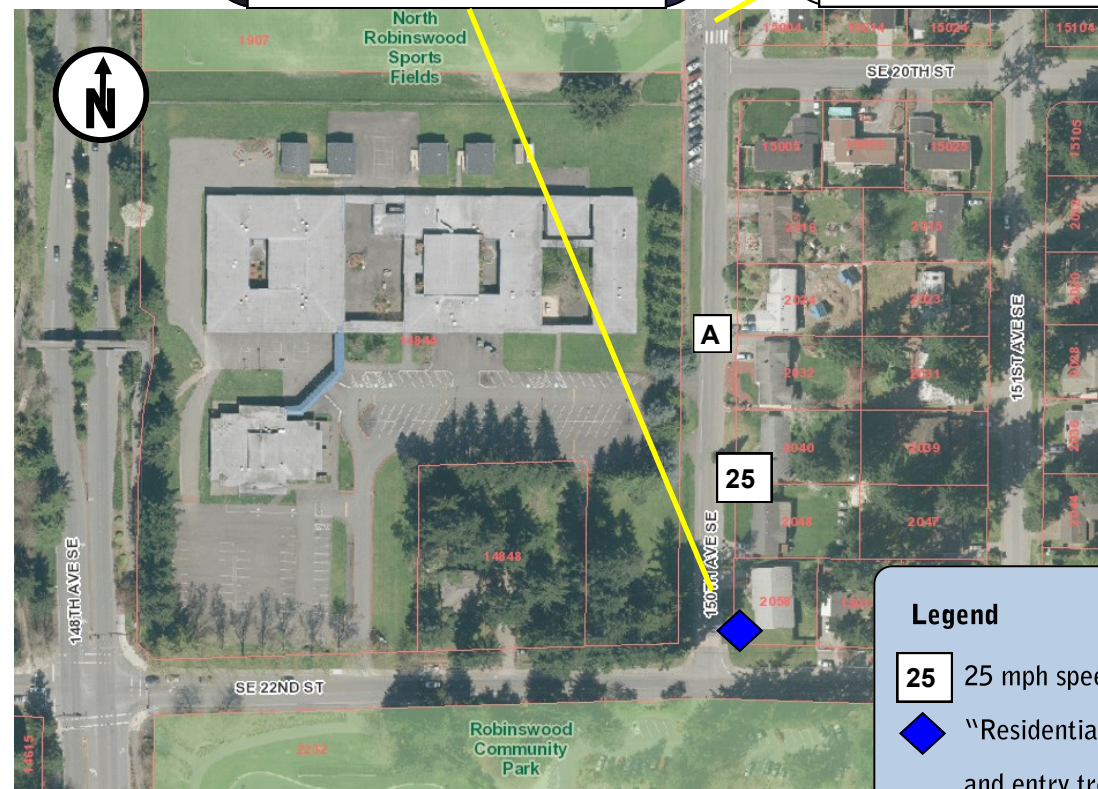
Linda Glas, P.E.



150th Ave SE facing north



150th Ave SE facing south



Legend

- 25 25 mph speed limit sign
- ◆ "Residential Area" sign and entry treatment

## Summary of Findings

Date	Location	Mid-Week Average Daily Traffic^	Average Speeds		85th% Speeds*	
			Northbound	Southbound	Northbound	Southbound
4/12-4/18	<span style="border: 1px solid black; padding: 2px;">A</span> 150th Ave SE	599	22	22	26	26

^Mid-Week Average includes data between Tuesday and Thursday \*85% of vehicles traveling at or below this speed

## Customized Traffic Action Plan for 150th Ave SE between 22nd and

### Education, Encouragement, and Enforcement

By educating the community and encouraging safe driving, we can begin to change driver behavior and reduce vehicle speeds.

- Educate the Community**
- Enhance Neighborhood Identity**
- Reduce Excessive Vehicle Speeds**

### Neighborhood Speed Watch



Using a borrowed radar unit, you record information about vehicles you observe traveling at or above 30 mph. NTSS staff then locate the registered owners of the vehicles and send a letter to them asking for their cooperation in reducing their speed. A partner to assist you with the data collection is recommended.

### Radar Dolly



You can borrow and place a radar dolly on your street for up to two weeks. This unit gives motorists feedback on the speed at which they are driving, encouraging them to obey the speed limit. Should you like to borrow the radar dolly, please request it by calling (425) 452-6457 or sign up on [www.bellevuewa.gov/radardolly.htm](http://www.bellevuewa.gov/radardolly.htm).

### Sign and Pledge Program



This program involves lending communities portable signs that encourage motorists to respect the neighborhood, drive responsibly, and drive 25 mph. The signs are moved by community volunteers from place to place throughout the neighborhood every few days. The second part of the program is a neighborhood pace car program. Residents who pledge to drive responsibly and drive the speed limit on all neighborhood streets receive magnetic bumper stickers or window clings to place on their vehicles. As these motorists drive 25 mph on residential streets, they set the pace for drivers behind them.

