

## My Action Plan for 123rd Ave SE and SE 15th St

Are you feeling inspired to take action to address the traffic concerns on 123rd Ave SE near SE 15th St? Here is a checklist to help you get started:

- ☐ Talk to my neighbors and share the City's findings and recommendations
- ☐ List interested neighbors who want to help me with efforts:

---



---



---

- ☐ Decide the educational programs we want to participate in:
  - ☐ Neighborhood Speed Watch
  - ☐ Radar Dolly
  - ☐ Sign and Pledge Program
- ☐ Contact City staff to set-up a training session and get materials

Notes:

---



---



---



---



---



---



---



---

### More info

Find out more about these recommendations in our **Residential Traffic Guidebook** or by logging on to **Streets are for Everyone (SAFE)**—Neighborhood Traffic Safety Services' blog.

**Blog:** <http://bellevuentss.wordpress.com>

**Guidebook:** [http://www.bellevuewa.gov/pdf/Transportation/Guidebook\\_Web.pdf](http://www.bellevuewa.gov/pdf/Transportation/Guidebook_Web.pdf)

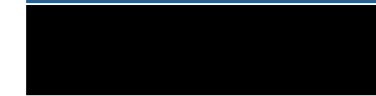


## TRAFFIC ACTION PLAN



BELLEVUE  
NEIGHBORHOOD  
TRAFFIC  
SAFETY  
SERVICES

## 2015-029 123rd Ave SE near SE 15th St



February 24, 2016

Bellevue, WA 98005

Subject: Speeding Concerns on 123rd Ave near SE 15th St

Dear 

Thank you for contacting Neighborhood Traffic Safety Services and letting us know your concerns with vehicle speeds on 123rd Ave SE. We have completed a field review and data analysis and compiled this information into the enclosed Traffic Action Plan (TAP), as well as our recommendations.

Speed studies were conducted on 123rd Ave SE near your home after the completion of the recent pavement overlay on 123rd Ave SE/128th Ave SE. The speed studies were conducted December 2-8, 2015. These studies show 85% of motorists are traveling at or below 30 mph in both directions. A three-year accident study was also conducted along 123rd Ave SE between SE 10th St and SE 20th Pl and there was one reported collision; excessive speed does not appear to be the determining factor in the cause of the collision.

During our meeting on your street, you requested a stationary radar sign be installed for northbound traffic as they begin their descent down 123rd Ave SE. Stationary radar signs are one of the many speed reduction techniques installed on streets in Bellevue. These driver feedback signs use an internal radar unit that captures the speed of passing motorists and displays this speed onto a display board. Radar signs target excessive vehicle speeds by encouraging passing motorists to reduce their speed, if necessary. Each year, all radar sign requests are prioritized with the two receiving the highest score receiving funding. You can request a radar sign here: <https://www.bellevuewa.gov/radarsign.htm>.

The traffic committee—consisting of neighborhood volunteers—for the 123rd Ave SE south of SE 20th Pl traffic improvement project voiced a lack of desire for more vertical traffic calming elements (e.g. speed humps or other devices that requires drivers to travel *over* something ) in the neighborhood. Given this perspective, the steepness of the roadway on 123rd Ave SE, and that speeds do not warrant physical measures, no additional traffic calming are planned for your neighborhood at this time.

To address those motorists choosing to drive faster than the posted speed limit, we encourage you and your neighbors to participate in one of our education programs as described on page 3 of this report. One of the options that would work well for the situation you've described is to borrow a radar dolly—as your neighbor to the north has recently done. The radar dolly displays a vehicle's speed on a reader board. The radar dolly has been effective in decreasing vehicle speeds in many areas of Bellevue by encouraging motorists to reduce their speed. I encourage you to fill out the radar dolly request form ([www.bellevuewa.gov/radardolly.htm](http://www.bellevuewa.gov/radardolly.htm)).

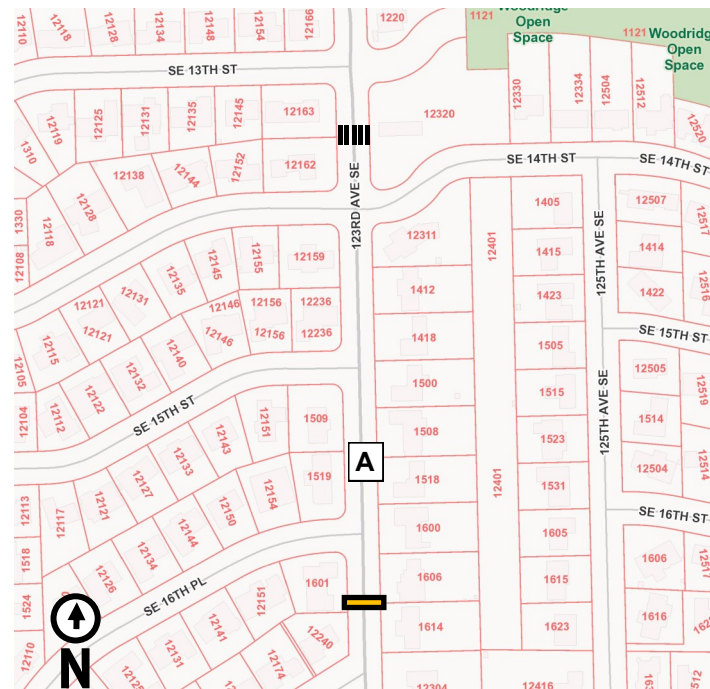


Once we receive this form from you, City staff will contact you to make arrangements for both the drop-off and pick-up of the radar dolly at your home.

Again, thank you for sharing your concerns with us. We look forward to working with you and your neighbors on the education programs suggested to address your traffic concerns. Please feel free to contact me at [jmurphy@bellevuewa.gov](mailto:jmurphy@bellevuewa.gov) or 425-452-6967 to participate in any of the education programs described in this Traffic Action Plan.

Sincerely,

John Murphy  
Associate Planner



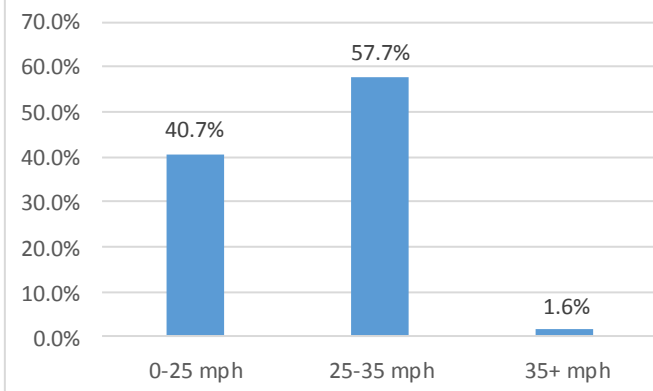
**Legend:**  
 Speed hump  
 Marked crosswalk  
 Posted speed limit is 25 mph

## Summary of Speed/Volume Study

Date	Location	Mid-Week Average Daily Traffic^	Average Speeds		85th Speeds*	
			Northbound	Southbound	Northbound	Southbound
12/2-12/8	A 123rd Ave SE	3,525	26	26	30	30

^Mid-Week Average includes data between Tuesday and Thursday \*85% of vehicles traveling at or below this speed

Percent of Vehicles Traveling at Various Speed Ranges between 12/2/15-12/8/15



The 7-day speed and volume study revealed that only 1.6% of drivers were traveling 10+ miles per hour over the speed limit. 98.4% of drivers were traveling below the speed at which a street generally qualifies for physical traffic calming elements (35+ mph)

## Customized Traffic Action Plan for 123rd Ave SE near SE 15th St

### Education, Encouragement, and Enforcement

By educating the community and encouraging safe driving, we can begin to change driver behavior and reduce vehicle speeds.

- Educate the Community**
- Enhance Neighborhood Identity**
- Reduce Excessive Vehicle Speeds**

### Neighborhood Speed Watch

Using a borrowed radar unit, you record information about vehicles you observe traveling at or above 30 mph. NTSS staff then locate the registered owners of the vehicles and send a letter to them asking for their cooperation in reducing their speed. A partner to assist you with the data collection is recommended.

### Radar Dolly

You can borrow and place a radar dolly on your street for up to two weeks. This unit gives motorists feedback on the speed at which they are driving, encouraging them to obey the speed limit. Should you like to borrow the radar dolly, please request it by calling (425) 452-6457 or sign up on [www.bellevuewa.gov/radardolly.htm](http://www.bellevuewa.gov/radardolly.htm).



### Sign and Pledge Program

This program involves lending communities portable signs that encourage motorists to respect the neighborhood, drive responsibly, and drive 25 mph. The signs are moved by community volunteers from place to place throughout the neighborhood every few days. The second part of the program is a neighborhood pace car program. Residents who pledge to drive responsibly and drive the speed limit on all neighborhood streets receive magnetic bumper stickers or window clings to place on their vehicles. As these motorists drive 25 mph on residential streets, they set the pace for drivers behind them.

### Stationary Radar Sign

The City has installed approximately 40 stationary radar signs. The majority of radar sign locations have experienced an overall reduction of vehicle speeds between 1 and 6 mph, even up to four years after the sign installations. The basic function of the stationary radar sign is to provide a dynamic speed display (increasing and decreasing) to the driver of a passing vehicle to encourage the motorist to reduce vehicle speeds if necessary.

### Police Enforcement

The Transportation Department works closely with the Bellevue Police Department to enforce speed limits and other traffic laws in neighborhoods. Typically, targeted enforcement occurs during a one-week timeframe and is available upon request by calling (425) 452-6940 or by submitting a Traffic Service Request at [www.bellevuewa.gov/traffic\\_service\\_request.htm](http://www.bellevuewa.gov/traffic_service_request.htm).