

## My Action Plan for SE 38th Pl off SE 38th St

Are you feeling inspired to take action to address the traffic concerns on SE 38th Pl off SE 38th St? Here is a checklist to help you get started:

- ☐ Talk to my neighbors and share the City's findings and recommendations
- ☐ List interested neighbors who want to help me with efforts:

---



---



---

- ☐ Decide the educational programs we want to participate in:
  - ☐ Neighborhood Speed Watch
  - ☐ Radar Dolly
  - ☐ Sign and Pledge Program
- ☐ Contact City staff to set-up a training session and get materials

Notes:

---



---



---



---



---



---



---



---

### More info

Find out more about these recommendations in our **Residential Traffic Guidebook** or by logging on to **Streets are for Everyone (SAFE)**—Neighborhood Traffic Safety Services' blog.

**Blog:** <http://bellevuentss.wordpress.com>

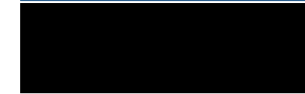
**Guidebook:** [http://www.bellevuewa.gov/pdf/Transportation/Guidebook\\_Web.pdf](http://www.bellevuewa.gov/pdf/Transportation/Guidebook_Web.pdf)



## TRAFFIC ACTION PLAN



## 2015-021 SE 38th Pl off SE 38th St



December 7, 2015

Bellevue, WA 98008

Subject: Speeding Concerns on SE 38th Pl off SE 38th St

Dear 

Thank you for contacting Neighborhood Traffic Safety Services and letting us know your concerns with vehicle speeds on SE 38th Pl off SE 38th St. We have completed a field review and data analysis and compiled this information into the enclosed Traffic Action Plan (TAP), as well as our recommendations.

Speed studies were conducted on SE 38th Pl near your home. The speed studies were conducted September 9-15, 2015. These studies show 85% of motorists are traveling at or below 17 mph in the eastbound direction and at or below 20 mph in the westbound direction. There were 1,733 total vehicles (eastbound and westbound) recorded during our 7-day study, and only 7 of these vehicles (0.4%) were recorded travelling over 25 mph at this location. There were no vehicles recorded travelling over 30 mph at this location. An accident study was also conducted along this dead end street, and there were no reported accidents.

Our observations from our field review of SE 38th Pl are exactly as you described it — “narrow street which dead ends at the top of the street after winding and gaining some elevation.” Motorists tend to drive slower on narrow streets, as the results of our speed studies reflect. There is a “No Outlet” sign on SE 38th Pl just off SE 38th St as well as a “Narrow Road” sign and a “15 mph” advisory speed sign. As our speed studies indicate, the majority of motorists are driving appropriately on SE 38th Pl with recorded average speeds of 14 mph in the eastbound direction and 15 mph in the westbound direction.

The use of physical measures such as speed humps are limited to streets where the majority of motorists are exceeding the posted speed limit by 10 mph. These guidelines were established based on the impact these measures have on emergency response. Based on the results of our speed studies, SE 38th Pl does not qualify for physical measures.

The majority of motorists driving on SE 38th Pl are the residents themselves. We encourage you and your neighbors to participate in one of our education programs as described on page 3 of this report. One of the options that would work well to address your speeding concerns is to borrow a radar dolly. The radar dolly displays a vehicle's speed on a reader board. The radar dolly has been effective in decreasing vehicle speeds in many areas of Bellevue by encouraging motorists to reduce their speed. I encourage you to fill out the radar dolly request form. Once we receive this form from you, City staff will contact you to make arrangements for both the drop-off and pick-up of the radar dolly at your home.

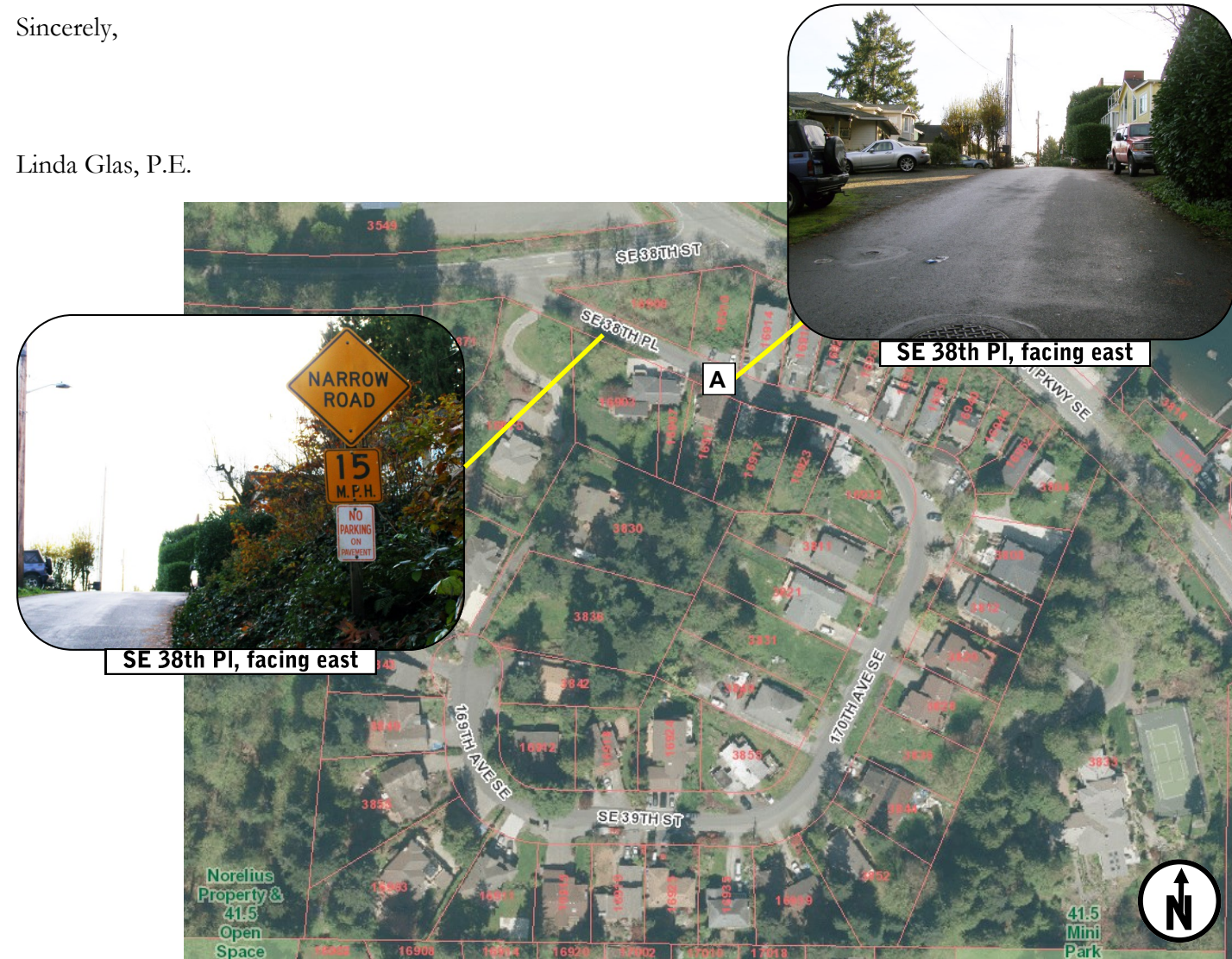




Again, thank you for sharing your concerns with us. We look forward to working with you and your neighbors on the education programs suggested to address your traffic concerns. Please feel free to contact me at [lglas@bellevuewa.gov](mailto:lglas@bellevuewa.gov) or 425-452-2841 to participate in any of the education programs described in this Traffic Action Plan.

Sincerely,

Linda Glas, P.E.



## Summary of Findings

Date	Location	Mid-Week Average Daily Traffic^	Average Speeds		85th% Speeds*	
			Eastbound	Westbound	Eastbound	Westbound
9/9-9/15	<b>A</b> SE 38th Pl	260	14	15	17	20

^Mid-Week Average includes data between Tuesday and Thursday

\*85% of vehicles traveling at or below this speed



Neighborhood Traffic Safety Services  
[www.bellevuewa.gov/traffic\\_services.htm](http://www.bellevuewa.gov/traffic_services.htm)  
 425-452-6457



## Customized Traffic Action Plan for SE 38th Pl off SE 38th St

### Education, Encouragement, and Enforcement

By educating the community and encouraging safe driving, we can begin to change driver behavior and reduce vehicle speeds.

- Educate the Community
- Enhance Neighborhood Identity
- Reduce Excessive Vehicle Speeds

### Neighborhood Speed Watch



Using a borrowed radar unit, you record information about vehicles you observe traveling at or above 30 mph. NTSS staff then locate the registered owners of the vehicles and send a letter to them asking for their cooperation in reducing their speed. A partner to assist you with the data collection is recommended.

### Radar Dolly



You can borrow and place a radar dolly on your street for up to two weeks. This unit gives motorists feedback on the speed at which they are driving, encouraging them to obey the speed limit. Should you like to borrow the radar dolly, please request it by calling (425) 452-6457 or sign up on [www.bellevuewa.gov/radardolly.htm](http://www.bellevuewa.gov/radardolly.htm).

### Sign and Pledge Program



This program involves lending communities portable signs that encourage motorists to respect the neighborhood, drive responsibly, and drive 25 mph. The signs are moved by community volunteers from place to place throughout the neighborhood every few days. The second part of the program is a neighborhood pace car program. Residents who pledge to drive responsibly and drive the speed limit on all neighborhood streets receive magnetic bumper stickers or window clings to place on their vehicles. As these motorists drive 25 mph on residential streets, they set the pace for drivers behind them.



Neighborhood Traffic Safety Services  
[www.bellevuewa.gov/traffic\\_services.htm](http://www.bellevuewa.gov/traffic_services.htm)  
 425-452-6457

