

My Action Plan for NE 25th St

Are you feeling inspired to take action to address the traffic concerns on NE 25th St? Here is a checklist to help you get started:

- ☐ Talk to my neighbors and share the City's findings and recommendations
- ☐ List interested neighbors who want to help me with efforts:

- ☐ Decide the educational programs we want to participate in:
 - ☐ Neighborhood Speed Watch
 - ☐ Radar Dolly
 - ☐ Sign and Pledge Program
- ☐ Contact City staff to set-up a training session and get materials

Notes:

More info

Find out more about these recommendations in our **Residential Traffic Guidebook** or by logging on to **Streets are for Everyone (SAFE)**—Neighborhood Traffic Safety Services' blog.

Blog: <http://bellevuentss.wordpress.com>

Guidebook: http://www.bellevuewa.gov/pdf/Transportation/Guidebook_Web.pdf

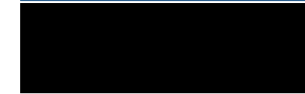


TRAFFIC ACTION PLAN



BELLEVUE
NEIGHBORHOOD
TRAFFIC
SAFETY
SERVICES

2015-010 NE 25th St



October 30, 2015

Bellevue, WA 98008

Subject: Speeding and Spillover Parking Concerns on NE 25th St

Dear 

Thank you for contacting Neighborhood Traffic Safety Services and letting us know your concerns with speeding and spillover parking on NE 25th St. We have completed a field review and data analysis and compiled this information into the enclosed Traffic Action Plan (TAP), as well as our recommendations.

Speed studies were conducted on NE 25th St near your home. The speed studies were conducted June 5-11, 2015. These studies show 85% of motorists are traveling at or below 24 mph in the eastbound direction and at or below 25 mph in the westbound direction. A five-year accident study was also conducted along NE 25th St between 162nd Ave NE and 164th Ave NE, and there were no reported accidents.

The use of physical measures such as speed humps are limited to streets where the majority of motorists are exceeding the posted speed limit by 10 mph. These guidelines were established based on the impact these measures have on emergency response. There were 883 total vehicles (eastbound and westbound) recorded during our 7-day study, and only 3 of these vehicles were recorded travelling over 35 mph at this location. At this time, NE 25th St does not qualify for physical measures.

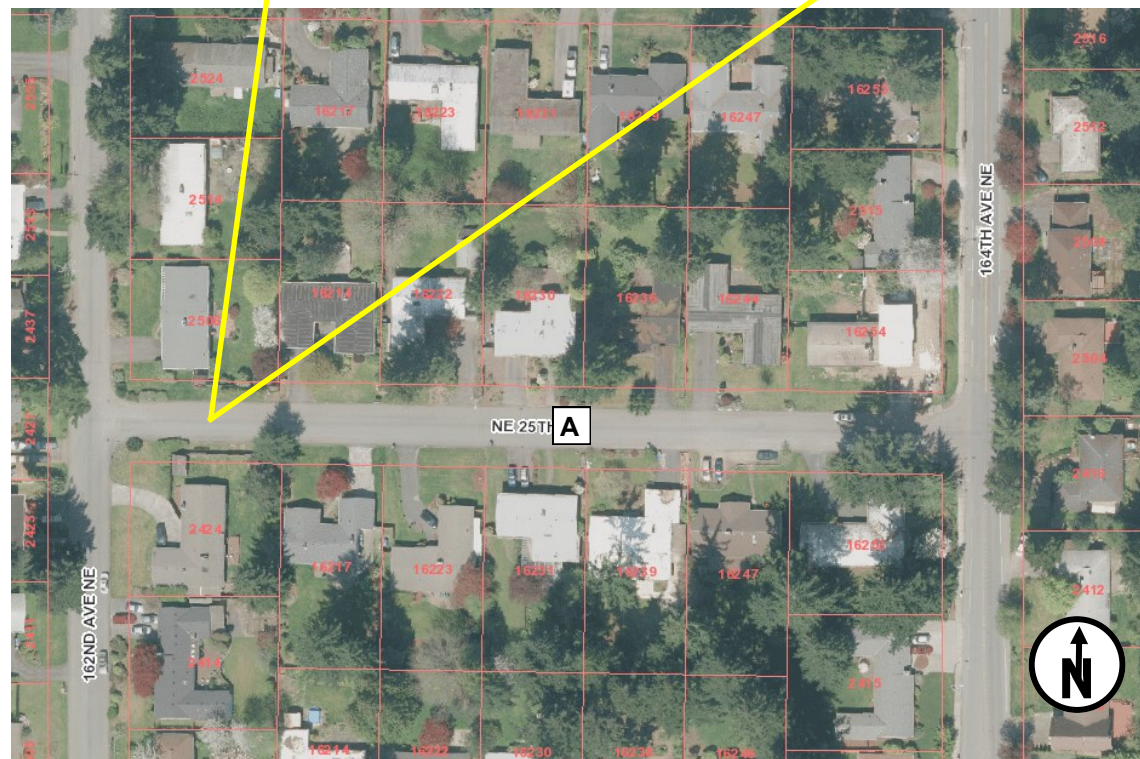
You requested an expansion of Residential Permit Parking Zone 2 on NE 25th St between 162nd Ave NE and 164th Ave NE to address spillover parking from Interlake High School students. Based on staff's observations, NE 25th St east of 162nd Ave NE meets our residential parking management program guidelines. We will prepare a ballot for a proposed expansion of Zone 2 parking restrictions on NE 25th St between 162nd Ave NE and 164th Ave NE to address spillover parking from Interlake High School students. The proposed parking restrictions would be the same as those implemented on 162nd Ave NE: "No Parking 7 AM to 4 PM Except Saturdays, Sundays, and Holidays Except by Zone 2 Permit." Should 65% of all households along this portion of NE 25th St support the parking restrictions, the proposal would then be taken to the Bellevue City Council for final approval.

To address those motorists choosing to drive faster than the posted speed limit, we encourage you and your neighbors to participate in one of our education programs as described on page 3 of this report. Please feel free to contact me at lglas@bellevuewa.gov or 425-452-2841 if you are interested in participating in any of these education programs described in this Traffic Action Plan.

Sincerely,

Linda Glas, P.E.





Summary of Findings

Date	Location	Mid-Week Average Daily Traffic^	Average Speeds		85th% Speeds*	
			Eastbound	Westbound	Eastbound	Westbound
6/5-6/11	A NE 25th St	156	20	20	24	25

^Mid-Week Average includes data between Tuesday and Thursday *85% of vehicles traveling at or below this speed

What Can You Do?

Education, Encouragement, and Enforcement

By educating the community and encouraging safe driving, we can begin to change driver behavior and reduce vehicle speeds.

- Educate the Community
- Enhance Neighborhood Identity
- Reduce Excessive Vehicle Speeds

Neighborhood Speed Watch

Using a borrowed radar unit, you record information about vehicles you observe traveling at or above 30 mph. NTSS staff then locate the registered owners of the vehicles and send a letter to them asking for their cooperation in reducing their speed. A partner to assist you with the data collection is recommended.

Radar Dolly

You can borrow and place a radar dolly on your street for up to two weeks. This unit gives motorists feedback on the speed at which they are driving, encouraging them to obey the speed limit. Should you like to borrow the radar dolly, please request it by calling (425) 452-6457 or sign up on www.bellevuewa.gov/radardolly.htm.

Sign and Pledge Program

This program involves lending communities portable signs that encourage motorists to respect the neighborhood, drive responsibly, and drive 25 mph. The signs are moved by community volunteers from place to place throughout the neighborhood every few days. The second part of the program is a neighborhood pace car program. Residents who pledge to drive responsibly and drive the speed limit on all neighborhood streets receive magnetic bumper stickers or window clings to place on their vehicles. As these motorists drive 25 mph on residential streets, they set the pace for drivers behind them.

