

## My Action Plan for SE 64th St between 116th and 120th

Are you feeling inspired to take action to address the traffic concerns on SE 64th St between 116th and 120th? Here is a checklist to help you get started:

- ☐ Talk to my neighbors and share the City's findings and recommendations
- ☐ List interested neighbors who want to help me with efforts:

\_\_\_\_\_

\_\_\_\_\_

\_\_\_\_\_

- ☐ Decide the educational programs we want to participate in:
  - ☐ Neighborhood Speed Watch
  - ☐ Radar Dolly
  - ☐ Sign and Pledge Program
- ☐ Contact City staff to set-up a training session and get materials

Notes:

\_\_\_\_\_

\_\_\_\_\_

\_\_\_\_\_

\_\_\_\_\_

\_\_\_\_\_

\_\_\_\_\_

\_\_\_\_\_

### More info

Find out more about these recommendations in our **Residential Traffic Guidebook** or by logging on to **Streets are for Everyone (SAFE)**—Neighborhood Traffic Safety Services' blog.

**Blog:** <http://bellevuentss.wordpress.com>

**Guidebook:** [http://www.bellevuewa.gov/pdf/Transportation/Guidebook\\_Web.pdf](http://www.bellevuewa.gov/pdf/Transportation/Guidebook_Web.pdf)



## TRAFFIC ACTION PLAN



**BELLEVUE  
NEIGHBORHOOD  
TRAFFIC  
SAFETY  
SERVICES**

## 2015-009 SE 64th St between 116th and 120th

July 28, 2015

Bellevue, WA 98006

Subject: Speeding Concerns on SE 64th St between 116th and 120th

Dear \_\_\_\_\_

Thank you for contacting Neighborhood Traffic Safety Services and letting us know your concerns with vehicle speeds on SE 64th St between 116th and 120th. We have completed a field review and data analysis and compiled this information into the enclosed Traffic Action Plan (TAP), as well as our recommendations.

Speed studies were conducted on SE 64th St east of 117th Ave SE. The speed studies were conducted May 27-June 2, 2015. These studies show 85% of motorists are traveling at or below 32 mph in both the eastbound and westbound direction. A five-year accident study was also conducted along SE 64th St between 116th and 120th, and there was one reported accident. This accident involved one vehicle traveling westbound, hitting a parked vehicle.

The use of physical measures such as speed humps are limited to streets where the majority of motorists are exceeding the posted speed limit by 10 mph. These guidelines were established based on the impact these measures have on emergency response. At this time, SE 64th St does not qualify for physical measures.

To address those motorists choosing to drive faster than the posted speed limit, we encourage you and your neighbors to participate in one of our education programs as described on page 3 of this report. One of the options that would work well for the situation you've described is to borrow a radar dolly. The radar dolly displays a vehicle's speed on a reader board. The radar dolly has been effective in decreasing vehicle speeds in many areas of Bellevue by encouraging motorists to reduce their speed. I encourage you to talk to your neighbors along SE 64th St to determine if they are interested in having a radar dolly placed near their home. Once we receive a radar dolly request form, City staff will make arrangements for both the drop-off and pick-up of the radar dolly. If you would like to request police enforcement, please do so by calling 425-577-5656. You can also submit a Traffic Service Request by filling out the following link: [http://bellevuewa.gov/traffic\\_service\\_request.htm](http://bellevuewa.gov/traffic_service_request.htm).

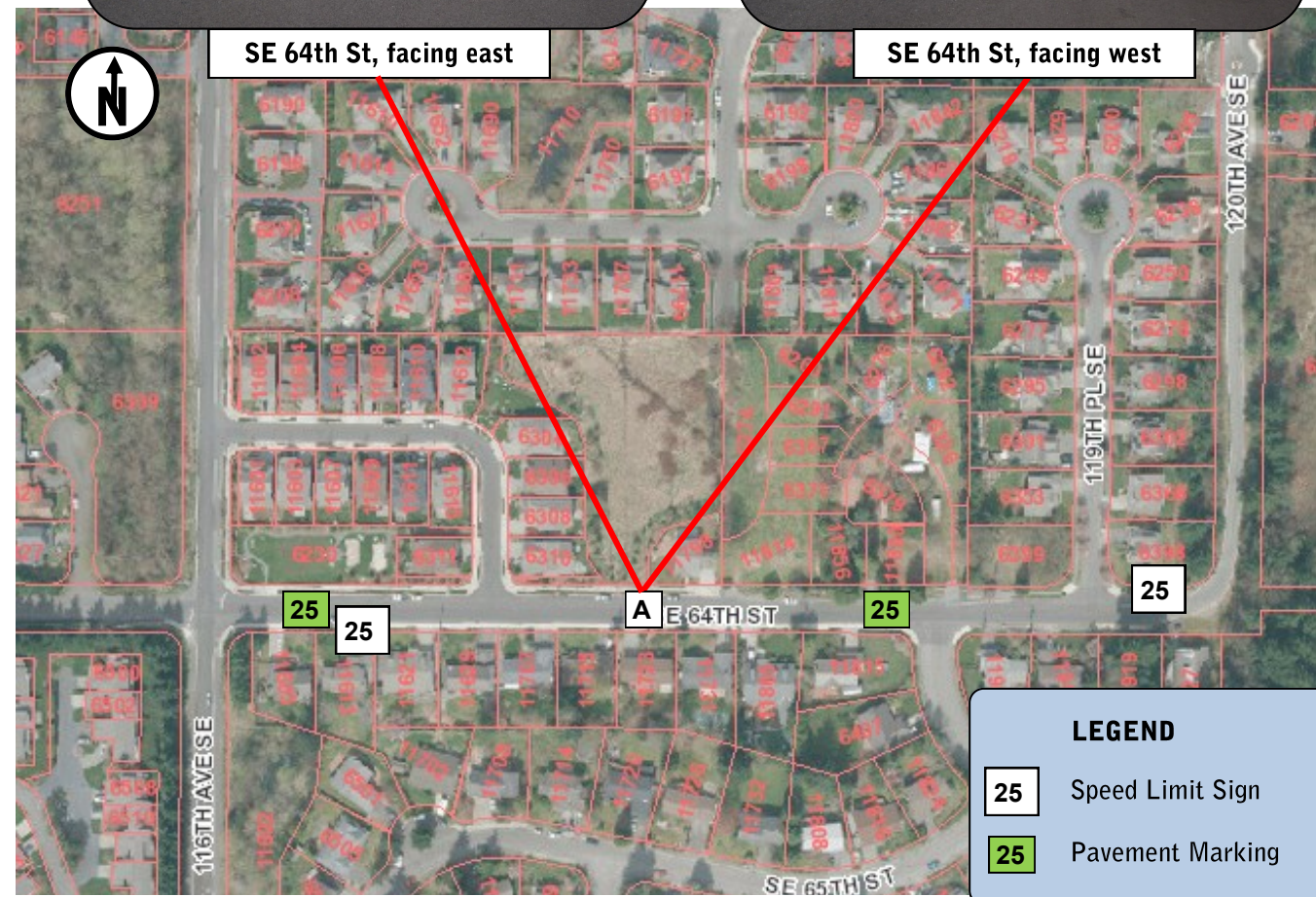
Again, thank you for sharing your concerns with us. We look forward to working with you and your neighbors on the education programs suggested to address your traffic concerns. Please feel free to contact me at [lglas@bellevuewa.gov](mailto:lglas@bellevuewa.gov) or 425-452-2841 to participate in any of the education programs described in this Traffic Action Plan.

Sincerely,

Linda Glas, P.E.







## Summary of Findings

Date	Location	Mid-Week Average Daily Traffic^	Average Speeds		85th% Speeds*	
			Eastbound	Westbound	Eastbound	Westbound
5/27-6/2	A SE 64th St east of 117th Ave SE	601	27	27	32	32

^Mid-Week Average includes data between Tuesday and Thursday \*85% of vehicles traveling at or below this speed

## Customized Traffic Action Plan for SE 64th St between 116th and

### Education, Encouragement, and Enforcement

By educating the community and encouraging safe driving, we can begin to change driver behavior and reduce vehicle speeds.



Educate the Community



Enhance Neighborhood Identity



Reduce Excessive Vehicle Speeds

### Neighborhood Speed Watch



Using a borrowed radar unit, you record information about vehicles you observe traveling at or above 30 mph. NTSS staff then locate the registered owners of the vehicles and send a letter to them asking for their cooperation in reducing their speed. A partner to assist you with the data collection is recommended.

### Radar Dolly



You can borrow and place a radar dolly on your street for up to two weeks. This unit gives motorists feedback on the speed at which they are driving, encouraging them to obey the speed limit. Should you like to borrow the radar dolly, please request it by calling (425) 452-6457 or sign up on [www.bellevuewa.gov/radardolly.htm](http://www.bellevuewa.gov/radardolly.htm).

### Police Enforcement



If you would like to request enforcement, please do so by calling (425) 577-5656. You can also submit a Traffic Service Request at [bellevuewa.gov/Traffic\\_Service\\_Request.htm](http://bellevuewa.gov/Traffic_Service_Request.htm). Please be specific about the location and times of your concern. The more information you can provide to Police, the better the chance they will be able to address your concern.

### Sign and Pledge Program



This program involves lending communities portable signs that encourage motorists to respect the neighborhood, drive responsibly, and drive 25 mph. The signs are moved by community volunteers from place to place throughout the neighborhood every few days. The second part of the program is a neighborhood pace car program. Residents who pledge to drive responsibly and drive the speed limit on all neighborhood streets receive magnetic bumper stickers or window clings to place on their vehicles. As these motorists drive 25 mph on residential streets, they set the pace for drivers behind them.

