

My Action Plan for 165th Ave NE north of NE 12th St

Are you feeling inspired to take action to address the traffic concerns on 165th Ave NE north of NE 12th St? Here is a checklist to help you get started:

- ☐ Talk to my neighbors and share the City's findings and recommendations
- ☐ List interested neighbors who want to help me with efforts:

- ☐ Decide the educational programs we want to participate in:
 - ☐ Neighborhood Speed Watch
 - ☐ Radar Dolly
 - ☐ Sign and Pledge Program
- ☐ Contact City staff to set-up a training session and get materials

Notes:

More info

Find out more about these recommendations in our **Residential Traffic Guidebook** or by logging on to **Streets are for Everyone (SAFE)**—Neighborhood Traffic Safety Services' blog.

Blog: <http://bellevuentss.wordpress.com>

Guidebook: http://www.bellevuewa.gov/pdf/Transportation/Guidebook_Web.pdf



TRAFFIC ACTION PLAN



2015-008 165th Ave NE north of NE 12th St

July 24, 2015



Bellevue, WA 98008

Subject: Speeding Concerns on 165th Ave NE north of NE 12th St

Dear 

Thank you for contacting Neighborhood Traffic Safety Services and letting us know your concerns with vehicle speeds on 165th Ave NE. We have completed a field review and data analysis and compiled this information into the enclosed Traffic Action Plan (TAP), as well as our recommendations.

Speed studies were conducted on 165th Ave NE near your home. The speed studies were conducted May 16-22, 2015. These studies show 85% of motorists are traveling at or below 29 mph in the northbound direction and at or below 28 mph in the southbound direction. A five-year accident study was also conducted along 165th Ave NE between NE 12th St and Northup Way, and there was one reported accident. This was a fixed object accident involving one vehicle traveling southbound, hitting a mailbox stand. The cause of this accident was driver inattention.

The use of physical measures such as speed humps are limited to streets where the majority of motorists are exceeding the posted speed limit by 10 mph. These guidelines were established based on the impact these measures have on emergency response. At this time, 165th Ave NE does not qualify for physical measures.

To address those motorists choosing to drive faster than the posted speed limit, we encourage you and your neighbors to participate in one of our education programs as described on page 3 of this report. One of the options that would work well for the situation you've described is to borrow a radar dolly. The radar dolly displays a vehicle's speed on a reader board. The radar dolly has been effective in decreasing vehicle speeds in many areas of Bellevue by encouraging motorists to reduce their speed. I encourage you to fill out the radar dolly request form. Once we receive this form from you, City staff will contact you to make arrangements for both the drop-off and pick-up of the radar dolly at your home.

With regards to your request for a crosswalk across 164th Ave NE at NE 12th St, the City's Traffic Engineering Division began its assessment for a crosswalk installation and gathered video of pedestrian activity in the area. The City's initial findings are that this is a potential site for a crosswalk; however, there are additional assessments that need to take place. The City has plans for pavement overlay of 164th Ave NE between NE 12th St and Northup Way that affects the analysis and implementation of any improvements. The City will be repaving this section of roadway next summer and at that time, the City will modify the curb ramps to better accommodate access under the Americans with Disabilities Act (ADA). Additionally, Traffic Engineering will be evaluating lighting for the intersection in more detail as well as considering other measures that would improve safety in this area. With

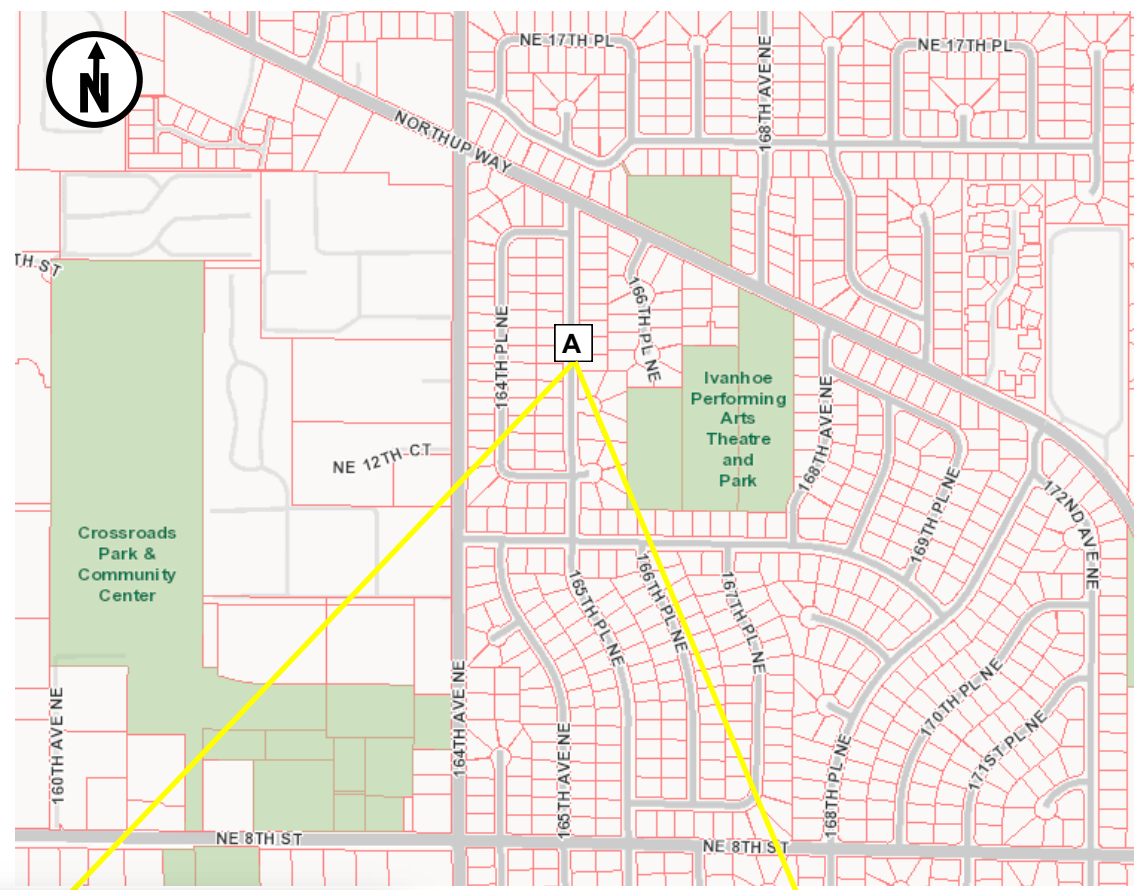


limited resources and many needs citywide, the City needs to prioritize resources and implement them in the most efficient manner which often means implementing improvements in conjunction with other work that is already planned. Also, with sidewalk or walkway on both sides of the street and a full signal at NE 8th St, there are alternatives for pedestrians to utilize in the vicinity. However, the City will be working to provide more convenient options for the neighborhood. If you would like to discuss this further, please call Kurt Latt, Senior Transportation Engineer, at 425-452-6020.

Again, thank you for sharing your concerns with us. We look forward to working with you and your neighbors on the education programs suggested to address your traffic concerns. Please feel free to contact me at lglas@bellevuewa.gov or 425-452-2841 to participate in any of the education programs described in this Traffic Action Plan.

Sincerely,

Linda Glas, P.E.



165th Ave NE facing north



165th Ave NE facing south



Neighborhood Traffic Safety Services
www.bellevuewa.gov/traffic_services.htm
 425-452-6457



Summary of Findings

Date of Study	Location of Study	Average Daily Traffic	Average Speeds		85th% Speeds*	
			Northbound	Southbound	Northbound	Southbound
5/16-5/22	A 165th Ave NE	446	23	23	29	28

*85% of vehicles traveling at or below this speed (mph)

Customized Traffic Action Plan for 165th Ave NE north of NE 12th St

Education, Encouragement, and Enforcement

By educating the community and encouraging safe driving, we can begin to change driver behavior and reduce vehicle speeds.

- Educate the Community
- Enhance Neighborhood Identity
- Reduce Excessive Vehicle Speeds

Neighborhood Speed Watch



Using a borrowed radar unit, you record information about vehicles you observe traveling at or above 30 mph. NTSS staff then locate the registered owners of the vehicles and send a letter to them asking for their cooperation in reducing their speed. A partner to assist you with the data collection is recommended.

Radar Dolly



You can borrow and place a radar dolly on your street for up to two weeks. This unit gives motorists feedback on the speed at which they are driving, encouraging them to obey the speed limit. Should you like to borrow the radar dolly, please request it by calling (425) 452-6457 or sign up on www.bellevuewa.gov/radardolly.htm.

Sign and Pledge Program



This program involves lending communities portable signs that encourage motorists to respect the neighborhood, drive responsibly, and drive 25 mph. The signs are moved by community volunteers from place to place throughout the neighborhood every few days. The second part of the program is a neighborhood pace car program. Residents who pledge to drive responsibly and drive the speed limit on all neighborhood streets receive magnetic bumper stickers or window clings to place on their vehicles. As these motorists drive 25 mph on residential streets, they set the pace for drivers behind them.



Neighborhood Traffic Safety Services
www.bellevuewa.gov/traffic_services.htm
 425-452-6457

