

## My Action Plan for SE 29th St

Are you feeling inspired to take action to address the traffic concerns on SE 29th St? Here is a checklist to help you get started:

- ☐ Talk to my neighbors and share the City's findings and recommendations
- ☐ List interested neighbors who want to help me with efforts:

\_\_\_\_\_

\_\_\_\_\_

\_\_\_\_\_

- ☐ Decide the educational programs we want to participate in:
  - ☐ Neighborhood Speed Watch
  - ☐ Radar Dolly
  - ☐ Sign and Pledge Program
- ☐ Contact City staff to set-up a training session and get materials

Notes:

\_\_\_\_\_

\_\_\_\_\_

\_\_\_\_\_

\_\_\_\_\_

\_\_\_\_\_

\_\_\_\_\_

\_\_\_\_\_

\_\_\_\_\_

### More info

Find out more about these recommendations in our **Residential Traffic Guidebook** or by logging on to **Streets are for Everyone (SAFE)**—Neighborhood Traffic Safety Services' blog.

**Blog:** <http://bellevuentss.wordpress.com>

**Guidebook:** [http://www.bellevuewa.gov/pdf/Transportation/Guidebook\\_Web.pdf](http://www.bellevuewa.gov/pdf/Transportation/Guidebook_Web.pdf)



## TRAFFIC ACTION PLAN



BELLEVUE  
NEIGHBORHOOD  
TRAFFIC  
SAFETY  
SERVICES

## 2015-006 SE 29th St



July 13, 2015

Bellevue, WA 98008

Subject: Speeding Concerns on SE 29th St

Dear 

Thank you for contacting Neighborhood Traffic Safety Services and letting us know your concerns with vehicle speeds on SE 29th St. We have completed a field review and data analysis and compiled this information into the enclosed Traffic Action Plan (TAP), as well as our recommendations.

Speed studies were conducted on SE 29th St near your home. The speed studies were conducted May 11-17, 2015. These studies show 85% of motorists are traveling at or below 26 mph in both the eastbound and westbound direction. An accident study was also conducted along SE 29th St between 162nd Ave SE and 165th Ave SE. There were two reported right angle accidents at the intersection of SE 29th St and 165th Ave SE — one in 2008 and the other in 2009. There have been no reported accidents along this corridor since the traffic circle was installed at SE 29th St and 165th Ave SE.

You requested the installation of speed humps to slow down speeding motorists. Physical measures such as speed humps are limited to streets where the majority of motorists are exceeding the posted speed limit by 10 mph. These guidelines were established based on the impact these measures have on emergency response. There were 5,212 total vehicles (eastbound and westbound) recorded during our 7-day study, and only 2 of these vehicles were recorded travelling over 35 mph at this location.

Construction of the West Lake Sammamish Parkway Project caused motorists to find alternate routes, particularly during southbound closures of the Parkway. Motorists chose to detour through neighborhoods including Tam O'Shanter, Crossroads, Lake Hills, and Spiritridge. Since the completion of this project, spillover traffic onto neighborhood streets has decreased due to motorists returning to West Lake Sammamish Parkway.

To address those motorists choosing to drive faster than the posted speed limit, we encourage you and your neighbors to participate in one of our education programs as described on page 3 of this report. One of the options that would work well for the situation you've described is to borrow a radar dolly. The radar dolly displays a vehicle's speed on a reader board. The radar dolly has been effective in decreasing vehicle speeds in many areas of Bellevue by encouraging motorists to reduce their speed. I encourage you to fill out the radar dolly request form. Once we receive this form from you, City staff will contact you to make arrangements for both the drop-off and pick-up of the radar dolly at your home.

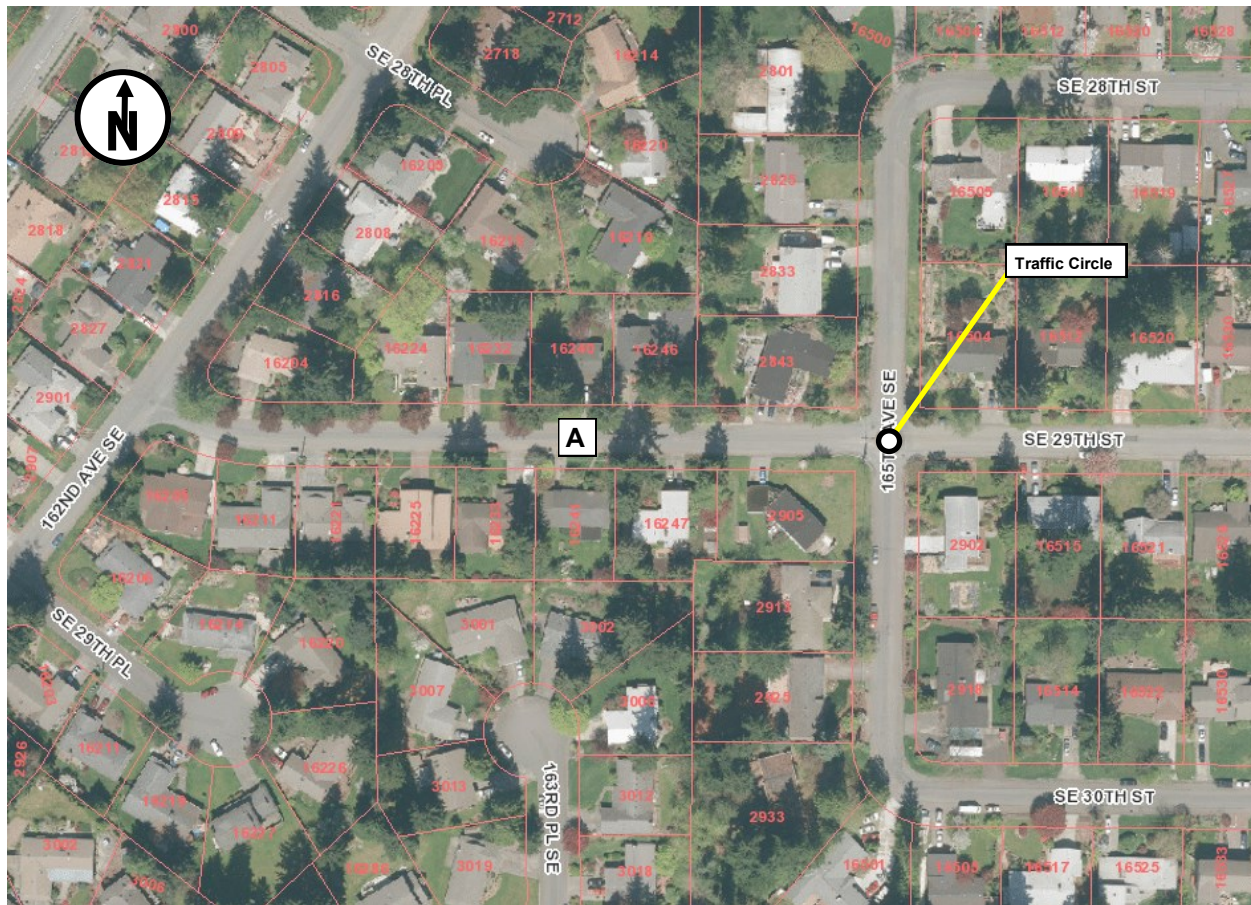




Again, thank you for sharing your concerns with us. We look forward to working with you and your neighbors on the education programs suggested to address your traffic concerns. Please feel free to contact me at [lglas@bellevuewa.gov](mailto:lglas@bellevuewa.gov) or 425-452-2841 to participate in any of the education programs described in this Traffic Action Plan.

Sincerely,

Linda Glas, P.E.



## Summary of Findings

Date of Study	Location of Study	Average Daily Traffic	Average Speeds		85th% Speeds*	
			Eastbound	Westbound	Eastbound	Westbound
5/11-5/17	<b>A</b> SE 29th St	841	22	22	26	26

\*85% of vehicles traveling at or below this speed (mph)



Neighborhood Traffic Safety Services  
[www.bellevuewa.gov/traffic\\_services.htm](http://www.bellevuewa.gov/traffic_services.htm)  
 425-452-6457



## Customized Traffic Action Plan for SE 29th St

### Education, Encouragement, and Enforcement

By educating the community and encouraging safe driving, we can begin to change driver behavior and reduce vehicle speeds.



Educate the Community



Enhance Neighborhood Identity



Reduce Excessive Vehicle Speeds

### Neighborhood Speed Watch



Using a borrowed radar unit, you record information about vehicles you observe traveling at or above 30 mph. NTSS staff then locate the registered owners of the vehicles and send a letter to them asking for their cooperation in reducing their speed. A partner to assist you with the data collection is recommended.

### Radar Dolly



You can borrow and place a radar dolly on your street for up to two weeks. This unit gives motorists feedback on the speed at which they are driving, encouraging them to obey the speed limit. Should you like to borrow the radar dolly, please request it by calling (425) 452-6457 or sign up on [www.bellevuewa.gov/radardolly.htm](http://www.bellevuewa.gov/radardolly.htm).

### Sign and Pledge Program



This program involves lending communities portable signs that encourage motorists to respect the neighborhood, drive responsibly, and drive 25 mph. The signs are moved by community volunteers from place to place throughout the neighborhood every few days. The second part of the program is a neighborhood pace car program. Residents who pledge to drive responsibly and drive the speed limit on all neighborhood streets receive magnetic bumper stickers or window clings to place on their vehicles. As these motorists drive 25 mph on residential streets, they set the pace for drivers behind them.



Neighborhood Traffic Safety Services  
[www.bellevuewa.gov/traffic\\_services.htm](http://www.bellevuewa.gov/traffic_services.htm)  
 425-452-6457

