

### My Action Plan for SE 40th St near 139th Ave SE

Are you feeling inspired to take action to address the traffic concerns on SE 40th St near 139th Ave SE? Here is a checklist to help you get started:

- Talk to my neighbors and share the City's findings and recommendations
- List interested neighbors who want to help me with efforts:

---



---



---

- Decide the educational programs we want to participate in:
  - Neighborhood Speed Watch
  - Radar Dolly
  - Sign and Pledge Program
- Contact City staff to set-up a training session and get materials

Notes:

---



---



---



---



---



---



---

### More info

Find out more about these recommendations in our **Residential Traffic Guidebook** or by logging on to **Streets are for Everyone (SAFE)**—Neighborhood Traffic Safety Services' blog.

- Blog:** <http://bellevuentss.wordpress.com>
- Guidebook:** [http://www.bellevuewa.gov/pdf/Transportation/Guidebook\\_Web.pdf](http://www.bellevuewa.gov/pdf/Transportation/Guidebook_Web.pdf)



# TRAFFIC ACTION PLAN



## 2013-025 SE 40th St near 139th Ave SE

November 22, 2013

Bellevue, WA 98006

Subject: Speeding Concerns on SE 40th St near 139th Ave SE

Dear [REDACTED]

Thank you for contacting Neighborhood Traffic Safety Services and letting us know your concerns with vehicle speeds on SE 40th St near 139th Ave SE. We have completed a field review and data analysis and compiled this information into the enclosed Traffic Action Plan (TAP), as well as our recommendations.

Speed studies were conducted on SE 40th St east of 139th Ave SE. These studies, conducted in October, show 85% of motorists are traveling at or below 29 mph in the eastbound direction and at or below 31 mph in the westbound direction. The posted speed along this street is 25 mph. To address vehicle speeds such as those on SE 40th St, we focus on education measures rather than physical ones, such as speed humps. Speed humps are limited to streets where the majority of motorists are exceeding the posted speed limit by 10 mph. These guidelines were established based on the impact these measures have on emergency response, and their use is reserved for locations with significant speeding problems.

Another concern you mentioned was the location of the school bus stop and pedestrian safety due to the lack of sidewalks. City staff conducted a field review to observe the morning bus stop pick-up. Motorists parked their vehicles on both sides of SE 40th St, dropped off students, and waited until the school bus arrived. Students gathered on the north side of SE 40th St and then boarded the school bus traveling westbound. Although there is no sidewalk here, there were no safety concerns observed at this school bus stop location. In locations where parents and/or residents are concerned about the location of school bus stops and/or walking conditions, the Bellevue School District has a Safe Walk Committee that reviews these types of concerns. They strive to establish safe walking routes and school bus stop locations to ensure the safety of students. Please contact the Bellevue School District should you wish to discuss your school bus stop concerns on SE 40th St. Information can be found at: <http://www.bsd405.org/about-us/departments/transportation-services/safe-walk-information.aspx>.

Many developments such as yours were built in the 1950s and had no code requirements to install sidewalks. In 2007, the Neighborhood sidewalk Program was established to help address sidewalk needs and priorities of the City's many neighborhoods. If you and your neighbors would like SE 40th St to be considered for a sidewalk, we encourage you to become involved in this program and the prioritization process for sidewalk projects. You can read more about the program here: <http://www.ci.bellevue.wa.us/neighborhood-sidewalk-plan.htm>.



We encourage you and your neighbors to participate in one of our education programs as described on page 3 of this report. One of the options that would work well for the situation you've described is to borrow a radar dolly. The radar dolly displays a vehicle's speed on a reader board. The radar dolly has been effective in decreasing vehicle speeds in many areas of Bellevue by encouraging motorists to reduce their speed. I encourage you to fill out the radar dolly request form. Once we receive this form from you, City staff will contact you to make arrangements for both the drop-off and pick-up of the radar dolly at your home.

Again, thank you for sharing your concerns with us. We look forward to working with you and your neighbors on the education programs suggested to address your traffic concerns. Please feel free to contact me at [lglas@bellevuewa.gov](mailto:lglas@bellevuewa.gov) or 425-452-2841 to participate in any of the education programs described in this Traffic Action Plan.

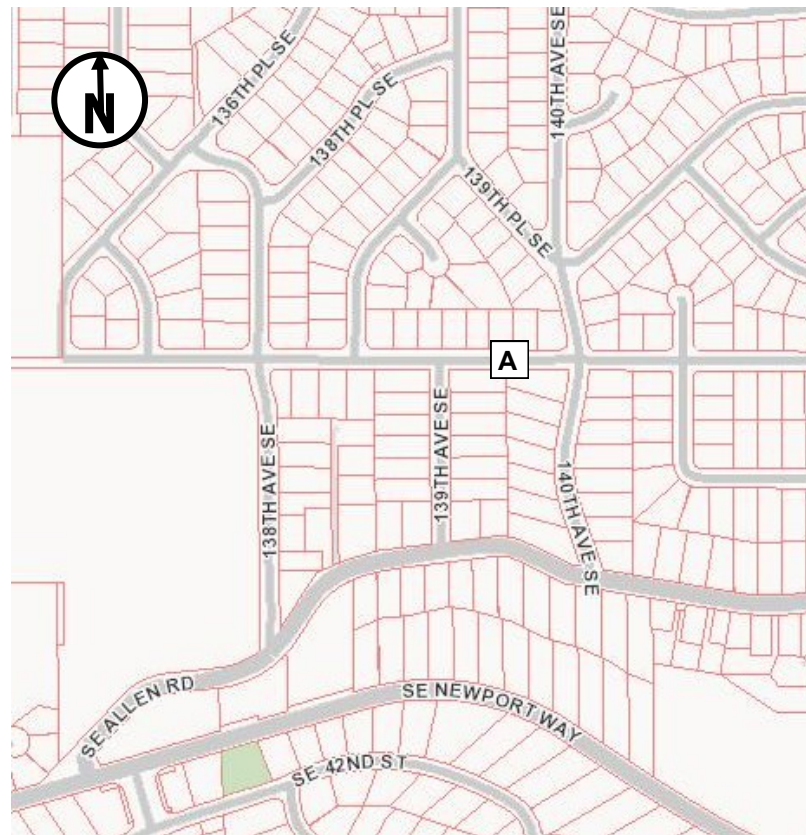
Sincerely,

*Linda Glas*

Linda Glas, P.E.



SE 40th St east of 139th Ave SE, facing west



Summary of Findings

Date of Study	Location of Study	Average Daily Traffic	Average Speeds		85th% Speeds*	
			Eastbound	Westbound	Eastbound	Westbound
Oct 2013	A SE 40th St east of 139th Ave SE	175	24	26	29	31

\*85% of vehicles traveling at or below this speed



Customized Traffic Action Plan for SE 40th St near 139th Ave SE

Education, Encouragement, and Enforcement

By educating the community and encouraging safe driving, we can begin to change driver behavior and reduce vehicle speeds.

- Educate the Community
- Enhance Neighborhood Identity
- Reduce Excessive Vehicle Speeds

Neighborhood Speed Watch

Using a borrowed radar unit, you record information about vehicles you observe traveling at or above 30 mph. NTSS staff then locate the registered owners of the vehicles and send a letter to them asking for their cooperation in reducing their speed. A partner to assist you with the data collection is recommended.

Radar Dolly

You can borrow and place a radar dolly on your street for up to two weeks. This unit gives motorists feedback on the speed at which they are driving, encouraging them to obey the speed limit. Should you like to borrow the radar dolly, please request it by calling (425) 452-6457 or sign up on [www.bellevuewa.gov/radardolly.htm](http://www.bellevuewa.gov/radardolly.htm).

Sign and Pledge Program

This program involves lending communities portable signs that encourage motorists to respect the neighborhood, drive responsibly, and drive 25 mph. The signs are moved by community volunteers from place to place throughout the neighborhood every few days. The second part of the program is a neighborhood pace car program. Residents who pledge to drive responsibly and drive the speed limit on all neighborhood streets receive magnetic bumper stickers or window clings to place on their vehicles. As these motorists drive 25 mph on residential streets, they set the pace for drivers behind them.

