

My Action Plan for 147th Ave SE south of Main St

Are you feeling inspired to take action to address the traffic concerns on 147th Ave SE south of Main St? Here is a checklist to help you get started:

- Talk to my neighbors and share the City’s findings and recommendations
- List interested neighbors who want to help me with efforts:

- Decide the educational programs we want to participate in:
 - Neighborhood Speed Watch
 - Radar Dolly
 - Sign and Pledge Program
- Contact City staff to set-up a training session and get materials

Notes:

More info

Find out more about these recommendations in our **Residential Traffic Guidebook** or by logging on to **Streets are for Everyone (SAFE)**—Neighborhood Traffic Safety Services’ blog.

- Blog:** <http://bellevuentss.wordpress.com>
- Guidebook:** http://www.bellevuewa.gov/pdf/Transportation/Guidebook_Web.pdf



TRAFFIC ACTION PLAN



2013-015 147th Ave SE south of Main St

September 11, 2013

Bellevue, WA 98007

Subject: Speeding Concerns on 147th Ave SE south of Main St

Dear [REDACTED]

Thank you for contacting Neighborhood Traffic Safety Services and letting us know your concerns with vehicle speeds on 147th Ave SE south of Main St. We have completed a field review and data analysis and compiled this information into the enclosed Traffic Action Plan (TAP), as well as our recommendations.

Speed studies were conducted on 147th Ave SE south of Main St. From the speed studies conducted in June/July 2013, 85% of motorists were traveling at or below 20 mph in the northbound direction and at or below 18 mph in the southbound direction. Also, the average speeds on 147th Ave SE were recorded at 12 mph in the northbound direction and 11 mph in the southbound direction. Volume studies were also conducted and the average daily traffic on 147th Ave SE was recorded at 293 vehicles.

Your request contained the following comment: “I suggest the speed limit should be dropped to 15 mph and two speed bumps put in to slow the speeders.” Speed limits of less than 25 mph are reserved for school zones (before school and after school) and are signed for 20 mph. Vehicle speeds along 147th Ave SE indicate that the majority of motorists are driving this roadway appropriately for conditions, thus the posted speed limit will remain 25 mph. Physical measures such as speed humps are limited to streets where the majority of motorists are exceeding the posted speed limit by 10 mph. These guidelines were established based on the impact these measures have on emergency response, while reserving their use for those locations with significant speeding problems. On 147th Ave SE, 15% of traffic would need to be exceeding 35 mph. Based on our speed study, 147th Ave SE does not qualify for speed humps. During our weeklong study, no vehicles were recorded travelling over 35 mph.

We understand your concerns with the potholes and lack of lighting along the side streets east and west of 147th Ave SE. Because these are not public streets, they are not maintained by the City of Bellevue. Please report these concerns to your apartment manager, as it is their responsibility.

Educating the community is an important step in addressing traffic concerns in neighborhoods, and we encourage you and your neighbors to participate in one of our education programs. Our studies show that the majority of speeders on neighborhood streets are local residents. By educating the community and encouraging safe driving, we can begin to change driver behavior and reduce vehicle speeds. We have included details on these programs on page 3.



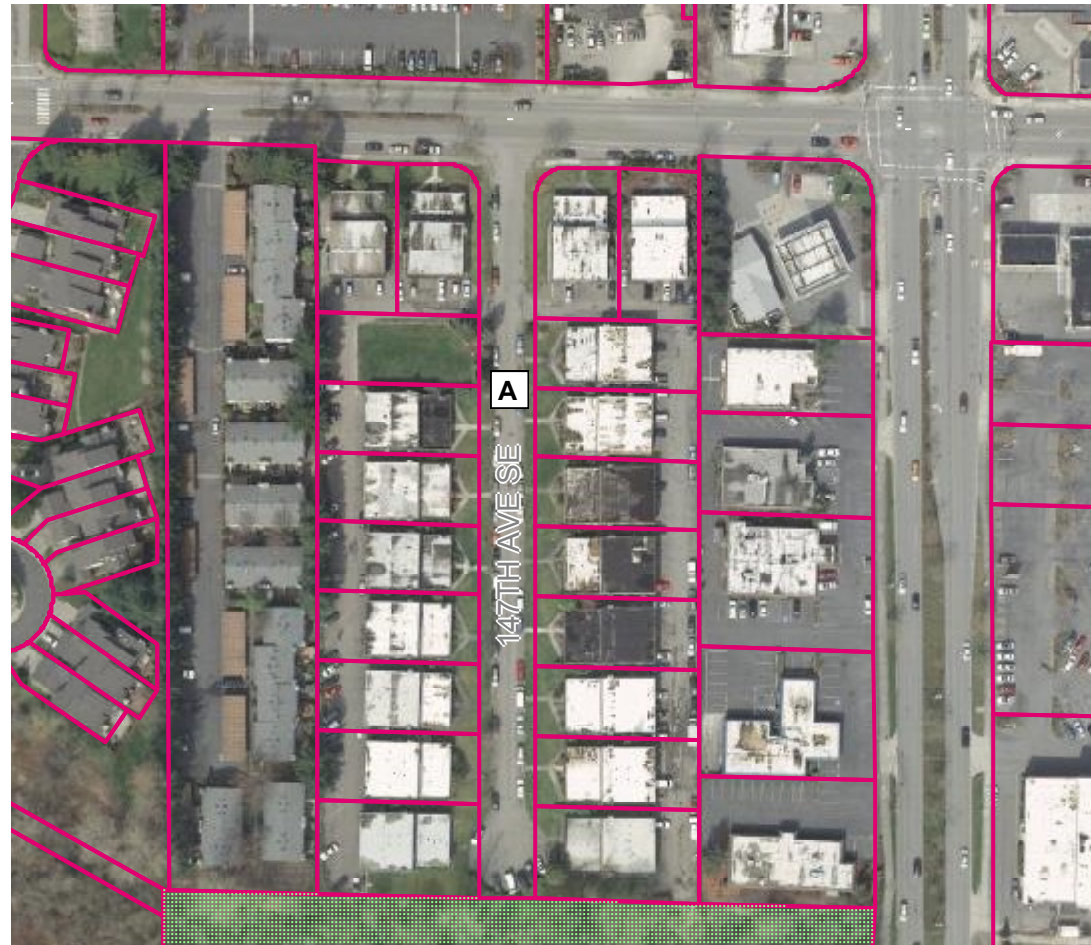
We have included in this mailing our packets geared toward children that include a CD and interactive video on traffic safety basics. Sharing these items and other activities can be a way for families with children in your neighborhood to encourage awareness of current traffic issues and how everyone can be part of the solution.

We appreciate your concerns and look forward to working with you. Please feel free to contact me at lglas@bellevuewa.gov or 425-452-2841 to participate in any of the education programs described in this Traffic Action Plan.

Sincerely,

Linda Glas

Linda Glas, P.E.



Summary of Findings

Date of Study	Location of Study	Average Daily Traffic	Average Speeds		85th% Speeds*	
			Northbound	Southbound	Northbound	Southbound
June/July 2013	A 147th Ave SE south of Main St	293	12	11	20	18

*85% of vehicles traveling at or below this speed



Customized Traffic Action Plan for 147th Ave SE south of Main St

Education, Encouragement, and Enforcement

By educating the community and encouraging safe driving, we can begin to change driver behavior and reduce vehicle speeds.

- Educate the Community
- Enhance Neighborhood Identity
- Reduce Excessive Vehicle Speeds

Neighborhood Speed Watch

Using a borrowed radar unit, you record information about vehicles you observe traveling at or above 30 mph. NTSS staff then locate the registered owners of the vehicles and send a letter to them asking for their cooperation in reducing their speed. A partner to assist you with the data collection is recommended.

Radar Dolly

You can borrow and place a radar dolly on your street for up to two weeks. This unit gives motorists feedback on the speed at which they are driving, encouraging them to obey the speed limit. Should you like to borrow the radar dolly, please request it by calling (425) 452-6457 or sign up on www.bellevuewa.gov/radardolly.htm.

Sign and Pledge Program

This program involves lending communities portable signs that encourage motorists to respect the neighborhood, drive responsibly, and drive 25 mph. The signs are moved by community volunteers from place to place throughout the neighborhood every few days. The second part of the program is a neighborhood pace car program. Residents who pledge to drive responsibly and drive the speed limit on all neighborhood streets receive magnetic bumper stickers or window clings to place on their vehicles. As these motorists drive 25 mph on residential streets, they set the pace for drivers behind them.

