

My Action Plan for NE 31st Pl (100th Ave NE to 102nd Ave NE)

Are you feeling inspired to take action to address the traffic concerns on NE 31st Pl (100th Ave NE to 102nd Ave NE)? Here is a checklist to help you get started:

- ☐ Talk to my neighbors and share the City's findings and recommendations
- ☐ List interested neighbors who want to help me with efforts:

- ☐ Decide the educational programs we want to participate in:
 - ☐ Neighborhood Speed Watch
 - ☐ Radar Dolly
 - ☐ Sign and Pledge Program
- ☐ Contact City staff to set-up a training session and get materials

Notes:

More info

Find out more about these recommendations in our **Residential Traffic Guidebook** or by logging on to **Streets are for Everyone (SAFE)**—Neighborhood Traffic Safety Services' blog.

Blog: <http://bellevuentss.wordpress.com>

Guidebook: http://www.bellevuewa.gov/pdf/Transportation/Guidebook_Web.pdf



TRAFFIC ACTION PLAN



BELLEVUE
NEIGHBORHOOD
TRAFFIC
SAFETY
SERVICES

2013-008 NE 31st Pl (100th Ave NE to 102nd Ave NE)

July 17, 2013

Bellevue, WA 98004

Subject: Speeding and Volume Concerns on NE 31st Pl (100th Ave NE to 102nd Ave NE)

Dear [REDACTED]

Thank you for contacting Neighborhood Traffic Safety Services and letting us know your concerns with vehicle speeds and volumes on NE 31st Pl between 100th Ave NE and 102nd Ave NE. We have completed a field review and data analysis and compiled this information into the enclosed Traffic Action Plan (TAP), as well as our recommendations.

Speed studies were conducted on NE 31st Pl east of 100th Ave NE. From the speed studies conducted in April 2013, 85% of motorists were traveling at or below 27 mph on NE 31st Pl. Also, the average speeds on NE 31st Pl were recorded at 18 to 19 mph. Vehicle speeds along NE 31st Pl are lower than average for 25 mph neighborhood streets in Bellevue and indicate that the majority of motorists are driving this roadway appropriately for conditions. Volume studies were also conducted and the average daily traffic on NE 31st Pl was recorded at 146 vehicles. According to our records, this is the first speed and volume study conducted along this corridor, so we are unable to address your question regarding an increase in traffic in the last ten years. However, the April 2013 volume study recording the average daily traffic at 146 vehicles indicate that this is a low volume neighborhood street.

Your e-mail contained the following request: "I think a stop sign at the top of the hill (NE 31st Pl and 100th Ave NE) will make drivers slow down and support a safer neighborhood." One of the most common requests we receive is for the installation of stop signs to address speeding in neighborhoods. When stop signs are used as "nuisances" or "speed breakers," there is a high incidence of drivers intentionally violating the stop. When vehicles do stop, the speed reduction is effective only in the immediate area of the stop sign, since a large percentage of motorists then increase their speed to make up for lost time. This results in increased mid-block speeds and can also lead to unsafe operating behaviors at intersections where unwarranted stop signs are installed. For these reasons, we do not use stop signs as speed control devices. Instead, they are used to improve safety at intersections where traffic volumes, historical accidents records, or assignment of right-of-way indicate a benefit from the added traffic control as determined by the City's Traffic Engineering division. The intersection of NE 31st Pl and 100th Ave NE is currently being reviewed by the Traffic Engineering division for stop sign warrants. An initial assessment of the city's accident data base over a 5-year period did not show any reported accidents for the study intersection or street segments. Should new stop signs meet conditions for installation, the city will expeditiously proceed to install them as appropriate.



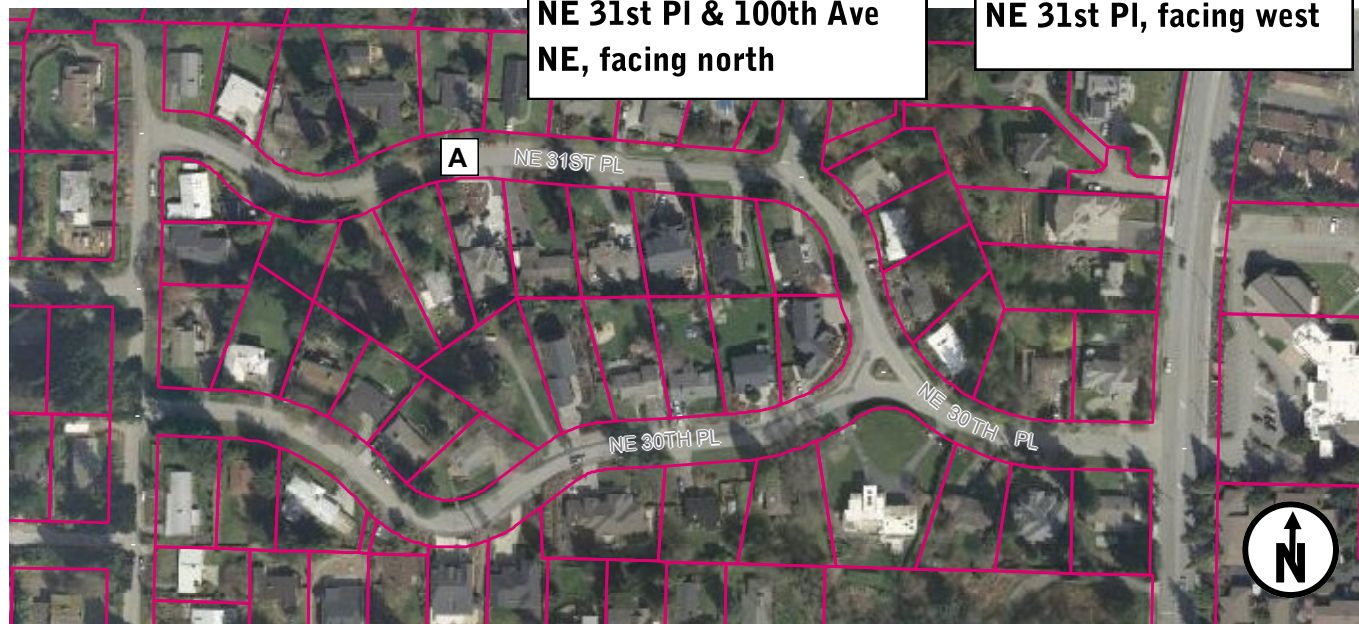
We encourage you and your neighbors to participate in one of our traffic education programs. To address your concerns with speeding, the City of Bellevue has a radar dolly that you can borrow. The radar dolly displays the speed of motorists, encouraging them to reduce their speed. The radar dolly has been effective in decreasing vehicle speeds in many areas of Bellevue. I encourage you to fill out the radar dolly request form. Once we receive this form from you, City staff will contact you to make arrangements for both the drop-off and pick-up of the radar dolly.

We appreciate your concerns and look forward to working with you. Please feel free to contact me at lglas@bellevuewa.gov or 425-452-2841 to participate in any of the education programs described in this Traffic Action Plan. For questions pertaining to your stop sign request, please contact Kurt Latt at klatt@bellevuewa.gov or 425-452-6020.

Sincerely,

Linda Glas

Linda Glas, P.E.



Summary of Findings

Date of Study	Location of Study	Average Daily Traffic	Average Speeds		85th% Speeds*	
			Eastbound	Westbound	Eastbound	Westbound
April 2013	A NE 31st PI east of 100th Ave NE	146	18	19	25	27

*85% of vehicles traveling at or below this speed



Customized Traffic Action Plan for NE 31st PI (100th Ave NE to 102nd Ave NE)

Education, Encouragement, and Enforcement

By educating the community and encouraging safe driving, we can begin to change driver behavior and reduce vehicle speeds.



Educate the Community



Enhance Neighborhood Identity



Reduce Excessive Vehicle Speeds

Neighborhood Speed Watch



Using a borrowed radar unit, you record information about vehicles you observe traveling at or above 30 mph. NTSS staff then locate the registered owners of the vehicles and send a letter to them asking for their cooperation in reducing their speed. A partner to assist you with the data collection is recommended.

Radar Dolly



You can borrow and place a radar dolly on your street for up to two weeks. This unit gives motorists feedback on the speed at which they are driving, encouraging them to obey the speed limit. Should you like to borrow the radar dolly, please request it by calling (425) 452-6457 or sign up on www.bellevuewa.gov/radardolly.htm.

Sign and Pledge Program



This program involves lending communities portable signs that encourage motorists to respect the neighborhood, drive responsibly, and drive 25 mph. The signs are moved by community volunteers from place to place throughout the neighborhood every few days. The second part of the program is a neighborhood pace car program. Residents who pledge to drive responsibly and drive the speed limit on all neighborhood streets receive magnetic bumper stickers or window clings to place on their vehicles. As these motorists drive 25 mph on residential streets, they set the pace for drivers behind them.

