

## Next Steps

Here are tools we recommend you and your neighbors take active participation in as they have shown to be effective at reminding drivers that they are in a residential area. These tools allow you to become an integral part in the traffic safety process.

### Education, encouragement, and enforcement

#### Neighborhood Speed Watch

Using a borrowed radar unit, you record information about vehicles you observe traveling at or above 30 mph. NTSS staff then locate the registered owner of the vehicle and send a letter to them asking for their cooperation in reducing their speed. A partner to assist you with the data collection is recommended.

#### Radar Dolly

You can borrow and place a radar dolly on your street for up to two weeks. This unit gives motorists feedback on the speed at which they are driving, encouraging them to obey the speed limit. Request by calling (425) 452-6856 or sign up on [www.bellevuewa.gov/radardolly.htm](http://www.bellevuewa.gov/radardolly.htm).

#### Police Enforcement

If you would like to request enforcement, please do so by calling (425) 577-5656.

#### Sign and Pledge Program

This program involves lending communities portable signs that encourage motorists to respect the neighborhood, drive responsibly, and drive 25 mph. The signs are moved by community volunteers from place to place throughout the neighborhood every few days. The second part of the program is a neighborhood pace car program. Residents who pledge to drive responsibly and drive the speed limit on all neighborhood streets receive magnetic bumper stickers or window clings to place on their vehicles. As these motorists drive 25 mph on residential streets, they set the pace for drivers behind them.



**More information:** Find out more about these recommendations in our *Residential Traffic Guidebook* or by logging on to **Streets are for Everyone (SAFE)**—Neighborhood Traffic Safety Services' blog.

Blog: <http://bellevuentss.wordpress.com>

Guidebook: [http://www.bellevuewa.gov/pdf/Transportation/Guidebook\\_Web.pdf](http://www.bellevuewa.gov/pdf/Transportation/Guidebook_Web.pdf)



Neighborhood Traffic Safety Services  
[www.bellevuewa.gov/traffic\\_services.htm](http://www.bellevuewa.gov/traffic_services.htm)  
425-452-6856



# TRAFFIC ACTION PLAN

BELLEVUE  
NEIGHBORHOOD  
TRAFFIC  
SAFETY  
SERVICES



## 2012-019 169th Avenue SE south SE 26th Street

March 8, 2013

Subject: Speeding along 169th Avenue SE

Dear [REDACTED]

Thank you for contacting Neighborhood Traffic Safety Services and letting us know your concern with vehicle speeds and pedestrian safety on 169th Avenue SE. We have completed our field reviews and data analysis of this location and would like to share with you our findings and recommendations which we've outlined in this Traffic Action Plan (TAP).

We conducted speed studies in January, which showed average vehicle speeds were 23-25 mph and that 85% of motorists were traveling 30 mph or lower on this 25 mph street. Vehicle speeds along 169th Avenue SE are typical for neighborhood streets in Bellevue and does indicate that most drivers are driving this roadway appropriately for conditions. We do realize however, that there are those drivers who choose to drive faster than the speed limit and have some recommendations that may help address this concern.

First, we will be installing two 25 MPH pavement markings for both northbound and southbound directions on 169th Avenue SE between SE 26th and SE 28th Streets. Our experience has shown these to heighten motorists' attention to the speed limit.

Second, we encourage you and your neighbors to take advantage of our neighborhood traffic education programs, such as our neighborhood speed watch program or borrowing a radar dolly. We have found that in most cases, the motorists speeding are local residents who are familiar with the roadway and don't pay as much attention to how fast they are traveling. These tools educate motorists by making them more aware of their neighbors' concerns and encourage them to drive appropriately. We will also be sending your request to Police Traffic for enforcement. You can reach them directly by calling 425-577-5656.

As for the installation of more physical traffic calming measures such as speed humps, based on our field reviews and the data collected, they are not recommended. In general, our guidelines limit the use of speed humps to locations where 15% of motorists are exceeding 35 mph. This is due in part to limit the impact on emergency response times. For example, the use of speed humps reduces emergency response between 5 and 10 seconds per hump.

Again, thank you for taking the time to share your concerns. We have prepared this report specifically for your location and look forward to working with you. Please feel free to contact me at [lglas@bellevuewa.gov](mailto:lglas@bellevuewa.gov) to participate in any of these programs described in this Traffic Action Plan.

Sincerely,

Linda Glas, P.E.  
Neighborhood Traffic Safety Services  
Transportation Department

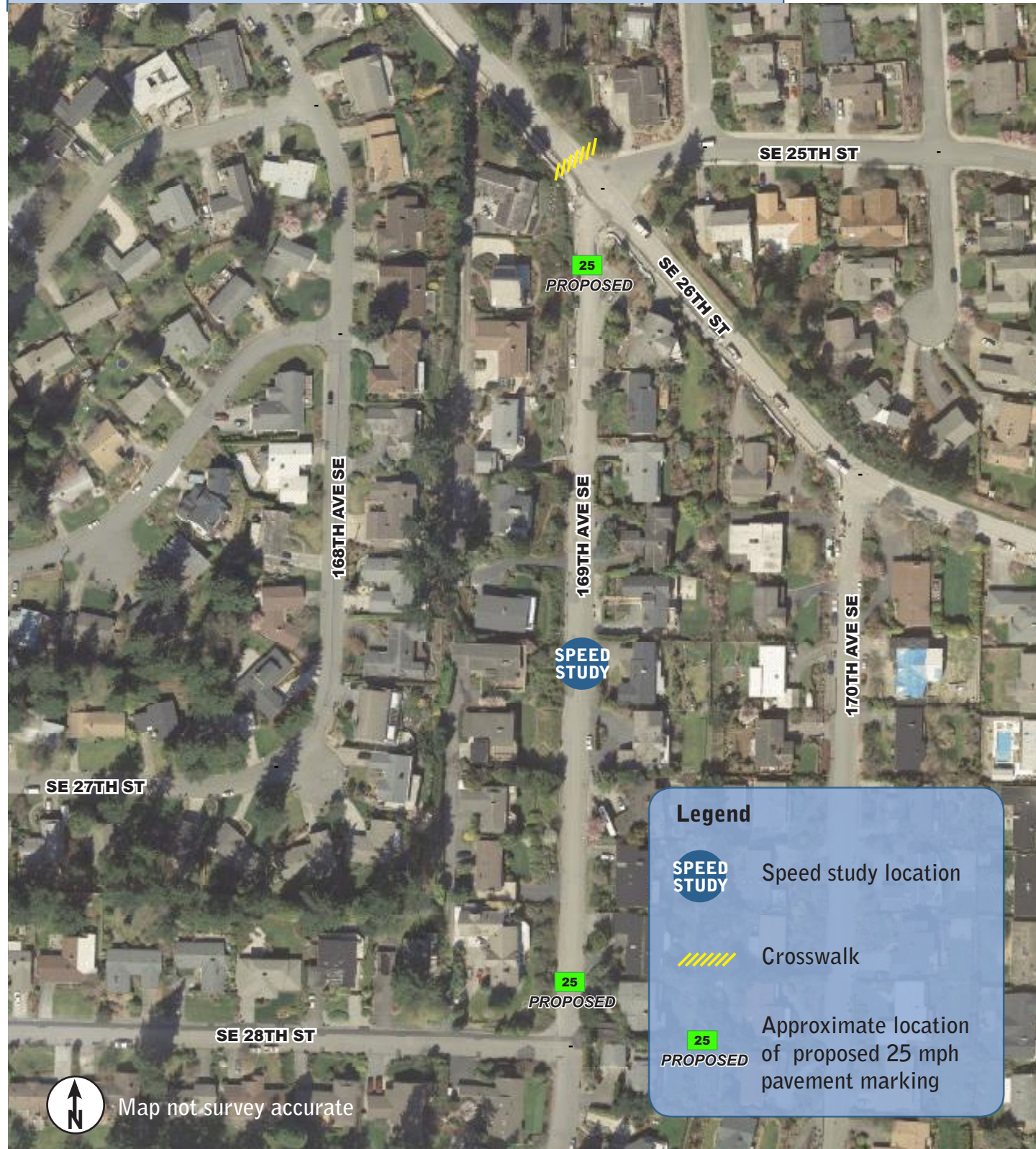


Neighborhood Traffic Safety Services /// Transportation Department /// City of Bellevue  
425-452-6856 [www.bellevuewa.gov/traffic\\_services.htm](http://www.bellevuewa.gov/traffic_services.htm)





## Existing Conditions



## Summary of Findings

Three primary concerns have been raised by you and your neighbors.... The findings below are supported by the data found on the bottom of this page.



## Speeding

The speed limit on 169th Avenue SE is 25 mph, with average speeds of 23-25 mph recorded during our speed studies. Our studies also indicated that 85% of motorists were traveling 30 mph or lower.

Based on our field reviews and the data collected, the use of physical measures such as speed humps are not recommended. In general, physical measures are triggered when 15% of motorists are exceeding the posted speed limit by 10 mph. The results from these studies indicate that this location does not meet this guideline.

These guidelines were established to limit the use of physical measures to locations where speeds are higher and also limit the impact to emergency response. As an example, the use of speed humps reduces emergency response 5-10 seconds per hump.

Pavement markings are used to note "25 MPH" at locations where drivers may need to be reminded of the posted speed limit.



## Pedestrian Safety

You noted a concern with the safety of pedestrians due to speeding motorists. A 5-year accident study was conducted along 169th Avenue SE from SE 26th Street to SE 28th Street, and there was one reported accident along this corridor. Further review of this accident indicated that it occurred in 2009 and involved a southbound motorist who intended to turn right on SE 28th Street. The driver drove past SE 28th Street and then started to back up, striking a southbound vehicle that had come to a stop. The cause of this accident was improper backing.

To address your concerns with speeding motorists and pedestrians (particularly school children), we have requested enforcement along 169th Avenue SE. Police Traffic can also be reached at 425-577-5656 should you like to contact them directly.



## Speed and volume results

Turn over for recommendations on what you can do



Date	Street	Average Daily Traffic	Average Speeds		85% Speeds <sup>A</sup>	
			Northbound	Southbound	Northbound	Southbound
1/7/13-1/13/13	169th Ave SE south of SE 26th St	348	25	23	30	29

<sup>A</sup>85% of vehicles traveling at or below this speed