

Next Steps

We are reviewing Highland Drive to determine the potential for a marked crosswalk and possible location. In addition, here are tools we recommend you and your neighbors actively participate in as they have shown to be effective at reminding drivers that they are in a residential area. These tools allow you to become an integral part in the traffic safety process.

Education, encouragement, and enforcement

Neighborhood Speed Watch

Using a borrowed radar unit, you record information about vehicles you observe traveling at or above 30 mph. NTSS staff then locate the registered owner of the vehicle and send a letter to them asking for their cooperation in reducing their speed. A partner to assist you with the data collection is recommended.

Radar Dolly

You can borrow and place a radar dolly on your street for up to two weeks. This unit gives motorists feedback on the speed at which they are driving, encouraging them to obey the speed limit. Request by calling (425) 452-6856 or sign up on www.bellevuewa.gov/radardolly.htm.

Police Enforcement

If you would like to request enforcement, please do so by calling (425) 577-5656.

Sign and Pledge Program

This program involves lending communities portable signs that encourage motorists to respect the neighborhood, drive responsibly, and drive 25 mph. The signs are moved by community volunteers from place to place throughout the neighborhood every few days. The second part of the program is a neighborhood pace car program. Residents who pledge to drive responsibly and drive the speed limit on all neighborhood streets receive magnetic bumper stickers or window clings to place on their vehicles. As these motorists drive 25 mph on residential streets, they set the pace for drivers behind them.



More information: Find out more about these recommendations in our *Residential Traffic Guidebook* or by logging on to **Streets are for Everyone (SAFE)**—Neighborhood Traffic Safety Services' blog.

Blog: <http://bellevuentss.wordpress.com>

Guidebook: http://www.bellevuewa.gov/pdf/Transportation/Guidebook_Web.pdf



Neighborhood Traffic Safety Services
www.bellevuewa.gov/traffic_services.htm
425-452-6856



TRAFFIC ACTION PLAN

BELLEVUE
NEIGHBORHOOD
TRAFFIC
SAFETY
SERVICES



2012-016 Highland Drive and SE 51st Street

January 9, 2013

Bellevue, WA 98006

Subject: Speeding and intersection safety along Highland Drive at SE 51st Street

Dear [REDACTED]

Thank you for contacting Neighborhood Traffic Safety Services and letting us know your concerns about speeding and pedestrian crossings on Highland Drive near SE 51st Street. We have completed our review and would like to share with you our findings and recommendations.

We have received similar concerns about vehicle speeds on this portion of Highland Drive in the past. The most recent occurred during fall 2011, when the Transportation Department painted a 4" white edge line on the west side of Highland Drive from SE 51st Street extending south along the curve toward SE 52nd Place. Shoulder striping helps to better delineate the roadway creating a narrowing effect. Narrower lanes have a tendency to reduce vehicle speeds. We did see a slight decrease as a result of this effort. More information on the traffic data collected as well as why speed humps are not recommended at this location are included in this report.

From the studies we conducted, the majority of motorists are driving appropriately for the typical conditions on Highland Drive. We realize however, that there are those motorists who are choosing to drive faster than the posted speed limit. To address this, the Police Department has conducted target enforcement in the neighborhood.

You also shared concern with the safety of pedestrians as they cross Highland Drive. We are presently reviewing the stretch of Highland Drive from Somerset Boulevard to Forest Drive to determine if a marked crosswalk is feasible and if so, the appropriate location for the installation. A number of factors are taken into consideration when considering marking crosswalks. By law, all intersections are considered crossing areas (unless restricted by signing), even without the added pavement marking. Highland Drive does have sidewalk on both sides separated from the street by a planter strip in most locations. Once we have completed our review, we will get back to you with our recommendation. As always, both pedestrians and motorists need to follow the basic traffic safety laws. We have some excellent pedestrian safety information we've developed for younger children and have included some of this for you to share with your children. Please feel free to let us know if you'd like additional copies to share with your neighbors.

While we determine whether a marked crosswalk is feasible, we encourage you and your neighbors to participate in our education programs, which are key in enhancing traffic safety in neighborhoods. Speeds often decrease when residents actively take-part in traffic education programs, such as the Neighborhood Speed Watch Program. By borrowing a hand-held radar unit and recording information about vehicles you observe driving faster than the speed limit, we will locate the registered owner of the vehicle and send a letter to them asking for their cooperation in reducing their speed.



Neighborhood Traffic Safety Services /// Transportation Department /// City of Bellevue
425-452-6856 www.bellevuewa.gov/traffic_services.htm

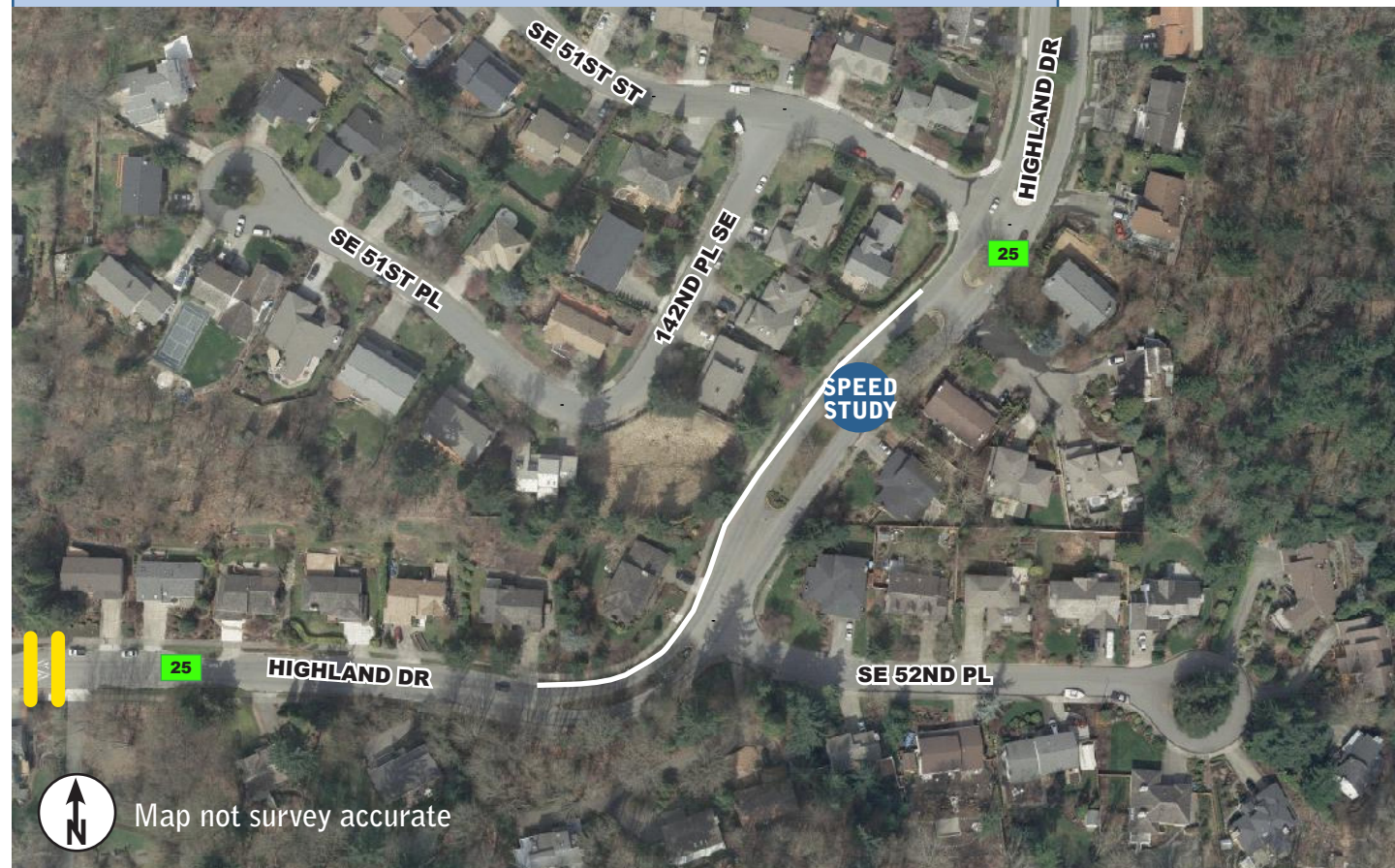


Again, thank you for sharing your concerns. We look forward to working with you on the education piece as well as following-up with your crosswalk requests. Please contact me at lglas@bellevuewa.gov or 425-452-2841 if you'd like to get started or if you have any questions about what is described in this Traffic Action Plan.

Sincerely,

Linda Glas, P.E.
Neighborhood Traffic Safety Services
Transportation Department

Existing Conditions



Legend



Speed study location

25

25 mph pavement marking



Speed hump



Fogline

Summary of Findings

With regards to speeding along Highland Drive, we have the following findings supported by the data found on the bottom of this page.



Speeding

The posted speed limit on Highland Drive is 25 mph, with average speeds of 25-26 mph recorded during our speed studies.

Based on our field reviews and the data collected, the use of physical measures, such as speed humps are not recommended. In general, physical measures are triggered when 15% of motorists are exceeding the posted speed limit by 10 mph. The results from these studies indicate that this location does not meet this guideline.

These guidelines were established to limit the use of physical measures to locations where speeds are higher and also limit the impact to emergency response. As an example, the use of speed humps reduces emergency response between 5-10 seconds per hump.

As mentioned, a white edge line was painted in 2011 to help narrow the roadway. A narrower roadway encourages motorists to reduce their vehicle speeds.



Pedestrian Safety

We are currently reviewing Highland Drive from Somerset Boulevard to Forest Drive to determine if a marked crosswalk is feasible and if so, the appropriate location for the installation. In addition, we have pedestrian education materials for children that we have developed and have included a packet for you to share with your children. As always, following traffic safety laws prescribed by the Revised Code of Washington (RCW) are important, such as not running into traffic so that a driver cannot stop (RCW 46.61.235). For more pedestrian laws, see <http://www.wsdot.wa.gov/walk/Laws.htm>.



Looking south on Highland Drive at SE 51st Street

Speed and volume results

Turn over for recommendations on what you can do



Date	Street	Average Daily Traffic	Average Speeds		85% Speeds ^A	
			Northbound	Southbound	Northbound	Southbound
12/4/2012	Highland Drive between SE 51 st St and SE 52 nd Pl	2422	25	26	29	29
7/13/2010	Highland Drive between SE 51 st St and SE 52 nd Pl	2466	27	26	30	30

^A85% of vehicles traveling at or below this speed