

### My Action Plan for SE 38th St (154th Ave SE to 155th Ave SE)

Are you feeling inspired to take action to address the traffic concerns on SE 38th St (154th Ave SE to 155th Ave SE)? Here is a checklist to help you get started:

- Talk to my neighbors and share the City’s findings and recommendations
- List interested neighbors who want to help me with efforts:
  - \_\_\_\_\_
  - \_\_\_\_\_
  - \_\_\_\_\_
- Decide the educational programs we want to participate in:
  - Neighborhood Speed Watch
  - Radar Dolly
  - Sign and Pledge Program
- Contact City staff to set-up a training session and get materials

Notes:

---



---



---



---



---



---



---



---

### More info

Find out more about these recommendations in our **Residential Traffic Guidebook** or by logging on to **Streets are for Everyone (SAFE)**—Neighborhood Traffic Safety Services’ blog.

- Blog: <http://bellevuentss.wordpress.com>
- Guidebook: [http://www.bellevuewa.gov/pdf/Transportation/Guidebook\\_Web.pdf](http://www.bellevuewa.gov/pdf/Transportation/Guidebook_Web.pdf)



# TRAFFIC ACTION PLAN



## 2012-014 SE 38th St (154th Ave SE to 155th Ave SE)

June 18, 2013

[Redacted]

Bellevue, WA 98006

Subject: Speeding Concerns on SE 38th St (154th Ave SE to 155th Ave SE)

Dear [Redacted]

Thank you for contacting Neighborhood Traffic Safety Services and letting us know your concerns with vehicle speeds on SE 38th St between 154th Ave SE and 155th Ave SE. We have completed a field review and data analysis and compiled this information into the enclosed Traffic Action Plan (TAP), as well as our recommendations. We apologize for the delay.

Speed studies were conducted on SE 38th St west of 155th Ave SE. From the speed studies conducted in October 2012, 85% of motorists were traveling 29-30 mph on SE 38th St. Also, the average speed on SE 38th St was 24 mph. Vehicle speeds along SE 38th St are typical for 25 mph neighborhood streets in Bellevue and indicate that the majority of motorists are driving this roadway appropriately for conditions.

In order to heighten motorists’ attention to the speed limit, we will be installing a 25 MPH pavement marking on SE 38th St for the eastbound direction approaching 154th Ave SE. In addition, we will install a “Residential Area” sign (see picture on page 2) on SE 38th St west of 154th Ave SE to note that one is entering a residential area. This blue and black sign is designed to promote a sense of community by showing pictures of homes, bicycles, pedestrians, and vehicles. It has a supplemental plaque that states “Residential Area.”

As you are well aware, the Eastgate area was annexed to the City of Bellevue last year. Our Street Maintenance division is busy making improvements and upgrades to physical measures such as signs and channelization. There are two medians located at the east leg and south leg of the SE 38th St/154th Ave SE intersection. The pavement markings surrounding the medians will be upgraded, and the median curb will be repainted. In addition, the medians will be replanted by our Parks department. Sight lines will be addressed at the SE 38th St/154th Ave SE intersection to improve the visibility here.

We encourage you and your neighbors to participate in one of our traffic education programs. To address your concerns with speeding, the City of Bellevue has a radar dolly that you can borrow. The radar dolly displays the speed of motorists, encouraging them to reduce their speed. The radar dolly has been effective in decreasing vehicle speeds in many areas of Bellevue. I encourage you to fill out the radar dolly request form. Once we receive this form from you, City staff will contact you to make arrangements for both the drop-off and pick-up of the radar dolly.

We appreciate your concerns and look forward to working with you. Please feel free to contact me at [lglas@bellevuewa.gov](mailto:lglas@bellevuewa.gov) or 425-452-2841 to participate in any of the education programs described in this TAP. For questions pertaining to the channelization improvements, please contact Darek Jarzynski at [djarzynski@bellevuewa.gov](mailto:djarzynski@bellevuewa.gov) or 425-452-4277.

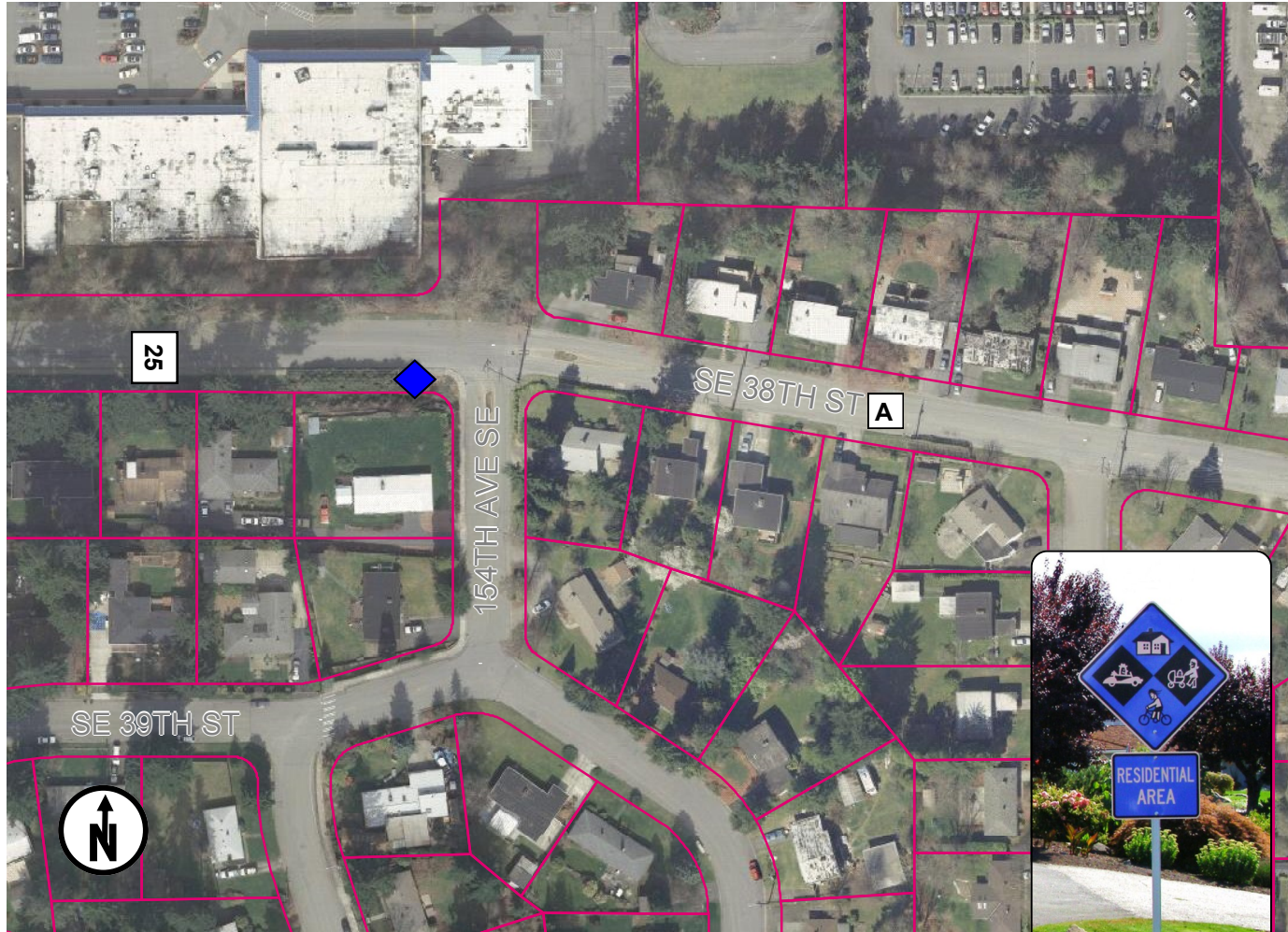
Sincerely,

*Linda Glas*  
Linda Glas, P.E.

Neighborhood Traffic Safety Services  
Transportation Department







**Legend**

- Future "Residential Area" sign
- Future 25 MPH pavement marking

Summary of Findings

Date of Study	Location of Study	Average Daily Traffic	Average Speeds		85th% Speeds*	
			Eastbound	Westbound	Eastbound	Westbound
October 2012	<b>A</b> SE 38th St west of 155th Ave SE	794	24	24	29	30

\*85% of vehicles traveling at or below this speed



Customized Traffic Action Plan for SE 38th St (154th Ave SE to 155th)

Education, Encouragement, and Enforcement

By educating the community and encouraging safe driving, we can begin to change driver behavior and reduce vehicle speeds.

- Educate the Community
- Enhance Neighborhood Identity
- Reduce Excessive Vehicle Speeds

Neighborhood Speed Watch

Using a borrowed radar unit, you record information about vehicles you observe traveling at or above 30 mph. NTSS staff then locate the registered owners of the vehicles and send a letter to them asking for their cooperation in reducing their speed. A partner to assist you with the data collection is recommended.

Radar Dolly

You can borrow and place a radar dolly on your street for up to two weeks. This unit gives motorists feedback on the speed at which they are driving, encouraging them to obey the speed limit. Should you like to borrow the radar dolly, please request it by calling (425) 452-6457 or sign up on [www.bellevuewa.gov/radardolly.htm](http://www.bellevuewa.gov/radardolly.htm).

Sign and Pledge Program

This program involves lending communities portable signs that encourage motorists to respect the neighborhood, drive responsibly, and drive 25 mph. The signs are moved by community volunteers from place to place throughout the neighborhood every few days. The second part of the program is a neighborhood pace car program. Residents who pledge to drive responsibly and drive the speed limit on all neighborhood streets receive magnetic bumper stickers or window clings to place on their vehicles. As these motorists drive 25 mph on residential streets, they set the pace for drivers behind them.

