

Next Steps

Here are tools we recommend you and your neighbors take active participation in as they have shown to be effective at reminding drivers that they are in a residential area. These tools allow you to become an integral part in the traffic safety process.

Education, encouragement, and enforcement

Neighborhood Speed Watch

Using a borrowed radar unit, you record information about vehicles you observe traveling at or above 30 mph. NTSS staff then locate the registered owner of the vehicle and send a letter to them asking for their cooperation in reducing their speed. A partner to assist you with the data collection is recommended.

Radar Dolly

You can borrow and place a radar dolly on your street for up to two weeks. This unit gives motorists feedback on the speed at which they are driving, encouraging them to obey the speed limit.

Request by calling (425) 452-6856 or sign up on www.bellevuewa.gov/radardolly.htm.

Police Enforcement

If you would like to request enforcement, please do so by calling (425) 577-5656.

Sign and Pledge Program

This program involves lending communities portable signs that encourage motorists to respect the neighborhood, drive responsibly, and drive 25 mph. The signs are moved by community volunteers from place to place throughout the neighborhood every few days. The second part of the program is a neighborhood pace car program. Residents who pledge to drive responsibly and drive the speed limit on all neighborhood streets receive magnetic bumper stickers or window clings to place on their vehicles. As these motorists drive 25 mph on residential streets, they set the pace for drivers behind them.



TRAFFIC ACTION PLAN



2012-013 NE 1st Street and 154th Place NE

November 28, 2012

Bellevue, WA 98007

Subject: Speeding concerns at NE 1st Street and 154th Place NE

Dear [REDACTED]

Thank you for contacting Neighborhood Traffic Safety Services and letting us know your concerns on NE 1st Street. We have completed our field reviews and data analysis of the location and would like to share with you our findings and recommendations.

To help us understand traffic conditions on this roadway, a speed study was conducted during the fall of 2012. Average speeds along NE 1st Street were found to be quite low, even for residential streets in Bellevue. Average speeds were 19 mph westbound and 16 mph eastbound. The speed limit is 25 mph along this roadway.

You specifically requested speed humps along NE 1st Street. Physical measures, such as speed humps, are installed based on certain speed thresholds. The speeds collected on NE 1st Street are low, and thus speed humps will not be installed here.

In your request, you noted the number of children living along NE 1st Street and 154th Place NE, in addition to a high number of bicyclists in the area. We take children's safety very seriously and work with elementary schools to teach pedestrian and bicycling safety to younger students. We have designed a packet of information, inclusive of a CD and interactive video on traffic safety basics, which we've included for you to share with your children and your neighbors. This helps set the foundation for good behavior when around traffic. If you need additional packets, please let us know.

We encourage you and your neighbors to participate in one of our traffic education programs. Speeds often decrease when residents actively participate in traffic education programs, such as through the Neighborhood Speed Watch Program. You can address periodic speeders by borrowing a radar unit and recording information about vehicles you observe traveling above 30 mph. From this information, we will locate the registered owner of the vehicle and send a letter to them asking for their cooperation in reducing their speed.

We appreciate your concerns and look forward to working with you. Please feel free to contact me at lglas@bellevuewa.gov or 425-452-2841 to participate in any of the education programs described in this Traffic Action Plan.

Sincerely,

Linda Glas, P.E.
Neighborhood Traffic Safety Services
Transportation Department

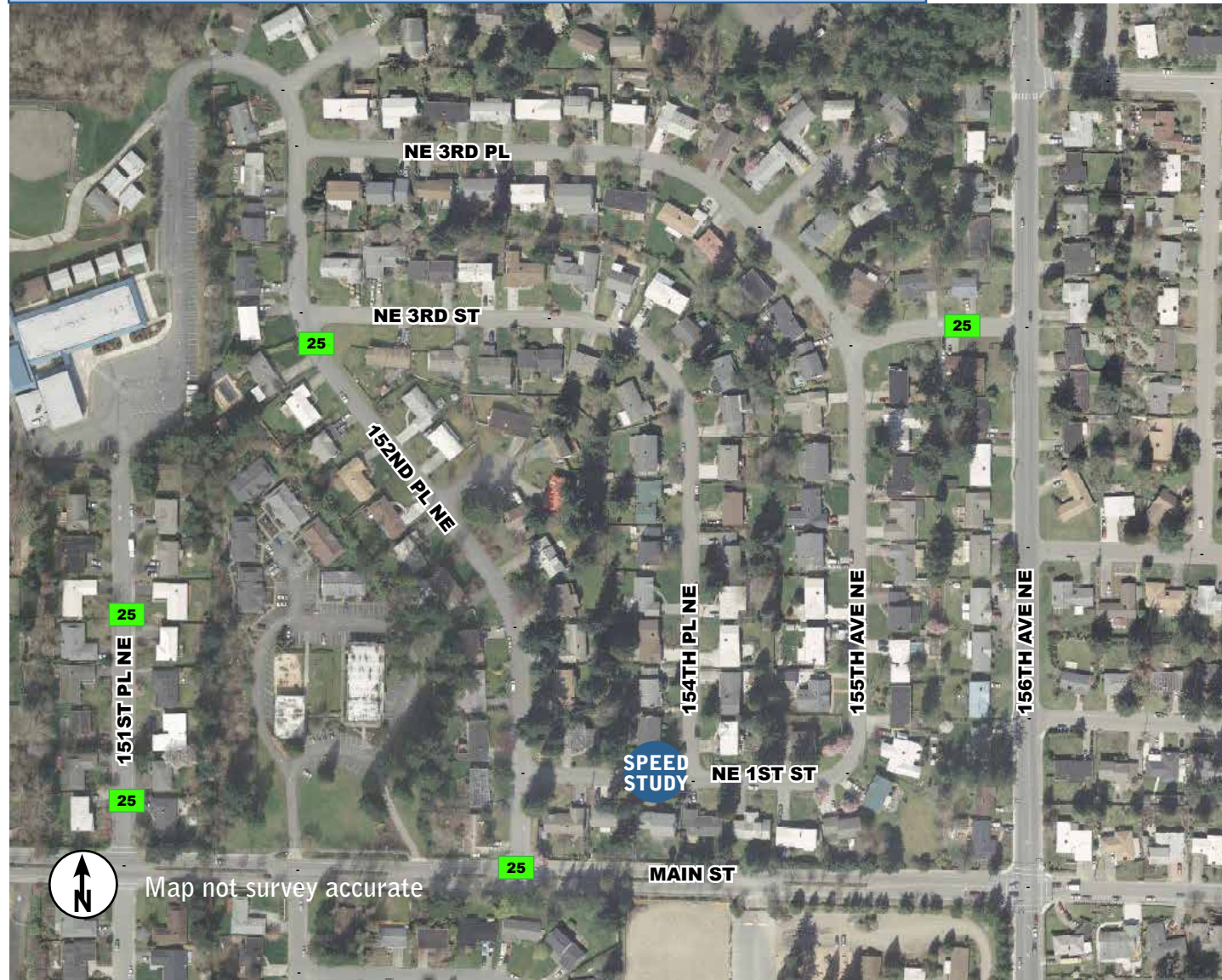
More information: Find out more about these recommendations in our **Residential Traffic Guidebook** or by logging on to **Streets are for Everyone (SAFE)**—Neighborhood Traffic Safety Services' blog.

Blog: <http://bellevuentss.wordpress.com>

Guidebook: http://www.bellevuewa.gov/pdf/Transportation/Guidebook_Web.pdf



Existing Conditions



Legend



Speed study location

25

25 mph pavement marking

Summary of Findings

Your primary concern was focused on speeding along NE 1st Street. The findings below are supported by the data found on the bottom of this page.



Speeding

Below are the speeding results conducted on NE 1st Street near 154th Place NE. As you can see, the speeds and volumes are quite low, even for residential streets in Bellevue. Often times, motorists' speeds are perceived to be higher than they truly are. In this case, where there is parking on both sides of NE 1st Street, passing vehicles might appear to be much faster than they are actually going.

Heading eastbound on NE 1st Street toward 154th Place NE—going down the hill—speeds are actually lower than the westbound direction—going up the hill. This indicates that motorists may be slowing their speeds through the NE 1st Street/154th Place NE intersection.

You requested that speed humps be installed along NE 1st Street. Based on our field reviews and the data collected, the use of physical measures, such as speed humps are not recommended. In general, physical measures are triggered when 15% of motorists are exceeding the posted speed limit by 10 mph. The results from these studies indicate that none of the locations meets this guideline.

These guidelines were established to limit the use of physical measures to locations where speeds are higher and also limit the impact to emergency response. As an example, the use of speed humps reduces emergency response between 5-10 seconds per hump.



NE 1st Street at 154th Place NE looking east toward the curve at 155th Avenue NE

Turn over for recommendations on what you can do



Speed and volume results

Date	Street	Average Daily Traffic	Average Speeds		85% Speeds*	
			Westbound	Eastbound	Westbound	Westbound
11/6-11/7 2012 (48-hour study)	NE 1st St near 154th Pl NE	305	19	16	25	23

*85% of vehicles traveling at or below this speed

