

Next Steps

Here are tools we recommend you and your neighbors take active participation in as they have shown to be effective at reminding drivers that they are in a residential area. These tools allow you to become an integral part in the traffic safety process. You can also partner with nearby schools to encourage and educate school children and their parents about pedestrian and traffic safety.

Education, encouragement, and enforcement

Neighborhood Speed Watch

Using a borrowed radar unit, you record information about vehicles you observe traveling at or above 30 mph. NTSS staff then locate the registered owner of the vehicle and send a letter to them asking for their cooperation in reducing their speed. A partner to assist you with the data collection is recommended.

Radar Dolly

You can borrow and place a radar dolly on your street for up to two weeks. This unit gives motorists feedback on the speed at which they are driving, encouraging them to obey the speed limit. Request by calling (425) 452-6856 or sign up on www.bellevuewa.gov/radardolly.htm.

Police Enforcement

If you would like to request enforcement, please do so by calling (425) 577-5656.

Sign and Pledge Program

This program involves lending communities portable signs that encourage motorists to respect the neighborhood, drive responsibly, and drive 25 mph. The signs are moved by community volunteers from place to place throughout the neighborhood every few days. The second part of the program is a neighborhood pace car program. Residents who pledge to drive responsibly and drive the speed limit on all neighborhood streets receive magnetic bumper stickers or window clings to place on their vehicles. As these motorists drive 25 mph on residential streets, they set the pace for drivers behind them.



Schools

Though Chinook Middle School will not be occupied during the 2012-2013 school year, there are opportunities to partner with Clyde Hill Elementary School to implement educational efforts targeted at schoolchildren.

Pedbee Education Program

The Pedbee Education Program teaches children about pedestrian and traffic safety. The Pedbee mascot visits schools, leads pedestrian safety activities such as how to properly cross a street, and hands out fun, educational workbooks.

Trips to School

The Trips to School program encourages elementary school students to walk, bike, carpool, and ride the bus to and from school. City staff coordinate with participating schools to develop a customized plan to enhance traffic safety for their school which can include informational campaigns, walking school buses, incentive-based programs, carpool coordination efforts, assemblies, and grant opportunities.



More information: Find out more about these recommendations in our **Residential Traffic Guidebook** or by logging on to **Streets are for Everyone (SAFE)**—Neighborhood Traffic Safety Services' blog.

Blog: <http://bellevuentss.wordpress.com>

Guidebook: http://www.bellevuewa.gov/pdf/Transportation/Guidebook_Web.pdf



Neighborhood Traffic Safety Services
www.bellevuewa.gov/traffic_services.htm
425-452-6856



TRAFFIC ACTION PLAN

BELLEVUE
NEIGHBORHOOD
TRAFFIC
SAFETY
SERVICES



2012-004 NE 20th/21st Pl & NE 21st St between 98th Ave NE & Bellevue Way

September 10, 2012

Bellevue, WA 98004

Subject: Cut-through traffic, NE 20th/21st Pl and NE 21st St between 98th Ave NE and Bellevue Way

Dear [REDACTED]

Thank you for contacting Neighborhood Traffic Safety Services and letting us know your concerns on NE 20th/21st Pl and NE 21st St from 98th Ave NE to Bellevue Way NE. Several of your neighbors have also expressed concern about cut-through traffic (specifically related to school times), speeding, and the crosswalk at NE 21st St and 100th Ave NE.

Over the past 20 years, we have installed a number of traffic safety improvements on these streets including "Local Traffic Only" signs to reduce non-local traffic, 25 MPH pavement markings and signs to encourage motorists drive at or near the posted speed limit and yellow centerline reflectors in the curves near 102nd Avenue NE to better define travel lanes.

From you and your neighbors recent inquiries, we again conducted field review and collected speed and volume data. We have now completed our review and would like to share our findings (page 2 and 3) and recommendations (page 4) for further action.

Based on our field reviews and data results, the traffic safety improvements installed over the years have addressed the majority of concerns raised by you and your neighbors. Drivers are traveling appropriately for the posted speed limit and volumes are well within an accepted level for the number of homes in this community. At this time, we do not recommend any other physical measures.

We are continuing our review the crosswalk on 100th Avenue NE at NE 21st Street to determine if any additional measure is needed at this location. School has just begun and we will be watching traffic at this location. Traffic patterns in the area will not be typical, as Chinook Middle School is being renovated during the 2012-2013 school year so there will be less traffic and pedestrian crossings. We will share with you our findings.

Even though we are not recommending physical measures at this time, we encourage you and your neighbors to take advantage of our neighborhood speed watch program or borrow a radar dolly to help educate motorists who are still choosing to drive faster than the posted speed limit. We also have a "Trips to School" program that you may wish to work with the local schools in implementing. All these recommendations are detailed on the back page.

We appreciate your concerns and look forward to working with you. Please feel free to contact me at lglas@bellevuewa.gov or 425-452-2841 to participate in any of the programs described in this Traffic Action Plan.

Sincerely,

Linda Glas, P.E.
Neighborhood Traffic Safety Services
Transportation Department



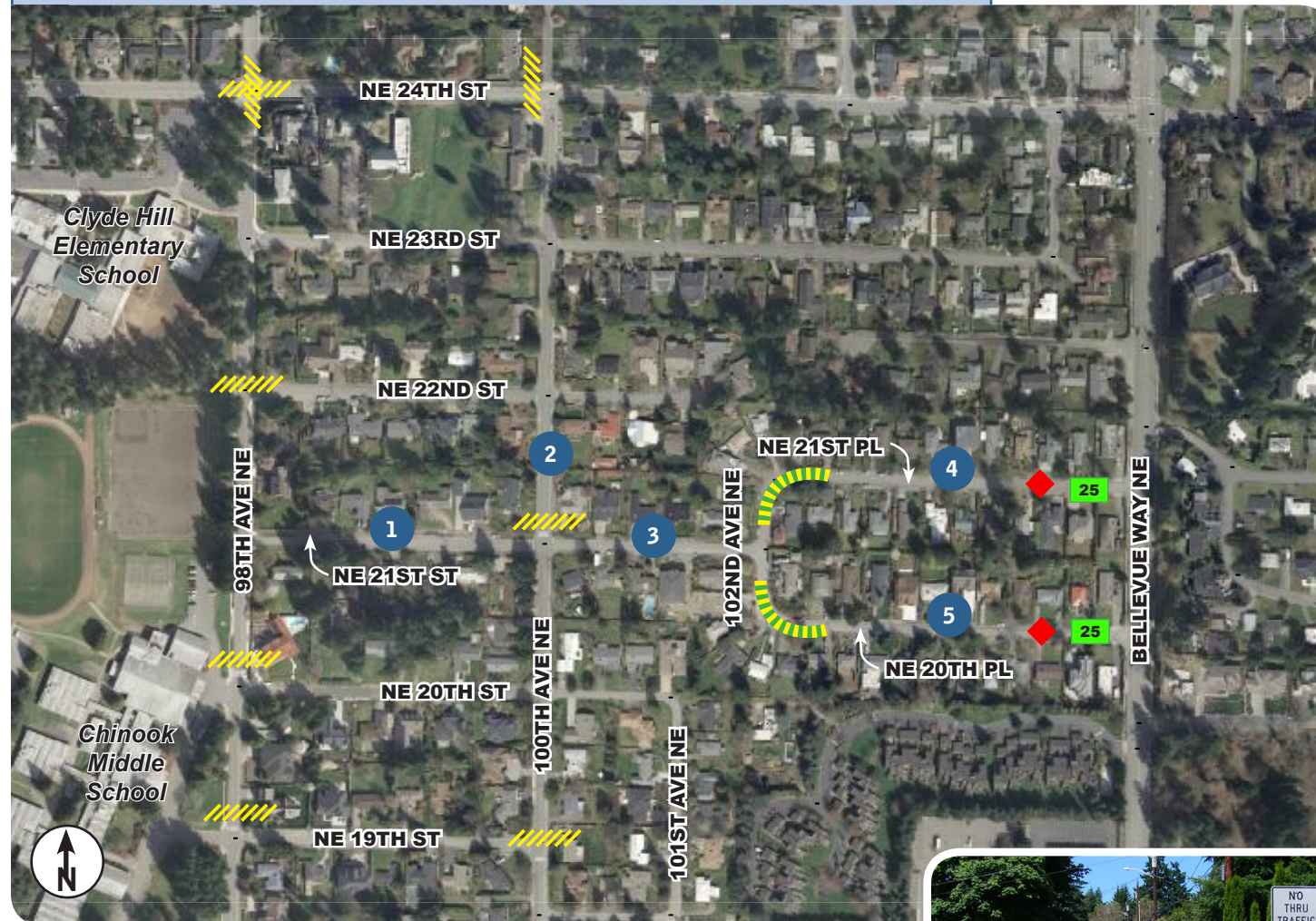
100th Ave NE crosswalk at NE 21st St Source: Google



Neighborhood Traffic Safety Services /// Transportation Department /// City of Bellevue
425-452-6856 www.bellevuewa.gov/traffic_services.htm



Existing Conditions



Legend

- Crosswalk
- "No Thru Traffic" sign
- Speed/volume study location
- 25 mph pavement marking
- Road reflectors in curve
-
-



The entrances to NE 21st Pl and NE 20th Pl have 25 mph pavement markings, "No Thru Traffic" signs, and 25 mph speed limit signs.

Summary of Findings

Three primary concerns have been raised by you and your neighbors: speeding, cut-through traffic, and pedestrian safety at 100th Avenue NE and NE 21st Street. The findings below are supported by the data found on the bottom of this page.



Speeding

Based on our field reviews and the data collected, the use of physical measures, such as speed humps are not recommended. In general, physical measures are triggered when 15% of motorists are exceeding the posted speed limit by 10 mph. The results from these studies indicate that none of the locations meet this guideline.

These guidelines were established to limit the use of physical measures to locations where speeds are higher and also limit the impact to emergency response. As an example, the use of speed humps reduces emergency response between 9-10 seconds per hump.



Cut-Through Traffic

Cut-through traffic is defined as traffic that does not have an origin or destination in a neighborhood. The use of NE 20th and NE 21st Place between Bellevue Way and 98th Avenue NE by school traffic is considered local. Non-local traffic would be defined as those motorists using NE 20th and NE 21st to bypass the signal at NE 24th Street and Bellevue Way NE.

Based on the traffic volumes (which were taken when school was not in session), they are typical for the number of households in the area. Although there may be some drivers choosing to use this route, the use of measures, other than the current signing, is not recommended.



School crosswalk on 100th Ave NE at NE 21st St

Concerns have been raised over children's safety when crossing 100th Ave NE at NE 21st St. This crosswalk is used by students attending Clyde Hill Elementary and Chinook Middle School on 98th Avenue NE. Since 1997, there have been no reported pedestrian accidents, but several motor-vehicle collisions have occurred. Although the signing and pavement markings meet the City's standards for a school crossing, now that school has started we will review school pedestrian traffic at this location. As noted, Chinook Middle School is presently under construction and so the volume of traffic and pedestrians may be a lot less for the 2012-2013 school year. We will also be sending your request to Police Traffic for enforcement during the school start and dismissal times.

Speed and volume results

Turn over for recommendations on what you can do



Location #	Date	Street	Average Daily Traffic	Average Speeds		85% Speeds ^B	
				Eastbound	Westbound	Eastbound	Westbound
1	7/10/12-7/12/12	NE 21st St between 98th Ave NE and 100th Ave NE ^A	147	22	23	28	31
2	7/10/12-7/12/12	100th Ave NE between NE 21st St and NE 22nd St ^A	2993	28 ^C	27 ^D	33 ^C	32 ^D
3	7/10/12-7/12/12	NE 21st St between 100th Ave NE and 102nd Ave NE ^A	234	17	18	23	24
4	7/24/12-7/25/12	NE 21st Pl between 102nd Ave NE and Bellevue Way ^E	144	19	19	27	26
5	7/10/12-7/11/12	NE 20th Pl between 102nd Ave NE and Bellevue Way ^E	219	21	20	29	28

^A 72-hour study ^B 85% of vehicles traveling at or below this speed ^C Northbound ^D Southbound ^E 48-hour study