

# TRAFFIC ACTION PLAN



**BELLEVUE  
NEIGHBORHOOD  
TRAFFIC  
SAFETY  
SERVICES**

## 2012-003 NE 37th Pl east of 170th Ave NE

---

July 13, 2012



Bellevue, WA 98008

Subject: Speeding Concerns on NE 37th Pl

Dear 

Thank you for contacting Neighborhood Traffic Safety Services and letting us know your concerns on NE 37th Place. We have completed our field reviews and data analysis of the location and would like to share with you our findings and recommendations.

To help us understand traffic conditions on this roadway, a speed study was conducted on May 16, 2012 on NE 37th Place east of 170th Ave NE. During this 24-hour study, a total of 226 vehicles were recorded showing average speeds of 16-17 mph, with 85% of drivers traveling at or below 22-24 mph along this 25 mph neighborhood street. The fastest speed recorded during this 24-hour study was 30 mph.

With the economic downturn, many City programs saw significant funding reductions, including Neighborhood Traffic Safety Services. Because staffing and funding have been reduced, we are requesting the assistance of residents more than ever in our efforts to improve traffic safety. Speeds often decrease when residents actively participate in traffic education programs, such as through the Neighborhood Speed Watch Program. You can address periodic speeds by borrowing a radar unit and recording information about vehicles you observe traveling above 30 mph. From this information, we will locate the registered owner of the vehicle and send a letter to them asking for their cooperation in reducing their speed. We also have a portable radar sign on a dolly that residents can borrow and place on their street for up to two weeks. This sign digitally displays to motorists the speed they are driving, encouraging them to obey the speed limit, in this case 25 mph.

You also expressed a concern with vehicles parked over the curb and on the sidewalk. Parking partially or fully on the sidewalk is not only a hazard for pedestrians, it is also illegal and can result in a fine. Please contact the Police at 425-577-5656 to report vehicles blocking the sidewalk. Also, if you have a homeowners association, this would be a timely newsletter topic for the HOA to remind residents to not block sidewalks.



Neighborhood Traffic Safety Services /// Transportation Department /// City of Bellevue

425-452-6856 [www.bellevuewa.gov/traffic\\_services.htm](http://www.bellevuewa.gov/traffic_services.htm)



We appreciate your concerns and look forward to working with you. Please feel free to contact me at [lglas@bellevuewa.gov](mailto:lglas@bellevuewa.gov) or 425-452-2841 to participate in any of the education programs described in this Traffic Action Plan.

Sincerely,

Linda Glas, P.E.  
Neighborhood Traffic Safety Services  
Transportation Department

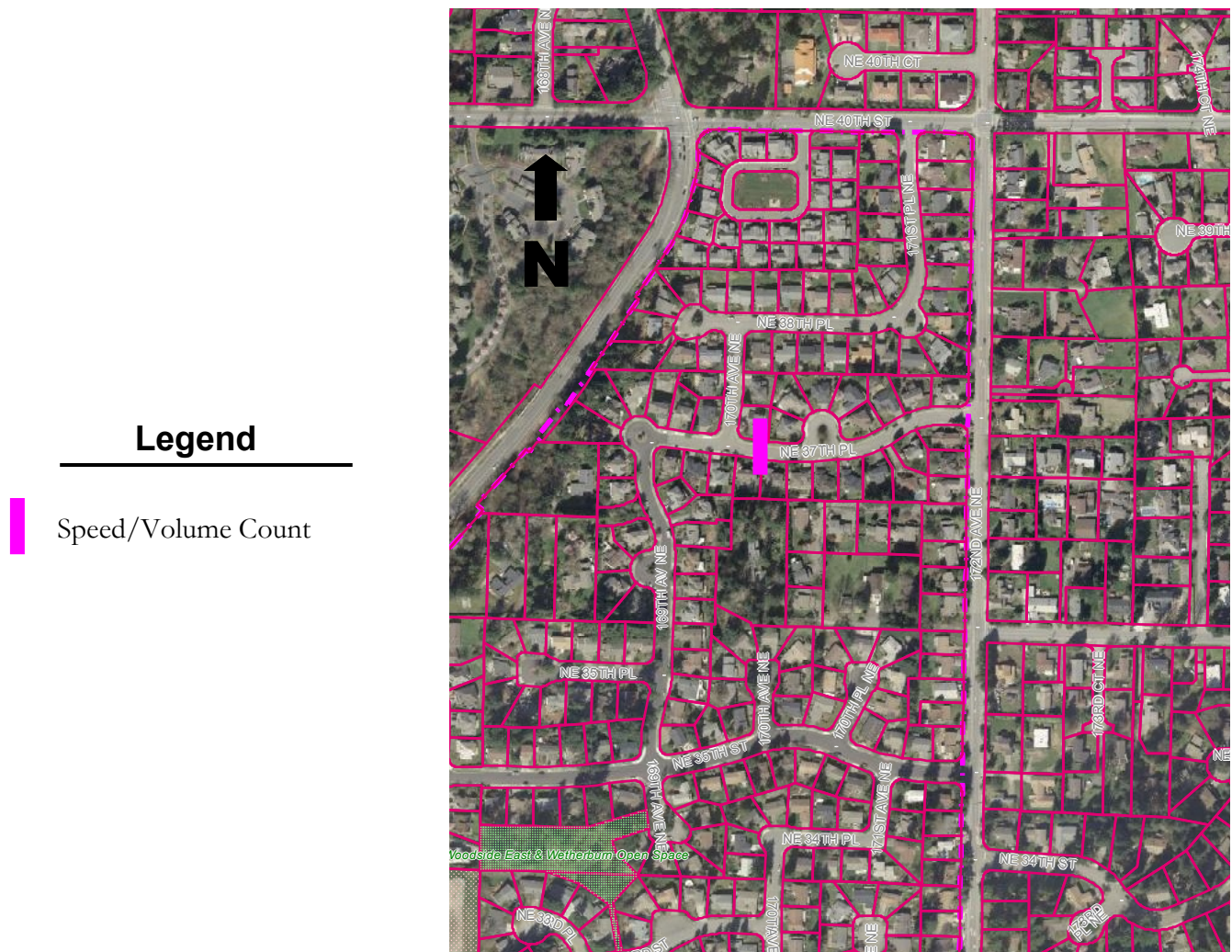
## Images from NE 37th St



Looking east on NE 37th St



Looking west on NE 37th St



## Traffic Conditions in the Area

	Location	Year of Study	Vehicles Recorded	Average Speed		85% Speeds*	
				East-bound	West-bound	East-bound	West-bound
	17005 NE 37th Place	2012	226	16	17	22	24

\*85% of vehicles traveling at or below this speed



## Recommendations for Citizen Participation

### Neighborhood Speed Watch

One of the ways you can help to address periodic speeders is by borrowing a radar unit and participating in our Neighborhood Speed Watch Program. Using the radar unit, you can record information about vehicles you observe **traveling at or above 30 mph**. From this information, we will locate the registered owner of the vehicle and send a letter to them asking for their cooperation in reducing their speed. A partner to assist you with the data collection is recommended.



### Radar Dolly

You can borrow and place a radar dolly on your street for up to two weeks. This unit gives motorists feedback on the speed at which they are driving, encouraging them to obey the speed limit. Please let me know if you are interested in using this radar unit or call (425) 452-6856 or sign up on [www.bellevuewa.gov/radardolly.htm](http://www.bellevuewa.gov/radardolly.htm).



### Police Enforcement

Enforcement is a tool that encourages motorists to change their driving behavior through the issuance of citations. If you would like to request additional enforcement in the future, please do so by calling (425) 577-5656.

