

Recommendation for Citizen Participation

Neighborhood Speed Watch

One of the ways you can help to address periodic speeders is by borrowing a radar unit and participating in our Neighborhood Speed Watch Program. Using the radar unit, you can record information about vehicles you observe **traveling at or above 30 mph**. From this information, we will locate the registered owner of the vehicle and send a letter to them asking for their cooperation in reducing their speed. A partner to assist you with the data collection is recommended.



Radar Dolly

You can borrow and place a radar dolly on your street for up to two weeks. This unit gives motorists feedback on the speed at which they are driving, encouraging them to obey the speed limit. Please let me know if you are interested in using this radar unit or call (425) 452-6856 or sign up on www.bellevuewa.gov/radardolly.htm.



Police Enforcement

Enforcement is a tool that encourages motorists to change their driving behavior through the issuance of citations. If you would like to request additional enforcement in the future please do so by calling (425) 577-5656.



TRAFFIC ACTION PLAN



BELLEVUE NEIGHBORHOOD TRAFFIC SAFETY SERVICES

2011-014 99th Ave NE south of NE 5th Street

February 29, 2012

[Redacted address]

Bellevue, WA 98004

Subject: Speeding Concerns on 99th Ave NE

Dear [Redacted name]

Thank you for contacting Neighborhood Traffic Safety Services and letting us know your concerns about speeding on 99th Ave NE near your home. We have completed our field reviews and data analysis of the location and would like to share with you our findings in this Traffic Action Plan.

Speed studies have been collected over the years on 99th Ave NE between NE 5th and 4th Streets. These speed studies have recorded the average speed of motorists as 23 mph, with 85% of drivers traveling at or below 27 mph along this 25 mph neighborhood street. Additional speed studies were conducted on 99th Ave NE between NE 5th and NE 8th Streets. These studies revealed average speeds of 25-26 mph with 85% of vehicles traveling below 31 mph.

We have received several requests over the years regarding speeding concerns in your neighborhood. Residents have requested speed humps to be installed and restrictions be placed on parking along 99th Ave NE. Speed humps were not installed due to potential impacts to emergency response vehicles—speed humps can slow emergency vehicles 1-9 seconds per hump—and because vehicles did not exhibit severe speeds that warrant the construction of humps. Parking restrictions were requested on the west side of 99th Ave NE. A ballot was sent out to neighborhood residents to gauge support for a parking amendment but garnered approval below the 70% required to implement such a restriction. Generally, parking helps to narrow the road thereby encouraging vehicles to travel slower than on a wider roadway.

You requested that the city install a stationary radar sign between NE 5th and 4th Streets on 99th Ave NE. Per our guidelines, stationary radar signs are limited to streets where speeds exceed the posted speed limit by 10 mph. Locations are prioritized and signs are installed as funding allows. According to speed studies on 99th Ave NE, this street does not meet the minimum guidelines for a stationary radar sign.

With the economic downturn, many City programs saw significant reductions, including the Neighborhood Traffic Safety Services. Because staffing and funding have been reduced, we are requesting the assistance of



residents to actively participate in traffic education programs, such as through the Neighborhood Speed Watch Program. This program allows you to borrow a portable radar unit and record information about vehicles you observe traveling at or above 30 mph. From this information, we will locate the registered owner of the vehicle and send a letter to them asking for their cooperation in reducing their speed. You noted an interest in borrowing a radar unit. Please feel free to contact me and we can get you started.

Additionally, you may borrow a portable radar dolly for a period of two weeks. If you continue to be concerned with speeds on your street, we encourage you and your neighbors to work with us in educating the public about traffic safety through one of our education programs. If you would like to contact our Police Department and request enforcement, please do so by calling 425-577-5656.

We appreciate your concerns and look forward to working with you through our education programs. Please feel free to contact me at lglas@bellevuewa.gov or 425-452-2841, to participate.

Sincerely,

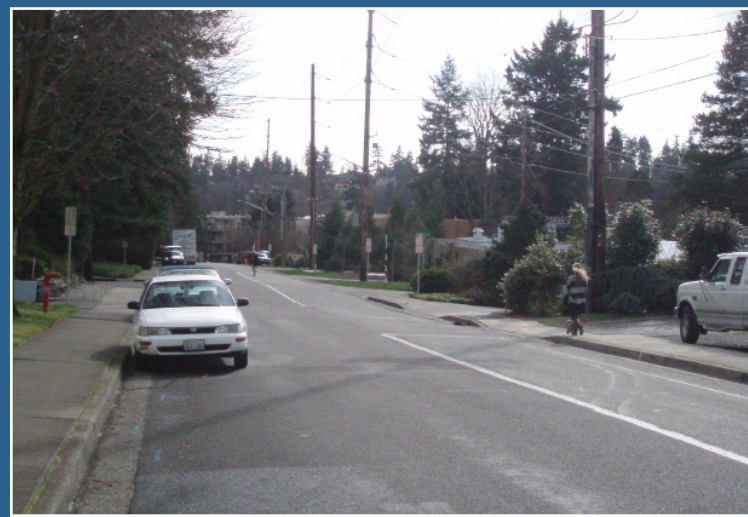
Linda Glas

Linda Glas
Neighborhood Traffic Safety Services
Transportation Department

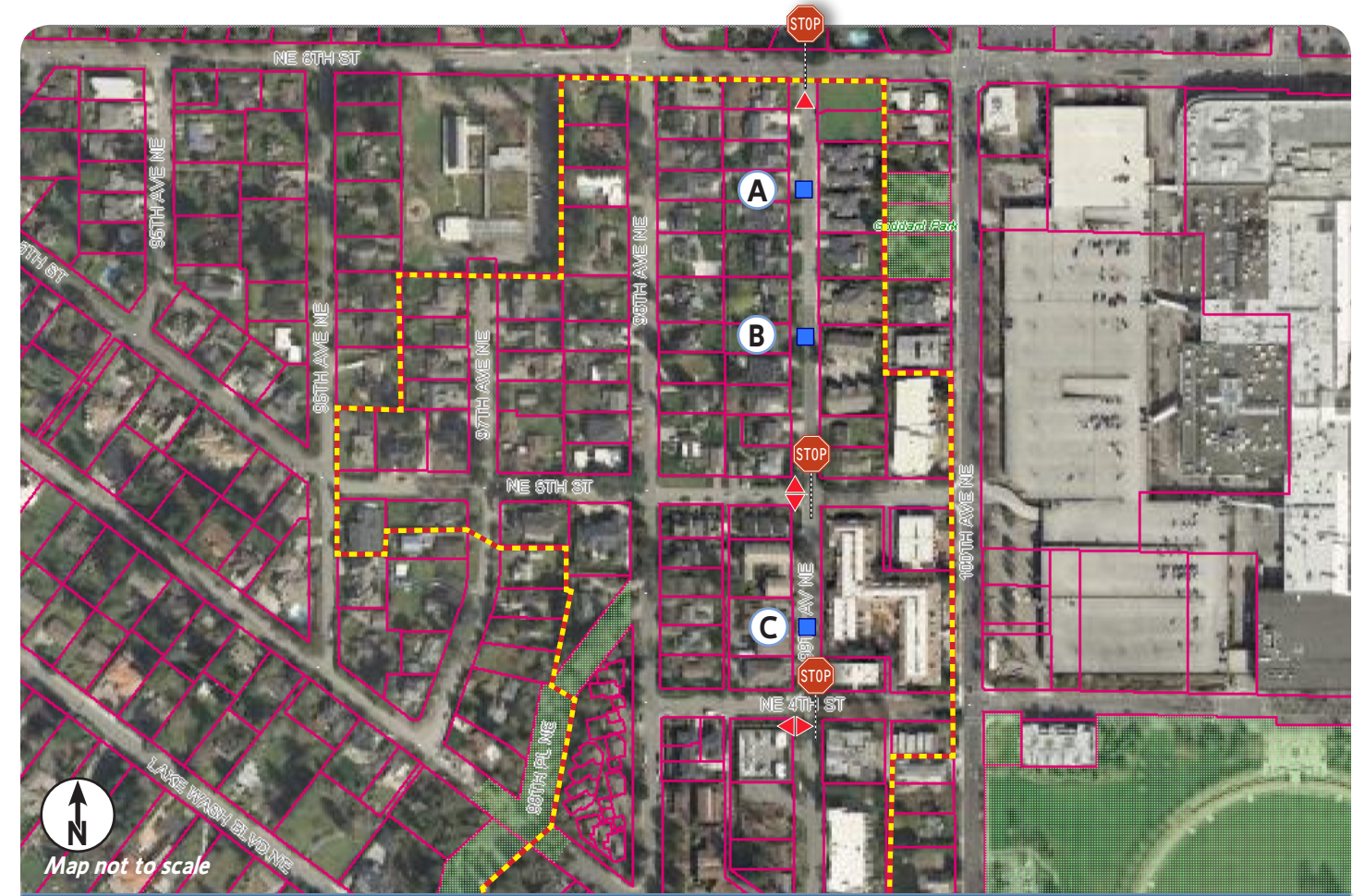
Images from 99th Ave NE



The area of concern is located in a Residential Parking Zone that allows for parking by permit holders only.



Minimal traffic was observed traveling north or south on 99th Ave NE. The majority of vehicles observed were traveling at or below the posted speed limit.



TRAFFIC CONDITIONS IN THE AREA

= stop sign location and position
 = Residential Permit Parking Zone 9 boundary
 = location of speed study

Data Collection: Speed Studies

Position	Location	Year of Study	Vehicles Recorded	Average Speed		85% Speed*	
				Northbound	Southbound	Northbound	Southbound
A	99 th Ave NE south of NE 8 th St.	1998	905**	25	25	30	30
B	99 th Ave NE north of NE 5 th St.	2000	1815***	26	25	31	30
C	99 th Ave NE north of NE 4 th St.	2005	1347**	23	22	27	27

*85% of vehicles traveling at or below this speed ** 24-hour speed study *** 72-hour speed study