

Recommendation for Citizen Participation

Neighborhood Speed Watch

The speed watch tool equips residents with the materials and knowledge to record vehicle speeds in their neighborhood. One of the ways you can help to address periodic speeders is by borrowing a radar unit and participating in our Neighborhood Speed Watch Program. Using the radar unit, you can record information about vehicles you observe **traveling at or above 30 mph**. From this information, we will locate the registered owner of the vehicle and send a letter to them asking for their cooperation in reducing their speed. A partner to assist you with the data collection is recommended.



Radar Dolly

You can borrow and place a radar dolly on your street for up to two weeks. This unit gives motorists feedback on the speed at which they are driving, encouraging them to obey the speed limit. Please let me know if you are interested in using this radar unit or call (425) 452-6856 or sign up on www.bellevuewa.gov/radardolly.htm.



Police Enforcement

Enforcement is a tool that encourages motorists to change their driving behavior through the issuance of citations. If you would like to request additional enforcement in the future please do so by calling (425) 577-5656.



TRAFFIC ACTION PLAN



BELLEVUE NEIGHBORHOOD TRAFFIC SAFETY SERVICES

2011-013 111th Ave SE and SE 2nd St

February 29, 2012

Bellevue, WA 98004

Subject: Speeding and Cut-through Traffic in the Surrey Downs Neighborhood

Dear [REDACTED]

Thank you for contacting Neighborhood Traffic Safety Services and letting us know your traffic concerns at two locations in the Surrey Downs Neighborhood—111th Ave SE and SE 2nd Street and 110th Avenue SE and SE 2nd Street. We have completed our field reviews and data analysis of these locations and would like to share with you our findings and recommendations.

Over the past 25 years, Transportation staff have worked with the Surrey Downs Community Club and residents implementing traffic calming improvements to address cut-through traffic and speeding in the Surrey Downs neighborhood. This included education efforts, enforcement, and installation of physical measures such as entry medians, speed limit signing, 25 MPH pavement markings, and a Residential Permit Parking Zone to address spillover parking from the downtown. These efforts have helped address the above mentioned concerns.

As part of these reviews a number of traffic studies were conducted, including volume counts at all 5 entrances into the neighborhood. This was last done in 2000. The results of this study are shown in more detail on the map in this report. At that time, several options were offered to the neighborhood, including either a full or partial closure of 110th Avenue SE south of Main Street. This proposal did not gather enough support from the board to move forward to a public vote of the community. These treatments introduced to reduce cut-thru traffic impact the entire neighborhood and have trade-offs. If this is something you would like your community to consider again, we encourage you to talk with the Surrey Downs Community Club Board. Again, these types of improvements would require 65% support of households in your neighborhood.

While speed studies have not been conducted at 110th Ave SE and SE 2nd St, there have been other studies conducted in the neighborhood. Average speeds at two sites on 109th Ave SE were 23 mph. Details can be found on the following page.



With the economic downturn, many City programs saw significant reductions, including the Neighborhood Traffic Calming Program. Because staffing and funding have been reduced, we are requesting the assistance of neighborhoods more than ever in our efforts to improve traffic safety. Speeds often decrease when residents actively participate in traffic education programs, such as through the Neighborhood Speed Watch Program. This program allows you to borrow a portable radar unit and record information about vehicles you observe traveling at or above 30 mph. From this information, we will locate the registered owner of the vehicle and send a letter to them asking for their cooperation in reducing their speed.

Additionally, you may borrow a portable radar dolly for a period of two weeks. If you continue to be concerned with speeds on your street, we encourage you and your neighbors to work with us in educating the public about traffic safety through one of our education programs. If you would like to contact our Police Department and request enforcement, please do so by calling 425-577-5656.

We appreciate your concerns and look forward to working with you through our education programs. We also encourage you to work with the Surrey Downs Community Club should you wish to pursue measures to address cut-through traffic. If you have any questions, please feel free to contact me at lglas@bellevuewa.gov or 425-452-2841.

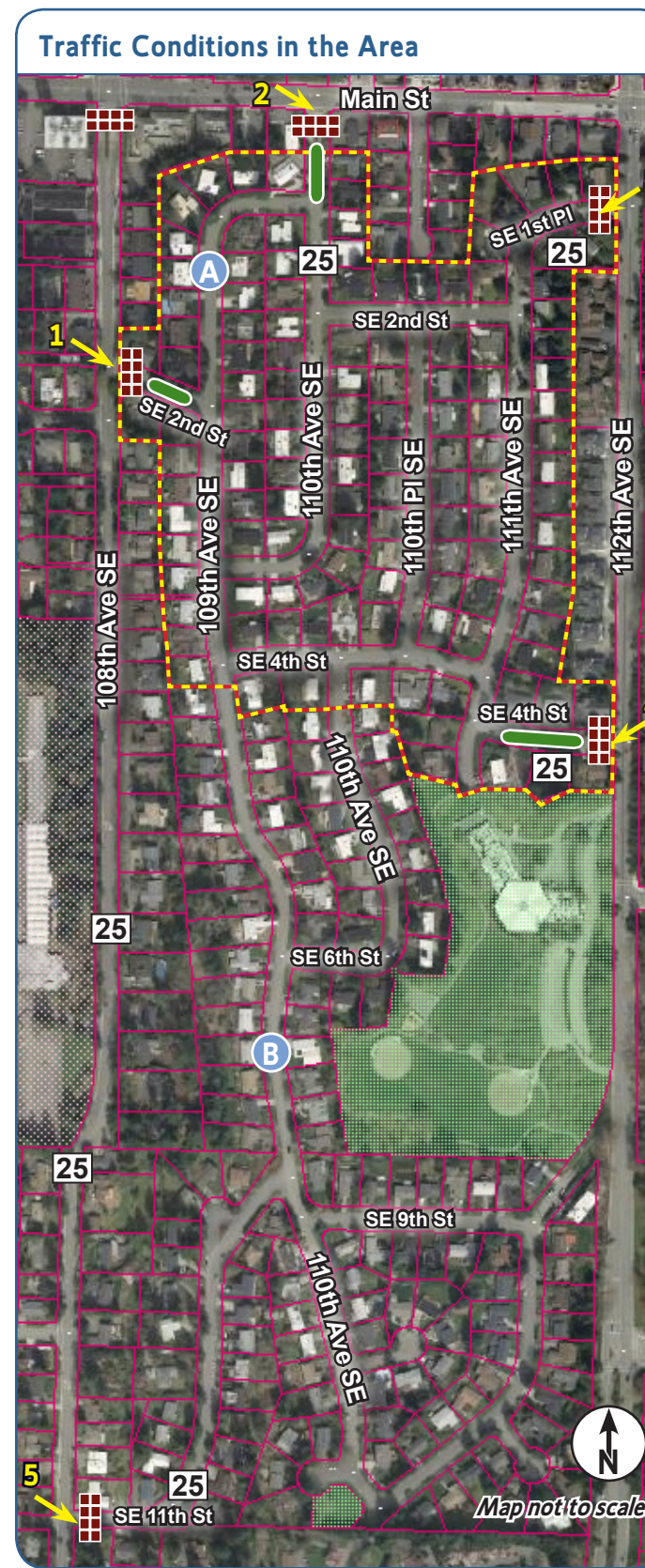
Sincerely,

Linda Glas

Linda Glas
Neighborhood Transportation Safety Services
Transportation Department

Images from Surrey Downs

Entrances into Surrey Downs have brick entry treatments (left), 25 mph pavement legends, and/or entry medians (below).



Data Collection: Speed Studies		
Position	A	B
Location	109 th Ave SE north of SE 2 nd St.	109 th Ave SE south of SE 4 th St.
Year of Study	2006	2009
Vehicles Recorded	654**	1416***
Average Speed	Northbound	23
	Southbound	23
85% Speed*	Northbound	29
	Southbound	28

*85% of vehicles traveling at or below this speed
** 24-hour study *** 48-hour study

Volume Counts (2000)

- 1 742 vehicles per day
- 2 669 vehicles per day
- 3 229 vehicles per day
- 4 680 vehicles per day
- 5 525 vehicles per day

- 25 mph legends
- Entry Medians
- Entry Treatment
- Residential Parking Permit Zone 1

