

IMPORTANT PHONE NUMBERS

**Street Maintenance Department**..... (425) 452-7840  
*damaged signs, potholes, or icy streets*

**Police Traffic Division**..... (425) 577-5656  
*loud noise, speeding vehicles, and illegal parking*

**Neighborhood Traffic Calming Program**..... (425) 452-2841  
*pedestrian safety issues, outreach*

**General Transportation Questions**.....(425) 452-6856  
*[http:// www.bellevuewa.gov/transportation](http://www.bellevuewa.gov/transportation)*



September 19, 2011

Bellevue, WA 98008

**Subject: Traffic Concerns on 172nd Ave NE south of Northup Way**

Dear

Thank you for participating in the Neighborhood Traffic Calming Program and letting us know your concerns on 172nd Ave NE near your home. We have completed our field reviews and data analysis of the location and would like to share with you our findings.

Speed studies have been collected over the years on 172nd Ave NE south of your cul-de-sac. These speed studies have recorded the average speed of motorists as 23-25 mph, with 85% of drivers traveling at or below 29-30 mph along this 25 mph street. We realize that there continue to be motorists who choose to drive faster than the posted speed limit. Due to emergency response delays caused by physical measures, speed humps and other physical measures are limited to locations where speeds are much higher than 172nd Ave NE. Our guidelines for the use of speed humps require that 15% of motorists must be exceeding 35 mph. Based on our speed studies, 172nd Ave NE does not qualify for speed humps.

You had also requested that the bushes/trees near the mailboxes be trimmed to increase visibility for motorists exiting the cul-de-sac. The resident was notified of this concern and has recently completed the trimming to meet our sight distance guidelines.

With the economic downturn, many City programs saw significant reductions, including the Neighborhood Traffic Calming Program. Because staffing and funding have been reduced, we are requesting the assistance of neighborhoods more than ever in our efforts to improve traffic safety. Speeds often decrease where residents actively participate in traffic education programs, such as through the Neighborhood Speed Reduction Program, or by borrowing a radar dolly. If you continue to be concerned with speeds on your street, we encourage you and your neighbors to work with us in educating the public about traffic safety through one of our education programs. In addition, if you would like to contact our Police Department and request enforcement, please do so by calling 425-577-5656.

We appreciate your concerns and look forward to working with you through our education programs. Please feel free to contact me at [lglas@bellevuewa.gov](mailto:lglas@bellevuewa.gov) or 425-452-2841.

Sincerely,

Linda Glas, P.E.  
Neighborhood Traffic Project Manager  
Transportation Department





## General Information

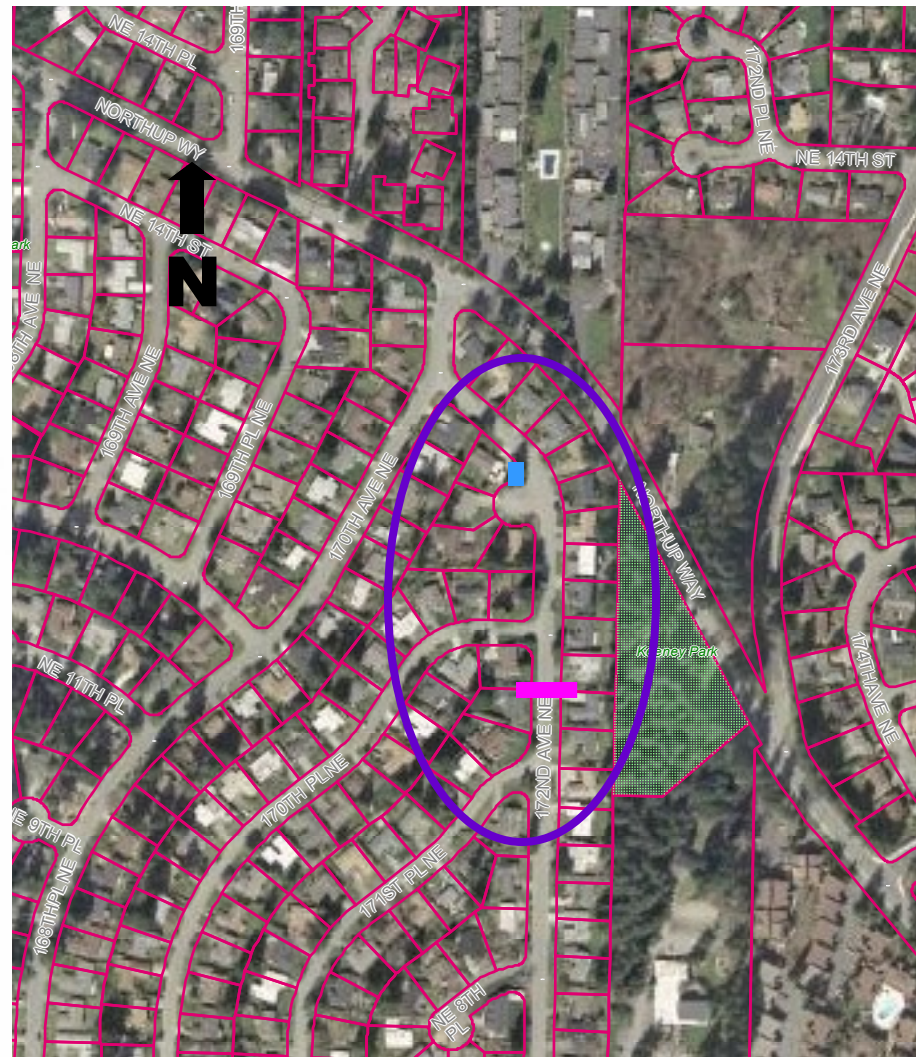
### 48-Hour Speed Studies

Date Conducted	Location	Traffic Volume Recorded	Northbound Speed Study	Southbound Speed Study	Average Speed
2/6/08- 2/7/08	172nd Ave NE north of 171st PI NE	668 Vehicles	30 MPH*	30 MPH*	23 MPH

*\*85% of motorists were recorded traveling at or below this speed.*

### Legend

- Speed/Volume Count
- Brush Trim Location



### ***Recommendations for Resident Participation***

**Radar Dolly**—We have a portable radar sign on a dolly residents can borrow and place on their street for up to two weeks. This unit gives motorists feedback on the speed at which they are driving, encouraging them to obey the speed limit.



Radar Dolly

**Neighborhood Speed Watch**—One of the ways you can help to address periodic speeders is by borrowing a radar unit and participating in our Neighborhood Speed Watch Program. Using the radar unit, you can record information about vehicles you observe traveling at or above 30 mph. From this information, we will locate the registered owners of the vehicles and send a letter to them asking for their cooperation in reducing their speed.

**Neighborhood Speed Reduction (NSR) Program**—This neighborhood-sponsored program involves lending portable signs to the neighborhood for four months, encouraging motorists to respect the neighborhood, drive responsibly and drive 25 mph.

Along with the signs, a neighborhood Pace Car program is organized with residents setting the pace for the motorists following them by driving 25 mph.



NSR Sign

Please feel free to contact me at [lglas@bellevuewa.gov](mailto:lglas@bellevuewa.gov) or 425-452-2841 if you feel your neighborhood would benefit from participating in the programs or recommendations listed above.

