

## #2011-004 SE 25th St west of 108th Ave SE

August 4, 2011

[REDACTED]  
Bellevue, WA 98004

**Subject: Traffic Concerns on SE 25th St west of 108th Ave SE**

Dear [REDACTED]

Thank you for participating in the Neighborhood Traffic Calming Program and letting us know your concerns on SE 25th St near your home. We have completed our field reviews and data analysis of the location and would like to share with you our findings.

Speed studies on SE 25th St recorded the average speed of motorists as 27 mph, with 85% of drivers traveling at or below 31 mph along this 25 mph street. We realize that there continue to be motorists who choose to drive faster than the posted speed limit. Due to emergency response delays caused by physical measures, speed humps and other physical measures are limited to locations where speeds are much higher than SE 25th St. Our guidelines for the use of speed humps require that 15% of motorists must be exceeding 35 mph. Based on our speed studies, SE 25th St does not qualify for speed humps.

With the economic downturn, many City programs saw significant reductions, including the Neighborhood Traffic Calming Program. Because staffing and funding have been reduced, we are requesting the assistance of neighborhoods more than ever in our efforts to improve traffic safety. Speeds often decrease where residents actively participate in traffic education programs, such as through the Neighborhood Speed Reduction Program, or by borrowing a radar dolly. If you continue to be concerned with speeds on your street, we encourage you and your neighbors to work with us in educating the public about traffic safety through one of our education programs. In addition, we have sent a copy of the most recent speed study to our Police Department for review of their enforcement efforts. If you would like to contact them directly in the future, please do so by calling 425-577-5656.

We appreciate your concerns and look forward to working with you through our education programs. Please feel free to contact me at [lglas@bellevuewa.gov](mailto:lglas@bellevuewa.gov) or 425-452-2841.

Sincerely,

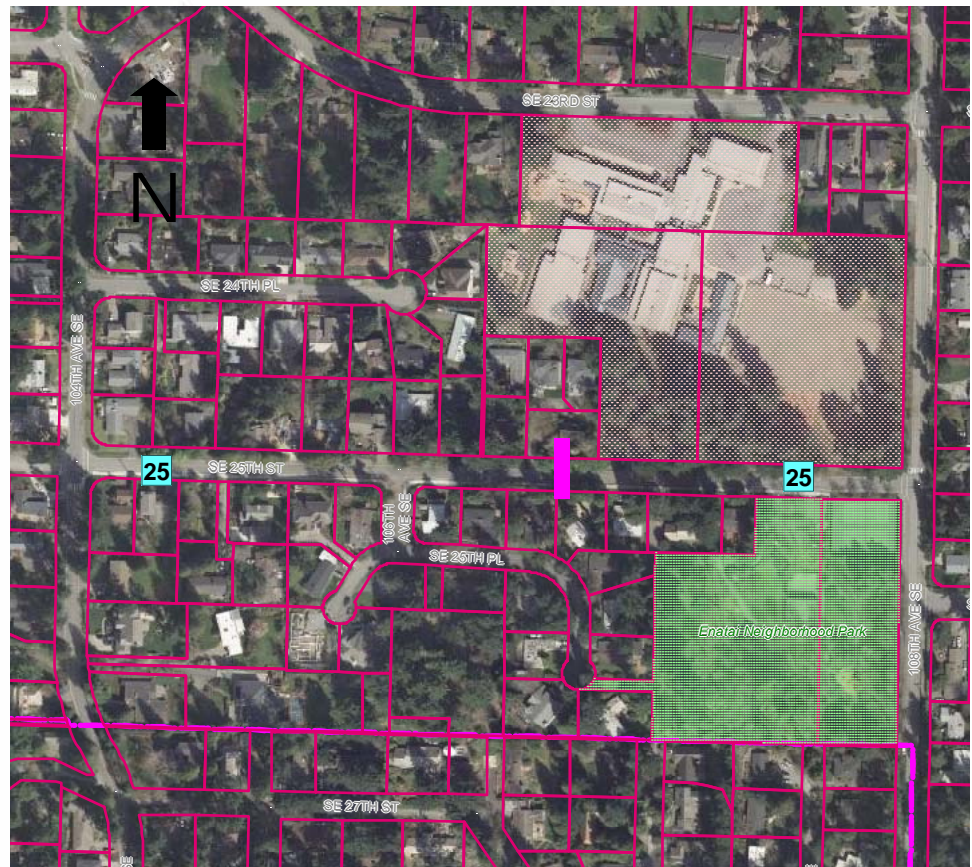
Linda Glas, P.E.  
Neighborhood Traffic Project Manager  
Transportation Department



### General Information 48-Hour Speed Studies

Date Conducted	Location	Traffic Volume Recorded	Eastbound Speed Study	Westbound Speed Study	Average Speed
5/17/11-5/18/11	SE 25th St Near 10618	1836 Vehicles	31 MPH*	31 MPH*	27 MPH

*\*85% of motorists were recorded traveling at or below this speed.*



#### Legend

- Speed/Volume Count
- Existing 25 MPH Markings



### ***Recommendations for Resident Participation***

**Radar Dolly**—We have a portable radar sign on a dolly residents can borrow and place on their street for up to two weeks. This unit gives motorists feedback on the speed at which they are driving, encouraging them to obey the speed limit.



Radar Dolly

**Neighborhood Speed Watch**—One of the ways you can help to address periodic speeders is by borrowing a radar unit and participating in our Neighborhood Speed Watch Program. Using the radar unit, you can record information about vehicles you observe traveling at or above 30 mph. From this information, we will locate the registered owners of the vehicles and send a letter to them asking for their cooperation in reducing their speed.

**Neighborhood Speed Reduction (NSR) Program**—This neighborhood-sponsored program involves lending portable signs to the neighborhood for four months, encouraging motorists to respect the neighborhood, drive responsibly and drive 25 mph.



NSR Sign

Along with the signs, a neighborhood Pace Car program is organized with residents setting the pace for the motorists following them by driving 25 mph.

Please feel free to contact me at [lglas@bellevuewa.gov](mailto:lglas@bellevuewa.gov) or 425-452-2841 if you feel your neighborhood would benefit from participating in the programs or recommendations listed above.



### IMPORTANT PHONE NUMBERS

- Street Maintenance Department**..... (425) 452-7840  
*damaged signs, potholes, or icy streets*
- Police Traffic Division**..... (425) 577-5656  
*loud noise, speeding vehicles, and illegal parking*
- Neighborhood Traffic Calming Program**..... (425) 452-2841  
*pedestrian safety issues, outreach*
- General Transportation Questions**.....(425) 452-6856  
*[http:// www.bellevuewa.gov/transportation](http://www.bellevuewa.gov/transportation)*

