

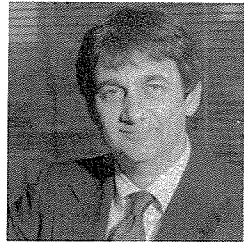
Bellevue,
Washington

1985 Police Department Annual Report



PUBLIC OFFICIALS

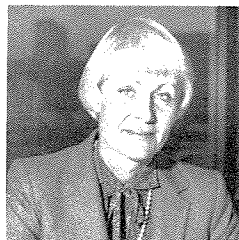
City Council



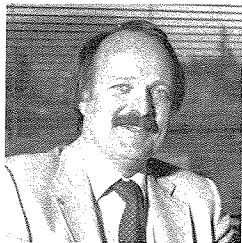
Honorable Cary Bozeman
Mayor



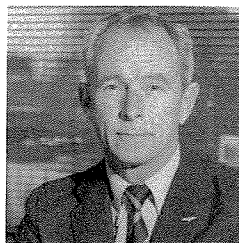
Honorable Tom Hansen
Mayor Pro-Tem



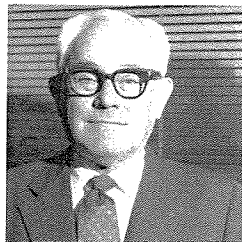
Honorable Nan Campbell



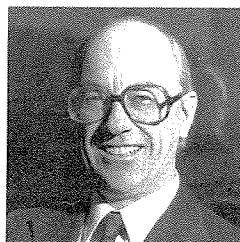
Honorable Don Davidson



Honorable Jim Keeffe



Honorable Bill Lagen



Honorable Don MacKenzie

Civil Service Commission

Mr. Earle Murray, Chairman
Ms. Laverne Hall
Mr. Harold Corkrey
Mr. H. Michael Green

CHIEF'S MESSAGE



Phillip K. Kushlan, City Manager
City of Bellevue, Washington

Dear Mr. Kushlan

The year 1985 marked the end of an era. With the retirement of Chief D.P. Van Blaricom in December, the Bellevue Police Department lost a 29-year veteran and a driving force in the successful development of the Department. Van's accomplishments and contributions to the Department and the community are too numerous to list in this message. It will suffice to say that we of the Police Department recognize his contributions and he will be missed. The facts and figures presented in this report are a tribute to Van; I therefore dedicate this message to him.

A significant 1985 accomplishment was the completion and opening of the new Communications Center located beneath Fire Station #3. Equipped with state-of-the-art electronics, including computer-aided dispatching capabilities and the County-wide Enhanced 911 emergency telephone

system, the new center is now providing swift, efficient dispatching services to Bellevue and seven other eastside emergency response agencies. The Communications Center has already attracted attention from many agencies around the country as it is recognized as a model worth considering for planning purposes. Other notable achievements include:

- * It was necessary to mobilize the Tactical Arms Group (TAG) on four occasions involving barricaded persons (some included hostages). Two suspects voluntarily submitted after police negotiators talked them out and two were seized by non-violent force. No shots were fired nor were any injuries sustained in any of these situations.
- * The department was a prime mover in the formation of the Eastside Crime Stoppers, Inc. program in 1984 which advertises details of specific crimes and offers rewards for pertinent information. Since that time 32 cases have been solved resulting in \$48,700 in recovered property and \$321,582 in seized drugs—an excellent example of regional cooperation.
- * Bellevue Police representatives were involved in the successful grant proposal via the Washington Traffic Safety Commission that would replace breathalyzers with state-of-the-art infra-red breath testers throughout the state. Bellevue was the first to receive and train personnel in the use of these instruments.

As you can see, the Bellevue Police Department remains a leader in law enforcement innovation and techniques.

With traffic being a major problem facing the City, it is encouraging to note that in spite of the increasing number of vehicles and congestion, traffic accidents rose only 1% (35% lower than our highest accident year in 1976). The Department's continuing fight against the drinking driver ac-

celerated with a 6% increase in DWI arrests and produced a respectable 17% decrease in alcohol-related traffic accidents. These results are particularly gratifying.

The crime picture within the City is changing as we are completing the transformation from suburban to urban. Overall crime has increased by 15%. Although this increase may indicate that the Department's resources are not keeping pace with the changing crime complexion, the 28% increase in arrests of Part I crime offenders and the 10% increase in recovered stolen property certainly demonstrates the continuing professional growth of our personnel. On the bright side of the rising statistics is the fact that crime is still below the overall high reached in 1980.

Even though we would all like to see a continuing decline in crime statistics to go along with our other accomplishments, I am pleased with the Department's efforts in dealing with the increase. Be assured, the men and women of the Bellevue Police Department are the best, will stay the best, and will place community services as their top priority. We will continue to strive to keep Bellevue a safe place to live.

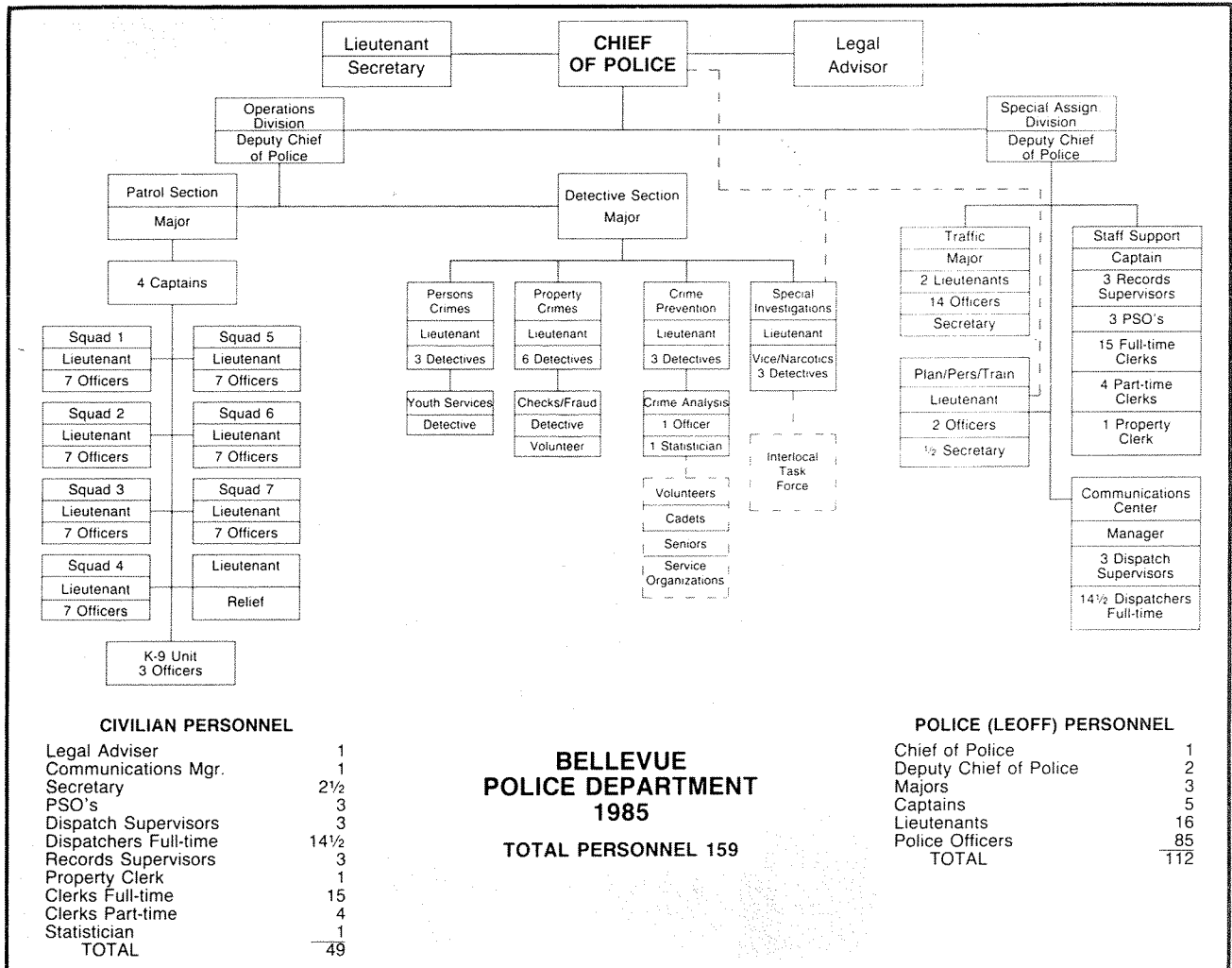


G. Arcand
Chief of Police

CONTENTS

Personnel Chart.....	1
Personnel/Budget.....	2
Arrest Statistics.....	3
Crime Statistics.....	4
Patrol.....	5
K-9.....	6
Hazardous Devices.....	6
Tactical Response.....	7
Traffic.....	8
Traffic Safety.....	8
Crimes Against Persons.....	9
Crimes Against Property.....	10
Special Investigations.....	11
Crime Analysis.....	12
Crime Prevention Unit.....	13
Crime Prevention.....	14
Training.....	14
Communications.....	15
Staff Support.....	16
Promotions.....	16
Employee of the Year.....	16

PERSONNEL CHART



CIVILIAN PERSONNEL

Legal Adviser	1
Communications Mgr.	1
Secretary	2½
PSO's	3
Dispatch Supervisors	3
Dispatchers Full-time	14½
Records Supervisors	3
Property Clerk	1
Clerks Full-time	15
Clerks Part-time	4
Statistician	1
TOTAL	49

**BELLEVUE
POLICE DEPARTMENT
1985
TOTAL PERSONNEL 159**

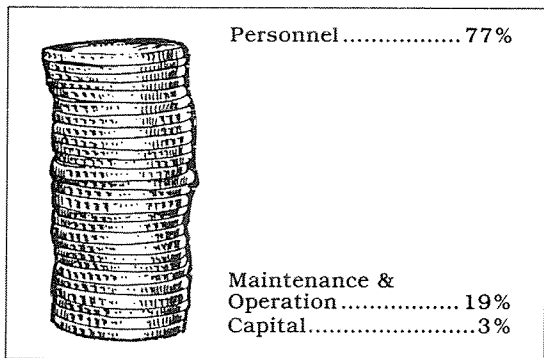
POLICE (LEOFF) PERSONNEL

Chief of Police	1
Deputy Chief of Police	2
Majors	3
Captains	5
Lieutenants	16
Police Officers	85
TOTAL	112

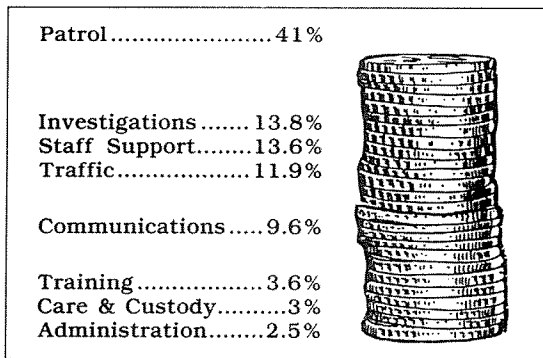
PERSONNEL/BUDGET

City of Bellevue Police Department
 1985 Budget
 \$7,688,680

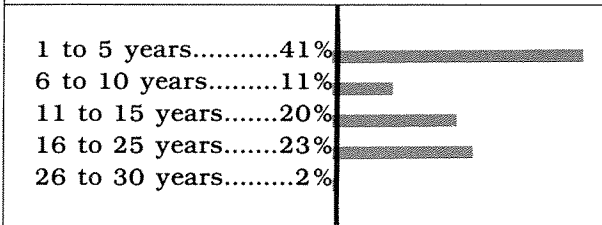
EXPENDITURES



ALLOCATIONS



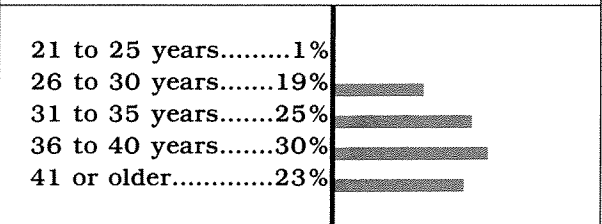
YEARS OF SERVICE



Reflects service at Bellevue only.

47	1 to 5 years	41%
13	6 to 10 years	11%
23	11 to 15 years	20%
26	16 to 25 years	23%
3	26 to 30 years	2%

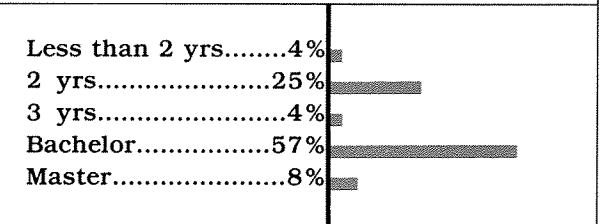
AGE DISTRIBUTION



Reflects service at Bellevue only.

2	21 to 25 years	1%
22	26 to 30 years	19%
28	31 to 35 years	25%
34	36 to 40 years	30%
26	41 or older	23%

COLLEGE EDUCATION



Reflects service at Bellevue only.

9	Masters	8%
64	BA	57%
5	3 Yrs	4%
29	2 Yrs	25%
hs 3/2	Less than 2 yrs	4%

ARREST STATISTICS

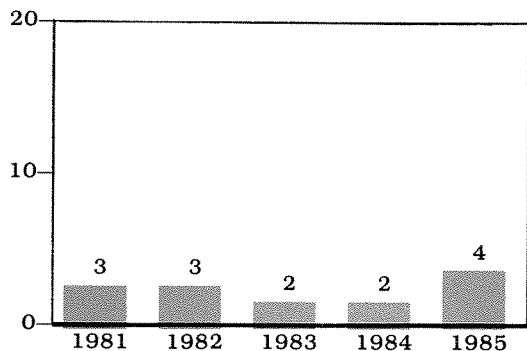
1985 ARREST DATA

CRIME	PART I CRIMES			
	ADULT		JUVENILE	
	1985	1984	1985	1984
Arson	1	2	4	7
Assault	294	195	42	35
Burglary, Residential	33	23	44	50
Burglary, Commercial	20	18	6	15
Burglary, Other	11	5	6	8
Homicide	2	1	0	0
Homicide Attempts	0	0	0	0
Motor Vehicle Strips/Prowls	13	12	25	24
Shoplift	278	214	436	320
Theft, Other	86	79	60	60
Theft, Motor Vehicle	13	11	27	20
Rape	14	6	3	6
Robbery, Armed	2	4	2	2
Robbery, Strong Arm	5	4	1	0
Kidnapping	4	1	1	0
	<u>776</u>	<u>575</u> + 34.9%	<u>657</u>	<u>547</u> + 20%
PART II CRIMES				
Exposing	6	9	0	0
Forgery	22	15	3	6
Malicious Mischief	45	27	30	25
Molesting	5	9	1	0
Possession Stolen Property	74	45	27	17
* All Others	<u>2041</u>	<u>1970</u>	<u>360</u>	<u>240</u>
	2193	2075 + 5.6%	421	288 + 46%
GRAND TOTALS	2969	2650 + 12%	1078	835 + 29%

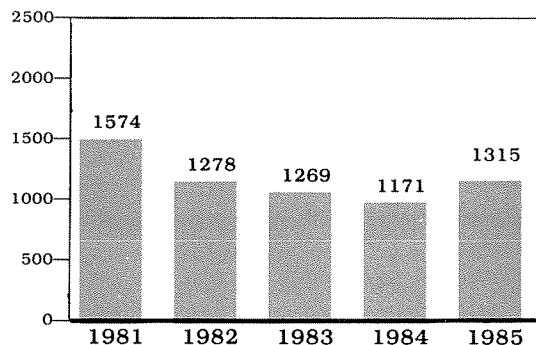
* Does not include traffic arrests, except driving while intoxicated.

CRIME STATISTICS

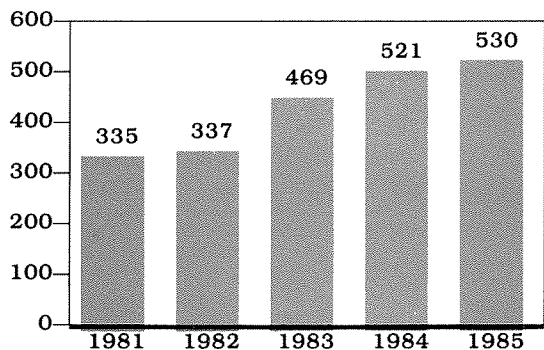
HOMICIDES



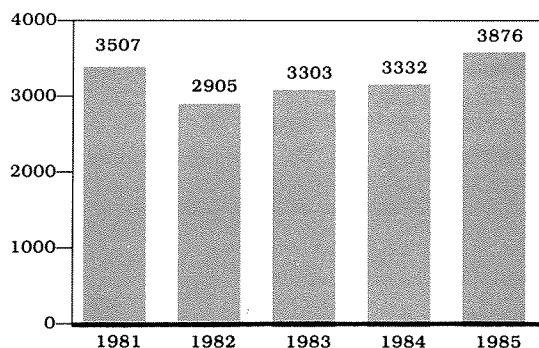
BURGLARIES



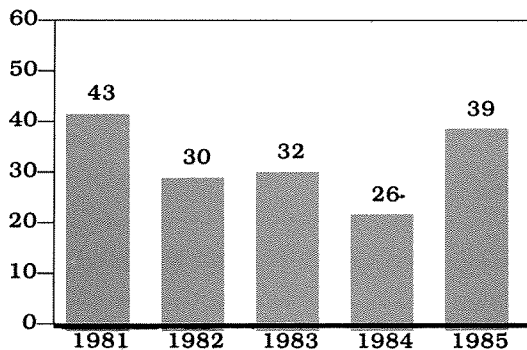
ASSAULTS



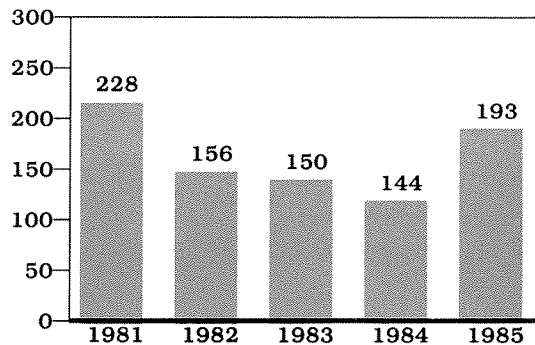
THEFT



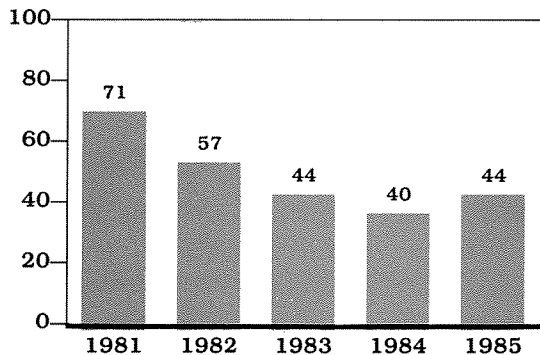
RAPES



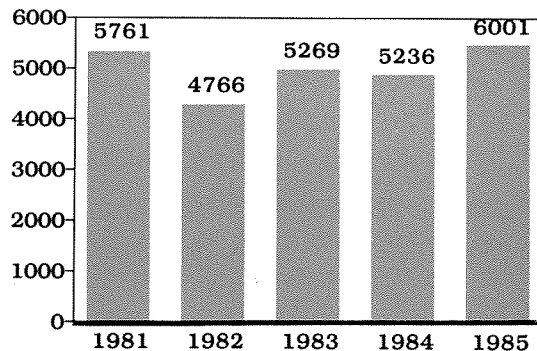
MOTOR VEHICLE THEFTS



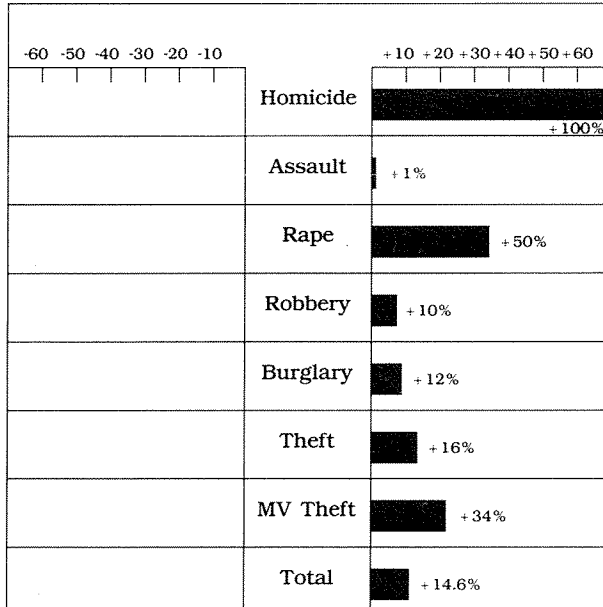
ROBBERIES



OVERALL CRIME

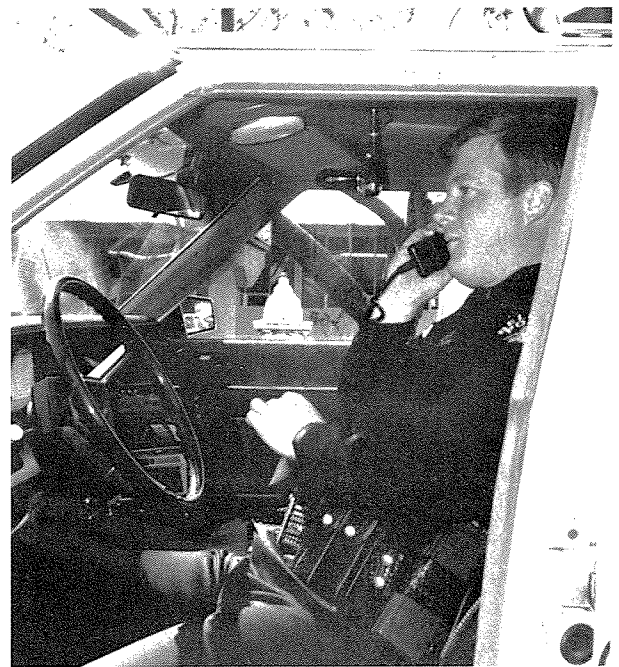


**PERCENTAGE CHANGE IN
CRIME
1984 1985**



PATROL

While the Patrol Section's major responsibilities are the initial response to calls for service, the officers take great pride in successful conclusion of cases which are assigned to each officer for investigation. In 1985 the Patrol Section took 8,575 written case reports and succeeded in closing 2,665 of those cases without forwarding the cases to other sections for investigation. General calls for service numbered over 34,000 which was an increase of 10,000 compared to 1984.



Three areas of enforcement and prevention were identified for concern by patrol officers and their supervisors: arrest and prosecution of those cohabitants responsible for domestic violence; strict enforcement of DWI statutes in conjunction with the Traffic Section; and the arrest of those responsible for the dramatic increase in thefts of property and equipment from motor vehicles. The Patrol Section is proud of their response in those areas.

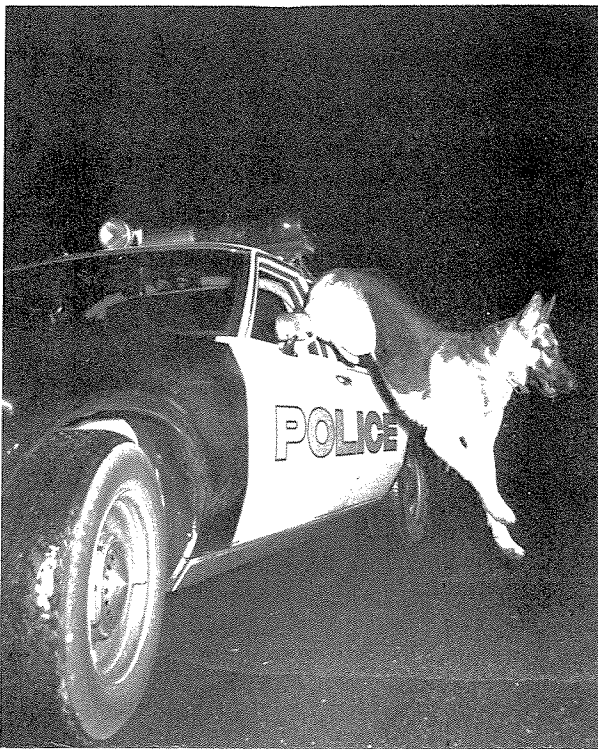
The Patrol Section's sole reason for its existence is to serve the needs of the community and officers and supervisors are highly motivated towards that end. As a result the department has established a positive citizen/police relationship. The active partnership between the public and their police will continue into 1986.

K-9

1985 was a year of growth and development for the Bellevue K-9 Unit. The year began with one in-service K-9 team, two less than the authorized strength. By year's end, two new officers/handlers and dogs had been selected, trained and made operational. The result was a new emphasis on the role K-9 plays in the success of the overall patrol function.

Although under strength much of the year, officers of the K-9 Unit made significant contributions to patrol's performance by responding to 1,199 calls, conducting 136 tracks, 239 building and area searches and recovering \$1,855 in stolen property. K-9 teams were responsible for 69 arrests. The Unit responded to 34 requests for assistance from neighboring police departments.

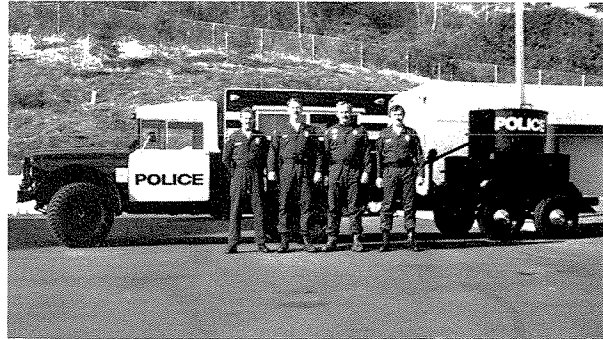
An enhanced K-9 training program was initiated in the fall of 1985, whereby hands-on training was provided to members of patrol. Officers were involved in the actual observation of K-9 tracks, building searches, etc.



With K-9 back to full strength, staffed by highly motivated, high performance officers and combined with the new working relationship with fellow patrol officers, the future looks bright for Bellevue K-9.

HAZARDOUS DEVICES

The Hazardous Device Unit in 1985 saw an increase in calls for service. The Unit also altered its internal structure to 1 Captain, 1 Lieutenant and 2 officers.



Education and recognition of explosives and illegal fireworks were primary concerns for the Unit in 1985. A public display and demonstration was put on at the Training Center of illegal fireworks and their explosive dangers.

The Unit was also involved in several investigations. One resulted in the seizure of 3400 lbs of illegal fireworks with the suspect pleading guilty to all charges.

There was also a sharp increase in calls from outside agencies in regards to found explosives in hazardous condition. One assist to Mercer Island PD was the recovery of a case of sweated dynamite from the attic of a private residence. Due to storage problems because of the instability of these types of explosives, they must be transported and destroyed immediately.



TACTICAL RESPONSE



In 1985 the Tactical Response Unit was mobilized on four occasions to deal with armed and barricaded individuals. Two of these were negotiated to conclusion prior to deployment of the Tactical Arms Group, and the other two resulted in the Tactical Team arresting the suspects without incident. Safe resolution of tactical incidents over the years can be directly attributed to Bellevue Police Department's commitment to training and support for the dedicated volunteers in the tactical response group. Managerial support and the dedication of the volunteer officers has made an unbeatable team for tactical incident management.



The Bellevue Police Tactical Response Unit has existed since 1976, when the "Tactical Arms Group" was formed. The Tactical Arms Group is half the Tactical Response Unit and consists of ten officers and two supervisors who are highly trained in dealing with high risk, hostage, and barricaded person incidents. The other half of the Tactical Response Unit is the "Crisis Negotiations Team," which was formed in 1981. This team consists of six officers and two supervisors who are also volunteers specially trained in crisis negotiations and techniques. The two units are under the command of the tactical incident Commander. The units train and work closely to safely manage tactical situations.

The Tactical Response Unit has a full complement of "state-of-the-art," equipment, technology and weaponry and maintains a high degree of training and preparedness. The overall unit goal has remained constant. This goal is safe management through negotiations and non-lethal intervention. The unit has maintained a perfect record of safe crisis management (no shots fired, no persons injured).

TRAFFIC

The most significant purpose of traffic law enforcement is accident prevention. The Bellevue Police Department's Traffic Section has long recognized this fact and the Unit's 1985 performance reflects an ongoing commitment to making Bellevue a safer community.

Bellevue City street traffic accidents showed no increase over 1984 and total accidents were 10% below 1978 levels. The continuance of the enhanced Selective Enforcement program, instituted in 1984, resulted in a 4% increase in citations in specific "enforcement areas" but more importantly reflected a 3.5% decrease in traffic accidents. Within the heavily traveled Central Business District and Midlakes enforcement areas, accidents were down 6% versus 1984 with enforcement increasing by 13%.

Traffic officers were responsible for investigating 87% of the total number of accidents reported in 1985 while issuing 84% of the total number of enforcement citations. Traffic officers also made 130 other criminal arrests.

As Bellevue continues its rapid growth, parking and other related difficulties that impact the safe and expeditious flow of traffic become more of a priority and a drain on resources. This is reflected by the 1984 increase in parking citations of 21% and the 15% increase in calls for miscellaneous traffic services.

Continued emphasis on the intoxicated driver by both the Traffic and Patrol sections resulted in a 6% increase in arrests and a significant reduction of 17% in DWI-involved traffic accidents. Members of the Unit continue to work with and support the Bellevue Community DWI Task Force.



TRAFFIC SAFETY

In 1984, the Bellevue Police Department Traffic Safety Program continued to expand and develop as a primary part of the Accident prevention Program.

Traffic officers participated in programs that encompassed the entire community from preschool task to adult safety meetings. Major traffic safety displays were held at the Bellevue Home Show and Arts & Crafts Fair.

One of the most successful programs over the past few years has been the joint effort of the Bellevue Community DWI Task Force and the Traffic Section in DWI education and prevention. The Task Force's Third Annual Bumper Sticker Poster & Bookcover Contest, involving well over 1,000 Bellevue School District students, was a success worth noting. The winning bumper stickers remain the number-one handout material at displays.



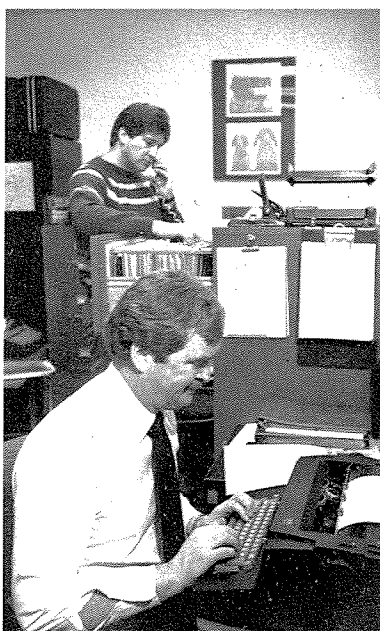
So successful has the Task Force program been that the Washington State Traffic Safety Commission has authorized formation of a regional Eastside DWI Task Force. This group, headquartered in Bellevue and building on the foundation of the local Task Force, will involve many eastside communities and give new emphasis to reducing the incidents of DWI.

1985 saw Bellevue chosen as the first police department in the State to receive the BAC Verifier, the State's new instrument for determining breath alcohol. Department enforcement officers were trained on the new instrument and are beginning to recognize the benefits from this improved system.



TRAFFIC STATISTICS

	1984	1985	% Change
Accidents	2,139	2,163	+1%
Persons Injured	742	782	+5%
Pedestrian Accidents	4	36	+6%
Bicycle Accidents	9	32	-18%
Travel Fatalities	1	4	+300%
Hit & Runs	485	538	+11%
DWI Accidents	81	67	-17%



CRIMES AGAINST PERSONS

The Lieutenant and three Detectives are responsible for the investigation of all major crimes including homicide, robbery, rape, child sexual exploitation and abuse, aggravated assault and arson. In addition to their investigative responsibilities the Persons Detectives assisted Patrol Personnel with crime scene processing, coordinative and informational services, and provided in-house training to Bellevue officers. Detectives were also instrumental in providing instruction at the State Training Academy in Crime Scene Collection techniques.

During the latter part of 1985 the Crimes Against persons Section was reorganized and Detectives were individually assigned to either robbery, sex offenses, or assault cases. Homicide investigations are shared by the entire section.

The Crimes Against Persons Section investigated 262 major crimes in 1985 which included 4 homicides, 39 rapes and 24 armed robberies. The Persons Detectives had a +200% increase in the clearance of homicide cases and a +108% increase in the clearance of rape cases over 1984.

In 1985 each of the Persons Detectives received extensive training in Advanced Homicide Investigations conducted by Robert Keppel of the Attorney Generals Office and a Coordinator for the Green River Task Force.

Bellevue Persons Detectives also investigated Washington State's first "Mercy Killing" which resulted in the defendant pleading guilty of killing his wife of 61 years because of medical problems.



CRIMES AGAINST PROPERTY

The Crimes Against persons Section investigated the City of Bellevue's largest monetary loss in a robbery occurring at Black, Starr and Frost in Bellevue Square. The loss was \$320,000 in fine jewelry items. A fifteen year old juvenile from Los Angeles, California was arrested at Sea-Tac Airport as he attempted to flee with three others. This subject was subsequently charged and plead guilty to the robbery. The investigation revealed that this robbery was related to "Gang Activity" in the LA area and part of a sophisticated nationwide scheme. To date, there has been no recovery of jewelry. It is anticipated that in the near future additional participants in the robbery will be identified.

Bellevue persons Detectives were also instrumental in establishing regular meetings for puget Sound Region Homicide Investigators. Detectives from King, Pierce and Snohomish Counties meet once a month to discuss cases of interest in their own jurisdictions and share a multitude of diverse strategies relating to successful homicide investigations.

Persons Detectives, the Youth Services Detective, and Crime Prevention Detectives were involved in a Child Exploitation and Abuse Project with various Social Services Agencies within the City and King County. As a result of this Project, three informational booklets were written for pre-school aged children, adolescents, and adults identifying the problem and methods to resolve such incidents when they arise. Additionally, a model investigations procedure was developed and introduced into departmental policy.

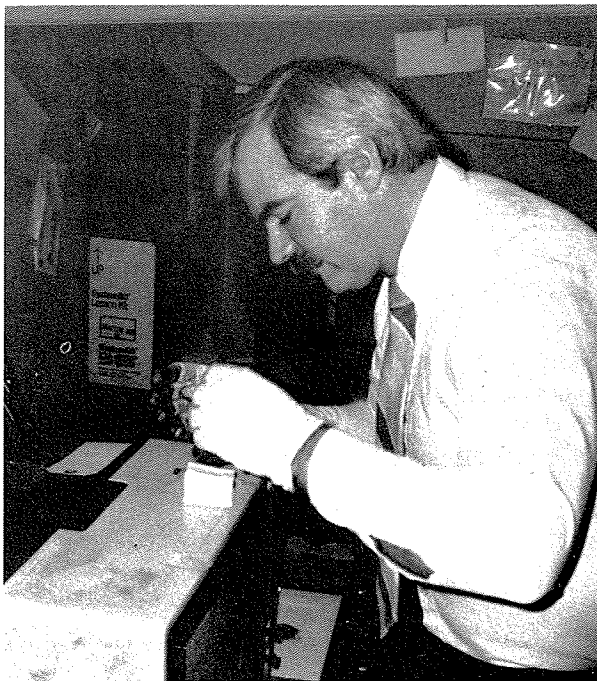
The Crimes Against Persons Section assisted in developing a new crime report package compatible with the Computerized Record Keeping System scheduled for completion 1986.

The Crimes Against Persons Section assisted in developing a new crime report package compatible with the Computerized Record Keeping System scheduled for completion in 1986.

Two hundred sixty-two cases were assigned in 1985 plus several 1984 carryovers. Of these, 189 were closed, 37 by arrest and 33 by summons. Total felony arrests were 59; total misdemeanor arrests were 21.

Crimes Against persons Detectives served 28 search warrants and recovered \$5,290.00 in stolen property.

The Property Crimes Unit of the investigations Section is comprised of one Lieutenant and seven detectives. The primary responsibility of this unit is to provide follow-up investigation for a variety of property crimes which include residential and commercial burglary, auto theft, extortion, forgery, fraud, theft, and check and credit card crimes. Additionally, one member of this unit is currently designated as the Department polygraph operator. In addition to their primary assignment, Property Detectives provide technical support for the uniformed officers in the Patrol Section of the operations Division and provide assistance to detectives in the Persons Crimes Unit.



In 1985, Detectives in the Property Crimes Unit investigated 2,062 cases and closed 880 cases (42.7%), arrested 194 suspects and filed charges on an additional 90 suspects without arrest. They served 96 search warrants and recovered stolen property valued at \$1,093,421, which is 83% of the stolen property recovered by the entire Department and 26% of the reported loss.

The unit Check/Fraud Detective investigated 912 cases, which included forgery, bad checks, and frauds. Of these cases, 492 were closed (54%) and approximately \$32,000 was recovered in the form of restitution. The estimated loss in these cases in \$250,000

SPECIAL INVESTIGATIONS



In 1985, these detectives solved an extortion case, involving the loss of specialized video equipment valued at \$110,000, recovering the equipment and arresting three suspects; they broke up a major stolen property fencing ring in the Crossroads area, which led to the recovery of approximately \$50,000 in stolen property and the arrest of four suspects with criminal charges filed against five others; they completed an investigation involving a major credit card fraud ring which netted a \$200,000 recovery; they assisted the Kirkland Police Department detectives with a case involving lewd conduct and solicitation at a local shopping complex that led to 22 arrests; they cleared a string of 37 commercial burglaries with the arrest of a paroled burglar; they cleared a string of 30 residential burglaries with the arrest of two suspects; and seized stolen computer equipment valued at \$30,000 while investigating a computer trespass case.

One lieutenant and three detectives conduct narcotic and vice investigations and provide specialized services and assistance for police operations.

The end of 1985 marks the completion of the 4th year of the Eastside interlocal Enforcement Task Force with measured success reported by all 5 cities involved in pooling manpower, equipment, and resources.

In addition to ongoing district court funding, a one-time state grant initiated in 1984 continued to supplement limited investigative funds.



Street value of narcotics seized in 1985 exceeded \$2,000,000 and real property seized (cash, vehicles, equipment) exceeded \$100,000.

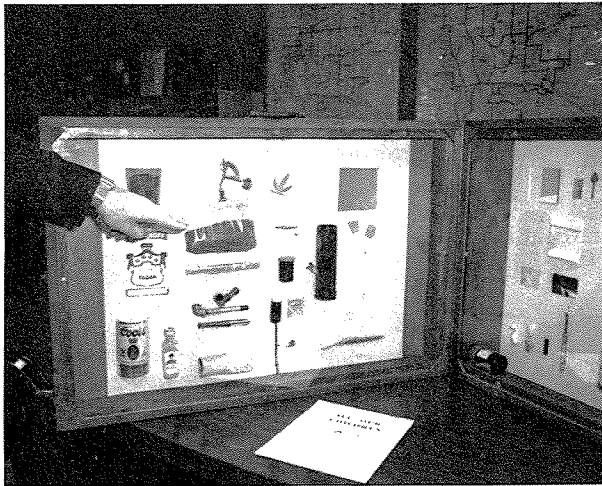
Investigative priorities established for 1985 targeted local cocaine dealers and indoor marijuana growers as well as dealers of LSD and "Mexican tar heroin".

Special investigations detectives devoted substantial time assisting Property and Persons Detectives with covert investigations, resulting in large recoveries of stolen property and successful criminal prosecutions.

The unit developed a proactive approach to investigate, combat, and prevent child sexual exploitation and abuse and is an integral part of a newly formed regional intelligence sharing network.

DRUGS SEIZED

	Amount by Weight or Count	Street Value
Marijuana	418 lbs.	\$1,897,652
Starter Plants	384	192,000
Cocaine	9.8 lbs.	80,920
Heroin	3.2 gms	1,024
LSD	240 hits	1,000
Hashish	1 gm	15
Metamphetamine	1 gm	120
MDA	92 hits	460
Tablets/Capsules	315	2,695
Other	106 gms	1,060
TOTAL		\$1,277,206



CRIME ANALYSIS

The Crime Analysis Unit consists of one police officer and one civilian crime analyst. The officer reviews all incoming crime reports, FIR's and information bulletins from outside agencies in order to determine crime patterns and develop suspect information. This officer acts as a coordinator between the detective and patrol divisions to better share information on criminal activity and attends regional detective meetings to gather and share information on crimes of common interest, and is involved as a police advisor to the Eastside Crimestoppers organization.

The crime analyst prepares monthly statistical reports for the department and completes FBI uniform crime reports. The unit also develops and maintains computerized files of incident reports, stolen property, FIR's and pawn shop transactions. The crime analyst is responsible for computer searches of these files for persons, vehicles, and property.

During 1985, the CAU was involved in selecting a computerized records keeping and crime analysis system for the department. This included completely revising existing report forms so that needed information can be obtained to make the new system function. The CAU is also involved in the "Police Against Child Exploitation" committee, and attends the bi-monthly meetings.

NARCOTICS STATISTICS

Felony Arrests	83
Misdemeanor Arrests	134
Search Warrants-BPD	25
Search Warrants-Assists	17
Drug Cases	290
Prostitution Cases	3
Prescription Violations	3
Gambling Cases	1
Vehicles Seized (Appr. Value)	\$59,300
Cash Seized*	8,695
Equip. Seized (Appr. Value)	32,025
TOTAL	\$100,020

*Includes restitution from King County Superior Court



