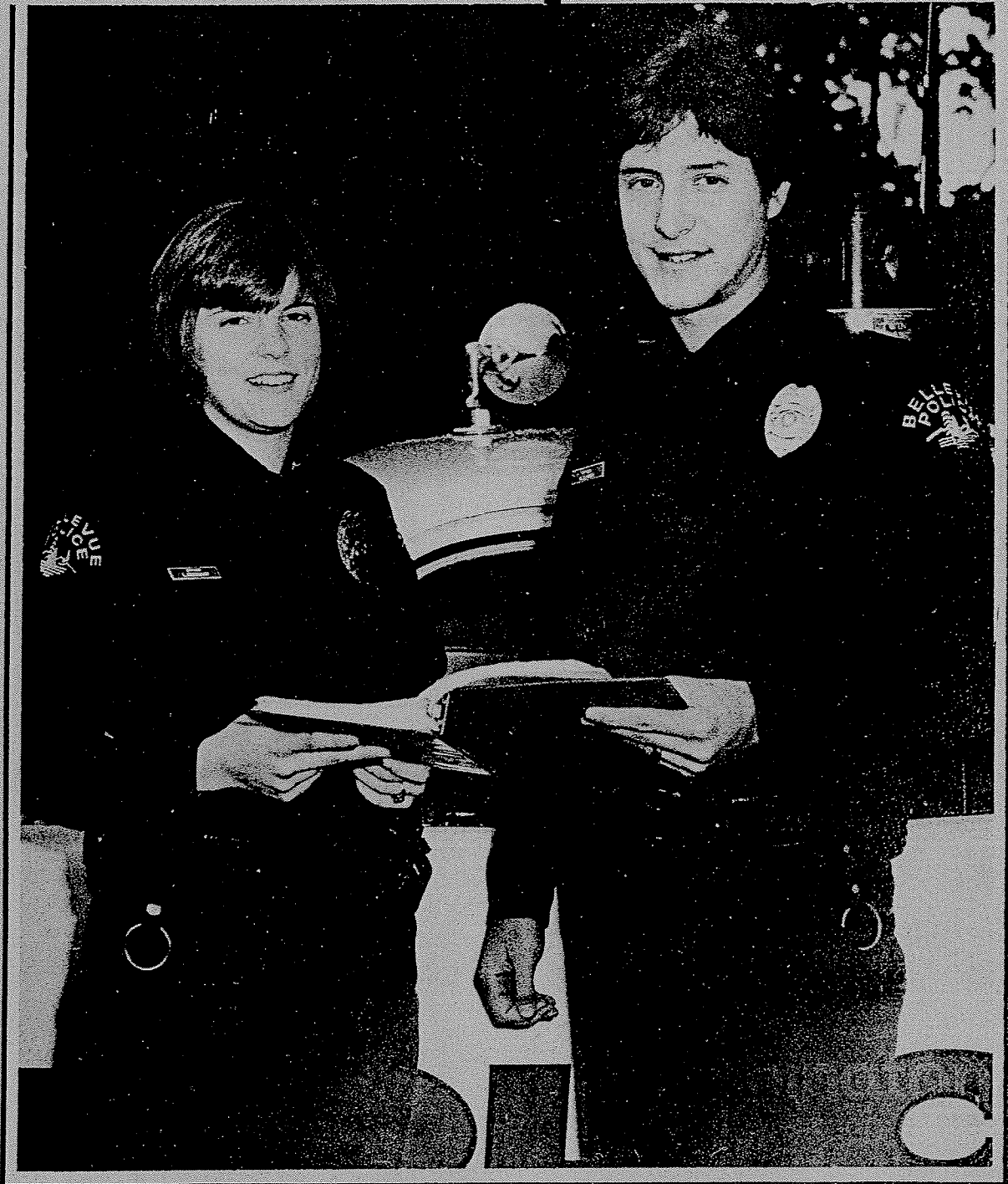


# City of Bellevue, Washington Police Department Annual Report 1974



## TABLE OF CONTENTS

### CHIEF'S MESSAGE

### GENERAL INFORMATION SECTION

CITY OF BELLEVUE GENERAL INFORMATION.....	1, 2, 3
ORGANIZATION CHART.....	4
CITY OF BELLEVUE PUBLIC OFFICIALS.....	5, 6
BELLEVUE POLICE DEPARTMENT PERSONNEL OVERVIEW.....	7, 8
EMERGENCY AND SAFETY SERVICES CHART.....	9
BELLEVUE POLICE DEPARTMENT HISTORY CHART.....	10
BELLEVUE POLICE DEPARTMENT ORGANIZATION CHART.....	11
1974 POLICE BUDGET.....	12
HISTORY OF THE BELLEVUE POLICE DEPARTMENT.....	13 - 16
BUDGET OVERVIEW.....	17
1974 POLICE BUDGET, FUNCTIONAL DISTRIBUTION .....	18

### CRIME STATISTICS SECTION

CRIME STATISTICS 1974.....	19
HOMICIDE.....	20, 21
ASSAULT.....	22, 23
RAPE.....	24, 25
ROBBERY.....	26 - 28
BURGLARY.....	29 - 32
LARCENY.....	33 - 39
AUTO THEFT.....	40, 41
NARCOTICS AND DANGEROUS DRUGS.....	42

### TRAFFIC STATISTICS SECTION

TRAFFIC ACCIDENTS.....	43
BREATHALYZER STATISTICS.....	44

JUVENILE STATISTICS SECTION

ANNUAL JUVENILE ARREST STATISTICS - 1974.....45 - 49

JUVENILE RANAWAY DATA.....50

ARREST DATA

ARRESTS - 1974.....51, 52

CHIEF'S MESSAGE

Mr. L. Joe Miller, City Manager  
City of Bellevue, Washington



Dear Mr. Miller:

Submitted herewith is the 1974 Annual Report of the Bellevue Police Department.

Actually, this is the report of my predecessor, Chief of Police Nick Giardina, who had served in that position since 1959 until his retirement at the end of January, 1975. I would respectfully comment that he presided over and left such a fine organization that we can confidently build into the future because we have the advantage of a high quality operation at the start.

As for what that future will hold, my personal commitment is to expand the human services role of our police in contemporary recognition that the traditional limits of being solely concerned with strictly law enforcement is simply outdated. In my view and that of many others, the police are the only organized group in a position to meet the needs of people suffering personal crises in their daily lives so consequently, we should accept that responsibility and respond to those needs in the most professional manner possible! Certainly, assisting victims of crime is an important part of our complex task, but it is only a part and not the whole job in itself. My direction will be to expand our police consciousness into the rest of our potential for serving a public that created us to provide such service and our newly developed concept of neighborhood/team policing is just the beginning of that expanded role in this community.

I will look forward to reporting upon what we have accomplished in next year's annual report, when 1975 has passed into 1976.

Respectfully submitted,

  
D. P. Van Blaricom  
Chief of Police



G E N E R A L

I N F O R M A T I O N

CITY OF BELLEVUE  
GENERAL INFORMATION

INCORPORATED: March 31, 1953

GOVERNMENT: Council-Manager

LOCATION: Bellevue, in King County, lies east of Lake Washington on Interstate Highway 405, an alternate to north-south Interstate 5 which passes through Seattle. Two four-lane floating bridges (Interstate 90 and State Highway 520) connect with Seattle to the west. Elevation is 168 feet.

POPULATION: City of Bellevue.....64,500  
Greater Bellevue (School Dist. #405).....82,700

Area: 26.4 square miles with 223 miles of public streets.

TRANSPORTATION FACILITIES:

Rail - The Burlington Northern serves Bellevue's industrial area. Spur sidings and tracks are available at selected points. Additional facilities can be installed as needed.

Air - Seattle-Tacoma International Airport is 25 minutes away and Boeing field is twenty minutes. Bellevue Airfield has non-scheduled air service.

Water- The Port of Seattle is about twenty minutes from Bellevue.

Highway - North-south Interstate Highway 405 and east-west Interstate Highway 90 intersect in Bellevue. State Highways 520 and 901 also serve the area.

Truck- Served by all the major truck lines operating in the Seattle-Tacoma complex.

Bus - Municipality of Metropolitan Seattle (METRO) provides scheduled services to and from Seattle, Kirkland, Redmond, Medina and Mercer Island, as well as outer areas of King County. The Suburban Airporter provides scheduled service from Bellevue and other Eastside points to Seattle-Tacoma International Airport.

CITY OF BELLEVUE - GENERAL INFORMATION (Continued)

EDUCATION: There are 24 Elementary Schools, 8 Junior High Schools, 4 High Schools, and Ungraded (handicapped) schools with the total enrollment of 22,291. There are Private and Parochial schools, and higher education with Bellevue Community College which offers over 830 courses with an enrollment of more than 7,000 students.

COMMUNITY FACILITIES: Greater Bellevue has 8 motels with 528 units. The largest of 10 meeting facilities (John Danz Theatre) will seat 1,500 people.

MEDICAL FACILITIES: The medical facilities include one general hospital with 161 beds, 24 hour emergency service and 125 physicians and surgeons. There are also 96 dentists in the Bellevue Area.

CHURCHES: There are 50 churches and over 150 services, community and professional organizations.

RECREATIONAL FACILITIES: They include one nature study park, three sport parks, 7 beach parks, 4 community parks, 3 community centers, 3 greenbelt parks, 6 tennis courts, 5 golf courses, 2 boat ramps, and 18 park sites under development; 2 bowling alleys, 3 ice and roller rinks, riding stables, 9 ski resorts within 1-3 hours drive of Bellevue, yacht club and 2 marinas, 5 private and 2 public swimming pools, Bridle Trails State Park, Lake Sammamish State Park, a year-round recreation program is offered by the City Department of Parks and Recreation.

LOCAL GOVERNMENT: Form of City government is Council-City Manager  
Zoning: City Ordinance No. 1282, County Resolution No. 18801  
Building Code: City and county both operate under Uniform Building Code (ICBO). On June 1, 1970, Bellevue's classification was changed from a third class city to an optional municipal code city.

FIRE DEPARTMENT: Bellevue Municipal Fire Department covers the area between Lake Washington and Lake Sammamish, northerly to N.E. 60th, southerly to Pleasure Point and including portions of King County south of I-90. Sixty-five full time firefighters and 50 volunteers are available to respond with eight engines, one aerial ladder truck, 3 first aid cars, one Medic I cardiopulmonary van, one rescue salvage van, one auxiliary light plant (trailer mounted) and 4 sedans.

MANUFACTURING EMPLOYMENT: There are 70 manufacturing firms in the community.

TYPICAL INDUSTRIAL WAGE RATES:

Skilled personnel	\$5.00-8.50	Clerical personnel	\$2.00-5.00
Semi-Skilled personnel	3.00-5.00	Unskilled personnel	2.50-4.50

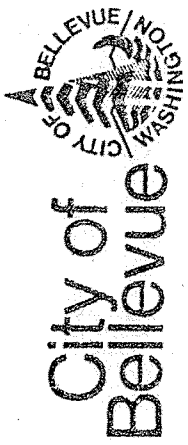
CITY OF BELLEVUE - GENERAL INFORMATION (Continued)

ADDITIONAL COMMENTS: Face of community is changing with increases notable in office buildings and shopping centers. Growth in residential development continues.

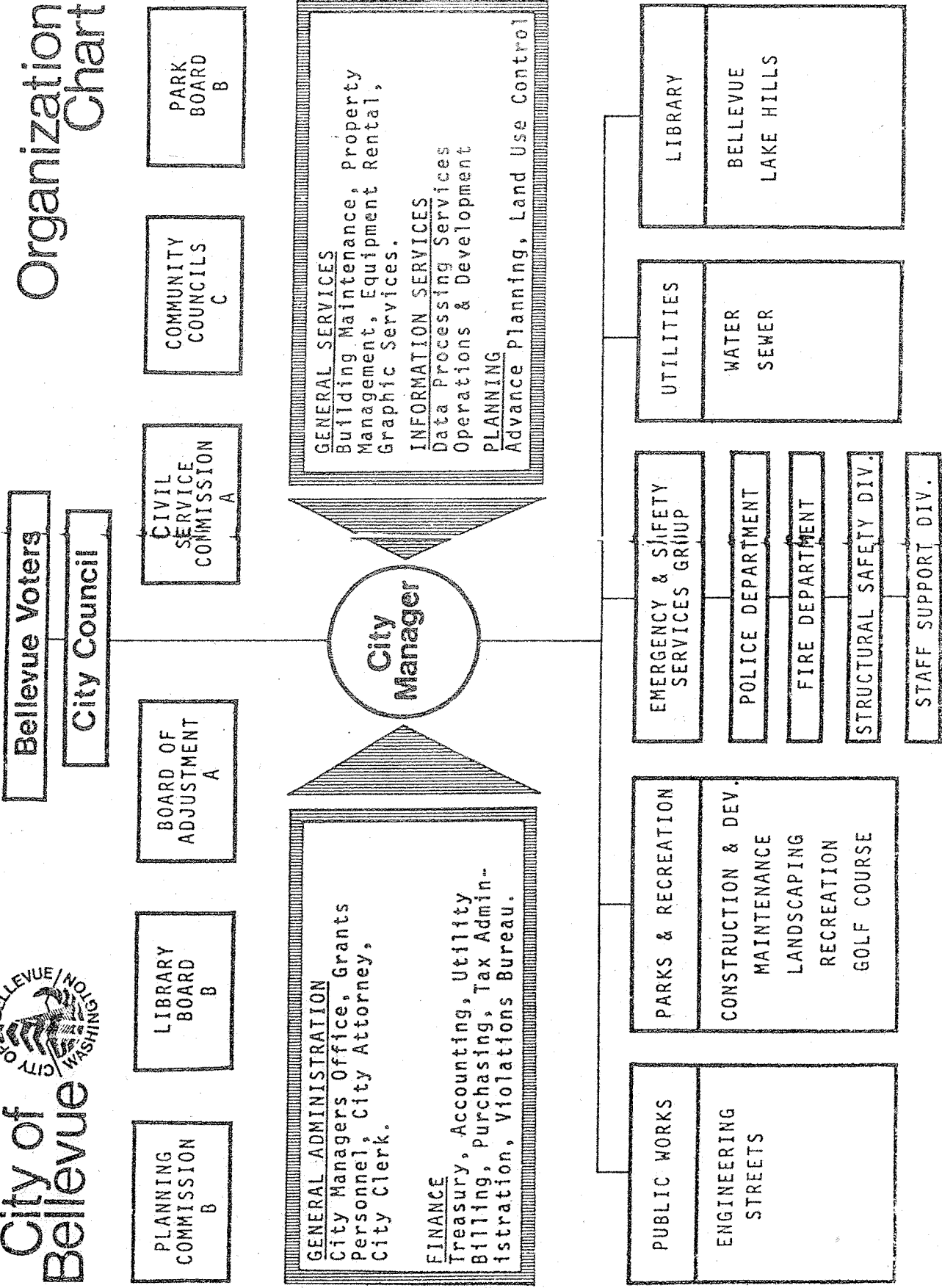
LOCAL NEWSPAPER: Bellevue American publishes weekly, with a paid circulation of 18,400 and a shoppers' edition circulation of 44,400.

RADIO BROADCASTING STATION: Bellevue Eastside Radio, Ltd. (KZAM)  
1540 DCS-AM, 92.5 MCS-FM.





# City of Bellevue Organization Chart



STAFF SUPPORT DEPARTMENTS APPOINTED BY CITY MANAGER - A  
 LINE OPERATIONS APPOINTED BY MAYOR WITH COUNCIL CONSENT - B  
 ELECTED BY COMMUNITY - C

CITY OF BELLEVUE

PUBLIC OFFICIALS

1974

COUNCIL:

Mayor Richard M. Foreman

COUNCILMEN:

Kenneth A. Cole  
Thomas J. Kraft  
Joseph L. McDonald  
Nancy Rising  
Gary Zimmerman  
Milford Vanik

CITY MANAGER:

L. Joe Miller

ASSISTANTS:

Richard Cushing  
Cabot Dow

CITY ATTORNEY:

Lee Kraft

JUDGES:

Melvin Love  
Anthony Wartnik

CITY CLERK:

Patricia K. Weber

CIVIL SERVICE COMMISSION:

LaVerne Hall  
John Shaw  
Sister Bunny Flick  
John Denney  
Paul Hosoda

CITY TREASURER:

Harry Wong

FIRE CHIEF:

Daniel L. Sterling

FINANCE DIRECTOR:

Richard L. Saunders

GENERAL SERVICES DIRECTOR:

Walter R. Shigley

PARK DIRECTOR:

Siegfried Semerau

PERSONNEL DIRECTOR:

Bob Carter

PLANNING DIRECTOR:

Jim Smith

PUBLIC OFFICIALS (Continued)

POLICE CHIEF:

Nicholas Giardina

PUBLIC WORKS DIRECTOR:

Ron Kuchenreuther

STREET DEPARTMENT:

Bruce Watson

UTILITIES DIRECTOR:

John Tennant

INFORMATION SERVICES D.P.:

Robert F. Parks

PHOTOGRAPHER:

Frank A. Anderson

PURCHASING AGENT:

Earle Stuard

BELLEVUE POLICE DEPARTMENT PERSONNEL OVERVIEW

1974

1. AGE DISTRIBUTION OF COMMISSIONED PERSONNEL

<u>AGE</u>	<u>NUMBER OF OFFICERS</u>
21-25	15
26-30	32
31-35	24
36-40	7
41 & Over	4
TOTAL COMMISSIONED PERSONNEL	<u>82</u>
MEAN AGE	<u>30.2</u>

2. DISTRIBUTION OF COMMISSIONED PERSONNEL BY EDUCATION

<u>EDUCATION</u>	<u>NUMBER OF OFFICERS</u>
HIGH SCHOOL	82
1 YEAR COLLEGE	13
2 YEAR COLLEGE	21
3 YEAR COLLEGE	20
4 YEAR COLLEGE	23
GRAD. SCHOOL	3
MASTERS	3
MEAN YEARS OF COLLEGE COMPLETED	<u>2.70</u>

3. YEARS OF SERVICE OF COMMISSIONED PERSONNEL

<u>YEARS</u>	<u>NUMBER OF OFFICERS</u>
UNDER 1 YEAR	11
1 YEAR	3
2 YEARS	9
3 YEARS	4
4 YEARS	3
5-9 YEARS	40
10-14 YEARS	8
15 & OVER	4
MEAN YEARS OF SERVICE	<u>5.8</u>



POLICE DEPARTMENT PERSONNEL OVERVIEW (Continued)

4. DISTRIBUTION BY RANK AND POSITION

<u>RANK &amp; POSITION</u>	<u>NUMBER OF OFFICERS</u>
CHIEF	1
ASSISTANT CHIEF	2
MAJOR	1
CAPTAIN	6
LIEUTENANT	12
POLICE OFFICERS	60
COMPLAINT COORDINATORS	3
DISPATCHERS	5.5
RECORD CLERKS	13
SECRETARIES	3
IDENTIFICATION	1
PROBATION OFFICERS	3.5
SUPERVISOR	1
PROPERTY CLERK	1

5. DISTRIBUTION OF CIVILIAN AND COMMISSIONED PERSONNEL

<u>CIVILIAN</u>	<u>COMMISSIONED</u>
31	82

6. DISTRIBUTION BY SEX AND RACE OF COMMISSIONED PERSONNEL

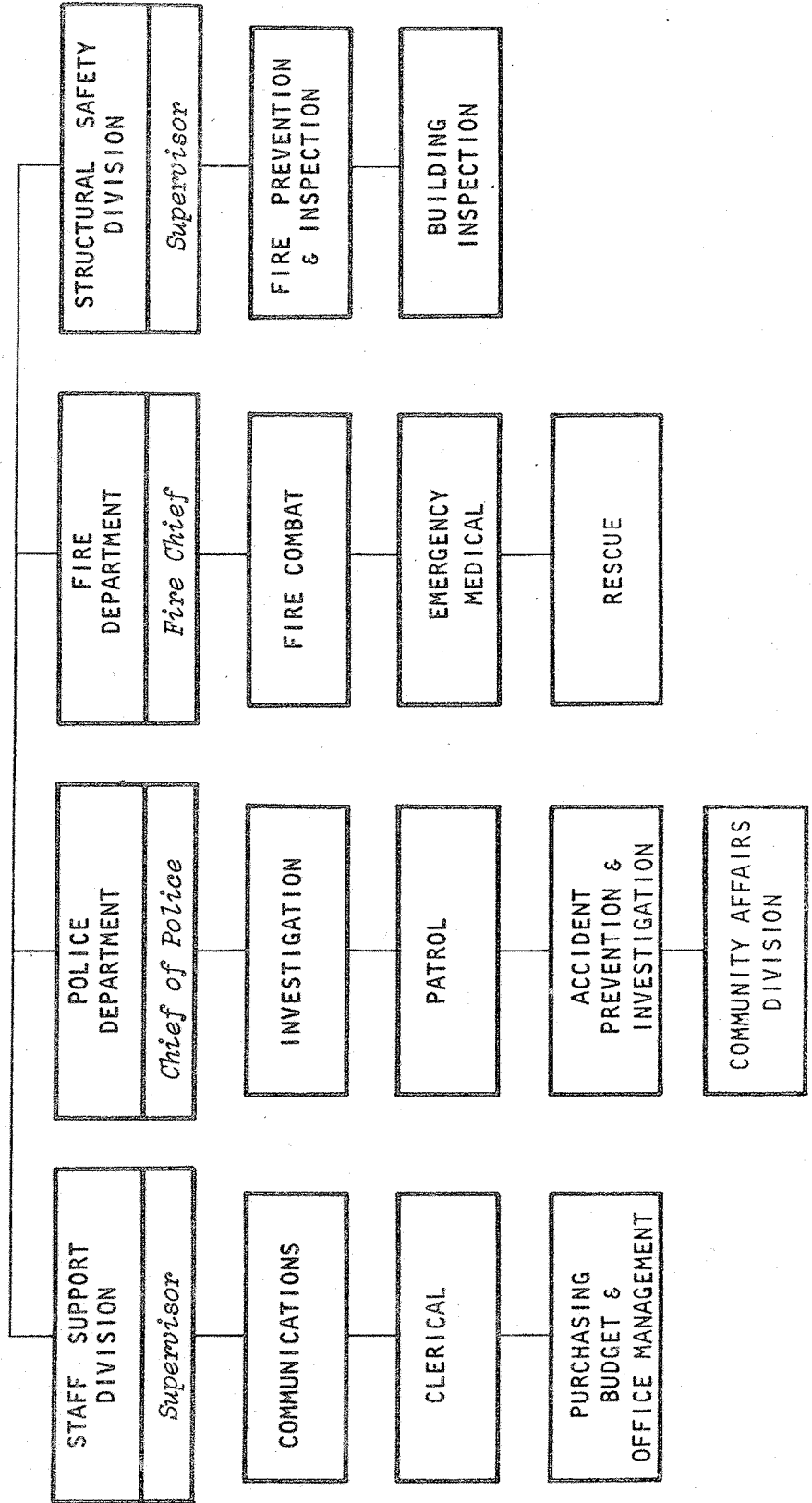
<u>WHITE</u>	<u>BLACK</u>	<u>MALE</u>	<u>FEMALE</u>
80	2	81	1

7. DISTRIBUTION BY ASSIGNMENT OF COMMISSIONED AND CIVILIAN PERSONNEL

<u>ASSIGNMENT</u>	<u>COMMISSIONED</u>	<u>CIVILIAN</u>
ADMINISTRATION	4	1
PATROL	45	
TRAFFIC	13	
PLANNING	2	
COMMUNITY SERVICE	5	7.5
DETECTIVES	13	3
RECORDS		13
DISPATCHERS		5.5
SUPERVISOR		1

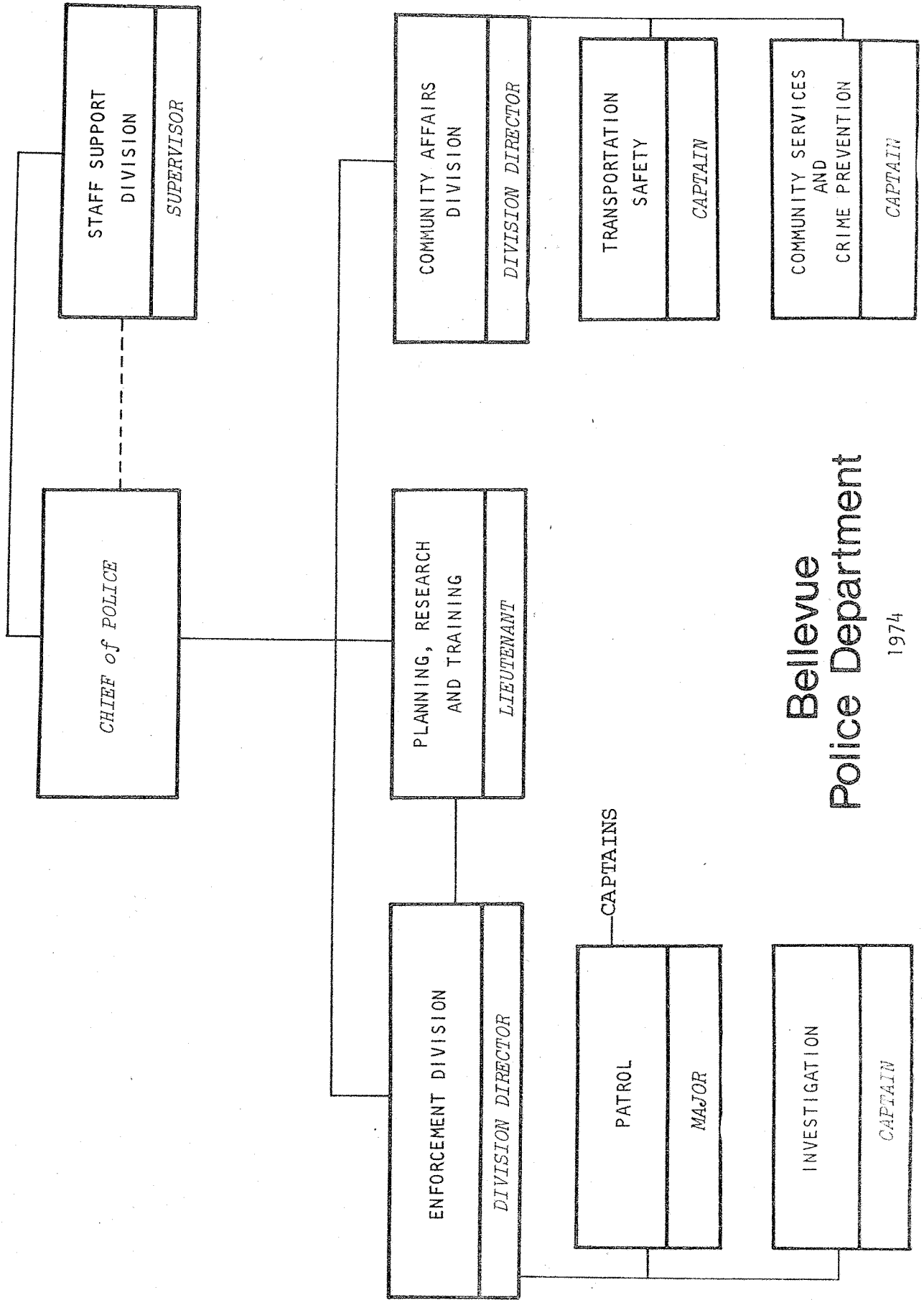
EMERGENCY AND SAFETY  
SERVICES GROUP

BELLEVUE, WASHINGTON



BELLEVUE POLICE DEPARTMENT HISTORY CHART

YEAR	CITY POPULATION	CITY OPERATING BUDGET	POLICE BUDGET	POLICE COST PER CAPITA	NUMBER OF OFFICERS	NUMBER OF OFFICERS PER 1000 POPULATION
1953	5,950	\$58,120	4,170	.69	2	.34
1954	7,658	127,360			6	.78
1955	8,901	277,718.10	23,262	2.61	10	1.12
1956	10,002	357,221.56	21,292	2.31	13	1.3
1957	10,500	424,052.60	106,707	10.16	17	1.62
1958	11,250	466,790.08			21	1.87
1959	12,100	562,138.12	107,064	8.84	18	1.49
1960	12,800	679,583.40	113,271	8.84	20	1.56
1961	13,100	1,086,828.19			24	1.83
1962	14,700	938,086.05	140,470	9.55	22	1.50
1963	14,057	1,486,987.00	159,225	11.32	27	1.92
1964	14,350	1,210,108.00	171,344	11.94	29	2.02
1965	18,900	1,502,051.00	200,649	10.61	27	1.43
1966	20,000	3,264,901.00	230,173	11.50	32	1.60
1967	22,000	2,597,126.00	278,316	12.65	44	2.00
1968	29,500	3,665,722.00	470,292	15.94	49	1.66
1969	43,000	4,670,627.00	624,917	14.53	65	1.51
1970	61,102	6,308,260.00	984,032	16.10	92	1.51
1971	62,900	9,071,336.00	1,170,468	18.60	83	1.32
1972	62,343	10,964,234.00	1,452,550	23.29	72	1.16
1973	63,000	14,219,615.00	1,671,442	26.53	82	1.30
1974	63,940	17,552,334.00	1,888,723	29.56	82	1.28



# Bellevue Police Department

1974



CITY OF BELLEVUE

1974 POLICE BUDGET

<u>FUNCTION</u>	<u>Personal Services</u>	<u>Supplies</u>	<u>Other Services</u>	<u>Capitol</u>	<u>Total</u>
Police Administration	\$ 36,493.	\$ 349.	\$15,969.	\$ 121.	\$ 52,932.
Investigation	193,565.	7,034.	37,361.	2,984.	240,944.
Patrol	617,098.	11,199.	81,374.	9,670.	719,341.
Traffic	191,793.	7,604.	39,080.	24,029.	262,506.
Records	205,824.	6,084.	18,973.	3,440.	234,321.
Training	28,700.	5,035.	5,533.	17,402.	56,670.
Communications	42,890.	247.	14,766.	1,097.	59,000.
Care and Custody of Prisoners	-0-	-0-	4,128.	-0-	4,128.
Community Services Administration	41,446.	996.	25,391.	2,140.	69,943.
Crime Prevention	38,387.	816.	2,905.	-0-	42,108.
Probation and Parole	45,122.	147.	1,339.	329.	46,937.
Family Counseling	-0-	2.	195.	-0-	197.
Disability	98,987.	209.	500.	-0-	99,696.
	<u>\$1,540,305.</u>	<u>\$39,692.</u>	<u>\$247,514.</u>	<u>\$61,212.</u>	<u>\$1,888,723.</u>

## HISTORY OF THE BELLEVUE POLICE DEPARTMENT

The City of Bellevue was chartered on April 1, 1953. On August 1st of 1953 the Bellevue Police Department was organized with one officer, the Chief of Police, G. L. (Jerry) Plowman. The population of the city in 1953 was 6,000. There was no station or equipment available and the Chief was forced to use his home as headquarters. No patrolling was done in the city until September 1953, when a Sergeant was added to the force.

January 1, 1954, marked the first time 24 hour patrolling was possible for the city when two more officers were hired. Although the Police Department had quarters in the City Hall at 100th and Main, night calls were taken by the Chief at his residence. Officers working at night had to drive by the Chief's residence and watch for the porch light which would signal them a call had been received, since the Chief had no radio at his residence. This situation existed for 17 months.

By 1955, the city's population was 8,901 and the department had grown to 10 personnel, thus allowing the station to be in operation for 24 hours for the first time. Also, in 1955 the Juvenile and Crime Prevention division was established. From August 1, 1953 to January 1957, the department's personnel numbered 19 including 3 civilians, with a city population of 10,600.

By 1959, the city had grown to a population of 12,100 with the department's personnel remaining about the same. Harold R. Doss was appointed Chief of Police July of 1959 and resigned in September of 1959. N. J. Giardina

## BELLEVUE POLICE DEPARTMENT HISTORY (Continued)

was appointed to the position of Chief of Police in October of 1959. That same year also marked the first time the Bellevue Police used red lights on top of the patrol cars.

In October of 1960, the Police Department moved to new quarters at 106th NE and NE 8th. By 1962, the population was 14,700 with department personnel numbering twenty-two. Of interest, 2 officers were involved in under-water rescue work for the department, and a statement appeared in the Bellevue American that juvenile delinquency was no great problem in Bellevue.

Nineteen sixty-three marked the first time the Bellevue Police Department had its own radio system which was previously shared by Edmonds, Mountlake Terrace, Medina and Kirkland. In 1964, the City Hall moved to its present location at 116th SE and Main Street. The Police Department at this time, had more room than it needed so part of the space was rented to the Liquor Control Board. The Services Division was also created in 1964.

Even though the Police Department had assigned several officers in prior years to Traffic Enforcement, it wasn't until August of 1965 that the Traffic Division was created with five officers. Also in December of 1965 the department experienced its first homicide; Loren Sundholm was stabbed 17 times and left at Swaylocken Park and Lake Washington Boulevard SE. The case was never solved.

## BELLEVUE POLICE DEPARTMENT HISTORY (Continued)

The city had experienced continuing growth since it was organized. By 1968 the population level was at 30,000 with a city size of 17 square miles. The Police Department at this time had forty nine personnel. The pay incentive program for officers who attended college was also instituted in 1968.

By 1970, the city through annexations, grew to the fourth largest city in the State of Washington, with a population of 61,339 and 26.4 square miles in size. The Police Department strength at this time was at 92 personnel.

The Police Department in 1971, seeing the need for some specialized enforcement in certain areas, formed the Vice and Narcotics Detail along with the Harbor Patrol. That year also marked the first year the department employed an Identification and Lab technician. The Division of Staff and Inspections was also created in 1971.

The Police Department in 1973 had grown to a total strength of 106, including 27 civilian personnel. The city had also grown to a population size of 64,500. In May of 1973, one man was killed and another wounded by the Bellevue Sniper. The Sniper was apprehended in August and later convicted of the killing. Of note, this incident was submitted to and later appeared on the television show Police Story.

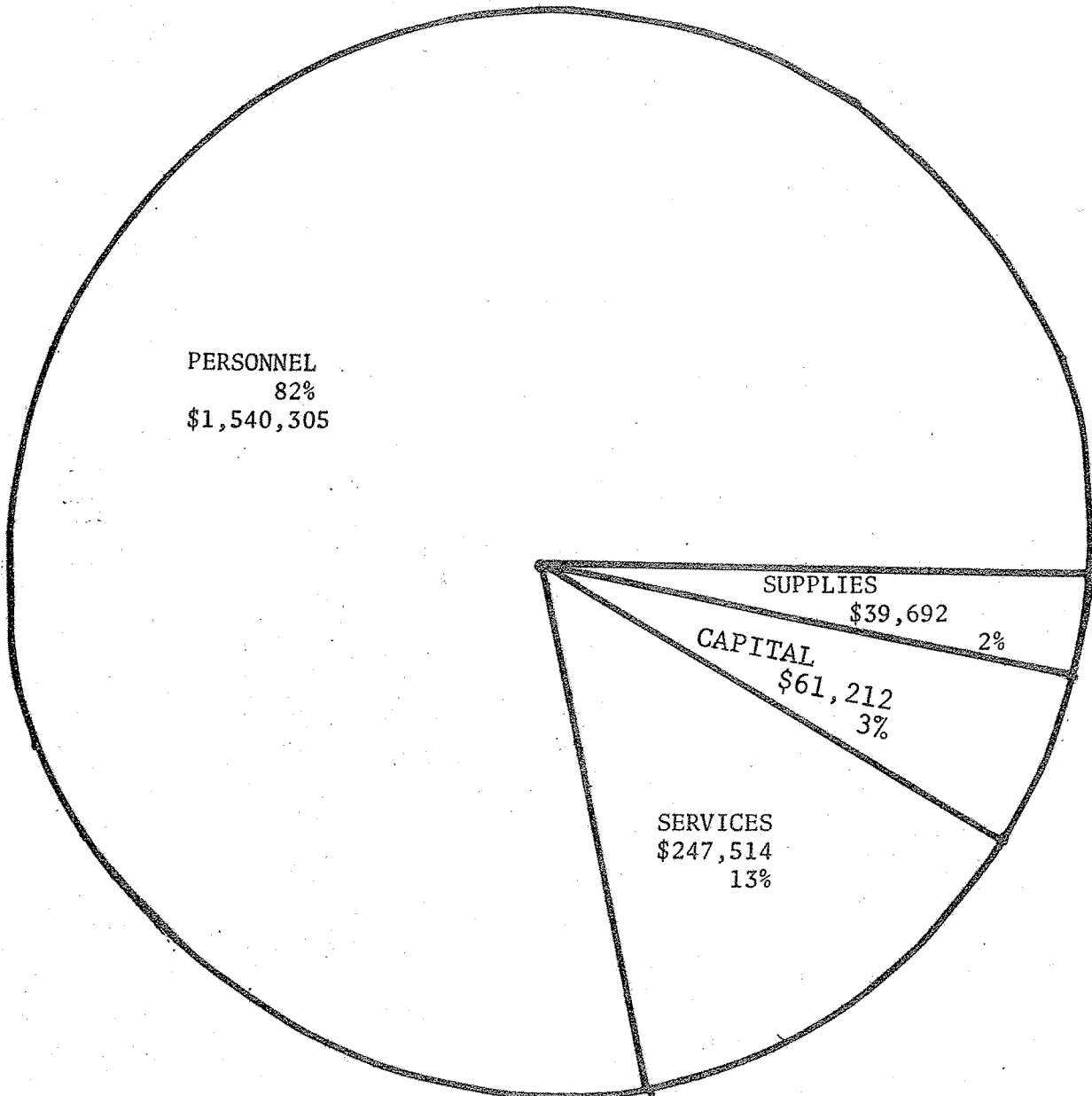


BELLEVUE POLICE DEPARTMENT HISTORY (Continued)

The Police Department in 1975 stands at a total strength of 113 personnel, 31 of which are civilian. In June of 1975, the Police Department entered a new phase of policing called Team Policing, in which officers will be working more closely with the community than in the past. D. P. Van Blaricom was appointed to the position of Chief of Police in February of 1975 after the retirement of N. J. Giardina, who had been Chief for 16 years.

# BUDGET OVERVIEW

1974

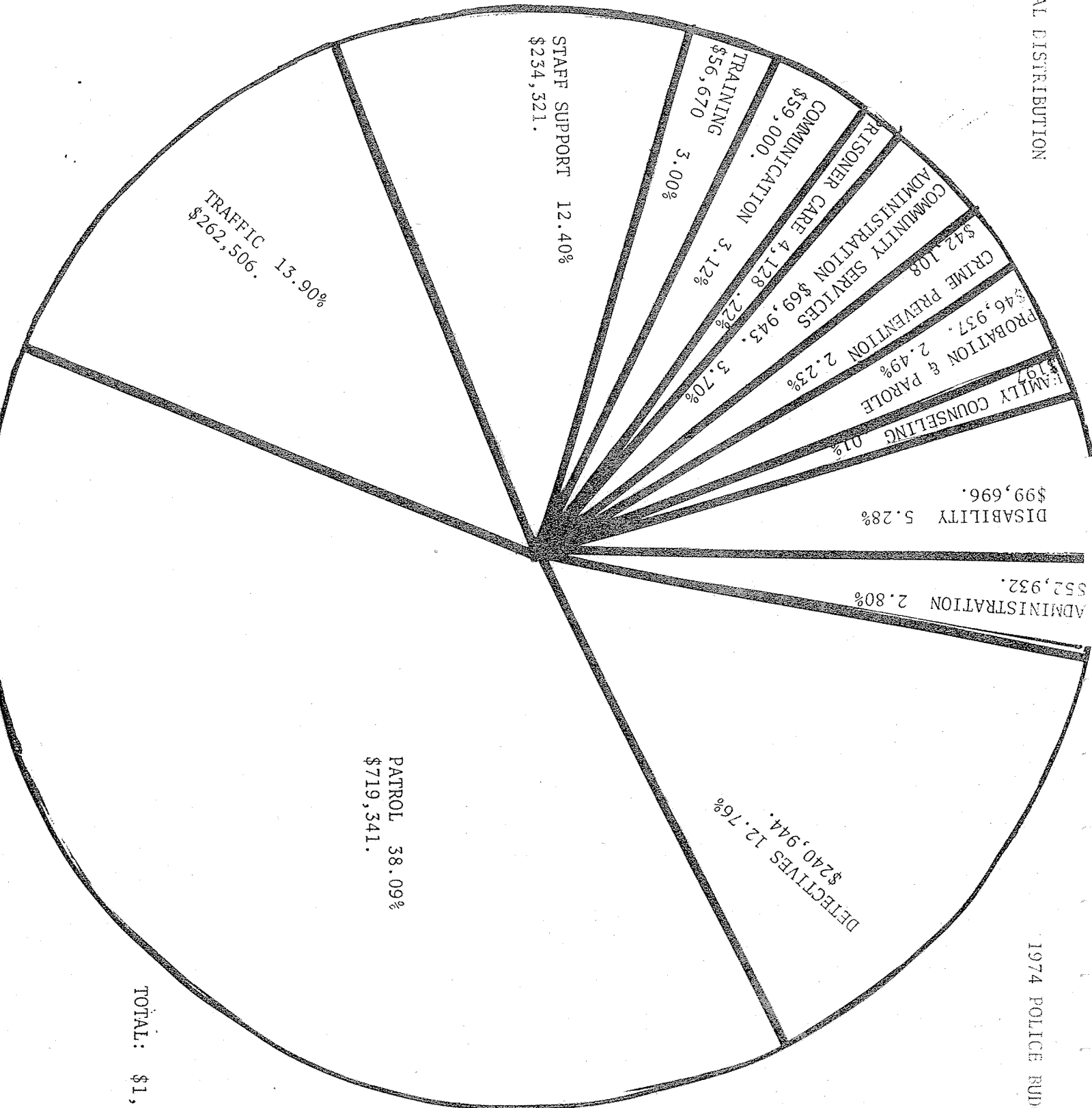


TOTAL 1974 BUDGET

\$1,888,723

FUNCTIONAL DISTRIBUTION

1974 POLICE BUDGET



TOTAL: \$1,888,723.

