

**BELLEVUE
POLICE DEPARTMENT
BELLEVUE, WASHINGTON**

1968

ANNUAL REPORT

BELLEVUE
POLICE DEPARTMENT

ANNUAL REPORT
FOR THE YEAR
1968



N. J. GIARDINA
CHIEF OF POLICE

Law Enforcement Code of Ethics

As a Law Enforcement Officer, my fundamental duty is to serve mankind; to safeguard lives and property; to protect the innocent against deception, the weak against oppression or intimidation, and the peaceful against violence or disorder; and to respect the Constitutional rights of all men to liberty, equality and justice.

I will keep my private life unsullied as an example to all; maintain courageous calm in the face of danger, scorn, or ridicule; develop self-restraint; and be constantly mindful of the welfare of others. Honest in thought and deed in both my personal and official life, I will be exemplary in obeying the laws of the land and the regulations of my department. Whatever I see or hear of a confidential nature or that is confided to me in my official capacity will be kept ever secret unless revelation is necessary in the performance of my duty.

I will never act officiously or permit personal feelings, prejudices, animosities or friendships to influence my decisions. With no compromise for crime and with relentless prosecution of criminals, I will enforce the law courteously and appropriately without fear or favor, malice or ill will, never employing unnecessary force or violence and never accepting gratuities.

I recognize the badge of my office as a symbol of public faith, and I accept it as a public trust to be held so long as I am true to the ethics of the police service. I will constantly strive to achieve these objectives and ideals, dedicating myself before God to my chosen profession . . . law enforcement.

TABLE OF CONTENTS

City of Bellevue Public Officials	Page 1
City of Bellevue General Information (City of Bellevue Map)	Page 2

SECTION I

DEPARTMENT ORGANIZATION AND PERSONNEL

(Chief's Message)	
(Organization Chart)	
Salary Structure - Personnel Strength	Page 3 - 4
College Accreditation	Page 5 - 8
(Department Personnel Photograph)	
Personnel by Position	Page 9 - 11
Personnel Changes	Page 12
(Assistant Chief of Police)	
(Patrol Division)	
(Patrol Division Photograph)	
(Traffic Division)	
(Traffic Division Photograph)	
(Detective Division)	
(Detective Division Photograph)	
(Services Division)	
(Services Division Photograph)	

TABLE OF CONTENTS (CONT)

SECTION II

STATISTICAL INFORMATION

(Budget Allowance)	
Complaints - Arrests	Page 13 - 19
(Complaint Zone Map)	
Complaint Values	Page 20
Complaints by Zone	Page 20
Complaints by Month	Page 21
Complaints by Day of Week	Page 21
Complaints by Hour of Day	Page 21 - 22
Complaints Included	Page 23
Arrests by Month	Page 24
Arrests by Area of Residence	Page 24
Arrests by Type	Page 25
Arrests by Police Disposition	Page 25
(Complaints - Arrests Graph)	
All Accidents	Page 26
Violations Causing Accidents	Page 26
Accident Values	Page 26
Accidents by Month	Page 27
Accidents by Day of Week	Page 27
Accidents by Hour of Day	Page 27 - 28

TABLE OF CONTENTS (CONT)

Enforcement Action Taken	Page 29
Citations by Month	Page 29
Citations by Day of Week	Page 30
Citations by Hour of Day	Page 30
(Accidents - Citations Graph)	
Miscellaneous Activity	Page 31
Man Hours Distribution	Page 32 - 33
Vehicle Operation	Page 34 - 35

CITY OF BELLEVUE

PUBLIC OFFICIALS

COUNCIL:

Kenneth A. Cole - Mayor

Clarence F. Wilde

Kenneth E. Gates

Robert J. Meagher

William H. Biggs

Charles H. Simonson

Robert J. Mulloy

CITY MANAGER:

L. Joe Miller

JUDGE:

Melvin V. Love - Bellevue District Justice

CIVIL SERVICE COMMISSION:

John D. Shaw RAdm (ret) - Chairman

Arthur C. Evered

John F. Doorish

Ellen B. Swenson - Secretary

CITY OF BELLEVUE
GENERAL INFORMATION

INCORPORATED:

March 31, 1953

GOVERNMENT:

Council - Manager

LOCATION:

On the east side of Lake Washington directly across from the City of Seattle to which it is connected by two floating bridges.

AREA:

1967 - 17.0 square miles with 139 miles of public streets

1968 - 17.0 square miles with 146 miles of public streets

POPULATION:

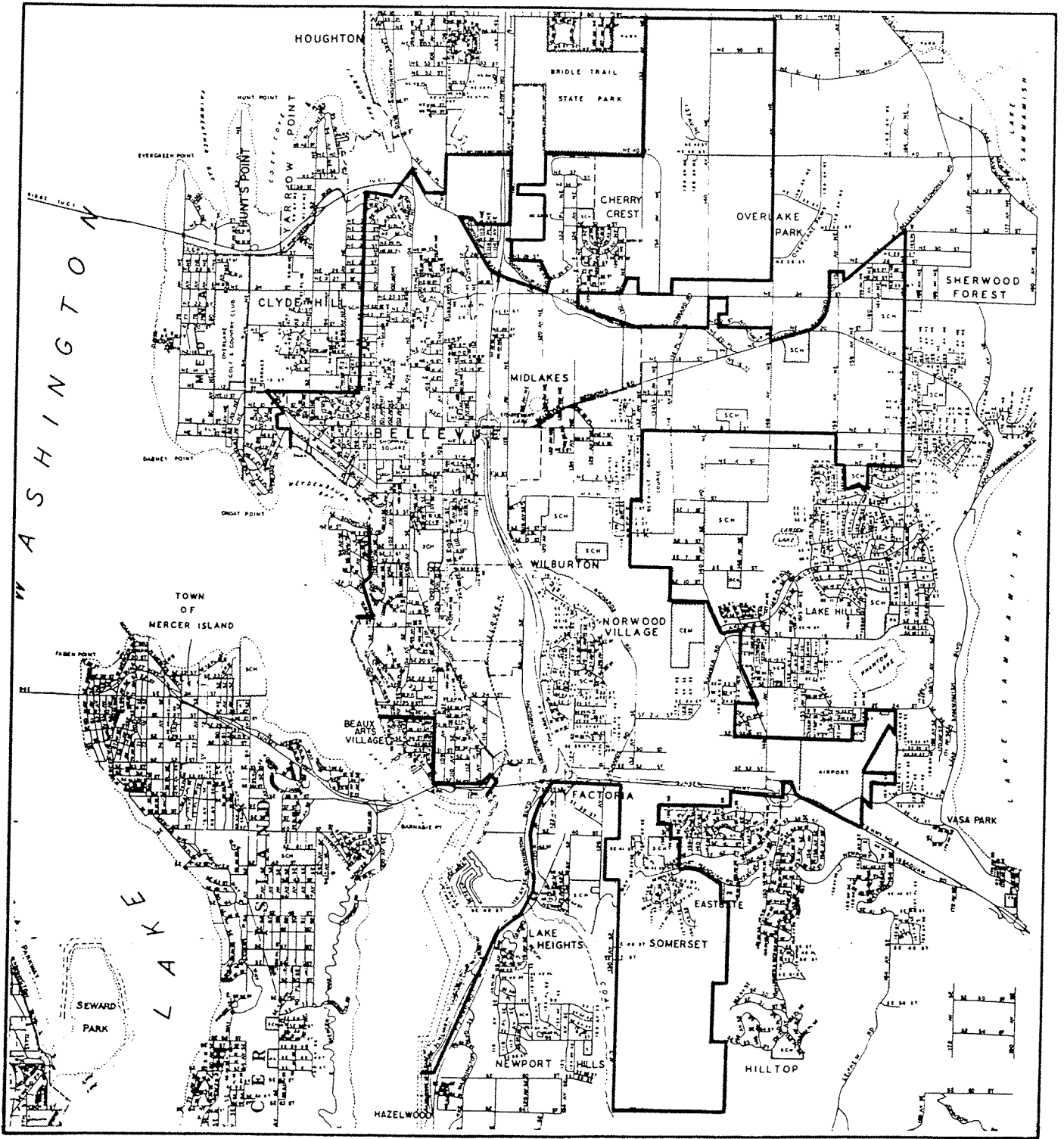
1967 - 26,653

1968 - 30,000

CHARACTER:

The City of Bellevue is the rapidly expanding center of business and residential development on the suburban "East Side" of metropolitan Seattle.

CITY OF BELLEVUE



SECTION I

DEPARTMENT ORGANIZATION
AND
PERSONNEL

CHIEF'S
MESSAGE



Mr. L. Joe Miller, City Manager
City of Bellevue, Washington

Dear Mr. Miller:

Submitted herewith is the 1968 Annual Report of the Bellevue Police Department.

During this past year, we have continued to experience that accelerated growth which has come to characterize our operational requirements.

As the City grows, so also grows our scope of responsibility, both in population and geographically. This, of course, necessitates increases in personnel but there is much more to placing a Patrolman "on the street", than just hiring a man. First, we must locate men who meet the high standards demanded from modern Police Service and although we do manage to recruit them, they are not to be found in abundance. Next, we must train them and this involves eight weeks of intensive Academy instruction to provide the minimum basic knowledge necessary for the complex duties they are expected to perform. Finally, they must accumulate a level of experience which will enable them to confidently handle any situation that might confront them and this simply takes time. These practical considerations, as well as others

too extensive to enumerate, mean that a significant delay may be expected between the time that personnel increases are authorized and the personnel are actually engaged in effective Police Service.

With the continued rapid growth prospects for the foreseeable future, we will be engaged in a literally constant program of expansion and it now becomes our primary task to accomplish such expansion without compromising either the effectiveness or the quality of our operation in the process. The key to professional Police Service is good personnel and we intend to recruit, train and retain Officers of whom the City will be proud.

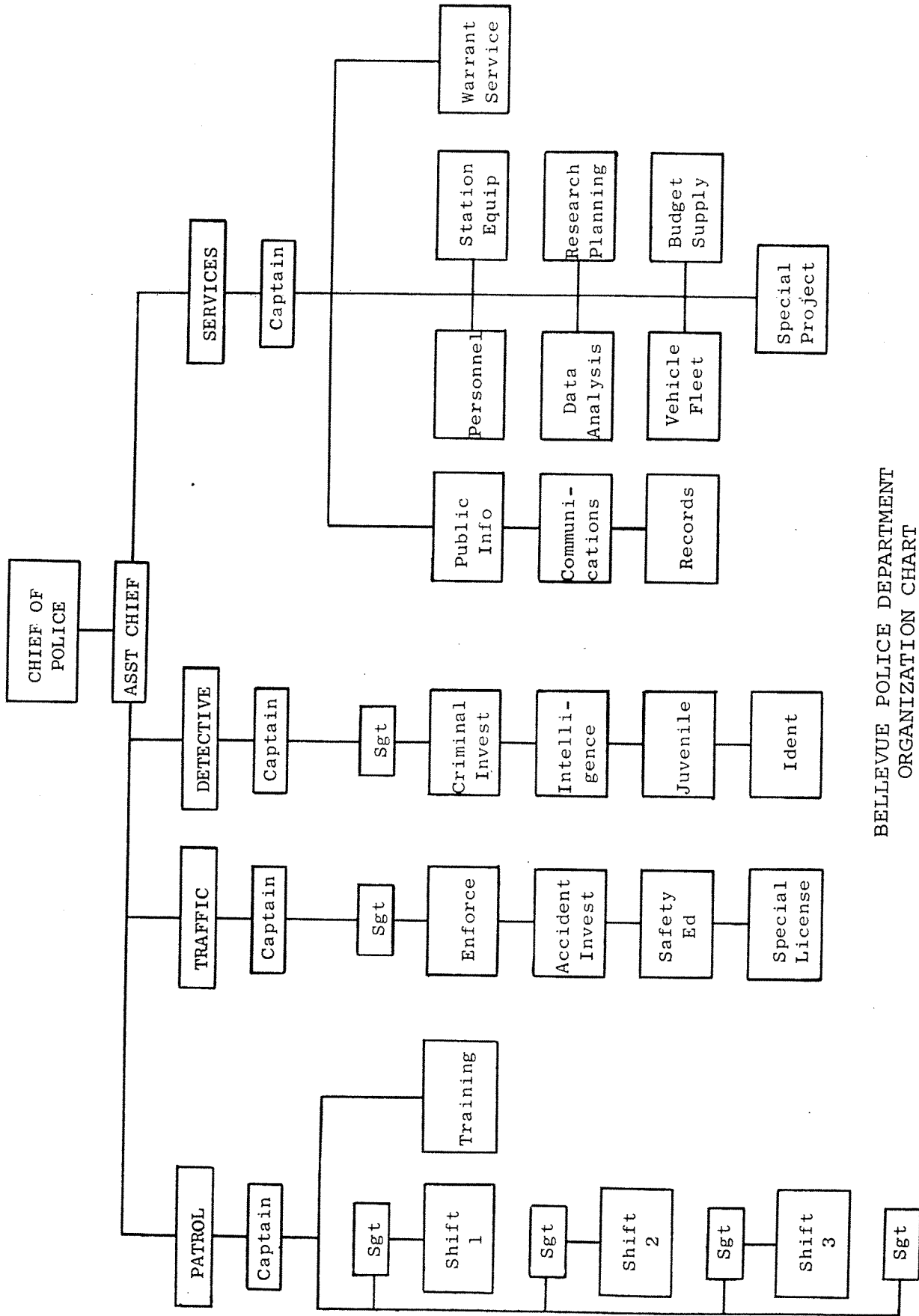
Fortunately, the City Council and the City Manager have understood the problems, which we face together, in serving the citizens of our community and they have consistently provided the resources, which we need to fulfill our important responsibilities.

As always, the Bellevue Police Department will continue to operate in purposeful dedication to the protection of the lives, rights and property of the citizens of Bellevue and I wish to commend the members of my staff for their unselfish pursuit of this goal.

Respectfully submitted,

A handwritten signature in cursive script, appearing to read "N.J. Giardina".

N.J. Giardina, Chief of Police



BELLEVUE POLICE DEPARTMENT
ORGANIZATION CHART

SALARY STRUCTURE - PERSONNEL STRENGTH

1968 SCHEDULE

Position	Step A	Step B	Step C	Step D	Step E	Number
Chief of Police			1050	1075		1
Assistant Chief			950	975		1
Captain			850	900		4
Sergeant			775	800		6
Patrolman *	650	675	700	725		29
Clerk I	422	443	465	488	512	4
Clerk II	402	422	443	465	488	3
Typist (Civilian)	364	383	402	422	443	1
Total Personnel						49

* Detective allowance of 3 % additional

* Motorcycle allowance of \$ 15. additional

1969 SCHEDULE:

Position	Step A	Step B	Step C	Step D	Step E	Number
Chief of Police	-	-	1103	1129	-	1
Assistant Chief	-	-	-	1054	-	1
Captain	-	-	987	1013	-	4
Lieutenant	-	-	883	935	-	3
Sergeant	-	-	814	840	-	6

SALARY STRUCTURE - PERSONNEL STRENGTH (CONT)

1969 SCHEDULE (CONT:

Position	Step A	Step B	Step C	Step D	Step E	Number
Patrolman *	683	709	735	761		40
Clerk I	443	465	488	512	538	3
Clerk II	422	443	465	488	512	4
Typist (Civilian)	383	402	422	443	465	2
Total Personnel						64

* Detective allowance of 3 % additional

* Motorcycle rider allowance of \$ 15 additional

COLLEGE ACCREDITATION

College accreditation was officially obtained for the Bellevue Police Academy and all students who successfully complete the course of instruction with a 2.5 accumulated grade point average, receive 15 college credits applicable to an Associate Law Enforcement degree. In addition, the first aid portion of the training is a registered Health Education 292 course which earns another 3 college credits, giving the graduate a total of 18 credits towards his college education. These credits are applicable at the conveniently located Bellevue Community College, where a Law Enforcement program has been established that will award an Associate degree to in-service personnel who accumulate 94 credits in a specified course of instruction for Police Officers.

EDUCATION INCENTIVES:

A two point program was approved by the Bellevue City Council and the Bellevue Civil Service Commission which provides salary increases above base pay for specified levels of college education and also requires such education for promotion. This program, as authorized, is as follows:

Approved fields of study are limited to only those which have a direct relationship to Police Service and these are:

1. Police Science (Law Enforcement)
2. Political Science
3. Sociology

Reduced credit will be given however, for all other fields of study, since any college training has an inherent value for improving an individual's relative worth.

In consideration of the above, six levels of college attainment will be recognized for the purpose of implementing this plan. These are:

Education "1 A" -

Accumulation of 45 college credits (quarter system) towards an Associate degree or Bachelor degree in an approved field of study.

Education "1 B" -

Attainment of an Associate degree in an approved field of study or accumulation of 90 college credits (quarter system) towards a Bachelor degree in an approved field of study.

EDUCATION INCENTIVES (CONT)

Education "1 C" -

Attainment of a Bachelor degree in an approved field of study.

Education "2 A" -

Accumulation of 45 college credits (quarter system) towards an Associate degree or Bachelor degree in a field of study other than an approved field of study.

Education "2 B" -

Attainment of an Associate degree in a field of study other than an approved field of study or accumulation of 90 college credits (quarter system) towards a Bachelor degree in a field of study other than an approved field of study.

Education "2 C" -

Attainment of a Bachelor degree in a field of study other than an approved field of study.

For purposes of promotional qualification, after January 1, 1968, all subsequently employed personnel will be required to attain a specified level of college education, in addition to a specified level of experience, before being qualified to apply for promotional examinations. All personnel who have been hired prior to this date however, will continue to qualify for promotional examination by attainment of only the specified level of experience but can qualify sooner, if they attain the desired level of college education.

The pre-promotional qualifications are:

To Sergeant -

Hired prior to January 1, 1968:

3 years service as a Patrolman / or;
2 years service as a Patrolman and
education "1 A" / or "2 B".

Hired after January 1, 1968:

3 years service as a Patrolman and
education "1 A" / or "2 B".

To Captain -

Hired prior to January 1, 1968:

3 years service as a Sergeant / or;
2 years service as a Sergeant and
education "1 B" / or "2 C".

EDUCATION INCENTIVES (CONT)

Hired after January 1, 1968:

3 years service as a Sergeant and
education "1 B / or "2 C".

To Assistant Chief -

Hired prior to January 1, 1968:

1 year as a Captain.

Hired after January 1, 1968:

1 year as a Captain and education
"1 C".

It is anticipated that at some future time, additional ranks will be necessitated by Department expansion (Lieutenant, etc) and these will require their own qualifications for promotion, which may require adjustment in the presently established ranks, as listed above.

In addition to promotional opportunity, this plan will provide encouragement for continued college education by all in-service personnel by awarding salary increases commensurate with individual effort. The plan will also aid in the attraction of superior applicants who have demonstrated pre-service college achievements.

Salary increases relative to this plan will be designated as "Incentive Pay" and are:

Education "1 A" -

2½ % above base salary

Education "1 B" -

5 % above base salary

Education "1 C" -

8 % above base salary

Education "2 A" -

1½ % above base salary

Education "2 B" -

3 % above base salary

Education "2 C" -

5 % above base salary

EDUCATION INCENTIVES (CONT)

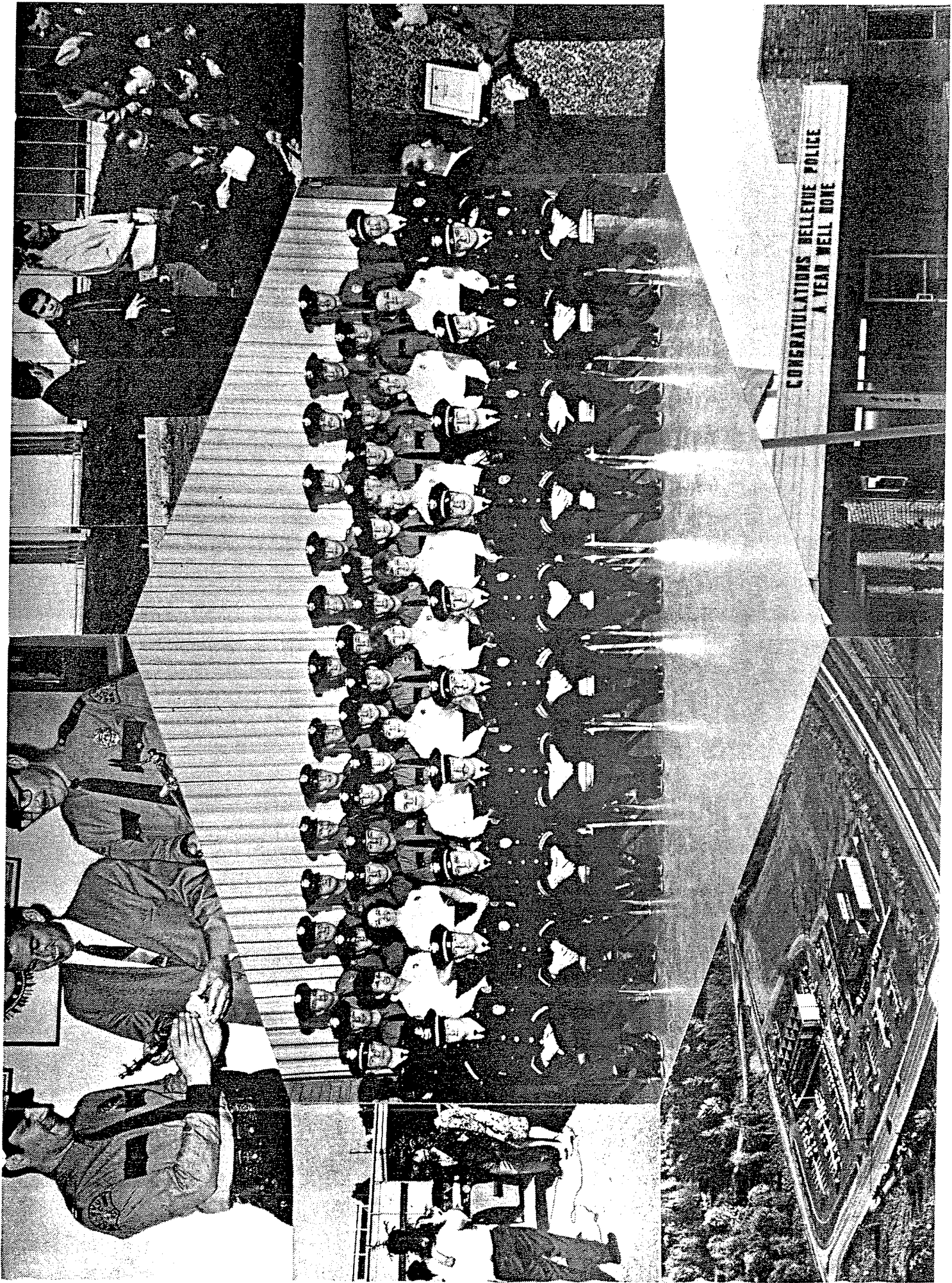
No employee hired after January 1, 1968 shall receive incentive pay until after satisfactory completion of one year service, but thereafter shall receive incentive pay as per schedule.

Incentive pay shall be applicable to all positions and ranks in the Police Department, as authorized by the City Council.

TUITION REIMBURSEMENT:

Tuition is reimbursed in full to each individual Officer upon successful completion, with a grade of C or better, of any college accredited course that is applicable to a Law Enforcement degree program.

The foregoing is intended as a progressive approach to improvement of intellectual standards for Police personnel and may be expected to provide a long range guarantee to the City of Bellevue that the highest quality men and women will be attracted, trained and retained in the Service of the Bellevue Police Department.



PERSONNEL BY POSITION

NAME	EMPLOYMENT DATE	POSITION
N.J. Giardina	1/1/55	Chief
G.C. Whitman	9/16/53	Asst. Chief
H.F. Corkrey	12/1/55	Captain
D.P. Van Blaricom	12/6/56	Captain
C.A. Meyer	1/1/57	Captain
R.F. Davis	8/5/58	Captain
R.H. Wittauer	10/14/57	Sergeant
F.D. Williams	7/16/63	Sergeant
J.B. Pettersen	10/16/64	Sergeant
D.J. Laphorne	10/1/61	Sergeant
J.E. Hassinger	1/11/65	Sergeant
G.E. Arcand	4/1/65	Sergeant
G.A. George	8/1/60	Patrolman
C.D. Hein	8/16/64	Patrolman
D.E. Hansen	5/16/65	Patrolman
D. Smith	1/1/66	Patrolman
R.A. Woods	9/1/66	Patrolman
R.A. Maier	10/16/66	Patrolman
P.H. Olson	2/16/67	Patrolman
R.C. Gleason	2/16/67	Patrolman

PERSONNEL BY POSITION (CONT)

NAME	EMPLOYMENT DATE	POSITION
R.S. Kingsbury	4/1/67	Patrolman
*C.C.Parker	6/16/67	Patrolman
C.A. Turi	7/16/67	Patrolman
J.R. Little	7/16/67	Patrolman
H.J. Nordyke	7/16/67	Patrolman
R.W. Guley	8/16/67	Patrolman
J.J. Larkin	8/16/67	Patrolman
D.E. Morrison	8/16/67	Patrolman
R.D. Stover	10/16/67	Patrolman
R.A. Pierson	11/16/67	Patrolman
W.L. Potter	11/16/67	Patrolman
J.J. Brennan	12/1/67	Patrolman
C.S. German	12/1/67	Patrolman
J.C. Kellum	12/29/67	Patrolman
G.D. Banry	1/1/68	Patrolman
I. Wallace	3/15/68	Patrolman
A.R. Kasnick	3/15/68	Patrolman
S.E. Fay	9/3/68	Patrolman
T.C. Johnson	10/1/68	Patrolman
W.G. Ellis	10/1/68	Patrolman
G. A. Malmstrom	10/16/68	Patrolman
R.L. Reis	10/16/68	Patrolman
*Military Leave since 1/26/68		

PERSONNEL BY POSITION (CONT)

NAME	EMPLOYMENT DATE	POSITION
F.M. Allen	8/15/57	Clerk I
C.T. Steere	12/3/57	Clerk I
L.M. Beard	2/1/61	Clerk I
C. Anderson	11/1/67	Clerk II
S.G. Hamilton	10/16/68	Clerk II
L.K. Norman	11/16/68	Clerk II
S. Holcomb	12/16/68	Clerk II
L.J. Halvorson	6/1/68	Typist

PERSONNEL CHANGES

PROMOTIONS:

Sergeant G.E. Arcand from Patrolman	9/1/68
-------------------------------------	--------

NEW PERSONNEL:

Patrolman G.D. Banry	1/1/68
Patrolman W.C. Murray	1/16/68
Patrolman T.J. Hubbell	2/1/68
Clerk II J.M. Christopherson	2/16/68
Clerk II M.C. Boyle	3/3/68
Patrolman I. Wallace	3/16/68
Patrolman A.R. Kasnick	3/16/68
Patrolman R.F. Peterson	4/16/68
Patrolman M.W. O'Reilly	5/16/68
Typist L.J. Halvorson	6/1/68
Clerk II C.L. Bailee	6/24/68
Patrolman S.E. Fay	9/3/68
Patrolman T.C. Johnson	10/1/68
Patrolman W.G. Ellis	10/1/68
Patrolman G.A. Malmstrom	10/16/68
Patrolman R.L. Reis	10/16/68
Clerk II S.G. Hamilton	10/16/68
Clerk II L.K. Norman	11/16/68
Clerk II S. Holcomb	12/16/68

ASSISTANT
CHIEF OF POLICE



The Assistant Chief of Police is primarily responsible for direct aid to the Chief of Police in the administration of the Bellevue Police Department. In accomplishing this function he serves to coordinate the activities of the Patrol, Traffic, Detective and Services Divisions towards achievement of maximum effectiveness.

As a Department representative, he acts as a liaison with other official agencies and is particularly active in the fulfillment of speaking engagements.

In the absence of the Chief of Police, the Assistant Chief of Police acts in that capacity.

J. C. Whitman

J.C. Whitman, Assistant Chief of Police

PATROL
DIVISION

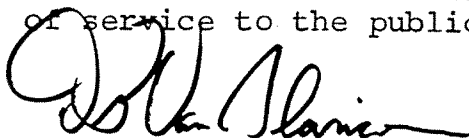


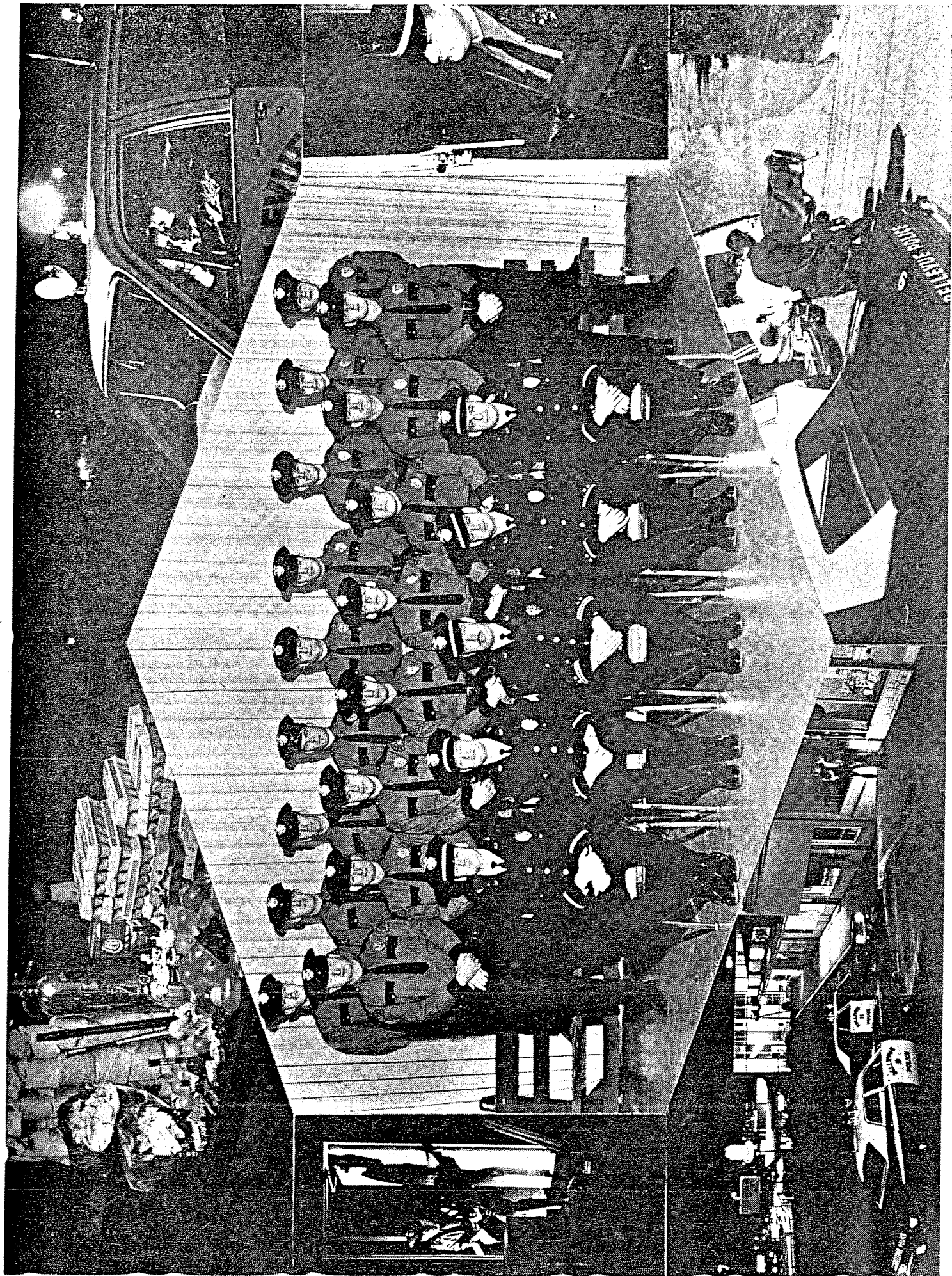
The Patrol Division, largest and oldest Division in the Bellevue Police Department, has the broadly described responsibility of providing a deterrent to violators, investigation of those violations which may occur and all the myriad services related thereto.

As the primary component of the Department operation, it is responsible for twenty-four hour coverage of the City and as such, it is supplemented by the specialist activities of the Traffic, Detective and Services Divisions. Patrol Division personnel operate mobile units in specifically assigned patrol districts, where they are within immediate reach of any emergency call and assume responsibility for all situations requiring Police attention. These may be as varied as response to a burglary in progress, investigation of a traffic accident, search for a lost child or report of a hazardous condition requiring corrective action by another City Department.

Most newly employed Patrolmen are initially assigned to the Patrol Division where they may obtain a wide range of experience in all aspects of Police Service.

The Patrol Division strives to provide a professional level of service to the public whenever and wherever required.


D.P. Van Blaricom, Captain



TRAFFIC
DIVISION



The Traffic Division was created by order of the Chief of Police in August, 1965 to accomodate the increase in traffic activity within the jurisdiction of the Bellevue Police Department, particularly in the category of vehicle accidents.

The Division is responsible for the promotion of traffic safety and strives to accomplish this function by enforcement of accident causing violations, consultation with the Engineering Department on needed improvements in the traffic pattern, participation in the high school driver education programs, assistance with the School Safety Patrol program and talks to various citizen groups. In spite of such efforts, accidents continue to occur and these are investigated to determine causes. The investigation is intended not only to assign liability, but also to discover means by which similar future accidents can be prevented. Prevention of accidents is the primary responsibility of the Division and constitutes its reason for existence.

The Traffic Division maintains an accident records section which indicates areas of need and operational effectiveness so that available resources will be applied where they will gain the most beneficial results.


H.E. Corkrey, Captain

1968

City Population of 30,000

City Budget of \$3,665,722

17.0 sq. miles with 146 miles of public roads

Police Budget of \$476,997.00

49 Personnel

8 Traffic Officers

Equipment

9 Police Cars

2 Traffic Cars

1 1966 Harley-Davidson Motorcycle

1 1968 Harley-Davidson Motorcycle

Personnel

N.J. Giardina, Chief

6 Sergeants

4 Clerk II

G.C. Whitman, Asst. Chief

30 Patrolmen

1 Typist

4 Captains

3 Clerk I

Promotions

Ptln. G.E. Arcand to Sergeant 9-1-68

New Employees

Ptln. G.D. Banry 1-1-68

Clerk II C.L. Bailee 6-24-68

Ptln. W.C. Murray 1-16-68

Ptln. S.E. Fay 9-3-68

Ptln. T.J. Hubbell 2-1-68

Ptln. T.C. Johnson 10-1-68

Clerk II J.M. Christopherson 2-16-68

Ptln. W.G. Ellis 10-1-68

Clerk II M.C. Boyle 3-3-68

Ptln. G.A. Malmstrom 10-16-68

Ptln. I. Wallace 3-16-68

Ptln. R.L. Reis 10-16-68

Ptln. A.R. Kasnick 3-16-68

Clerk II S.G. Hamilton 10-16-68

Ptln. R.F. Peterson 4-16-68

Clerk II L.K. Norman 11-16-68

Ptln. M.W. O'Reilly 5-16-68

Clerk II S. Holcomb 12-16-68

Typist L.J. Halvorson 6-1-68

Traffic Division

971 accidents

743 were officer-investigated

228 were non-investigated citizen's reports

3 fatalities

397 injured

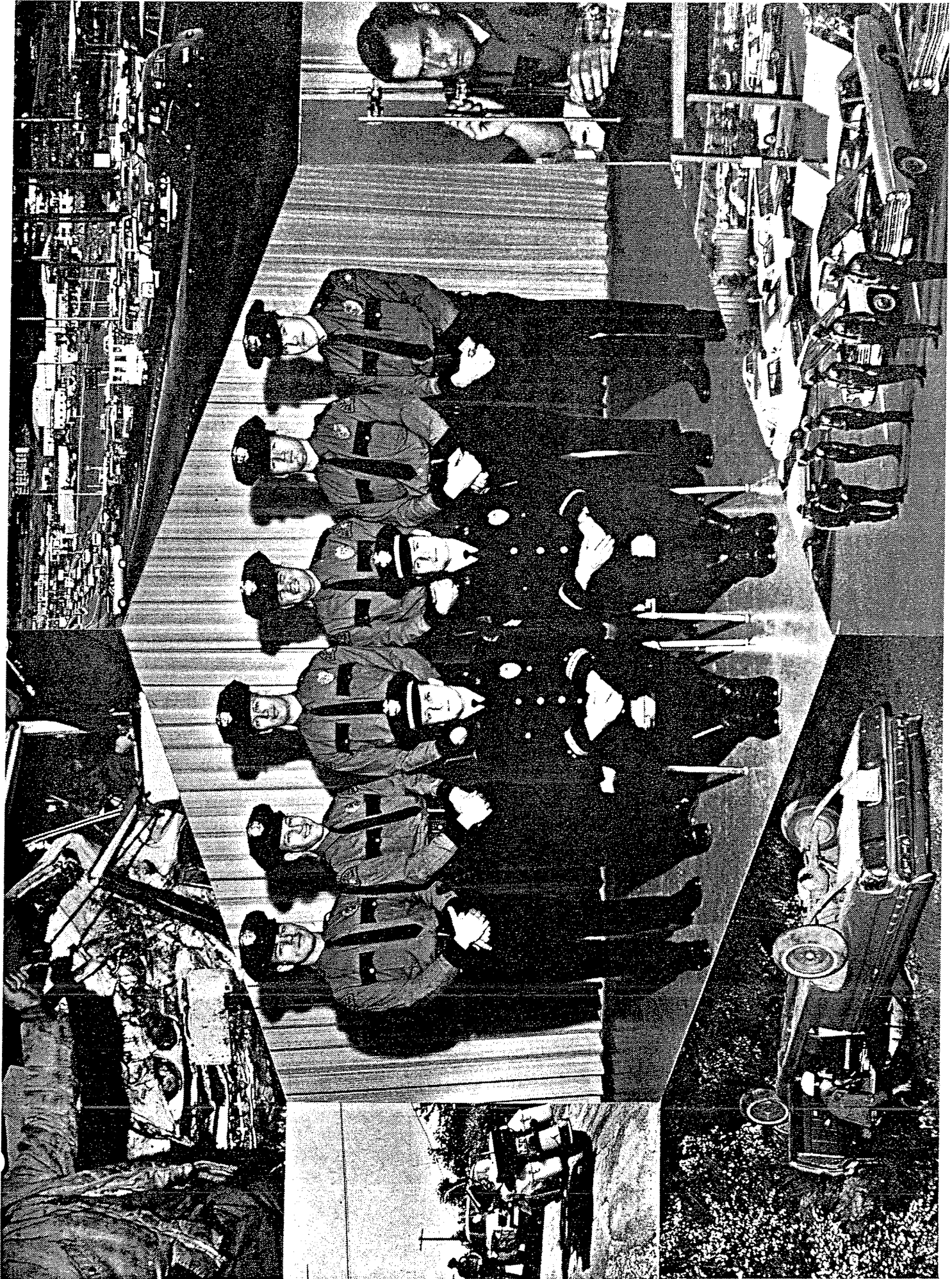
Adult citations - 7375

Juv. citations - 863

Warnings - 14,384

1303 hours worked in accident investigation

8940 hours worked in Traffic Enforcement



DETECTIVE
DIVISION



The Detective Division was established early in the development of the Bellevue Police Department organization and has expanded with the requirements of increased activity in the investigative area of responsibility.

The Division has primary responsibility for three sections and these are: criminal investigation, juvenile and intelligence. Criminal investigation includes the follow up investigation of all felonies and many misdemeanors, which require special attention to effect a disposition. Each must be reviewed, investigated in an effort to identify the person responsible and prepared for prosecution in court. Juvenile includes the review of all complaints involving juvenile suspects to determine the individual circumstances and make a decision on whether there should be a referral to Juvenile Court or reliance upon parental supervision with Police assistance. Intelligence includes the compilation of information on active criminals and their operations so that they can be more effectively investigated.

To fulfill their assigned responsibilities, Division personnel must maintain a close liaison relationship with Police and other official agencies for mutual assistance.

The Detective Division strives to maintain the highest rate of complaint clearance possible.

A handwritten signature in cursive script, appearing to read "C.A. Meyer". The signature is written in dark ink and is positioned above the printed name.

C.A. Meyer, Captain

BELLEVUE POLICE DEPARTMENT
BASIC LAW ENFORCEMENT TRAINING
256 Hours

FEBRUARY 5, THRU MARCH 22, 1968

FIRST WEEK

February 5, 1968 (Monday)

0800 - 1200 (4 hrs.)
Orientation & Questions

Capt. Van Blaricom

1300 - 1500 (2 hrs.)
Firearms Safety

Capt. Van Blaricom

1500 - 1700 (2 hrs.)
Rules & Regulations

Sgt. Williams

February 6, 1968 (Tuesday)

0800 - 1200 (4 hrs.)
History of Law Enforcement

Asst. Chief Whitman

1300 - 1700 (4 hrs.)
First Aid

Mr. Wallbom

February 7, 1968 (Wednesday)

0800 - 1200 (4 hrs.)
Office Procedures

Clerk Beard

1300 - 1700 (4 hrs.)
Dept. Reports & Records

Capt. Davis

February 8, 1968 (Thursday)

0800 - 1200 (4 hrs.)
Physical Combat

Sgt Wittauer

1300 - 1700 (4 hrs.)
First Aid (Cont)

Mr. Wallbom

February 9, 1968 (Friday)

0800 - 1200 (4 hrs.)
Complaint Taking

Capt. Davis

1300 - 1700 (4 hrs.)
Report Writing

Capt. Davis

SECOND WEEK

February 12, 1968 (Monday)

0800 - 1200 (4 hrs.)
Fingerprints

Sgt. Lapthorne

1300 - 1700 (4 hrs.)
Scientific Aids & Photography

Sgt. Lapthorne

February 13, 1968 (Tuesday)

0800 - 1200 (4 hrs.)
Criminal Code

Sgt. Williams

1300 - 1700 (4 hrs.)
First Aid (Cont)

Mr. Wallbom

February 14, 1968 (Wednesday)

0800 - 1200 (4 hrs.)
Preliminary Investigation

Sgt. Lapthorne

1300 - 1700 (4 hrs.)
Preliminary Investigation (Cont)

Sgt. Lapthorne

February 15, 1968 (Thursday)

0800 - 1200 (4 hrs.)
Criminal Code (Cont)

Sgt. Williams

1300 - 1700 (4 hrs.)
First Aid (Cont)

Mr. Wallbom

February 16, 1968 (Friday)

0800 - 1200 (4 hrs.)
Arrest, Search & Seizure

Sgt. Pettersen

1300 - 1700 (4 hrs.)
Arrest, Search & Seizure (Cont)

Sgt. Pettersen

Page Three

THIRD WEEK

February 19, 1968 (Monday)

0800 - 1200 (4 hrs.)
Interrogation

Capt. Meyer

1300 - 1500 (2 hrs.)
Case Preparation

Capt. Meyer

1500 - 1700 (2 hrs.)
Court Testimony

Sgt. Pettersen

February 20, 1968 (Tuesday)

0800 - 1200 (4 hrs.)
Criminal Code (Cont)

Sgt. Williams

1300 - 1700 (4 hrs.)
First Aid (Cont)

Mr. Wallbom

February 21, 1968 (Wednesday)

0800 - 1200 (4 hrs.)
Patrol Procedure

Sgt. Fredrickson

1300 - 1700 (4 hrs.)
Patrol Procedure (Cont)

Sgt. Fredrickson

February 22, 1968 (Thursday)

0800 - 1200 (4 hrs.)
Patrol Procedure (Cont)

Sgt. Fredrickson

1300 - 1700 (4 hrs.)
Patrol Procedure (Cont)

Sgt. Fredrickson

February 23, 1968 (Friday)

2000 - 0400 (8 hrs.)
Patrol Procedure (Cont)

Sgt. Fredrickson

Page Four

FOURTH WEEK

February 26, 1968 (Monday)

0800 - 1200 (4 hrs.)
Court Structure & Criminal Justice Sgt. Pettersen

1300 - 1500 (2 hrs.)
Court Structure & Criminal Justice (Cont) Sgt. Pettersen

1500 - 1700 (2 hrs.)
Public Relations & Civil Rights Chief Giardina

February 27, 1968 (Tuesday)

0800 - 1200 (4 hrs.)
Criminal Code (Cont) Sgt. Williams

1300 - 1700 (4 hrs.)
First Aid (Cont) Mr. Wallbom

February 28, 1968 (Wednesday)

0700 - 0900 (2 hrs.)
K.C. Coroner Autopsy Asst. Chief Whitman

0900 - 1100 (2 hrs.)
K.C. Jail Visit Asst. Chief Whitman

1300 - 1700 (4 hrs.)
K.C. Youth Center Visit Asst. Chief Whitman

February 29, 1968 (Thursday)

0800 - 1200 (4 hrs.)
Physical Combat (Cont) Sgt. Wittauer

1300 - 1700 (4 hrs.)
First Aid (Cont) Mr. Wallbom

March 1, 1968 (Friday)

0800 - 1200 (4 hrs.)
Juvenile Asst. Chief Whitman

1300 - 1700 (4 hrs.)
Juvenile (Cont) Asst. Chief Whitman

FIFTH WEEK

March 4, 1968 (Monday)

0800 - 1200 (4 hrs.)
Riot Drill

Capt. Van Blaricom

1300 - 1700 (4 hrs.)
Riot Drill (Cont)

Capt. Van Blaricom

March 5, 1968 (Tuesday)

0800 - 1200 (4 hrs.)
Physical Combat (Cont)

**GO HOME EARLY
NIGHT BEFORE OR
HAVE S-6 HANDLE**

Sgt. Wittauer

1300 - 1500 (2 hrs.)
First Aid Exam

Mr. Wallbom

1500 - 1700 (2 hrs.)
Traffic Function

Capt. Corkrey

March 6, 1968 (Wednesday)

0800 - 1200 (4 hrs.)
Traffic Code

Capt. Corkrey

1300 - 1700 (4 hrs.)
Emergency Driving

Sgt. Hassinger

March 7, 1968 (Thursday)

0800 - 1200 (4 hrs.)
Traffic Enforcement

Capt. Corkrey

1300 - 1700 (4 hrs.)
Traffic Enforcement (Cont)

Capt. Corkrey

March 8, 1968 (Friday)

0800 - 1200 (4 hrs.)
Accident Investigation

Capt. Corkrey

1300 - 1700 (4 hrs.)
Accident Investigation (Cont)

Capt. Corkrey

SIXTH WEEK

March 11, 1968 (Monday - 1st half of class)

0800 - 1200 (4 hrs.)
Accident Field Problem

Sgt. Hassinger

1300 - 1700 (4 hrs.)
Driver Qualification

Sgt. Hassinger

March 12, 1968 (Tuesday - 2nd half of class)

0800 - 1200 (4 hrs.)
Accident Field Problem (repeat)

Sgt. Hassinger

1300 - 1700 (4 hrs.)
Driver Qualification (repeat)

Sgt. Hassinger

March 13, 1968 (Wednesday)

0800 - 1200 (4 hrs.)
Breathalyzer Operation

Capt. Corkrey

1300 - 1700 (4 hrs.)
Breathalyzer Operation (Cont)

Capt. Corkrey

March 14, 1968 (Thursday - 1st half of class)

0800 - 1200 (4 hrs.)
Firearms Proficiency

Capt. Van Blaricom

1300 - 1700 (4 hrs.)
Firearms Proficiency (Cont)

Capt. Van Blaricom

March 15, 1968 (Friday - 1st half of class)

0800 - 1200 (4 hrs.)
Firearms Proficiency (Cont)

Capt. Van Blaricom

1300 - 1700 (4 hrs.)
Firearms Qualification

Capt. Van Blaricom

SEVENTH WEEK

March 18, 1968 (Monday)

0800 - 1200 (4 hrs.)
Physical Combat

**GO HOME EARLY
NIGHT BEFORE OR
HAVE S-6 HANDLE**

Sgt. Wittauer

1300 - 1700 (4 hrs.)
Narcotics

Sgt. Wittauer

March 19, 1968 (Tuesday)

0400 - 1200 (8 hrs.)
Water Safety

Sgt. Williams

March 20, 1968 (Wednesday - 2nd half of class)

0800 - 1200 (4 hrs.)
Firearms Proficiency (repeat)

Capt. Van Blaricom

1300 - 1700 (4 hrs.)
Firearms Proficiency (repeat-cont)

Capt. Van Blaricom

March 21, 1968 (Thursday - 2nd half of class)

0800 - 1200 (4 hrs.)
Firearms Proficiency (repeat-cont)

Capt. Van Blaricom

1300 - 1700 (4 hrs.)
Firearms Qualification (repeat)

Capt. Van Blaricom

March 22, 1968 (Friday)

0800 - 1200 (4 hrs.)
Review

Capt. Van Blaricom

1300 - 1700 (4 hrs.)
Examination of Notebook Inspection

Capt. Van Blaricom

April 1, 1968 (Monday)

2000 - 2015 (1/4 hr.)
Graduation

City Council

