

**BELLEVUE
POLICE DEPARTMENT
BELLEVUE, WASHINGTON**

1967

ANNUAL REPORT

BELLEVUE
POLICE DEPARTMENT

ANNUAL REPORT
FOR THE YEAR
1967



N. J. GIARDINA
CHIEF OF POLICE

Law Enforcement Code of Ethics

As a Law Enforcement Officer, my fundamental duty is to serve mankind; to safeguard lives and property; to protect the innocent against deception, the weak against oppression or intimidation, and the peaceful against violence or disorder; and to respect the Constitutional rights of all men to liberty, equality and justice.

I will keep my private life unsullied as an example to all; maintain courageous calm in the face of danger, scorn, or ridicule; develop self-restraint; and be constantly mindful of the welfare of others. Honest in thought and deed in both my personal and official life, I will be exemplary in obeying the laws of the land and the regulations of my department. Whatever I see or hear of a confidential nature or that is confided to me in my official capacity will be kept ever secret unless revelation is necessary in the performance of my duty.

I will never act officiously or permit personal feelings, prejudices, animosities or friendships to influence my decisions. With no compromise for crime and with relentless prosecution of criminals, I will enforce the law courteously and appropriately without fear or favor, malice or ill will, never employing unnecessary force or violence and never accepting gratuities.

I recognize the badge of my office as a symbol of public faith, and I accept it as a public trust to be held so long as I am true to the ethics of the police service. I will constantly strive to achieve these objectives and ideals, dedicating myself before God to my chosen profession . . . law enforcement.

1967

City Population of 26,653

City Budget of \$2,597,126.00

17.0 sq. miles with 139 miles of public roads

Police Budget of \$278,316.00

44 Personnel 7 Traffic Officers

Equipment

9 Police Dars

Cars used for Traffic

1 1966 Harley-Davidson Motorcycle

1 1968 Harley-Davidson Motorcycle

Personnel

N.J. Giardina, Chief

25 Patrolmen

G.C. Whitman, Asst. Chief

4 Clerk I

4 Captains

3 Clerk II

6 Sergeants

Promotions

Capt. G.C. Whitman to Asst. Chief 1-1-67

Sgt. C.A. Meyer to Capt. 1-1-67

Det. R.H. Wittauer to Det. Sgt. 1-1-67

Sgt. F.M. Anderson to Capt. 2-1-67

Ptlm. F. D. Williams to Sgt. 2-1-67

Sgt. R.F. Davis to Capt. 10-1-67

Ptlm. J.B. Pettersen to Sgt. 10-1-67

Ptlm. D.J. Laphorne to Sgt. 10-1-67

Ptlm. J.E. Hassinger to Sgt. 12-1-67

Resignations

Capt. G.R. Quarnstrom 2-1-67

Ptlm. J.C. Kellum 2-10-67

Ptlm. I.N. Strom 3-31-67

Ptlm. N.L. Kelly 4-11-67

Ptlm. S.D. Smith 5-5-67

Ptlm. J.J. Brennan 7-24-67

Capt. F.M. Anderson transferred to Public Works

Clerk II A.E. Wegener 8-21-67

Ptlm. E.J. Fjerstad 10-17-67

Clerk II R.A. Stone 11-23-67

Ptlm. D.M. Smith 12-1-67

Ptlm. J.P. Ryan 12-21-67

New Employees

Ptlm. P.H. Olson 2-16-67

Ptlm. R.C. Gleason 2-16-67

Ptlm. S.B. Smith 4-1-67

Ptlm. R.S. Kingsbury 4-1-67

Ptlm. C.C. Parker 6-16-67

Ptlm. C.A. Turi 7-16-67

Ptlm. P.M. Smith 7-16-67

Ptlm. J.R. Little 7-16-67

Ptlm. J.P. Ryan 10-16-67

Ptlm. R.A. Pierson 11-16-67

Ptlm. W.L. Potter 11-16-67

Clerk II C. Anderson 11-1-67

Ptlm. H.J. Nordyke 7-16-67

Clerk II A.E. Wegener 7-26-67

Ptlm. R.W. Guley 8-16-67

Ptlm. J.J. Larkin 8-16-67

Ptlm. D.E. Morrison 8-16-67

Ptlm. E.J. Fjerstad 9-16-67

Clerk II J.A. Regula 9-19-67

Ptlm. R.D. Stover 10-16-67

Ptlm. J.J. Brennan 12-1-67

Ptlm. B. Collin 12-1-67

Ptlm. C.S. German 12-1-67

Ptlm. J.C. Kellum 12-29-67

1967 cont.

Traffic Division

864 accidents
615 were investigated by officers
249 were non-investigated citizen's reports

0 fatals
435 injured

Adult citations - 4559
Juv. citations - 649
Warnings - 8118

1132 hours worked in Accident Investigation
6865 hours work@d in Traffic Enforcement

TABLE OF CONTENTS

City of Bellevue Public Officials	page 1
City of Bellevue General Information	page 2
City of Bellevue Aerial Photograph	page 3
City of Bellevue Map	page 4

SECTION I

DEPARTMENT ORGANIZATION AND PERSONNEL

Chief's Message	page 5 - 6
Organization Chart	page 7
Salary Structure - Personnel Strength	page 8 - 9
Department Personnel Photograph	page 10
Personnel by Position	page 11 - 13
Personnel Changes	page 14 - 16
Assistant Chief of Police	page 17
Patrol Division	page 18
Patrol Division Photograph	page 19
Traffic Division	page 20
Traffic Division Photograph	page 21
Detective Division	page 22
Detective Division Photograph	page 23
Services Division	page 24
Services Division Photograph	page 25

TABLE OF CONTENTS (CONT)

SECTION II

STATISTICAL INFORMATION

Budget Allowance	page 26
Complaints - Arrests	page 27 - 33
Complaint Zone Map	page 34
Complaint Values	page 35
Complaints by Zone	page 35
Complaints by Month	page 36
Complaints by Day of Week	page 36
Complaints by Hour of Day	page 36 - 38
Complaints Included	page 38
Arrests by Month	page 39
Arrests by Area of Residence	page 39
Arrests by Type	page 40
Arrests by Police Disposition	page 40
Complaints - Arrests Graph	page 41
All Accidents	page 42
Violations Causing Accidents	page 42
Accident Values	page 42
Accidents by Month	page 43
Accidents by Day of Week	page 43
Accidents by Hour of Day	page 43 - 44

TABLE OF CONTENTS (CONT)

Enforcement Action Taken	page 45
Citations by Month	page 45
Citations by Day of Week	page 46
Citations by Hour of Day	page 46
Accidents - Citations Graph	page 47
Miscellaneous Activity	page 48
Man Hours Distribution	page 49 - 50
Vehicle Operation	page 51

SECTION III

SPECIAL REPORT ON TRAINING

Training Photograph	page 52
Bellevue Police Academy	page 53 - 55
College Accreditation	page 55
Education Incentives	page 55 - 59
Tuition Reimbursement	page 59

CITY OF BELLEVUE

PUBLIC OFFICIALS

COUNCIL:

Kenneth A. Cole - Mayor

Clarence F. Wilde

Kenneth E. Gates

Robert J. Meagher

William H. Biggs

Charles H. Simonson

Robert J. Mulloy

CITY MANAGER:

L. Joe Miller

JUDGE:

Melvin V. Love - Bellevue District Justice

CIVIL SERVICE COMMISSION:

John D. Shaw RAdm (ret) - Chairman

Arthur C. Evered

John F. Doorish

Ellen B. Swenson - Secretary

CITY OF BELLEVUE
GENERAL INFORMATION

INCORPORATED:

March 31, 1953

GOVERNMENT:

Council - Manager

LOCATION:

On the east side of Lake Washington directly across from the City of Seattle to which it is connected by two floating bridges.

AREA:

1966 - 11.6 square miles with 114 miles of public streets

1967 - 17.0 square miles with 139 miles of public streets

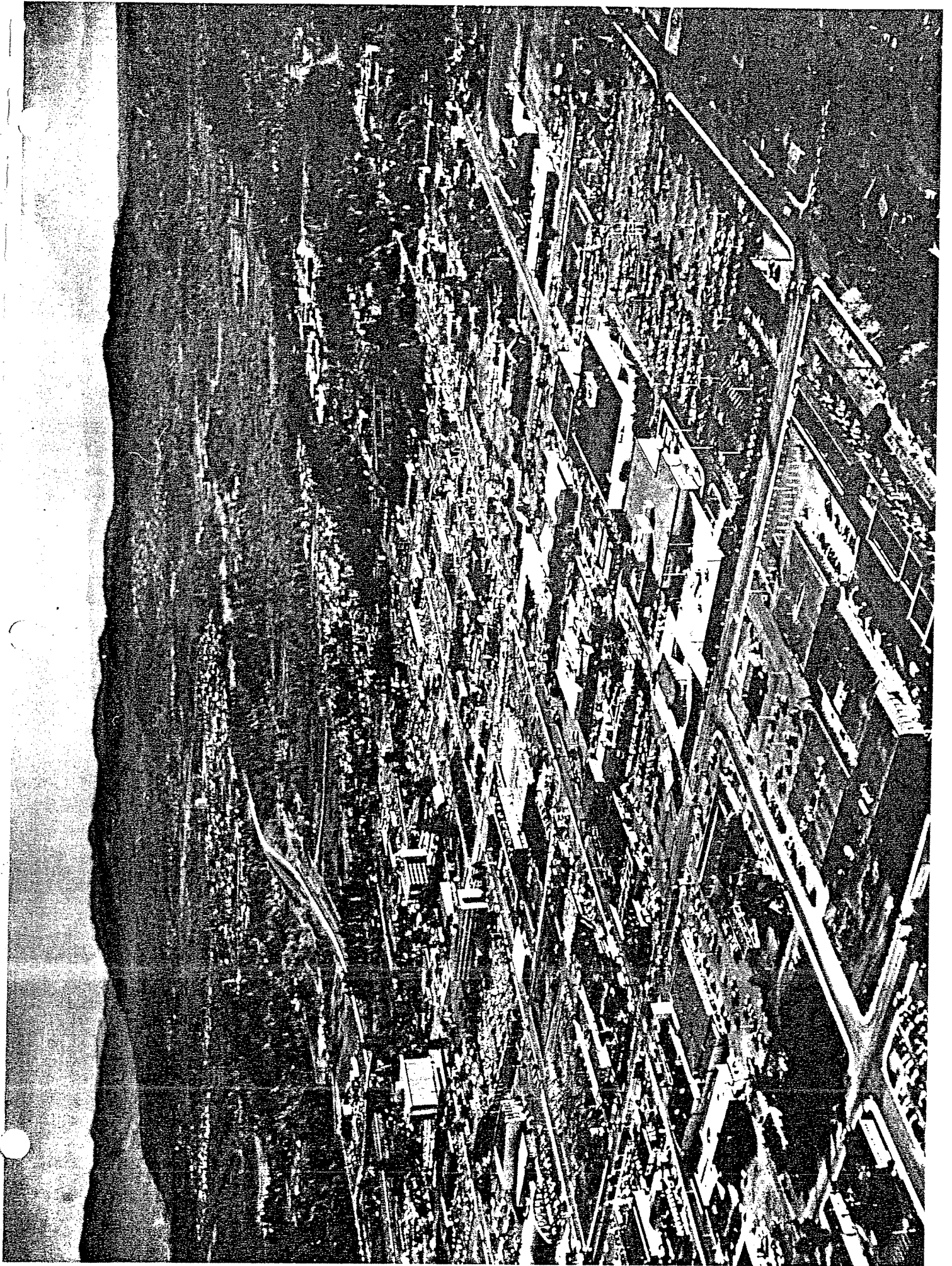
POPULATION:

1966 - 20,600

1967 - 26,653

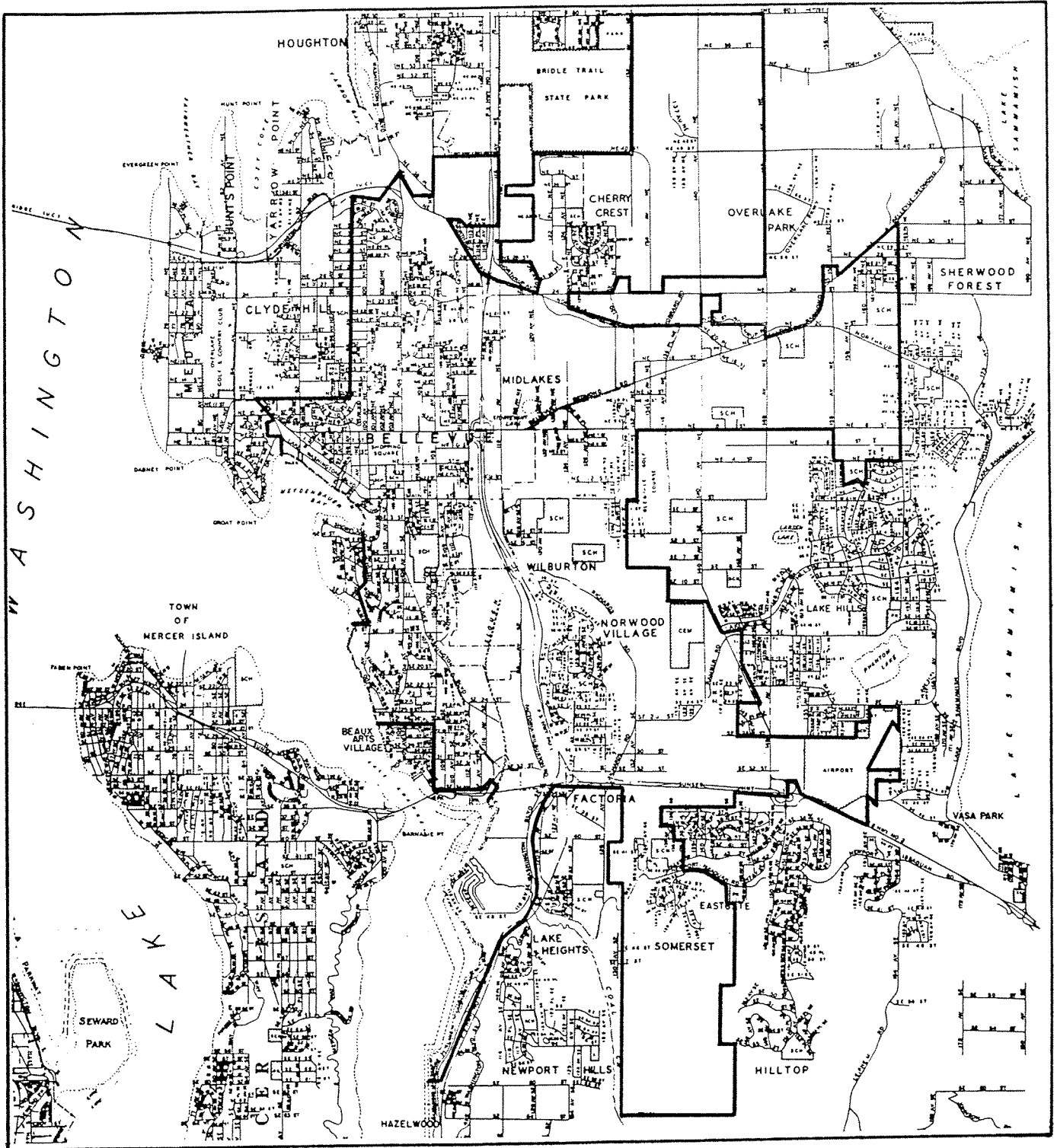
CHARACTER:

The City of Bellevue is the rapidly expanding center of business and residential development on the suburban "East Side" of metropolitan Seattle.



CITY OF BELLEVUE

1967



SECTION I
DEPARTMENT ORGANIZATION
AND
PERSONNEL

CHIEF'S
MESSAGE



Mr. L. Joe Miller, City Manager
City of Bellevue, Washington

Dear Mr. Miller:

Submitted herewith is the 1967 Annual Report of the Bellevue Police Department.

There were three areas of particular achievement during the past year which deserve comment, and these were:

1. An increase in strength from 33 to 44 personnel, with an additional 4 scheduled for 1968.
2. A substantial increase in salaries for the 1968 budget.
3. Special emphasis on training, with concurrent requirements and benefits.

The increase in personnel has significantly aided the Department in fulfillment of its primary responsibility to protect the public during a period of phenomenal City expansion and a general increase in activity that necessitates Police Service. The full effects of this expansion have not yet been fully realized, due to the time required to recruit personnel of the standards we demand and train them, but their results are

being felt and an additional four men have been authorized for 1968 to further assist with continued expanding activity.

The increase in salaries authorized for 1968 has raised the level of income for Department personnel to a competitive standard with other agencies in the Metropolitan Seattle area and has greatly assisted, not only in the continued recruitment of superior personnel, but also in the retention of valuable experience. This has promoted the high morale necessary to effective performance and has enabled the official discontinuance of all outside employment by Police Officers. The comparative salary schedules for 1967 and 1968 will be found in this report.

The emphasis on training has consisted of the Bellevue Police Academy expansion to six weeks duration, its official recognition for award of college credit upon successful completion, college education requirements for promotion, and percentage pay increases above base salaries for specified levels of college education. We are especially proud of this "package" and I am convinced that it constitutes a major step forward in the goal of achieving professional standards and status in the Police Service. The specific details of these programs will be found in the Special Report on Training, Section III of this report.

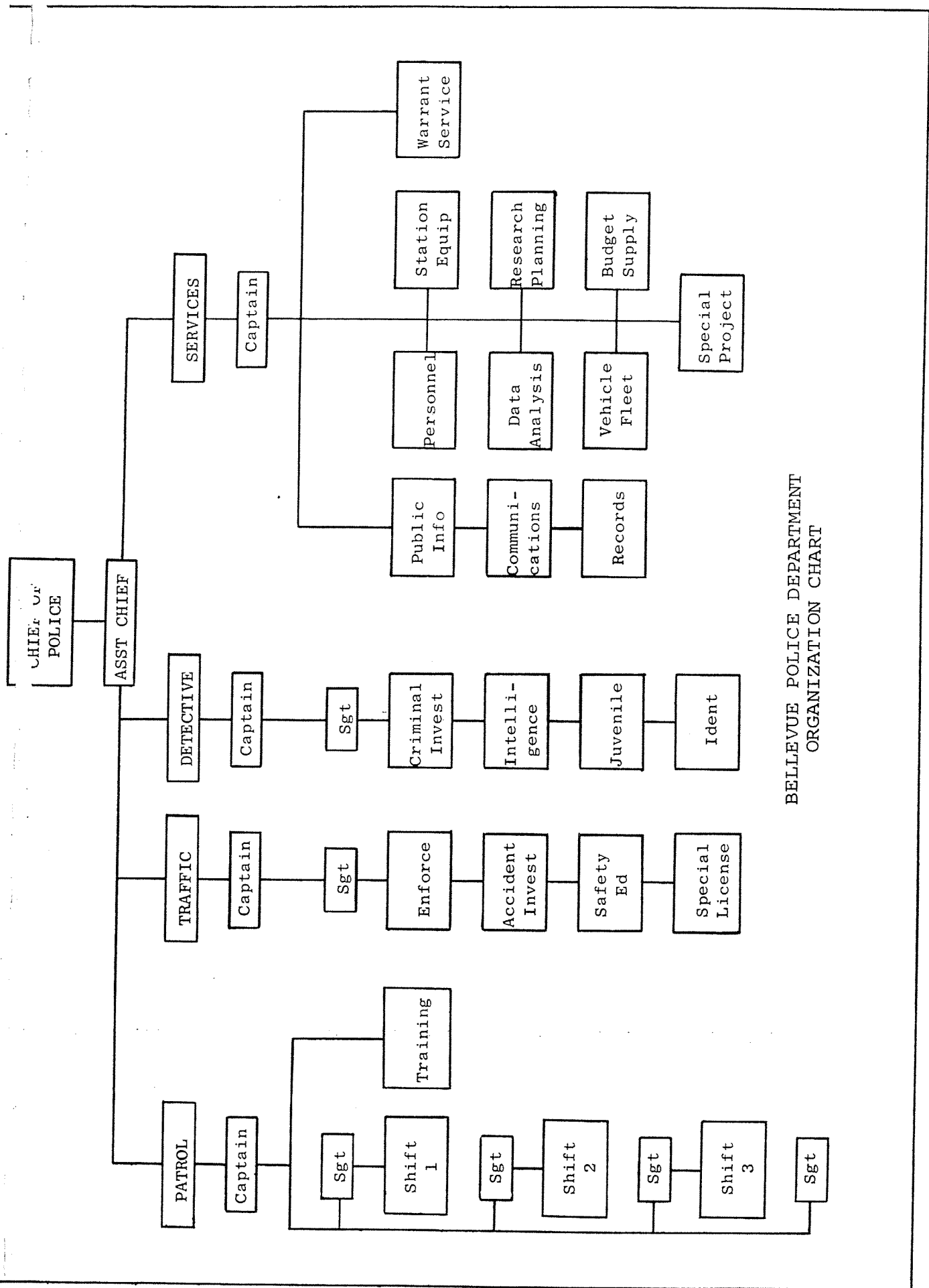
In all of the above areas of accomplishment, I wish to express my sincere appreciation for the forward thinking approach that both the City Council and the City Manager have consistently taken, in their authorization of necessary resources and their support of our efforts to serve the citizens they represent.

As always, the Bellevue Police Department will continue to operate in purposeful dedication to the protection of the lives, rights and property of our citizens and I wish to commend the members of my staff for their unselfish pursuit of this goal.

Respectfully submitted,



N.J. Giardina, Chief of Police



BELLEVUE POLICE DEPARTMENT
ORGANIZATION CHART

SALARY STRUCTURE - PERSONNEL STRENGTH

967 SCHEDULE:

Position	Step A	Step B	Step C	Step D	Step E	Number
Chief of Police	767	805	845	887	930	1
Assistant Chief	694	730	767	805	845	1
Captain	660	694	730	767	805	4
Sergeant	600	629	660	694	730	6
Patrolman *	517	544	572	600	629	25
Clerk I	384	403	424	445	468	4
Clerk II	366	384	403	424	445	3
Total Personnel						44

* Detective allowance of 3 % additional

968 SCHEDULE:

Position	Step A	Step B	Step C	Step D	Step E	Number
Chief of Police	-	-	1050	1075	-	1
Assistant Chief	-	-	950	975	-	1
Captain	-	-	850	900	-	4
Sergeant	-	-	775	800	-	6

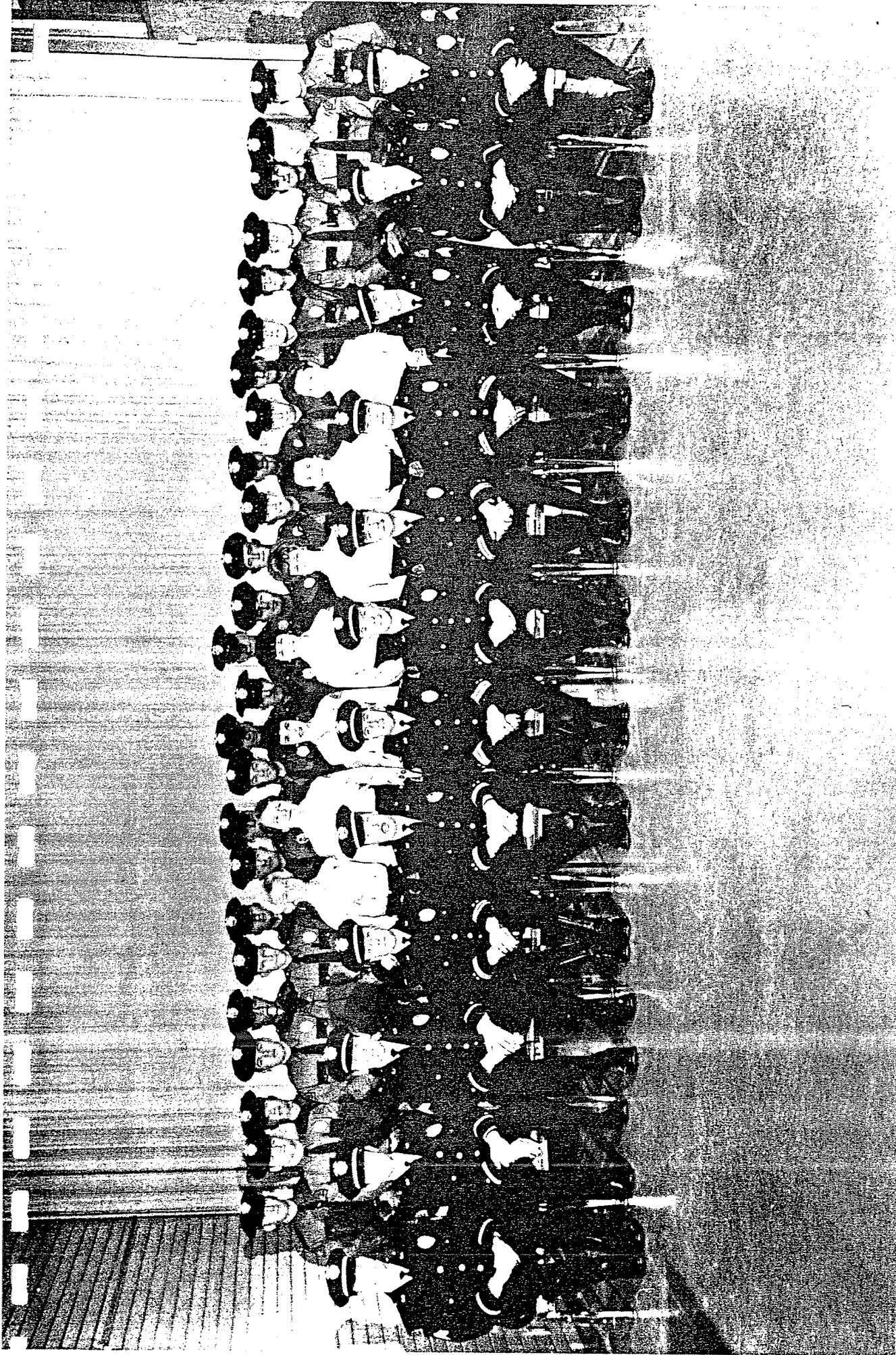
SALARY STRUCTURE - PERSONNEL STRENGTH (CONT)

1968 SCHEDULE (CONT):

Position	Step A	Step B	Step C	Step D	Step E	Number
Patrolman *	650	675	700	725	-	29
Clerk I	422	443	465	488	512	4
Clerk II	402	422	443	465	488	3
	Total Personnel					48

* Detective allowance of 3 % additional

* Motorcycle rider allowance of \$ 15 additional



PERSONNEL BY POSITION

NAME	EMPLOYMENT DATE	POSITION
N.J. Giardina	1/1/55	Chief
G.C. Whitman	9/16/53	Asst. Chief
H.F. Corkrey	12/1/55	Captain
D.P. Van Blaricom	12/6/56	Captain
C.A. Meyer	1/1/57	Captain
R.F. Davis	8/5/58	Captain
W.C. Fredrickson	5/1/61	Sergeant
R.H. Wittauer	10/14/57	Sergeant
F.D. Williams	7/16/63	Sergeant
J.B. Pettersen	10/16/64	Sergeant
D.J. Lapthorne	10/1/61	Sergeant
J.E. Hassinger	1/11/65	Sergeant
G.A. George	8/1/60	Patrolman
C.D. Hein	8/16/64	Patrolman
G.E. Arcand	4/1/65	Patrolman
D.E. Hansen	5/16/65	Patrolman
D. Smith	1/1/66	Patrolman
R.A. Woods	9/1/66	Patrolman
R.A. Maier	10/16/66	Patrolman

PERSONNEL BY POSITION (CONT)

NAME	EMPLOYMENT DATE	POSITION
P.H. Olson	2/16/67	Patrolman
R.C. Gleason	2/16/67	Patrolman
R.S. Kingsbury	4/1/67	Patrolman
C.C. Parker	6/16/67	Patrolman
C.A. Turi	7/16/67	Patrolman
J.R. Little	7/16/67	Patrolman
H.J. Nordyke	7/16/67	Patrolman
R.W. Guley	8/16/67	Patrolman
J.J. Larkin	8/16/67	Patrolman
D.E. Morrison	8/16/67	Patrolman
R.D. Stover	10/16/67	Patrolman
R.A. Pierson	11/16/67	Patrolman
W.L. Potter	11/16/67	Patrolman
J.J. Brennan	12/1/67	Patrolman
B. Collin	12/1/67	Patrolman
C.S. German	12/1/67	Patrolman
J.C. Kellum	12/29/67	Patrolman
F.M. Allen	8/15/57	Clerk I
C.T. Steere	12/3/57	Clerk I
L.M. Beard	2/1/61	Clerk I
B.J. Woolard	11/2/61	Clerk I

PERSONNEL BY POSITION (CONT)

NAME	EMPLOYMENT DATE	POSITION
T.A. Berry	9/1/66	Clerk II
J.A. Regula	9/19/67	Clerk II
C. Anderson	11/1/67	Clerk II

PERSONNEL CHANGES

PROMOTIONS:

Asst. Chief G.C. Whitman from Captain	1/1/67
Captain C.A. Meyer from Sergeant	1/1/67
Sergeant R.H. Wittauer from Patrolman	1/1/67
Captain F.M. Anderson from Sergeant	2/1/67
Sergeant F.D. Williams from Patrolman	2/1/67
Captain R.F. Davis from Sergeant	10/1/67
Sergeant J.B. Pettersen from Patrolman	10/1/67
Sergeant D.J. Lapthorne from Patrolman	10/1/67
Sergeant J.E. Hassinger from Patrolman	12/1/67

NEW PERSONNEL:

Patrolman P.H. Olson	2/16/67
Patrolman R.C. Gleason	2/16/67
Patrolman S.D. Smith	4/1/67
Patrolman R.S. Kingsbury	4/1/67
Patrolman C.C. Parker	6/16/67
Patrolman C.A. Turi	7/16/67
Patrolman P.M. Smith	7/16/67
Patrolman J.R. Little	7/16/67

PERSONNEL CHANGES (CONT)

NEW PERSONNEL (CONT):

Patrolman H.J. Nordyke	7/16/67
Clerk II A.E. Wegener	7/26/67
Patrolman R.W. Guley	8/16/67
Patrolman J.J. Larkin	8/16/67
Patrolman D.E. Morrison	8/16/67
Patrolman E.J. Fjerstad	9/16/67
Clerk II J.A. Regula	9/19/67
Patrolman R.D. Stover	10/16/67
Patrolman J.P. Ryan	10/16/67
Patrolman R.A. Pierson	11/16/67
Patrolman W.L. Potter	11/16/67
Clerk II C. Anderson	11/1/67
Patrolman J.J. Brennan	12/1/67
Patrolman B. Collin	12/1/67
Patrolman C.S. German	12/1/67
Patrolman J.C. Kellum	12/29/67

TERMINATIONS:

Captain G.R. Quarnstrom	2/1/67
Patrolman J.C. Kellum - Re-employed 12/29/67	2/10/67
Patrolman I.N. Strom	3/31/67

PERSONNEL CHANGES (CONT)

TERMINATIONS (CONT):

Patrolman N.L. Kelly	4/11/67
Patrolman S.D. Smith	5/5/67
Patrolman J.J. Brennan - Re-employed 12/1/67	7/24/67
Captain F.M. Anderson - Transfer to Public Works Department	8/15/67
Clerk II A.E. Wegener	8/21/67
Patrolman E.J. Fjerstad	10/17/67
Clerk II R.A. Stone	11/23/67
Patrolman P.M. Smith	12/1/67
Patrolman J.P. Ryan	12/21/67

ASSISTANT
CHIEF OF POLICE



The Assistant Chief of Police is primarily responsible for direct aid to the Chief of Police in the administration of the Bellevue Police Department. In accomplishing this function he serves to coordinate the activities of the Patrol, Traffic, Detective and Services Divisions towards achievement of maximum effectiveness.

As a Department representative, he acts as a liaison with other official agencies and is particularly active in the fulfillment of speaking engagements.

In the absence of the Chief of Police, the Assistant Chief of Police acts in that capacity.

G. C. Whitman

G.C. Whitman, Assistant Chief of Police.

PATROL
DIVISION




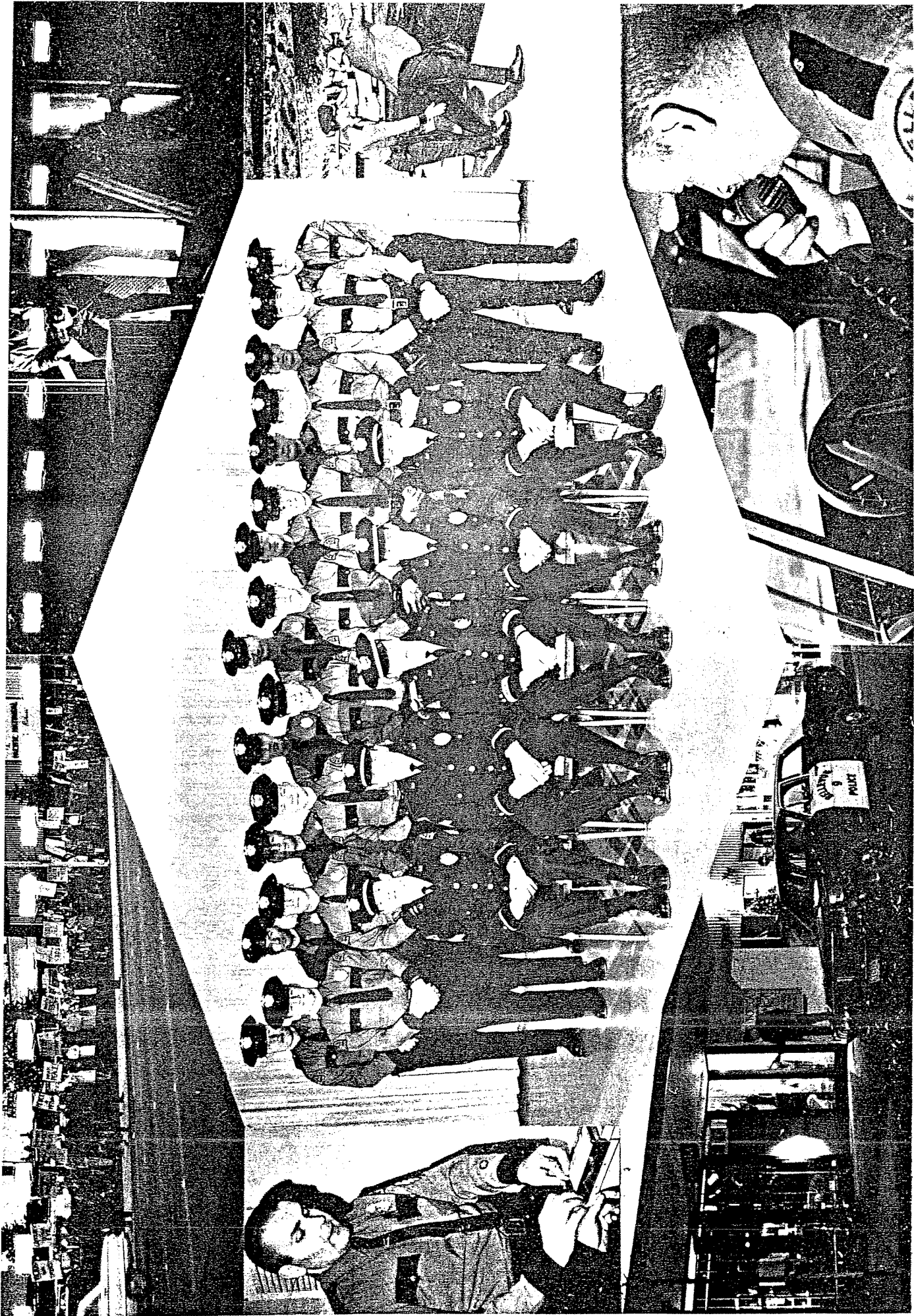
The Patrol Division, largest and oldest Division in the Bellevue Police Department, has the broadly described responsibility of providing a deterrent to violators, investigation of those violations which may occur and all the myriad services related thereto.

As the primary component of the Department operation, it is responsible for twenty-four hour coverage of the City and as such, it is supplemented by the specialist activities of the Traffic, Detective and Services Divisions. Patrol Division personnel operate mobile units in specifically assigned patrol districts, where they are within immediate reach of any emergency call and assume responsibility for all situations requiring Police attention. These may be as varied as response to a burglary in progress, investigation of a traffic accident, search for a lost child or report of a hazardous condition requiring corrective action by another City Department.

Most newly employed Patrolmen are initially assigned to the Patrol Division where they may obtain a wide range of experience in all aspects of Police Service.

The Patrol Division strives to provide a professional level of service to the public whenever and wherever required.


D.P. Van Blaricom, Captain



TRAFFIC
DIVISION

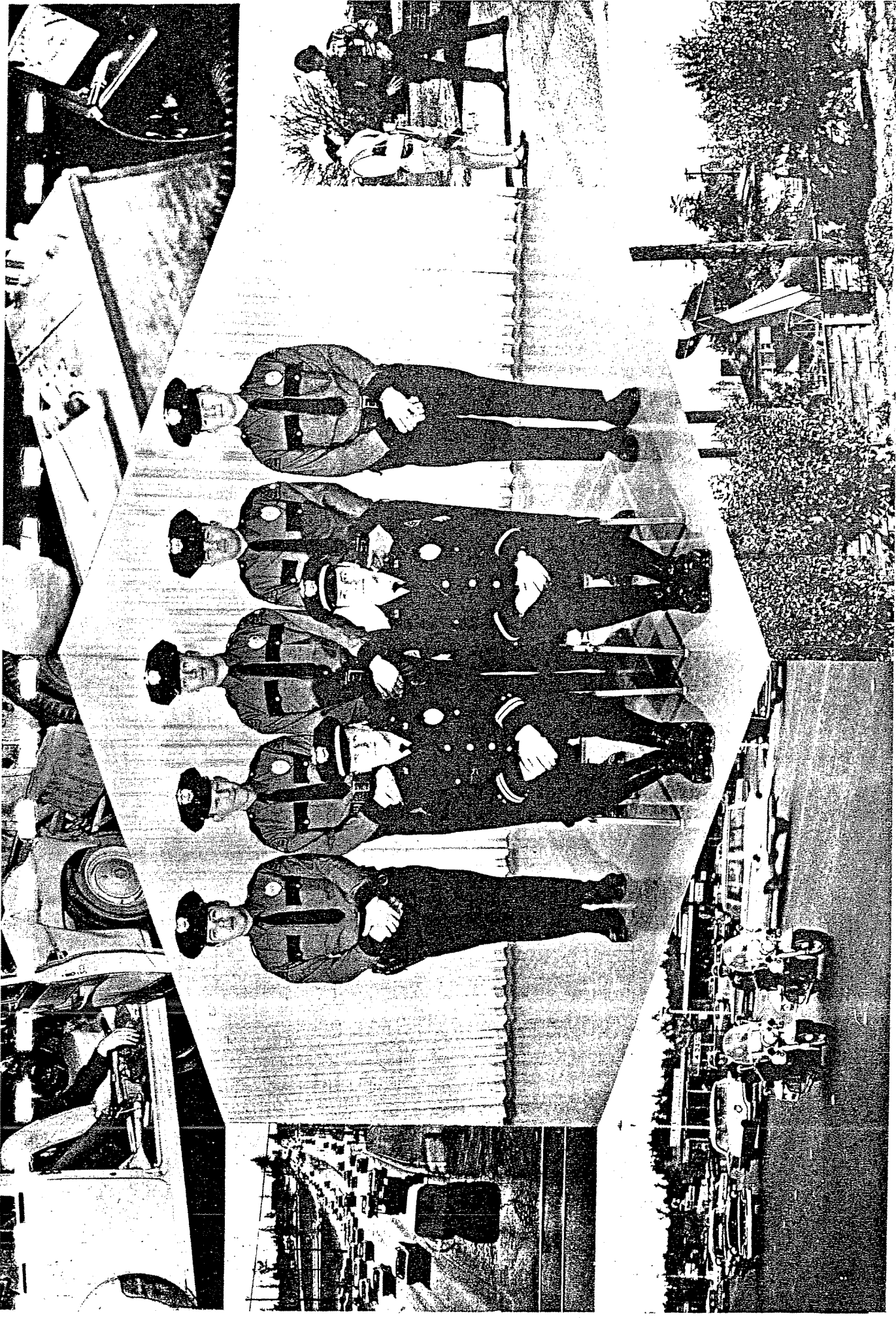


The Traffic Division was created by order of the Chief of Police in August, 1965 to accomodate the increase in traffic activity within the jurisdiction of the Bellevue Police Department, particularly in the category of vehicle accidents.

The Division is responsible for the promotion of traffic safety and strives to accomplish this function by enforcement of accident causing violations, consultation with the Engineering Department on needed improvements in the traffic pattern, participation in the high school driver education programs, assistance with the School Safety Patrol program and talks to various citizen groups. In spite of such efforts, accidents continue to occur and these are investigated to determine causes. The investigation is intended not only to assign liability, but also to discover means by which similar future accidents can be prevented. Prevention of accidents is the primary responsibility of the Division and constitutes its reason for existence.

The Traffic Division maintains an accident records section which indicates areas of need and operational effectiveness so that available resources will be applied where they will gain the most beneficial results.


H.E. Corkrey, Captain



DETECTIVE
DIVISION




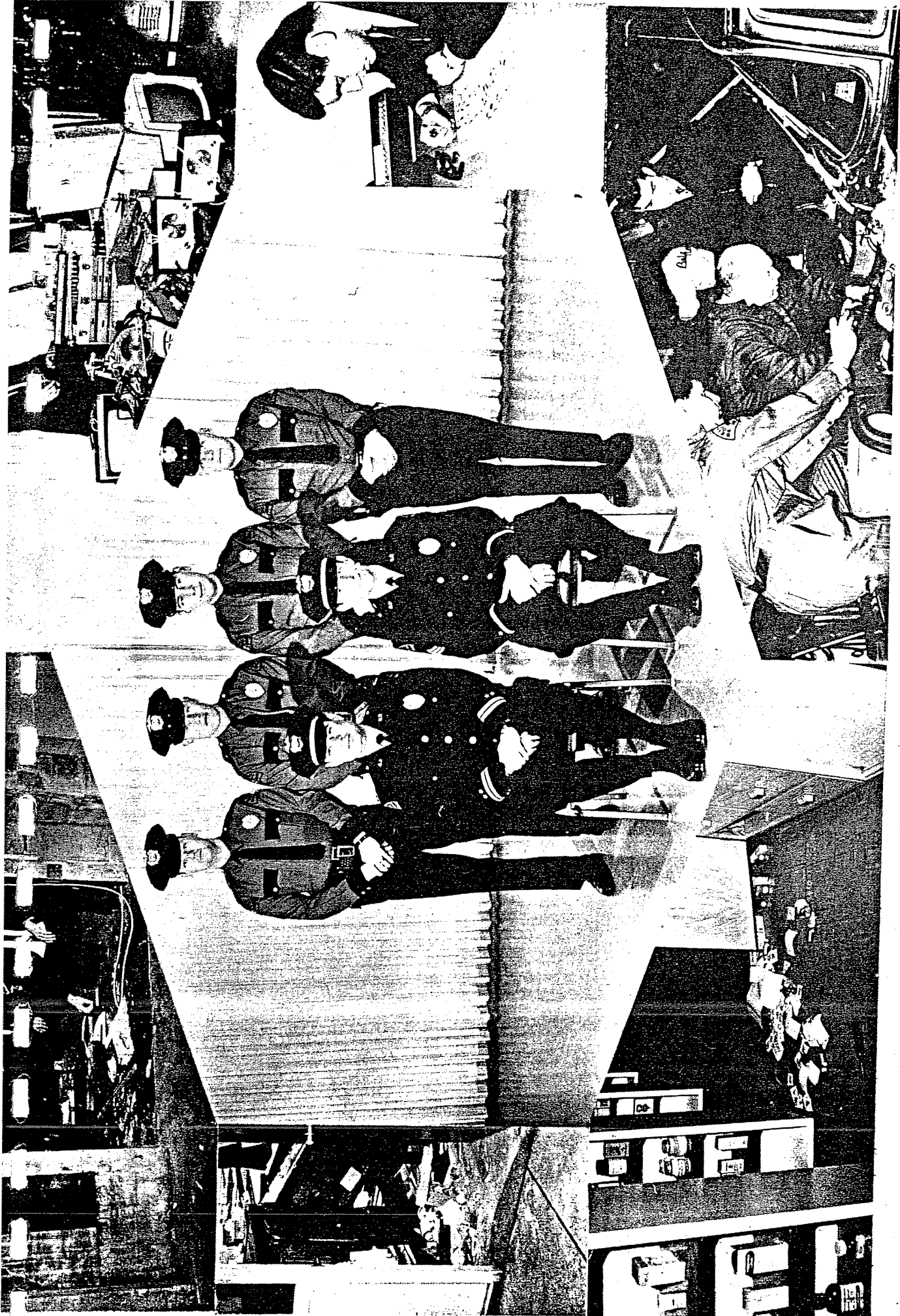
The Detective Division was established early in the development of the Bellevue Police Department organization and has expanded with the requirements of increased activity in the investigative area of responsibility.

The Division has primary responsibility for three sections and these are: criminal investigation, juvenile and intelligence. Criminal investigation includes the follow up investigation of all felonies and many misdemeanors, which require special attention to effect a disposition. Each must be reviewed, investigated in an effort to identify the person responsible and prepared for prosecution in court. Juvenile includes the review of all complaints involving juvenile suspects to determine the individual circumstances and make a decision on whether there should be a referral to Juvenile Court or reliance upon parental supervision with Police assistance. Intelligence includes the compilation of information on active criminals and their operations so that they can be more effectively investigated.

To fulfill their assigned responsibilities, Division personnel must maintain a close liaison relationship with Police and other official agencies for mutual assistance.

The Detective Division strives to maintain the highest rate of complaint clearance possible.


C.A. Meyer, Captain



SERVICES

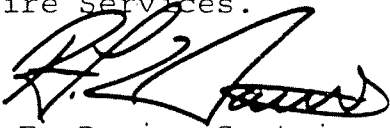
DIVISION

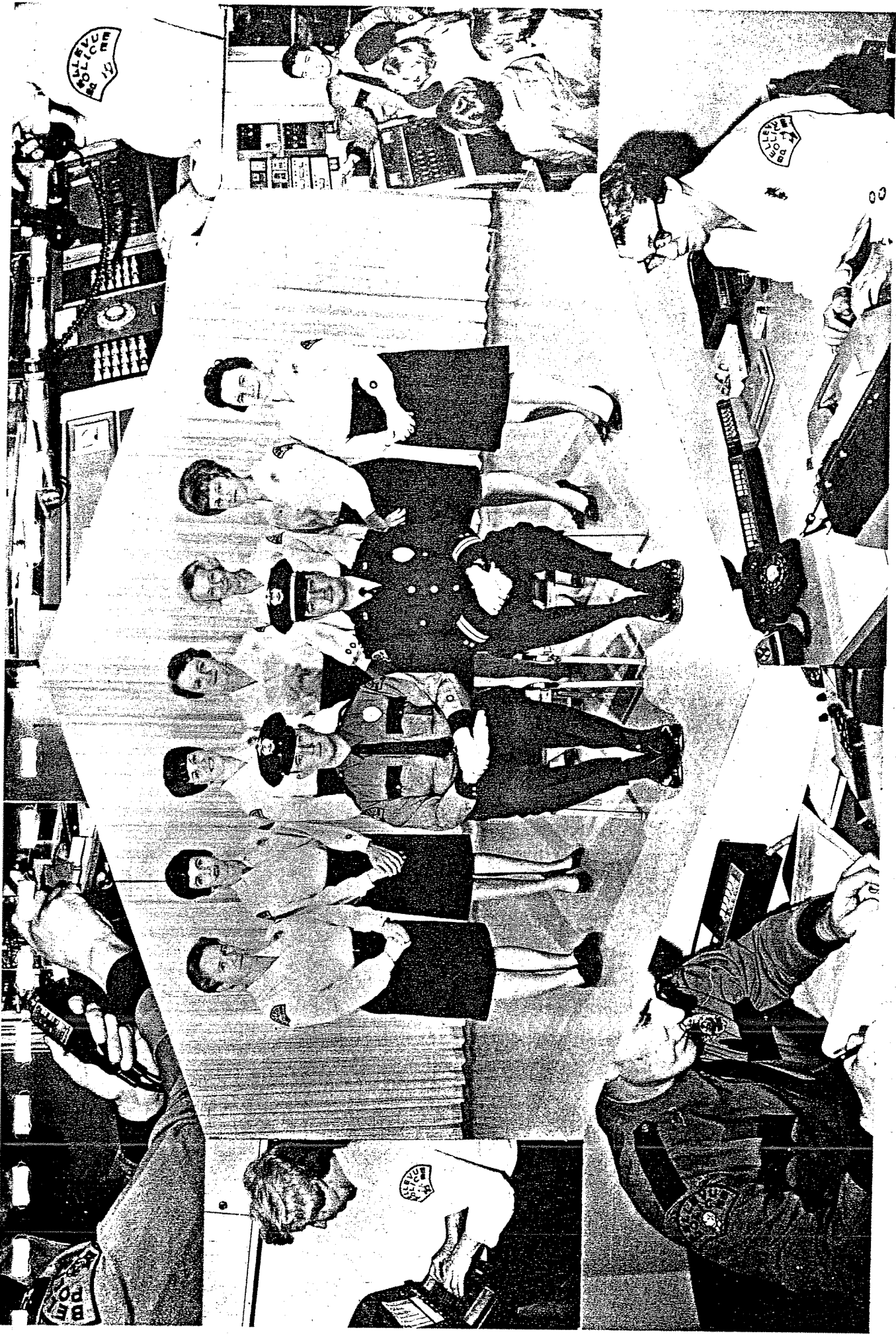


The Services Division was created by order of the Chief of Police in July 1964 to accommodate the expanding activities of the Bellevue Police Department.

The Division is responsible for all the supportive functions within the Department operation and exists to provide the means by which the Patrol, Traffic and Detective Divisions can accomplish their respective assignments. This includes the operation of the various communications facilities, compilation of records and statistical reports, recruitment of personnel, supply of materials and equipment, maintenance of vehicles and equipment, research and planning for operational improvement, warrant service and miscellaneous assignments as may be required. The women assigned to the Division perform all Department clerical and secretarial functions as well as providing assistance with the processing of female prisoners.

Two of the Division accomplishments are: revision of the reporting system to provide a comprehensive digest of activity and coordination of a new communications center for Police and Fire Services.


R.F. Davis, Captain



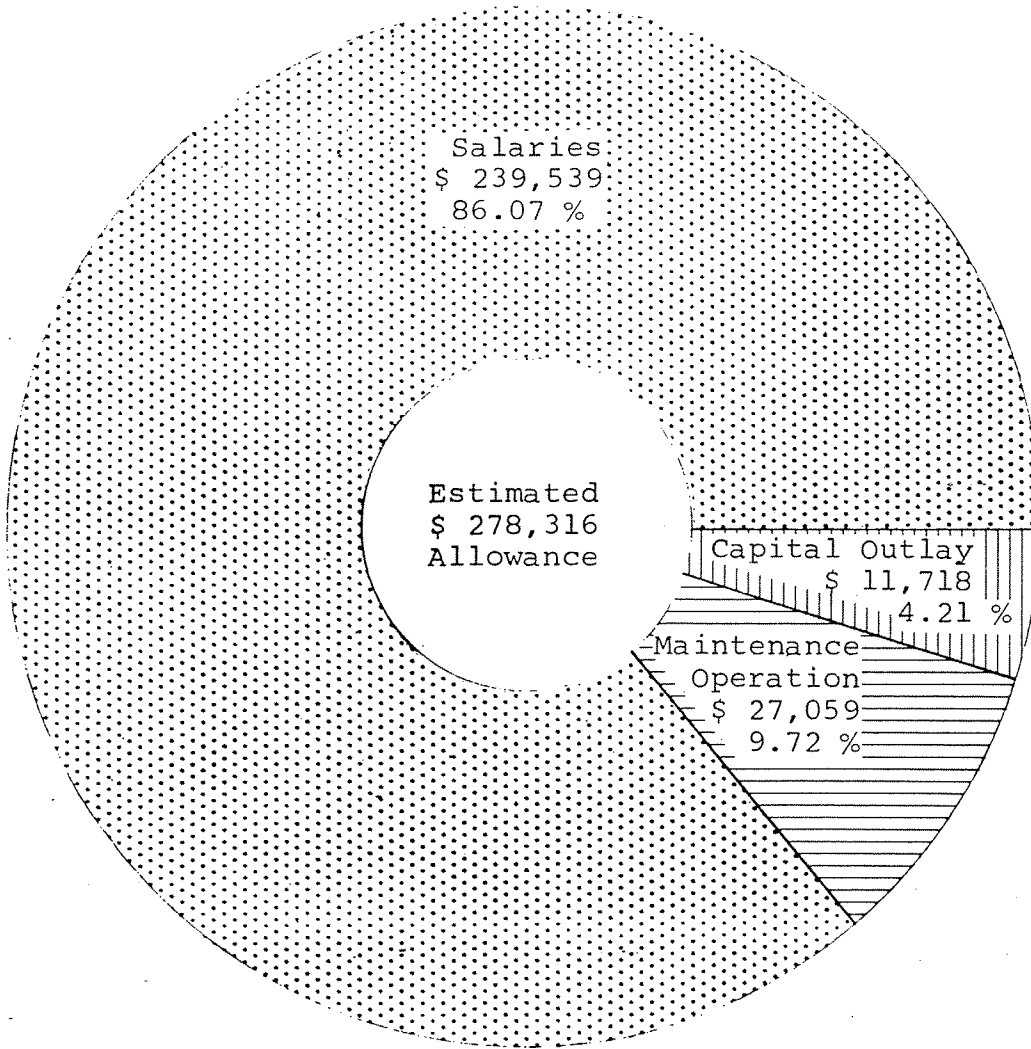
SECTION II

STATISTICAL INFORMATION

BUDGET ALLOWANCE

The budget allowance of the Bellevue Police Department was \$ 278,316 and this was 10.72 % of the total City of Bellevue budget allowance.

This represents a per capita cost of \$ 10.44 for Police services, (a reduction of .17¢ from 1966).



COMPLAINTS - ARRESTS

TYPE OF ACTIVITY	COMPLAINTS		ARRESTS			
	1966	1967	Adult 1966	Adult 1967	Juv 1966	Juv 1967
1-ANIMALS						
A-Vicious	49	48				
B-Other	47	26				
2-ARSON	14	19			8	4
3-ASSAULT						
A-1st & 2nd degree	5	11	4	14		2
B-3rd degree	38	53	4	14	14	5
C-Threatened	15	15				
D-Other	1	1				
4-ASSISTANCE						
A-Official agency	100	85	65	28	19	26
B-Other	12	13				
5-BURGLARY						
A-Commercial	78	208	3	16	5	16
B-Residence	92	143	4	1	8	9
C-Public agency	8	20				6
D-Poss. burglar tools	1		2			
E-Other	18	40		2	10	1
6-DISTURBANCE						
A-Civil dispute	13	17				

