

City of Bellevue
ARTS
program

Bellevue Arts Commission



A public hearing for public art at Meydenbauer Bay Park will take place at the December 1st Arts Commission meeting. The above proposal is by Laura Brodax.

Department of Planning and
Community Development

December 1, 2015
Regular Meeting



“The arts are an important expression of how people think of and experience the city and each other. Bellevue seeks to foster a strong arts and cultural community chiefly supported through a wide range of artists, art and cultural institutions, and arts groups offering a variety experiences to an engaged audience.”

-City of Bellevue, Comprehensive Plan, Urban Design & the Arts Element

Agenda

Department of Planning and
Community Development

Agenda

Tuesday, December 1, 2015
Meeting: 4:30 p.m.
Bellevue City Hall, 1E-109

Bellevue Arts Commission
Regular Meeting
Commission Staff Contact: 425.452.4852

-
1. **CALL TO ORDER** 4:30
Chair Manfredi will call the meeting to order.
 2. **APPROVAL OF AGENDA AND MINUTES** 4:30 – 4:35
 - A. Chair Manfredi will ask for approval of the agenda.
 - B. Chair Manfredi will ask for approval of the November, 2015 regular meeting minutes.
 3. **ORAL COMMUNICATIONS** 4:35 – 4:40
Chair Manfredi will entertain oral communications limited to three minutes per person or five minutes if representing the official position of a recognized community organization for other than main agenda items and public hearing subject. A maximum of three people are permitted to speak to each side of any one topic.
 4. **ACTION ITEMS AND DISCUSSION ITEMS**
 - A. STart and Wilburton Station Artist Phillip K. Smith III 4:40 – 5:30
 - B. Meydenbauer Bay Public Hearing 5:30 – 6:05
 1. Commission Report
 2. Motion to open public hearing
*Note: Three-minute limit per person or recognized community organization.
 3. Receive public testimony
 4. Motion to close public hearing
 5. Commission discussion

Action: Move to endorse the panel's recommendation that the City commission Stuart Nakamura to implement the design proposal "Floating Worlds" as presented to the Arts Commission.

Action: Move to endorse the panel's recommendation that the City commission Laura Brodax to implement the design proposal "Meydenbauer Bay tile Mural: Revisiting the Past" as presented to the Arts Commission.

Action: Move to endorse the panel’s recommendation that the City commission Adam McIsaac to implement the design proposals, “Meydenbauer Bay Ravine Viewpoint Guardrails” and “Salmon Yaka Chaku” as presented to the Arts Commission.

- | | | |
|----|---|-------------|
| 5. | COMMISSION QUICK BUSINESS | 6:05 – 6:10 |
| 6. | REPORTS
A. Commissioners’ Committee and Lead Reports

B. Project Updates from Staff
1. Monthly Project Update Report | 6:10 – 6:25 |
| 7. | CORRESPONDENCE, INFORMATION
A. Written correspondence (if any)

B. Information
1. Future agenda items
2. Committees | 6:25 – 6:30 |
| 8. | ADJOURNMENT
Chair Manfredi will adjourn the meeting. | 6:30 |

Wheelchair accessible. American Sign Language (ASL) interpretation is available upon request, and large print agendas available upon request. Please contact the Arts Program at least two days in advance smacdonald@bellevuewa.gov ▪ 425-452-4852 (Voice) ▪ Please dial 711 for assistance for the hearing impaired.

Department of Planning and
Community Development

Minutes

BELLEVUE ARTS COMMISSION
REGULAR MEETING
MINUTES

November 3, 2015
4:30 p.m.

Bellevue City Hall
Room 1E -109

COMMISSIONERS PRESENT: Chairperson Manfredi, Commissioners, Jackson, Lau Hui, Lewis, Madan, Malkin, Wolfteich

COMMISSIONERS ABSENT: None

STAFF PRESENT: Mary Pat Byrne, Scott MacDonald, and Chris Salomone, Department of Planning and Community Development

OTHERS PRESENT: None

RECORDING SECRETARY: Gerry Lindsay

I. CALL TO ORDER

The meeting was called to order at 4:32 p.m. by Chairperson Manfredi who presided. All Commissioners were present.

2. APPROVAL OF AGENDA AND MINUTES

A. Approval of Agenda

Motion to approve the agenda was made by Commissioner Jackson. Second was by Commissioner Malkin and the motion carried unanimously.

B. Approval of Minutes

Commissioner Madan pointed out that in several places Karen Abel's last name was misspelled as "Able."

Motion to approve the October 6, 2015, minutes as amended was made by Commissioner Jackson. Second was by Commissioner Malkin and the motion carried unanimously.

3. ORAL COMMUNICATIONS - None

4. ACTION ITEMS AND DISCUSSION ITEMS

A. Wilburton, Grand Connection and the Planning Work Plan

Department of Planning and Community Development Director Chris Salomone said the city has never had a workload as large as the one it is now shouldering. The City Council has reviewed and made recommendations on the work plan.

Mr. Salomone briefly discussed each project within the work plan and updated the Commission on planning projects that are currently in progress.

With regard to the Wilburton Study Area and the Grand Connection concept, Mr. Salomone said the Council has given the go-ahead to do the planning work. The two issues are separate but interconnected. The Wilburton study area includes the old auto row from the freeway to 120th Avenue NE between Main Street and NE 8th Street. The area is currently underzoned. It has a height limit of 75 feet and the allowed uses have been on the books for 30 years. An advisory committee will be appointed to study the area. The Council does not want to see big box or low-rise development given its proximity to the Downtown, light rail, and the freeway.

The Grand Connection is envisioned as a facility connecting the Wilburton area with the Downtown through the Pedestrian Corridor and the Downtown Park and on to the waterfront. The Council has earmarked resources to conduct the study. The connection across the freeway would be via a lid. There will be opportunity for the Arts Commission to look at the inclusion of artistic elements as well as the programming of art and events. An international search for architectural design firms will be done, and the selected firm will be asked to provide a design for the facility, and the Arts Commission will be involved in the selection process. The city owns the landing sites on both sides of the freeway and as such controls the opportunity in a way that is significant.

Mr. Salomone shared with the Commissioners a drawing of how the Grand Connection could look in linking the Pedestrian Corridor across the freeway to the Wilburton area. He noted that the rendering and others were what caught the imagination of the City Council. They were particularly moved by the notion of creating a multimodal facility connecting the Downtown to a future commercial area and to the Eastern Rail Corridor that connects North to the Spring District and Redmond.

Commissioner Malkin asked if consideration has been given to turning the Connection into a sculpture park similar to the Olympic Sculpture Park in Seattle. Mr. Salomone said that has been discussed.

B. Allocations Recommendations

Arts Specialist Mary Pat Byrne said the allocations committee worked diligently to develop its recommendations. She outlined for the Commission the process of considering the recommendations and noted that Commissioner Jackson would be asked to leave the room when the Eastside Arts Partnership recommendation was considered given that she is the executive director of one of the EAP groups, the Bellevue Youth Symphony Orchestra.

Ms. Byrne said the panel was so pleased by what it heard from both the EAP and Special Projects groups that it came up several thousand dollars short of the funding recommendations. The 25 special project applications received was the most ever, and the upward trend can be expected to continue in the coming years. A representative of 4Culture was present as part of the panel, which is the usual practice. 4Culture was able to offer additional funding to help close the gap.

Continuing, Ms. Byrne said the committee heard from the Bellevue Arts Museum that attendance continues to grow, and that the organization is taking a position of leadership to influence how architects look at the development of the community. No other museum in the area is taking on architecture as part of its interest and mission, and in making it an ongoing part of its program. Additionally, the committee learned that the people who are engaging in the programs offered by Music Works Northwest and Bellevue Youth Symphony Orchestra are highly diverse; for Music Works Northwest, between 40 and 50 percent of its students are from diverse populations, and for the Bellevue Youth Symphony Orchestra, 76 percent of the students are diverse.

Space continues to be an issue for groups. A large number of groups were known to be facing serious challenges during 2014. Things are a little better in 2015 but the issue will need to be followed carefully. Developer John Su has brought Resonance at Soma Tower online. It is a small music venue that is actively hosting various groups ranging from classical music to jazz. The small space can serve a variety of functions. Resonance applied for special projects funding to pilot a program to subsidize the rent for small groups wanting to use the space but unable to afford it; in order to qualify, the groups will need to have annual budgets of less than \$50,000 and have individual ticket prices not exceeding \$20. The panel was very excited about the proposal. If successful, the pilot could be applied to other venues as well.

Ms. Byrne said KidsQuest will open in its new space in September 2016. They are still raising funds but are optimistic about reaching their goal. Music Works Northwest reported that it has landed on its feet in its new space. The organization is strong, was able to find a new place to lease when it had to leave its long-term home, and was able to quickly raise the cash needed to make the necessary lease down payment and make tenant improvements. The group still needs to finish its buildout. Even so, enrollment has increased. A \$75,000 request has been made to the city to help complete tenant improvements; the request is being considered by the Council as part of the mid-biennium budget update. The organization will also be putting on a series of free concerts at Soma.

There are still groups in spaces that will need to find a new home soon, and there are groups currently without space. Pacific Northwest Ballet is still negotiating with Sound Transit to get enough recompense to build a new facility. The executive director believes the organization will prevail, but it has been a very difficult negotiation. At the same time, the organization is having to negotiate a lease with the landlord who wants to double the rent.

Japan Creative Arts/School of Taiko, which started the International Taiko Festival in Bellevue, are situated on the campus of Bellevue College. They have been told, however, that the space they are in will be torn down as part of a reconstruction project. The status of the group remains unclear.

The Eastside Association of Fine Arts is no longer located in the Seattle Design Center and is actively seeking a new space. The organization is easily accessible by those who want to join, but it does not have the funds necessary to pay market rate rent. Additionally, Ballet Bellevue left its site in Downtown Park early in 2015 and moved some of its classes to the Northwest Arts Center.

Commissioner Wolfteich said it was his understanding the organization has found a space across the street from Soma.

Ms. Byrne pointed out that the gap between the amount of funding available and the amount requested has gone up and down over the years. However, the average amount each group is receiving compared to their request has consistently trended upward. More funding needs to be found in order to keep up with the shortfall. One task for the Commission and staff during the coming year will be to look at the special projects applicants and talk about which are likely candidates to move into the EAP category.

A dashboard indicator of the health of groups is which groups are running deficits and which are balancing their budgets. Currently a couple of the groups are in fact running deficits, but they are very small. Overall, arts groups are doing a very good job of living within their means. With each year that goes by it becomes imperative that more funds be found so the groups can continue to be encouraged to be part of the creative expression of the population of Bellevue.

Commissioner Jackson recused herself from the conversation and left the room.

Ms. Byrne commented that one of the essential EAP factors is keeping a fairly stable and predictable level of income. That is why it is important for the panel to always look at the funding history for each group. In most cases over the past five years, the funding amount has stayed the same, but in a couple of cases there have been some significant boosts. The most significant is the Bellevue Youth Symphony Orchestra which was at \$6000 and for which the panel has recommended \$8000. The request scored very high in the panel recommendation, in part because the organization reported the number of requests for tuition assistance has doubled in just the last year. The increase could be tied to the strong relationship the organization has with Jubilee REACH, and the fact that the organization has a policy of not turning away children that want to be part of the orchestra. Supporting that policy is important as one way of making sure opportunities are open to a kids from the economically diverse segments of the population.

Ms. Byrne noted that three different groups talked about working with special needs children, adults or both in their programs.

Chair Manfredi noted that KBCS, the radio station affiliated with Bellevue College, received the highest score in the panel process. The organization does more than any other organization to bring the arts to the forefront. Commissioner Lewis added that KBCS does 85 percent of its own programming, all of which is very well done. Ms. Byrne said the station has gradually been increasing its reach by improving its transmitting capabilities and can now be heard as far away as Olympia.

Commissioner Malkin said noted that Pacific Northwest Ballet will have a difficult year, though they do have a solid donor base. Commissioner Madan added that the funding from the city is for their educational programs. Ms. Byrne said the organization is committed to staying in Bellevue. Their education program has gone through a renaissance as the result of teaming up with the school district to run the discover dance programs as well as a series of summer camps, and the result has been a significant increase in the number of students served. Additionally, the organization is actively working to bring performances back to the Eastside. Even if the school itself closes on June 1 as currently scheduled, their summer programs will not be impacted because they are offered in the schools. The organization hopes to stay in the same building but just move over one space, though the cost of rent may be an issue.

A motion to endorse the Allocation Review Panel's recommendations for 2016 Eastside Arts Partnership funding and present the recommendations to the City Council was made by Commissioner Lewis. The motion was seconded by Commissioner Malkin and the motion carried unanimously.

Commissioner Jackson returned to the room.

Commissioner Malkin asked if there was any discussion about bringing Village Theatre into the EAP grouping. Ms. Byrne said the problem with doing that is the organization is not Bellevue based, and only a small portion of their programming happens in Bellevue.

Commissioner Jackson asked about the Kai Chen Cello request. Chair Manfredi said his request was funded last year and the conversation was about a student performance culminating with a performance of his own. Thankfully he decided to do a full-scale professional performance with no students. It was very collaborative and he drew in a number of artists from the region. The program offered an unusual blending of Chinese

classical music with western classical music. The requested funds are for the second iteration of the program.

A motion to endorse the Allocations Review Panel's recommendations for 2016 Special Projects funding and present the recommendations to the City Council was made by Commissioner Wolfteich. The motion was seconded by Commissioner Lewis and the motion carried unanimously.

A motion to endorse the Allocations Review Panel's recommendation to use all of the \$13,000 of 4Culture Sustained Support funding as well as an additional \$13,000 for Special Projects funding was made by Commissioner Malkin. The motion was seconded by Commissioner Lewis and the motion carried unanimously.

C. Gifts/Loans Process Technical Update

Ms. Byrne explained that there are policies that dictate how the Public Art Program is operated. They include how art is chosen and how offers of gifts and loans of art are to be addressed. The policies are part of city code and were part of the enabling legislation for the Arts Commission. Under the policies, all offers of gifts and loans of art must be reviewed by the Arts Commission and either recommended for or against approval.

Ms. Byrne said when the procedure was originally drafted, the arts program was located in the Parks department, so there are a lot of references to that department that now belong to the Department of Planning and Community Development, and those references need to be corrected.

Commissioner Jackson Vote pointed out the need to refer to the Department of Planning and Community Development the same in both paragraphs where a change is proposed. Ms. Byrne agreed.

A motion to recommend the amended technical update to the procedure for reviewing offers to the City of gifts and loans of art to reflect the Department which staffs the arts program and provides the liaison to the Arts Commission was made by Commissioner Jackson. The motion was seconded by Commissioner Lewis and the motion carried unanimously.

D. Offer of Gift of Art from the Blackstock Family

Ms. Byrne reminded the Commissioners that an offer of a gift of sculpture from Betsy Blackstock, a Surrey Downs resident, was received. The work, entitled *Lotus*, is by Verena Schwippert, an artists whose works have been selected for inclusion in past sculpture exhibitions. Two of her works were actually purchased by the city for location in Downtown Park.

Ms. Byrne said following receipt of the offer to gift the sculpture to the city, several steps were taken in line with the established procedures. The first was to determine whether or not there is an appropriate location for the work. The donor actually

conditioned the gift on having it sited in Surrey Downs Park. The Parks department was contacted and they readily identified a location in that park.

The proposal and the sculpture was then reviewed by a subcommittee of the Arts Commission that included Commissioners Lau Hui, Malkin and Madan. Each criteria was carefully considered in light of the sculpture and the subcommittee concluded that each could be met. As a result, the subcommittee voted to recommend acquiring the work.

Commissioner Wolfteich asked what it will cost to move the work to the Surrey Downs Park. Ms. Byrne said it would cost a few thousand dollars, which is a nominal amount.

A motion to endorse the Public Art Gift Committee's recommendation to accept the sculpture, *Lotus*, as a gift by the Blackstock Family to the City's Art Collection and to place the work in Surrey Downs Park was made by Commissioner Jackson. The motion was seconded by Commissioner Lewis.

Commissioner Jackson thanked the subcommittee members for conducting the due diligence, including visiting the proposed park site.

Commissioner Malkin recommended that the site ultimately selected in Surrey Downs Park should be clearly visible. Ms. Byrne said the siting of the piece will be worked out with the park architect

The motion carried unanimously.

5. COMMISSION QUICK BUSINESS – None

6. REPORTS

A. Commissioners' Committee and Lead Reports – As Noted

B. Project Updates from Staff

i. Monthly Project Update Report

Ms. Byrne reported that on November 4 the Meydenbauer Bay panel would be taking a look at the models put together by the artists. The next step will be to put them on display for public comment. The Bellevue library has agreed to display the models between November 9 and 16. The panel will be brought back together on November 18 to review the comments and vote a recommendation to the Commission. As the Commission lead for the project, Commissioner Madan will present the recommendation at the Commission's December 1 meeting. A public hearing will then be conducted, following which the Commission will vote on whether or not the city should proceed to build the recommended art.

Arts Coordinator Scott MacDonald said the application period for the Bellwether exhibition would close on November 8. Close to 250 works have been submitted, and artists are continuing to call and send emails. Confirmation to serve on the jury has been received from Beth Sellars, the curator of Suyama Space in Seattle, and from Mark Anderson, founder and CEO of The Foundry in Walla Walla. Leo Burk, an artist who has done numerous high-profile public artworks in the area, will not be a juror due to a scheduling conflict. Jo-Anne Birnie Danzker, Director of the Frye Art Museum has been asked to serve.

Mr. MacDonald said the lamp post project art has been removed. It was a great addition to the Pedestrian Corridor over the summer months.

The Newport Hills public art project celebrated the opening of *Rain Catchers*. Just one day before the celebration, King County Metro closed off the back of one of the shelters that previously had a panel removed, opening a path leading to the shopping center. It was part of the original plan the panel and Metro approved, but Metro received a single complaint that the shelter was different from the normal design. Metro put the panel back in and closed off the path, leaving a mosaic only three feet from a wall facing the back of the wall, making it necessary to move the stone to a different location. The event itself was wonderful and well attended.

Commissioner Lau Hui said the event was very uplifting and the locals who attended were all very excited. Commissioner Malkin said there were some 40 who attended. Mr. MacDonald said the event was promoted through NextDoor and direct mail to all households in Newport Hills. A local business owner hosted the refreshments.

Mr. MacDonald reported that earlier in the day he reviewed a draft agreement regarding the Lake Hills Puget Sound Energy pole art project. The agreement will go out to Puget Sound Energy and the wireless providers to make sure they will not pull their support for the project.

Sound Transit staff are planning to bring artist Phillip Smith to the next Arts Commission meeting to discuss his concepts for the Wilburton station art.

With regard to the Storefronts project, Mr. MacDonald commented that artist Barbara DePirro, who has been in the last two Bellwether sculpture exhibitions, currently has artwork displayed in the Meydenbauer Center window fronts.

8. ADJOURNMENT

Chair Manfredi adjourned the meeting at 6:21 p.m.

Department of Planning and
Community Development

Action & Discussion

Action and Discussion

Tuesday, December 1, 2015
Meeting: 4:30 pm

Bellevue Arts Commission
Action and Discussion

STart and Wilburton Station Artist Phillip K. Smith III

Sound Transit staff will update the Arts Commission on East Link art. Sound Transit staff will be joined by artist Phillip K. Smith III, who was selected as the artist for Wilburton Station. Mr. Smith will update the Arts Commission on his concepts for his artwork. The Arts Commission is encouraged to ask questions and provide comments.

Tuesday, December 1, 2015
Bellevue City Hall
Room 1E-109

Bellevue Arts Commission
Regular Meeting
Meeting: 4:00 pm

Meydenbauer Bay Park Phase 1 Public Art Design Proposals

Panel Recommendations

At today's meeting Commissioner Vikram Madan will present the panel recommendations regarding three design proposals for public art for Meydenbauer Bay Park Phase 1. Following Commissioner Madan's presentation, the Commission will hold a public hearing, providing a final opportunity for the public to weigh in on the art designs. Following the public hearing, the Commission will be asked to vote on the panel's recommendations.

Background

At its February 10, 2015 special meeting, the commission voted to recommend that staff issue a request for qualifications to artists in the Northwest to apply for Phase 1 of the project (RFQ, Attachment 1). The Commission recognized this project as critical link for establishing an art walk that extends from Meydenbauer Bay to City Hall, one of three strategic goals for the Public Art Program.

Meydenbauer Bay Park once fully developed is described as follows in the RFQ.

"a significant linear open space that will connect the urban core to the shoreline of Lake Washington. The planned park moves from its most natural setting at the west end, maintaining and improving the ecology and public activities in the existing Meydenbauer Beach Park (Phase 1), culminating in an urban connection in the entry plaza at 100th Avenue SE and Main Street in the city's downtown (Phase 3)."

The Park will be developed in Phases. Phase 1 is funded and in the final stage of design development. Three opportunities for art were identified and described in the RFQ. A panel consisting of arts professionals and residents reviewed 42 applicants and selected 9 to interview, three for each opportunity. The panel focused on artists whose past work indicated they could respond sensitively to themes of history, nature, and the design of the park.

Panelist	Affiliation
Vikram Madan	Arts Commission Lead, Artist and Panel Chair
Taidi Fang	Resident
Peter Hummel	Landscape Architect for the project
Doug Landreth	Resident and artist
Debra Westwood	Resident and managing librarian for Bellevue Regional, Lake Hills and Crossroads libraries

The panel selected three artists, and the City contracted with them to develop their designs.

Artist	Assignment
Adam McIsaac	Ravine Area
Stuart Nakamura	Promenade and Pier
Laura Brodax	Beach House

Five community meetings were held. At these meetings the artists presented their work at progressive stages of development, each time incorporating feedback from the panel and other community members. Responding to comments from the panel and other community members present, the artists were encouraged to show two design proposals, one that could be delivered for the original budget amount and another “enhanced” version, and to supply budgets for each.

By the fourth meeting, the panel believed the designs were ready to display to the public for comment. The panel directed staff to present only the enhanced versions to the public with the understanding that if enhancements could not be funded, they could be eliminated.

Panelist Debra Westwood is the managing librarian for the Bellevue Regional Library, the Lake Hills Library and the Crossroads Library. She agreed to show all three of the designs at the Bellevue Regional Library for a week. Twenty-two comments were gathered, and Ms. Westwood reports that many more people stopped to look at the art models and read the proposals. Comments gathered are included in today’s packet.

At the fifth and final panel meeting, panelists reviewed the comments, discussed aspects of the designs once more, and developed and voted on the recommendations to present to the Commission.

Panelist	Affiliation
Vikram Madan	Arts Commission Lead, Artist and Panel Chair
Taidi Fang	Resident
Peter Hummel	Landscape Architect for the project
Doug Landreth	Resident and artist
Debra Westwood	Resident and managing librarian for Bellevue Regional, Lake Hills and Crossroads libraries

The Designs

The designs proposed and recommended by the panel are attached along with a summary explanation of original versus enhanced versions and budgets. Attachments 2-

Budgets Overview

The original total of the three budgets is \$190,000.

The total budget for the enhanced proposals is estimated at \$343,535.

The public art program has sufficient funds to fund the enhanced proposals without impacting budgets for other projects. The significance of the site as the western anchor of the Art Walk as well as an extraordinary regional park and link to the Downtown make this project an appropriate one for significant public art treatment.

Panel Recommendations

Meydenbauer Bay Ravine Guardrails and “Salmon Yaka Chaka” (Salmon He is Coming)

Artist: Adam McIsaac

Assignment: Ravine Area

Panel Recommendation:

The enhanced design developed by artist Adam McIsaac should be implemented with the understanding that both viewpoints should be entirely wrapped in the art guardrails regardless of the number of panels stated in the proposal.

Additional comment from the panel: A finish for the panels still needs to be selected by the artist. Two finishes mentioned by the artist are anodized and powder coated. The panel advises that the artist select the finish that is easiest to maintain and most cost efficient. The panels must weather well and their thickness must be sufficient such that they cannot be deformed by kicking, etc.

“Floating World”

Artist: Stuart Nakamura

Assignment: Pier and Promenade

Panel Recommendation:

The enhanced design developed by artist Stuart Nakamura should be implemented, contingent on resolution of the question of placement of a navigational light, such that all four bird sculptures can be sited at the tops of the pilings. If all four cannot be installed, we recommend that none be installed.

Meydenbauer Bay tile Mural: Revisiting the Past”

Artist: Laura Brodax

Assignment: Beach House

(See design info and illustration attached.)

Panel Recommendation:

The enhanced design developed by artist Laura Brodax should be implemented. The water sections should be colored in a light blue as requested by citizens and proposed by the artist.

Proposed Commission Actions

Move to endorse the panel’s recommendation that the City commission Adam McIsaac to implement the design proposals, “Meydenbauer Bay Ravine Viewpoint Guardrails” and “Salmon Yaka Chaku” as presented to the Arts Commission.

Move to endorse the panel’s recommendation that the City commission Stuart Nakamura to implement the design proposal “Floating Worlds” as presented to the Arts Commission.

Move to endorse the panel’s recommendation that the City commission Laura Brodax to implement the design proposal “Meydenbauer Bay tile Mural: Revisiting the Past” as presented to the Arts Commission.



REQUEST FOR QUALIFICATIONS

MEYDENBAUER BAY PARK

- THE RAVINE
- THE BEACH HOUSE
- THE PROMENADE AND PIER

THREE SITE-RESPONSIVE COMMISSIONS. ARTISTS OR ARTIST TEAMS SUBMIT ONE APPLICATION AND DECLARE WHICH OF THE OPPORTUNITIES THEY ARE MOST INTERESTED IN.

BUDGET | THE RAVINE: \$50,000

BUDGET | THE BEACH HOUSE: \$40,000, PLUS APPLICABLE CONSTRUCTION CREDITS

BUDGET | THE PROMENADE AND PIER: \$100,000, PLUS APPLICABLE CONSTRUCTION CREDITS

[BUDGETS ARE INCLUSIVE OF ARTIST'S FEES FOR DESIGN, FABRICATION, INSTALLATION, SHIPPING, TRAVEL AND 9.5% WASHINGTON STATE SALES/USE TAX]

ELIGIBILITY: OPEN COMPETITION FOR PROFESSIONAL ARTISTS RESIDING IN THE PACIFIC NORTHWEST REGION [WASHINGTON, OREGON, ALASKA, IDAHO, MONTANA AND BRITISH COLUMBIA]

APPLICATION: SUBMISSION OF AN [ONLINE APPLICATION](#) IS REQUIRED FOR THIS OPPORTUNITY

DEADLINE: 5:00 PM PST ON TUESDAY, MARCH 17, 2015

OPPORTUNITIES

The City of Bellevue is seeking artists/artist teams to create site-responsive artwork for Phase 1 of the Meydenbauer Bay Park development, a significant linear open space that will connect the urban core to the shoreline of Lake Washington. The planned park moves from its most natural setting at the west end, maintaining and improving the ecology and public activities in the existing Meydenbauer Beach Park (Phase 1). The waterfront park will culminate in an urban connection in the entry plaza at 100th Avenue SE and Main Street in the city's downtown (Phase 3).

1. **THE RAVINE:** This site and opportunity includes the restored riparian forested "ravine," day-lighted stream and channel and Lakeshore Viewpoints. The artwork for this zone should emphasize natural materials, ecological and habitat restoration, the earliest histories of the place, and encourage a contemplative reflection and appreciate for the proximity of the natural world to the urban environment. This site represents the starting point on the metaphorical "past to future" "natural to urban" time line revealed by the linear, 3-phase park development.



- 2. THE BEACH HOUSE:** This opportunity focusses on the integration of artist-made building parts into the Beach House architecture. Working collaboratively with the architectural firm Salt Studio, opportunities for the selected artist/team include numerous doors/door surfaces, as well as building and column cladding and surfaces. The artwork at the Beach House provides a good opportunity to introduce historical context, and stories and imagery drawn from fishing, bathing/beach, farming/food heritage.
- 3. THE PROMENADE AND PIER:** This opportunity includes some of the most visible and engaging features of the new park within the central waterfront zone area. It is not expected that the selected artist/team will be able to impact all of these features, but rather the artist will concentrate an art intervention within one of them. The artwork within these features should focus on providing a high level of engagement, layered meaning and sense of discovery for park users. Several of these sites/features will be visible by pedestrians and boaters.
 - Pedestrian pier gathering terminus
 - Retaining walls and identity
 - Stormwater channels and outfall

BACKGROUND

The City of Bellevue, Washington has launched Phase 1 of its vision to create a signature park that reestablishes Bellevue as a waterfront city by strengthening connections between the City Center, Old Bellevue with its historic main street, and the Lake Washington shoreline. The city envisions a public park characterized by excellence in design, environmental restoration and stewardship that encourages contemplation, socializing and recreation. The public park will welcome visitors who arrive by car, boat, bus, bicycle, or on foot. The park is planned to be both respite within the city and connection between the city and the lake. Beautifully designed public gathering nodes linked by pedestrian promenades featuring spectacular views of the water and the city skyline will attract visitors year-round. The park design and its uses will respect this remarkable setting, express community environmental values, and support a range of active and passive uses and events.

Phase 1 of the park design development is beginning with a renovation and expansion of the existing Meydenbauer Beach Park. This first phase of the long-term waterfront park development constitutes the west edge and the most naturalized forest and beach environments. The forested **ravine** setting is currently part of an intimate neighborhood park with restrooms, play area, beach, and public pier. The new park development will relocate and expand these recreational uses to the central waterfront zone in order to daylight and restore the ravine's native stream, enhance native vegetation and shoreline wetlands and improve stormwater filtration and quality before the water enters the lake. Limited pedestrian access trails in the ravine and riparian forest and an elevated walkway with viewpoint gathering nodes will provide visitors with opportunities to encounter this landscape without damaging its restoration and re-generation. In the central waterfront zone, the beach park will expand with restored shoreline, swim beach, **beach house** with changing rooms and restroom facilities, play and picnic areas and a **shoreline promenade** that connects the ravine to the marina. The steeply sloped site offers dramatic views to the water, but this topography also necessitates retaining walls that form the spine of the pedestrian pathways. A dramatic and memorable feature of this area will be a curved **pedestrian pier** that encourages access to the lake and terminates in a 35-foot circular gathering area.



Three public art opportunities that take advantage of the unique characteristics of the Phase 1 site are described in this call-for-artists. The public art is envisioned as a way of telling the stories of this part of the waterfront park and revealing layers of meaning and opportunities for engagement and contemplation to its visitors.

The design team consultants for the Phase 1 development include Anchor [QEA Landscape Architecture](#) and Salt Studio.

RESEARCH THE CLIENT

[LINK TO THE MEYDENBAUER BAY PARK MASTER PLAN](#)

[LINK TO THE MEYDENBAUER BAY PARK PROJECT PAGE](#)

[LINK TO THE CITY OF BELLEVUE HOME PAGE](#)

[LINK TO THE CITY OF BELLEVUE ARTS PROGRAM](#)

ARTIST SELECTION SCHEDULE*

Deadline for Entry	Tuesday, March 17, 2015
Selection Panel	Friday, April 10, 2015
Finalist Notification	Monday, April 13, 2015
Finalist Orientation	Thursday, April 16, 2015
Finalist Interviews	Friday, April 17, 2015

PROJECT DESIGN SCHEDULE*

Design Contracts Issued	May 2015
Research/Conceptual Design	June – July 2015
Conceptual Design Presentation	July 2015
Final Design/Documentation	September – October 2015
Building Construction and Artwork Implementation	Fall 2016

In May 2015, the selected artists or artist teams will receive an initial design contracts equal to 20% of the total commission budget. Following design approvals, the artists or teams will receive an implementation contract. Implementation contract amounts may be augmented by applicable construction credits that will be determined during design development.

*Schedules are subject to change

ARTIST SELECTION PROCESS

One panel will select the artists/teams for the three commissions through an open call process coupled with finalist interviews. A selection panel comprised of one Bellevue Arts Commissioner, two art/design professionals, and two community/neighborhood representatives will review the applicants' materials. Advisors to the panel will include representatives from the design team, the city's Project Manager and the city Arts Program Manager. Based on the selection criteria listed below, the panel will select up to three finalists to interview for each of the opportunities.

All finalists will be expected to attend a project orientation session on April 16, 2015 and interview on April 17th. These meetings will be conducted in Bellevue, Washington. At the interview, finalists will discuss past



approaches and working methods with the panel and answer questions relating to this type of project. On the basis of the interviews, the selection panel will then choose one artist or artist team for each of the commissions.

The panel reserves the right to make no selection from the submitted applications or finalist interviews.

Out-of-town finalists will be reimbursed for reasonable travel and lodging expenses to attend the interview and orientation in Bellevue, Washington. If applying as a team, the allowance for travel may not fully reimburse all team members.

SELECTION CRITERIA

The artists/teams will be selected based on the following qualifications/criteria:

- Quality and strength of past work as demonstrated in submitted application materials;
- Strong conceptual skills and an ability to reflect or reveal site context, history and story of place in compelling ways;
- Relevant previous experience such as budget, materials use, site context, and/or integrated approach to developing artworks within architecture or landscape;
- A command of dynamic spatial relationships and an ability to activate high use public spaces;
- Availability to begin work in May 2015.

Additional consideration will be given to submissions from artists who have not received permanent public art commissions from the City of Bellevue in the past three years.

ELIGIBILITY

This project is open to professional artists residing in the Pacific Northwest region, which includes the states of Alaska, Idaho, Montana, Oregon and Washington and the province of British Columbia in Canada. Qualified artists will have proven experience developing integrated artworks, specifically for civic projects.

City of Bellevue staff and its Arts Commission members, selection panel members, project personnel and immediate family members of all of the above are not eligible.





TEL 206.296.7580
V/TTY 206.296.8574
FAX 206.296.8629
101 PREFONTAINE PL S
SEATTLE WA 98104
WWW.4CULTURE.ORG

APPLICATION MATERIALS & INSTRUCTIONS

ARTISTS APPLYING FOR THIS PROJECT MUST SUBMIT THE FOLLOWING MATERIALS ONLINE USING THE APPLICATION-SPECIFIC LINK: [HTTP://4CULTURE.ORG/APPLY](http://4culture.org/apply)

PROFILE — Applicant contact information.

RESUMÉ — Two-page (maximum) resume. Artist teams should include two-page resumes for all members as one document. Keep the formatting as simple as possible. PDF format is preferred; text (.txt) files will also be accepted.

Below are some suggested items to include in your resume:

- **Contact Information:** At the top of each page, include your name, address, phone number and email address.
- **Education:** List all academic degrees earned. Also include periods of study at schools or universities attended without completing a degree.
- **Professional Experience:**
 - **Commissions:** List commissions with details including the project or artwork title, location, commissioning agency, project partners, project budget and date of completion.
 - **Exhibitions:** List the title of the exhibition, the exhibition space, and the city and state where the exhibition was presented. You may want to indicate if it was a solo show, group show, juried exhibition or invitational exhibition, etc.
 - **Collections:** List private collections, corporate collections, permanent public collections, etc. You may want to ask permission to list a private owner of your work.
 - **Experience:** You may also consider listing experience that is relevant to your professional art-making career including teaching, technical experience, residencies and lectures.
- **Honors, Awards & Grants:** List honors and awards, grants or other recognition of merit.
- **Bibliography:** List books, magazines, newspapers and catalogues that reference your artwork.
- **Professional Affiliations:** List professional organizations, national, regional, and local, to which you belong.

STATEMENT OF INTEREST — *Please indicate the site(s) that most interests you at the beginning of your Statement of Interest: “RAVINE”, “BEACH HOUSE”, “PROMENADE” or “ALL”.* 300 words (or less) that explain why the artist/team is interested in one or all of these opportunities and how their practice relates to this project and the posted selection criteria. If applying as a team please address how team members work together in the statement of interest. Applicants are NOT asked to submit a proposal as part of the application.

WORK SAMPLES — Artists are encouraged to submit images of past work that best illustrate their qualifications for this project. Applicants must submit 10 work samples (no composites). Images will be projected one at a time during the application material review session. If applying as a team, the team also submits 10 work samples total.



DIGITAL WORK SAMPLES — Upload JPG files only; images must be 1920 pixels on the longest side and at least 72 dpi. Files must be less than 2MB in size. Once uploaded, the system will automatically label the files with your last name, first initial, and a number indicating viewing order. Select professional quality images with interesting perspectives and strong color saturation.

Applicants will be required to list the title of the artwork/project name, completion date, medium and dimensions. Optional fields include project location, commissioning agency, budget, project partners (architecture, engineering, and/or landscape architecture firms, etc.), photo credit, and copyright owner. Applicants are encouraged to provide a brief description (75 words or less) of each work sample.

After the first entry, text fields will automatically populate with information from the previous work sample upload. This is meant to help expedite the inclusion of multiple images per artwork/project and can be easily changed by highlighting and typing over the text when you are ready to add a new work sample. All images and descriptive text can be reviewed, edited or deleted by clicking on the file name in the left hand progress navigation.

APPLICATION PREVIEW — Select the Application Preview link to save the entire application as a draft or submit it for consideration. By selecting "Save as Draft" you can continue to access and edit content through the "My Applications" tab until the deadline for submissions. Once you select "Save & Submit" you will no longer be able to make changes. All applications must be submitted to be considered.

DEADLINE: **REQUIRED MATERIALS MUST BE RECEIVED NO LATER THAN 5:00 P.M. [PACIFIC STANDARD TIME] ON TUESDAY, MARCH 17, 2015.**

QUESTIONS?

For questions regarding the project and City of Bellevue Arts Program, please contact:

Mary Pat Byrne
mpbyrne@ci.bellevue.wa.us
425.452.4105

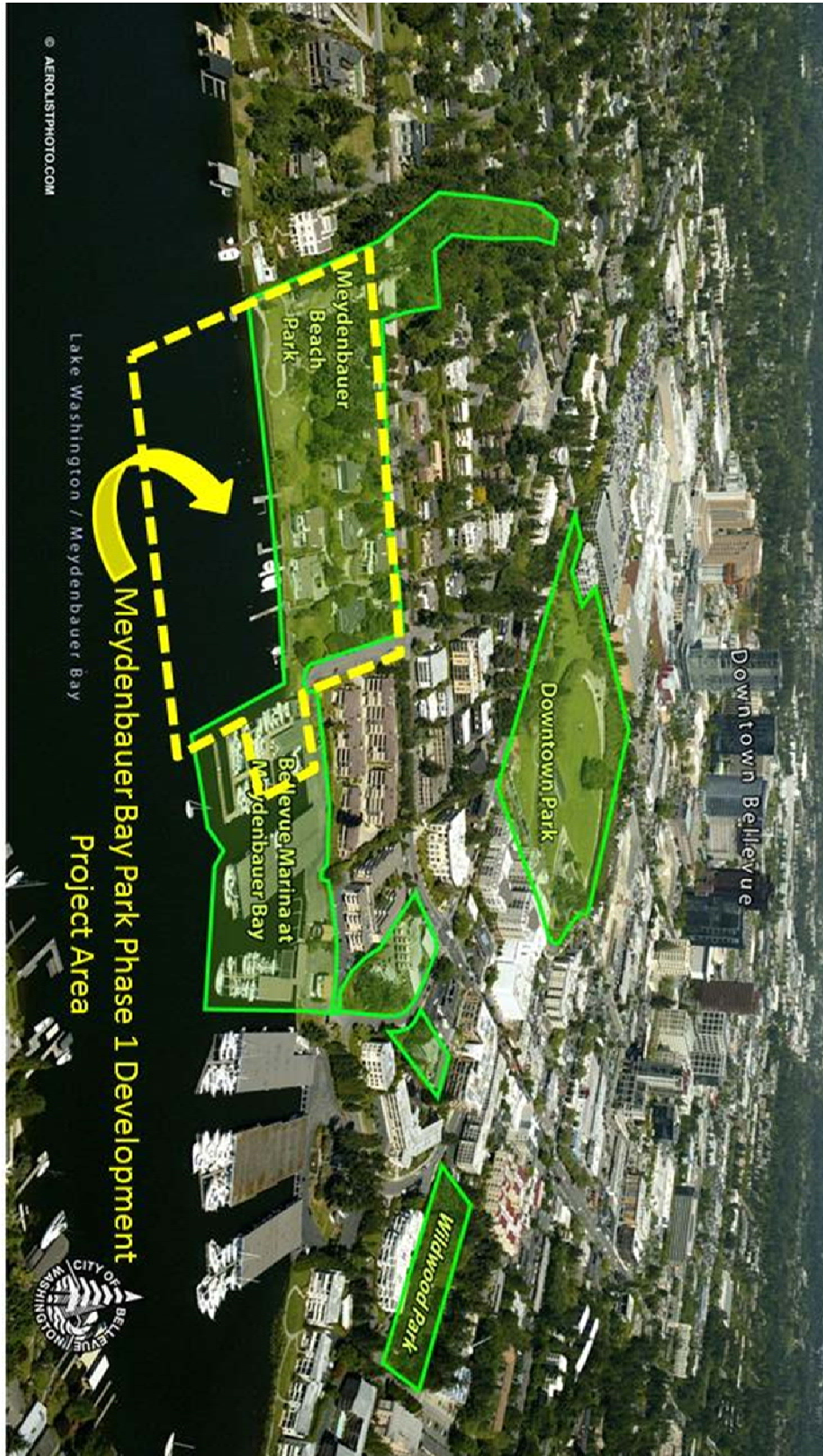
For questions regarding the application process please contact:

Cath Brunner
Cath.brunner@4culture.org
206.263.1596

Ryan Feddersen
Ryan.feddersen@4culture.org
206 263.1587

**IF YOU NEED HELP WITH YOUR APPLICATION OR HAVE QUESTIONS, PLEASE CONTACT US.
PLEASE DO NOT WAIT UNTIL THE DEADLINE TO CALL OR START THE APPLICATION PROCESS.**









Your Comments

Art Proposals for Meydenbauer Bay Park Phase 1

It is proposed to commission the all of the artworks proposed by these three artists. After reviewing their models and other information, Please share your comments with us.

Ravine view points Guardrails & Bronze Sculpture

Excited to eventually see the Salmon sculpture.

Guardrails are ok, but not intricate enough to engage me on site. Powder-coated aluminum sounds like it will age relatively poorly.

Your concept depicts the outline of the culvert, perhaps a stylized culvert end in bronze could serve as a portal to view the park through

Historic Tile Murals: Revisiting the Past

Mural tile design looks beautiful.

Could see future added details via light projection to add subtle water effects, waving plants.

Hopefully replacement tiles will be possible to recreate as needed for maintenance purposes.

(OVER)

Promenade Oars and Paddles Gateways
Pire Cap Herons and Eagles sculptures
Sundial/Compass

Paddle sculptures seem likely (per model) to be very stylized interpretations of oars. But if the symbology is more work than its worth to decipher on a casual park visit.

I would suggest more of a phantom Salish canoe overhead, with the full set of oars dipping into stylized "water" as part of the sculpture. The viewer seeing the canoe from the perspective a whale or a fish might have of a boat paddling overhead.

Alternatively, the bird crowned upper bars might be shaped to accurately show the path the paddle describes when being drawn through a stroke.

More comments/information?

Contact the City's Arts Program:

mpbyrne@bellevuewa.gov

425-452-4105





Your Comments

Art Proposals for Meydenbauer Bay Park Phase 1

It is proposed to commission the all of the artworks proposed by these three artists. After reviewing their models and other information, Please share your comments with us.

Ravine view points Guardrails & Bronze Sculpture

Nindy done!

Like the salmon & carving
Like it best

Historic Tile Murals: *Revisiting the Past*

Like the historic tile pictures
Like it 2nd best!

(OVER)

Promenade Oars and Paddles Gateways
Pire Cap Herons and Eagles sculptures
Sundial/Compass

I don't like these - they are cold &
intrusive for a park

The birds seem to be on garbage cans
The sundial looks like a movie cola drink
with a straw

The oars seem ~~very~~ unattractive, & like
someone could hurt themselves on them

More comments/information?
Contact the City's Arts Program:
mpbyrne@bellevuewa.gov
425-452-4105





Your Comments

Art Proposals for Meydenbauer Bay Park Phase 1

It is proposed to commission the all of the artworks proposed by these three artists. After reviewing their models and other information, Please share your comments with us.

Ravine view points Guardrails & Bronze Sculpture

elements
the history

I like incorporating different images of the different elements associated w/ the history of the area. I'm having trouble visualizing how it will be placed.

Historic Tile Murals: Revisiting the Past

I like depicting past pictures into the mural.

(OVER)

Promenade Oars and Paddles Gateways
Pire Cap Herons and Eagles sculptures
Sundial/Compass

*It ties it to the sea
& key elements*

*Very well integrated
designs*

More comments/information?
Contact the City's Arts Program:
mpbyrne@bellevuewa.gov
425-452-4105





Your Comments

Art Proposals for Meydenbauer Bay Park Phase 1

It is proposed to commission the all of the artworks proposed by these three artists. After reviewing their models and other information, Please share your comments with us.

**Ravine view points Guardrails &
Bronze Sculpture**

Historic Tile Murals: *Revisiting the Past*

I like the fish. ~~AK~~

(OVER)

**Promenade Oars and Paddles Gateways
Pire Cap Herons and Eagles sculptures
Sundial/Compass**

More comments/information?
Contact the City's Arts Program:
mpbyrne@bellevuewa.gov
425-452-4105





Your Comments

Art Proposals for Meydenbauer Bay Park Phase 1

It is proposed to commission the all of the artworks proposed by these three artists. After reviewing their models and other information, Please share your comments with us.

Ravine view points Guardrails & Bronze Sculpture

All the artwork is beautiful, fitting, and speaks to both history and the future of Seattle, the Pacific Northwest and the East side

Historic Tile Murals: *Revisiting the Past*

The tile mural is also beautiful and speaks to both history and the future.

(OVER)

Promenade Oars and Paddles Gateways
Pire Cap Herons and Eagles sculptures
Sundial/Compass

All of the Artwork does a fine
job of speaking to both the past
and the future here.

More comments/information?
Contact the City's Arts Program:
mpbyrne@bellevuewa.gov
425-452-4105





Your Comments

Art Proposals for Meydenbauer Bay Park Phase 1

It is proposed to commission the all of the artworks proposed by these three artists. After reviewing their models and other information, Please share your comments with us.

Ravine view points Guardrails & Bronze Sculpture

Love the guardrails

Historic Tile Murals: *Revisiting the Past*

Titles - subject to package

(OVER)

Promenade Oars and Paddles Gateways
Pire Cap Herons and Eagles sculptures
Sundial/Compass

Sundial/compass great

all the sculptures are
fabulous

More comments/information?
Contact the City's Arts Program:
mpbyrne@bellevuewa.gov
425-452-4105





Your Comments

Art Proposals for Meydenbauer Bay Park Phase 1

It is proposed to commission the all of the artworks proposed by these three artists. After reviewing their models and other information, Please share your comments with us.

Ravine view points Guardrails & Bronze Sculpture

I like the sculpture but
the guardrails are too busy

Historic Tile Murals: *Revisiting the Past*

Love the tiles but
they need to incorporate
something more multicultural
if possible

(OVER)

Promenade Oars and Paddles Gateways
Pire Cap Herons and Eagles sculptures
Sundial/Compass

~~Like~~

~~So~~ ~~So~~ Lukewarm on this -
Harder to visualize

More comments/information?
Contact the City's Arts Program:
mpbyrne@bellevuewa.gov
425-452-4105





Your Comments

Art Proposals for Meydenbauer Bay Park Phase 1

It is proposed to commission the all of the artworks proposed by these three artists. After reviewing their models and other information, Please share your comments with us.

Ravine view points Guardrails & Bronze Sculpture

This one is iffy (for me anyway). The guard rails seem like a somewhat awkward blend of form and symbol. That is, while the symbolic elements are sort of obvious*, they don't cohere very well aesthetically. ~~IMHO~~ IMHO. The salmon is OK — it will look handsome in bronze. * i.e., literal

Historic Tile Murals: Revisiting the Past

Absolutely stunning. Love the concept of Japanese scroll narrative blended with the scenes from vintage photographs.

(OVER)

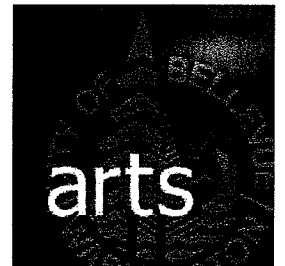
Promenade Oars and Paddles Gateways
Pire Cap Herons and Eagles sculptures
Sundial/Compass

Very successful — The balance of
abstractions + representation is
very fine — forms are elegant +
sleek — The only flaw, to my eye,
is that the compass looks like a giant
take-out coffee cup. But that may only
be the impression conveyed by the model.

No doubt it will look good at the proper
scale + in the intended materials.

Overall, though, a sophisticated proposal,
quite beautiful + carefully conceived.

More comments/information?
Contact the City's Arts Program:
mpbyrne@bellevuewa.gov
425-452-4105





Your Comments

Art Proposals for Meydenbauer Bay Park Phase 1

It is proposed to commission the all of the artworks proposed by these three artists. After reviewing their models and other information, Please share your comments with us.

Ravine view points Guardrails & Bronze Sculpture

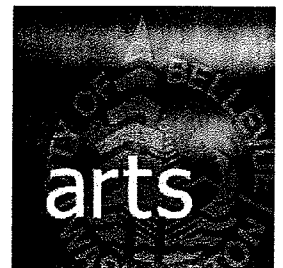
Please Make the fish
Bronze bigger than
proposed on bigger
granite Platform.

Historic Tile Murals: *Revisiting the Past*

(OVER)

**Promenade Oars and Paddles Gateways
Pire Cap Herons and Eagles sculptures
Sundial/Compass**

More comments/information?
Contact the City's Arts Program:
mpbyrne@bellevuewa.gov
425-452-4105



Byrne, Mary Pat

From: Keith Pleas <keithp@guideddesign.com>
Sent: Monday, November 16, 2015 4:56 PM
To: Byrne, Mary Pat
Subject: RE: Reminder: Meydenbauer Art Panel Vote Wed.

Thanks – I'll be there.

BTW, if it didn't come across, I'm not a fan of the birds on the pilings. Having to make the pilings tall to keep the birds out of reach, maintenance on the birds, and the fact that they are not natural scale – all of these seem like major negatives to me for a thing that is basically a distraction from what is a capstone feature of the park.

Anyway, that's my opinion. 😊

Keith

Byrne, Mary Pat

From: Robin Root James <robinr@johnlscott.com>
Sent: Tuesday, November 17, 2015 10:34 AM
To: Byrne, Mary Pat
Cc: Cole, Robin
Subject: Re: Reminder: Meydenbauer Art Panel Vote Wed.

Thank you for this info!

We both feel all the art should be much more focused on the history of the place. The Bellevue ferry was right there and Bellevue has so little reference or public information about our history!

Meydenbauer Bay Ravine Guardrails and Salmon Yaka Chaku

Artist: Adam McIsaac

Assignment: Ravine

Original Proposal:

Aluminum guardrail panels surrounding two viewpoints overlooking the Ravine. Imagery includes native plants and trees, Chinook salmon and references to the whaling industry.

Budget: \$50,000

Enhanced Proposal

Add freestanding, 30" x 30" cast bronze sculpture of a salmon on granite base

Budget, enhanced proposal: \$72,525

Excerpts from Artist Statement (See full statement & description in binder on table.)

Meydenbauer Bay Ravine Guard Rails

Celebrating the natural world of Meydenbauer Bay, these ornately decorated guardrails will serve both form and function. The images display the indigenous plant life of the area, embrace the wildlife the park aims to enhance, and celebrate the historical commerce and occupations of the people that have resided there.

Salmon Yaka Chaku (Salmon He is Coming)

A major focus of the Ravine enhancement is to daylight the stream that is currently piped through a culvert. Daylighting the stream and enhancing the mouth where it flows into Lake Washington will create spawning habitat for wild Chinook salmon. Salmon Yaka Chaku anticipates the salmon's return and will serve as a greeting to guests entering the west end of the park through the Ravine.

Illustrations

Following are illustrations of the two guardrail panels' designs. A model of the proposed "Salmon Yaka Chuka" will be available at today's meeting.





Meydenbauer Bay Ravine Guardrails

Adam McIsaac

Theme

Celebrating the natural world of Meydenbauer Bay these ornately decorated guardrails will serve both form and function. The images display the indigenous plant life found in the Meydenbauer Bay area, embrace the wildlife the park aims to enhance and celebrate the historical commerce and occupations of the people that have resided here. These educational panels will serve to teach us about Meydenbauer Bay's past, present and future.

Imagery

Meydenbauer Bay is home to a diverse array of plant and animal life. Oregon Grape, Big Leaf Maple, Dogwood and Bracken Ferns are the plants that are represented on these 30" x 5' long cut-aluminum, powder coated panels. In addition, Chinook salmon and the important whaling tradition is also displayed throughout the guardrails.

Oregon Grape

Oregon Grape was used by the indigenous peoples of the area for dyes for textiles as well as many medicinal uses.

Big Leaf Maple

The hard wood of the Big leaf maple was used for many carving projects, including oars, bowls, and furniture by both native people and early settlers.

Dogwood

Dogwood was used medicinally for fever reducer and the hard wood was used for arrow shafts among other tools. The flowering of the Dogwood also marked the return of the Chinook salmon run - one of the main target species of the Ravine enhancement.

Bracken Fern

Bracken fern shoots were collected in the spring and steamed and eaten for the high vitamin content by both Native and early European settlers.

Chinook Salmon

The Chinook salmon run in Lake Washington is endangered. The main purpose of the Ravine enhancement is to provide spawning and fry habitat for the migrating salmon.

Whaling

Whaling was a huge part of Meydenbauer Bay's history. The freshwater of the Bay was home to a fleet of whaling ships during the winters of the 1920's and 1930's. Both Native American and early settlers prized whales for their fat that they rendered into oil.

Salmon Yaka Chaku

Bronze Salmon Sculpture

Adam McIsaac

Theme

A major focus of the Ravine enhancement, located on the West end of the park is to daylight the existing stream that is currently piped through a culvert. Day-lighting the stream and enhancing the mouth where it flows into Lake Washington will create spawning habitat for wild Chinook salmon. When returning from the ocean to spawn Chinook salmon will create what is called a Redd in the gravel. This Redd will form a nest where the female salmon will lay her eggs. The freshly oxygenated water from the stream will pass over the Redd to oxygenate the young fry developing within.

Imagery

Salmon Yaku Chaku, "Salmon He is Coming"

This 30" x 30" bronze will serve as a greeting sculpture to guest entering the west end of the park through the Ravine. The bronze salmon depicts one of the Native American styles of art that was practiced by the Salish people living in the Meydenbauer area. The Bronze will be secured on top of a Granite boulder and placed at the intersection of two walking paths above the stream that is to be day-lighted.

Floating Worlds

Artist: Stuart Nakamura

Assignment: Promenade & Pier

Proposals' Overview:

Original Proposal:

Oars and Paddles Gateways

Sculptures of Salish-inspired and whaling style standing oars bookending Promenade, supported by concrete footings with decorative water designs and text

Budget: \$100,000

Proposal Enhancements:

Pile Cap Sculptures

1. Stainless steel sculptures of 2 herons and 2 eagles in flight attached to 4 pile caps surrounding the pier's end circular platform

Estimated Budget: \$20,174

2. Sundial in center of pier's end platform, with bird imagery cut into a reverse-conical base, and echoing the pier cap sculptures; downwardly lit from within to illuminate bird's outlines

Estimated Budget: \$13,946

** If Galaxy Black chosen, add \$2,600; if Black granite chosen, add \$1,950

If granite is not chosen and apron is black powder-coated s/s, subtract \$ 2,200

Budget Summary for *Floating Worlds*

Component	Estimated Budget
Oars and Paddle Gateways – original proposal	\$100,000
Pile Cap Sculptures – Enhancement A	\$20,174
Sundial/Compass with Galaxy Black granite – Enhancement B (see less expensive price options above at **)	\$16,546
Total	\$136,720.00

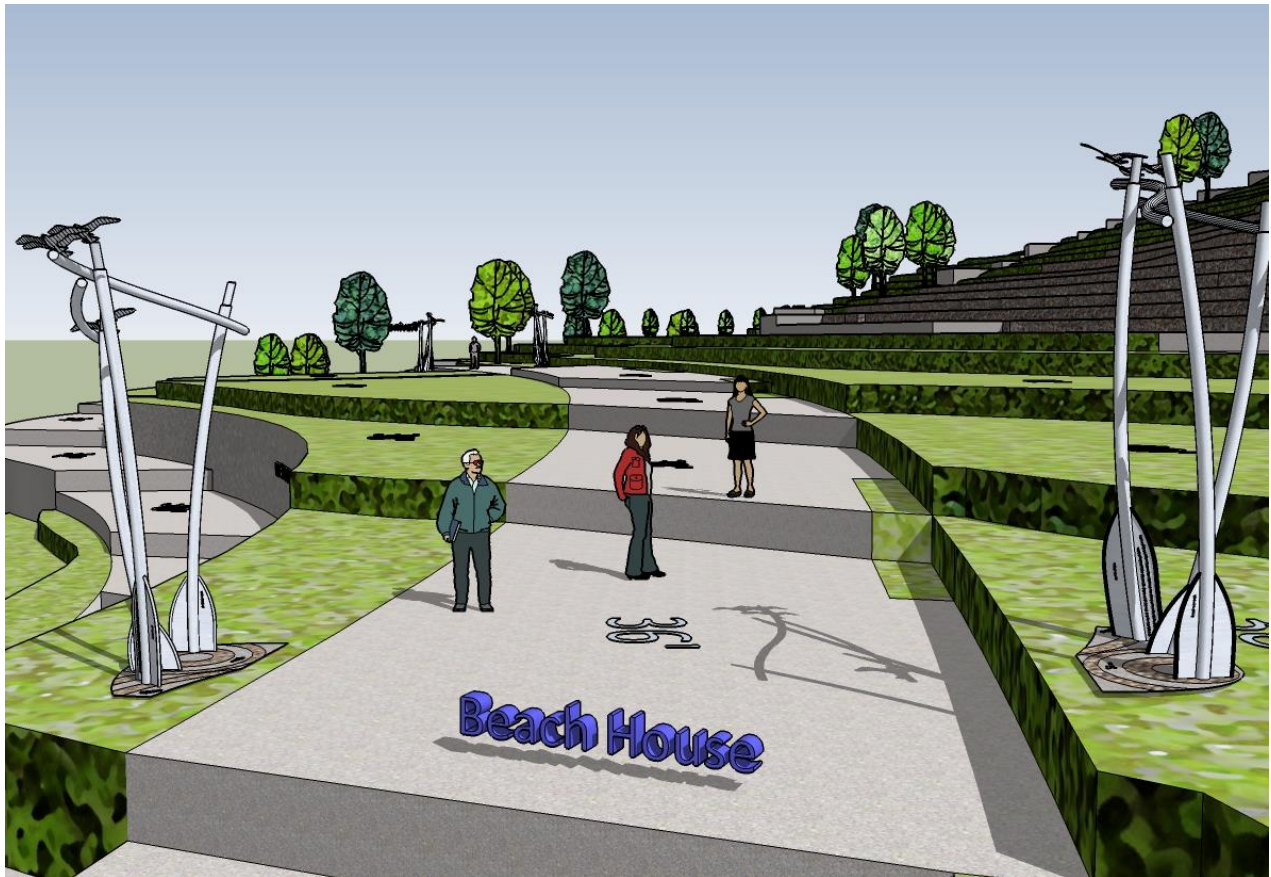
Panel Recommendation:

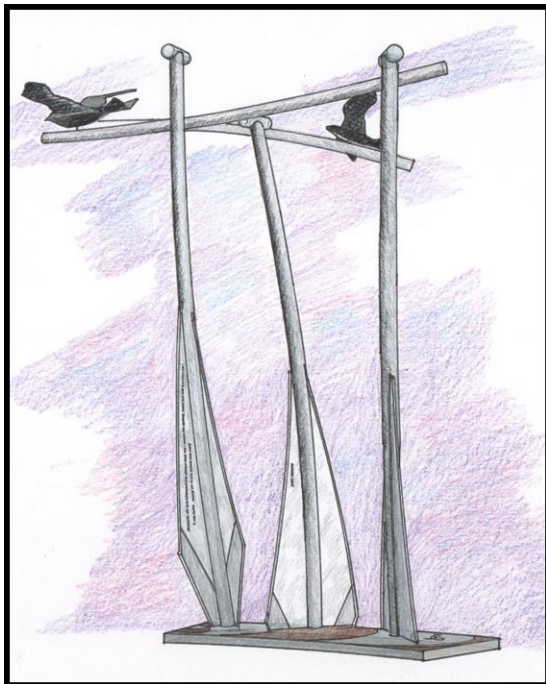
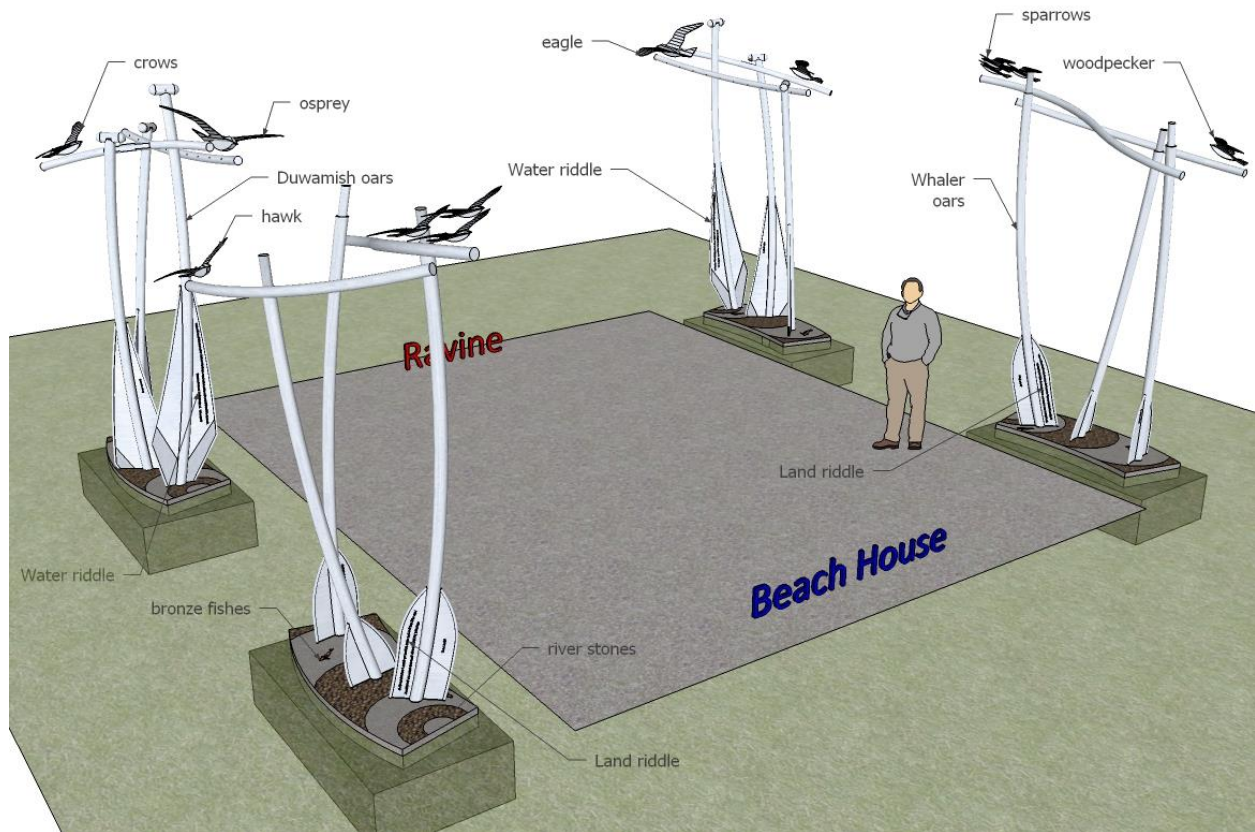
The enhanced design developed by artist Stuart Nakamura should be implemented, contingent on resolution of the question of placement of a navigational light, such that all four bird sculptures can be sited at the tops of the pilings. If all four cannot be installed, we recommend that none be installed.

Floating Worlds: Oars and Paddles Gateways Illustrations

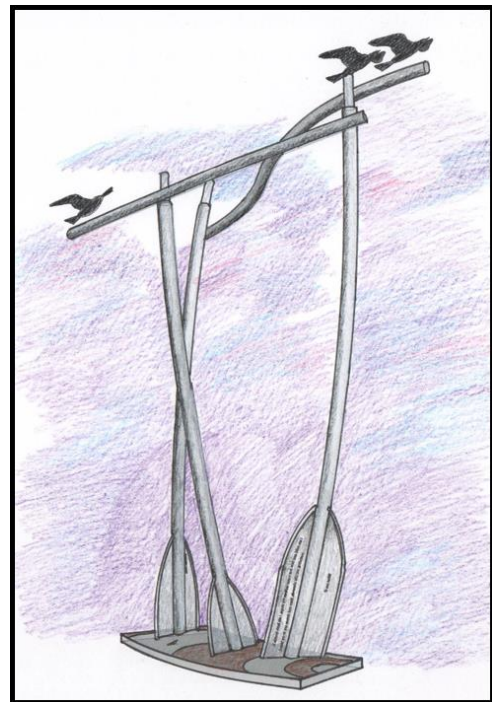
Artist: Stuart Nakamura

Assignment: Pier and Promenade





Salish inspired Paddles

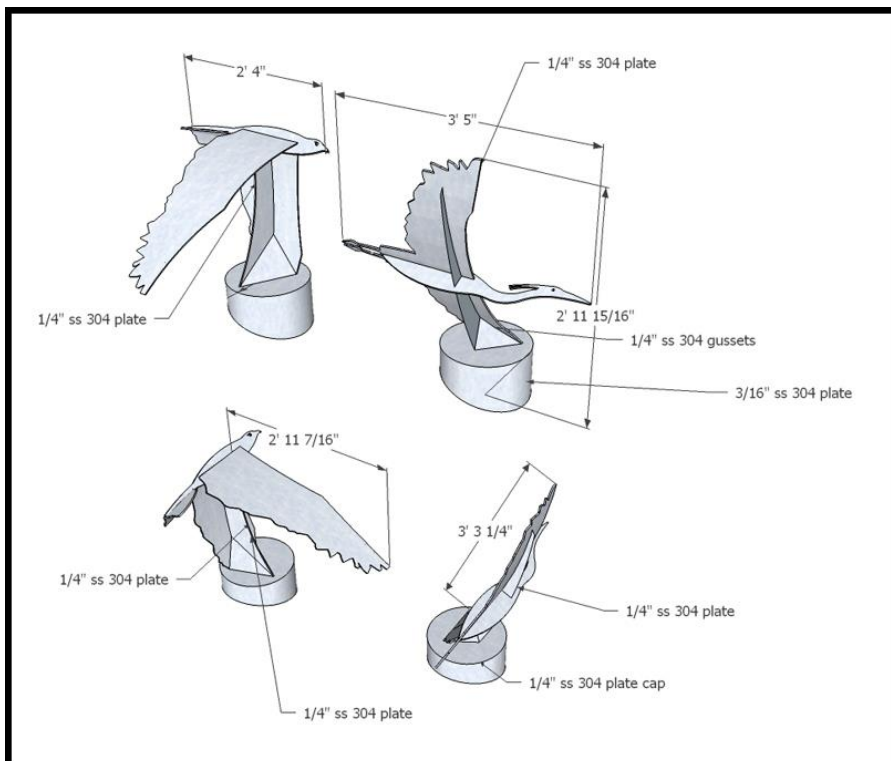
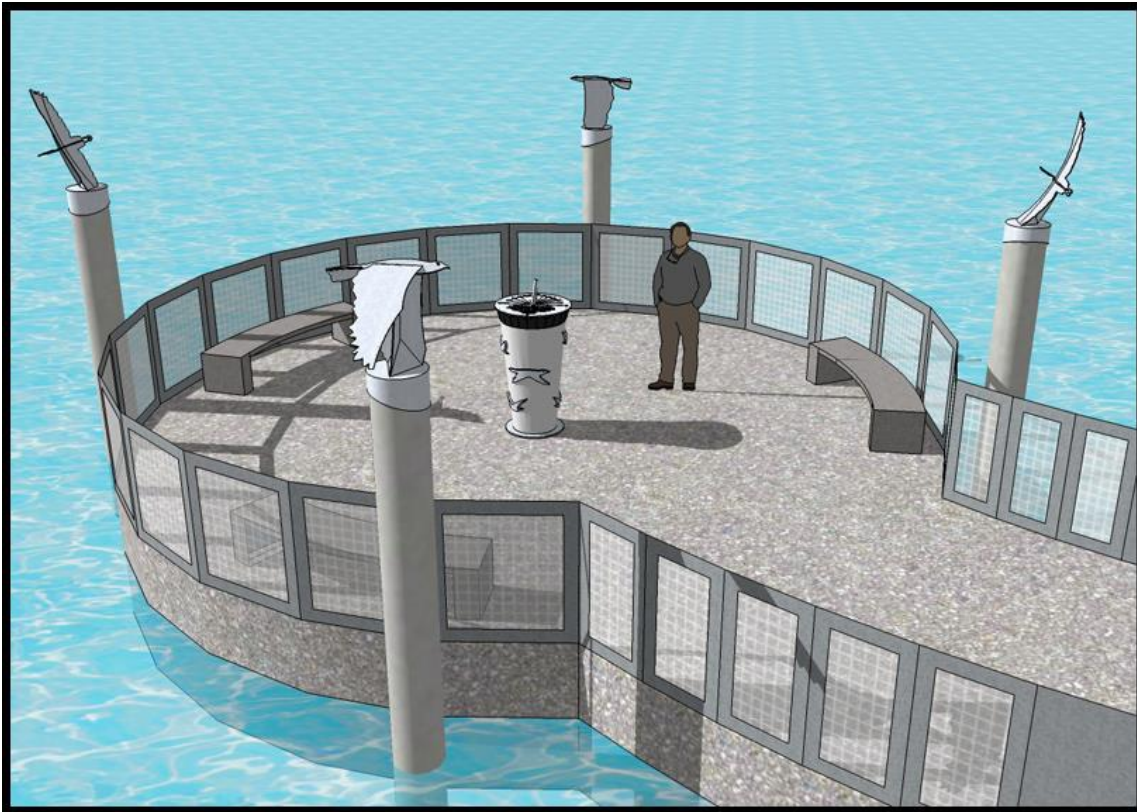


Whaler Oars

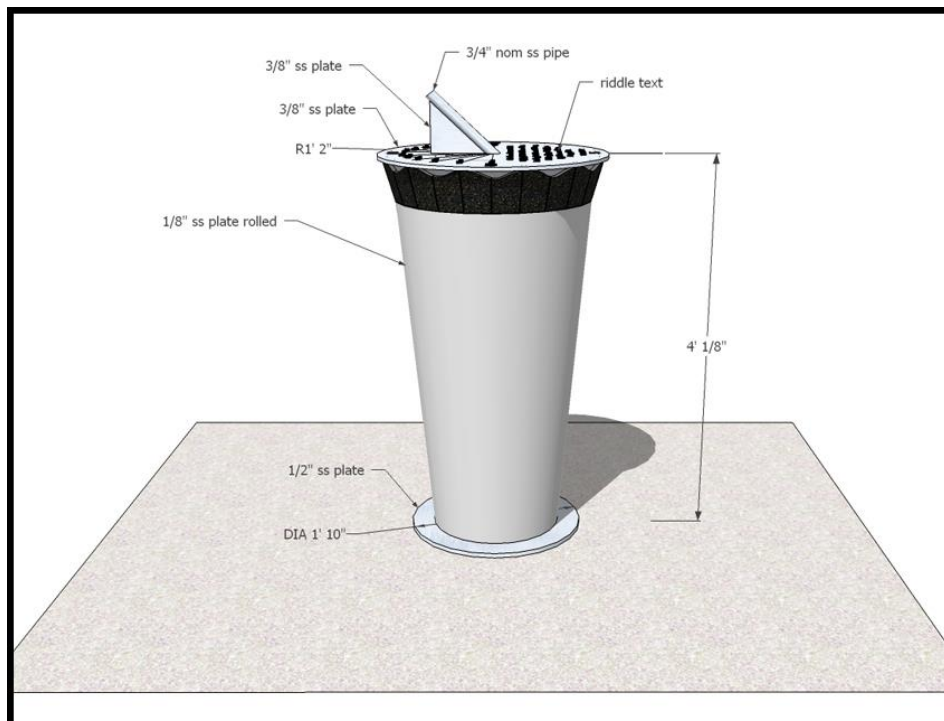
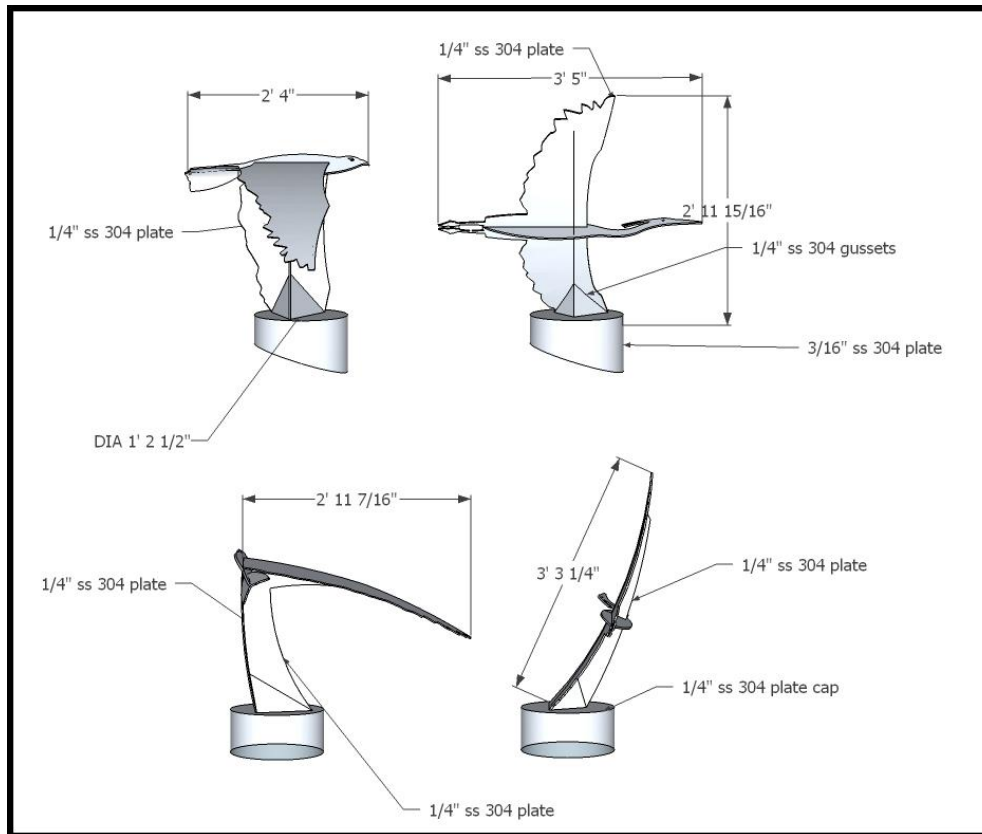
Floating Worlds: Pier Enhancements Illustrations

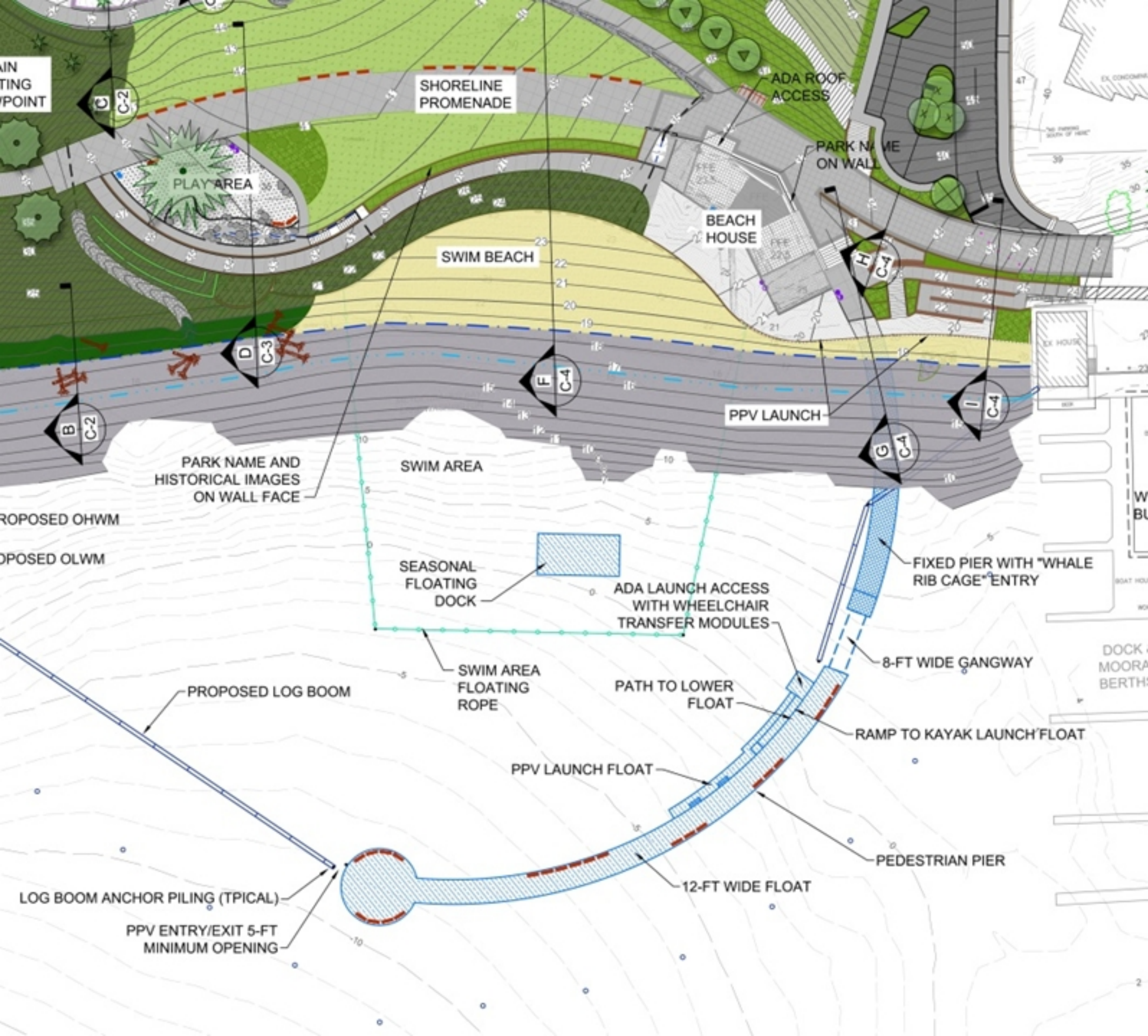
Artist: Stuart Nakamura

Assignment: Pier and Promenade



Floating Worlds: Pier Enhancements Illustrations





Meydenbauer Bay Tile Mural: Revisiting the Past

Artist: Laura Brodax

Assignment: Beach House

Components

Original Proposal:

Two murals totaling 42 ft. in length, 3 ft. high, set into the wall behind the beach house, left and right sides

Material: Ceramic Tiles

Budget, Original: \$40,000

Enhanced Proposal:

Mural length extended on both sides to total 75'.

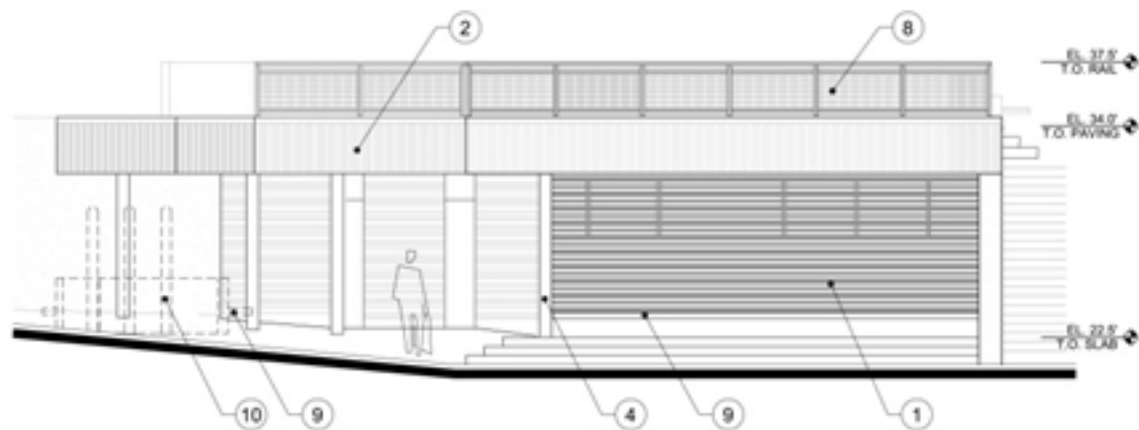
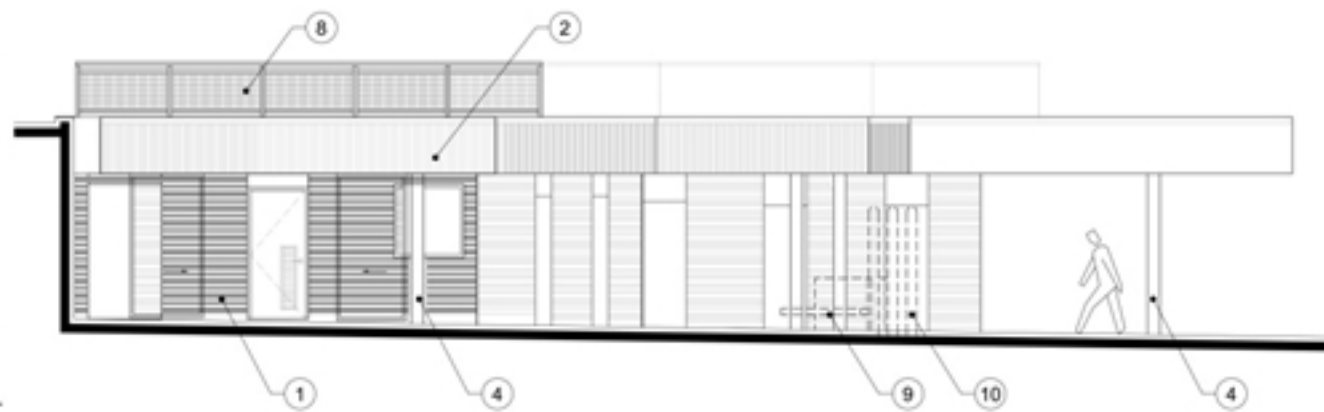
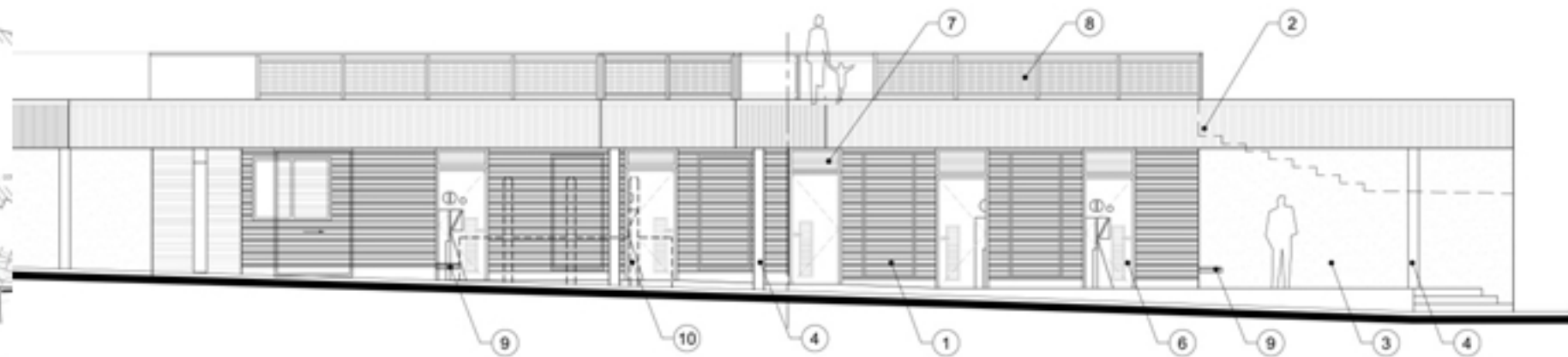
Budget, Enhanced: \$63,090

Excerpt from Artist Statement (See full statement and illustrations in artist's book.)

This historical tile mural is a narrative homage to the rich historical past of the bay. Inspired by the compelling horizontal structure of the beach house facility and the concept of Japanese story-telling by the screen or scroll format, the ceramic mural interprets the recreational use of the bay with an illustrated photo montage of vintage photographs of the Bay from early twentieth century. Its mood is peaceful and timeless.

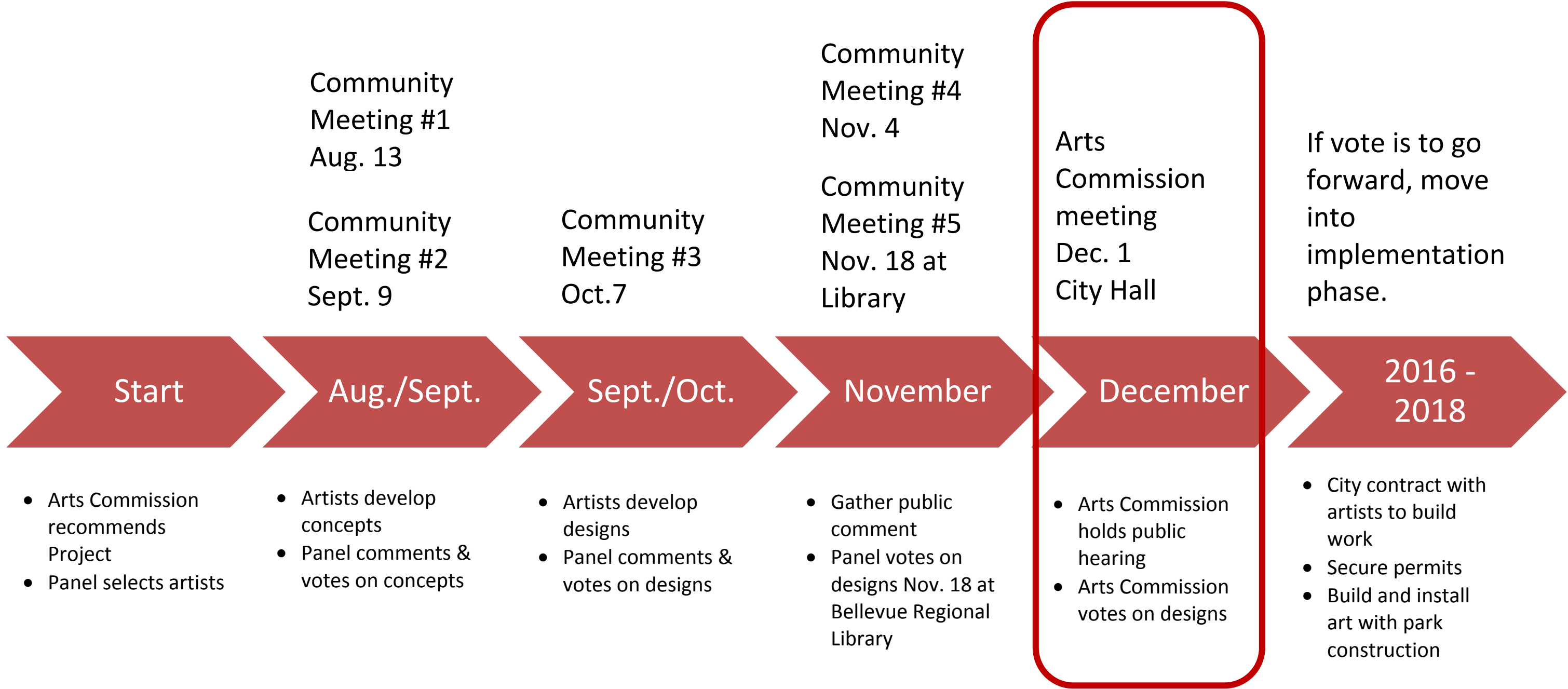
Illustrative segment from 75'l x 3'h tile mural





LEGEND		
#	ELEMENT	MATERIAL
1	WOOD SIDING	1x4 & 1x6 HOR. CEDAR SMOOTH SLATS
2	WOOD SIDING	1x VERT. CEDAR SMOOTH SLATS
3	EXPOSED STRUCTURE	CONCRETE
4	COLUMN	CUSTOM STEEL COVER
5	PANELS	TRANSLUCENT
6	DOOR	STEEL
7	LOUVER	STEEL
8	RAILING	SS W/ SPA HANDRAIL
9	BUILT-UP BENCH	WOOD
10	SHOWER	MNFR
		COLOR / FINISH
		TBD
		TBD
		CLEAR
		TBD
		WHITE
		PAIN COLOR TBD
		PAIN COLOR TBD
		MNF
		TBD
		MNFR

Meydenbauer Bay Public Art Project – Next Steps



Quick Business

Tuesday, December 1, 2015

Bellevue Arts Commission

1. The Arts Commission will be asked to consider rescheduling their January 5th Arts Commission meeting to January 12th.
- 2.
- 3.

Department of Planning and
Community Development

Reports

Tuesday, December 1, 2015

Bellevue Arts Commission

Project Updates

Art Walk

Meydenbauer Bay Waterfront Expansion

November 4, 2014: At its October 28th special meeting the commission voted to recommend that staff pursue developing a public art project proposal outlining key opportunities, themes and estimated budgets primarily for phase one of the park's development. Staff has contacted 4Culture to explore contracting with them to manage the public process for selecting artists for phase one.

December 2, 2014: Parks staff will be hosting an Open House for the Phase 1 Design on Wednesday, December 3rd from 5:30-7:30 PM at Bellevue City Hall. Staff met with public art project management contractor from 4Culture to discuss managing artist selection for the project.

January 20, 2015: Staff has hired Cath Brunner of 4Culture to manage the artist selection process. Tentatively, we expect a jury panel to be assembled in February and artist selection to be complete in March.

February 10, 2015: At today's meeting staff will present a draft of the Call to Artists and discuss primary art opportunities, the proposed budget associated with each opportunity, and the artist selection process.

April 7, 2015: An artist selection panel will meet on April 10th at 4Culture to review submitted artist applications and portfolios and select a short list of artists to interview for designated opportunities. On April 17th, interviews with the selected artists will be held at Bellevue City Hall and final recommendations will take place. Selections will be finalized once the artists are under contract. 4Culture contractor reported that a very good selection of 40+ artists have applied.

May 5, 2015: Artist selection for Phase 1 was completed. Staff is working on contracting with the selected artists. There will be more information presented at today's meeting.

August 4, 2015: Staff continues to finalize contracts with the selected artists. An artist orientation for selected artists took place on July 30th. There will be a community meeting at Bellevue City Hall in room 1E-108, on Wednesday, August 5th, at 6:30 pm.

September 1, 2015: Staff continues to finalize contracts with the selected artists. The first community meeting took place at Bellevue City Hall on August 5th. At the meeting, artists selected for Phase 1 presented examples of their previous work to a small group of residents. A second community meeting is scheduled at Bellevue City Hall in room 1E-112, on Wednesday, September 9th, at 6:30 pm. At this

meeting artists will present alternative concepts for the art and the community will be asked to provide feedback. The panel will attend and, based on community response at the meeting, recommend which alternative concept from each artist should be further developed.

October 6, 2015: Artists presented their initial concepts for art to panel members and the public on September 9. After listening to the artists and comments from community members present at the meeting, the panel gave each artist direction on which concepts to develop. The artists will return in October to present their designs.

November 3, 2015: The design development process is progressing. On October 7th the panel and community members reviewed and commented on the updated designs. Responding to comments, the artists presented both an on-budget and enhanced versions of their proposals. The panel provided further direction to the artists regarding refining their proposals. On November 4th, the artists will bring their completed models and design illustrations. The panel will be asked to vote whether the designs accurately reflect the panel's input and if they do, request that staff put the models on public display to gather comments from the public. Assuming the panel's vote is to begin the public comment gathering process, the design proposals will be displayed at the Bellevue Regional Library for about 10 days. On November 18, the panel will reconvene, review the community feedback, and vote on their recommendation to the commission. Staff will describe the timing and next steps for the Commission at today's meeting.

Update, December 1, 2015: A public hearing will be held at today's meeting.

Bellwether 2016: Confluence

October 6, 2015: With the application up on callforentry.org, staff is working to promote the show to potential artists. The application is scheduled to officially close on October 30th. Staff has hired Tanja Baumann Communications LLC to research potential jury members. Ms. Baumann managed the marketing campaign for Bellwether 2014 and is familiar with the needs of the exhibition. Staff is planning to have the jury identified prior to the closing of the application period.

November 3, 2015: Staff has received confirmation that Mark Anderson from The Foundry in Walla Walla, and Beth Sellars from Suyama Space in Seattle, have agreed to be jurors for this exhibition. Staff is working to get a third juror confirmed to date.

Artists have submitted over 160 artworks online at callforentry.org. Artwork submitted so far is a range of indoor and outdoor sculpture plus many proposals for temporary and site-specific artworks. In previous exhibitions, the jury would have between 5-10 site-specific proposals to review. This year, so far, there are over 20 proposals for this type of artwork.

The closing date of the application period was scheduled for October 30 and has been extended to November 8th.

Update, December 1, 2015: The application period has closed for artists interested in applying for Bellwether. Roughly 400 artworks were submitted to online application. In year's past, staff received around 300 artworks for review. The jury panel will meet in early December to review the artwork and make their selections. Following the panel selections, we will have a technical review of the selected

artworks to address safety and technical concerns, if any, within the selected artworks. Following this review, artists will be notified of selection.

Lamp Post Project 2015

September 1, 2015: For the past several years the Arts Program has partnered with the Bellevue Arts Museum to commission an artist to design art that attaches to lamp posts along the Pedestrian Corridor. BAM partners with the Bellevue Collection to commission a large display in front of Macy's for the Bellevue ArtsFair. This year, Elizabeth Gahan was selected from a pool of applicants to create both the work that was at Macy's during the fair and the colorful work now on the lamp posts and which will be displayed through October.

October 6, 2015: The bright and colorful Lamp Post Project, an art installation by Elizabeth Gahan, is expected to be taken down in the middle of October.

November 3, 2015: The artwork remains up along the Pedestrian Corridor.

Update, December 1, 2015: The artwork has been taken down and this project is closed.

ArtMap – Downtown Bellevue

An update and reprint of the map was completed in September. Three thousand copies were printed. Boxes of maps were delivered to the Bellevue Regional Library and Meydenbauer Center Visitor Information, the Bravern (by request) and Service First, the City's key distribution point. More will be distributed to other locations as well.

Public Art in Neighborhoods

Newport Hills/Lake Heights

January 29, 2015: Permits have been issued for the installation of the Rain Chain. Bruce Myers is continuing to work on the fabrication of the piece.

February 10, 2015: Bruce Myers continues to work on the fabrication of Rain Chain.

May 5, 2015: Landscaping for this project has been underway. The west bus shelter has been fully planted. A significant planted area on the east side of 119th is in progress and should be completed by the May 5th Arts Commission meeting. Artist Bruce Myers is nearing completion of the Rain Chain, with installation expected late May or early June. Following installation of Rain Chain, Bruce Myers will complete the mosaics. Once this final component of the art project is complete, staff will schedule a celebration to dedicate the artwork with the Newport Hills community.

June 2, 2015: Landscaping for the project is complete. Artist Bruce Myers is working out the final finishing details, including preparation for color application to the bottoms of the stainless steel leaves for Rain Catcher. Mr. Myers is planning construction of the foundation for the artwork for the first half of June. The mosaic components to be set onto several granite boulders, will be installed following the installation of the 16' tall sculpture.

August 4, 2015: On Friday, July 24th, artist Bruce Myers installed the 16' tall stainless steel Rain Catcher on the corner of 119th Ave SE and SE 58th Street. The mosaics, the final art element in this project, will be completed by the end of August.

September 1, 2015: Artist Bruce Myers has been working towards completing the layout of the final mosaics in his studio. Newport Hills resident and artist, Bruce Hansen, will be joining him at his studio on Orcas Island to complete the mosaics. The mosaics are being fixed to mesh, brought to Newport Hills and installed on the faces of several of the cut boulders. There will be six mosaics that represent spirals, a key concept in the artwork, and frogs and butterflies. Staff is looking at dates for the dedication, which is expected to occur at the end of September or early October.

October 6, 2015: Staff is finalizing details for the October 17th Opening Celebration for this Newport Hills public art project. The event will be held from 11-1 PM on 119th Ave SE and SE 58th Street. If weather doesn't cooperate, the event will take place at the Newport Hills Community Church, which has been an important community partner in this project. Prior to the event, artist Bruce Myers will be installing the final mosaics. Also prior to the event, Parks staff will be replacing plants that didn't survive through the hot summer and adding additional landscaping where needed.

November 3, 2015: On October 17th the Opening Celebration took place in Newport Hills. It was attended by 30-40 happy residents and guests including Councilmember John Stokes, Commissioners Malkin and Lau Hui, and the artist. Commissioner Malkin served as a master of ceremonies for the event, which featured a number of speeches from local residents, Councilmember Stokes, and the artist, and a special dedication gesture that involved a ribbon cutting and an "inaugural drenching" of the large Rain Catcher on the corner of SE 58th Street and 119th Avenue SE.

Following the ceremony, attendees moved across the street for cake, refreshments and additional snacks donated by Cloud 9 Burgers of the Newport Hills Shopping Center. Feedback from the community on the artwork, the associated landscaping, and the event were very positive.

Lattawood Park

May 5, 2015: At April's Arts Commission meeting, the Commission voted to move forward with exploring the possibility of a public art project with in Lattawood Park. Arts staff has set up meetings with Park's staff and Utilities' staff to further explore the viability of this project. Staff will be contacting the adjacent neighborhoods to get a sense of the interest level within the community for a public art project within Lattawood Park.

June 2, 2015: Arts staff has been meeting with all departments and workgroups within the City that maintain or have infrastructure within Lattawood Park to confirm the viability of the project, potential sites for artwork within the park and to learn the history of the site. Staff has met with Parks maintenance staff and staff from the Natural Resources group and confirmed areas within the park that could potentially have art. Staff has also met with those familiar with the history of the park and will provide a brief synopsis of that at today's meeting. Next steps for this project include writing the guiding principles for the project and meeting with the surrounding communities to kick off the project, among other duties.

August 4, 2015: Arts staff has reached out to the neighborhoods in the area of Lattawood Park. These neighborhoods include Cougar Hills, Horizon Crest, Horizon Heights, and Whispering Heights/Cottingwood. So far, staff has heard back from the Whispering Heights/Cottingwood Community Association and Horizon Heights neighborhood and has scheduled to meet with the Whispering Heights/Cottingwood group at their September 17th meeting at 6:30 pm at the Newport Way Library.

September 1, 2015: Staff has made contact with the Horizon Heights neighborhood association and will be scheduling a meeting with the community once the other neighborhoods have been contacted.

October 6, 2015: Staff will be presenting the project and engaging interested people at the Whispering Heights/Cottingwood annual meeting on November 12th at 7:00 PM. At this point, efforts to contact two of the neighborhood associations close to the park haven't been successful. If this continues, staff will go ahead with the project and promote community engagement and participation directly to residents with future inter-neighborhood project meetings.

November 3, 2015: Staff will be discussing the project at the Whispering Heights/Cottingwood annual meeting on November 12th at 7:00 PM. Staff will also work to schedule a larger event that will be open to all residents in the area to kick off the process. Staff anticipates this event to take place in January.

Update, December 1, 2015: Staff met with the Whispering Heights/Cottingwood community to discuss the project. Feedback from the community was positive. Staff has received a list of residents that are interested in working on the project. Staff will begin planning a larger event with all four community associations within walking distance from the park. The event is tentatively scheduled for January.

Lake Hills/PSE Poles

May 5, 2015: Staff has received engineering drawings of the poles from PSE. Staff needs to confirm that the poles can handle additional weight. Staff has also gotten confirmation from the Lake Hills Library that future community meetings can occur at the Library. Next steps include confirming with Transportation that this project is a possibility. Once this is confirmed staff will reach out to the Lake Hills community regarding their interest and involvement in the project.

June 2, 2015: Staff has discussed this project with Transportation staff, Development Services staff responsible for the City's right of way, and Utilities staff to determine potential issues or concerns with artwork located on the PSE poles. Arts staff is planning to meet with Transportation on site to confirm that constraints are fully understood prior to kicking off the project with the community. Basic concerns discussed focused on maintaining the function of the sidewalk and not impeding traffic flow.

August 4, 2015: Arts staff has reached out to the Lake Hills community and has not heard back to date. Attempts to reach the community association will continue.

September 1, 2015: Staff will be attending the next Lake Hills Community Association board meeting on September 3rd at a private home to introduce the project and recruit interested community members to be involved in the project.

October 6, 2015: Staff will be presenting the project to the East Bellevue Community Council on November 3rd. Staff is also working on a formal agreement with PSE.

November 3, 2015: The East Bellevue Community Council's meeting agenda has changed for November and will not include the Lake Hills/PSE Public Art project. Staff is working to get back on the EBCC calendar in the coming months.

As a precaution, staff is also working with the City's legal team to draft up an official agreement between the City, PSE and the utility companies that use the poles to ensure the long term success of the project.

Update, December 1, 2015: PSE staff is reviewing a draft agreement drawn up by City staff. Once agreement with all parties is achieved, staff will move forward with a community meeting to discuss initial themes for the artwork, and ultimately a request for qualifications from artists.

East Link Public Art

July 2, 2013: The lead artist team is compiling art opportunities along the East Link route. Arts Program staff met with the lead artist team and others to convey the Commission's suggestions made at the June 7th Bellevue Arts Commission meeting. In July, the lead artist will also be assembling selection panels to choose artists for individual stations.

August 8, 2013: At its July 2nd meeting Commissioners continued their discussion of art opportunities at the various stations. The Station naming process was discussed, and the Commissioner discussed how to most effectively communicate with Sound Transit regarding name preferences.

October 1, 2013: Commissioners met with Meta Artè, the lead artist team, and Sound Transit staff at the September Arts Commission meeting to discuss art opportunities at the East Main and the South Bellevue Stations.

November 5, 2013: Candidates for the artist selection panel for the 130th Avenue Station have been submitted to Sound Transit. Sound Transit staff has begun contacting candidates. City of Bellevue staff has also been working on the redesign of the City Hall plaza as part of the Downtown Station design. The plaza will be demolished as construction begins of the alignment Downtown and Sound Transit and City staff is working to come up with a design that allows the functions of both City Hall and the Downtown Station to operate cohesively. Artist Dan Corson, who worked with the City as part of the original City Hall design and created the artwork Root located on the plaza, has been a part of the discussion.

December 3, 2013: SStart staff has begun to contact citizens to serve on art panels. A presentation on how the SStart program works and how art enhances transit will be given to City Council is scheduled for Monday evening, December 9th.

***See following updates for individual stations. ***

130th St. Station

January 21, 2014: The first panel meeting to select an artist for the 130th station was held on January 15th. Artists will be interviewed on January 31st. Chair Tremblay participated on the panel and will report at today's meeting.

February 11, 2014: The 130th station panel interviewed the three finalists previously selected during the first panel meeting. An artist was selected by the panel. SStart staff are working to finalize the contract with the selected artist. SStart is working with City staff to identify panel members for selecting an artist for the Downtown station.

April 1, 2014: the 130th St. Station artist is Patrick Marold.

Downtown Station

May 6, 2014: The first and second panel meetings took place at the Bellevue Arts Museum to select artists for the opportunities for art that have been identified by the Sound Transit staff and the Lead Artist Team. Commissioners Malkin and Jackson took part in the panel. The artists selected are Ball-Nogues Studio and Paul Maroni.

September 1, 2015: SStart staff and artists Paul Marioni and Benjamin Ball of Ball-Nogues Studio (via SKYPE) presented their designs for Commission comment. SStart staff will continue working with the artists and will return with updated designs when ready. The Downtown Station's name is now officially the Downtown Station.

South Bellevue Station

May 6, 2014: The panel met to create a list of artists to interview for the opportunities at the South Bellevue Station. The panel met in the historic Winter's House to review the artists and selected six artists to interview for the opportunities that were identified at the station. Commissioner Ludeña participated in the panel. Interviews are scheduled for May 8th.

November 4, 2014: Design work continues on the art components. At today's commission meeting, SStart Manager Barbara Luecke and John Walser, Project Architect, will update the commission on recent design progress.

Wilburton Station

May 5, 2015: SStart Manager Barbara Luecke and John Walser, the Project Architect, will reorient the Commission with the Hospital Station at today's meeting in preparation for the upcoming artist selection process for this particular station.

June 2, 2015: Sound Transit convened the artist selection panel on May 27th to interview three artists selected as finalists for the Hospital Station. One artist was selected by the panel following the interviews and discussion. Additional updates will be provided by SStart Manager Barbara Luecke and John Walser, the Project Architect, at today's meeting.

September 1, 2015: SStart staff will be touring the selected artist, Philip Smith, around Bellevue and the region to gain context and inspiration for his future artwork. Arts and Planning staff will be meeting with SStart staff and the artist to discuss the future of the Wilburton neighborhood.

October 6, 2015: Staff from the Arts Program, Planning and Parks met with artist Philip Smith to discuss the history and the future of Wilburton, the area around the future station.

November 3, 2015: SStart staff are planning on bringing artist Phillip Smith to the December 1st Arts Commission meeting to discuss the project.

Update, December 1, 2015: Artist Phillip K. Smith III will be joining the Arts Commission at today's meeting to review concept proposals for his artwork at the Wilburton Station.

Public Art Maintenance

Relocation of *Wild in the City*

January 20, 2015: East Link construction along 112th Ave. SE is requiring the City to relocate a pump station to where we have an art work we own jointly with that property owner. Staff in working with the City, the property owner and the artist to relocate the work to about the equivalent of two blocks north. The artist, Norm Taylor, has approved the site. Management of the site has changed hands and staff is in the process of contacting them. The new site is in City right of way. The move will be paid for by the Utilities project. Arts Program staff is getting estimates from qualified contractors to move the art. It is expected to be moved mid-February to early March.

April 7, 2015: The artwork was successfully removed from the site and placed into temporary storage. Two sites on the property are under consideration, one in front of the new Bellevue Courthouse, now undergoing extensive tenant improvements, and a site about 1.5 blocks north of SE15th site. Staff is working with various project managers to resolve the site selection.

May 5, 2015: Landscaping plans have been submitted to a soils engineer. The soil engineer will review the landscape plans and propose a design for installation. This work will lead to an estimate of cost. The artwork is currently being stored at Lile Storage.

September 1, 2015: A soils engineer has been hired to test the soils at one of two sites and create a schematic design for installing the art at the Court House site.

Repairs for Arc with Four Forms

January 20, 2015: This sculpture was damaged during a December windstorm. Art Site is repairing the damaged portion of the work and will clean the sculpture and base. Work is underway.

February 10, 2015: Repair of artwork is underway.

April 7, 2015: Repairs are completed.

City-wide version for ArtMap

February 11, 2014: Staff is confirming the locations of two artworks that have recently been relocated during the construction at the Bellevue Botanical Garden. Once the new locations are identified, the map will be printed and distributed.

January 20, 2015: Staff is reviewing final edits of the City-wide ArtMap. Printing should be underway in the next few weeks.

Other Projects and Programs

Cultural Demographic Survey

January 21, 2014: Staff is reviewing a full draft of the final report.

September 9, 2014: Consultant is completing extensive revisions. Staff expects to see the new draft in September and will work with Consultant to complete the study.

October 7, 2014: Staff is awaiting revisions from the consultant.

November 4, 2014: Revised draft was received and is under staff review.

Cultural Compass

January 21, 2014: At today's meeting the committee will report on progress organizing focus groups.

February 11, 2014: Staff will be organizing and scheduling focus groups to take place in the near future.

April 1, 2014: Three focus groups are scheduled for April and one for May. Details will be presented at today's meeting.

May 6, 2014: Three focus groups have been held to date. Specific discussion topics included Public Art, Facilities and Supporting Artists and Arts Groups. A fourth focus group is scheduled for Saturday May 10th. This group will focus on Cultural Diversity and include shorter discussions on issues related to the other goals that are a part of this update. Attendance of the first three focus groups was light but the discussion was constructive and will provide value direction moving forward. Staff is compiling notes from the focus groups and considering next steps in the process.

Storefronts Bellevue

August 5, 2014: Meydenbauer Center is the newest partner for our Storefronts Program. A new display opened concurrently with Bellwether, and information is included in the Bellwether catalog. Susan Brown's Percy Forde Silbert's Complete Guide to the Ocean and Celeste Cooning's Lotus Flower and Milk and Honey are on display, occupying 6 display windows facing NE 6th.

September 9, 2014: New work will be installed in the Meydenbauer windows this month. The current contract will expire in October, and staff is discussing with Shunpike the possibility of contracting for another year.

October 7, 2014: New work has been installed in the Meydenbauer windows. The two artists being

showcased in the windows are KC Madsen and Paul E. McKee. KC Madsen is showing her artwork Tide and Elements, made of industrial paper, paint, and encaustic, and Paul E. McKee is showing his work flâneur, which is a representation of the reflections seen on the buildings in Downtown Bellevue.

January 20, 2015: The Arts Program will partner with Meydenbauer Center to continue the program in its display windows along NE 6th.

April 7, 2015: Meydenbauer Center is now featuring two new artworks in its windows by artists Philip LaDeau and Serrah Russell. On display February 19th-June 19th, Philip's piece, entitled In Window//In Vitrine explores architectural space and light, and Serrah's piece, entitled ESCAPE, explore the human experience and our surroundings.

September 1, 2015: Currently there are no displays at Meydenbauer while it undergoes its \$12 million renovation. It is assumed displays will continue when the Center re-opens in a few weeks.

November 3, 2015: Artist Barbara De Pirro has installed artwork in the Meydenbauer display windows. The artist has also had work in the last two Bellwether sculpture exhibitions including work at Bellevue City Hall, along the Pedestrian Corridor, and on Bellevue Way. The partnership with Meydenbauer Center will continue into 2016.

Funding, 2015

January 20, 2015: Applications for 2015 were due January 12th. Eleven EAP applications were received along with 21 Special Projects applications. The number of EAP applications is consistent with last year. The number of Special Projects applications is down 4 from last year, but is still at a high number. Panel interviews and deliberations are in the process of being scheduled for the week of January 26th.

February 10, 2015: At today's meeting, the Allocations Committee will present its funding recommendations for Eastside Arts Partnerships and Special Projects recipients. The Arts Commission will vote on the Committee's recommendations.

April 7, 2015: All organizations have been notified of their funding awards. From now to December staff is processing invoices and reports.

Funding, 2016

August 4, 2015: At today's meeting, the Arts Commission will discuss the 2016 Funding Guidelines and vote whether to recommend that Council adopts the 2016 Funding Guidelines.

September 1, 2015: 2016 Funding Guidelines, recommended by the Arts Commission, are scheduled to go to Council for final approval on September 8th.

October 6, 2015: On September 9 Council approved 2016 funding guidelines as recommended by the Commission, and the local arts community was notified that the guides are available. On September 29th, staff held a clinic to answer questions from prospective applicants. Applications for Eastside Arts Partnerships and Special Projects funding are due October 12th. Staff is in the process of scheduling dates for the panel to meet.

November 3, 2015: The Allocations Committee met several times during the week of October 26th to interview EAP applicants and to review Special Projects applications. Due to the timing needed to produce the November Arts Commission Packet, a more detailed description will be available at today's meeting.

Update, December 1, 2015: City Council met reviewed the Arts Commission's funding recommendations on November 23rd. The funding recommendations were approved.

Completed in 2015

Arts and Heritage Day in Olympia, 2015

Completed.

January 20, 2015: Arts Program staff has traditionally assisted with setting up appointments with Bellevue's state legislators on Arts and Heritage Day, which this year will be on March 4th, 2015. Commissioners are invited to participate.

April 7, 2015: Completed March 4th.

Comprehensive Plan Update

Completed.

August 4, 2015: On August 3rd, Council will meet to vote on the approval of the final draft of the Comprehensive Plan.

September 1, 2015: On August 3rd, the City Council voted to approve the final draft of the Comprehensive Plan.

Ethnic Showcase

Completed.

For the past several months City staff members Shelley Brittingham and Mary Pat Byrne collaborated with a multi-agency team called Arts and Social Change to organize a series of opportunity for emerging ethnic artists to develop professionally. In the fall two free daylong workshops were held in Seattle at which artists learned about contracts, booking, and other "tools of the trade." Experts were on hand to provide one-on-one evaluations of websites and social media activity and a professional photographer was available to take professional photos of individual performers and groups. On January 27th a half-day showcase at Meydenbauer Center featured about ten juried performers, many of whom attended the workshops last fall. Also invited were members of local arts agencies and others who book artists such as a representative of the Bellevue Downtown Association. Over 200 people registered for the event. Councilmembers Stokes and Lee both attended and gave some words of welcome. The organizers felt the event was very successful at the Meydenbauer and plan to make Meydenbauer Center the site for the event in the future.

Asian Pacific American Heritage Month

Completed.

May 5, 2015: At the City Manager's request, arts staff worked with various galleries, artists and leaders in the Asian Community to create a month-long display to celebrate Asian Pacific Heritage Month through the lens of visual arts and design. About 20 artworks will be on display from May 4th through May 31st. A closing celebration is planned for May 28th at City Hall.

June 2, 2015: To celebrate both the exhibition and Asian-Pacific American Heritage Month, community members, artists and others met on May 28th at Bellevue City Hall. Music was provided by Rong Rong Chinese Folk Choir and harpist Charlene Chin. More updates about the event will be provided at today's meeting. This project is completed.

Pianos in the Parks

Completed.

Pianos in the Parks brought 3 pianos to Bellevue in a first time partnership effort. The artist-painted pianos were sited at the Ashwood Plaza, Bellevue Botanical Gardens and Downtown Park for one month, July 17 to August 17. The Downtown Park piano was painted by Arts Commissioner Vikram Madan. The event is the creation of Laird Norton Wealth Management. Classical Pianos, a Bellevue business, found, tuned and oversaw delivery, maintenance/repair and retrieval of the 22 pianos sited county-wide. The City participated through the arts program for no cost. Some staff time was used in coordinating and promoting our local pianos. A small opening event was held at the Bellevue Regional Library, at which the Mayor both spoke and played the Ashwood Piano. The pianos were all purchased afterwards through an auction. It is likely the event will be repeated in 2016.

Department of Planning and
Community Development

Information

Arts Commission Upcoming Agenda Items & Events

[illegible]

COMMITTEE DESCRIPTIONS AND SUGGESTED ASSIGNMENTS

Below are suggested committee assignments for 2015. If you have any questions or would like to swap an assignment, please discuss with Chair Paul Manfredi.

2014-2015 Suggested Assignments	
Projects	Commissioners
Allocations	Becky Lewis, chair
Allocations	Paul Manfredi
Allocations	Vikram Madan
Annual Meeting	Paul Manfredi, lead
Bel Red Arts District	Carl Wolfteich
Bel Red Arts District	Paul Manfredi, chair
Bellwether Sculpture Exhibit 2016	Philip Malkin, chair
Bellwether Sculpture Exhibit 2016	Becky Lewis
Bellwether Sculpture Exhibit 2016	Carl Wolfteich
Bellwether Sculpture Exhibit 2016	Maria Lau Hui
Blackstock Gift Review	Maria Lau Hui
Blackstock Gift Review	Vikram Madan
Blackstock Gift Review	Philip Malkin
Cultural Compass Update	All commissioners
Cultural Compass Update	Trudi Jackson, lead
East Link Public Art 120 th Spring District Station	Vikram Madan, lead
East Link Public Art Bel Red Station	Becky Lewis, lead
East Link Public Art Downtown	Philip Malkin, co-lead
East Link Public Art Downtown	Trudi Jackson, co-lead
East Link Public Art Hospital Station	Paul Manfredi, lead
East Link Public Art South Bellevue	Maria Lau Hui, lead
EastLink Public Art Main Street	Carl Wolfteich, lead
Executive Committee	Paul Manfredi, chair
Executive Committee	Philip Malkin
Meydenbauer Bay Beach Park Phase 1	Vikram Madan, lead
Neighborhood Public Art Project Leads Lattawood Park	Philip Malkin, lead
Neighborhood Public Art Project Lake Hills Cell Towers	Becky Lewis, lead

Tateuchi Center Collaboration	All commissioners.
Tateuchi Center Collaboration	Trudi Jackson, lead

BELLEVUE ARTS COMMISSION
REGULAR MEETING
MINUTES – **AS CORRECTED**

October 6, 2015
4:30 p.m.

Bellevue City Hall
Room 1E -120

COMMISSIONERS PRESENT: Commissioners Jackson, Lau Hui, Lewis, Madan, Malkin, Wolfteich

COMMISSIONERS ABSENT: Chairperson Manfredi

STAFF PRESENT: Mary Pat Byrne, Scott MacDonald, Department of Planning and Community Development

OTHERS PRESENT: Jessica Lambert, Venues for Art in the Local Area (VALA); Karen Abel, ArtsEast; Joan Wittler, Evergreen Association of Fine Arts (EAFA)

RECORDING SECRETARY: Gerry Lindsay

I. CALL TO ORDER

The meeting was called to order at 4:31 p.m. by Commissioner Malkin who presided. All Commissioners were present with the exception of Commissioners Jackson and Lewis, who arrived at 4:33 p.m., and Chair Manfredi, who was excused.

2. APPROVAL OF AGENDA AND MINUTES

A. Approval of Agenda

Motion to approve the agenda was made by Commissioner Wolfteich. Second was by Commissioner Lau Hui and the motion carried unanimously.

B. Approval of Minutes

Motion to approve the September 1, 2015, minutes as submitted was made by Commissioner Wolfteich. Second was by Commissioner Lau Hui and the motion carried unanimously.

3. ORAL COMMUNICATIONS – None

4. ACTION ITEMS AND DISCUSSION ITEMS

A. VALA/ArtsEast/EAFA Panel Discussion

Arts Program Manager Mary Pat Byrne introduced the panelists and said her reason for calling them together was to give the Commission a better understanding of what their organizations do, what challenges they face, and what opportunities they see.

Joan Wittler, Evergreen Association of Fine Arts (EAFA) president, said the all-volunteer non-profit organization began in 1975 with six members. It now has more than 200 members and it continues to grow. About 65 percent of the members reside in Bellevue; the balance live in

the broader Puget Sound area. She gave a description of their membership, programs, and current initiatives including a grant program and their public art program.

The organization conducts monthly meetings throughout the school year and takes the summer months off. The meetings are held at the Bellevue Presbyterian Church. Steps are being taken to hold an evening meeting as well to accommodate artist schedules. The meetings include a lecture and demonstration by an advanced artist from the community. EAFA also offers an online newsletter, and has three juried shows annually.

Karen ~~Able~~ Abel, executive director of ArtsEast, said the organization has been in existence for ten years. The first five years was spent in gathering artists and dreaming about what could be done. The organization continues to evolve, building its programs and awareness. There are about 250 members that include both artists and arts supporters. Well over ten thousand people are served annually through the organization's various programs. The organization is based in downtown Issaquah but it serves the entire Eastside.

The most visible thing done by ArtsEast is a retail gallery. About half of the 3500 square-foot building on First Street in downtown Issaquah is dedicated to a retail gallery in which member's works are shown and sold. The gallery is completely artist envisioned, managed, driven, marketed and staffed. Steps are being taken to market in new and more aggressive ways.

ArtsEast has a wide range of programs offered to artists and the Eastside community including 10-12 shows annually, many of which include town hall-type programs to add depth and draw people, community events, and up to 150 educational workshops serving about 1200 students a year which are attended mostly by adults, although some youth workshops are offered.

Jessica Lambert, executive director of Venues for Art in the Local Area (VALA) said the organization began in 2010. She said she and her husband co-founded the organization because of the apparent disconnect between the community and the arts programming in Redmond. At the time the Redmond Arts Commission was going through a large transition period, there was no Kirkland Art Center, but there were a lot of artists. What was missing was a non-profit arts organization to mobilize the artists and connect with the city. Things mobilized once the Redmond Arts Commission found its footing.

Ms. Lambert said VALA is based in Redmond and considers itself to be an Eastside organization meeting the needs of Eastside artists. There is a clear lack of venues, studio space and installation space, and the mission of the organization is to connect artists with artists, artists with the community, and the community with the arts. The organization's programming is currently focused on public/private partnerships.

VALA works to create opportunities for artists and the arts. The educational programs provided are primarily focused on adults, though steps are being taken to include the younger generation. A pilot program was launched early in 2015 in which seven artists were invited to come in and set up shop and the response was good. The notion is being expanded to provide space to artists at low cost. VALA partners with the Redmond Town Center on the annual Redmond Arts Festival.

Ms. Lambert explained VALA's funding structure and sources as a non-member organization that includes both public and private support.

Asked by Ms. Byrne to explain how the individual organizations differ, Ms. ~~Able~~ Abel said the permanent bricks and mortar retail gallery and a space in which to offer classes is an obvious

difference. The income earned is mostly returned to the working artists. The rent on the space is very high even though it is below market rate. There is a tremendous amount of overlap among the artists with the three different organizations, which is possible by not being tied to political boundaries.

Ms. Byrne asked what the biggest challenges being faced, Ms. Wittler said EAFA is facing the challenge of finding a new home. The hope is that a place will be found on the Eastside to facilitate the members who do not want to travel far. The Design Center location where the organization was housed originally was a great space, but it was not possible to achieve the goal in terms of foot traffic.

Ms. Lambert commented that critical mass is a primary concern. There is no question the organization has the talent, the artists and the content, but unless a critical mass is achieved in terms of traffic it will be difficult to succeed. It is also essential to consider the demographics of the artists in the organization. What VALA has seen is a rise in the number of emerging artists who are older, and the economic drivers are different for them.

Ms. ~~Able~~ Abel stated that what most artists need is a dedicated, significant space in which they can be messy in creating art. Many artists are lost to Seattle and other places as they become more advanced and need space in which to work collaboratively and connect with other artists. Society generally understands the needs of performing artists when it comes to practice and performance space, but society is less well informed about the needs visual artists have for space.

Asked by Ms. Byrne to comment on opportunities, Ms. Lambert said VALA believes the answer to success lies in partnerships.

Ms. Wittler said there is opportunity in open dialog between arts groups and organizations. Arté in Kirkland, a development that when opened will have residents on the top floors and retail on the ground floor, will include a small gallery. What artists are seeking in Seattle should be recreated on the Eastside, and the primary need is space.

Asked what, aside from money is needed to make the organizations more successful in meeting their respective missions. Ms. ~~Able~~ Abel said ArtsEast needs passionate people who are leaders. As yet there are no clear answers relative to where the organization is going and how it will be able to sustain itself 20 years into the future. In a strange way, gridlock, traffic and lane tolls can be seen as the impetus for arts organizations to collaborate in real ways without impacting each other's customer base, most of whom prefer to stay close to home.

Ms. Lambert concurred with the need to improve collaboration and communication. It would be helpful to have an Eastside arts website that is not linked to any specific city. There is a real need to let artists and the public know about where things are.

Ms. Byrne asked if there is any particular technical assistance arts groups could benefit from receiving. Ms. ~~Able~~ Abel said the boards could certainly benefit from leadership training as well as training on how to move forward into e-commerce. Ms. Wittler said communication is a huge issue relative to how to get the word out about what is being done. Ms. Lambert said the groups could benefit from learning how to develop an audience and what it is that will bring people in the door.

Commissioner Wolfteich asked how much exposure the organizations have on social media networks as a tool to enhance connectiveness. Ms. Lambert said VALA is pretty savvy about using social media. Even so, people do not know the organization and what it does.

Ms. ~~Able~~ Abel said ArtsEast ranks about average when it comes to using social media. Ms. Wittler suggested that EAFA is a bit below average in that arena, primarily because the members are older.

Commissioner Madan said as a working artist he is always surprised to learn of an organization that has been in place for a long time. That is evidence of a communication problem. The Eastside has a problem in connecting with the general audience and one thing that could help would be to get included in the art section of the *Bellevue Reporter*, the *Issaquah Reporter* and the *Redmond Reporter*, each of which is part of the same parent company. The publications are widely distributed on the Eastside.

Ms. ~~Able~~ Abel commented that ArtsEast enjoys good press coverage in the *Issaquah Reporter*, but only occasionally does a story appear in all three papers. When they do, the results are noticeable.

Commissioner Madan suggested it would be beneficial to have an Eastside distribution list for arts organizations to use in getting the word out about upcoming events. Ms. Lambert said 4Culture does that to some degree. It would be great to have an app people could click on and know instantly what is going on. Ms. Byrne said that can be done with Facebook. There is also an app called NextDoor that focuses on issues and events associated with limited areas. Additionally, the StQRy app allows organizations that pay for subscriptions to easily post events.

Commissioner Malkin said his experience has been that the news media will pick up newsworthy events once they receive a press release. Newsworthy events include curated or juried shows where the curator or jurors are well known. He added that ArtsFund has a very active online presence and that organization provides training for the ArtsFund associates.

Mr. MacDonald said Seattle pulls a lot of funding dollars from the Eastside, and also pulls a lot of artists who may live on the Eastside but who want to work in Seattle or otherwise engage with the Seattle art scene. That speaks to the issue of critical mass. The issue of creating a critical mass on the Eastside begs the question of addressing demographics, cultural as well as age. Overall, Bellevue's residents are getting older, while residents in Downtown are getting younger. Redmond is getting younger across the board. Statistically, younger persons are more likely to attend arts events. He asked what the organizations are doing to look to the future and address the changing demographics on the Eastside.

Ms. ~~Able~~ Abel said her organization has spent a lot of time focused on that issue. The conclusion reached was that the demographic shift offers a number of opportunities. Art is an antidote to cocooning behind a computer, and the younger generation of art users and supports, as well as artists, demand engagement in ways that have not been seen in a long time. The performing arts and museum entities have understood that for a long time and have developed audience engagement strategies. The same approach needs to be taken by the visual arts community.

Ms. ~~Able~~ Abel commented that the Arts Commission is well connected in a much bigger city than the three organizations. She said what ArtsEast needs is leaders, people with vision, and young people who want to roll up their sleeves and get involved in driving the arts forward. Ms. Wittler agreed, as did Ms. Lambert who added that Bellevue has the critical mass opportunity that the other cities do not have.

5. COMMISSION QUICK BUSINESS – None

6. REPORTS

- A. Commissioners' Committee and Lead Reports
- B. Project Updates from Staff

Ms. Byrne announced that since the packet was put together an offer to donate art was received. It was created by Verena Schwippert, and currently owned by Betsy Blackstock, who will be moving soon and can't take the artwork along. The city owns two works by Ms. Schwippert, *Giga Now* and *Water, Precious Water*, that were acquired through past sculpture exhibitions; both are sited in Downtown Park. As a resident of Surrey Downs, Ms. Blackstock would like the work to be sited in Surrey Downs Park. The park is set for a major redesign and staff are amenable to siting the work temporarily in the park and then relocating it in a permanent location consistent with the redesign of the park. Moving and installing the work, plus future maintenance would be the responsibility of the Public Art Program.

Ms. Byrne said it will be up to the Commission to determine whether or not all criteria for accepting art can be met, and to vote on whether or not the piece should be accepted into the City's collection. She proposed forming a committee and recommended Commissioners Lau Hui, Madan and Malkin because of their backgrounds in visual art.

Ms. Byrne shared with the Commission new information regarding resiting *Wild in the City*, a work that was at the Bellefield Office Park that had to be removed to accommodate a utilities project ahead of the Sound Transit East Link project. Two sites have been identified: near the courthouse in the Bellefield Office Park, and along 112th Avenue SE. The 112th Avenue SE site has good visibility but is close to Mercer Slough and as such will require several months to obtain the necessary permits. Additionally, the underlying peat soils will require siting the work on either piles or geofoam. The courthouse site is known to be unevenly settling that may or may not continue. It is likely that anything sited there will need to be constantly readjusted over time. For the long run, the courthouse site does not appear to be the best choice. Accordingly, focus will be given to the 112th Avenue SE site.

Ms. Byrne announced that she would be leaving the city effective November 30. She said she has been with the city for 28 years and plans to retire. She said an open call will be made to fill her vacancy.

Mr. MacDonald reported that the opening celebration for the Newport Hills art installation has been scheduled for October 17 from 11:00 a.m. to 1:00 p.m. The contract for the artist has been extended to October 9 by which time the work is expected to be completed.

7. CORRESPONDENCE, INFORMATION – As Noted

- A. Written Correspondence
- B. Information
 - 1. Future Agenda Items
 - 2. Committees

8. ADJOURNMENT

Commissioner Malkin adjourned the meeting at 6:24 p.m.