

City of Bellevue
ARTS
program

Bellevue Arts Commission



Make sure to download StQRy, a free mobile app, to learn more about the City's Public Art Collection. More artworks and information added to the app every week!

Department of Planning and
Community Development

April 7, 2015
Regular Meeting



Cover photos: Staff has begun uploading information to StQRy, a mobile application that is free to the public. StQRy allows the City to post information about its public art collection, including the name of the artist, the medium and location of the work, concepts that drove the work, links to the artist's website, and much more.

Clockwise from top left is *Homage* by Bruce Myers, *Season's Shelters* by Karen Guzak, *Rain Catchers* by Bruce Myers, *Legend of the Deep* by Dudley Carter, *3D Drawings* by Bill Viehler, *Nature of Sitting* by Pam Peyette and *Newport Way Retaining Wall* by Vicki Scuri.

Mission: To encourage and support the arts as a vital part of community life.

City of Bellevue, Comprehensive Plan, Urban Design Element

Agenda

Department of Planning and
Community Development

Agenda

Tuesday, April 7, 2015
Meeting: 4:30 p.m.
Bellevue City Hall, 1E-109

Bellevue Arts Commission
Regular Meeting
Commission Staff Contact: 425.452.4105

-
1. **CALL TO ORDER** 4:30
Chair Jackson will call the meeting to order
 2. **APPROVAL OF AGENDA AND MINUTES** 4:30 – 4:35
 - A. Chair Jackson will ask for approval of the agenda.
 - B. Chair Jackson will ask for approval of the February 10, 2015 regular meeting minutes.
 3. **ORAL COMMUNICATIONS** 4:35 – 4:40
Chair Jackson will entertain oral communications limited to three minutes per person or five minutes if representing the official position of a recognized community organization for other than main agenda items and public hearing subject. A maximum of three people are permitted to speak to each side of any one topic.
 4. **ACTION ITEMS AND DISCUSSION ITEMS**
 - A. Unity Performing Arts Center (Attachments) 4:40 – 5:10
 - B. Neighborhood Public Art Projects Selection (Attachments) 5:10 – 5:50
Action: Vote to recommend the next two projects for the Neighborhood Public Art Program
 5. **COMMISSION QUICK BUSINESS** 5:50 – 5:55
 6. **REPORTS** 5:55 – 6:15
 - A. Commissioners' Committee and Lead Reports
 - B. Project Updates from Staff
 1. Monthly Project Update Report
 2. PACE Update
 3. Comprehensive Plan Policies as Adopted by Planning Commission

7. **CORRESPONDENCE, INFORMATION**

6:15 – 6:20

A. Written correspondence

B. Information

1. Ballet Bellevue Recent Activity
2. Cultural Access Washington
2. Future agenda items
3. Committees
4. Public Art Program funds (available at meeting)

8. **ADJOURNMENT**

6:20

Chair Jackson will adjourn the meeting.

Wheelchair accessible. American Sign Language (ASL) interpretation is available upon request, and large print agendas available upon request. Please contact the Arts Program at least two days in advance mpbyrne@bellevuewa.gov ▪ 425-452-4105 (Voice) ▪ Please dial 711 for assistance for the hearing impaired.

Department of Planning and
Community Development

Minutes

BELLEVUE ARTS COMMISSION
REGULAR MEETING
MINUTES

February 10, 2015
4:30 p.m.

Bellevue City Hall
Room 1E -109

COMMISSIONERS PRESENT: Chairperson Jackson, Commissioners Lewis, Ludeña, Madan, Malkin, Manfredi, Wolfteich

COMMISSIONERS ABSENT: None

STAFF PRESENT: Mary Pat Byrne, Scott MacDonald, Department of Planning and Community Development

OTHERS PRESENT: Councilmember Stokes, Ken Schiring

RECORDING SECRETARY: Gerry Lindsay

1. CALL TO ORDER

The meeting was called to order at 4:38 p.m. by Chairperson Jackson who presided. All Commissioners were present with the exception of Commissioner Manfredi, who arrived at 4:41 p.m. and Commissioner Lewis who was excused.

2. APPROVAL OF AGENDA AND MINUTES

A. Approval of Agenda

A motion to approve the agenda was made by Commissioner Madan. The motion was seconded by Commissioner Wolfteich and it carried unanimously.

B. Approval of Minutes

A motion to approve the January 20, 2015, minutes as submitted was made by Commissioner Madan. The motion was seconded by Commissioner Malkin and it carried unanimously.

3. ORAL COMMUNICATIONS – None

4. ACTION ITEMS AND DISCUSSION ITEMS

A. Meydenbauer Bay Beach Expansion Public Art Project

Arts Specialist Mary Pat Byrne reminded the Commissioners that planner Robin Cole had previously presented design plans for the expansion of Meydenbauer Bay Beach Park. At that time, the Commission voted to recommend the Arts Program become involved in the project as a key public art commission. With the design work moving forward, 4Culture was hired to run the artist selection process for the identified opportunities. Cath Bruner, 4Culture's public art program manager, will do the work.

Three art opportunities have been identified with a total budget of \$190,000, not including the fee for services being paid to 4Culture. Ms. Byrne shared with the Commission the draft Request for Qualifications and called particular attention to the eligibility paragraph and asked for input as to whether or not the call should be limited to artists living in the Northwest states of Washington, Oregon, Idaho and Montana.

Chair Jackson suggested artists from British Columbia should be allowed to participate given the strong artistic community there. Commissioner Madan commented that most public art calls are typically restricted to artists from the United States to promote the local art communities. Chair Jackson pointed out that British Columbians are our neighbors and there are some very good public artists living there.

Answering a question asked by Commissioner Madan, Ms. Byrne said the deadline is being driven by the need to get an artist involved in time to interact with the design team in a meaningful way before the plans reach 90 percent.

Chair Jackson asked how the three project budgets were derived. Ms. Byrne said the overall amount is about 1% of the construction budget for this phase. Because of her broad experience with all types of integrated art projects, part of Ms. Bruner's scope of work was to propose how the budget should be divided among the various art opportunities. She added that for some of the opportunities construction credits will be available, and that will extend the impact of the art dollars.

Noting that two of the panelists are to be community neighborhood representatives, Commissioner Malkin asked where they will be from. Ms. Byrne said the thinking is that one should be from close to the area and the other should be from the city at large. An Arts Commissioner will also be appointed to participate.

A motion to recommend the Arts Program proceed to issue the call to artists as presented was made by Commissioner Manfredi. The motion was seconded by Commissioner Malkin.

A motion to amend the motion to include artists from British Columbia was made by Chair Jackson. The motion to amend was seconded by Commissioner Manfredi.

Commissioner Malkin asked why the call should be limited to the Northwest artists. Chair Jackson said it is less expensive to work with Northwest artists given that they are already from the area, and they are more likely to understand the local geography and Northwest culture. Commissioner

Malkin said if budget was not an issue he would strongly advocate for broadening the scope to include at least California.

Commissioner Madan argued in favor of keeping the focus on regional artists who would be far better at understanding the local culture.

The motion to amend the motion carried 4-2, with Commissioners Manfredi and Ludeña voting no.

The motion as amended carried unanimously.

B. 2015 Funding Recommendations

Commissioners Madan and Manfredi indicated they both have children who participate in Bellevue Youth Symphony Orchestra (BYSO), but both stated that they could remain objective.

Because of her position as BYSO executive director, Chair Jackson recused herself from participating in any vote concerning that organization.

Commissioner Malkin commented that having served on the Allocations Committee in 2014 and 2015, he saw a recurring theme regarding a lack of space for rehearsals, performances, studio work and gallery exhibits. Several performing arts groups mentioned the building excitement for the opportunities the Tateuchi Center will bring if it becomes a reality. He said it was exciting to be able to fund every applicant.

Commissioner Manfredi said serving on the allocations committee is a wonderful way of finding out the breadth and depth of what is happening in the community artistically. Space clearly is the principle issue. The committee wished it had more to allocate but certainly felt strongly the need to recognize the good work done by the organizations and the Commission's desire to support them going forward. The organizations are growing and more funding is needed to provide them with the support they need.

Ms. Byrne called attention to a series of charts in the packet and noted changes and trends in the applications over the last few years. She noted that growth in applications from diverse groups over the years peaked in 2014 and leveled off for the recent round. She said the expectation is that the net number of applicants will continue to increase in the coming years.

The Bel-Red Arts District initiative has been under way for several years now. Under the initiative, organizations based in that district are given priority consideration in funding. However, except for Emerald Ballet Theater and Pacific Northwest Ballet, both of which are located in Bel-Red, no new groups have stepped forward. The initiative has not proven to be impactful in terms of encouraging activity in the district. Recently there have been talks with artists and the owners of arts-related businesses in Bel-Red to find out what they are interested in doing. It would be a good idea to invite

people, including Greg Johnson, who is the executive director of Wright Runstad, the developer of Spring District, to visit with the Commission and discuss possible strategies.

Commissioner Madan pointed out that most groups are not looking for particularly large spaces and that various organizations could form a coalition to jointly acquire space.

Commissioner Malkin said another approach would be for the City to become a landlord and rent space to artists and arts groups.

Commissioner Malkin noted that there were no individual applicants for Special Projects. Ms. Byrne added that neither of the individual artists who applied in 2014 were able to complete their projects; one of them may apply again in 2016.

Chair Jackson left the room and handed the gavel to Commissioner Manfredi.

Ms. Byrne reminded the Commissioners that the Eastside Arts Partnership is what is known as an organizational funding program. Under this program, funded organizations can expect about the same level of funding each year, which gives them more stability and better ability to plan. The levels change only if the group has experienced a significance or the funds available change. The organizations do most or all of their programming in Bellevue, and they are each evaluated based on all of the services provided in Bellevue. The groups are encouraged to submit applications based on their need, not the amount of funding available.

Ms. Byrne commented that typically about 80 percent of the available funding is earmarked for Eastside Arts Partnership and 20 percent for Special Projects. The Allocations Committee, however, has the option of moving the funds around a little bit as deemed necessary.

Commissioner Madan noted that the amounts recommended by the Allocations Committee for 2015 mirror the amounts allocated in 2014 with the exception of KidsQuest and Music Works Northwest. Ms. Byrne explained that Music Works Northwest was given a one-time \$5000 allocation in 2014 to assist with moving to a new facility.

Answering a question asked by Councilmember Stokes, Ms. Byrne explained that the total budget was made up of the \$110,000 allocation from the city plus the annual operating grant of \$13,000 from 4Culture. The budget has not changed since 2001. Several requests for an increase in allocations have been made over the years but none have been successful. The most recent request was for allocations was \$200,000. Councilmember Stokes said it does not make sense to be stuck at the 2001 funding level.

Ms. Byrne commented that the discussion around the need for additional funding generally comes up during the budget cycle, noting that it may be helpful to raise the issue with the Council during the off-cycle. Councilmember Stokes agreed and said there is a growing awareness of the arts community, particularly the struggles in the Bel-Red corridor.

A motion to endorse the Allocations Review Panel's recommendations for 2015 Eastside Arts Partnerships funding and present the recommendations to the City Council was made by Commissioner Wolfteich. The motion was seconded by Commissioner Madan and it carried unanimously.

Chair Jackson returned and resumed the chair.

Chair Jackson said she read in the newspaper that Stone Dance Productions faced some difficulties last fall and had to seek a last-minute grant. Ms. Byrne said Eva Stone, the artistic director for the group, lives in Snohomish County making her ineligible for 4Culture funding. Ms. Stone had to find funding to make up for the loss.

Commissioner Malkin said the Eastside Jazz Club lost its facility when the Marriot raised the rent to an unaffordable level. The organization is looking for a new home.

Commissioner Madan asked if the City's community centers could be used by organizations looking for space. Ms. Byrne explained that the main problem is the community centers are heavily programmed and there are few opportunities for arts groups to use the venues.

Commissioner Ludeña asked if there is a limit to the amount of money Special Projects can request. Ms. Byrne said the guidelines state that groups generally receive between \$500 and \$2000, but the Commission has the option to recommend more or less. Groups are encouraged to ask for what they need.

Commissioner Ludeña said the problem for many groups is that they need the funding up front, especially the smaller organizations. The application process is difficult as well. Ms. Byrne said Seattle has created a program to deal with such situations and she offered to research how they do it.

Responding to a question from Commissioner Wolfteich, Ms. Byrne said everyone who applied for 2015 was approved for some level of funding.

Commissioner Madan noted that the Lake Washington Symphony would be putting on a single performance while the Village Theatre would be performing at 15 schools. In terms of the number of people impacted, the latter is considerably more but is marked down for less funding.

Commissioner Manfredi said there was a clear desire on the part of the Allocations Committee to see a professional grade orchestra return to Bellevue and saw the application as an opportunity for a longer-term impact.

Commissioner Madan pointed out that many of the projects requested funding for venue rental. Ms. Byrne commented that paying rent is a fact of life for any arts group and this is a legitimate way for the city to support their work.

A motion to endorse the Allocations Review Panel's recommendations for 2015 Special Projects funding and present these recommendations to the City Council was made by Commissioner Madan. The motion was seconded by Commissioner Malkin and it carried unanimously.

Chair Jackson returned and resumed the chair.

Chair Jackson asked if consideration should be given to using some of the 4Culture funding for Eastside Arts Partnership rather than special projects. Ms. Byrne said in working through its deliberations the Allocations Committee concluded it should maintain Eastside Arts Partnership and use the 4Culture funding to address the requests coming in for Special Projects. Commissioner Malkin pointed out that even with the \$13,000 from 4Culture the available funding was only about half of the requested amount.

A motion to endorse the Allocations Review Panel's recommendation to use all of the \$13,000 of 4Culture Sustained Support funding for Special Projects funding was made by Commissioner Manfredi. The motion was seconded by Commissioner Malkin.

The motion carried unanimously.

C. Cultural Access Fund

Ms. Byrne explained that Cultural Access Washington is a proposal for state legislation that would allow counties to tax themselves and use the funds to provide ongoing support for arts and cultural organizations. She noted that the city is in the process of putting together its legislative agenda which makes it the right time for the Commission to take a look at the Cultural Access Fund issue and make a determination as to whether or not a recommendation to support it should be carried forward to the Council. She stressed that while the Commission is charged with advocating for the arts, the Commission is limited to advocating for issues the Council has approved, particularly legislative issues.

Commissioner Malkin voiced his support for the legislation because it would increase the flow of funding to the arts and cultural in King County. The estimate is that King County would receive as much as \$46 million.

Chair Jackson clarified that if approved by the legislature, King County would still have to have a vote before the tax could be imposed. She added that it could be either a sales tax or a property tax and the legislature has yet to decide which it should be.

Ms. Byrne stated that a reasonable amount of the revenue stream would be used for administration. About ten percent would be used for public school access, with the remaining funding supporting large regional cultural organizations, and to a smaller extent, funds would be distributed through an application process to community based organizations. The large organizations locally that would benefit would be Music Works Northwest, Bellevue Arts

Museum, Village Theatre, and potentially the Tateuchi Center. The smaller groups could benefit by being awarded funds through an application process. Collectively, the positive impact could be substantial.

Councilmember Stokes said the Council has not taken a close look at the legislation yet. He agreed the first step would be for the Commission to recommend it to the Council for inclusion on the city's legislative agenda.

A motion to advise the City Council support the Cultural Access Washington bill was made by Commissioner Malkin. The motion was seconded by Commissioner Manfredi and it carried unanimously.

5. COMMISSION QUICK BUSINESS

Ms. Byrne reminded the Commissioners about the joint boards and commissions meeting on February 25 regarding the Comprehensive Plan update.

6. REPORTS

A. Commissioners' Committee and Lead Reports

i. Presentation to Downtown Residents Association

Commissioner Wolfteich said he made a presentation regarding the Tateuchi Center to Downtown residents at the library. There were 34 residents in attendance. The president of the Downtown Residents Association observed that about two-thirds of the members are enthusiastically for the Center, and the other third are leaning that way but remain somewhat uncertain. The group asked if lower cost programs or scholarships will be available for the educational program to appeal to all income levels. Questions were also asked about parking and potential traffic impacts.

Ms. Byrne said the project itself will be adding no more than 250 parking stalls, which is less than would normally be required. The bulk of the parking stalls will be associated with other buildings and will be used by people going to restaurants and the like, and during the day the spaces will be occupied by people working in the various towers. The leadership of the Downtown Residents Association asked to see the traffic impact study the Tateuchi Center had to do in order to get its building permits. The traffic engineer who reviewed the plans will also visit with the group to talk about how the calculations are made.

B. Project Updates from Staff

i. Monthly Update Report On All Projects

PACE. Ms. Byrne updated the Commission on a report presented to Council on February 9th in which results from a feasibility study were presented. She briefly described PACE's history which began in 2002. In 2013 PACE representatives requested a substantial investment by the City in order to help reach their funding goal and to stimulate more private contributions. Stating in a resolution that the City sees the future Tateuchi Center as an asset to the community, Council directed staff to develop a memorandum of understanding between the City and PACE. Each party agreed to complete certain tasks to accomplish three things: provide the due diligence research Council would need in order to decide whether to invest, increase public awareness of the project and the benefits it would bring to the community, and reinvigorate the PACE board with new membership and a rejuvenated fundraising campaign. PACE also agreed to provide whatever assistance the City would need in its due diligence research.

On February 9 a milestone presentation was made to the Council regarding the findings of the feasibility study. The consultant-led study looked at the operating pro forma in terms of revenues and expenses, the programming, the demand for the space, and the key factors to success. The consultant worked with John Haynes to develop a feasible budget that is close to what was already in hand but which is organized in differently. The projection shows a first-year revenue shortfall of \$750,000 that would have to be dealt with, but in the following years the shortfall would decrease to \$250,000 annually. The study found that the demographics in Bellevue and the Eastside are excellent for cultural attendance given the high educational levels and general affluence. A moderate demand to rent the venue was identified.

The key challenge highlighted by the consultant will be for PACE to raise the needed capital funding. Working with Mr. Haynes, the consultant calculated that the remaining fundraising requirement is \$138.4 Million which the consultant said should be raised by September of 2016. It was further concluded that the funds need to be raised by the fall of 2016. Should ground be broken in that year, the Center would be ready to open in the fall of 2019.

Councilmember Stokes said he was appointed by Mayor Balducci to serve as liaison to the project. Part of the reason behind a public investment in the project is the desire to have some control over the programming, making it available to everyone. He said the work of the Commission has been crucial in helping to move the project forward.

Ms. Byrne described the concept for an Education Center to replace the planned cabaret. It may be less expensive to construct an education center, it would contribute to the Center's bottom line, and it would provide even greater access to the community. The flexible space could be configured as a studio theater, or with a flat floor suitable to conducting master classes.

Councilmember Stokes concluded that the desire is for the Center to increase participation in the arts and encourage contributions from funders in the community for a variety of organizations and programs.

- ii. Arts Day in Olympia

Chair Jackson encouraged the Commissioners to participate in Arts Day on March 4.

7. CORRESPONDENCE, INFORMATION

A. Written Correspondence - As Noted

B. Information - As Noted

- i. Future Agenda Items

- ii. Committees

- iii. Public Art Program Funds

8. ADJOURNMENT

Chair Jackson adjourned the meeting at 6:40 p.m.

Department of Planning and
Community Development

Action & Discussion

Action and Discussion

Tuesday, April 7, 2015

Bellevue Arts Commission

Unity Performing Arts Center

UPAC is a 270 seat venue in east Bellevue on 164th NE and NE 4th, east of Crossroads.

It offers state of the art digital sound and lights, a very nice lobby and plenty of parking. They are looking for arts organizations to perform there. The facility is associated with the Unity Church, but they are making available for anyone to rent.

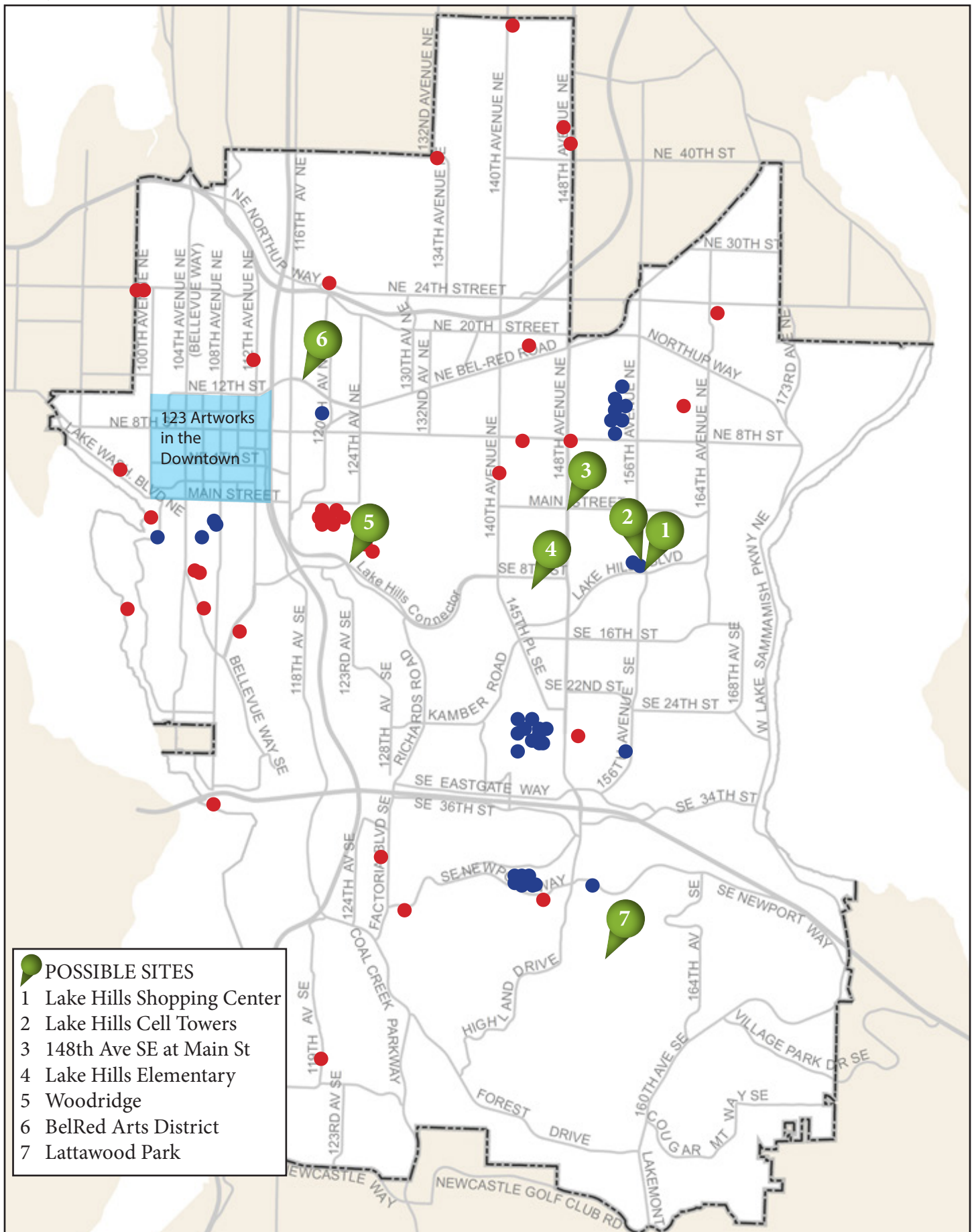
At today's meeting, UPAC Arts Advocate Jody Montague will provide more information about the facility and respond to commissioner questions. Future plans include replacing pews with comfortable, portable seats to build more flexibility into the space. Eventually they plan to look for funding to help with their facility updates.

UPAC's next production will be "The Rosemary Clooney Songbook" concert on April 11th at 7:30PM. Tickets will be available through www.brownpapertickets.com.



<http://www.unityofbellevue.org/upac-unity-performing-arts-center-events>

Citywide Public Art



Red dot: Owned by City of Bellevue

Blue dot: Owned privately/other organization

Action and Discussion

Tuesday, April 7, 2015

Bellevue Arts Commission

Neighborhood Public Art Sites

The Arts Commission has directed staff to begin planning of neighborhood public art projects. This is an initial analysis of potential sites that were identified by the Arts Commission at their September 9, 2014 meeting. Analysis is based on site visits and a review of available Rights of Way, or other City-owned properties. All sites would need coordination with other city departments to ensure that a site is viable.

Arts Commission Proposed Locations/Neighborhoods:

1. Lake Hills Shopping Center – adjacent to the library
2. Lake Hills Cell Towers along 156th Ave NE
3. 148th Ave SE at Main Street
4. Lake Hills Elementary (vicinity)
5. Woodridge (SE 8th and Lake Hills Connector)
6. Arts District
7. Neighborhood Parks
 - Lattawood Park
8. Other neighborhood parks

Staff Prioritization of Most Viable Locations:

1. **Lake Hills Cell Towers along 156th Ave NE**
2. **Lattawood Park**
3. Woodridge (SE 8th and Lake Hills Connector)

1. Lake Hills Shopping Center – adjacent to the library



General Description: The library is prominently located in the neighborhood and serves as an important community space. The library and adjacent buildings have been developed close to zero lot line. At the corner of Lake Hills Boulevard and 156th Ave SE, there is a small gathering space with benches and surrounding landscaping. There is roughly 22 feet from the back of the sidewalk to the ROW line at the corner. This would have to be confirmed with a survey. Overall, the corner is very well maintained and has quite attractive landscaping. Since this area was developed as part of the Lake Hills Library construction, the City would need to work closely with the library if this site was selected. Other areas adjacent to the library have extremely limited ROW.



Pros:

- Lake Hills has very little public art (adjacent Lake Hills Library is only location)
- Important neighborhood location
- Once-active neighborhood association could use a new project to reenergize group
- There is available ROW

Cons:

- Site is already attractively landscaped
- Space for an artwork limited: artwork may need to be set back from the corner to allow proper site lines for traffic

Staff Conclusion: Given that this site is already an attractive location that has seen recent reinvestment with the Lake Hills Library construction, there appear to be better locations for public art in the Lake Hills area.

2. Lake Hills Cell Towers along 156th Ave NE

General Description: The reinvestment in the properties on the northwest corner 156th Ave. NE and..., which include the Lake Hills library and the newly redeveloped shopping center, dramatically improves this important neighborhood location. PSE has installed three large equipment poles in front of these improvements.

This intersection was identified as a neighborhood identity point, and 156th in front of the shopping center is identified as a Shopping Street in the update of the Comprehensive Plan – meaning this location should have an enhanced treatment that promotes this as an important neighborhood place and that the streetscape should be designed to operate as a neighborhood’s “main street.”

City staff has already previously met with PSE to discuss attaching art to the poles and PSE will allow it the poles have been built to support heavy equipment high on the pole in severe wind conditions. Artwork attached lower on the poles shouldn’t compromise the structural integrity of the pole or present a risk on injury if the artwork is secured properly.

The PSE poles are highly visible and can be seen from far down 156th both north and south. Adding artwork to the poles could reduce their impact to the streetscape, support neighborhood character, and involve local residents in improving this important community location. With no sidewalks on the east side of 156th Ave, the existing sidewalks of the west side need to draw people to use them. Artwork attached to the poles could help draw people to a safer place to walk and turn the poles into a more interesting landmarks in the streetscape.



The above image shows the view of the PSE poles from 156th looking south. A rough estimate of the poles width is approximately 3 feet at the base.



Pros:

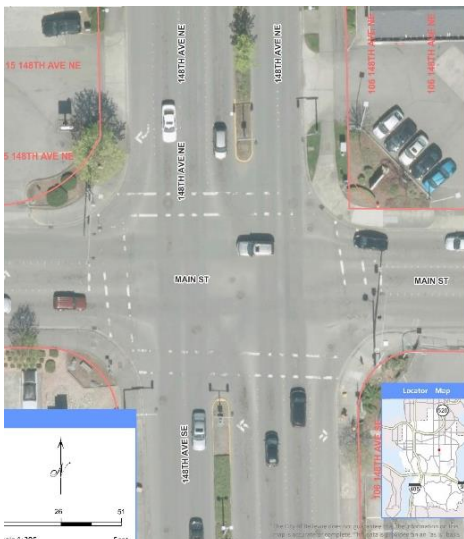
- Lake Hills has very little public art (adjacent Lake Hills Library is only location)
- Important neighborhood location
- Once-active neighborhood association could use a new project to reenergize group
- Artwork can help soften the impact of the poles
- Poles are built to hold weight
- PSE has agreed to artwork being attached to the poles
- Artwork would not represent a reduction to available landscaped area, nor would it reduce sidewalk area

Cons:

- Artwork can't completely solve the visual problem of the poles

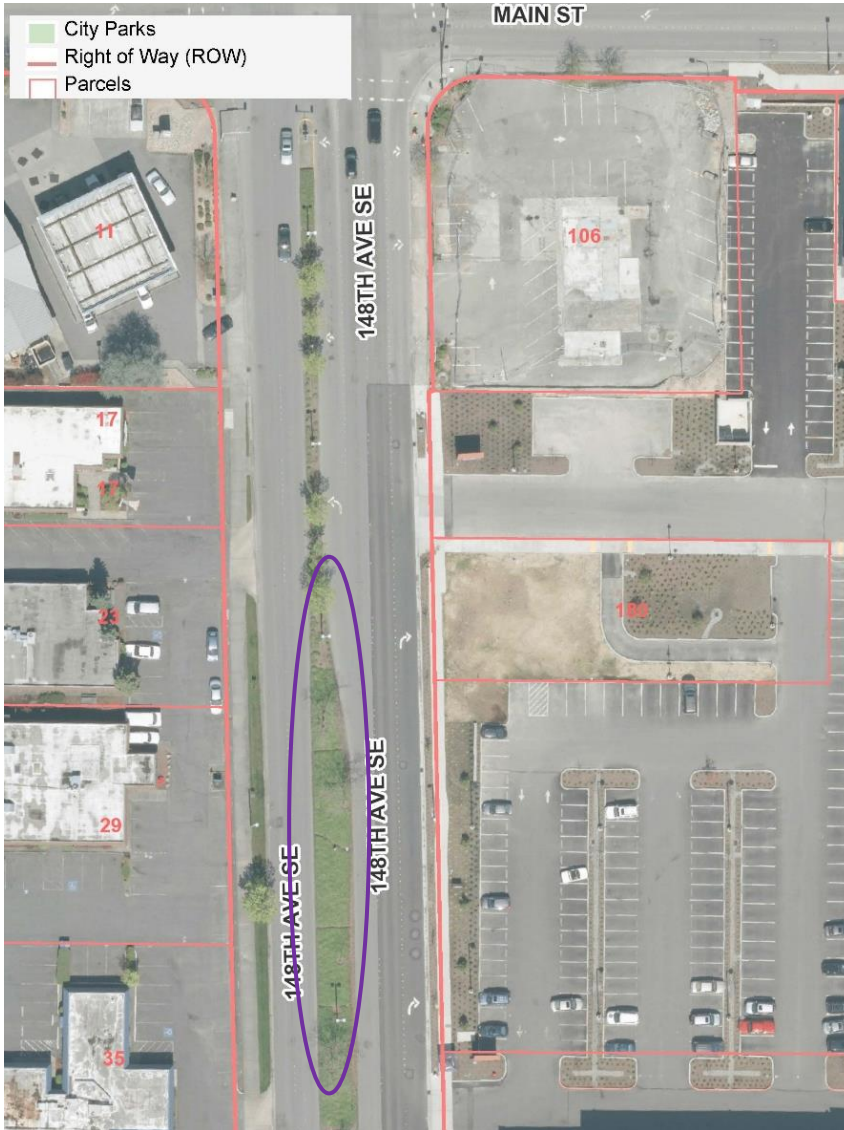
Staff Conclusion: This would be an excellent location for a neighborhood public art project.

3. 148th Ave SE at Main Street



General Description: 148th Ave is an important arterial that has a consistent corridor treatment. The intersection at Main is an important neighborhood location given the adjacent shopping center and local stores. This is also the location of a large church and HopeLink, a regional non-profit that provides human services to the community and serves as an umbrella organization for other human services providers. This section of 148th Ave NE has been identified in the update to the Comprehensive Plan as a Shopping Street, meaning that these streets should be designed or enhanced to operate as the neighborhood's "main street." This designation can include public art among other amenities.

Opportunities for public art in the ROW are very limited at the intersection of Main and 148th Ave NE.



Alternatively, there is a very wide median to the south of the intersection on 148th Ave NE that is a possible site for a public art project.

Parks department staff has indicated that they would like to replant the median along 148th south of Main Street. Parks is looking to redesign and construct the median to be more hospitable for plantings and would be excited to collaborate with the Arts Program on incorporating artwork.

In the past, however, Transportation has not wished to place anything in a median that could hurt someone in a vehicle crash. In addition, there could be an objection to anything that would encourage pedestrians crossing to the median to explore it.

Design of the plantings would be managed by the Enhanced Right of Way and Urban Boulevards work group, which has previously worked with the Arts Program on the Bridle Trails and the Newport Hills Neighborhood Art Projects.

The median south of the left turn lane (shown at left) is approximately 18 feet wide. This would be enough room to incorporate an artwork and landscaping.

Pros:

- Lake Hills has very little public art (Lake Hills Library is currently only location)
- There is significant space for an artwork



- The art could leverage the planned landscaping in the median to have a greater impact
- Very visible and active area: lots of people driving, walking, waiting for buses nearby
- Artwork could serve as a landmark for the Lake Hills Neighborhood along the 148th corridor
- An important location for the neighborhood and the city

Cons:

- There is a lot of activity in the area
- The artwork would be isolated in the median
- Transportation safety may not allow art in the median for safety reasons

Staff Conclusion: This could be an opportunity for a prominent public art project. However, this may not be an appropriate neighborhood public art project given the isolation of the artwork in the median and potential safety concerns. Staff recommends vetting the site with Transportation and to keep in contact with the Parks Department regarding their plans for renovating the median and revisit a potential public art project when the schedule and scope of the Parks Department work is more clearly defined.

4. Lake Hills Elementary (vicinity)



Cons:

- Artwork could add visual clutter to an area with a lot of children running around creating a potential safety issue
- Limited ROW available for a public artwork
- The one identified open area is on school property. This partnership would be challenging given the clear process outlined in the Neighborhood Public Art Program guidelines.

Staff Conclusion: This is a challenging location for a neighborhood public art project. Artwork possibly could be located on school property but an agreement with the school would be necessary and there potentially would be ambiguity about whether this would truly be a neighborhood project or a school project. Staff does not recommend pursuing this location for siting a neighborhood public art project.

5. Woodridge (SE 7th and Lake Hills Connector)



General Description: This is an important intersection on Lake Hills Connector that is the main entrance to the Woodridge neighborhood. SE 7th Place is also a key route to Kelsey Creek Farm. There is substantial ROW containing mostly natural and wetland areas, and walking trails. One potential site is located on SE 7th, in a clearing adjacent to a path leading to Lake Hills Connector. There is a bus stop at the end of the path on Lake Hills Connector. This location would be visible from both SE 7th Place and Lake Hills Connector, but it would be largely oriented to the neighborhood.

This site could feature an artwork in the clearing closer to SE 7th or the artwork could be associated with the bus stop on Lake Hills Connector, or both.



Pros:

- Great visibility from the Woodridge neighborhood as well as the potential to be visible from Lake Hills Connector.
- Potential site is City-owned ROW
- Integration with the existing bus stop and path is possible
- Natural setting evokes the “City in a Park” theme
- Adjacency of nearby residents, stakeholders
- Close to nature walking trails

- Along a main route into the Woodridge neighborhood
- There is limited public art in the area – Kelsey Creek Farm has two small public artworks

Cons:

- Staff needs to confirm that work could occur at the site given the proximity of wetland and natural areas

Staff Conclusion: This could be an excellent opportunity for a neighborhood-oriented public art project.

6. BelRed Arts District

General Description: BelRed is Bellevue’s only designated arts district. This area, where already many of the city’s artists and arts groups make and refine their craft, will see dramatic change over the coming decade from new construction of commercial, office and residential developments as well as the Eastlink Light Rail line. The development of each of the three light rail stations located in BelRed (Hospital, 120th, and 130th Stations) will include large mostly integrated artworks. There is also a potential additional location for a standalone artwork at the corner of 136th Place NE and NE Spring Boulevard along the alignment that Sound Transit is investigating.

While light rail development will bring a significant investment of new public artworks to BelRed, there are other key locations that could be considered. Highlighted in the BelRed Art Plan (included in the BelRed Corridor Plan) are a number of such locations. However, many of these locations are planned to be redeveloped making investment of a more permanent public artwork difficult at this time.



One location that has been identified as a potential site for art is where the planned Spring Blvd is set to intersect NE 12th Street. This location is being redeveloped as part of the Spring Blvd construction and has been previously identified in the BelRed Corridor Plan as a gateway. The site will be visible from Spring Blvd but also has the potential to be visible from the light rail line and the BNSF trail, which the site overlooks.

Pros:

- Very visible site that has been identified as a gateway opportunity for BelRed
- Artwork could be viewed from the street, the future light rail line, and the future BNSF trail
- Transportation department is very open to an artwork at this location

Cons:

- Insufficient resident population in the area for a neighborhood public art project



Figure 18 – BelRed Neighborhood Entry Node – Concept Plan



Staff Conclusion: This would be an excellent site for public art, however it may not be suitable for a neighborhood public art project. This opportunity as a potential public art location should be explored as the project continues to develop and the construction schedule is defined.

7. Lattawood Park



General Description: Lattawood Park is a beautiful community park that is located in the Cougar Mountain Lakemont neighborhood. It has a small play area, a basketball hoop, some open turf, picnic tables, and a beautiful trail through a natural area on the east side of the park. The park is a welcoming community space for adjacent neighborhoods.

Parks Department staff supports the idea of Lattawood Park as a site for a neighborhood public art project. Like all neighborhood public art projects, Parks would like to see inspiration for the artwork drawn from both the site and surrounding neighborhood. Additionally, siting the artwork would need to be coordinated with Parks maintenance.

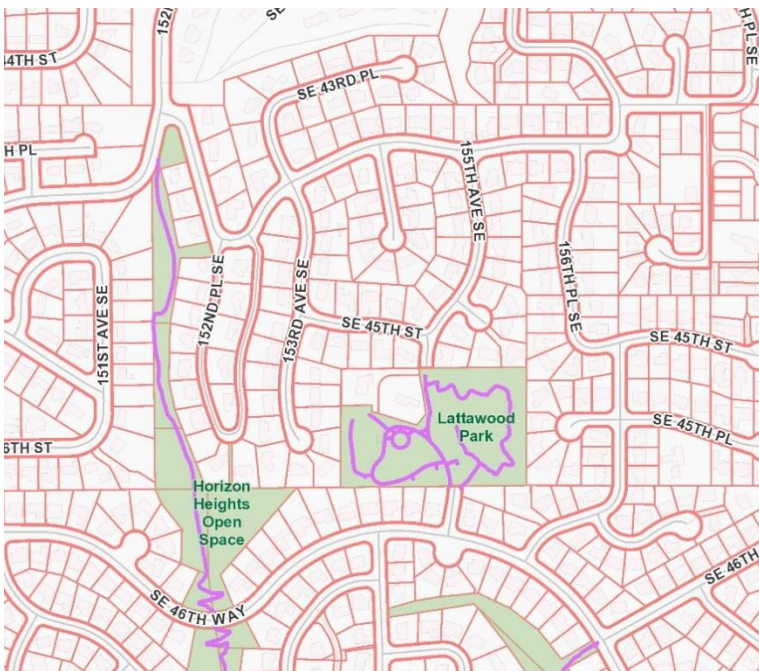
The map at the top left shows designated trails within the park.

Lattawood Park serves as an important connection between two adjacent suburban neighborhoods. The map at the lower left shows Lattawood Park and the adjacent areas. Without the park, nearby residents would need to walk long distances to connect from the north to the south.

During staff's site visit, a number of local residents were playing with their children in the park, sitting on a bench, or walking the concrete trail around the park.

Pros:

- Charming and beautiful neighborhood park
- Park provides an important connection between local developments
- There are a variety of places that an artist could site their work and draw inspiration from
- There are no public artworks in the area



- Park is an important community gathering place
- Parks department has agreed to this being a possible site for a neighborhood public artwork
- Relatively low park usage – project could help boost use of the park

Cons:

- Relatively low park usage
- Park can be difficult to find for those living outside the immediate area

Staff Conclusion: This would be a great location for a neighborhood public art project.

8. Other neighborhood parks

At this time, staff was not able to locate any neighborhood parks that had potential art incorporated into their planning. Staff consulted several Parks plans and found little specific reference to which parks should have art.

Staff Conclusion: Staff will continue to look for parks that can have artwork incorporated into them.

Quick Business

Tuesday, April 7, 2015

Bellevue Arts Commission

1.

2.

3.

Department of Planning and
Community Development

Reports

Tuesday, April 7, 2015

Bellevue Arts Commission

Project Updates

Art Walk

Meydenbauer Bay Waterfront Expansion

November 4, 2014: At its October 28th special meeting the commission voted to recommend that staff pursue developing a public art project proposal outlining key opportunities, themes and estimated budgets primarily for phase one of the park's development. Staff has contacted 4Culture to explore contracting with them to manage the public process for selecting artists for phase one.

December 2, 2014: Parks staff will be hosting an Open House for the Phase 1 Design on Wednesday, December 3rd from 5:30-7:30 PM at Bellevue City Hall. Staff met with public art project management contractor from 4Culture to discuss managing artist selection for the project.

January 20, 2015: Staff has hired Cath Brunner of 4Culture to manage the artist selection process. Tentatively, we expect a jury panel to be assembled in February and artist selection to be complete in March.

February 10, 2015: At today's meeting staff will present a draft of the Call to Artists and discuss primary art opportunities, the proposed budget associated with each opportunity, and the artist selection process.

Update, April 7, 2015: An artist selection panel will meet on April 10th at 4Culture to review submitted artist applications and portfolios and select a short list of artists to interview for designated opportunities. On April 17th, interviews with the selected artists will be held at Bellevue City Hall and final recommendations will take place. Selections will be finalized once the artists are under contract. 4Culture contractor reported that a very good selection of 40+ artists have applied.

ArtMap – Downtown Bellevue

An update and reprint of the map was completed in September. Three thousand copies were printed. Boxes of maps were delivered to the Bellevue Regional Library and Meydenbauer Center Visitor Information, the Bravern (by request) and Service First, the City's key distribution point. More will be distributed to other locations as well.

Public Art in Neighborhoods

Newport Hills/Lake Heights

January 21, 2014: Artist Bruce Myers met with Metro maintenance crew to plan the installation of art for the bus shelters. The crew had been delayed and has asked Myers to modify the attachment mechanisms. Real Property staff is working with the Newport Hills Community Church to resolve easement issues for the Rain Chain site.

February 11, 2014: Artist Bruce Myers continues to work on the attachments needed to connect the art to the bus shelters. To date, the artist is waiting for Metro maintenance crews to install the new bus shelters. Once those shelters are in place the art located at the shelters will be installed. Following that, the boulders adjacent to the shelters along with the associated landscaping will be installed.

March 4, 2014: Easements have been signed for the Rain Chain site, so that all sites are secured.

April 1, 2014: The West Bus Shelter installation is scheduled for April 2nd. The installation will include Metro Crews removing the current station and installing a new, single bay shelter. Artist Bruce Myers will deliver the art components to be attached to the shelter, and work with Metro crew to attach.

May 6, 2014: Metro has postponed the West Bus Shelter installation until they can fit it into their schedule. The artworks for both shelters have been delivered to Metro and are awaiting installation of the shelters.

August 5, 2014. See supplementary report pages with progress photos. Boulder installation is underway.

September 9, 2014: New bus shelters are installed and art work is attached. Preliminary work is underway for completing new landscaping. Fabrication of Rain Chain elements is underway.

October 7, 2014: Installation of the boulders adjacent to the West bus shelter has begun. Installation of the boulders at the Rain Chain site is being planned and should be completed by the end of October. Landscaping of both sides of 119th Ave SE is being planned as well. Artist Bruce Myers held a workshop with several residents to plan the designs for the mosaics and to discuss their participation. Myers recently sent progress photos showing work prepping poles for Rain Chain and cutouts of several of the leaves, as well as an image of residents planning the mosaics. (see separate Image sheet.)

November 4, 2014: Artist Bruce Myers has held several workshops with residents to create the mosaics to be installed on a number of boulders. Giant boulders that surround the future location of the Rain Chain have been installed on the corner of the Church property. These boulders will frame the artwork. The remaining elements in the project are being planned for installation.

December 2, 2014: Artist Bruce Myers continues to work on the Rain Chain element at his studio.

January 29, 2015: Permits have been issued for the installation of the Rain Chain. Bruce Myers is continuing to work on the fabrication of the piece.

February 10, 2015: Bruce Myers continues to work on the fabrication of Rain Chain.

East Link Public Art

July 2, 2013: The lead artist team is compiling art opportunities along the East Link route. Arts Program staff met with the lead artist team and others to convey the Commission's suggestions made at the June 7th Bellevue Arts Commission meeting. In July, the lead artist will also be assembling selection panels to choose artists for individual stations.

August 8, 2013: At its July 2nd meeting Commissioners continued their discussion of art opportunities at the various stations. The Station naming process was discussed, and the Commissioner discussed how to most effectively communicate with Sound Transit regarding name preferences.

October 1, 2013: Commissioners met with Meta Artè, the lead artist team, and Sound Transit staff at the September Arts Commission meeting to discuss art opportunities at the East Main and the South Bellevue Stations.

November 5, 2013: Candidates for the artist selection panel for the 130th Avenue Station have been submitted to Sound Transit. Sound Transit staff has begun contacting candidates. City of Bellevue staff has also been working on the redesign of the City Hall plaza as part of the Downtown Station design. The plaza will be demolished as construction begins of the alignment Downtown and Sound Transit and City staff is working to come up with a design that allows the functions of both City Hall and the Downtown Station to operate cohesively. Artist Dan Corson, who worked with the City as part of the original City Hall design and created the artwork Root located on the plaza, has been a part of the discussion.

December 3, 2013: SStart staff has begun to contact citizens to serve on art panels. A presentation on how the SStart program works and how art enhances transit will be given to City Council is scheduled for Monday evening, December 9th.

****See following updates for individual stations. ****

130th St. Station

January 21, 2014: The first panel meeting to select an artist for the 130th station was held on January 15th. Artists will be interviewed on January 31st. Chair Tremblay participated on the panel and will report at today's meeting.

February 11, 2014: The 130th station panel interviewed the three finalists previously selected during the first panel meeting. An artist was selected by the panel. SStart staff are working to finalize the contract with the selected artist. SStart is working with City staff to identify panel members for selecting an artist for the Downtown station.

April 1, 2014: the 130th St. Station artist is Patrick Marold.

Downtown Station

May 6, 2014: The first and second panel meetings took place at the Bellevue Arts Museum to select artists for the opportunities for art that have been identified by the Sound Transit staff and the Lead Artist Team. Commissioners Malkin and Jackson took part in the panel. The artists selected are Ball-Nogues Studio and Paul Maroni.

South Bellevue Station

May 6, 2014: The panel met to create a list of artists to interview for the opportunities at the South Bellevue Station. The panel met in the historic Winter's House to review the artists and selected six artists to interview for the opportunities that were identified at the station. Commissioner Ludeña participated in the panel. Interviews are scheduled for May 8th.

November 4, 2014: Design work continues on the art components. At today's commission meeting, STart Manager Barbara Luecke and John Walser, Project Architect, will update the commission on recent design progress.

Public Art Maintenance

Relocation of *Wild in the City*

January 20, 2015: East Link construction along 112th Ave. SE is requiring the City to relocate a pump station to where we have an art work we own jointly with that property owner. Staff in working with the City, the property owner and the artist to relocate the work to about the equivalent of two blocks north. The artist, Norm Taylor, has approved the site. Management of the site has changed hands and staff is in the process of contacting them. The new site is in City right of way. The move will be paid for by the Utilities project. Arts Program staff is getting estimates from qualified contractors to move the art. It is expected to be moved mid-February to early March.

Update, April 7, 2015: The artwork was successfully removed from the site and placed into temporary storage. Two sites on the property are under consideration, one in front of the new Bellevue Courthouse, now undergoing extensive tenant improvements, and a site about 1.5 blocks north of SE15th site. Staff is working with various project managers to resolved the site selection

Repairs for Arc with Four Forms

January 20, 2015: This sculpture was damaged during a December windstorm. Art Site is repairing the damaged portion of the work and will clean the sculpture and base. Work is underway.

February 10, 2015: Repair of artwork is underway.

Update, April 7, 2015: Repairs are completed.

Season's Shelters

Update, April 7, 2015: Staff noticed that a component of the artwork, located at 140th and Main Street, had been damaged and was in need of immediate repair. There was also a large tag on the seat that is both a part of the artwork and serves the bus shelter. Staff contracted with Artech to do the repairs. Artech consulted with artist Karen Guzak prior to making repairs. The repairs have been completed.

City-wide version for ArtMap

February 11, 2014: Staff is confirming the locations of two artworks that have recently been relocated during the construction at the Bellevue Botanical Garden. Once the new locations are identified, the map will be printed and distributed.

January 20, 2015: Staff is reviewing final edits of the City-wide ArtMap. Printing should be underway in the next few weeks.

Other Projects and Programs

Cultural Demographic Survey

January 21, 2014: Staff is reviewing a full draft of the final report.

September 9, 2014: Consultant is completing extensive revisions. Staff expects to see the new draft in September and will work with Consultant to complete the study.

October 7, 2014: Staff is awaiting revisions from the consultant.

November 4, 2014: Revised draft was received and is under staff review.

Cultural Compass

January 21, 2014: At today's meeting the committee will report on progress organizing focus groups.

February 11, 2014: Staff will be organizing and scheduling focus groups to take place in the near future.

April 1, 2014: Three focus groups are scheduled for April and one for May. Details will be presented at today's meeting.

May 6, 2014: Three focus groups have been held to date. Specific discussion topics included Public Art, Facilities and Supporting Artists and Arts Groups. A fourth focus group is scheduled for Saturday May 10th. This group will focus on Cultural Diversity and include shorter discussions on issues related to the other goals that are a part of this update. Attendance of the first three focus groups was light but the

discussion was constructive and will provide value direction moving forward. Staff is compiling notes from the focus groups and considering next steps in the process.

Storefronts Bellevue

August 5, 2014: Meydenbauer Center is the newest partner for our Storefronts Program. A new display opened concurrently with Bellwether, and information is included in the Bellwether catalog. Susan Brown's Percy Forde Silbert's Complete Guide to the Ocean and Celeste Cooning's Lotus Flower and Milk and Honey are on display, occupying 6 display windows facing NE 6th.

September 9, 2014: New work will be installed in the Meydenbauer windows this month. The current contract will expire in October, and staff is discussing with Shunpike the possibility of contracting for another year.

October 7, 2014: New work has been installed in the Meydenbauer windows. The two artists being showcased in the windows are KC Madsen and Paul E. McKee. KC Madsen is showing her artwork Tide and Elements, made of industrial paper, paint, and encaustic, and Paul E. McKee is showing his work flâneur, which is a representation of the reflections seen on the buildings in Downtown Bellevue.

January 20, 2015: The Arts Program will partner with Meydenbauer Center to continue the program in its display windows along NE 6th.

Update, April 7, 2015: Meydenbauer Center is now featuring two new artworks in its windows by artists Philip LaDeau and Serrah Russell. On display February 19th-June 19th, Philip's piece, entitled *In Window//In Vitrine* explores architectural space and light, and Serrah's piece, entitled *ESCAPE*, explore the human experience and our surroundings.

Funding, 2015

January 20, 2015: Applications for 2015 were due January 12th. Eleven EAP applications were received along with 21 Special Projects applications. The number of EAP applications is consistent with last year. The number of Special Projects applications is down 4 from last year, but is still at a high number. Panel interviews and deliberations are in the process of being scheduled for the week of January 26th.

February 10, 2015: At today's meeting, the Allocations Committee will present its funding recommendations for Eastside Arts Partnerships and Special Projects recipients. The Arts Commission will vote on the Committee's recommendations.

Update, April 7, 2015: All organizations have been notified of their funding awards.

Arts and Heritage Day in Olympia, 2015

January 20, 2015: Arts Program staff has traditionally assisted with setting up appointments with Bellevue's state legislators on Arts and Heritage Day, which this year will be on March 4th, 2015.

Commissioners are invited to participate.

Update, April 7, 2015: Completed March 4th

Ethnic Showcase

Completed.

For the past several months City staff members Shelley Brittingham and Mary Pat Byrne collaborated with a multi-agency team called Arts and Social Change to organize a series of opportunity for emerging ethnic artists to develop professionally. In the fall two free daylong workshops were held in Seattle at which artists learned about contracts, booking, and other “tools of the trade.” Experts were on hand to provide one-on-one evaluations of websites and social media activity and a professional photographer was available to take professional photos of individual performers and groups. On January 27th a half-day showcase at Meydenbauer Center featured about ten juried performers, many of whom attended the workshops last fall. Also invited were members of local arts agencies and others who book artists such as a representative of the Bellevue Downtown Association. Over 200 people registered for the event. Councilmembers Stokes and Lee both attended and gave some words of welcome. The organizers felt the event was very successful at the Meydenbauer and plan to make Meydenbauer Center the site for the event in the future.

Tuesday, April 7, 2015

Bellevue Arts Commission

Project Updates – Tateuchi Center

City Collaboration with PACE

March 4, 2014: City Council, at its February 10th study session, directed staff to draft an agreement to collaborate with the PACE Board to conduct a process that will accomplish several goals: build awareness in the community, build a regional coalition of Eastside Cities' leadership to support this, identify and resolve any issues that could become "fatal flaws" for the partnership, and determine the City's options for supporting the project. An agreement to collaborate is being drafted and a more detailed work plan is under development. The work plan will, among other things, describe the role the Arts Commission will play in this effort.

April 1, 2014: City Council appointed Council member John Stokes as the Council lead/liaison for this effort. A memorandum of understanding between the City and PACE has been drafted and representatives of both will discuss the draft this week.

May 6, 2014: PACE and the City are in agreement on the memorandum of understanding which provides a framework of tasks and timeline for the collaboration between PACE and the City. The MOU is expected to go to Council for approval on May 12. Staff is researching legal and financial options for supporting the Tateuchi Center for City Council to consider and is working towards providing Council with a preliminary report in the fall. Work is also beginning on outlining what a public awareness effort would look like.

August 5, 2014: At today's meeting the Commission will start to look at the specifics of the Citizen Outreach campaign and the Commission's role within the campaign.

September 9, 2014: At today's meeting, staff will discuss the outreach presentation and provide a short update on other committee activities.

October 7, 2014: Scheduling for neighborhood presentations has begun. Newport Hills/Lake Heights has confirmed. Surrey Downs and Bridle Trails have both tentatively agreed to presentations, pending their boards' approvals. All dates are in November. An article for It's Your City is being finalized, and a video segment for Lake to Lake on BTV will begin airing October 7 or 8.

On October 20th staff will provide Council an update regarding progress on all fronts of the MOU project.

November 4, 2014: Lake to Lake Segment is currently airing on BTV. An article in October's It's Your City was published in the print version and is also available online. Bridle Trails Community Club declined a presentation for November, and staff is requesting a January date.

B Squared, the consulting firm hired to independently evaluate Tateuchi Center's 10-year operating pro forma and programming and audience availability, completed their first site visit in October. During the visit they interviewed 12 people including PACE board members, leaders of regional arts organizations that may perform at Tateuchi Center, and other leaders in the arts community. More interviews are planned for the next site visit, scheduled for November. In addition, they met with committee members to discuss process and expectations and the project's status.

December 2, 2014: B Squared completed their second site visit in November, meeting with the MOU committee and interviewing key users. Staff has hosted community meetings in Surrey Downs and Newport Hills. Chair Jackson represented the Arts Commission at both meetings, joining Councilmember John Stokes, Executive Director and CEO John Haynes of PACE, Manager of Administration and External Relations Christina Green of PACE and City staff. Attendance of the meetings was modest. More community meetings are being scheduled for December and January to continue the discussion.

January 20, 2015: The COB/PACE committee received a draft report from the B Squared Consultants on January 8th. The consultant was to address four areas:

- Assess the availability of programming*
- Identify and assess the potential patron demand*
- Provide a ten-year operating pro forma to demonstrate whether the facility is sustainable over the long term*
- Discuss critical keys to success for the project, based on the consultants' experience with and knowledge of performing arts centers nationwide.*

Staff is scheduled to present this report as well as other information developed as part of the MOU the City signed with PACE last May. The Arts Commission meets the following day and staff will be prepared to discuss the report to Council and Council's response at that time.

February 10, 2015: In January Commissioner Wolfteich joined PACE CEO John Haynes and Arts Specialist Mary Pat Byrne to present information on the City/PACE collaboration under the terms of the City/PACE MOU which includes outreach to the community to raise awareness of Tateuchi Center and of the City's due diligence effort to help decide whether to invest in Tateuchi Center. On February 9th City Consultant Steven Bronfenbrenner of B Squared Consulting will present the findings of a feasibility study he performed to independently assess the audience potential, venue utilization potential, operating pro forma, to describe key factors to success for Tateuchi Center and, based on his national experience, provide the City with any additional observations and recommendations important to consider in the context of a potential investment.

Update, April 7, 2015: Economic Impact Study is near completion. B Squared Consulting has completed their first phase and is now moving on to Phase Two. In this Phase the consultant will work with PACE and BCCA to develop a Facilities Cooperative Framework to help ensure the success of both organizations.

Tuesday, April 7, 2015

Bellevue Arts Commission

Project Updates – Comprehensive Plan Update

Comprehensive Plan Update

February 11, 2014: PCD staff continues to work through comments collected during outreach efforts, internal reviews, and discussions with the Arts and Planning Commissions.

March 4, 2014: Arts Program staff Scott MacDonald will share draft policies and discuss next steps at today's meeting.

May 6, 2014: City staff continues to make suggestions for edits and additions to the proposed and existing policies.

October 7, 2014: City staff is continuing to work with Boards and Commissions on proposed policy changes and updates that will go into the public review draft of the Comprehensive Plan Update. Staff will present changes and updates to arts-specific policies to the Arts Commission at the November 4th Arts Commission meeting prior to the completion of the public review draft.

November 4, 2014: City staff has determined that a discussion with the Arts Commission regarding the changes and updates to the arts-specific policies will take place at a later meeting. No significant progress has been made since the last update.

December 2, 2014: City staff is meeting with the Planning Commission on December 10th regarding updates to the Comprehensive Plan before all material is compiled into a draft for public review and comment early next year.

January 20, 2015: City staff is working with consultants to finalize a public review draft of the Comprehensive Plan Update. The public review draft of the Plan is expected to be released for public comment next month.

February 10, 2015: Staff will be presenting the public review draft to the Planning Commission on February 11th.

Update, April 7, 2015: At the Joint Boards and Commissions meeting that took place on February 25th attendees requested the need for a policy specific to neighborhood public art. Arts Program staff, with the help of Chair Jackson and Vice-Chair Manfredi, drafted a proposed policy for approval by the Planning Commission. The Planning Commission approved the

following policy:

Support community efforts to develop art that enhances neighborhood character, builds community, and engages residents in the artistic process.

At their March 25th meeting, the Planning Commission approved their recommendations for the Comprehensive Plan. Their recommendations will be presented to City Council for review.

Other policies specific to the arts included in the document:

Arts & Culture

UD-X1. *Encourage art and arts programs that create understanding and respect among the city's diverse cultures.*

UD-36. *Encourage development, display and performance opportunities for a wide range of artistic expression throughout the city.*

UD-X2. *Encourage the development of a wide array of cultural facilities throughout the city and the Eastside through local and regional strategies.*

UD-X3. *Encourage lifelong arts education for all skill levels.*

UD-35. *Support a variety of artwork in public places, such as parks, public buildings and plazas.*

UD-37. *Expand the city's public art collection and involve the community in the selection of new major items.*

UD-X4. *Support artists and arts groups working in the community through city programs and private partnerships.*

There are also a number of policies that include components related to the arts throughout the plan.

Department of Planning and
Community Development

Information

Ballet Bellevue

Ballet Bellevue is one of Bellevue's oldest arts organizations. It includes a ballet company and dance classes. For decades they rented a city-owned building on the west edge of the Downtown Park. The school ran from that building, and their ballet company performed at Meydenbauer and other places. Because the park is going through major renovation paid for by a levy, they were given notice about a year ago to relocate. A few weeks ago they did so.

They have temporarily located in two spaces for classes, the Northwest Arts Center for the younger students, and a warehouse in Downtown Bellevue near the post office for the older students. The lease in the warehouse goes until August, 2015, at which point the building will be demolished for new development on that block. Ballet Bellevue is making plans for their next move. The ballet company rehearses at PNB's Francia Russell Center in Bel Red and at PNB's school in Seattle.

MacDonald, Scott

From: Director@culturalaccesswa.org <Director@culturalaccessfund.org>
Sent: Monday, March 30, 2015 4:20 PM
To: director@culturalaccesswa.org
Subject: Update - SB 5463 in House Rules Committee!

(Cultural Access Washington supporters bcc'd here)

Good afternoon!

Thank you for your advocacy and for your efforts! In no small part because of that advocacy, SSB 5463 is currently in the House Rules Committee having passed on the floor of the Senate by a vote of 44-4!

This week, the House will be discussing and debating the State Budget and we don't expect movement on Cultural Access Washington/SSB 5463. Updates will be sent out as we have them and please visit our Facebook page and website for additional information. When the bill DOES move, we will again send out a call to action asking you to contact your legislators, to activate your networks, and to reach out broadly encouraging a favorable vote on SSB 5463.

Please don't hesitate to reach out with any questions or concerns!

Best,

Joy

Joy Langley
Executive Director, Cultural Access Washington
<http://www.culturalaccesswa.org/>
[206.395.8279](tel:206.395.8279)

LIKE US! www.facebook.com/CulturalAccessWA
FOLLOW US! @CulturalAccessW



WASHINGTON STATE LEGISLATURE

Legislature Home | Senate | House of Representatives | Contact Us | Search | Help | Mobile

Inside the Legislature

- ★ Find Your Legislator
- ★ Visiting the Legislature
- ★ Agendas, Schedules and Calendars
- ★ Bill Information
- ★ Laws and Agency Rules
- ★ Legislative Committees
- ★ Legislative Agencies
- ★ Legislative Information Center
- ★ E-mail Notifications
- ★ Civic Education
- ★ History of the State Legislature

Outside the Legislature

- ★ Congress - the Other Washington
- ★ TVW
- ★ Washington Courts
- ★ OFM Fiscal Note Website



[Bill Information](#) > [SB 5463 - 2015-16](#)

Search by Bill Number



[Search the full text of a bill](#)

SB 5463 - 2015-16



[\(What is this?\)](#)

[Comment on this bill](#)

[\(What is this?\)](#)

Concerning access to and creation of cultural and heritage programs and facilities.

[Go to documents...](#)

[Go to videos...](#)

History of the Bill

as of Tuesday, March 31, 2015 4:28 PM

Sponsors: Senators [Hill](#), [Kohl-Welles](#), [Fain](#), [Fraser](#), [Litzow](#), [King](#), [Angel](#), [Nelson](#), [Chase](#), [Pedersen](#), [Roach](#), [Liias](#), [McAuliffe](#)

Companion Bill: [HB 1107](#)

2015 REGULAR SESSION

- Jan 22 First reading, referred to Ways & Means. [\(View Original Bill\)](#)
- Feb 2 Public hearing in the Senate Committee on Ways & Means at 3:30 PM. [\(Committee Materials\)](#)
- Feb 9 Executive action taken in the Senate Committee on Ways & Means at 3:30 PM. [\(Committee Materials\)](#)
- Feb 10 **WM - Majority; 1st substitute bill be substituted, do pass.** [\(View 1st Substitute\)](#) [\(Majority Report\)](#)
Minority; without recommendation. [\(Minority Report\)](#)
Passed to Rules Committee for second reading.
- Mar 3 Placed on second reading by Rules Committee.
- Mar 4 **1st substitute bill substituted (WM 15).** [\(View 1st Substitute\)](#)
Rules suspended. Placed on Third Reading.
Third reading, passed; yeas, 44; nays, 4; absent, 0; excused, 1. [\(View Roll Calls\)](#)

IN THE HOUSE

- Mar 6 First reading, referred to Community Development, Housing & Tribal Affairs (Not Officially read and referred until adoption of Introduction report).
- Mar 17 Public hearing in the House Committee on Community Development and Housing & Tribal Affairs at 1:30 PM. [\(Committee Materials\)](#)
- Mar 23 Executive action taken in the House Committee on Community Development and Housing & Tribal Affairs at 1:30 PM. [\(Committee Materials\)](#)
CDHT - Majority; do pass with amendment(s). [\(Majority Report\)](#)

Mar 26 Referred to Rules 2 Review.

[Go to history...](#)**Available Documents****Bill Documents**

[Original Bill](#)
[Substitute Bill \(WM 15\)](#)

Bill Digests

[Bill Digest](#)
[Substitute Bill Digest](#)

Bill Reports

[Senate Bill Report \(Orig.\)](#)
[Senate Bill Report](#)
[Substitute Senate Bill Report](#)
[Substitute House Bill Analysis 2015](#)
[Substitute House Bill Report](#)

AmendmentsAmendment Name[5463-S AMH CDHT H2418.1](#)NumSponsor

CDHT

Type

Cmte

Description

Striker

Action**Fiscal Note (Available)**[Get Fiscal Note](#)[Go to history...](#)**Available Videos** (Video links take you to the TVW website)

Live video is available at the stated time. Archived video becomes available approximately two hours after the close of the hearing or floor session.

There are no videos available for this bill at this time.

COMMITTEE DESCRIPTIONS AND SUGGESTED ASSIGNMENTS

Below are suggested committee assignments for 2015. If you have any questions or would like to swap an assignment, please discuss with Chair Trudi Jackson.

2014-2015 Suggested Assignments	
Projects	Commissioners
Allocations	Becky Lewis
Allocations	Paul Manfredi
Allocations	Philip Malkin, chair
Annual Meeting	Trudi Jackson, lead
Bel Red Arts District	Carl Wolfteich, lead
Bel Red Arts District	Paul Manfredi, chair
Bellwether Sculpture Exhibit 2016	Carl Wolfteich
Bellwether Sculpture Exhibit 2016	Hugo Ludeña
Bellwether Sculpture Exhibit 2016	Philip Malkin, chair
Cultural Compass Update	All commissioners
Cultural Compass Update	Trudi Jackson, lead
East Link Public Art 120 th Spring District Station	Vikram Madan, lead
East Link Public Art Bel Red Station	Becky Lewis, lead
East Link Public Art Downtown	Philip Malkin, co-lead
East Link Public Art Downtown	Trudi Jackson, co-lead
East Link Public Art Hospital Station	Paul Manfredi, lead
East Link Public Art South Bellevue	Hugo Ludeña , lead
EastLink Public Art Main Street	Carl Wolfteich, lead
Executive Committee	Paul Manfredi
Executive Committee	Trudi Jackson, chair
Meydenbauer Bay Beach Park Phase 1	To be assigned
Neighborhood Public Art Project Leads Project A. TBD	Philip Malkin, lead
Neighborhood Public Art Project Project B. TBD	Becky Lewis, lead
Social Media - Lead	Hugo Ludeña, lead
Tateuchi Center Collaboration	All commissioners.

Tateuchi Center Collaboration	Trudi Jackson, lead.
-------------------------------	----------------------

Arts Commission Upcoming Agenda Items & Events

Meeting Date	Item	Type
2015		
April 7, 2015	BAC Regular Meeting	
April 10 & 17	Meydenbauer Bay Panel: Artist Interviews & Selection	
May 5, 2015	BAC Regular Meeting	
May 4	Council votes whether to invest in Tateuchi Center	
	VALA and ArtEast	
	Meydenbauer Bay Public Art Project	
	Neighborhood Public Art Projects	
	PACE	
June 2, 2015	BAC Regular Meeting	
tbd	Newport Hills art dedication	Event
	Committees	
	Bellwether	
July 7, 2015	BAC Regular Meeting	
	Committees:	
	Allocations – review guidelines	
	Bellwether	
August 4, 2015	BAC Regular Meeting	
	2016 Funding Guidelines	Action
	Bellwether Budget, Theme and Goals	Action
	Committees:	
	Bellwether	
September 1, 2015	BAC Regular Meeting	
Sept 7	Council approves 2016 Funding Guides	

[illegible]