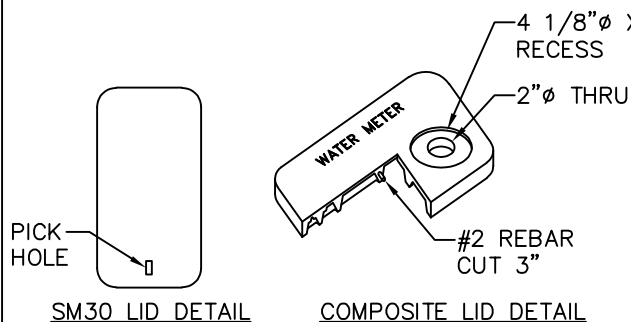


- (A) DUCTILE IRON TEE WITH 4" BRANCH, FL. WITH (3) GATE VALVES UNLESS OTHERWISE APPROVED BY UTILITY.
- (B) 4" GATE VALVE, FL.
- (C) 4" REDUCING COMPANION FLANGE WITH 2" TAP.
- (D) COUPLING, 2" MALE IRON PIPE THREAD BY 2" PACK JOINT (COMPRESSION FITTING) FOR COPPER, FORD C84-77-NL, MUELLER NO. P-15428N, OR APPROVED EQUAL.
- (E) 2" COPPER TUBING, TYPE K.
- (F) 2" STREET ELL, BRASS, FEMALE IRON PIPE THREAD BY FEMALE IRON PIPE THREAD.
- (G) 2" NIPPLE, BRASS, M.I.P.T. x M.I.P.T., LENGTH AS REQUIRED TO MEET PROPER GRADE.
- (H) 2" ANGLE METER VALVE WITH PADLOCK WINGS, FEMALE IRON PIPE BY FLANGE END FOR METER, FORD FV13-777W-NL, MUELLER NO. H-14286N, OR APPROVED EQUAL.
- (I) 2" COMPANION FLANGE, FORD NO. 7F FLANGE, OR APPROVED EQUAL. TO BE WIRED OR SECURED TO ANGLE VALVE.
- (J) METER BOX IN LANDSCAPING: CARSON INDUSTRIES 1730-18 BCF BOX. COVER SHALL BE COMPOSITE MATERIAL, MARKED "WATER METER", WITH 2" AMR RECESS (CARSON, FIBRELYTE FL36, OR NICOR B36).
- METER BOX IN SIDEWALKS AND AREAS WITH VEHICULAR TRAFFIC: OLYMPIC FOUNDRY SM30 BOX AND COVER.
- (K) TWO PIECE CAST IRON VALVE BOX TO FIT, RICH SEATTLE TYPE #045 - WITH RECESSED HANDLE LID, OR APPROVED EQUAL, SEE DETAIL W-11.

NOTES:

- SERVICE LINE SHALL BE PERPENDICULAR TO THE WATERMAIN, UNLESS OTHERWISE APPROVED BY THE ENGINEER.
- APPROVED BACKFLOW PREVENTION DEVICE MUST BE INSTALLED PER D.O.H. REQUIREMENTS. IRRIGATION OR FIRE SPRINKLER SYSTEM SHALL NOT BE PUT INTO SERVICE UNTIL THE BACKFLOW PREVENTION DEVICE IS APPROVED BY THE CITY OF BELLEVUE WATER QUALITY TECHNICIAN.
- CUSTOMER'S SIDE OF SERVICE SHALL NOT BE PLUMBED INSIDE THE METER BOX UNTIL THE METER IS SET.
- METER WILL BE SUPPLIED AND INSTALLED BY THE CITY OF BELLEVUE.
- SEE DETAIL W-55 FOR VALUE MARKER TO BE LOCATED IN VALUE BOX CONNECTION TO MAIN. FOR FIRELINE SERVICE ONLY.



JANUARY 2026

NO SCALE



City of
Bellevue

WATER UTILITIES

TITLE 2" IRRIGATION OR FIRE SPRINKLER
WATER SERVICE
(COMMERCIAL AND MULTI-FAMILY)

NO. W-32