

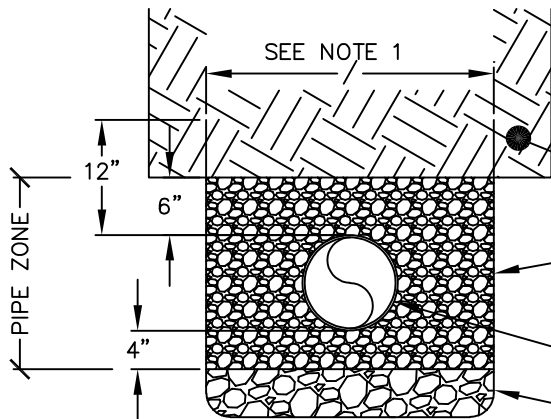
RIGID PIPE BEDDING

COMPACTED BACKFILL PER STANDARD DETAIL S-14.

SPRING LINE

COMPACTED BEDDING GRAVEL PER SECTION 9-03.12(3), "GRAVEL BACKFILL FOR PIPE ZONE BEDDING", OF THE WSDOT STANDARD SPECIFICATION.

FOUNDATION MATERIAL IF REQUIRED (SEE NOTE 2).



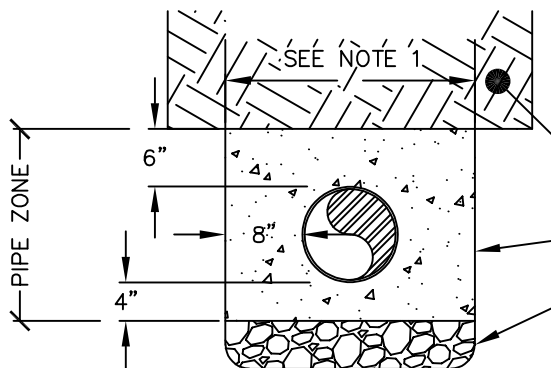
FLEXIBLE PIPE BEDDING

COMPACTED BACKFILL PER STANDARD DETAIL S-14.

COMPACTED BEDDING GRAVEL PER SECTION 9-03.12(3), "GRAVEL BACKFILL FOR PIPE ZONE BEDDING", OF THE WSDOT STANDARD SPECIFICATION.

PVC PIPE

FOUNDATION MATERIAL IF REQUIRED (SEE NOTE 2).



CONCRETE ENCASEMENT

COMPACTED BACKFILL PER STANDARD DETAIL S-14.

2000 P.S.I. CONCRETE (SEE NOTE 3)

FOUNDATION MATERIAL IF REQUIRED (SEE NOTE 2).

NOTES:

1. MAXIMUM WIDTH OF TRENCH AT TOP OF PIPE ZONE:
 - 36" FOR PIPE UP TO AND INCLUDING 18" NOMINAL DIAMETER.
 - NOMINAL DIAMETER PLUS 18" FOR PIPE LARGER THAN 18" NOMINAL DIAMETER.
2. EXCAVATE UNSTABLE MATERIAL DOWN TO FIRM SOIL AND REPLACE WITH FOUNDATION MATERIAL PER SECTION 9-03.9(17), FOUNDATION MATERIAL CLASS A AND CLASS B OF THE WSDOT STANDARD SPECIFICATIONS. STABILIZATION FABRIC MAYBE RQUIRED DEPENDIING ON CONDITIIONS.
3. THE CONTRACTOR SHALL BE RESPONSIBLE FOR ANCHORING PIPE TO PREVENT FLOTATION DURING CONCRETE PLACEMENT.
4. COMPACTED CRUSHED SURFACING PER SECTION 9-03.9(3), "CRUSHED SURFACING", OF THE WSDOT STANDARD SPECIFICATIONS CAN ALSO BE USED AS BEDDING GRAVEL.



City of
Bellevue

SEWER UTILITIES

TITLE

PIPE ZONE BEDDING