

SECTION VIEW

OFFSET FRAME SO THAT TEE
IS VISIBLE AT EDGE OF OPENING
AND DIRECTLY OVER THE STEPS

FRAME AND GRATE OR
RING AND COVER

MAX. DESIGN
WSE

1' MIN.

INLET PIPE

OUTLET PIPE

D=18"

36" DIAMETER
ALUMINUM CMP
CENTERED AROUND
OUTLET OPENING,
SEE DETAIL

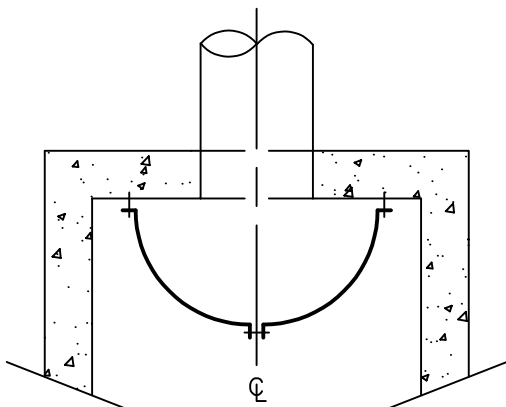
9/16" HOLES FOR
1/2" ANCHORS

3/16"x3" ALUMINUM
FLAT BAR FULLY WELDED
WELDED TO HALF ROUND

T-SECTION

54" MIN.

HALF ROUND DETAIL PLAN VIEW



NOTES:

1. ALL METAL PARTS AND SURFACES MUST BE CORROSION RESISTANT. STEEL HARDWARE SHALL BE GALVANIZED. PIPES SHALL BE GALVANIZED, ASPHALT COATED (TREATMENT 1) OR ALUMINIZED. COMPLETE CORROSION PROTECTION MUST BE ASSURED.
2. APPLY NON-SHRINK GROUT TO INSIDE AND OUTSIDE OF JOINTS, RINGS, RISERS AND FRAMES.
3. TYPE 3 SC SEPARATOR CAN BE USED AS AN ALTERNATE TO STANDARD DETAIL D-43 SC SEPARATOR TYPE 2 WHEN A TYPE 2 WILL NOT WORK DUE TO EXISTING CONSTRAINTS.
3. FASTEN HALF ROUND TO CATCH BASIN WALL QUICK BOLTS.



City of
Bellevue

STORM AND SURFACE
WATER UTILITY

TITLE

SPILL CONTROL (SC) SEPARATOR
TYPE 3