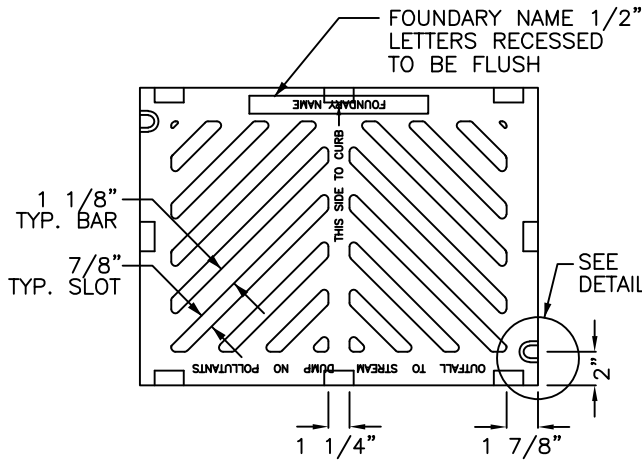
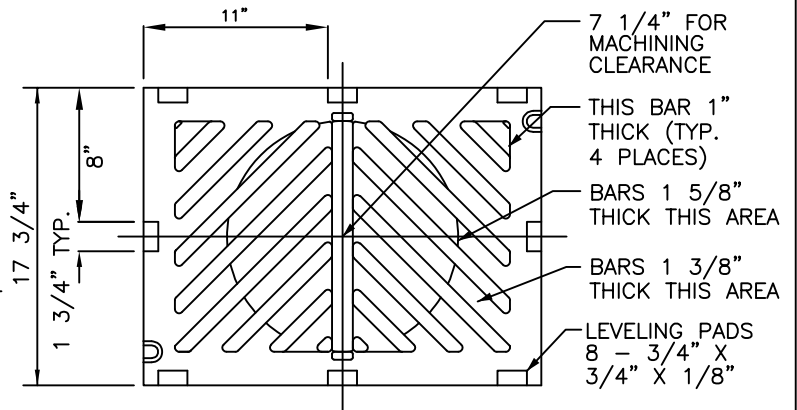


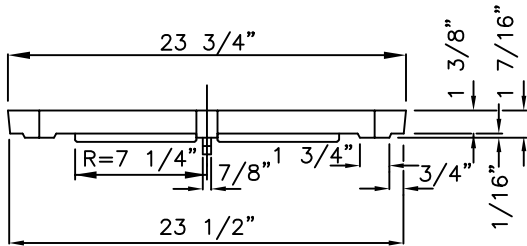
TOP VIEW



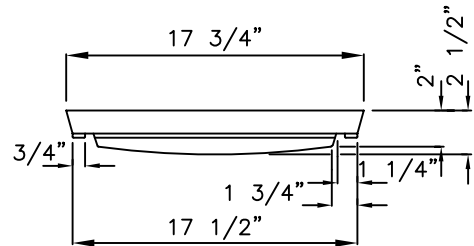
BOTTOM VIEW



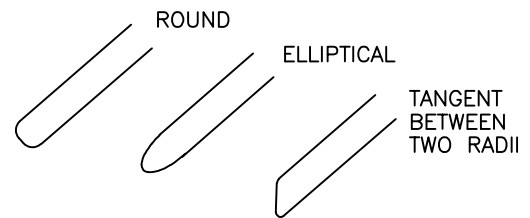
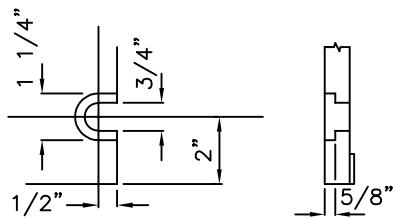
SIDE VIEW



END VIEW



SLOT DETAIL
SEE NOTE 1



OPTIONAL DESIGN FOR
GRATE OPENINGS ENDS

NOTES:

1. SLOT FORMED AND RECESSED FOR 5/8"–11 NC X 2 SOCKET HEAD (ALLEN HEAD) BOLT.
2. GRATE SHALL BE DUCTILE IRON.
3. SHALL CONFORM TO SEC. 9–05.15 OF THE STANDARD SPECIFICATIONS.
4. USE VANED GRATE IN CURB LINE.
5. USE FRAME SHOWN IN STANDARD DETAIL.



City of
Bellevue

STORM AND SURFACE
WATER UTILITY

TITLE

PARKING LOT/AREA
GRATE