



Tree Giveaway Webinar

City of Bellevue ~ Community Development



Trees in Bellevue



Tree City USA

- Since 1990
- Growth Award for the last 28 years!





Environmental Stewardship Plan

- Achieve 40% canopy by 2050
- More than 70% of tree planting area is on private property

N.1.2. Tree planting. Develop a program to incentivize residents and large property owners to plant the right tree in the right place and sustain existing trees, with reduced cost or free trees.





6

Meeting our Goals

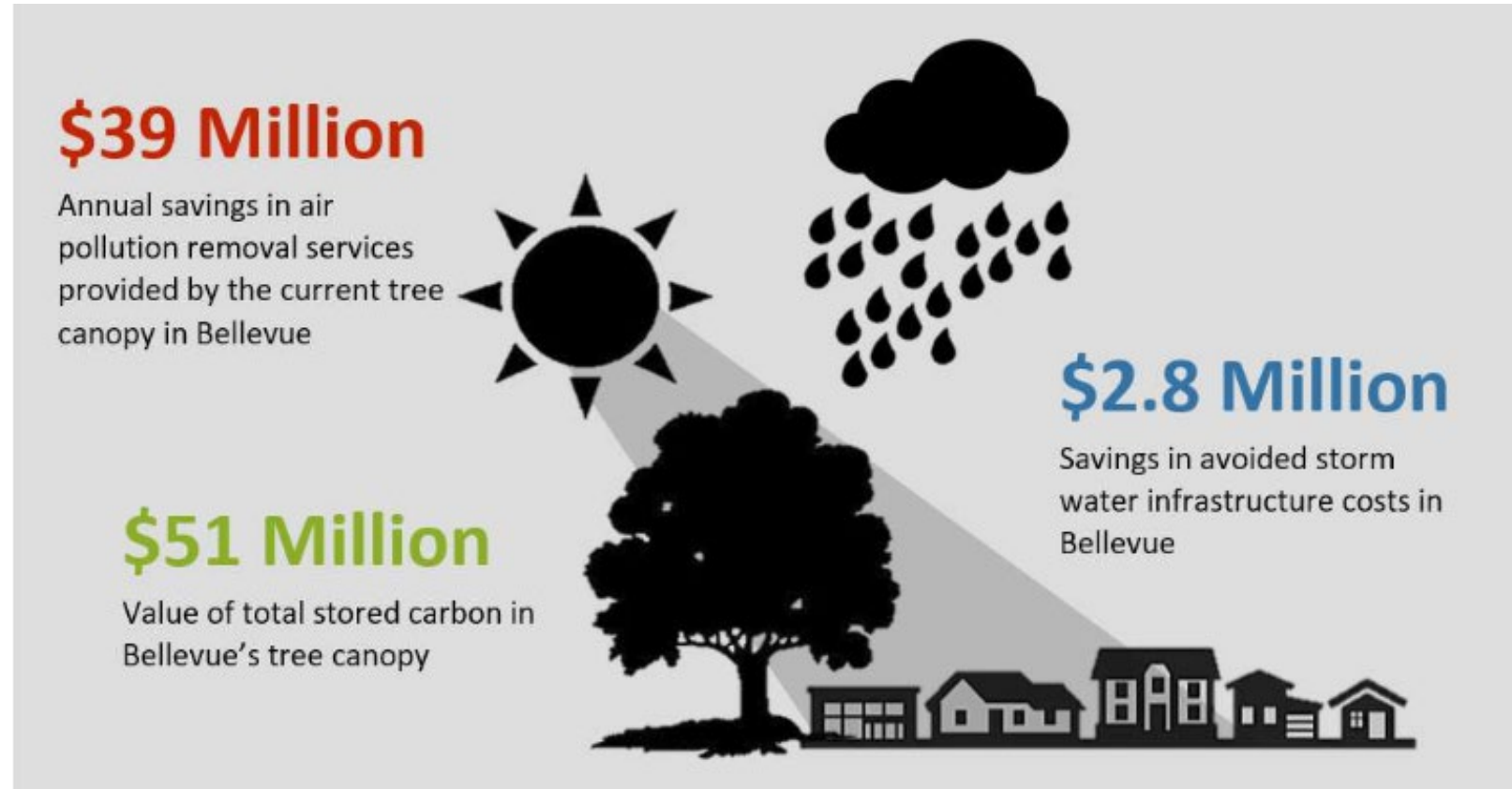
- Plant (estimated) 75,000 trees by 2050
- OR
- Every household plants a tree
- AND
- Protect existing trees





7 Why Trees?

- Sequester carbon
- Clean air and water
- Improve physical and mental health
- Cool the city



Volunteer Opportunities

- Returning this fall!
- Eco-Fridays
 - Groups and businesses
- Stewardship Saturdays
 - Individuals, families, community groups



Volunteer Opportunities

- Neighborhood Tree Ambassadors
 - Tree tours and education to community members
 - 40+ hours and a tree tour over one year
- Bellevue Master Naturalists
 - Training on many environmental topics
 - 100 hours of variety of service over 2 years



Tree Giveaway





Tree Giveaway Program

- Yard trees, not street trees
- a variety of trees, small to large
- Residents can receive up to 2 trees
- Businesses and community organizations (up to 20 trees)



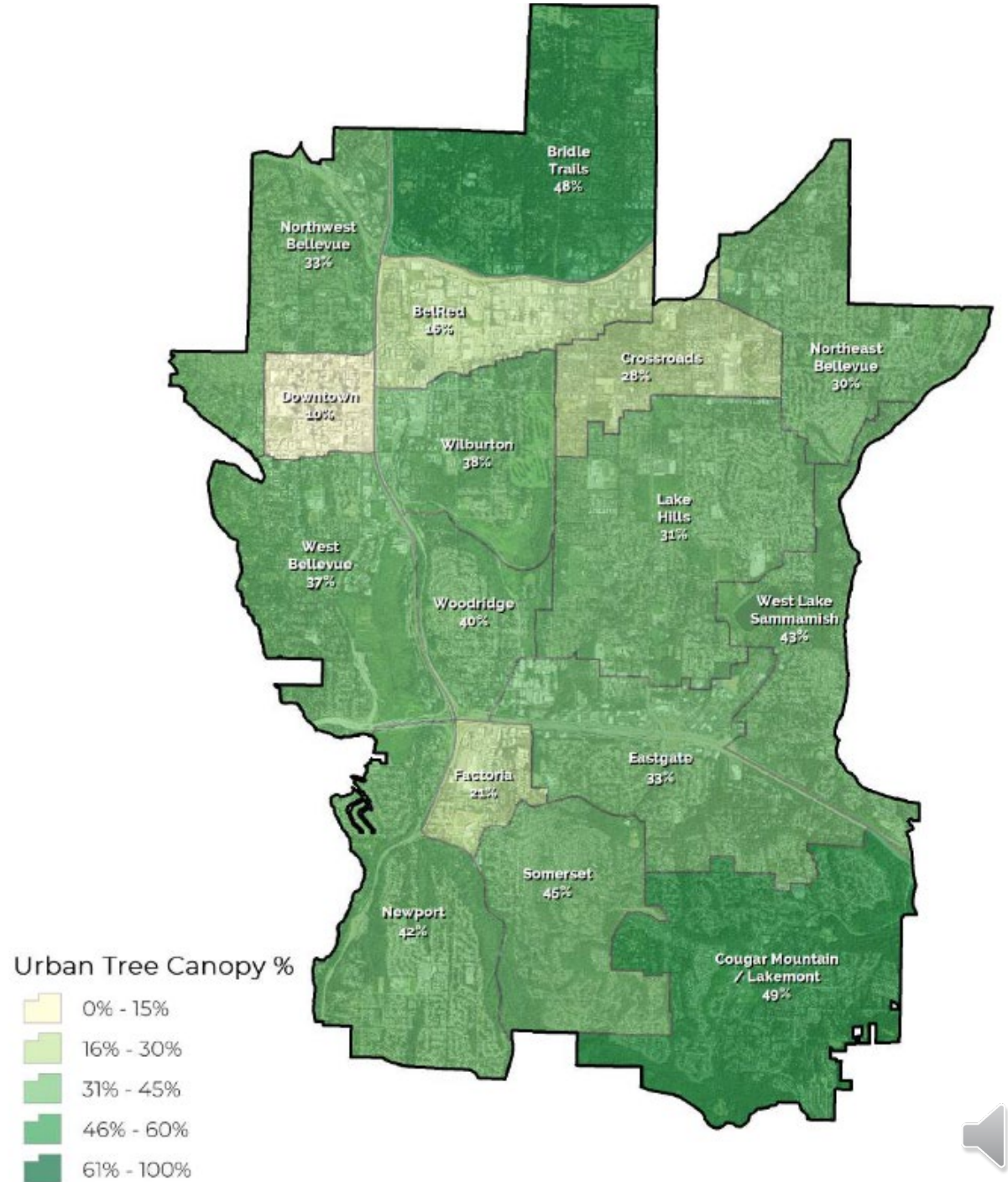
What do you receive?

- Trees
- Information on Tree Care
- (optional) watering bags, mulch, and We Love Our Trees yard sign
- Reminders about watering



Tree Canopy

- Goal: 40% tree canopy by 2050
- Current: 37% average
 - Varies by neighborhood
- Possible planting area (PPA) is mostly on private property
 - Suburban residential land – 61% PPA
 - Urban residential land - 7% PPA





Tree Equity

| Neighborhood | Total Area (Acres) | UTC (Acres) | UTC % | % People of Color |
|----------------------------|-----------------------|----------------|-------|----------------------|
| BelRed | 963 | 148 | 15% | 36% |
| Bridle Trails | 2,022 | 977 | 48% | 42% |
| Cougar Mountain / Lakemont | 2,349 | 1,155 | 49% | 45% |
| Crossroads | 812 | 225 | 28% | 66% |
| Downtown | 432 | 45 | 10% | 31% |
| Eastgate | 1,759 | 586 | 33% | 54.9% |
| Factoria | 387 | 83 | 21% | 40% |
| Lake Hills | 2,260 | 689 | 31% | 50% |
| Newport | 1,706 | 720 | 42% | 28% |
| Northeast Bellevue | 1,413 | 427 | 30% | 38.9% |
| Northwest Bellevue | 1,321 | 438 | 33% | 22% |
| Somerset | 1,307 | 584 | 45% | 54.5% |
| West Bellevue | 1,683 | 621 | 37% | 37% |
| West Lake Sammamish | 1,174 | 472 | 40% | 34.4% |
| Wilburton | 1,109 | 416 | 38% | 54.8% |
| Woodridge | 728 | 289 | 40% | 51.5% |
| Totals | 21,425 | 7,875 | 37% | |

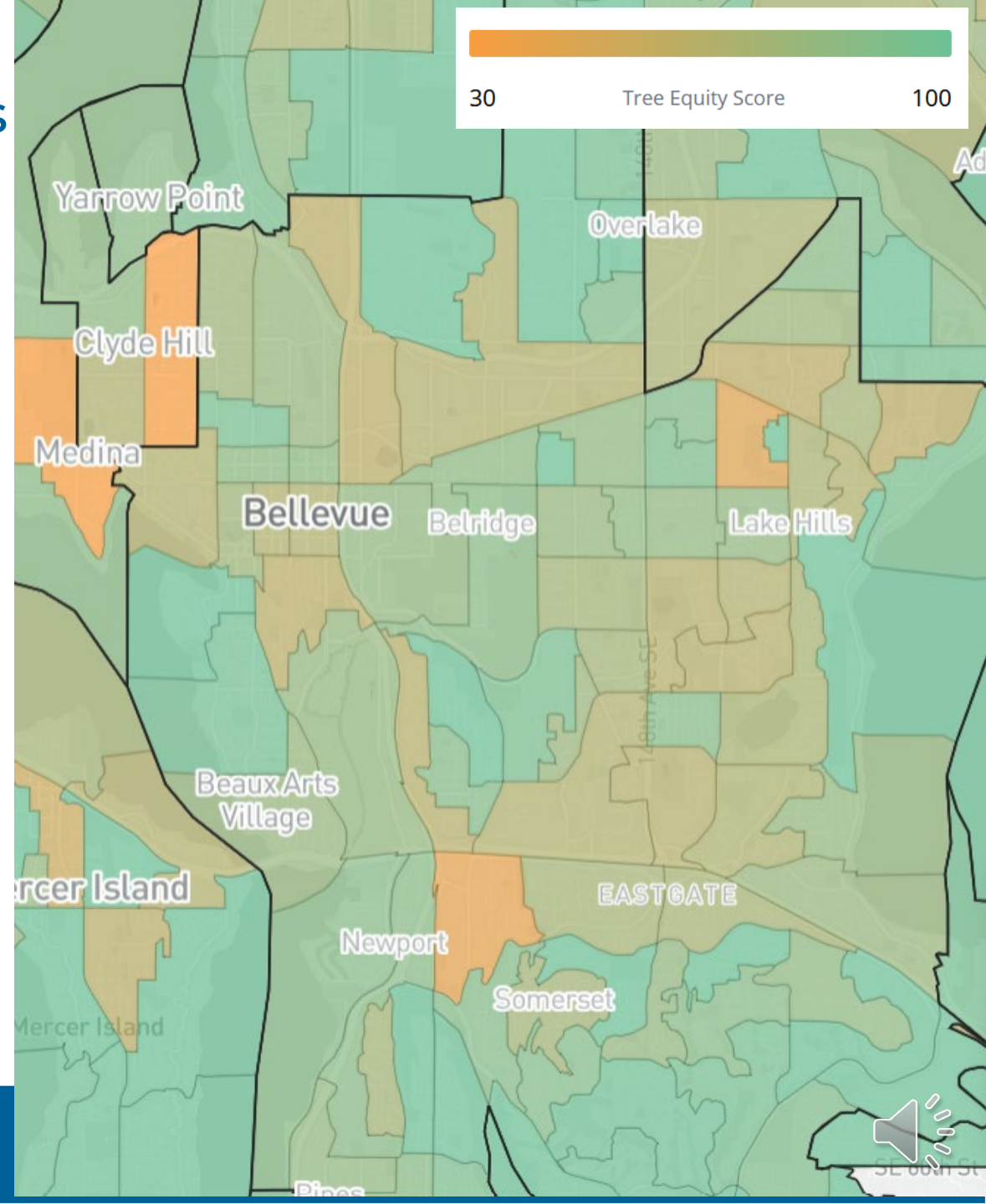
- Trees are not equally distributed
- Neighborhoods with fewer trees usually:
 - Are high in racial diversity
 - Have poorer health outcomes
 - Are hotter (from urban heat island)
 - Less access to parks and open spaces





Tree Equity Score from American Forests

- Each census block group gets a score:
 - Percentage of people below 200% poverty
 - Unemployment rate
 - Percentage of people who are not white
 - Ratio of seniors and kids to working-age adults
 - Urban Heat Island severity
 - Composite index of neighborhood health



Choosing the Right Tree



How Trees Grow

- Shoots, roots, & trunks
- Seek water, nutrients, and sun

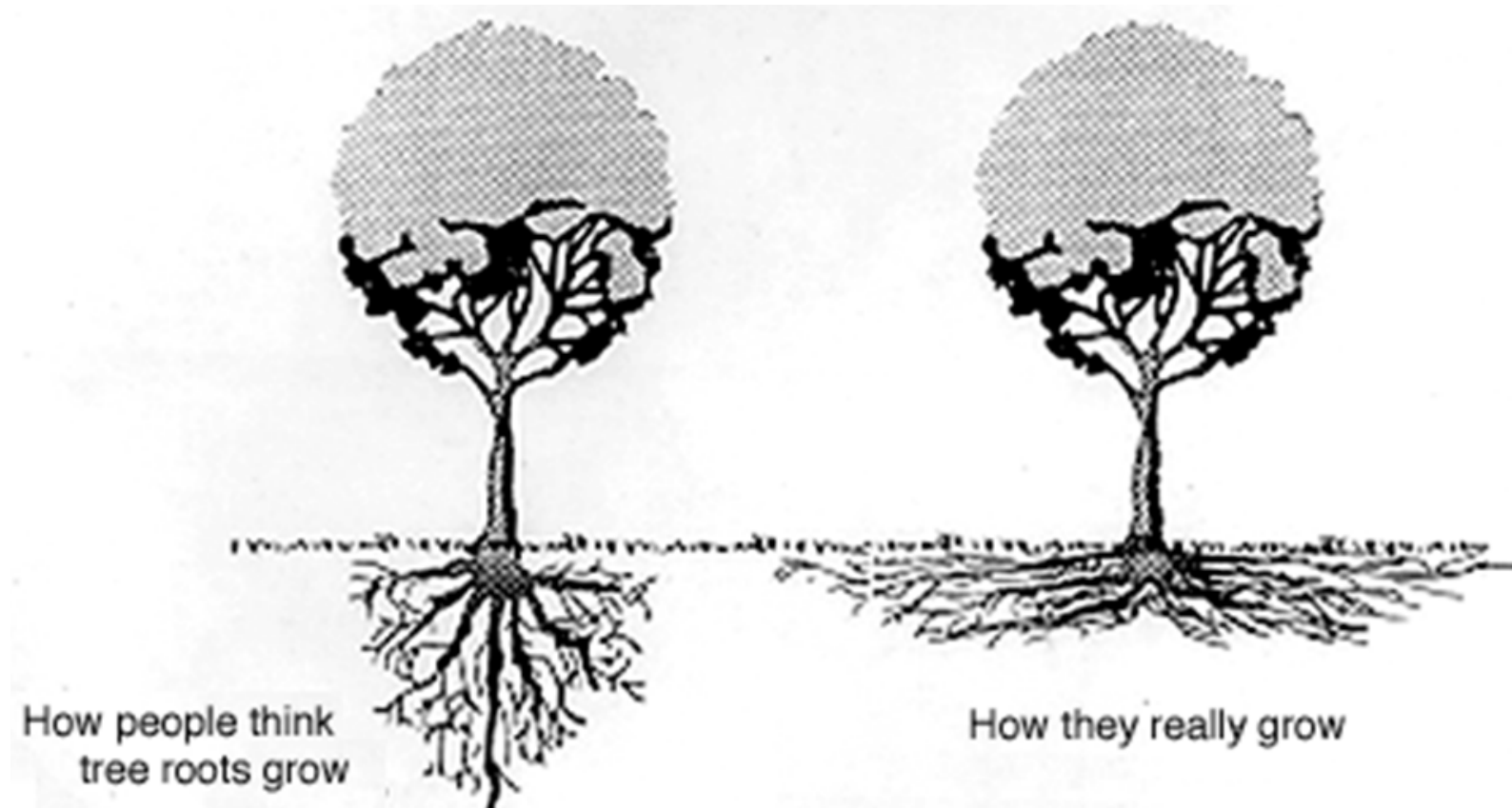


Image: West Lafayette Tree Friends



How did we select trees?

- native and future-native plants
- current and future climate conditions
- ease of maintenance
- disease and insect resistance
- adaptability to a variety of conditions
- easy growing
- Appearance
- regional availability
- low likelihood of limb failure





| Tree Types | Tree Species |
|-------------------------------|---|
| Small fruiting (>20') | Persimmon, Methley plum |
| Small flowering, deciduous | Sweetbay magnolia (30'), Pacific dogwood (20'), handkerchief tree (40') |
| Medium to large deciduous | Oregon oak (80'), black tupelo (50') |
| Medium evergreen | Southern magnolia (60'), Excelsa redcedar (40') |
| Large evergreen | Incense cedar (50-100'), ponderosa pine (50-100') |





Considerations

- Why are you planting this tree?
- What are your conditions?
- What are your preferences?



Why do you want to plant a tree?

- Aesthetics or beauty
- Cool your neighborhood
- Food
- Ensure canopy for the future
- Privacy
- Memorialize a birth, death, or other event

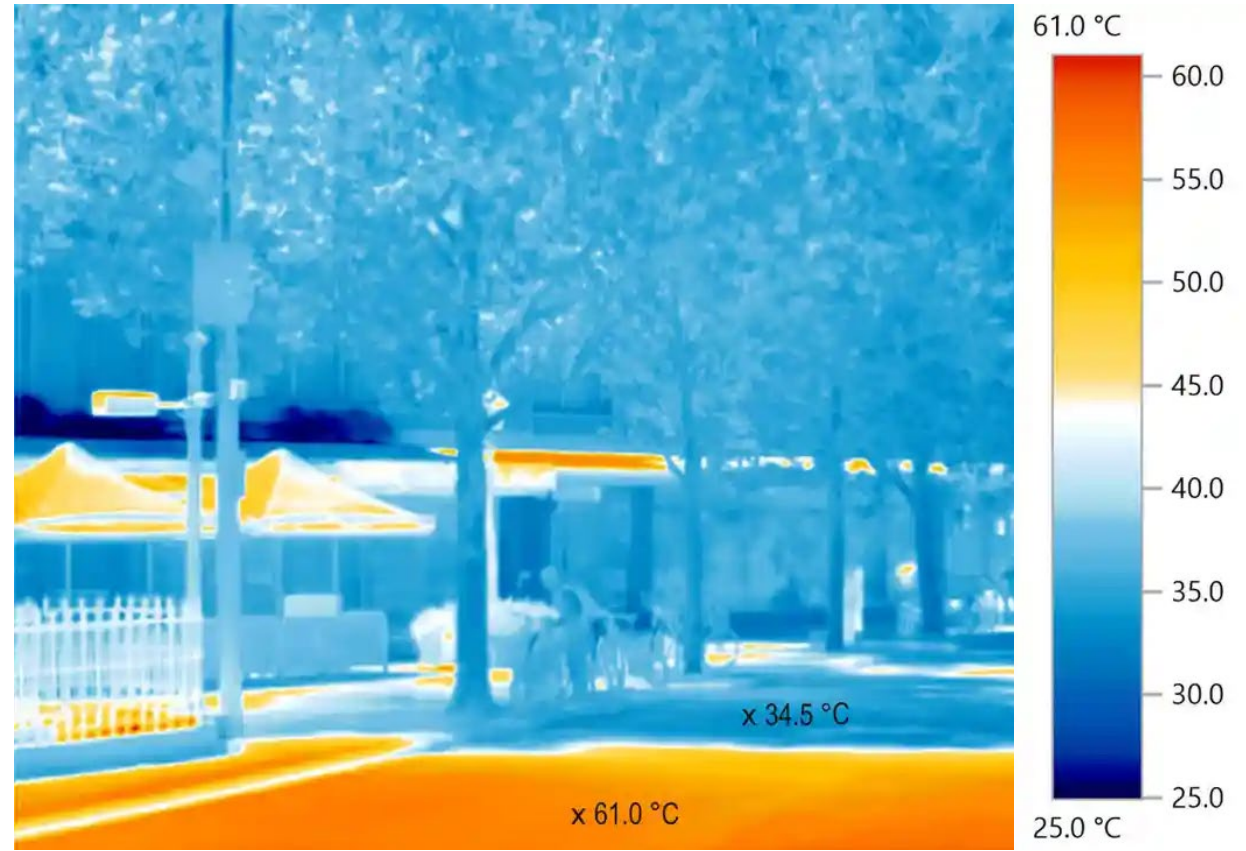


Image Source: City of Melbourne, 2017



Privacy Screen



Emerald Green Arborvitae (*Thuja occidentalis* 'Emerald Green')
Images: [DEA/RANDOM](#)/De Agostini Picture Library/Getty
Images

Native Plants



Pacific Dogwood (*Cornus* 'Eddie's White Wonder')
Images: Michael Russel

Energy Bill Savings

Well-placed trees help save up to 30%

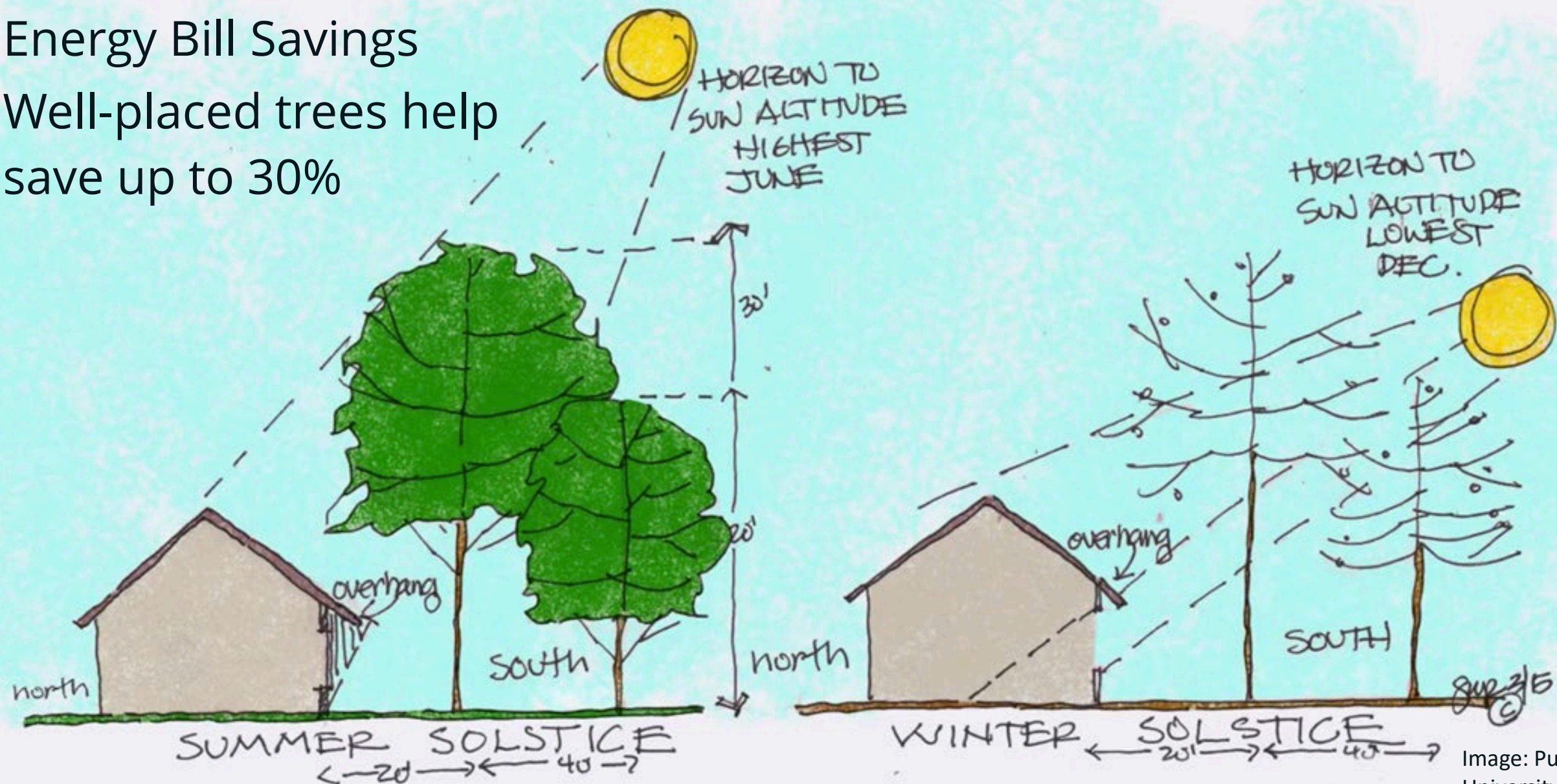


Image: Purdue University





What are your Conditions?

- Soil: Sand, loam, clay
- Light: sun, shade, a mix
- Space: horizontal, vertical, underground
- Other conditions: wet or dry, on a slope



Conditions: Soil

SAND



Sandy soil does not stick together and water drains quickly
[Image](#)

LOAM



A healthy mix of silt, sand, and clay.
[Image](#)

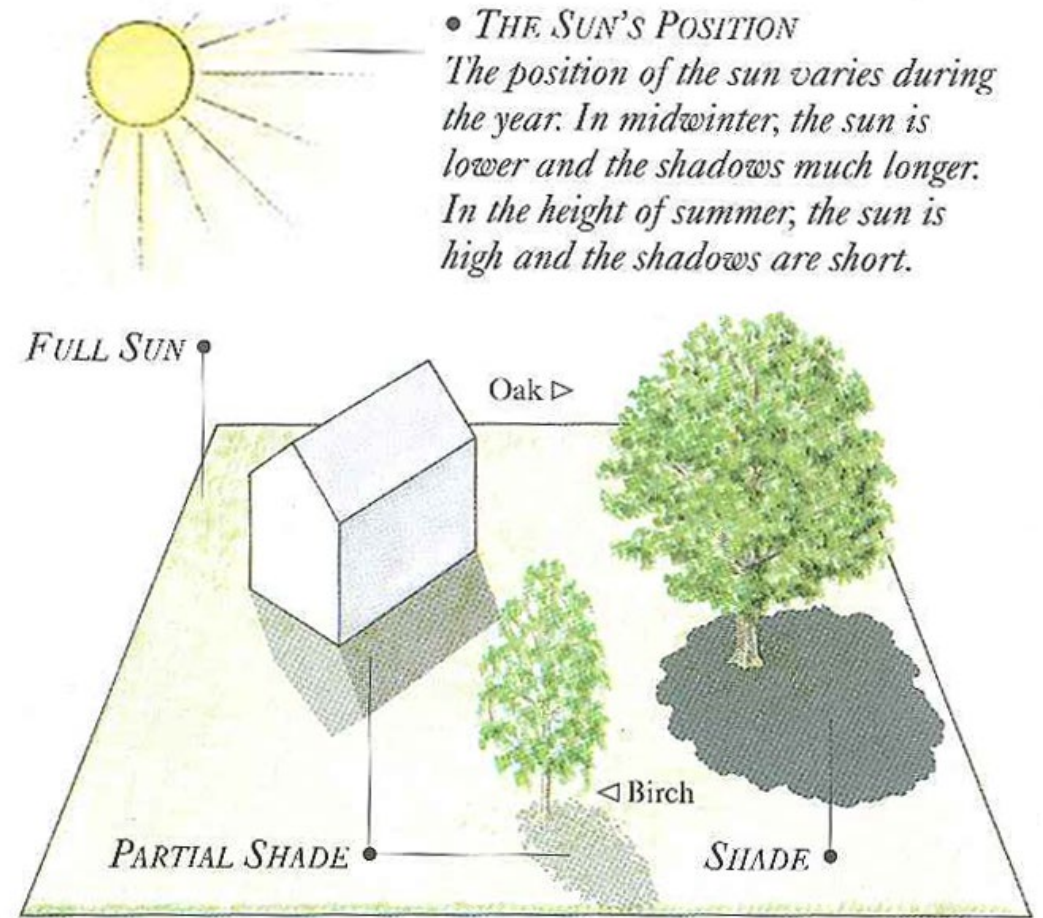
CLAY



Clay soil packs together and water drains very slowly
[Image](#)

Conditions: Light

- Full Sun: 6+ hours per day
- Part Sun/Part Shade: 3-6 hours per day
- Shade: 3 or fewer hours per day



[Image](#): McKay's Nursery Blog

Conditions: Space

- Consider mature tree size (height & width)
- Ensure proper distance from
 - Overhead & underground utilities - call 811 before you dig
 - Nearby structure
 - Roads, sidewalks, and corners
 - Other trees



Wrong Tree Wrong Place



Image: US Sun



Image: Independent Tree Co.

Wrong Tree Wrong Place



Image: The Lawn Starter



Image: The Tree Center



What are your preferences?

- Aesthetic: spring flowers, fall color, fruit, shape
- Future plans: how much shade do you want in your yard?
- Maintenance: fall raking or small tasks, pruning



What are your preferences?



Image: Oregon State Extension



Image: Plantmaster

What are your preferences?



Image: Heartly Botanic
Kew Gardens



Image: Medico1849



Additional Considerations

- HOA or neighborhood association requirements
- Views: consider using trees to frame your view, not block it
- NGPA, Steep Slope, ECA, wetlands and waterways



Image: Shelia Brown



Fruit Trees

- Full sun or your fruit won't ripen
- Trees will produce enough for a household with one tree, but will produce more with two trees
- Pruning needs of fruit trees are very different than other trees
- Need more water to produce healthy, juicy fruit



Image: Northern Ridge Nursery



Basic Tree Care

- Learn to properly plant a tree by watching our video
- Water
- Fertilizer
- Pruning

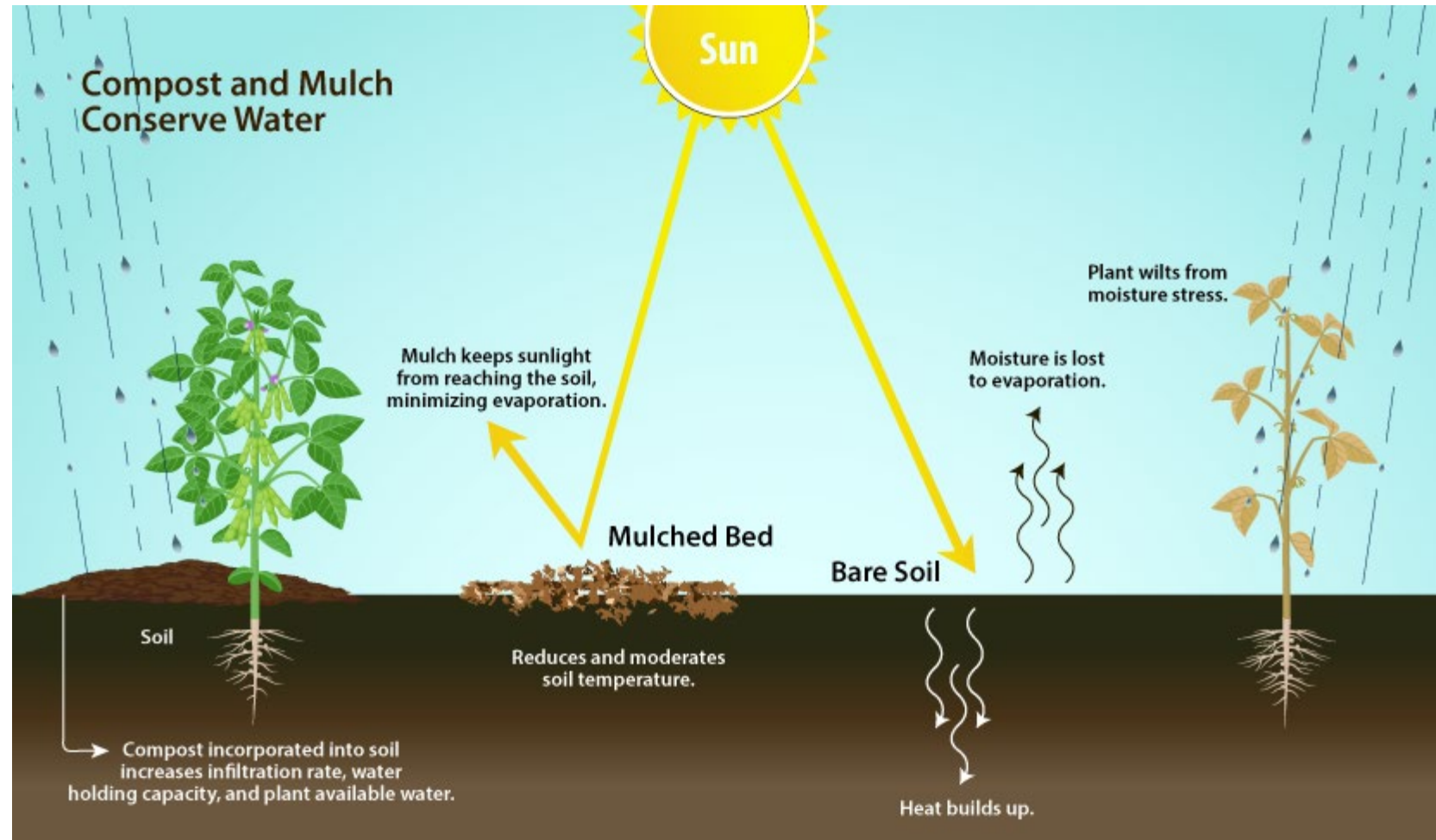


Image: CalRecycle



How to Prune Trees

- If you want to learn to prune yourself:
 - City of Bellevue guide
 - PlantAmnesty
 - Has video guides for many types of tree (including fruit trees!) in English and Spanish
- ISA Certified Arborists
 - We recommend hiring tree companies or individuals with this certification and expertise

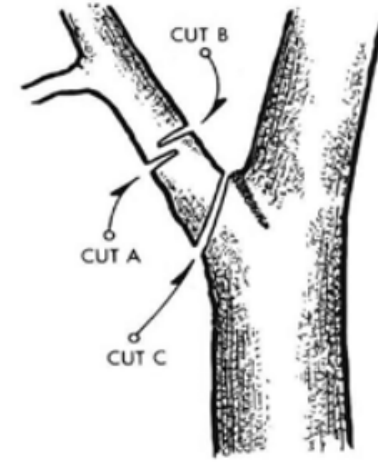


Figure 16. Three-Step Pruning Cut

Left: City of Bellevue Pruning Guide

Bottom: Incorrectly pruned shrubs via PlantAmnesty





When to Call a Professional Arborist

- When pruning if:
 - You need a ladder or to climb
 - A branch is more than 3"
- Or if:
 - You notice new mushrooms, holes, or creaking
 - Newly moved in or don't know when the last assessment was
 - A large tree needs pruning or overhangs a building



Resources





Resources

Ask a [King County Master Gardener](#) or expert at the [Oregon State University Extension Service](#)

For reliable plant information in PNW: [Great Plant Picks](#)

Find an arborist through [PNW ISA](#) or [Trees are Good](#) arborist directories or get a referral from PlantAmnesty

[PlantAmnesty](#): service referrals, pruning guidance videos (English and Spanish), pruning assistance





City Resources

For tree care resources for the City of Bellevue and tree giveaway updates: www.BellevueWA.gov/Trees

If you might live in a critical area Development Services: 425-452-6800 or permits@BellevueWA.gov

Parks department volunteer opportunities can be found under "[Environmental Stewardship Volunteer Opportunities](#)"

Call or email me with your questions. trees@BellevueWA.gov or 425-452-7241





Fruit Tree Resources

[City Fruit](#) – help with pruning and care resources

Western Cascade Fruit Society: wcfs.org

Northwest Washington Fruit Research Foundation: www.nwfruit.org

Cloud Mountain Farm Center – [Growing Tips](#)



Thank you to our Partners & Sponsors

- King Conservation District (KCD)
- City of Bellevue Parks & Community Services
- 300 Trees
- ECOSS



Questions?

