

Neighborhood Enhancement Program



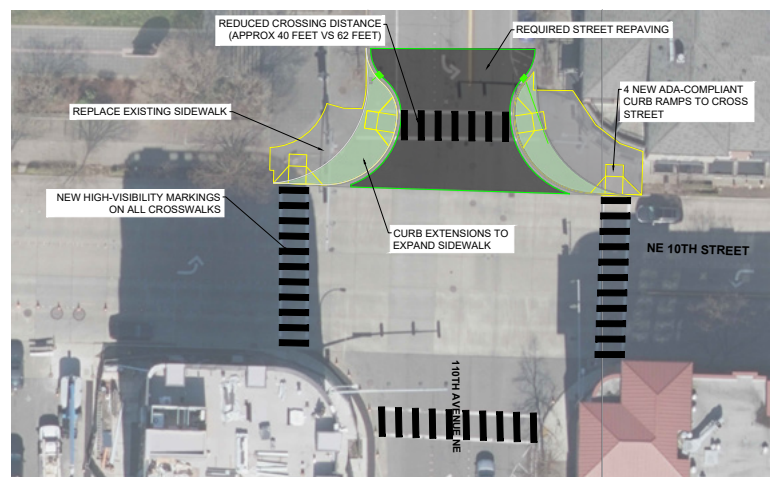
DT-1: NE 10th Street and 110th Avenue NE Curb Extensions

Cost: \$780,000

Location: Intersection of NE 10th St and 110th Avenue NE



Description: This project would install curb extensions on the northwest and northeast corners of the NE 10th Street and 110th Avenue NE intersection to reduce the crossing distance for people walking, including to and from Downtown Library and Ashwood Park. This project would improve the visibility of people crossing the street and reduce the crossing distance to approximately 40 feet, compared to 62 feet today. The curb extensions would not remove any on-street parking spaces or vehicle lanes. This project would also include larger sidewalk corners, four new ADA curb ramps, and new high-visibility crosswalk markings on all crossings at this intersection.



For alternate formats, interpreters, or reasonable modification requests please phone at least 48 hours in advance 425-452-2735 (voice) or email disaak@bellevuewa.gov. For complaints regarding modifications, contact the City of Bellevue ADA, Title VI, and Equal Opportunity Officer at ADATitleVI@bellevuewa.gov.

Neighborhood Enhancement Program



DT-2: LED Lighting upgrades near Bellevue Downtown Library

Cost: \$50,000

Location: 108th Ave NE from NE 10th-NE 12th St, 110th Ave NE from NE 10th-NE 12th, NE 10th St from 108th Ave NE-110th Ave NE



Description: This project would upgrade up to 15 existing city owned street lights to LED within the street limits detailed. The City of Bellevue lighting engineer would determine exact street light specifications based on available right-of-way, available power, and relation to underground utilities. Proposed quantity and street light locations are estimated.



For alternate formats, interpreters, or reasonable modification requests please phone at least 48 hours in advance 425-452-2735 (voice) or email disaak@bellevuewa.gov. For complaints regarding modifications, contact the City of Bellevue ADA, Title VI, and Equal Opportunity Officer at ADATitleVI@bellevuewa.gov.

Neighborhood Enhancement Program



DT-3: Landscape Enhancement on 'The Corners'

Cost: \$335,000

Location: City parcels on the corners of 110th Ave NE and NE 2nd Pl



Description: This project would include the addition of trees and enhancement of the landscaping on three (3) City parcels at this downtown intersection. Work would include removal of declining or dead trees and shrubs, enhanced contouring of the landscaped borders along the sidewalks, installation of infrastructure for pedestrian safety, upgrade and expansion of irrigation systems, and installation of new plants and trees.



For alternate formats, interpreters, or reasonable modification requests please phone at least 48 hours in advance 425-452-2735 (voice) or email disaak@bellevuewa.gov. For complaints regarding modifications, contact the City of Bellevue ADA, Title VI, and Equal Opportunity Officer at ADATitleVI@bellevuewa.gov.

CDD-26-78473b

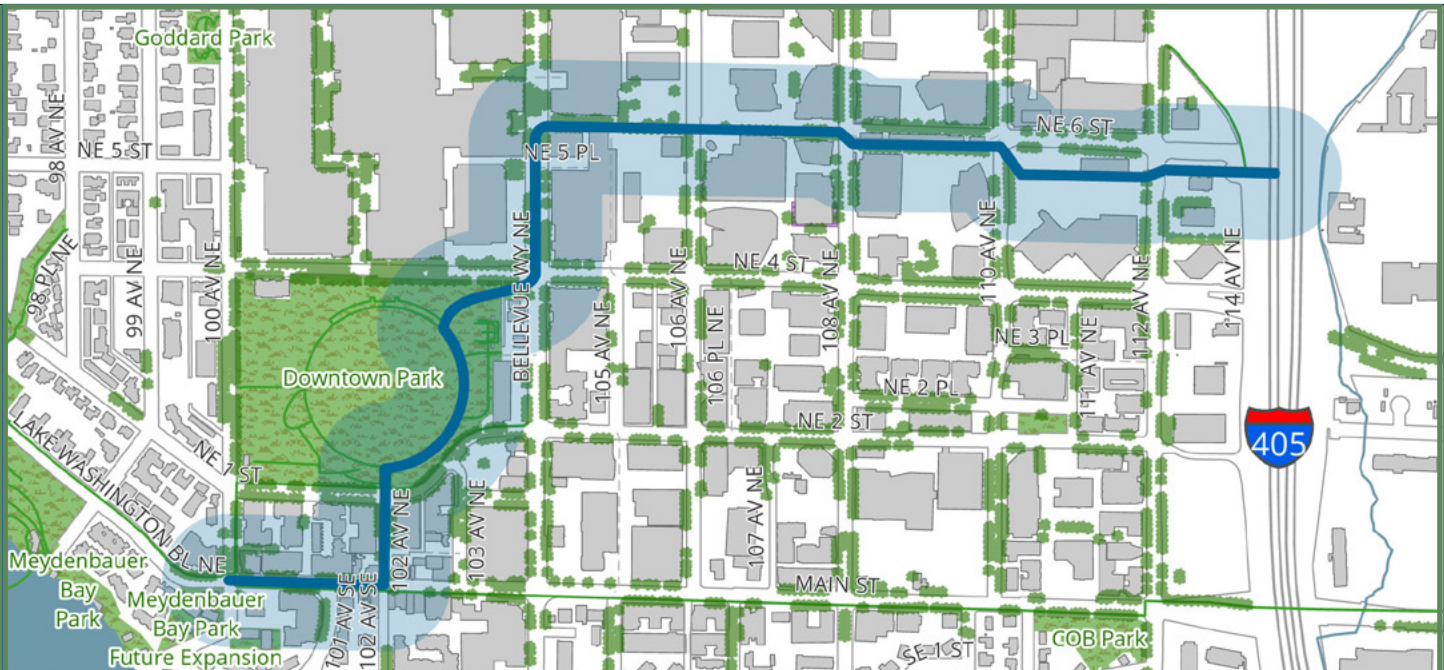
Neighborhood Enhancement Program



DT-4: Utility Box Wraps

Cost: \$50,000

Location: Grand Connection Pathway



Description:

This project would wrap 5-8 utility boxes located at signalized intersections along the Grand Connection in Downtown Bellevue with art. An artist, an artist team, or multiple artists would design artworks that give the pathway a cohesive feel.



For alternate formats, interpreters, or reasonable modification requests please phone at least 48 hours in advance 425-452-2735 (voice) or email disaak@bellevuewa.gov. For complaints regarding modifications, contact the City of Bellevue ADA, Title VI, and Equal Opportunity Officer at ADATitleVI@bellevuewa.gov.

Neighborhood Enhancement Program



DT-5: NE 10th St Landscape Enhancements

Cost: \$190,000

Location:

Streetscape beds on NE 10th St, between 108th Ave NE and 112th Ave NE



Description: This project would include the enhancement of the landscaping in the crosswalk median and curbside planter beds, on both sides of the road. Work would include removal of high-maintenance and declining shrubs, upgrades to the existing irrigation systems, restoration of bare planter areas, installation of low maintenance and drought tolerant plants, and a mulch top dress.



For alternate formats, interpreters, or reasonable modification requests please phone at least 48 hours in advance 425-452-2735 (voice) or email disaak@bellevuewa.gov. For complaints regarding modifications, contact the City of Bellevue ADA, Title VI, and Equal Opportunity Officer at ADATitleVI@bellevuewa.gov.

CDD-26-78473b

Neighborhood Enhancement Program



DT-6: 100th Avenue NE Traffic Calming (Speed Cushions)

Cost: \$100,000

Location: Goff Creek at NE 24th St between 130th Pl NE and 131st Pl NE



Description: This project would provide two rows of speed cushions along 100th Avenue NE between NE 1st Street and NE 4th Street to slow down the speed of people driving. Speed cushions are two or more raised and rounded areas of pavement placed laterally across a road. They have gaps to allow emergency vehicles and cyclists to pass more quickly without needing to drive over the cushions. Non-emergency vehicles are generally too narrow to travel through the gaps and must drive over the bump. Typically, multiple speed cushions are installed along a road to maximize effectiveness.



For alternate formats, interpreters, or reasonable modification requests please phone at least 48 hours in advance 425-452-2735 (voice) or email disaak@bellevuewa.gov. For complaints regarding modifications, contact the City of Bellevue ADA, Title VI, and Equal Opportunity Officer at ADATitleVI@bellevuewa.gov.

Neighborhood Enhancement Program



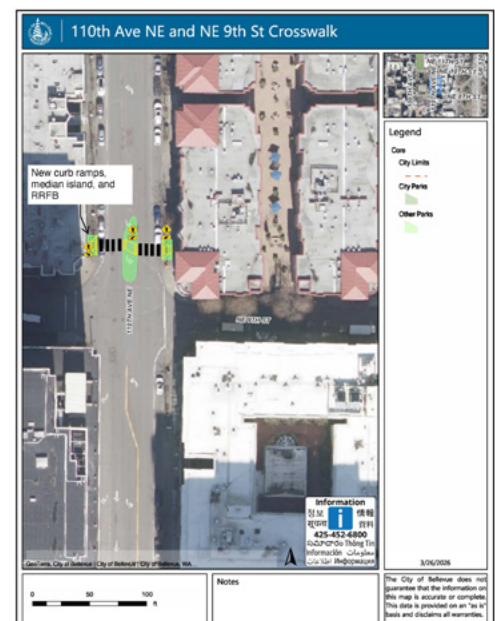
DT-7: New Pedestrian Flashing Crossing at 110th Ave NE North of NE 9th St

Cost: \$950,000

Location: 110th Ave NE, North of NE 9th St



Description: This project would install a new pedestrian-activated flashing system on the north leg at 110th Ave NE north of NE 9th St. Flashing beacons would be added on each side of the street and continental crosswalk marking would be added to the north leg. This project includes a median refuge island, associated street lighting upgrades, curb ramps, and signage upgrades if warranted.



For alternate formats, interpreters, or reasonable modification requests please phone at least 48 hours in advance 425-452-2735 (voice) or email disaak@bellevuewa.gov. For complaints regarding modifications, contact the City of Bellevue ADA, Title VI, and Equal Opportunity Officer at ADATitleVI@bellevuewa.gov.