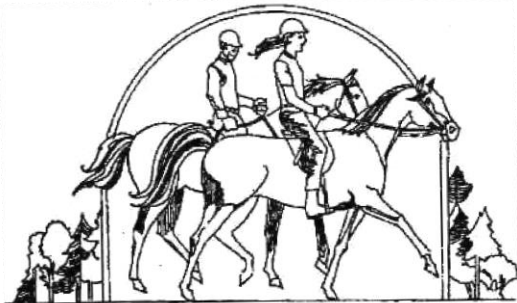


Neighborhood Park Development **Bridle Trails**

**140th Avenue NE Park
(Ginzburg Acquisition)**



Park Board Meeting
May 10, 2016



Agenda

- Project Introduction/Review
- 4432 140th Ave NE (Ginzburg acquisition) Site
- Site Information, Opportunities & Challenges
- Timeline and Work Complete
- Site Photos
- Survey Results
- Proposed Park Program & Concept Design
- Preferred Design
- Comments Q&A

Parks & Natural Areas Levy

Neighborhood Park Development (\$5M) (2.5M for Bridle Trails Area)

Smaller-scale parks will be developed with amenities such as play equipment, open space, and trail connections. Proposed sites are along Lake Sammamish and in the Bridle Trail neighborhoods.

Proposition 1
City of Bellevue
Parks & Natural Areas Levy
November 4, 2008 Voter Initiative

Background
With the city's existing parks levy expiring this year, voters are being asked to consider a new funding measure to provide additional investments in Bellevue's nationally accredited park system. The measure would replace the purchasing power of the expiring bond. Following significant public input, Bellevue City Council approved the measure for the November 4 ballot.

The Parks & Natural Areas Levy
This measure includes funding to enhance and maintain the Bellevue Parks & Open Space System. If approved, the package would accomplish the following:

- Protect water quality in Bellevue's lakes and streams and preserve natural areas throughout the city.
- Enhance existing parks such as Bellevue Downtown Park, Surrey Downs, Crossroads Community Park and Bellevue Botanical Garden;
- Invest in sportsfields, trails, community parks, and neighborhood parks; and
- Maintain improvements consistent with Bellevue Parks' standards.

Specific project funding details are further described below:

Acquisition Opportunity Funding (\$10M)
Dedicate resources to obtain land that complements the existing parks system to increase public access to lake shores, preserve open space, protect water quality, increase trail connectivity and create opportunities for new neighborhood parks.

Eastgate Area Community Park (\$6M)
This 27-acre undeveloped site will be improved following a community-based plan to preserve natural areas and add new recreational amenities.

Neighborhood Park Development (\$5M)
Smaller-scale parks will be developed with amenities such as play equipment, open space, and trail connections. Proposed sites are along Lake Sammamish and in the Bridle Trails neighborhoods.

Downtown Park (\$5M)
Complete additional phase of the Downtown Park master plan, including completion of the circle around the waterfall and reflecting pond.

Surrey Downs Community Park (\$3.5M)
Transferred to the City from county ownership in 2005, this park will be improved to offer new sport and recreational amenities for the neighborhood and broader community.

Sports Field Improvements (\$3M)
Building on the expanded capacity of Robersonwood Sports Fields, additional synthetic fields will be installed to improve safety and play at Wilburton Hill and Newport Hills parks.

Bellevue Botanical Garden (\$2M)
Planned improvements will expand opportunities for visitors to experience botanical displays and educational programs.

Expansion of Crossroads Community Center to Support Youth Performing Arts (\$2M)
A larger, improved facility will help meet the facility needs of the City's youth performing arts programs.

Lewis Creek Park Phase II (\$2.2M)
Group picnic areas and more trail connections will complete the planned improvements to this community park.

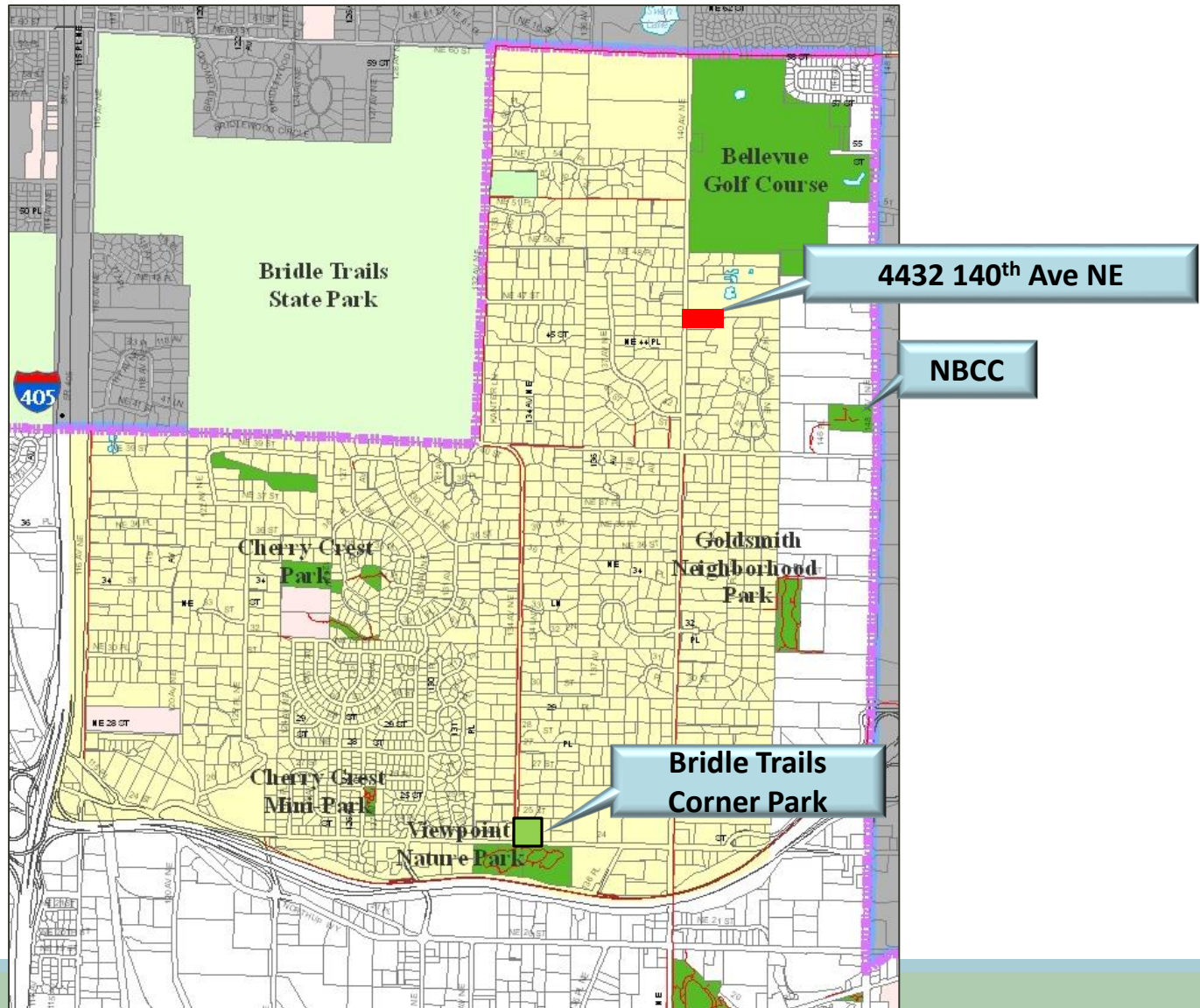
Trail and Natural Area Improvements (\$2M)
Investments within the City's 1,800-acre open space system will improve forest conditions, and stabilize slopes to reduce erosion in the Coal Creek Natural Area, and create hiking and walking trails throughout the City.

Cost
If approved, this measure would cost a typical homeowner about \$71 per year for the next 20 years, or 12 cents per \$1,000 of assessed value. This measure was set to replace the expiring 1988 Bellevue Park Bond which had an average property tax rate of 17 cents per \$1,000 of assessed value.

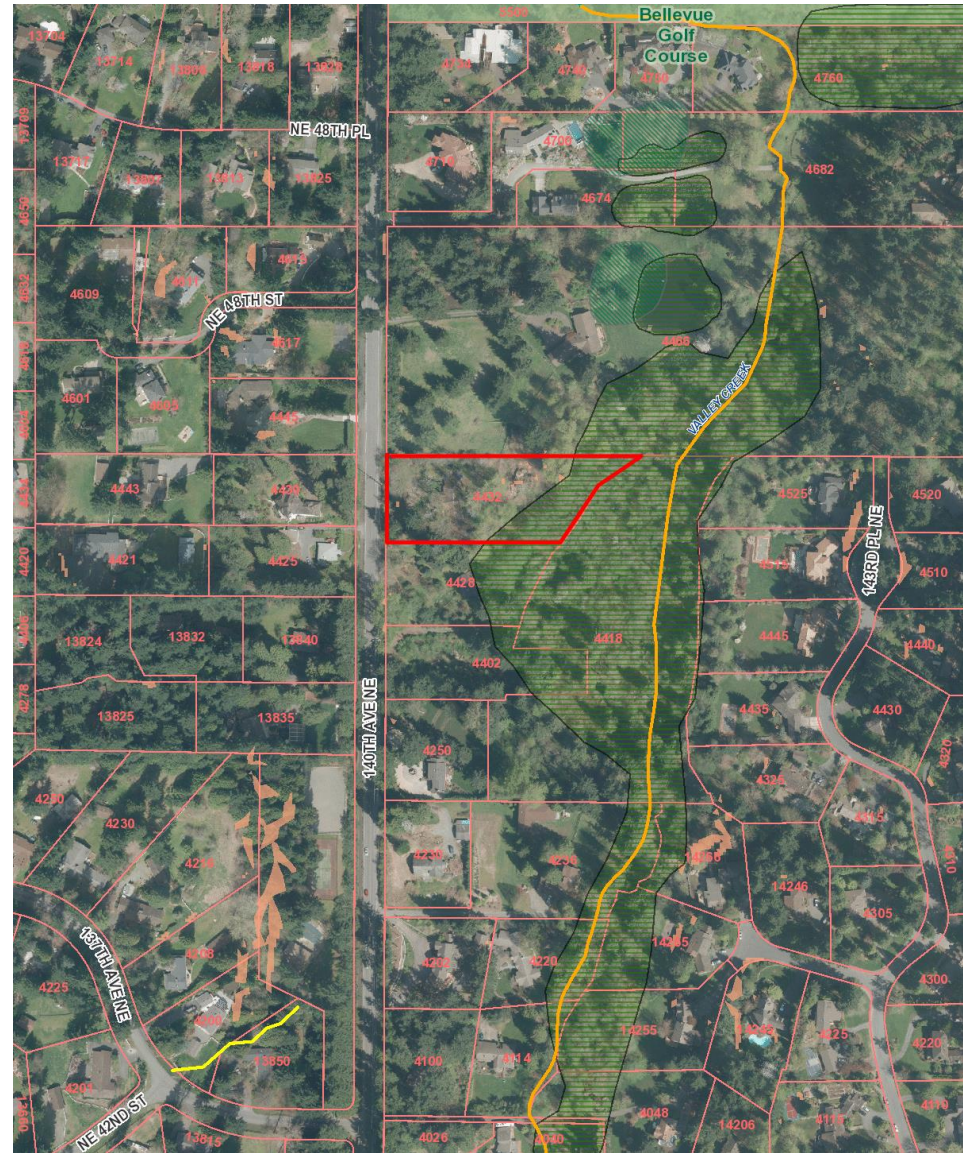
Additional Information
If you have questions about the Bellevue Parks & Natural Areas Levy, please call the Bellevue Parks & Community Services Department at 425-452-2805.

PH0804 Levy 08/08/08.pdf

Bridle Trails Neighborhood



Ginzburg Acquisition Site 4432 140th Ave NE Approx. 1.65 Acres



NE 48TH ST

4617

4445

4439

4425

13840

33NE

4432

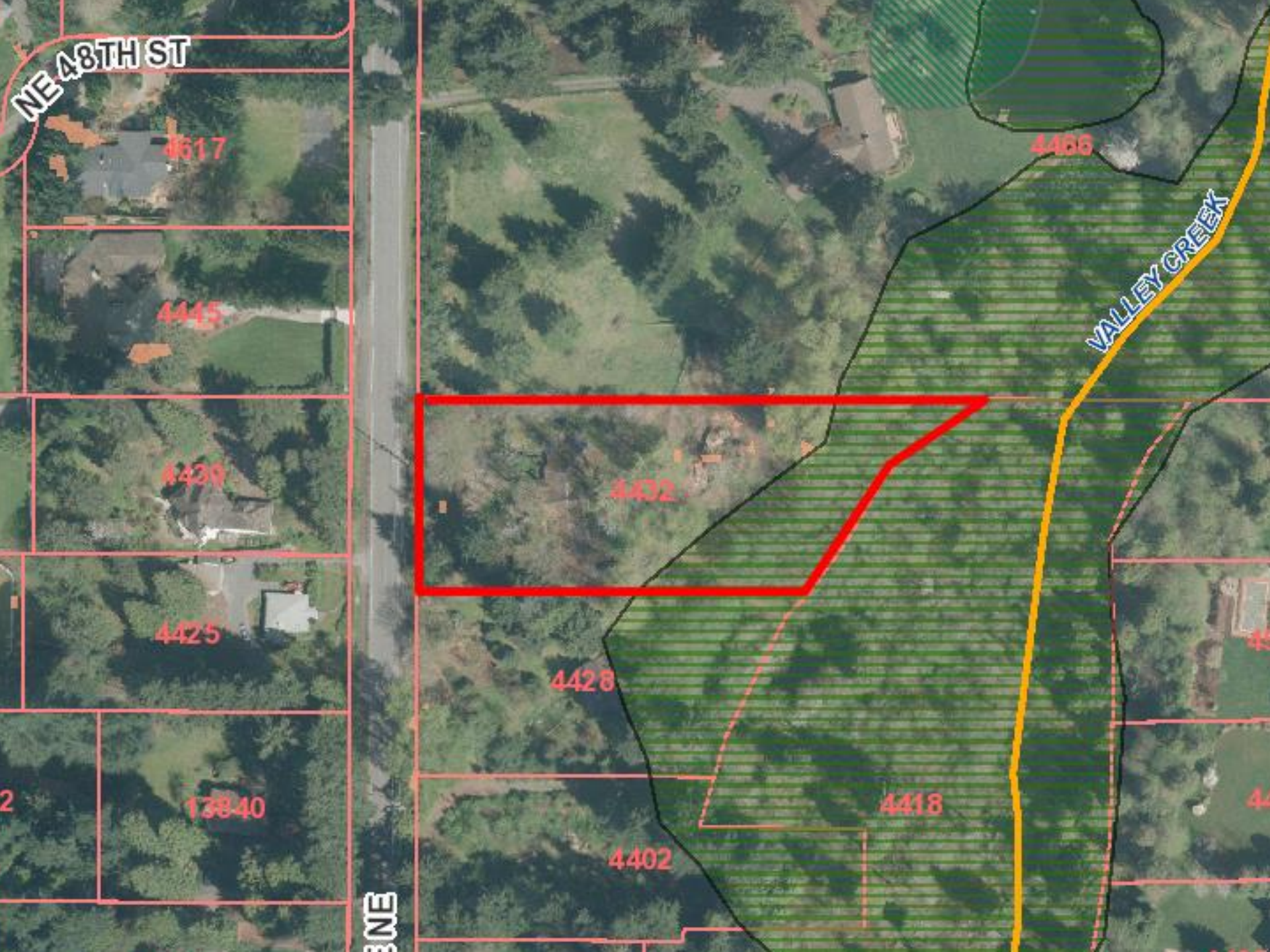
4428

4402

4418

4466

VALLEY CREEK



Project Milestones

- Property acquired by Bellevue CC (Oct 20, 2014)
- Kick-off community meeting- project intro (May 13, 2015)
- On-line survey (May-July 2015)
- House demolition complete (Aug 2015)
- Second community meeting-designs presented (Oct 7, 2015)
- Third Community meeting-preferred plan presented (Feb 10, 2016)
- Bridle Trails Community Club General Meeting (Mar 24, 2016)

**Site looking east
from current
140th Ave
shared entry**



Before demo



After house demo

**Looking east from
proposed park entry**



Before demo



After house demo

**Looking east
toward NGPA
from high point**



On-line Survey & Comments Received Results

Total Respondents 55 (presented 2nd Community Meeting)

Question: What type of improvements would you like to see in the new neighborhood park?

Playground	25
Trails-16 & Nature Viewing and/or Interpretive Elements	10 (26)
Open lawn area for play/non-programmed sports	10
Picnic shelter/covered gathering area	9
& Picnic Table/BBQ/Benches	6 (15)
Sports Court	5
Pedestrian access, improvements /crosswalk	4
Adequate Parking	4
Minimal improvements, no development or leave natural	4
Bathrooms	3
Dog Park	2
Adult activities	2
Bike Riding access	2
Community Garden	1
Did not respond to question	8

Play Areas Ages 2-5, 5-12 & Adventure Play



Open Space, Trails, Amenities Interpretive Elements



Picnic- Gathering Shelter



**Concept
only**

Bridle Trails Neighborhood

4432 140thAve NE (Ginzburg Acquisition)



Concept Plan View - A (2nd Community meeting)

Bridle Trails Neighborhood

4432 140thAve NE (Ginzburg Acquisition)



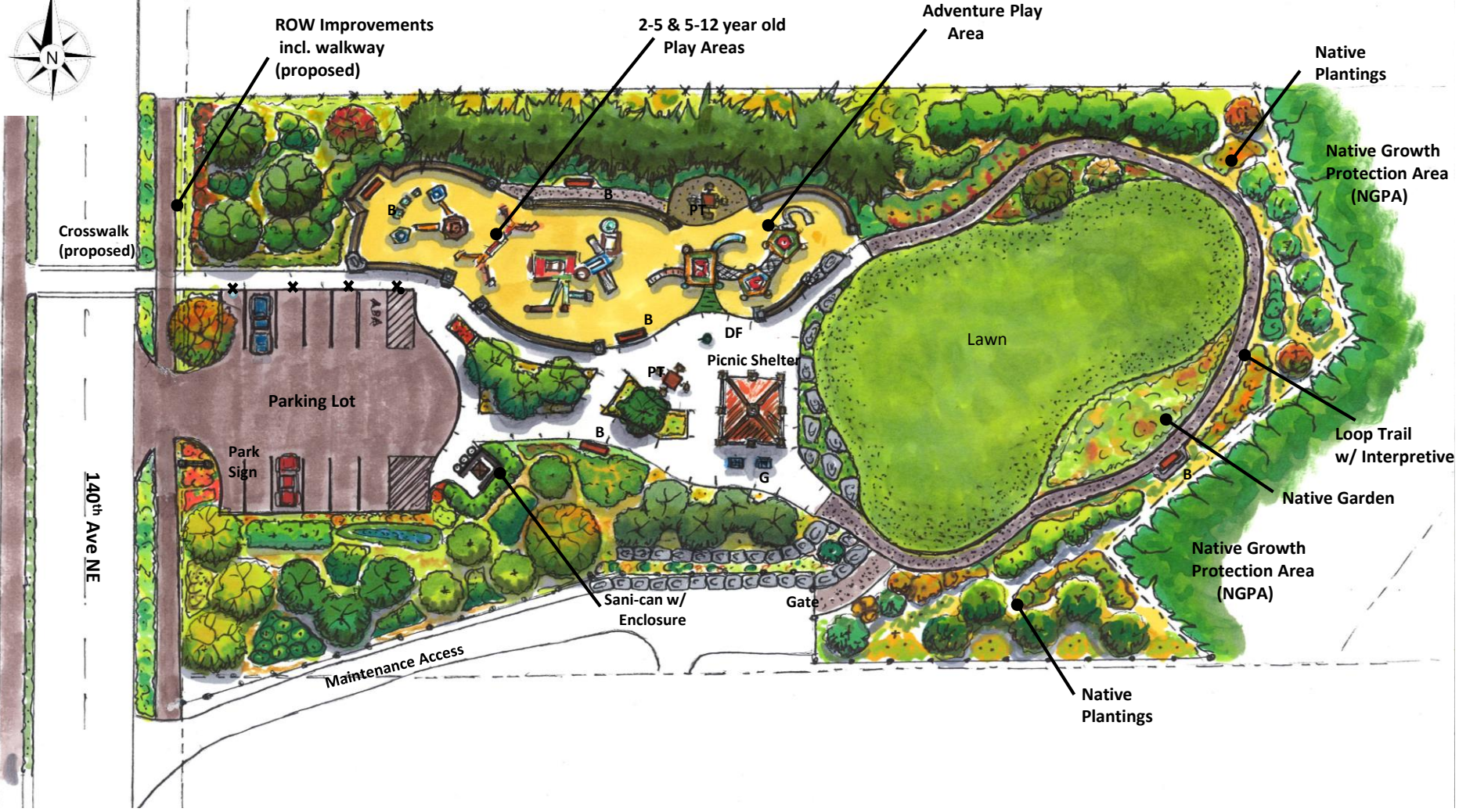
Concept Plan View - B (2nd community meeting)

What we heard at the 2nd community meeting & after (incorporations in preferred plan in italic)

- Sufficient parking (*increased capacity by 1/3*)
- Pedestrian park access and connections to surrounding neighborhoods (*flashing crosswalk proposed*)
- Picnic shelter (*smaller scale included*)
- Older kids-adventure play area (*included*)
- Interpretive elements and benches (*included*)
- Security of adjacent homeowners
- ROW improvements eastside of 140th (*walkway along park frontage proposed*)

Bridle Trails Neighborhood

4432 140th Ave NE (Ginzburg Acquisition)



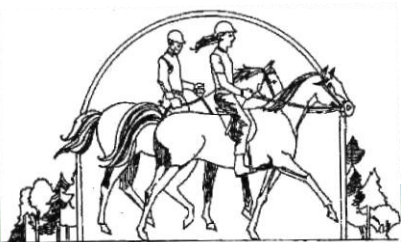
Preferred Park Plan

Preferred Park Program

- Play areas ages 2-5, 5-12 & adventure play
- Picnic shelter for community gathering (Approx. 20'x20')
- On-Site parking (total spaces max.12)
- Crosswalk for pedestrian accessibility (proposed flashing)
- Picnic tables & benches
- Both hard and soft surfaces paths & loop trail
- Interpretive signage
- Open lawn area for non-programmed sports and play
- Native plantings and wildlife viewing
- ROW frontage improvements

Next Steps:

- Park Board Recommendation
- Council Review & Approval
- Funding
- Design & Permitting
- Construction



Opportunities for Feedback & Contact Information

Bellevue Parks & Community Services

Attn: Scott Vander Hyden

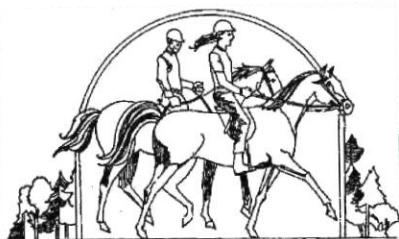
450 110th Avenue NE
Bellevue WA 98004

425-452-4169

Svanderhyden@bellevuewa.gov

Project Website

http://bellevuewa.gov/bridle_trails_levy.htm



Questions & Comments

