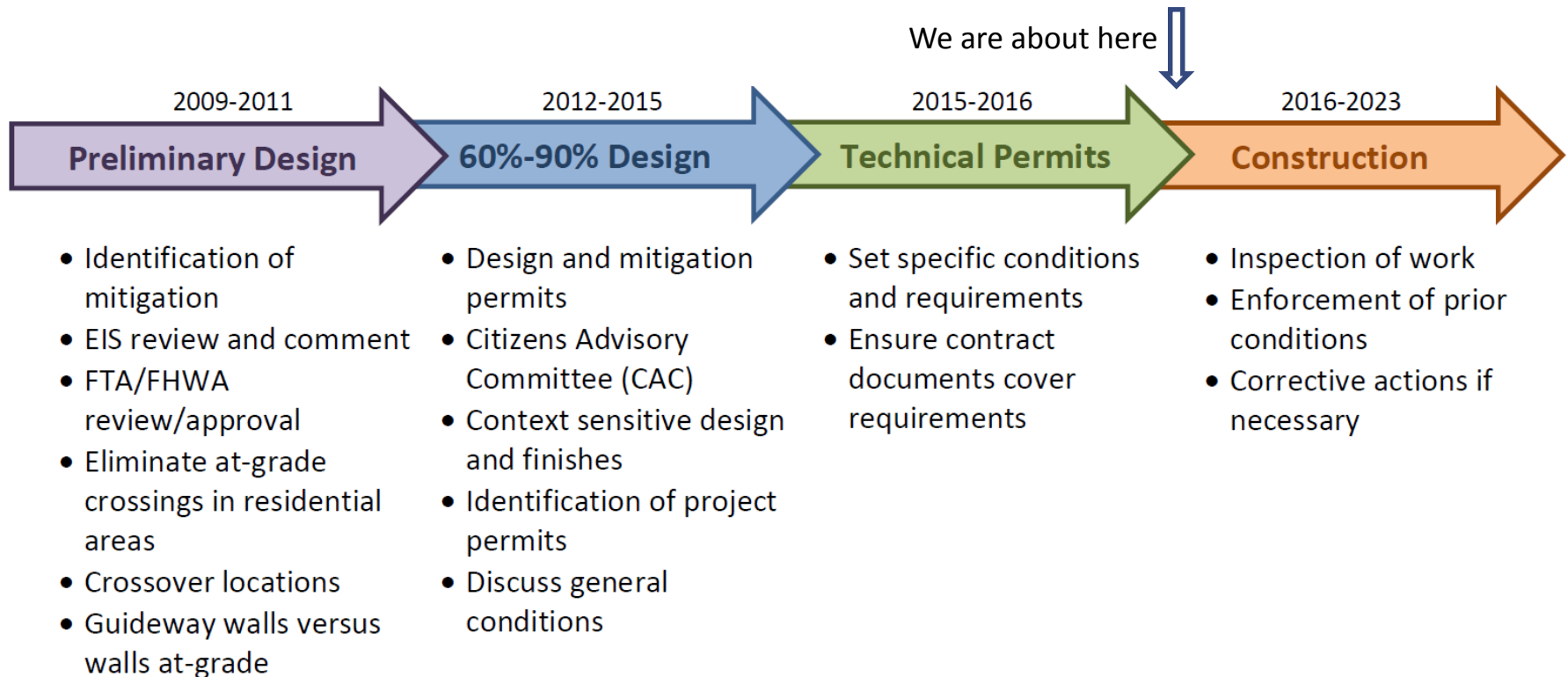


East Link Update

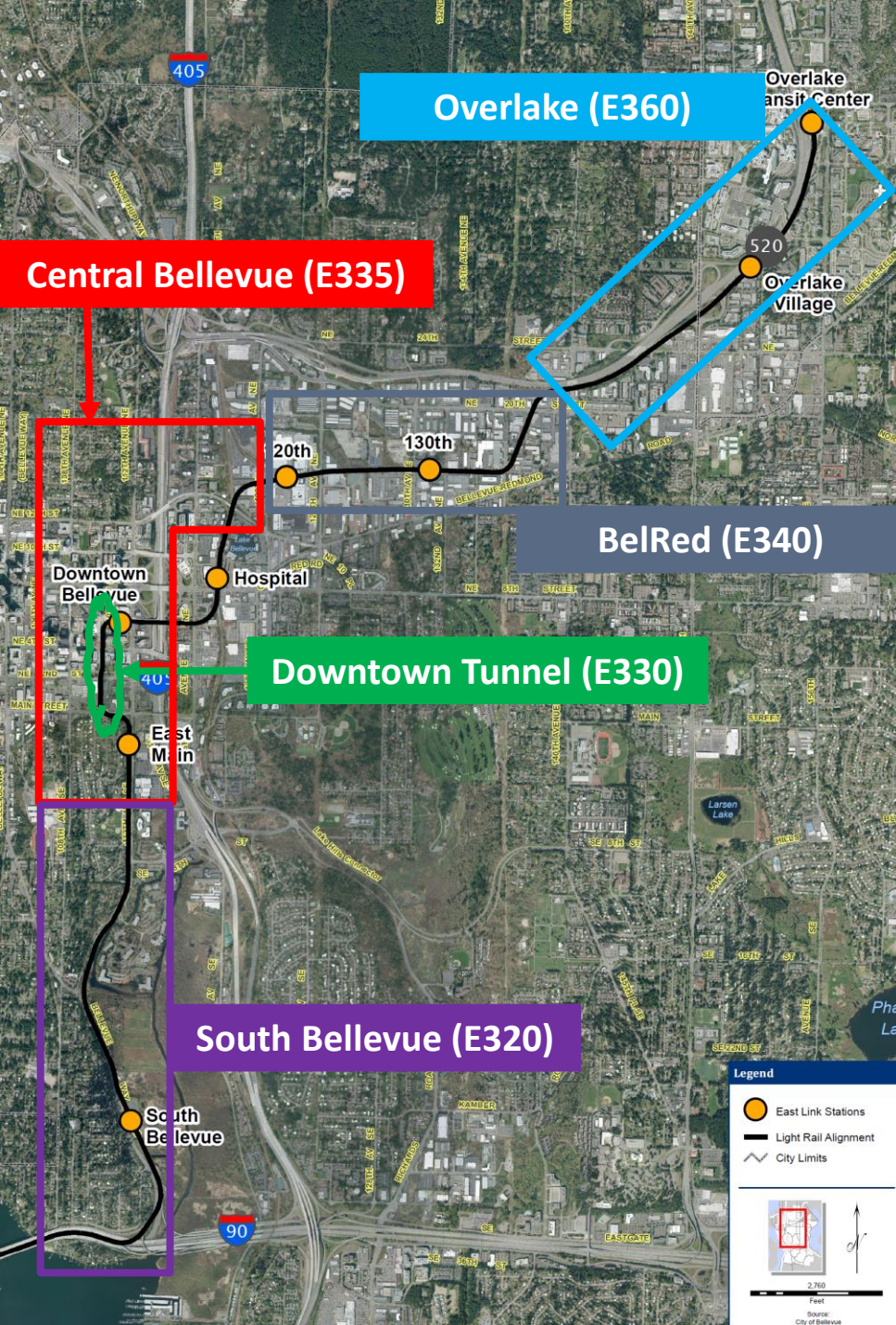
Parks & Community Services Board
May 10, 2016



Design, Mitigation and Permitting Timing



Construction Schedule



Segment

Timing

South Bellevue:

4th Q 2016 – 4th Q 2020

Central Bellevue:

2nd Q 2017 – 4th Q 2020

Downtown Tunnel:

1st Q 2016 – 2nd Q 2020

BelRed:

1st Q 2017 – 3rd Q 2020

Overlake:

1st Q 2017 – 4th Q 2020

Systems and Testing:

2021-2022

East Link History

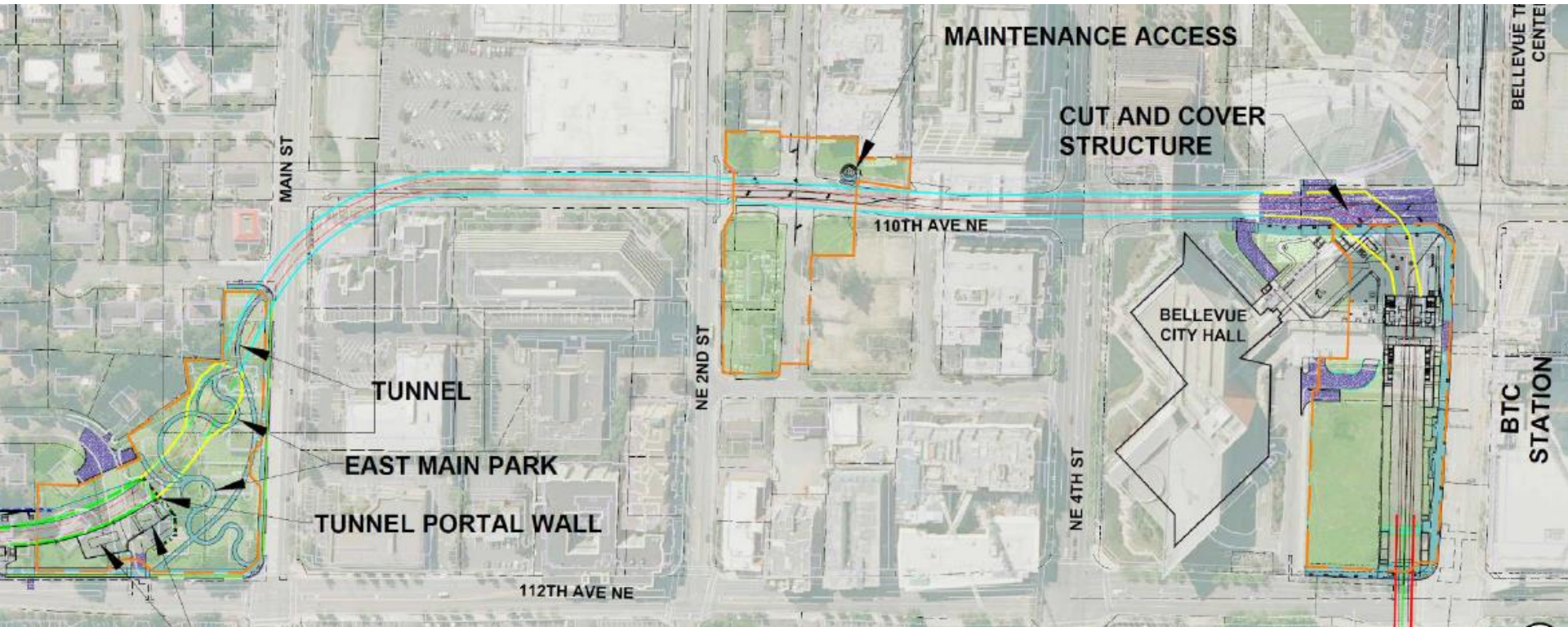
Parks & Community Services Board

Presentation	6/12/07	Light Rail Best Practices Committee Kick-off
Presentation	5/13/08	Light Rail Best Practices Committee Report
Presentation	2/10/09	Draft Environmental Impact Statement Comment Opportunity
Discussion	2/9/10	Letter to Council regarding proposed B7 Modified alignment
Memo	7/7/10	Describing City's Proposed B2M Alignment
Memo	11/2/10	Supplemental Draft EIS Comment Opportunity
Presentation	1/10/12	First City/Sound Transit Memorandum of Understanding
Presentation	7/9/13	Final Alignment Overview
Presentation	9/9/14	Public Comment Opportunity on Grant-funded Land Conversion
Discussion	10/14/14	Voted Not to Send Letter to State RCO Regarding Conversion

East Link Parkland Balance Sheet

Outgoing - City Transfers in Fee	Acres
Mercer Slough Nature Park	2.03
Surrey Downs Park	0.81
NE 2nd Pocket Parks	0.02
	2.86
Grand Total Outgoing	2.86
Incoming - ST Transfers in Fee	Acres
Mercer Slough Nature Park*	1.63
Surrey Downs Park*	0.11
Link Lid Park (112th and Main)	1.79
	3.53
Incoming - City Acquisitions	
Mercer Slough Nature Park	6.21
NE 2nd Pocket Parks	0.43
	6.64
Grand Total Incoming	10.17
Net Difference	+7.31
*estimated property remnant	

NE 2nd Pocket Parks



Sound Transit: Surrey Downs Park Mitigation





- \$412,000 cash to construct entrance roadway, parking area and associated landscaping

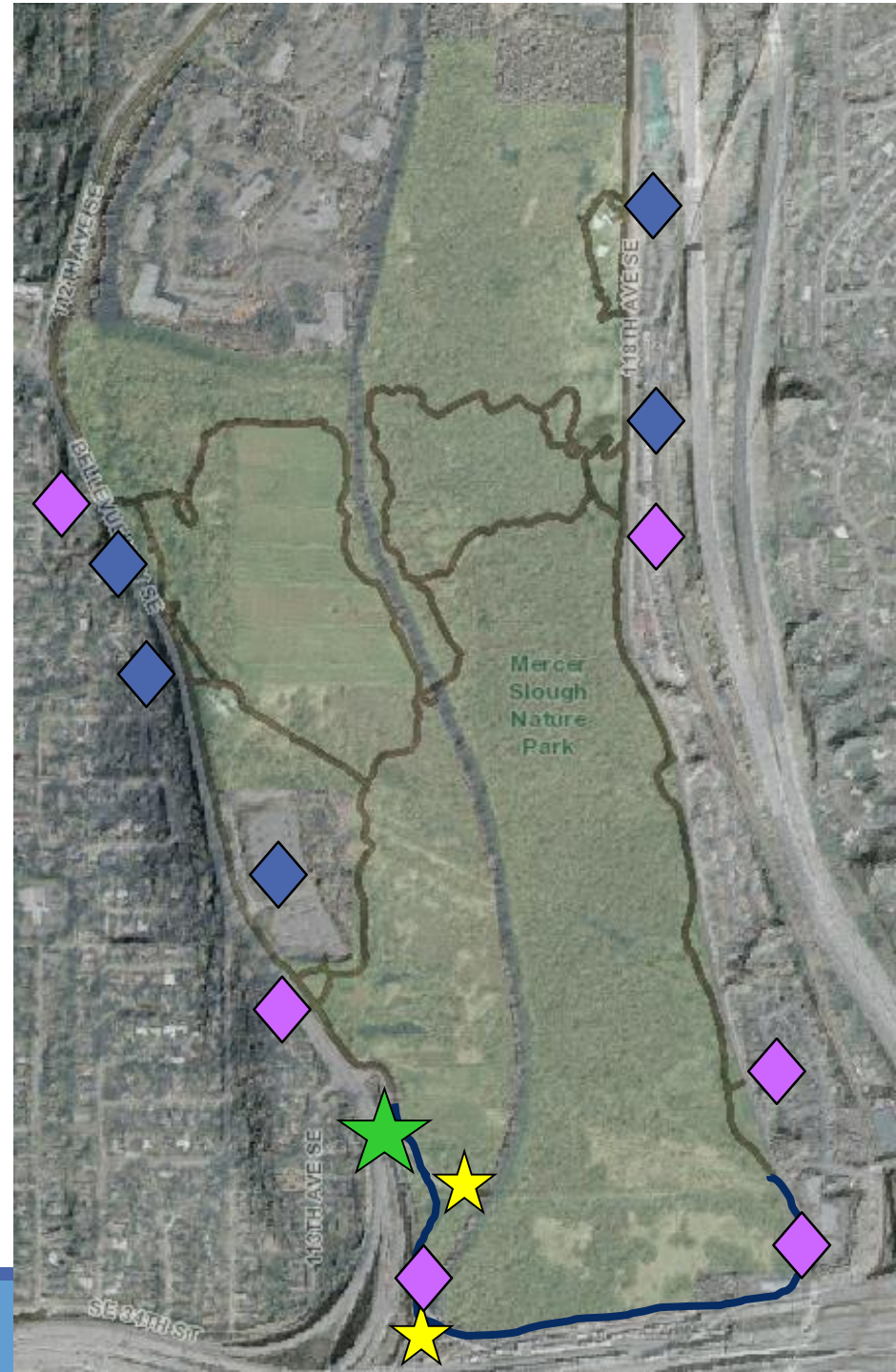


Sound Transit: Surrey Downs Park Mitigation



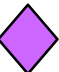




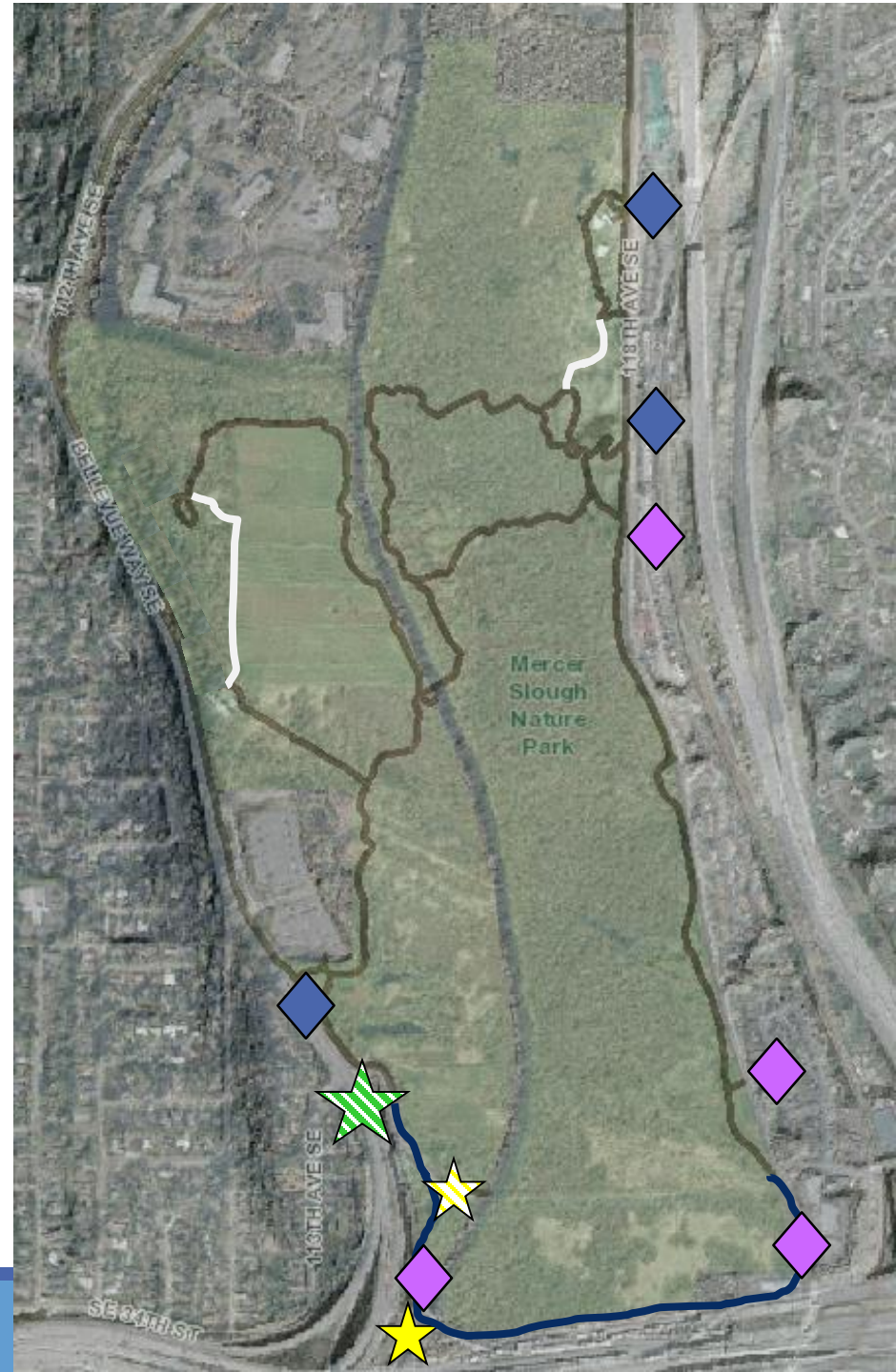
Mercer Slough Public Access Points Current

-  (1) Boat Launch
Parking
Pedestrian and Bike
-  (5) Parking
Pedestrian and Bike
-  (6) Pedestrian and Bike
-  (2) Watercraft





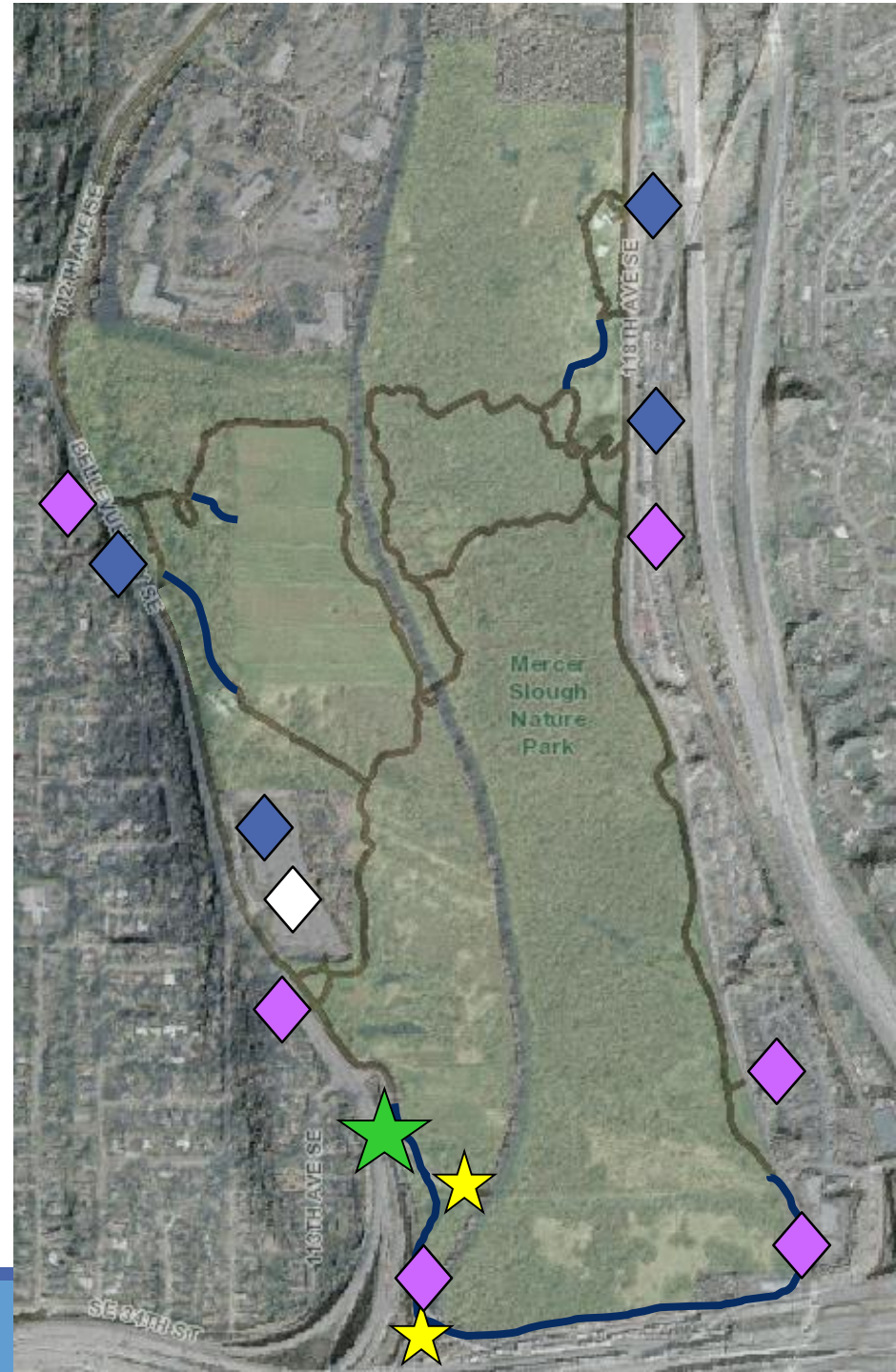
Mercer Slough Public Access Points During Construction

-  Boat Launch
-  (1) Parking
Pedestrian and Bike
(periodic closure)
-  (3) Parking
Pedestrian and Bike
-  (4) Pedestrian and Bike
-  (1) Watercraft
(periodic closure)
-  (1) Watercraft



Mercer Slough Public Access Points Post Construction

-  Boat Launch
-  (1) Parking
Pedestrian and Bike
-  (4) Parking
Pedestrian and Bike
-  (6) Pedestrian and Bike
-  (1) Light Rail Station
-  (2) Watercraft

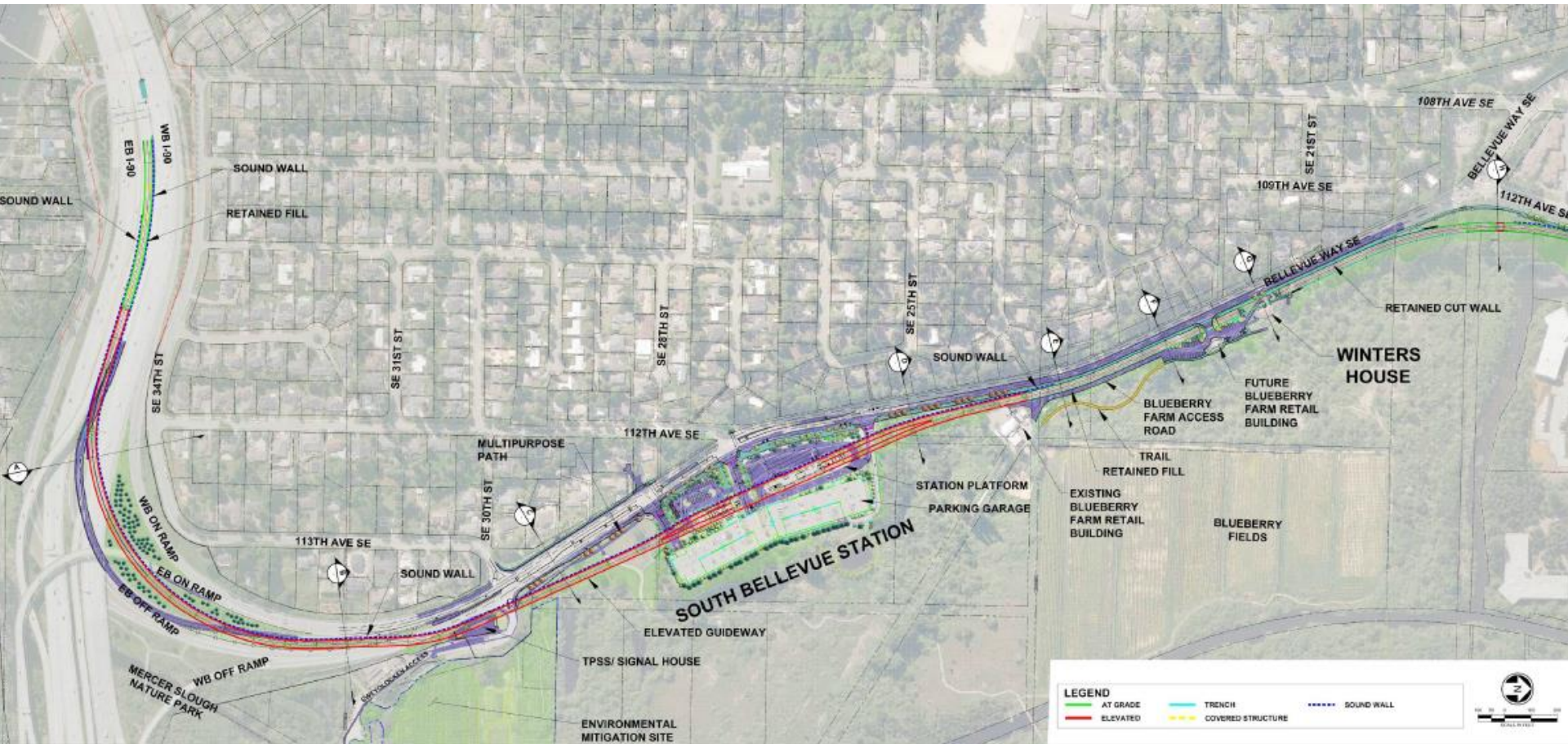


Sound Transit Mercer Slough Mitigation

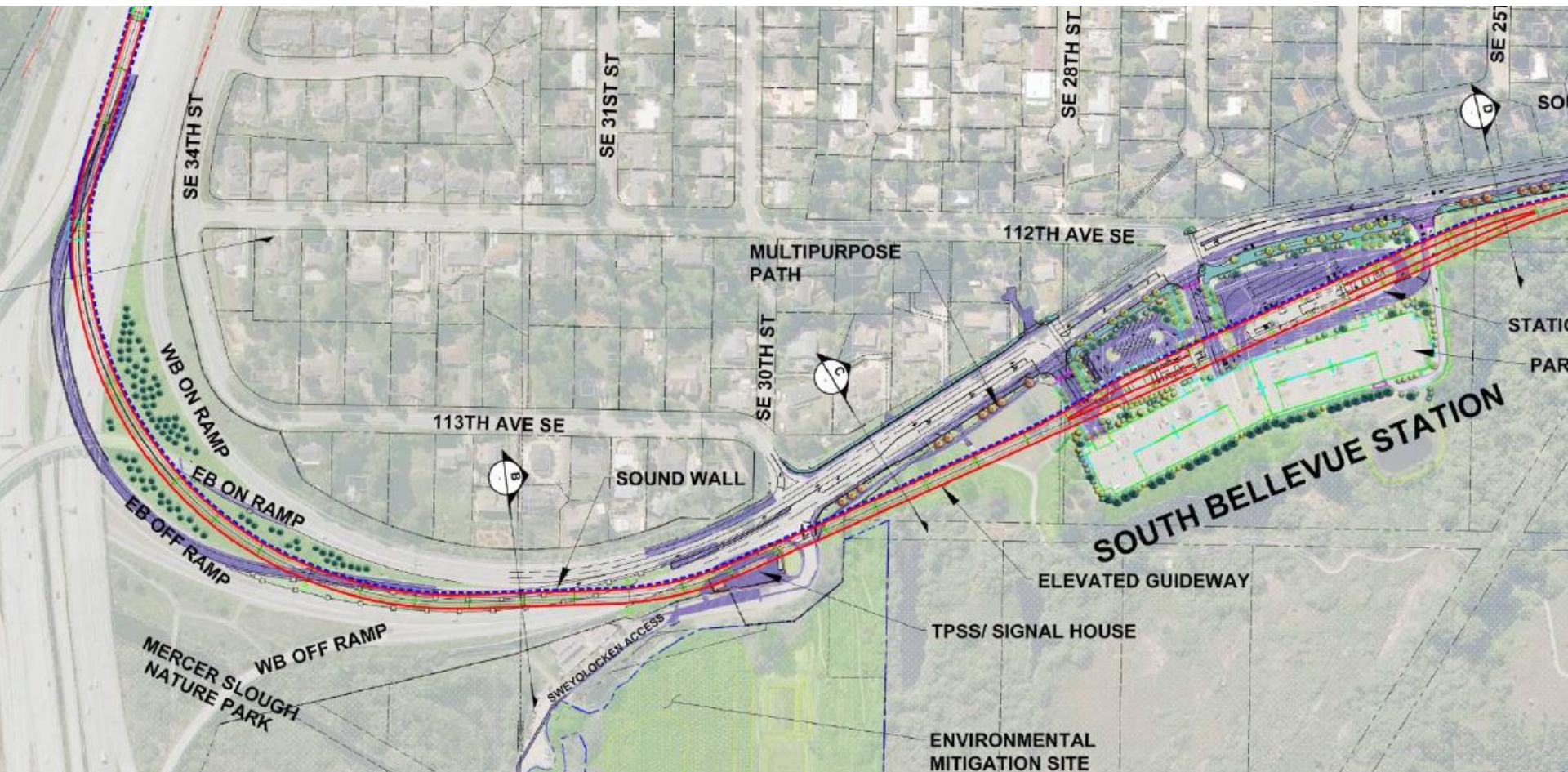
Tree Summary		Wetland Summary	
Trees to be Removed	Trees Added	Wetland Impacts	Wetland Mitigated
691	2,873	5.2 acres	6.4 acres

- \$2,340,000 cash to construct:
 - 700 linear feet of new ADA-compliant boardwalk trail
 - 1,500 square-foot building to house park user restrooms and u-pick blueberry and seasonal farm-fresh produce sales
- \$213,000 estimated value of 1.63 acre wetland remnant from P&R
- Wetland and stream restoration estimated at \$6.3 million (90% estimate)
- ~4,000 linear feet of new multi-purpose path along Bellevue Way SE (part of the Periphery Loop Trail) with planter beds and street trees
- ~170 foot landscaped lid over trench in front of Winters House

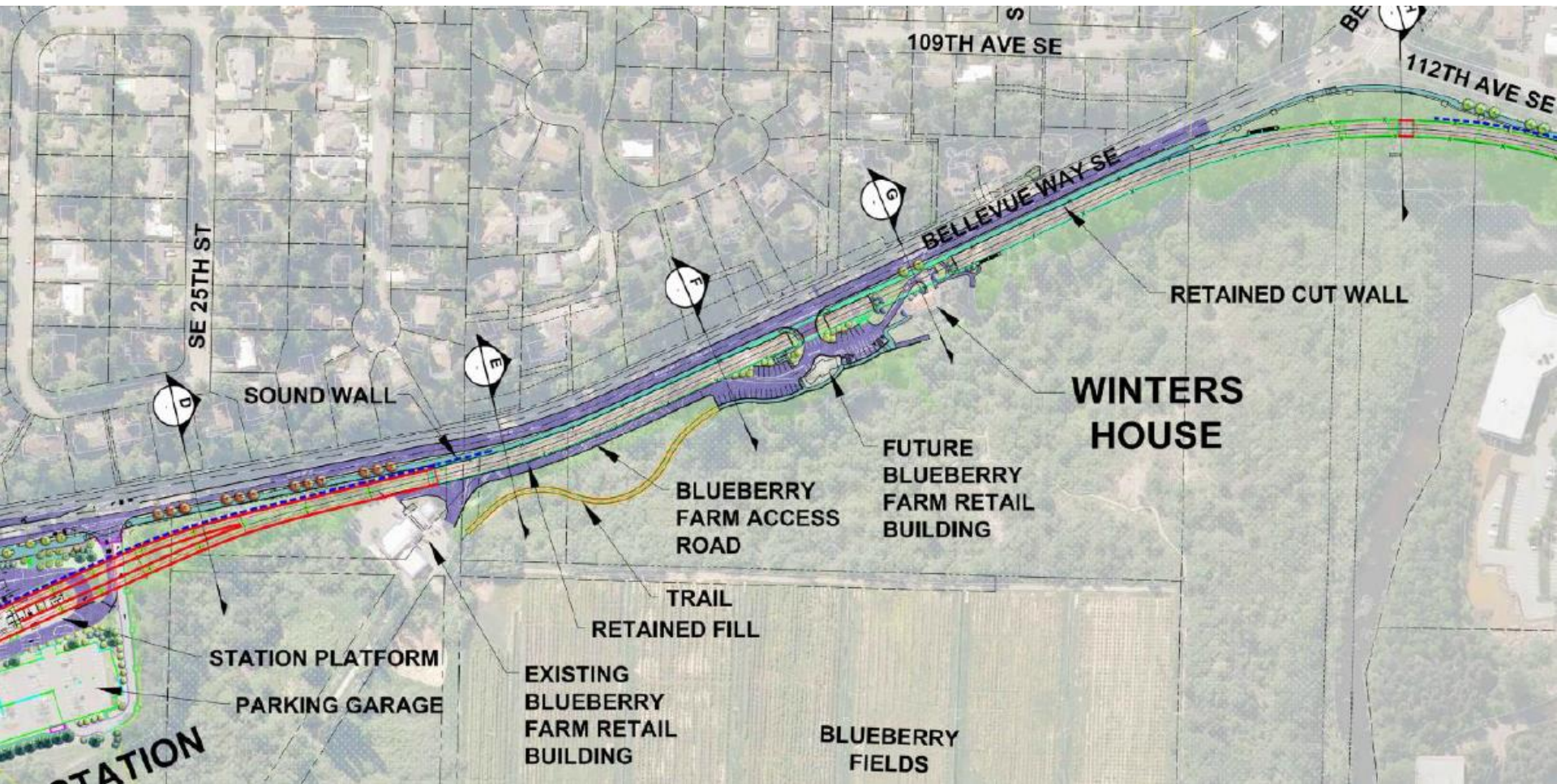
East Link Overview



East Link: I-90 to S. Bellevue Park & Ride

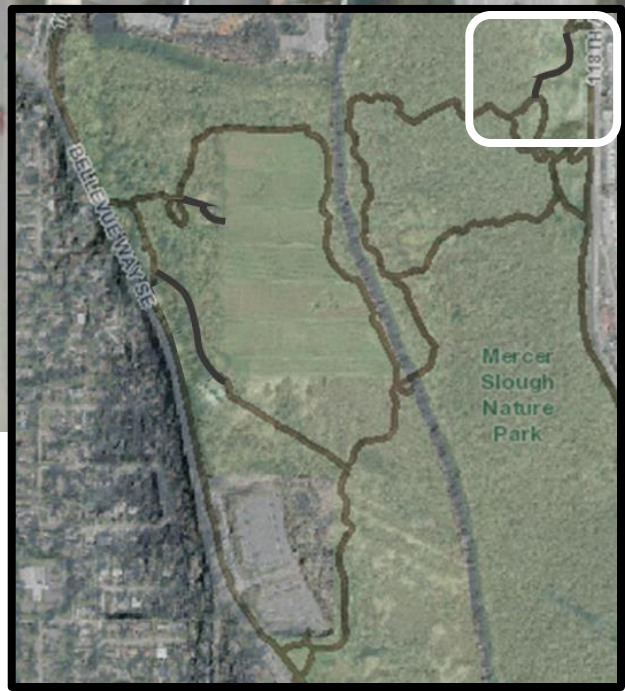


East Link: S. Bellevue Park & Ride to 112th Ave SE



Reconstructed Park Access at Winters House





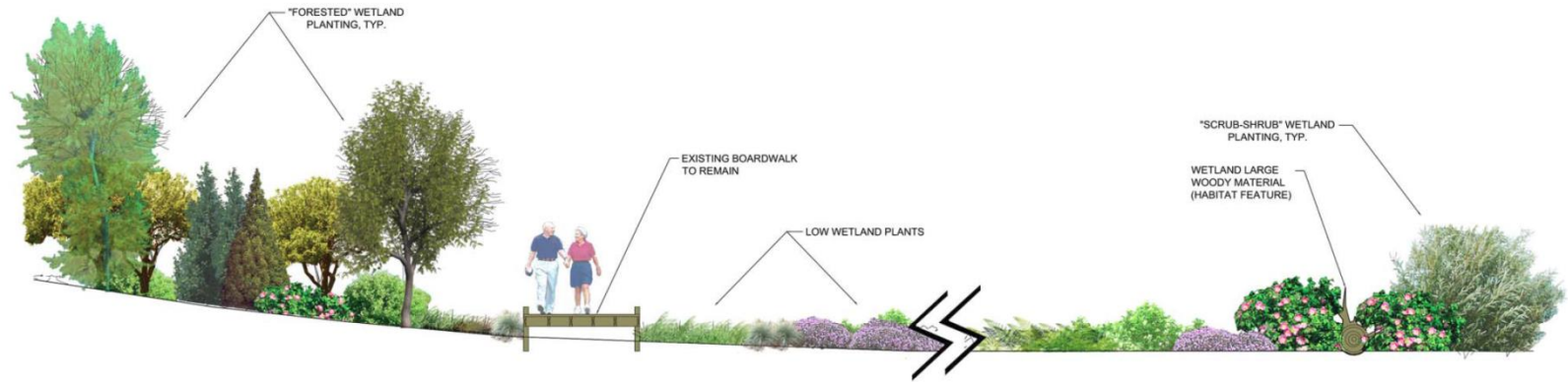
Trail Development Plan

118th Avenue NE

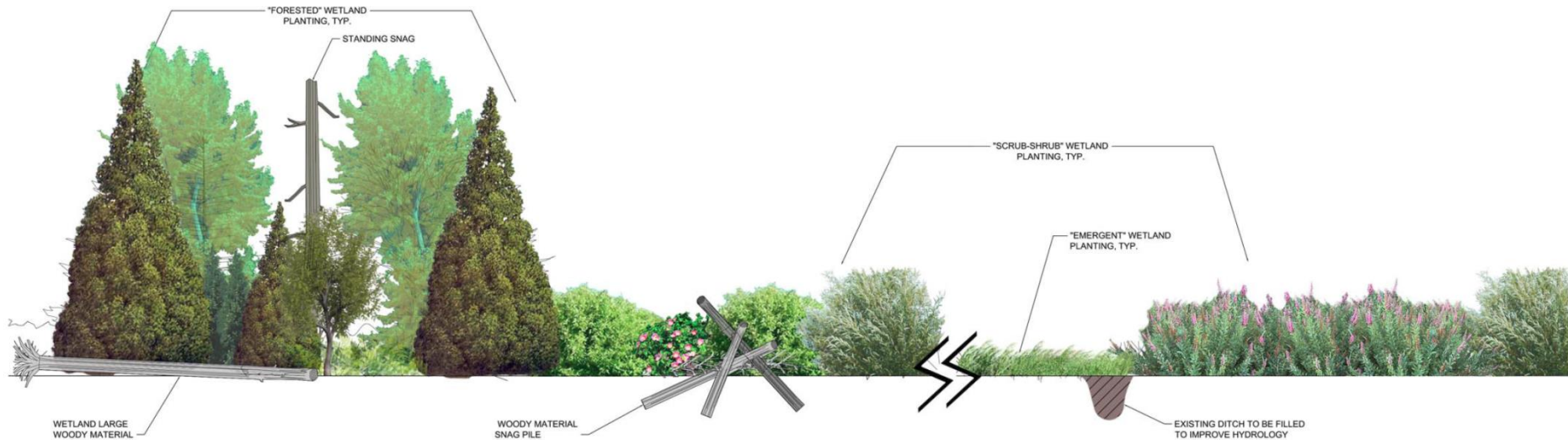
Sweyolocken Mitigation Plan



Sweyolocken Mitigation Section



SECTION A-A



SECTION B-B

Bel-Red: West Tributary Wetland



East Link Update

Parks & Community Services Board
May 10, 2016

