

**Park Board Presentation
February 10, 2015**



**Bellevue Parks &
Community Services**

A wide-angle photograph of a park. In the foreground, a stone-lined fountain with water cascading into a pool. The middle ground is a large, well-maintained green lawn where several people are walking or playing. In the background, a dense line of trees separates the park from a city skyline featuring several modern high-rise buildings under a clear blue sky. The top of the frame is partially obscured by the dark, leafy branches of a tree.

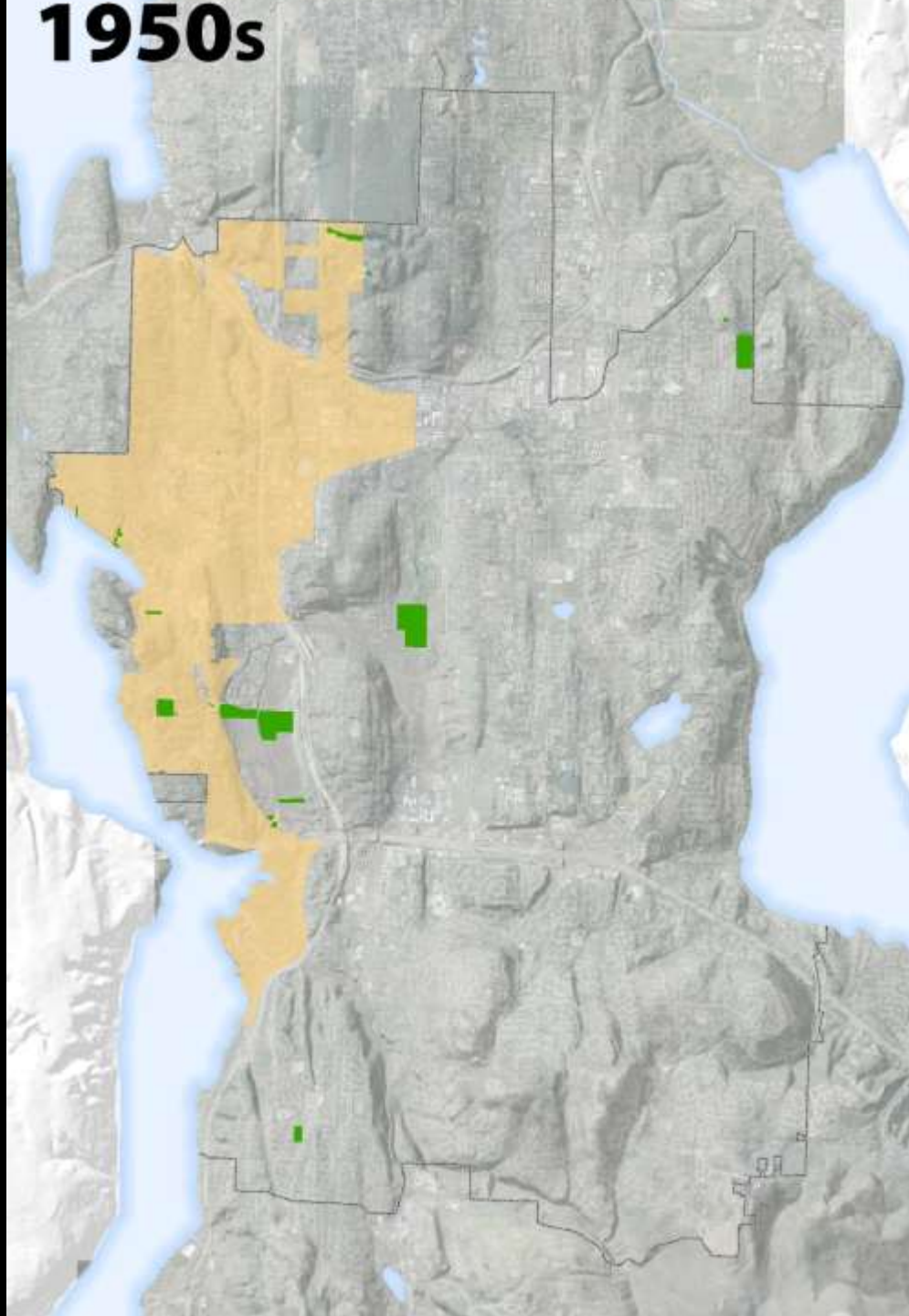
***Bellevue Parks
& Open Space System*** • **A Legacy of Vision**

A City in a Park

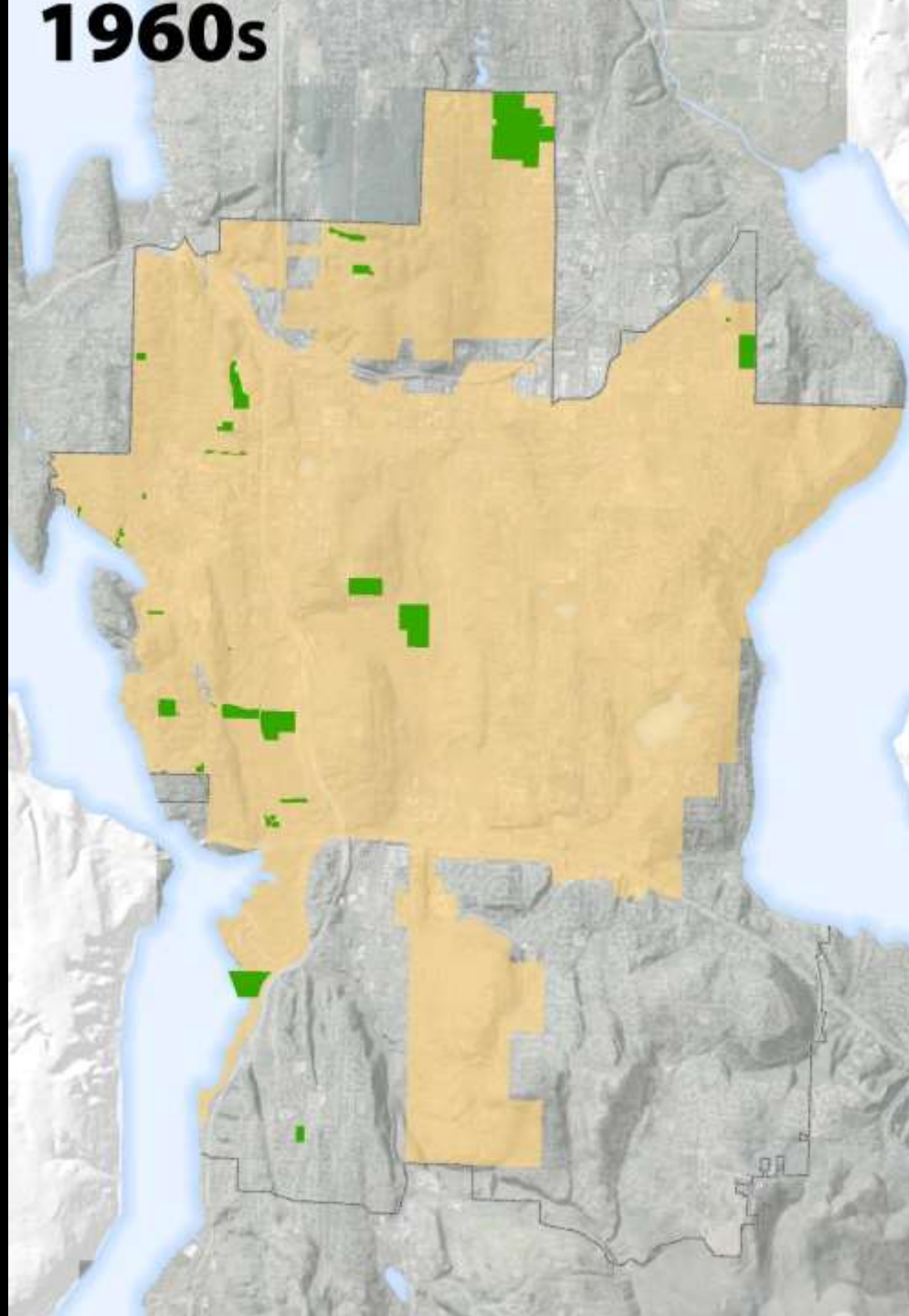


- ▶ Create an open space system of impressive natural habitats that complement the urban landscape
- ▶ Provide access to a variety of parks and recreation experiences for all residents

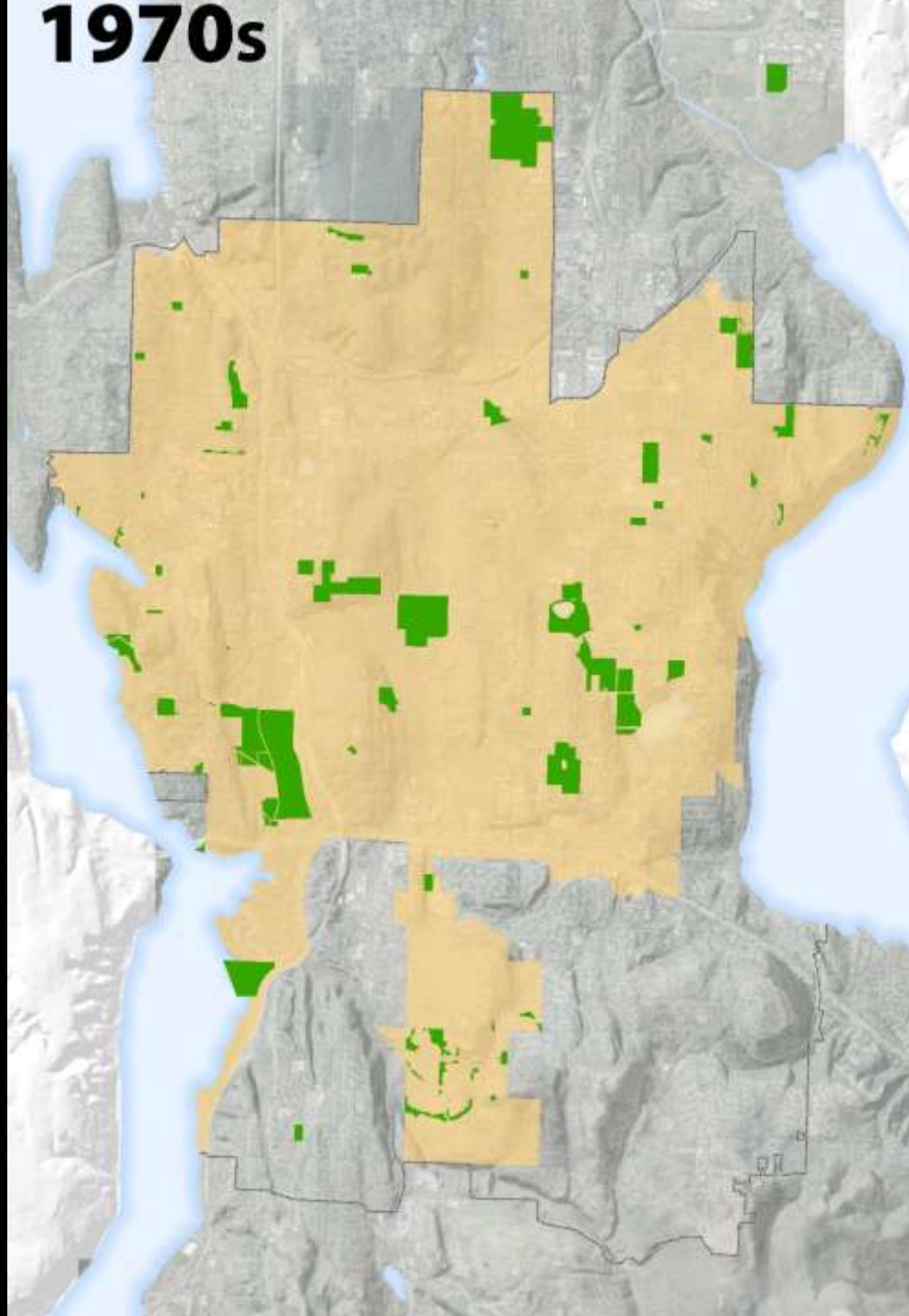
1950s



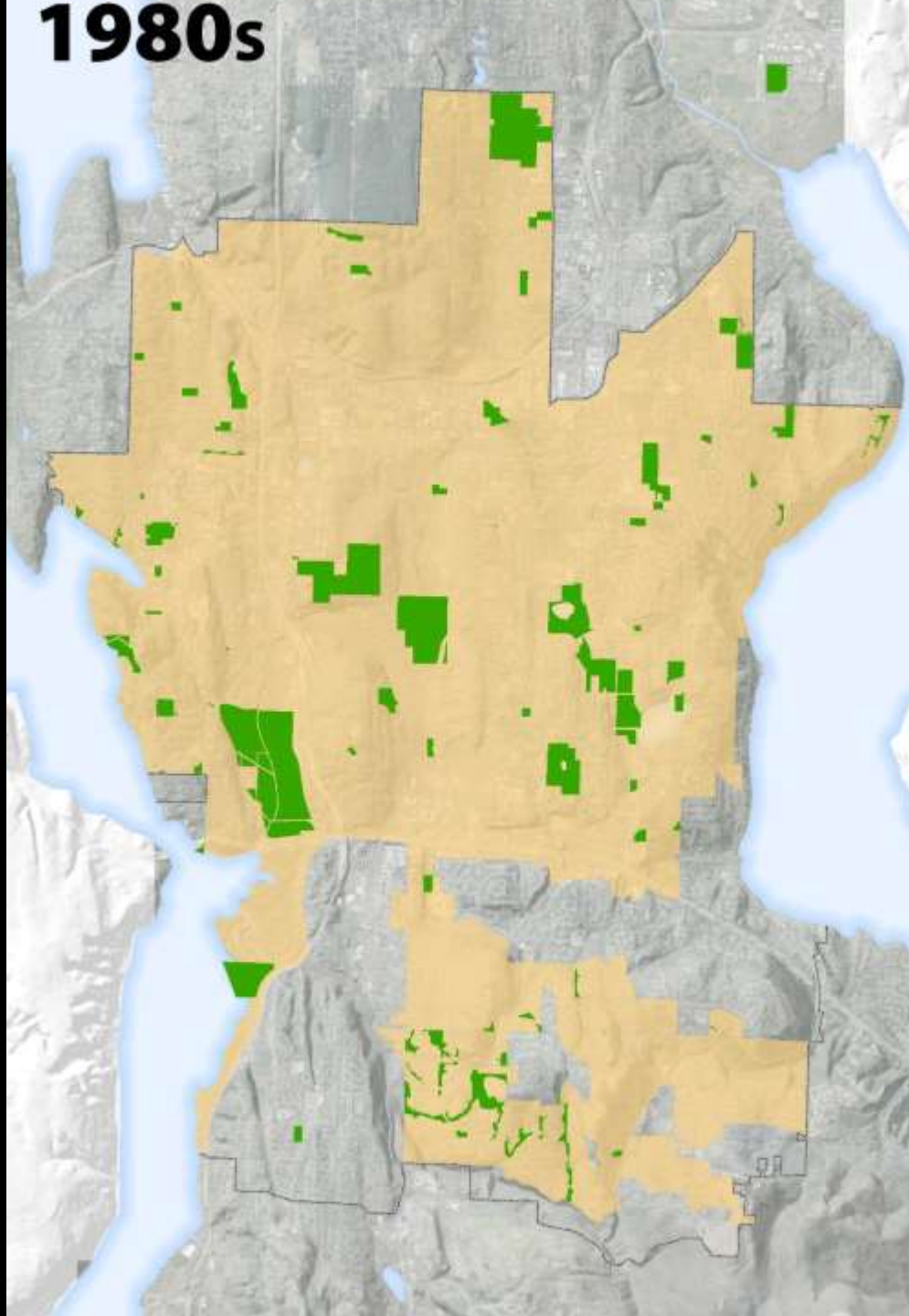
1960s



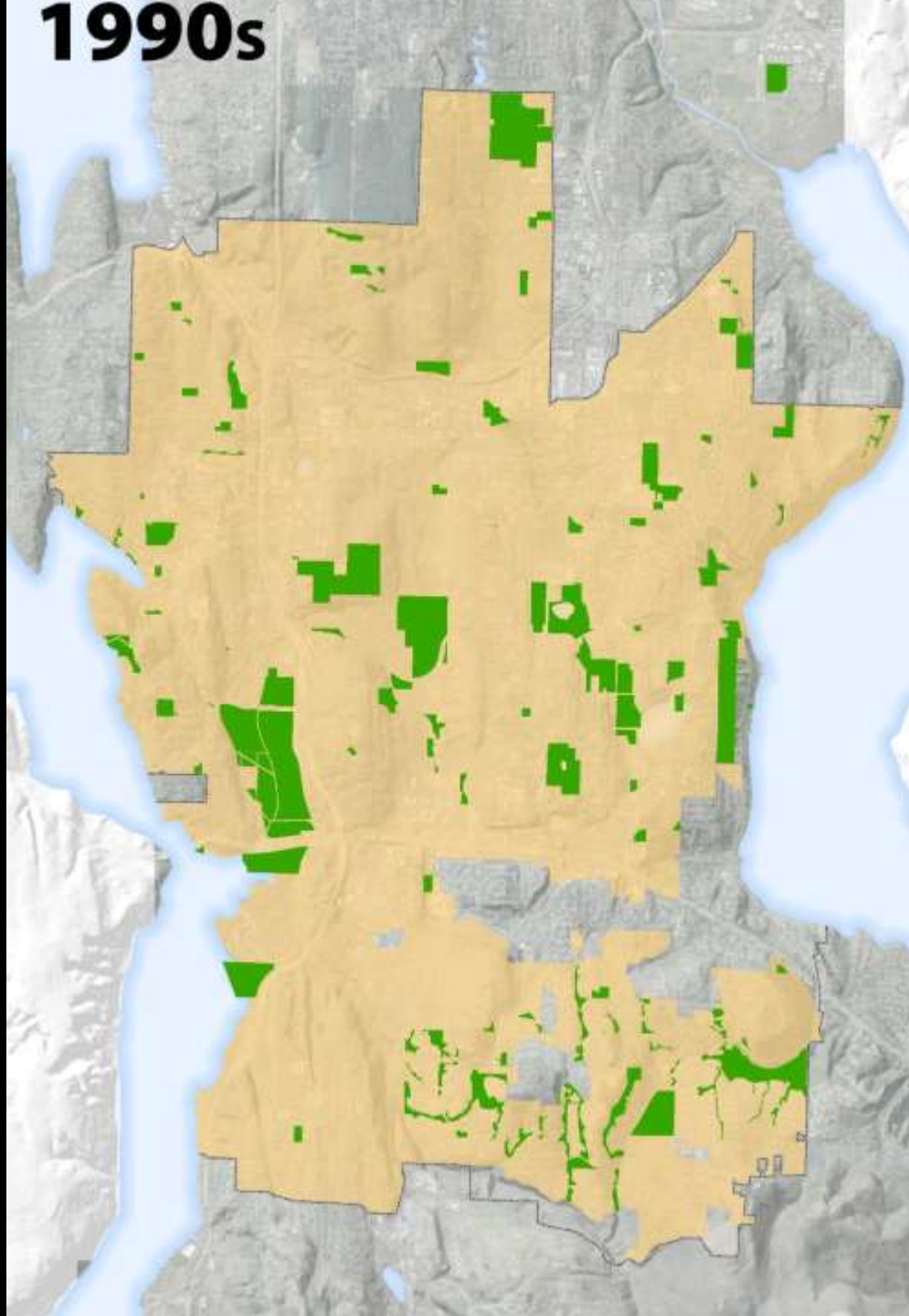
1970s



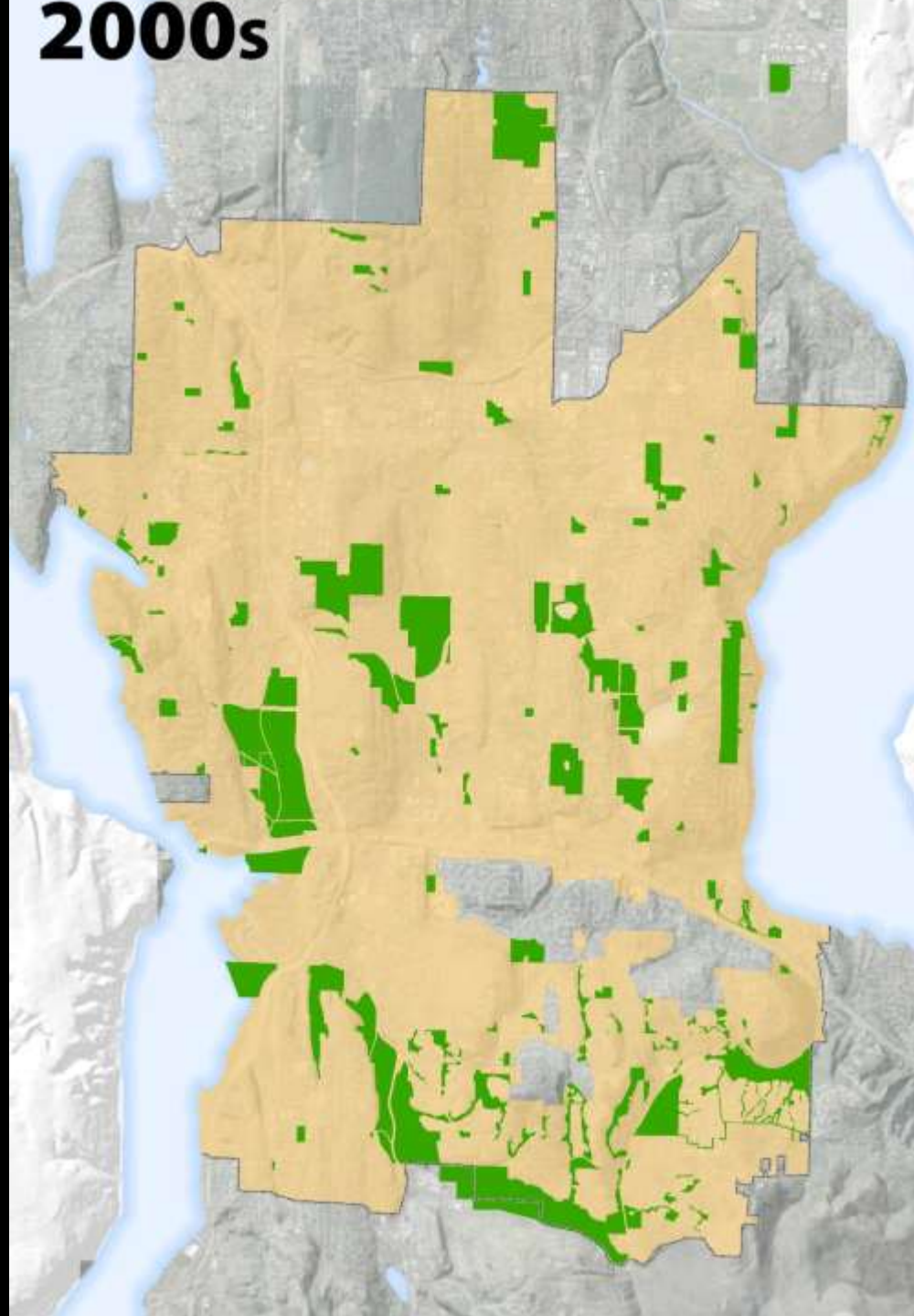
1980s



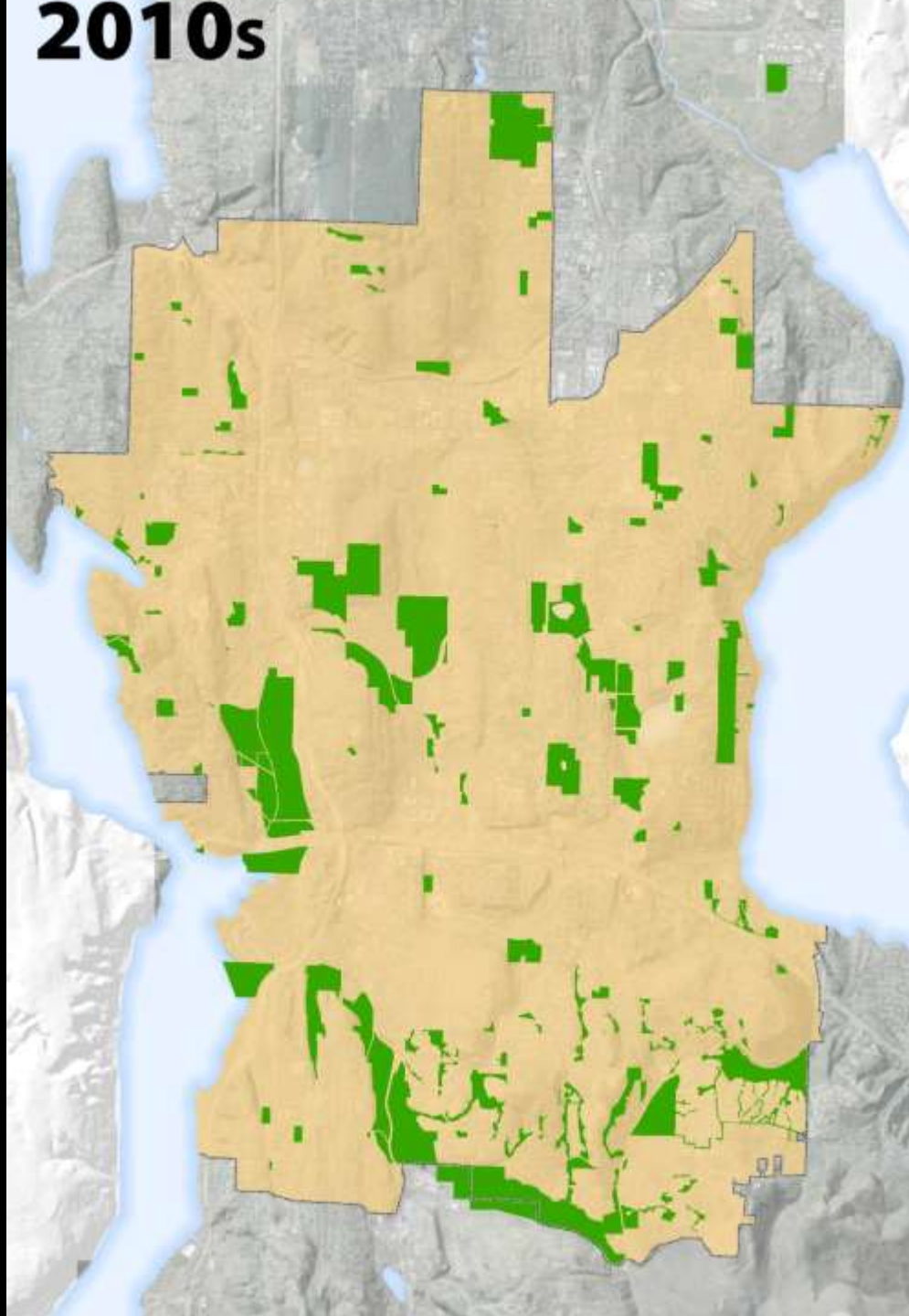
1990s



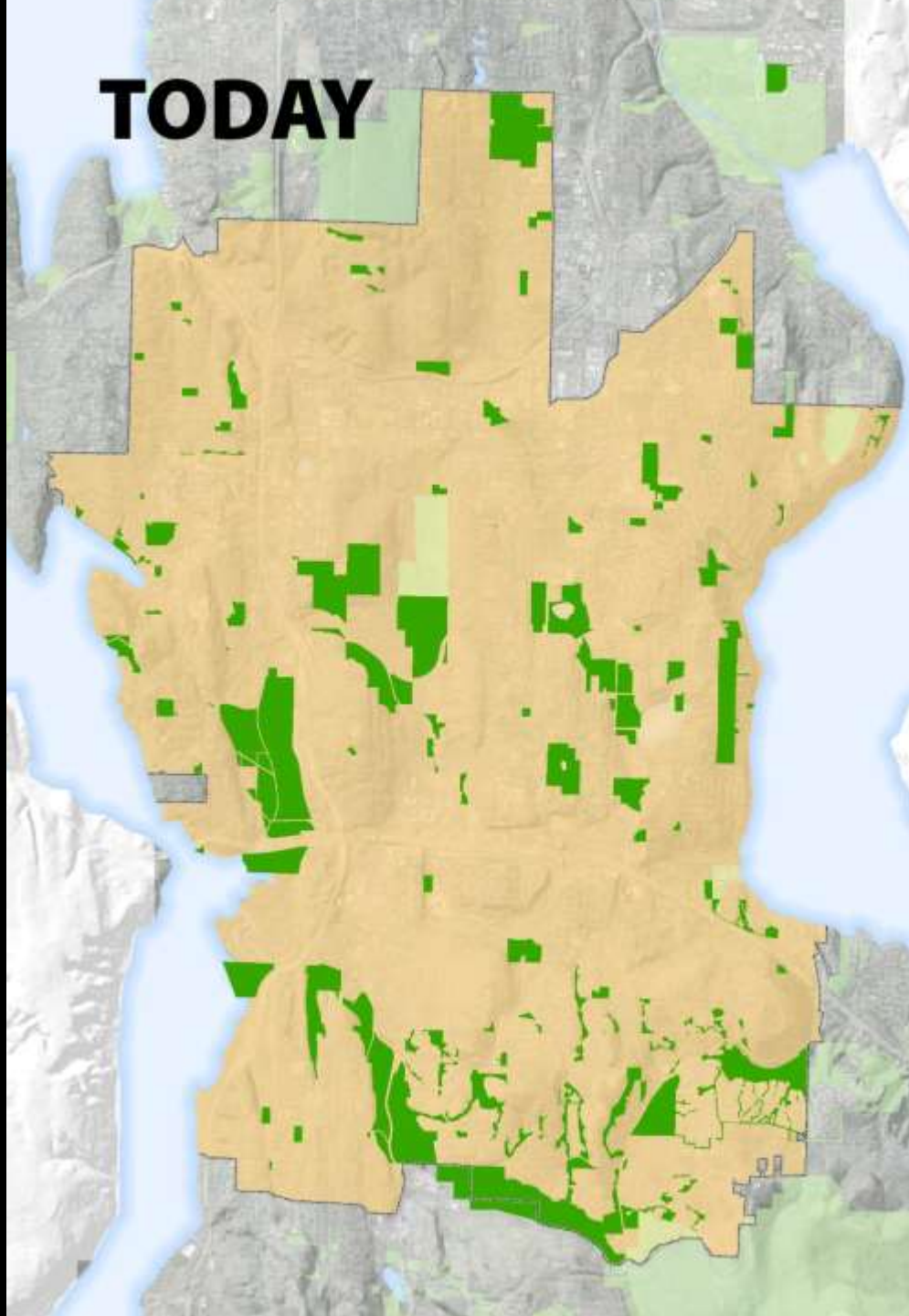
2000s



2010s



TODAY



Acquisitions – 1950s



Aerial of Bellevue from the west, ca. 1955.
(From the collections of Eastside Heritage Center, 1998.25.49)

► Approximately **70 Acres** Acquired, including all or portions of:

Meydenbauer Beach Park,
Clyde Beach Park, Pikes
Peak Greenbelt, Mercer
Slough Nature Park,
Killarney Glen Park,
Waterfront Street Ends

Acquisitions – 1960s



- ▶ Approximately **220 Acres** Acquired, including all or portions of:

Mercer Slough Nature Park, Hidden Valley Sports Park, Clyde Beach Park, Bellevue Municipal Golf Course, McCormick Park, Goddard Park, Enatai Neighborhood Park, Cherry Crest Park, Newcastle Beach Park, Bovee Park, Ardmore Park, Northwest Center, and Wilburton Hill Park

Acquisitions – 1970s



- ▶ Approximately **630 Acres** Acquired, including all or portions of:

Chism Beach Park, Crossroads Community Park, Enatai Neighborhood Park, Forest Hills NGPA, Highland Park, Hillaire Park, Ivanhoe Park, Kelsey Creek Park, Lake Hills Greenbelt, Mercer Slough Nature Park, Newcastle Beach Park, Robinswood Community Park, Tam O'Shanter Park, Westwood Highlands NGPA, Wilburton Hill Park, Woodridge Open Space

Acquisitions – 1980s

- ▶ Approximately **260 Acres** Acquired, including all or portions of:

Bellevue Downtown Park, Crossroads Community Park, Several NGPA tracts, Goldsmith Neighborhood Park, Kelsey Creek Park, Lake Hills Greenbelt, Mercer Slough Nature Park, N Bellevue Community Center, Robinsglen Nature Park, Robinswood Park, Wilburton Hill Park



Acquisitions – 1990s



- ▶ Approximately **515 Acres** Acquired, including all or portions of:

Lewis Creek Park, Bellevue Downtown Park, Bellevue Golf Course, Bellevue Marina, Crossroads Community Park, Several NGPA tracts, Kelsey Creek Park, Lake Hills Greenbelt, Lattawood Park, Mercer Slough Nature Park, Viewpoint Park, Spady Property, Richards Valley Greenway properties

Acquisitions – 2000s

- ▶ Approximately **793 Acres** Acquired, including all or portions of:



Carrigan Property, Coal Creek Natural Area, Several NGPA tracts, Eastgate Park, Lakemont Open Space, Lewis Creek Park, Meydenbauer Bay Properties, Richards Valley Open Space, Sunrise Park, Surrey Downs Park, Weowna Park, Wilburton Hill Park, Forest Glen Greenway, Mercer Slough Nature Park (Moon-Ross), Woodridge Open Space, Newport Hills Property (Tyler), Bridle Trails (Paschinsky/Bridle Trails Corner Park & Ginzburg), NE 2nd Properties (Future Park)

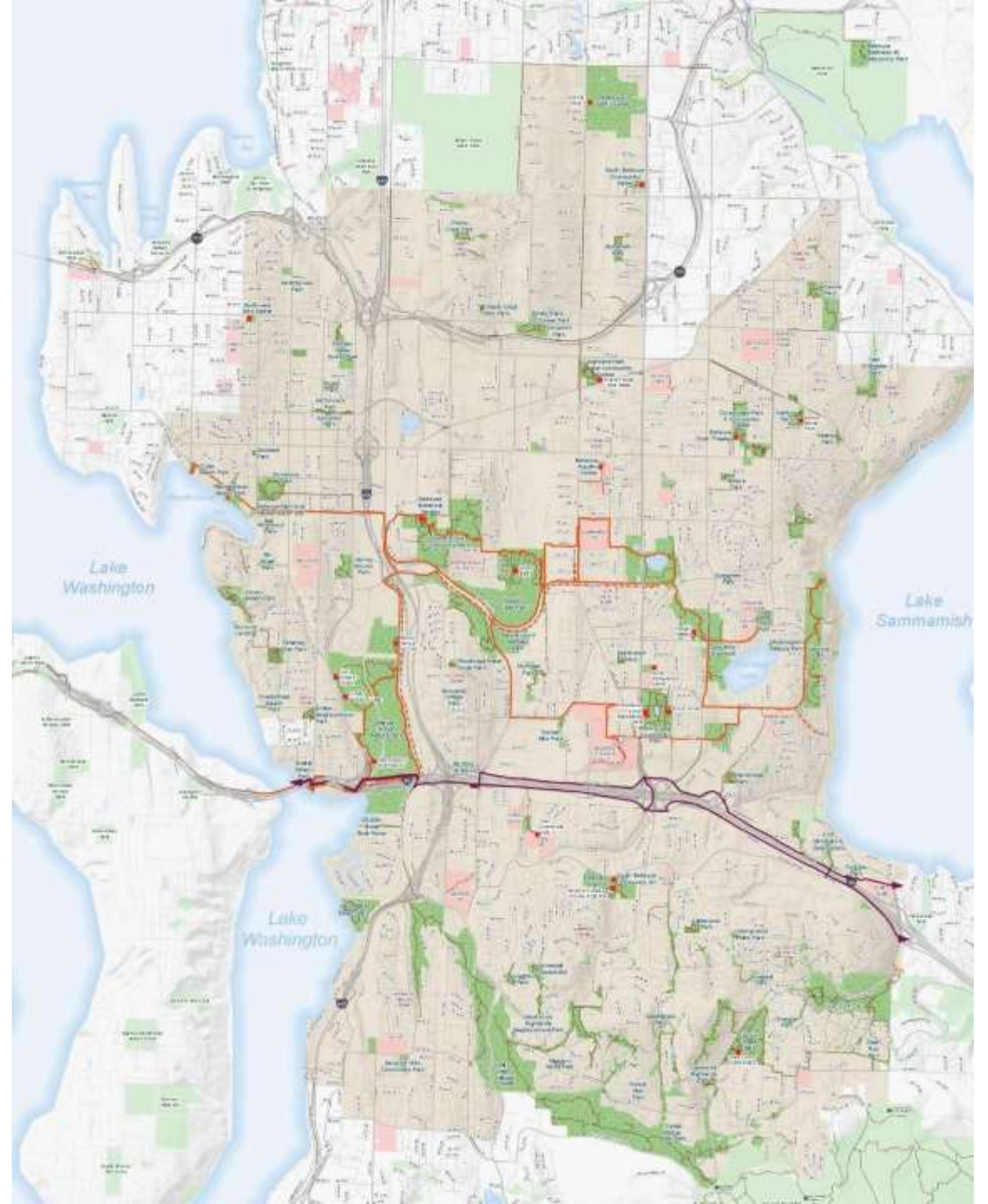
Properties Acquired Since 2008

(With levies and grants)

- ▶ 28.81 Acres Acquired (and counting), including:
 - Bridle Trails Neighborhood - 2 properties
 - Newport Hills Neighborhood
 - Eastgate Neighborhood
 - Mercer Slough Natural Area Expansion
 - Coal Creek Natural Area Expansion
 - Bel-Red Corridor



Bellevue's Park & Open Space System is Still Evolving



Policy Guidance

City of Bellevue Comprehensive Plan

“The city directs its acquisition efforts toward achieving a coordinated and connected system of open space and greenways that protects significant environmental features, preserves habitat, and provides the land needed for park-related facilities and activities. Property acquisition is often driven by availability and affordability.”



Parks & Open Space System Plan - 2010

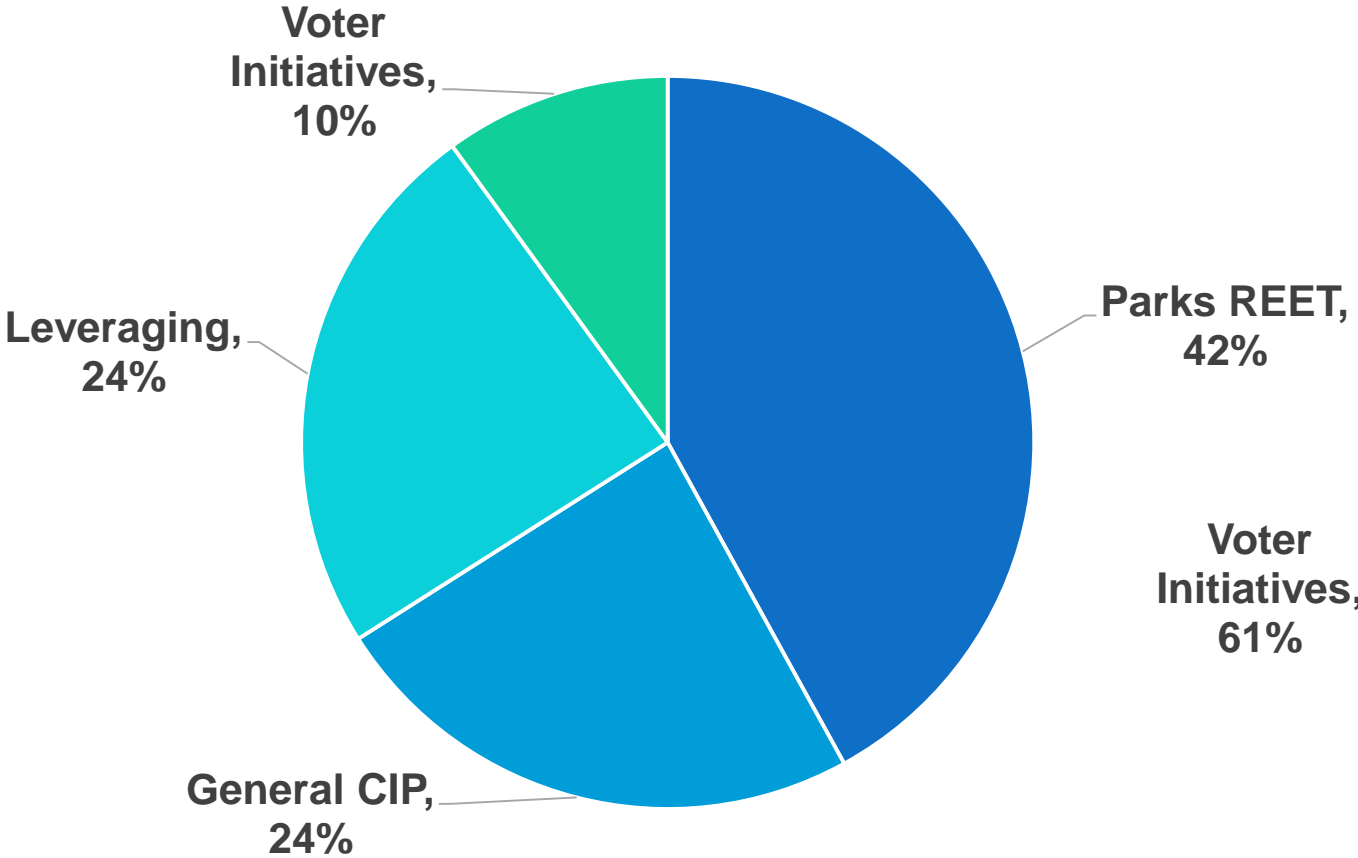
“Priority will be placed on acquiring land adjacent to existing parkland, along shorelines, environmentally sensitive land, or linkages that provide connections between parks and open space areas. Priority will also be given to increasing park access for neighborhoods that are less served than others.”



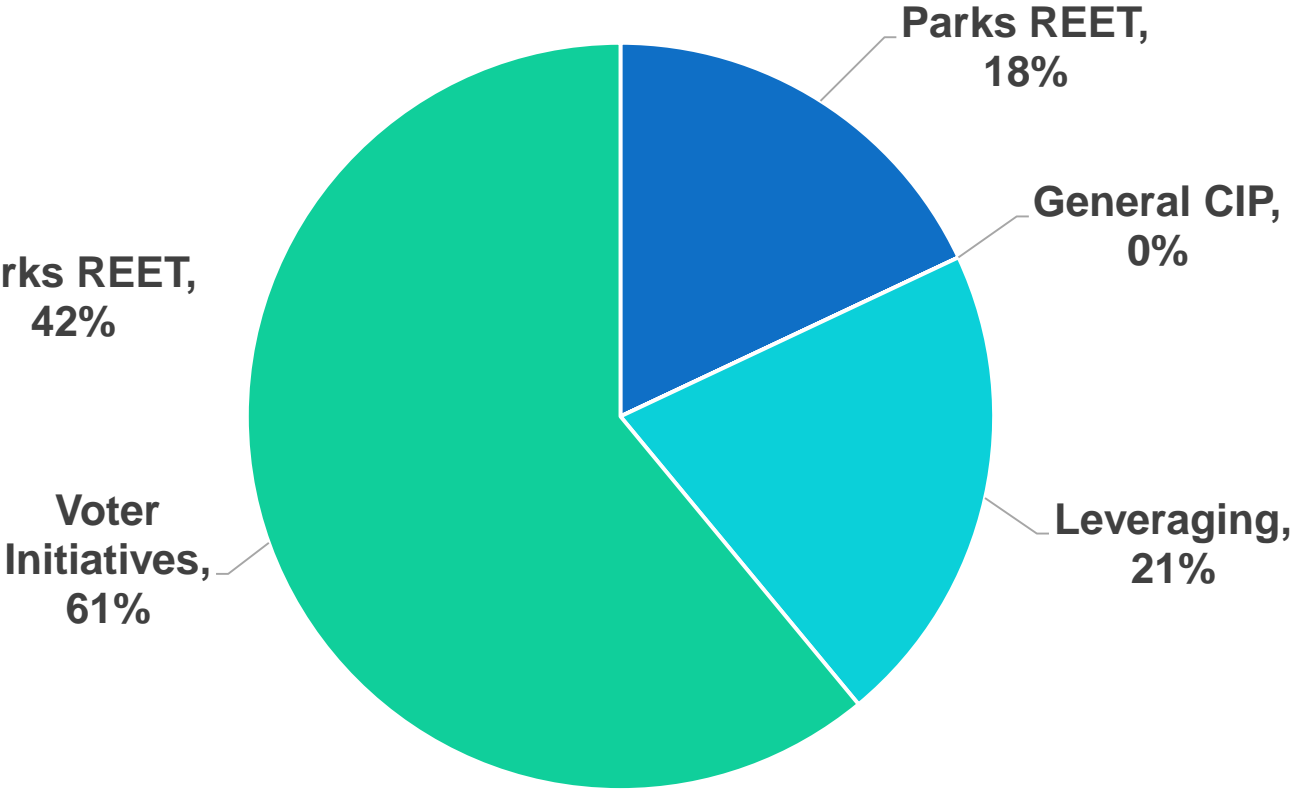


Funding

Parks Acquisition Funding



Through 2008
(Approximately \$63M over 20 years)



Since 2008
(Approximately \$11M over 6 years)

Leveraging

- ▶ Acquisitions require leveraging resources from multiple sources, including:
 - ▶ King County Conservation Futures
 - ▶ King County Parks Levy
 - ▶ Washington State Recreation and Conservation Office
 - ▶ Federal Land & Water Conservation Funds
 - ▶ Community Trade & Economic Development
 - ▶ Private donations



Acquisition Priorities

Urban Park System

Downtown Parks & Open Spaces

- ▶ Expand the NE Gateway to Downtown Park
- ▶ NE 2nd Linear Park
- ▶ NW Quadrant of Downtown



Urban Park System *Bel-Red Corridor & Greenway*



Waterfront Access



Neighborhood Access



Bridle Trails Corner Park *(Now Open)*

Adjacencies & Opportunities



**Meydenbauer Bay Park Expansion –
Bayvue Village**



**Airfield Park –
Bellevue School District Lakewood Property**

Partnerships



Botanical Garden Expansion – The Bellevue Botanical Garden Society donated \$200K toward the acquisition of the City/Koh property

Multiple Benefits



Lewis Creek Headwaters

Crossroads Park



Eastgate Park Expansion

Multiple Benefits (Cont)

Eastgate Park Expansion

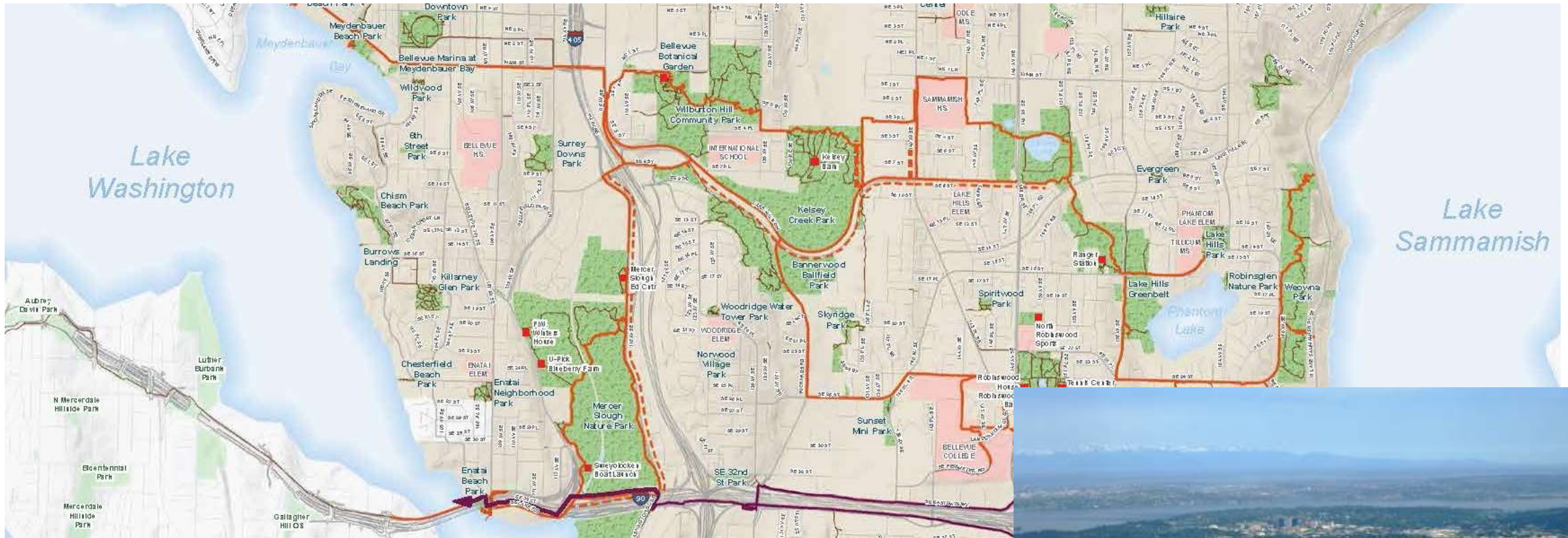
- Provided recreational benefit
- Preserved forested land, enhancing air and water quality
- Provides neighborhood trail connection
- Provides natural buffer for neighborhood
- Permanent easement along Newport Way for future sidewalk connections





Greenways & Corridors

Lake-To-Lake Greenway



Examples:

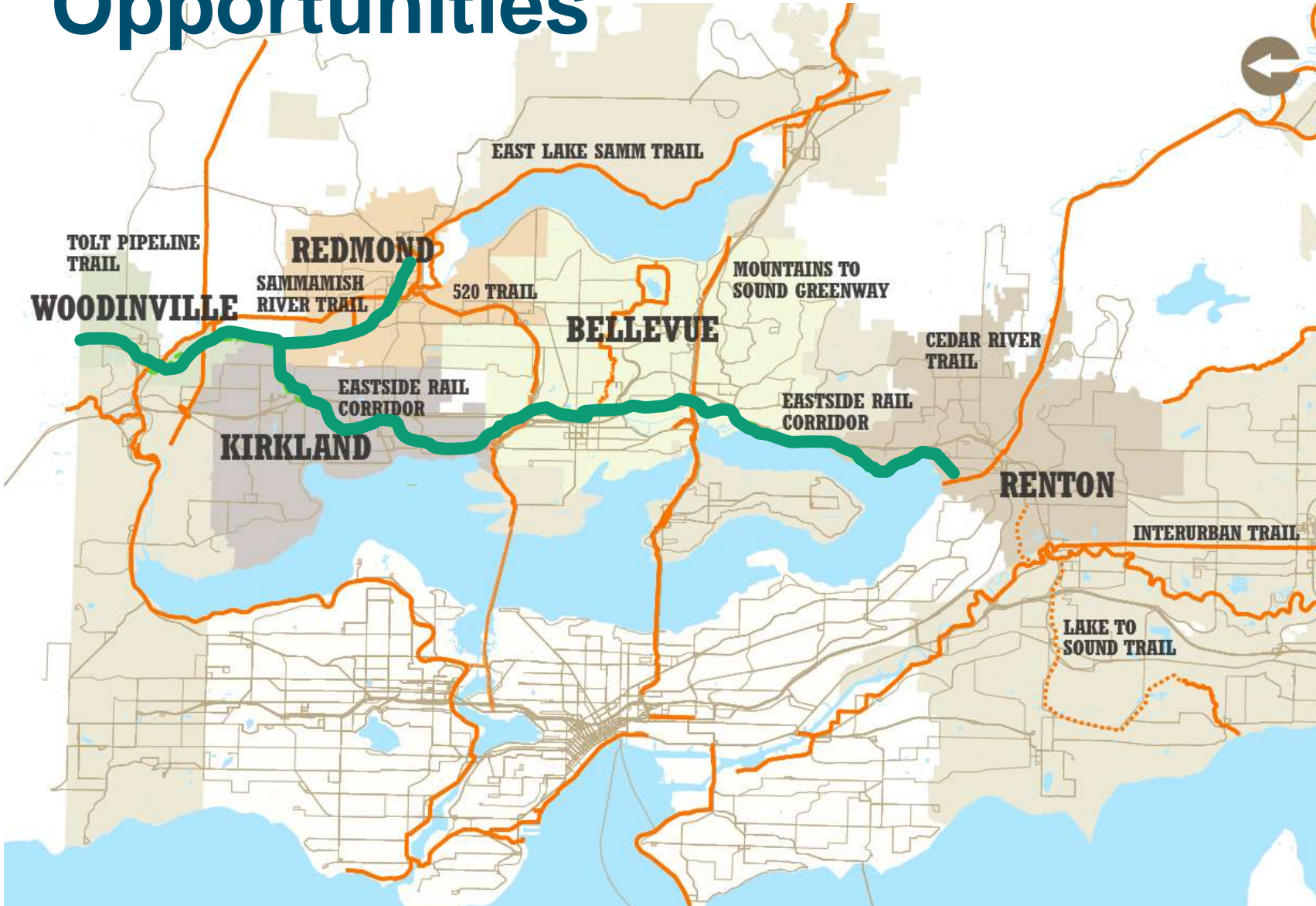
- ▶ Meydenbauer Bay/Wilburton/Richards Valley/
Weowna Park/Lake Sammamish Trail Connections



Bel-Red Parks & Greenway



Eastside Rail Corridor & Greenway Opportunities



Meydenbauer Bay to Wilburton Connection



To Meydenbauer Bay

Pedestrian Corridor

**Connection to
Regional Trail**



Bellevue Byways

Highlighting Unique Experiences

Bellevue's byways are routes throughout the city where you can expect a unique experience, broadening our focus of the Right of Way system by integrating aesthetic, recreation, historical, and cultural and branding elements into specific segments.

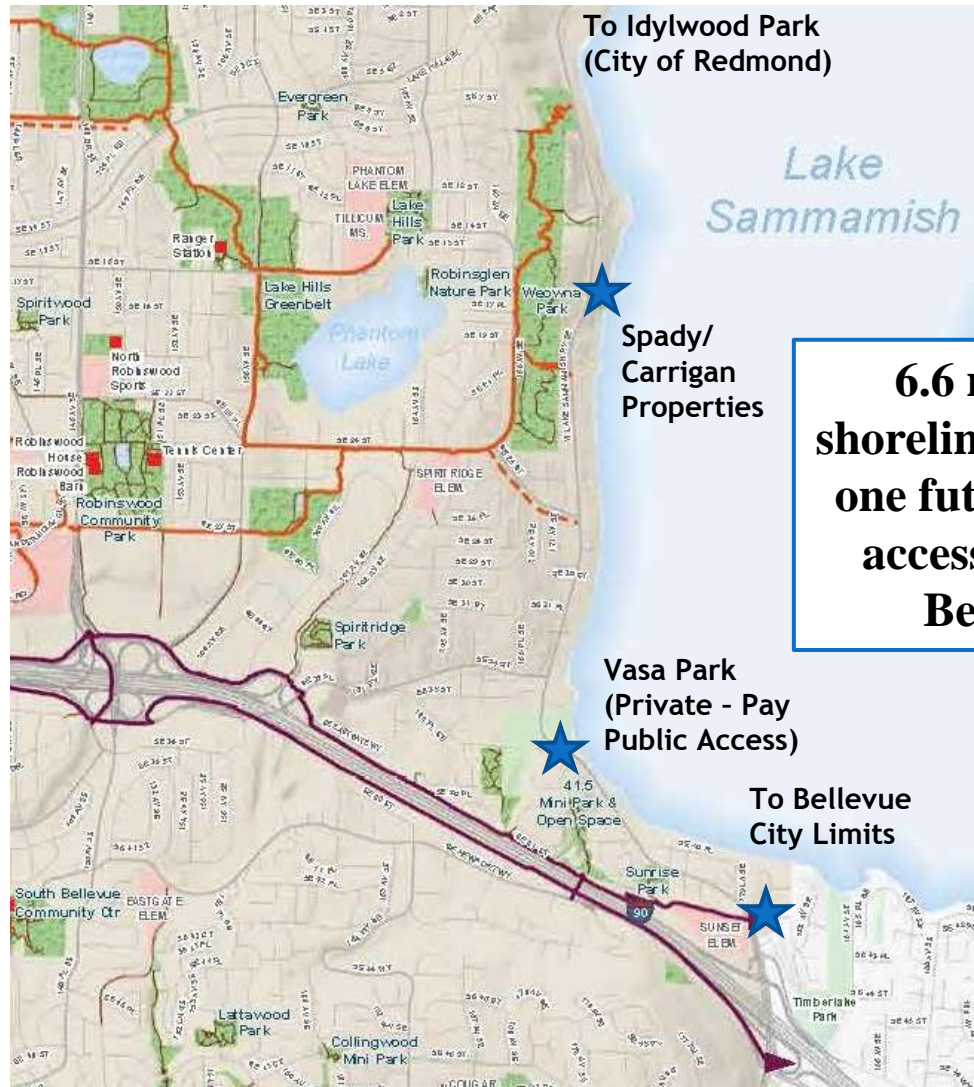
- ▶ Great Streets
- ▶ Gateways
- ▶ Neighborhood Identity
- ▶ Exceptional Streetscapes
- ▶ Arboretum
- ▶ The Changing Seasons
- ▶ Historical and Cultural
- ▶ Scenic Beauty
- ▶ Fit & Active Bellevue





West Lake Sammamish Parkway

West Lake Sammamish Neighborhood Shoreline Access & Re-Establish Neighborhood Character



6.6 miles of
shoreline with only
one future public
access point in
Bellevue

West Lake Sammamish Neighborhood Historical Recreation Uses

Lake Sammamish has a long history of recreational access to its shorelines. Over time, many, but not all, of these public access sites have converted to private use.

- ▶ Vasa Park
 - ▶ Idylwood Beach
 - ▶ Camp Sambica
 - ▶ Pickering's Gateway Grove
 - ▶ Orchard Park
 - ▶ Pete's Place
 - ▶ Shady Beach
- } Only these three remain

List & photo courtesy of Eastside Heritage Center

“Leaving Bellevue the route takes you . . . Along three miles of the scenic shore line of Lake Sammamish, noted for its fine fishing, bathing, boating, dancing and camping accommodations”



Here Is a Trip You Will Enjoy

A Trip to Beautiful Lake Sammamish

Leaving Seattle at Leschi Park for a fifteen minute ride across Lake Washington to Medina on a spacious ferry, you change to a new comfortable Motor Coach and ride through the residential district of Bellevue, on Meydenbaur Bay. Leaving Bellevue the route takes you through the strawberry and grape district of Midlakes and Highlands, then along three miles of the scenic shore line of Lake Sammamish, noted for its fine fishing, bathing, boating, dancing and camping accommodations, with plenty of comfortable cabins. The running time is 45 minutes from Leschi including ferry and bus. The fare on the bus is \$1.00 for the round trip.

Here is the schedule:—

Bus Leaves Lake Sammamish	Ferry Leaves Leschi Park, Connecting with Bus at Medina
Daily except Sundays and Holidays	
6:15 A. M.	10:40 A. M.
11:45 A. M.	6:30 P. M.
10:00 P. M.	10:30 P. M.
Sundays and holidays only.	
7:15 A. M.	10:40 A. M.
11:45 A. M.	6:00 P. M.
10:00 P. M.	10:30 P. M.

For information call Valma F. Taylor, Manager, Lakeside 119.

WITH TERMINAL AT BELLEVUE WASH.

BELLEVUE TRANSPORTATION CO.

“Furnishing passenger and express service from Medina to Lake Sammamish”

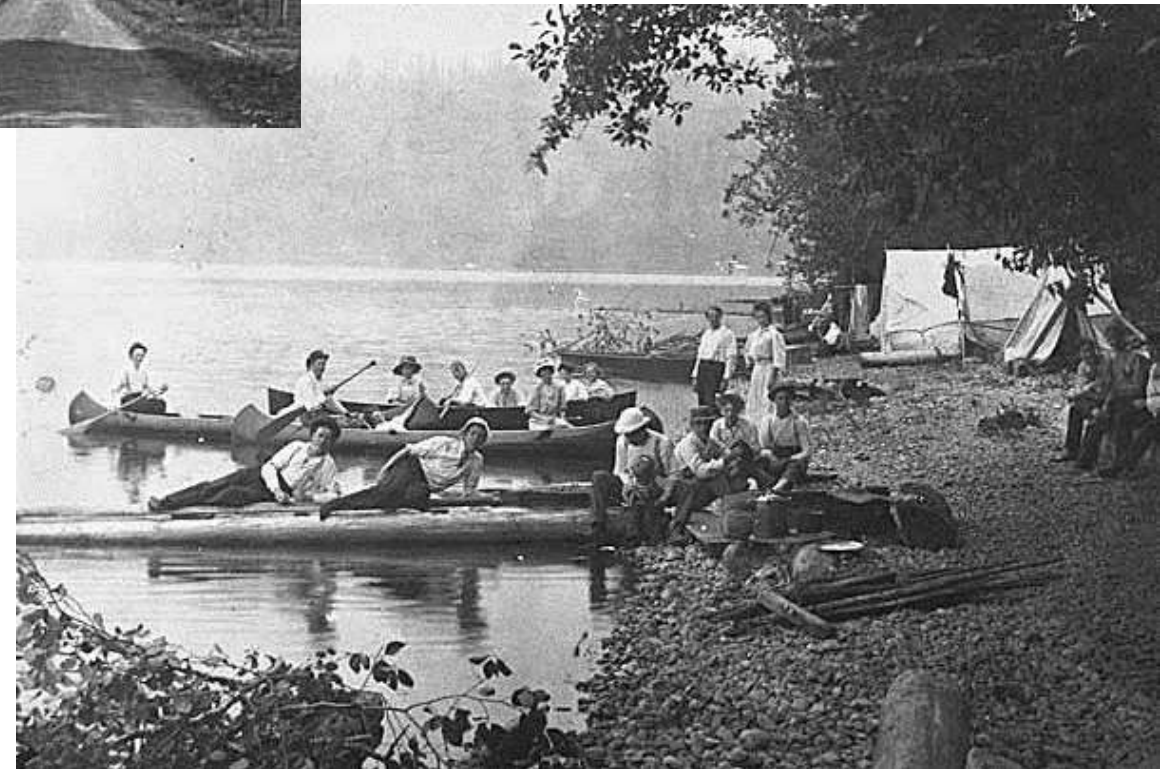
West Lake Sammamish Neighborhood Historical Parkway



From the Collections of Eastside
Heritage Center (L88.27.10)

From the Collections of Eastside
Heritage Center (ORL79.79.183)

- ▶ Parkway are broadly defined as:
 - ▶ Open and landscaped
 - ▶ Roadway in a park, or connecting to a park
 - ▶ Scenic



West Lake Sammamish Neighborhood Parkway Improvements



Moving Forward

Near-term focus will target acquisition areas, including:

- ▶ Urban Park System
 - Downtown
 - Bel-Red
- ▶ Waterfront Access
 - Lake Sammamish
- ▶ Fill gaps in existing neighborhoods
- ▶ Greenways & Corridors
 - NE Entry DTP
 - Meydenbauer Bay to Wilburton Connection
 - Eastside Rail Corridor
 - Bel-Red Corridor
 - West Lake Sammamish



Questions