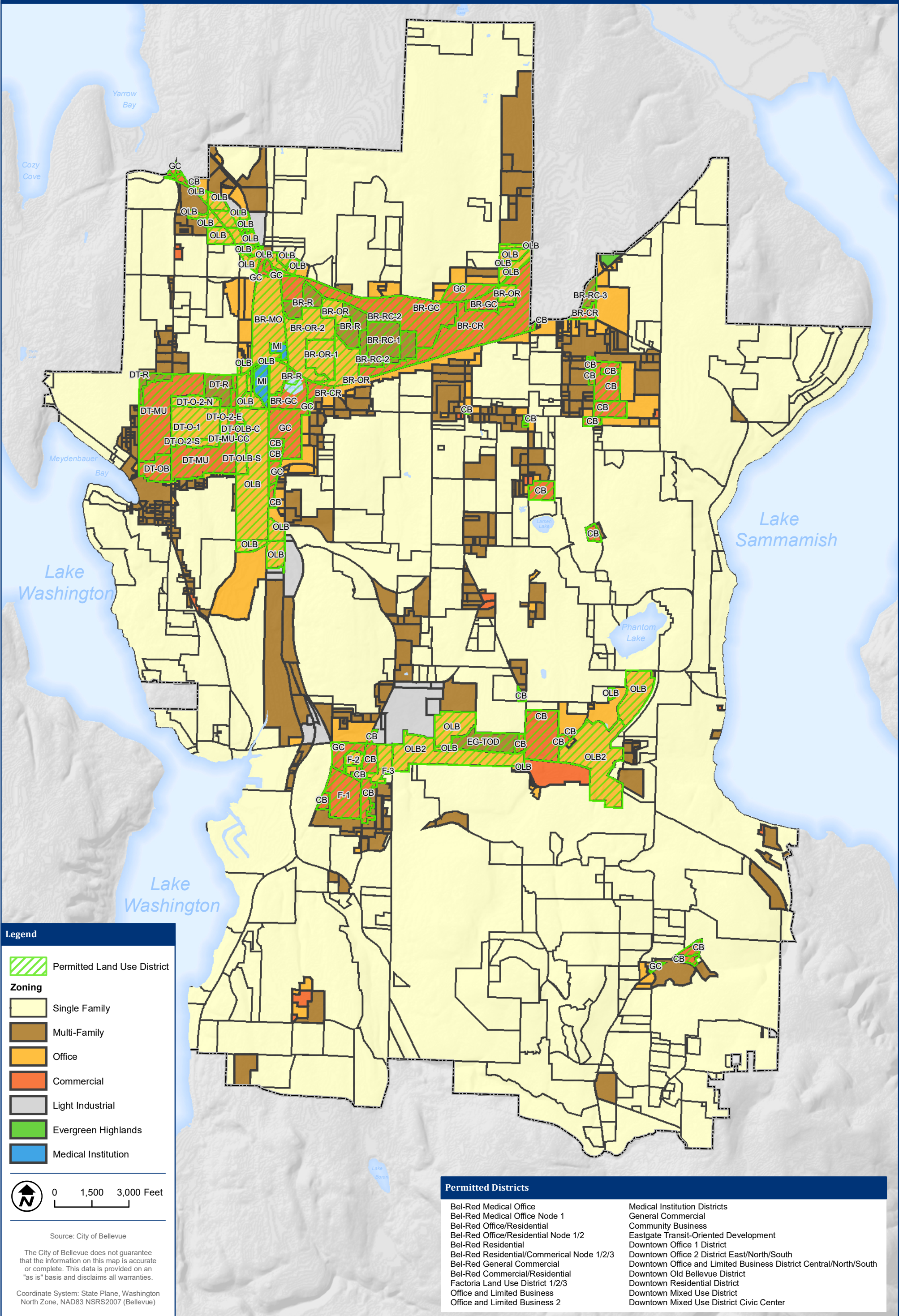


Permitted Land Use Districts

Citywide LUCA for Shelter Use



Legend

Permitted Land Use District

Zoning

- Single Family
- Multi-Family
- Office
- Commercial
- Light Industrial
- Evergreen Highlands
- Medical Institution

0 1,500 3,000 Feet

Source: City of Bellevue

The City of Bellevue does not guarantee that the information on this map is accurate or complete. This data is provided on an "as is" basis and disclaims all warranties.

Coordinate System: State Plane, Washington North Zone, NAD83 NSRS2007 (Bellevue)

Permitted Districts

| | |
|---|---|
| Bel-Red Medical Office | Medical Institution Districts |
| Bel-Red Medical Office Node 1 | General Commercial |
| Bel-Red Office/Residential | Community Business |
| Bel-Red Office/Residential Node 1/2 | Eastgate Transit-Oriented Development |
| Bel-Red Residential | Downtown Office 1 District |
| Bel-Red Residential/Commercial Node 1/2/3 | Downtown Office 2 District East/North/South |
| Bel-Red General Commercial | Downtown Office and Limited Business District Central/North/South |
| Bel-Red Commercial/Residential | Downtown Old Bellevue District |
| Factoria Land Use District 1/2/3 | Downtown Residential District |
| Office and Limited Business | Downtown Mixed Use District |
| Office and Limited Business 2 | Downtown Mixed Use District Civic Center |