

VISION ZERO BELLEVUE



TOWARD ZERO FATALITIES AND SERIOUS INJURIES ON BELLEVUE STREETS

TRANSPORTATION COMMISSION

FEBRUARY 11, 2016

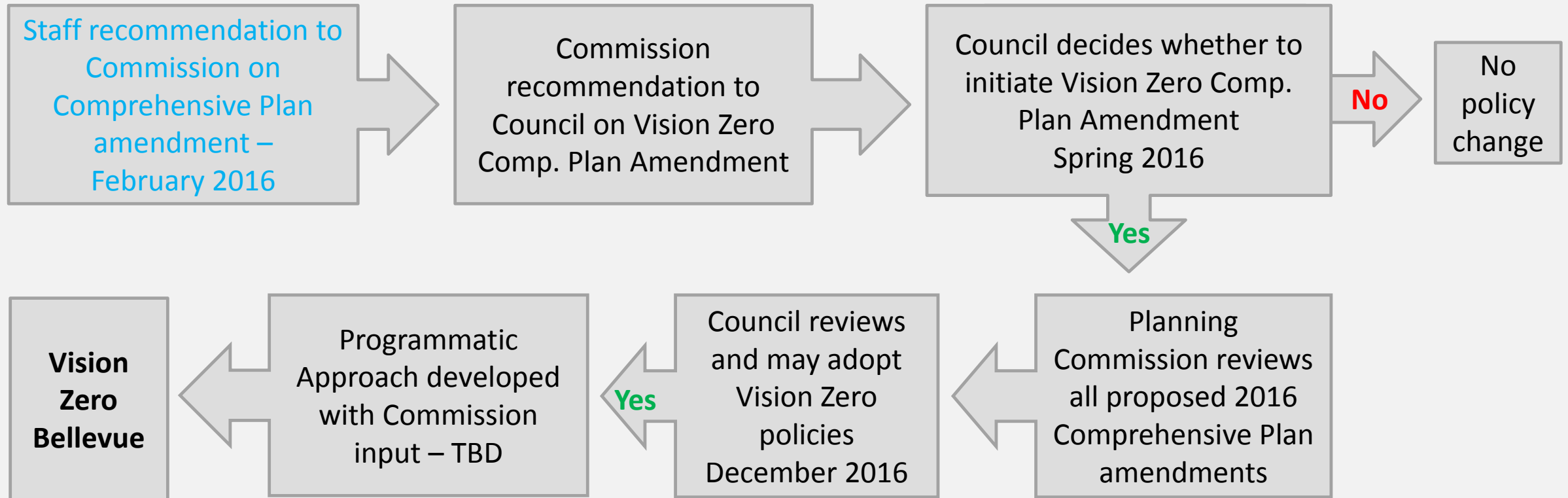
Kevin McDonald, AICP
John Murphy
Darcy Akers, EIT

VISION ZERO BELLEVUE – DISCUSSION OVERVIEW

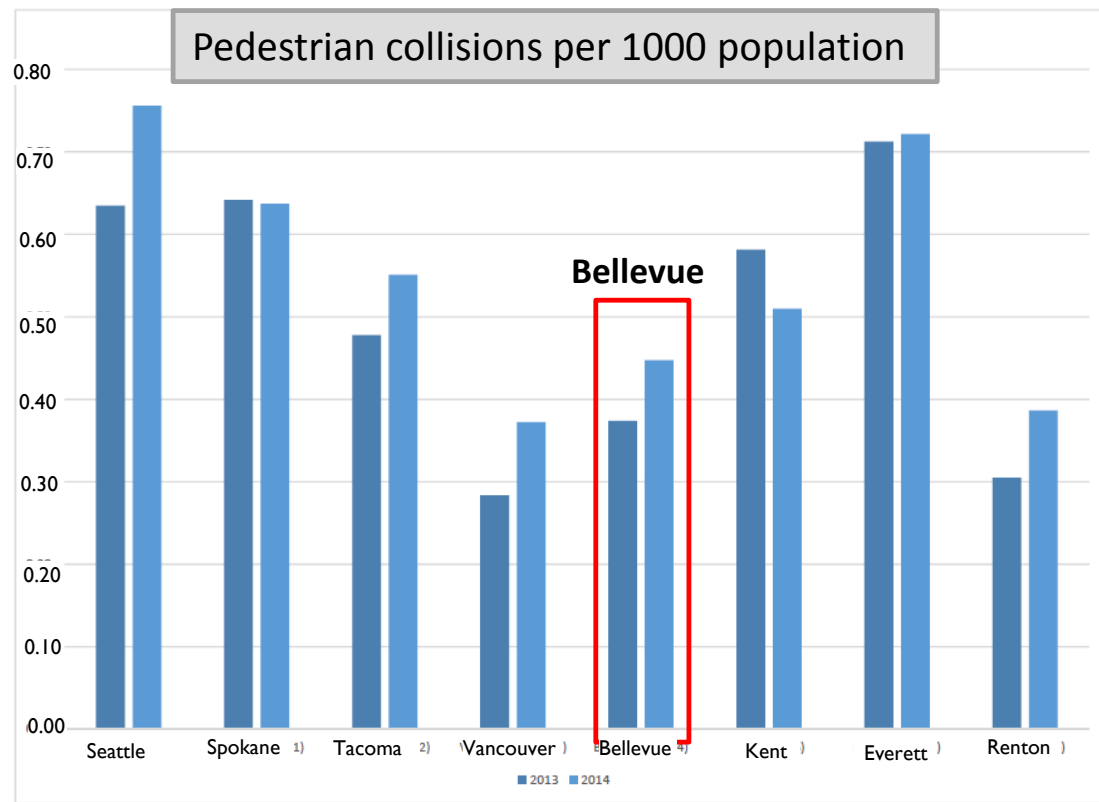
- Staff Responds to Transportation Commission Recommendation from January 14
 - Bellevue Collision Statistics
 - Evaluation Efforts
 - Vision Zero Bellevue Policies
 - Vision Zero Bellevue Programmatic Approach
- Vision Zero Policy Recommendation



PATH TO VISION ZERO BELLEVUE

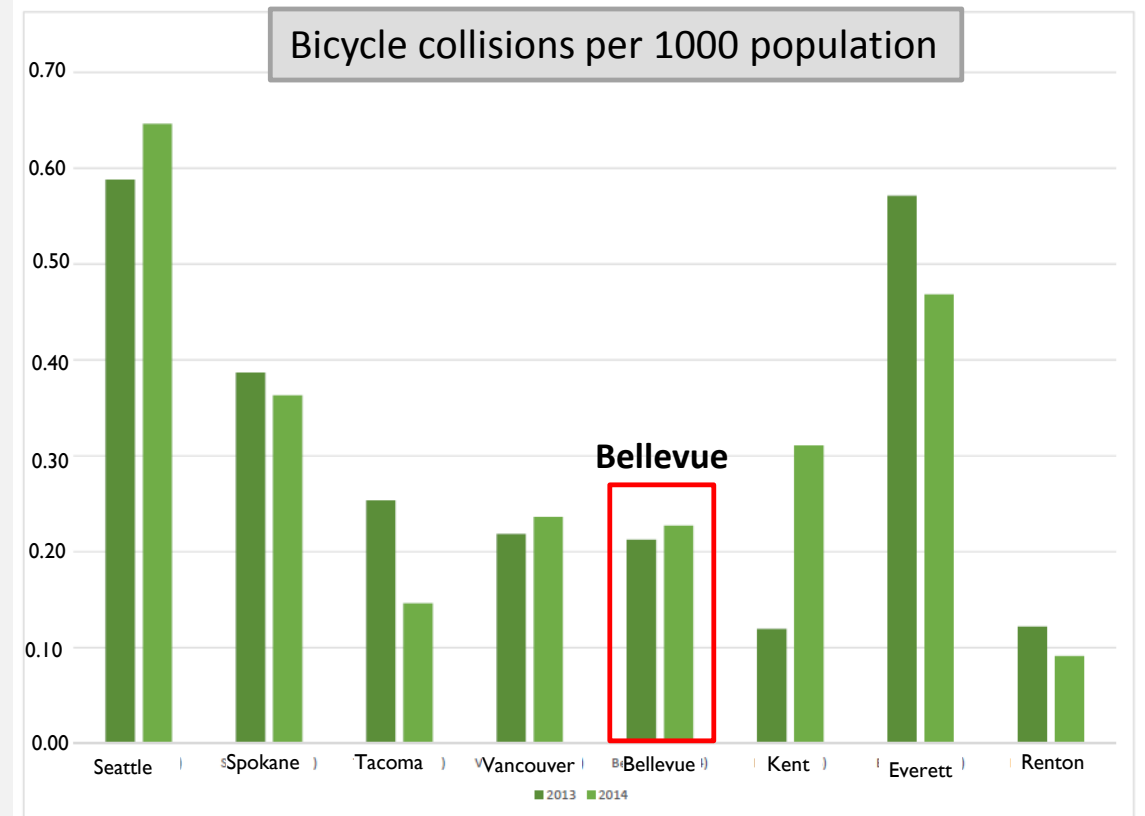


COMPARISON OF COLLISION RATES



Collision Data from <https://remoteapps.wsdot.wa.gov/crashdataportal>
 (Population Data) shown in 1000s from <http://www.citypopulation.de/USA-Washington.html>

10/21/2015

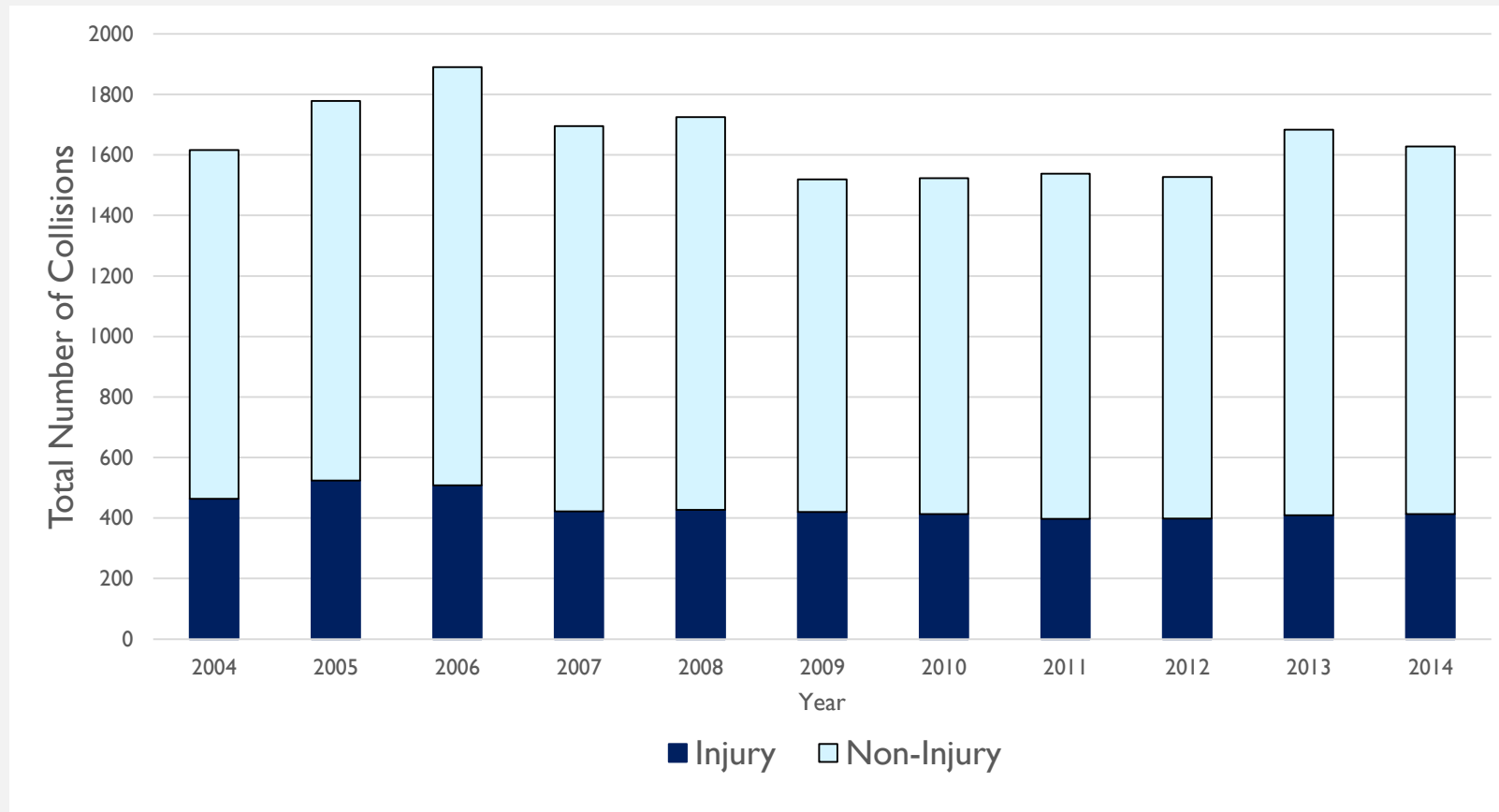


Collision Data from <https://remoteapps.wsdot.wa.gov/crashdataportal>
 (Population Data) shown in 1000s from <http://www.citypopulation.de/USA-Washington.html>

10/21/2015

Comparison of the rate of pedestrian and bicycle collisions per 1000 population for 2013 and 2014

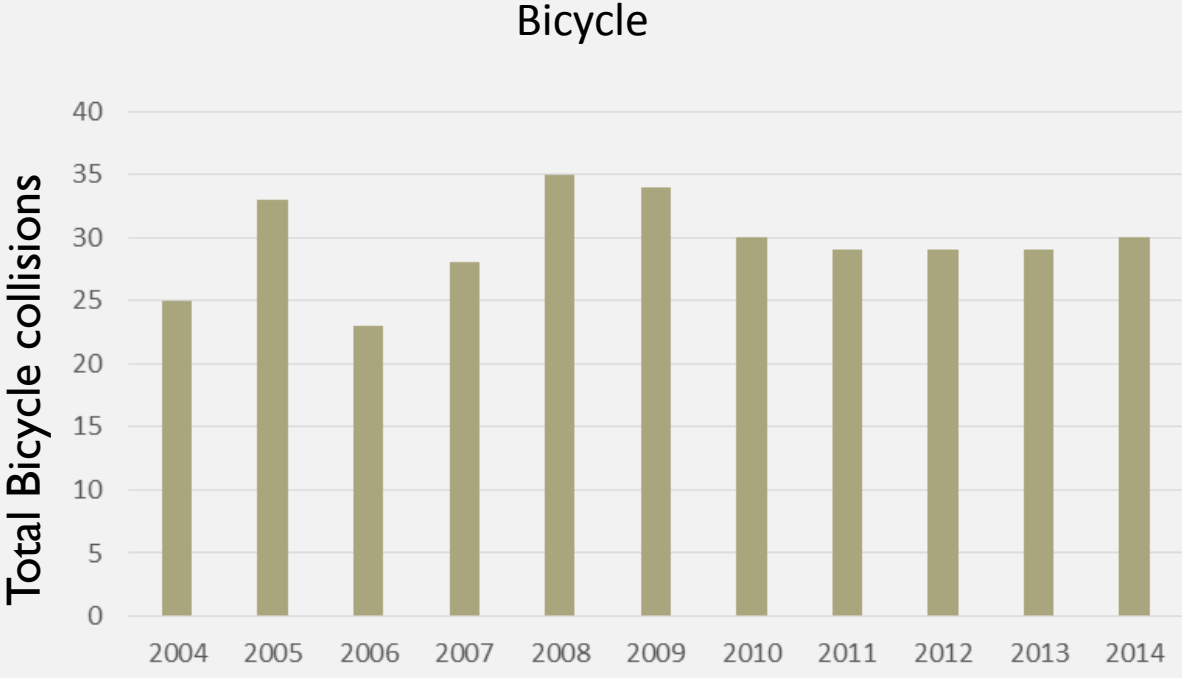
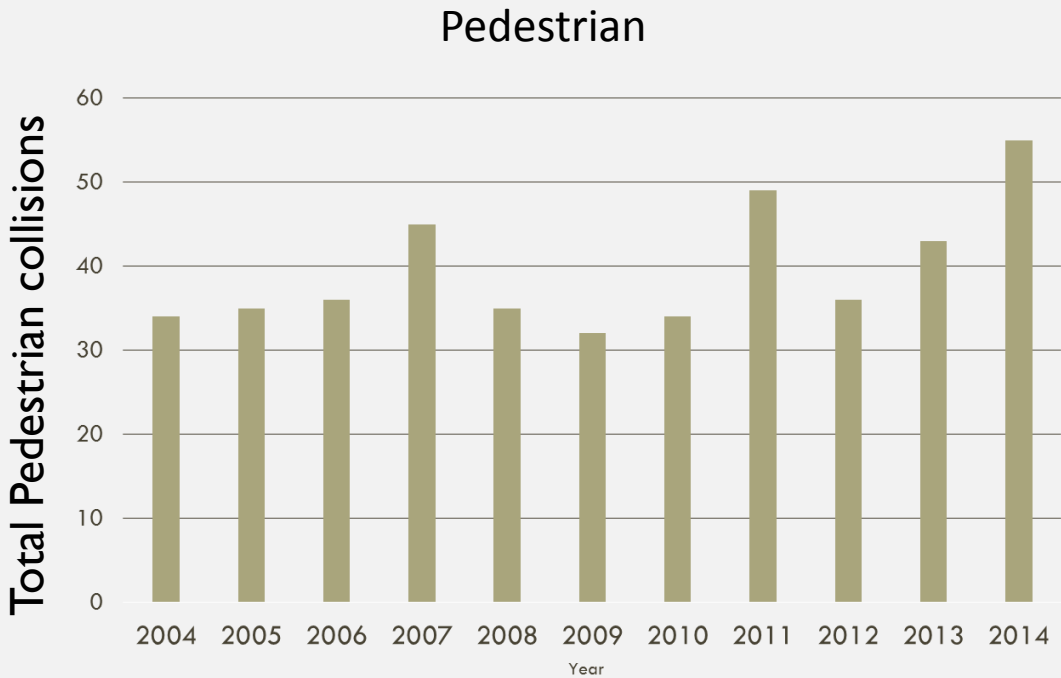
TOTAL COLLISIONS IN BELLEVUE



**includes pedestrians, bicycles, and cars*

Source: City of Bellevue Accident Database

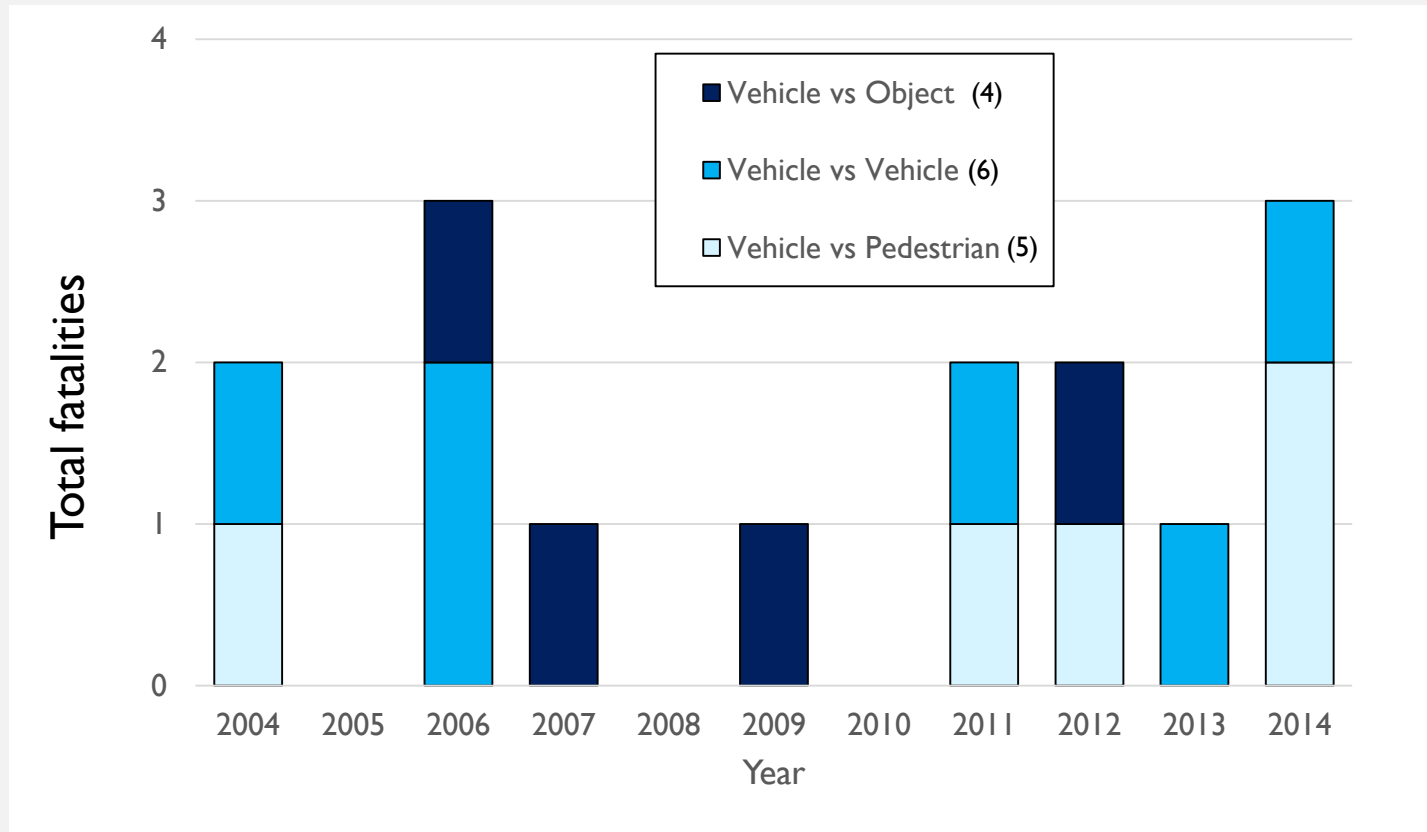
PEDESTRIAN AND BICYCLE COLLISIONS IN BELLEVUE



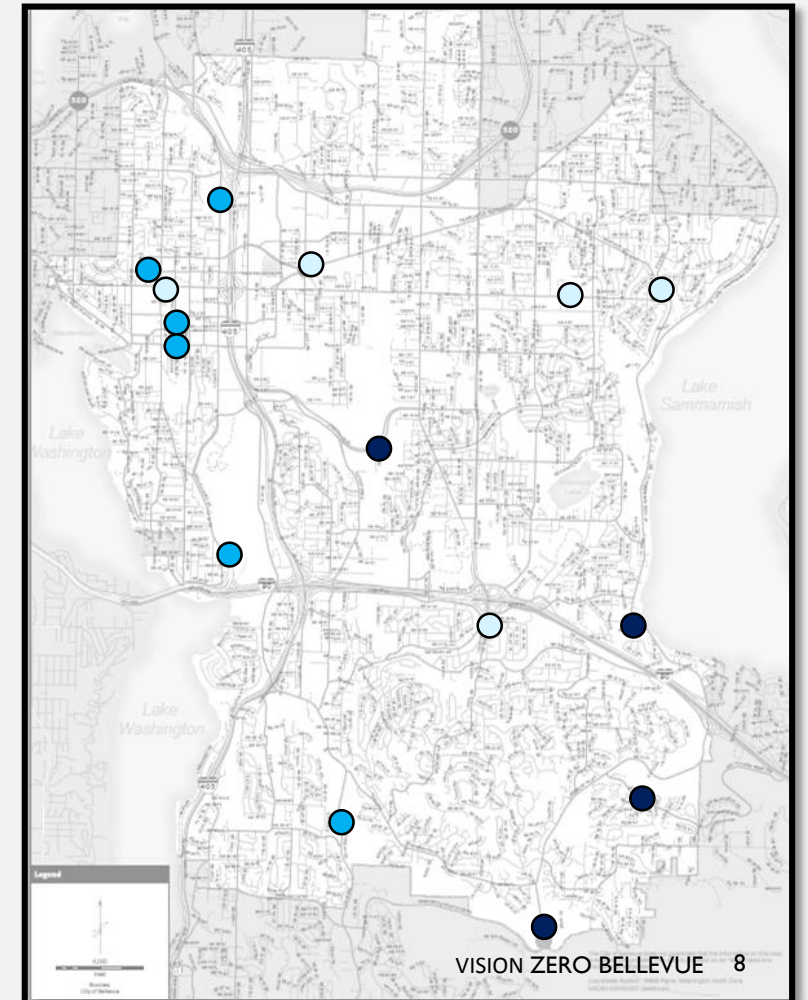
Roughly 95% of reported pedestrian and bicycle collisions result in injury

Source: City of Bellevue Accident Database

TOTAL TRAFFIC FATALITIES IN BELLEVUE



Source: City of Bellevue Accident Database



BELLEVUE EVALUATION EFFORTS

Current Evaluation Efforts

- Accident Reduction Program
 - City-wide high accident locations
 - Spot improvements – before and after

New Evaluation Efforts

- Pedestrian and Bicycle Implementation Initiative
 - Aggregated pedestrian and bicycle data

Areas to Expand Evaluation Efforts

- Geospatial maps
- Database of contributing factors – causation, lighting conditions, age, etc.
- Near miss occurrences
- Community expressed safety concerns

VISION ZERO PROGRAMMATIC APPROACH

Typical Programmatic Approach Elements

- Establish an **ongoing Vision Zero task** force that includes interdepartmental representatives as well as community stakeholders
- Prepare and implement a **Vision Zero action plan** that incorporates the 6 Es and includes a clear purpose, outcomes, action items and performance measures
- Update Vision Zero strategies periodically
- Provide **annual Vision Zero status reports** that document efforts and communicate progress to the City Council and to the general public



VISION ZERO POLICIES

Transportation Element - Integrate Vision Zero

- New Vision Zero narrative and “What is Vision Zero” callout box
- Vision Zero policy amendments that are integrated in Transportation Element
 - Roadways Chapter
 - Pedestrian and Bicycle Transportation Chapter

WHAT IS VISION ZERO?

Vision Zero is a global approach to traffic safety that has the ultimate goal of ending traffic deaths and serious injuries. It is a framework for a multi-faceted approach – locally crafted - to creating a safe transportation system for all users. Components of a Vision Zero programmatic approach to safety include several categories of actions: Education; Encouragement; Enforcement; Engineering; Equity; and Evaluation.

STAFF RECOMMENDATION

New Policies to Roadways Chapter

- **TR-A.** Strive to achieve zero traffic deaths and serious injuries on Bellevue streets by 2030.
- **TR-B.** Develop a programmatic approach to Vision Zero that integrates components of Education; Encouragement, Enforcement; Engineering; Equity; and Evaluation.
- **TR-C.** Design and manage streets to foster safe and context-appropriate behavior of all roadway users.

Amendments to Roadways Policies

- **Roadways - Policies that address design and management of the city's street system to meet community mobility needs and safety expectations.**
- **TR-53.** Maintain and enhance safety for all users of the roadway network, regardless of demographics and geography.
- **TR-55.** Maintain a collision reduction program to identify high collision locations, evaluate and prioritize potential safety improvements and implement recommended changes.

STAFF RECOMMENDATION

New Policies to Pedestrian and Bicycle Transportation Chapter

- **TR-D.** Strive to provide separation, as feasible, reasonable and appropriate to the context, between moving vehicles and vulnerable pedestrians and bicyclists

Amendments to Pedestrian and Bicycle Transportation Policies

- **Pedestrian and Bicycle Transportation -** *Policies that address increasing the opportunities to provide people with safe, comfortable, [protected](#) and connected pedestrian and bicycle facilities in Bellevue.*
- **TR-105.** (7). Serve residents [regardless of their age or ability, especially those](#) who have special accessibility needs.

COMMISSION RECOMMENDATION

Transportation Commission Recommends:

- Draft policy language (staff recommendation)
- Draft policy language (with Commission revisions)



VISION ZERO BELLEVUE TIMELINE

Next Steps

- ❑ Commission communicates Vision Zero policy recommendation to Council
- ❑ Council may initiate Vision Zero Comprehensive Plan amendment
- ❑ Planning Commission reviews all proposed 2016 Comprehensive Plan amendments
- ❑ Planning Commission makes recommendation to City Council
- ❑ Vision Zero policies may be adopted in December 2016
- ❑ Future Implementation – Programmatic Approach

VISION ZERO BELLEVUE



TOWARD ZERO FATALITIES AND SERIOUS INJURIES ON BELLEVUE STREETS

TRANSPORTATION COMMISSION

FEBRUARY 11, 2016

Kevin McDonald, AICP
John Murphy
Darcy Akers, EIT