



Draft Environmental Stewardship Plan

Online Townhall

Jennifer Ewing, Environmental Stewardship Program Manager

Ana McMahon, Resources Conservation Manager

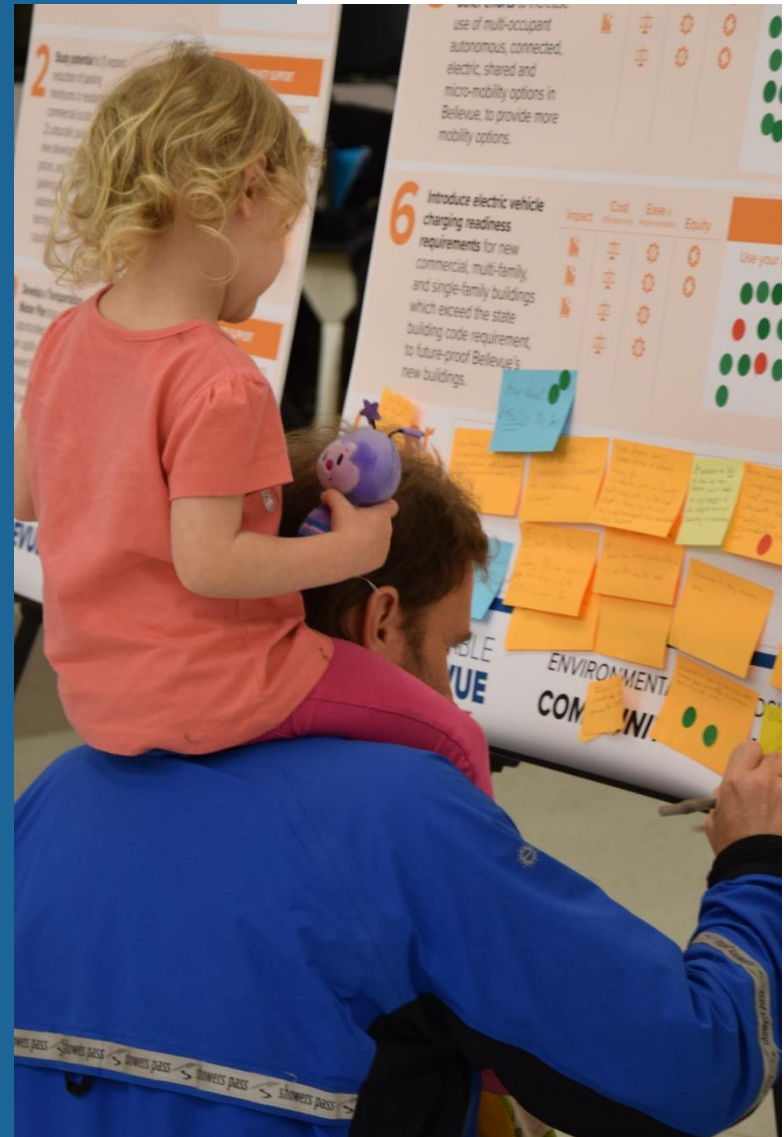
Brooke Brod, Community Engagement Lead

October 1, 2020



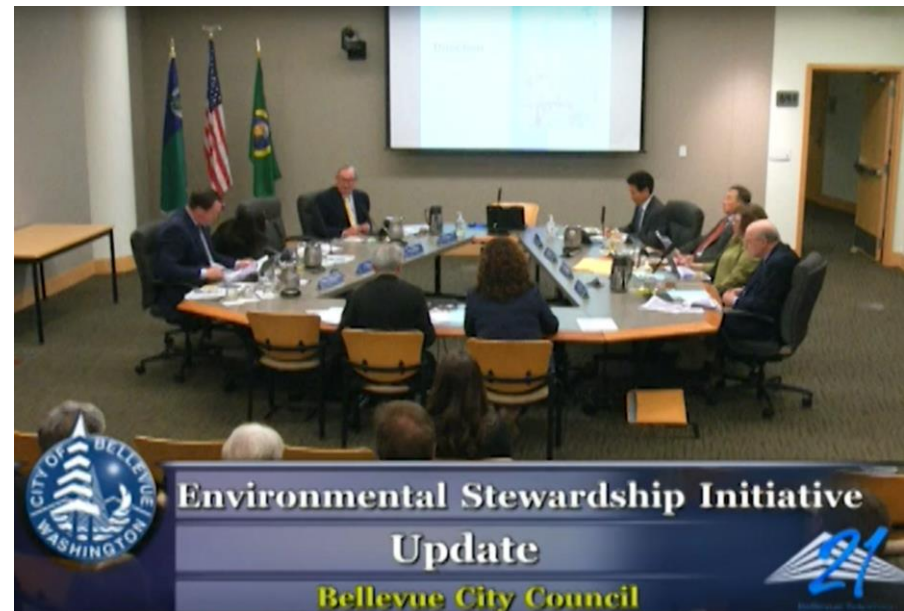
Meeting Objectives

- Update on progress
- Key Actions
- Q&A - Clarifying questions
- Discussion
 - What actions are you most excited about?
 - Level of support
 - Other considerations
- Next Steps



Council Direction

- Council Priority #11: Review progress and analyze additional steps to achieve goals
- Go “Bold“, and identify opportunities for leading edge goals and targets
- Develop nearer term targets
- Build on a foundation of success
- Lead by example through municipal operations



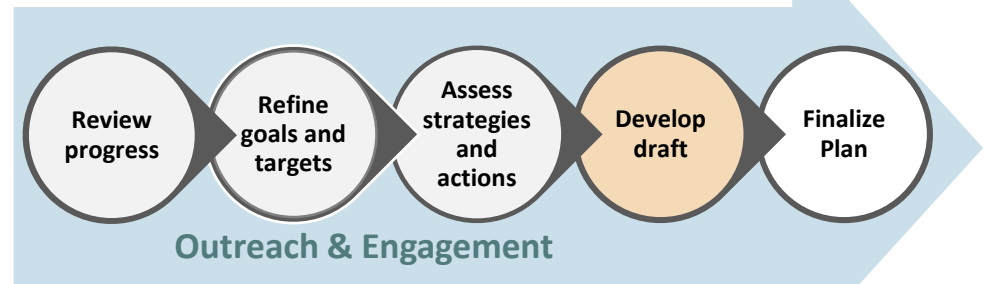
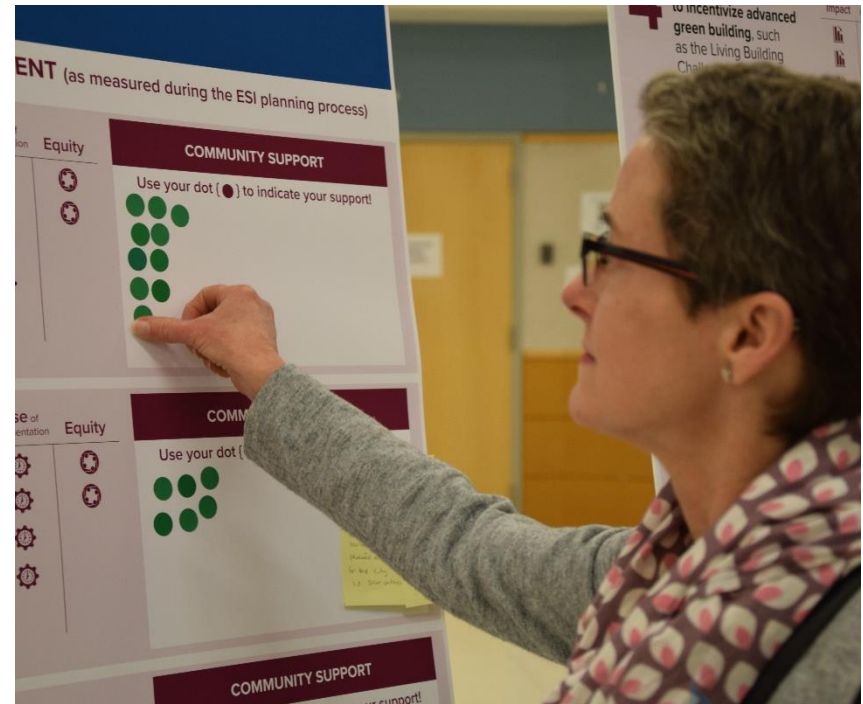
Our Process

✓ Phase 1: Goals and Targets

- Develop Recommendations for Goals and Targets
- Phase 1 Outreach
- Council Direction (11/12)

✓ Phase 2: Actions

- Phase 2 Outreach
- Online Survey – 600 respondents
- Business Focus Groups
- Analysis of actions
- Created 1st draft of plan
- Council update (9/14)



Accomplishments

The updated plan will address **five focus areas** of environmental stewardship.

 <p>CLIMATE CHANGE*</p>	 <p>ENERGY</p>	 <p>MATERIALS MANAGEMENT & WASTE</p>	 <p>MOBILITY & LAND USE</p>	 <p>NATURAL SYSTEMS</p>
---	--	---	---	---

We have already made significant progress in these areas, but more is needed.

<p>6.4% reduction in community GHG emissions</p> 	<p>88% increase in voluntary renewable energy purchases through PSE 432 solar arrays installed</p>	<p>40% of waste is composted or recycled</p> <p>21 schools took part in America Recycles Day</p>	<p>2% Electric Vehicle (EV) ownership</p> <p>35.8 miles of new bike facilities have been built</p>	<p>37% of the city is covered by tree canopy</p> <p>73% of residents live within a 1/3 mile of a park</p>
---	--	--	--	---

**Please note that the Climate Change focus area is interdependent with other focus areas.*

Environmental Stewardship Plan Goals



SUSTAINABLE
BELLEVUE
ENVIRONMENTAL STEWARDSHIP PLAN



MATERIALS MANAGEMENT & WASTE

Reduce the negative impacts from consumption and waste practices and strive towards zero waste of resources.



MOBILITY & LAND USE

Minimize the environmental impacts of transportation and development in Bellevue by focusing development in growth centers and providing all residents with access to a variety of mobility options.



ENERGY

Ensure long-term access to clean energy while reducing the fiscal and environmental impacts of consumption



NATURAL SYSTEMS

Improve and preserve the integrity and health of Bellevue's natural systems and ensure all of Bellevue's residents have access to Bellevue's abundant natural resources.



CLIMATE CHANGE






Reduce overall greenhouse gas emissions.



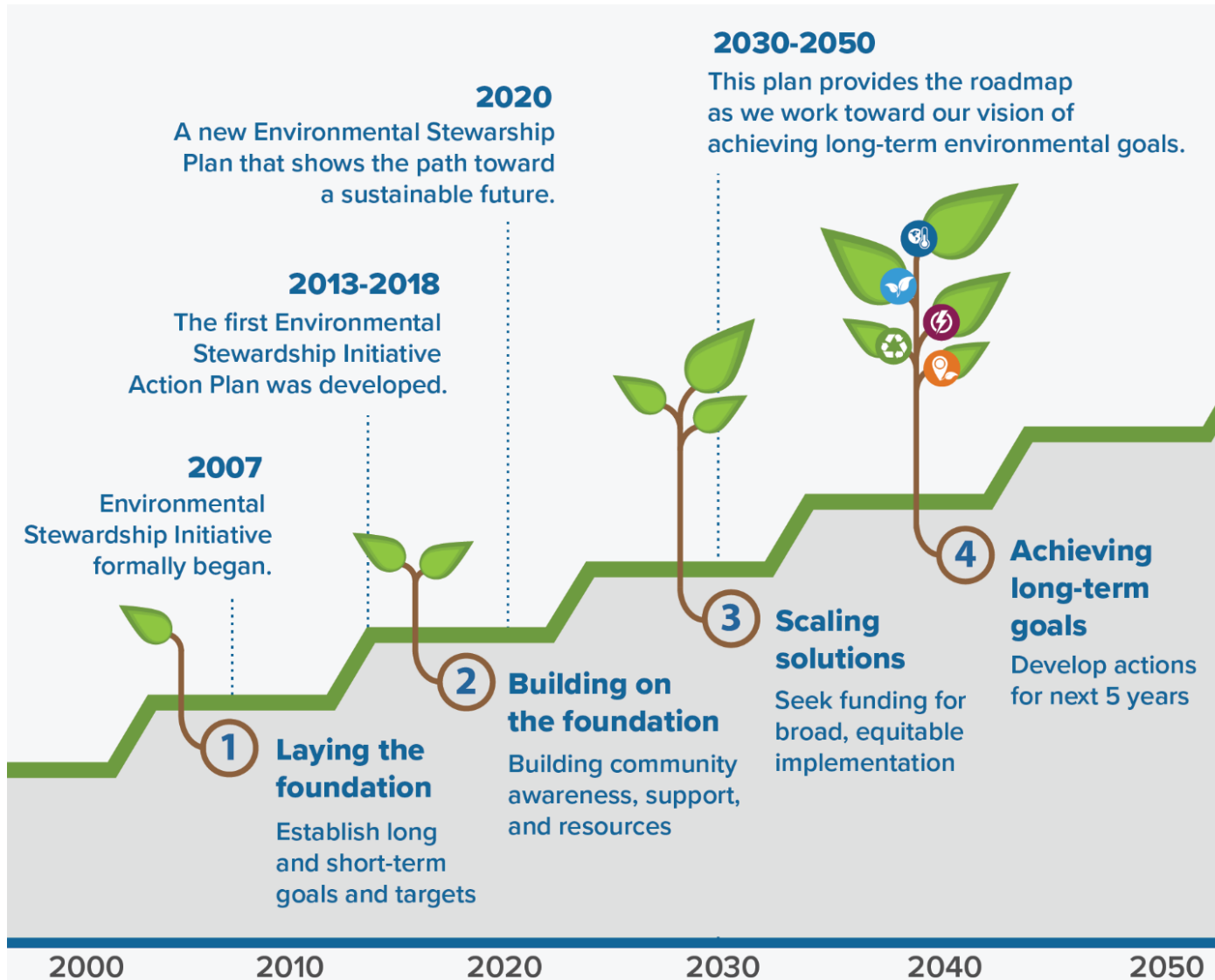
MUNICIPAL OPERATIONS

The City will lead by example.

Communitywide Targets

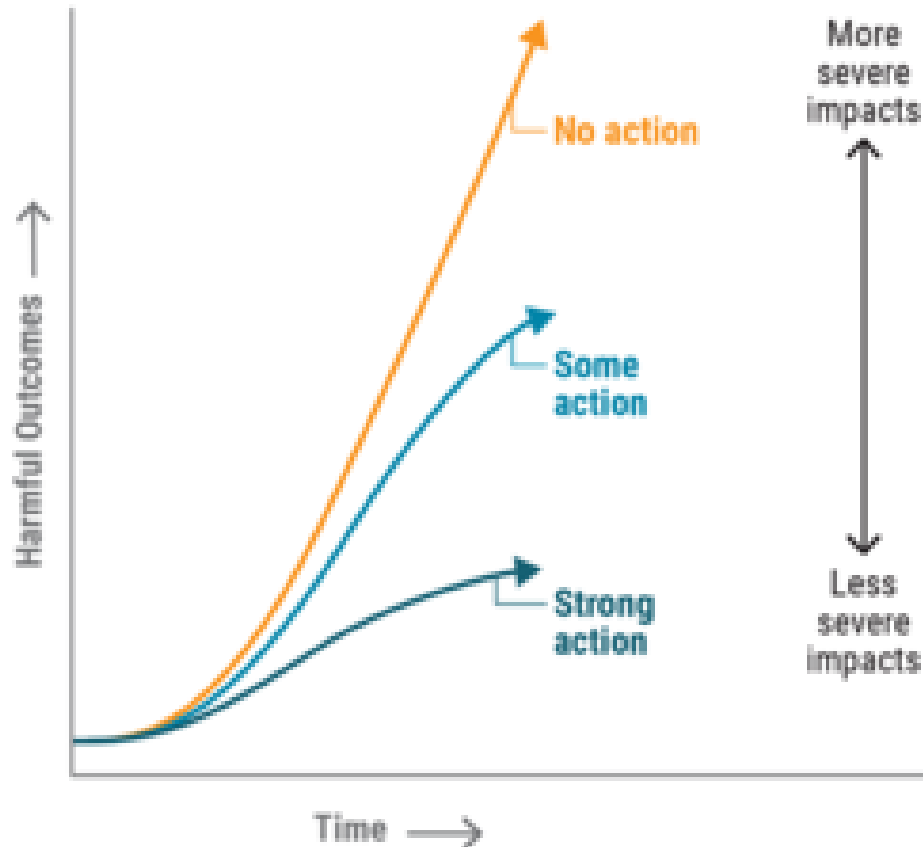
		2030	2050	
	MATERIALS MANAGEMENT & WASTE	50%	90%	Recycling Rate (or Zero-Waste)
	MOBILITY & LAND USE	65%	45%	Drive Alone Rate
		25%	100%	Electric Vehicles
		20%	50%	VMT/Capita Reduction
		75%/50%	85%/65%	% of Jobs % Housing } Within ¼ mile of freq. transit station
	ENERGY	75%	100%	Renewable Energy
		10%	30%	Energy Use Reduction
	NATURAL SYSTEMS	38%	40%	Tree Canopy Cover
		80%	100%	1/3 mile to Park Access
		TBD	TBD	Healthy Streams*
	CLIMATE CHANGE	50%	80%	Greenhouse Gas Reduction

Framework for the Plan



COVID and Climate Change

Flattening the Curve on Climate

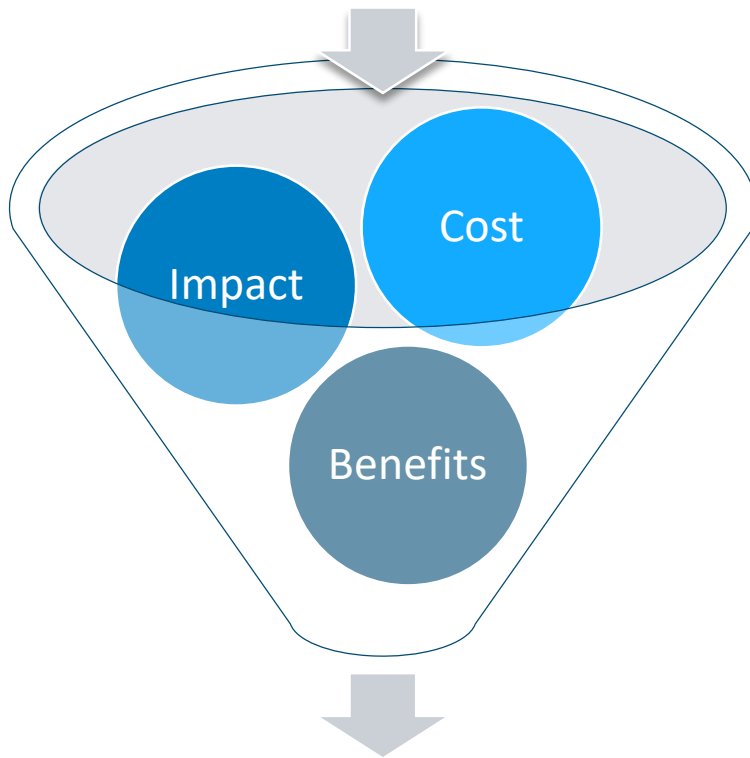


Economic Recovery and Sustainability

- Prioritizing strategies which reduce costs for residents and businesses
- Support job growth
- Consider economic recovery timing in implementation planning for Environmental Stewardship Plan
- Incorporating sustainability into economic recovery

Action Development

Potential Actions



Short-list of Actions

- **Policies**
- **Programs**
- **Projects**

Climate Change



Our goal

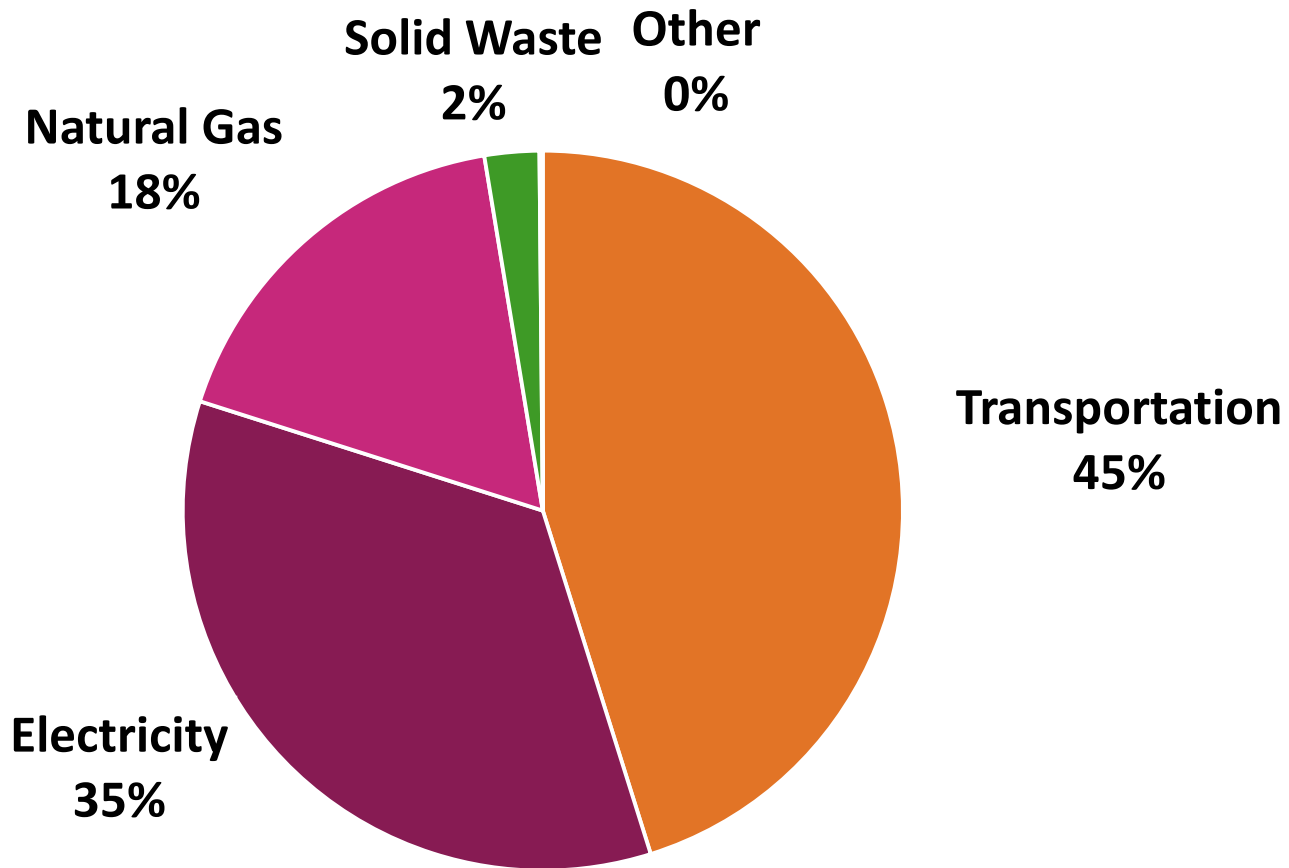
Our goal is to reduce Bellevue's greenhouse gas (GHG) emissions and prepare and adapt to ongoing climate change impacts.

2050 target

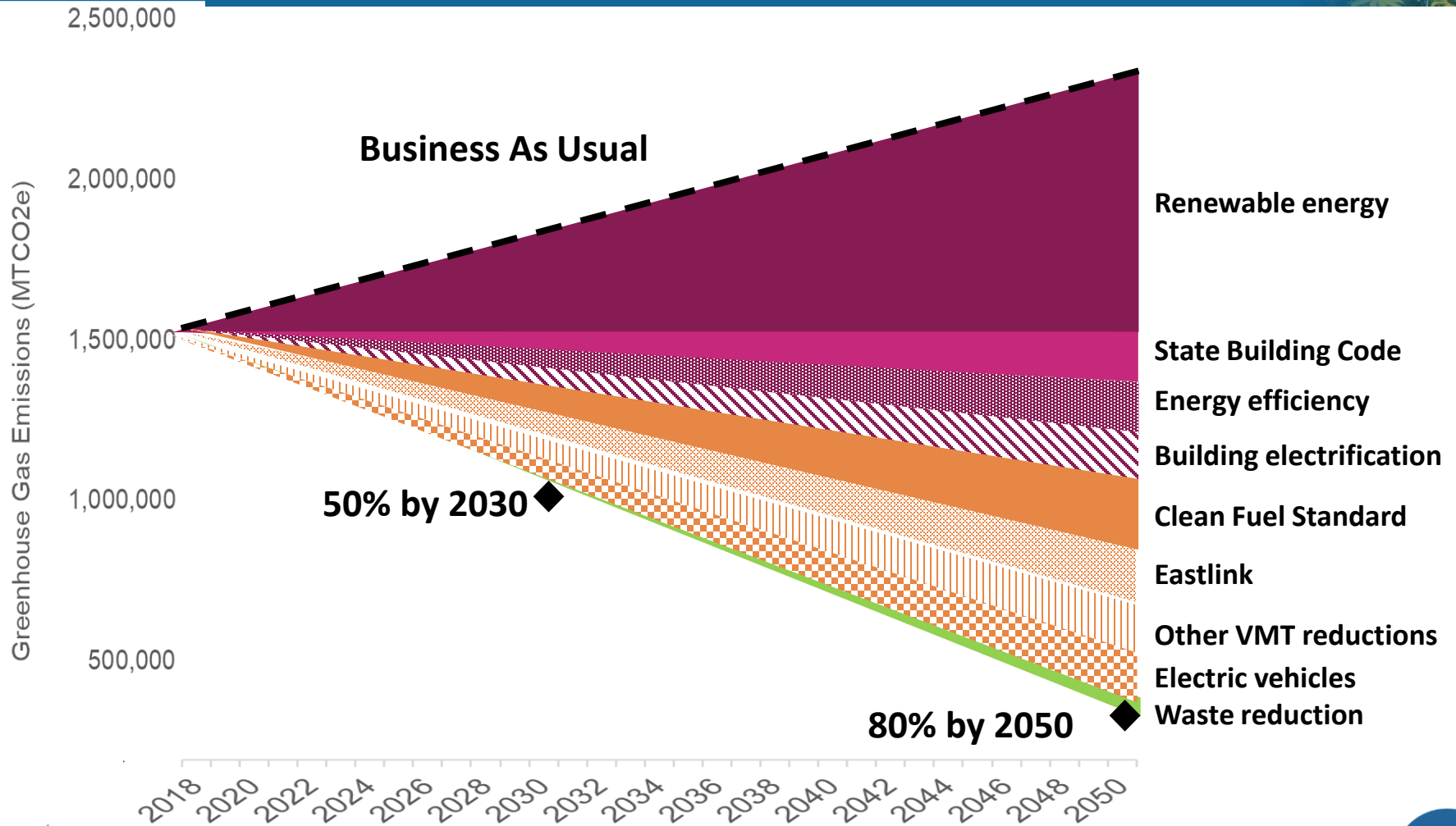
 80% greenhouse gas reduction

Climate Change

2018 GHG Emissions (MTCO₂e)



Climate Change



Note: Graph based on analysis performed by Cascadia Consulting for illustrative purposes.





Q&A



Climate Change

Action Highlights



Air quality
monitoring and code
considerations



Regional
collaboration
through K4C



State advocacy

Planning and Policy

- Assess impacts of climate
- Comprehensive Plan update
climate considerations

Outreach & Education

- Develop Climate Change outreach
program



Energy



Our goal

Our goal is to ensure long-term access to clean energy while saving money and reducing environmental impacts of energy consumption.

2050 targets



100% renewable energy



30% energy use reduction



Energy



Action Highlights



Home Energy
Retrofits



Commercial energy
benchmarking
support



Increase onsite solar
in Bellevue

Future Planning

- Green Building Incentives
- Green Affordable Housing
- Streamlined permitting

Regional & State

- Clean Energy Transformation Act
- State Building Code



Materials & Waste



Our goal

Our goal is to reduce the negative impacts from consumption and waste practices and strive towards zero waste of resources.

2050 target



Materials & Waste



Action Highlights



Recycling space requirements



Single-use plastics



Multi-family and commercial building outreach

Future Planning

- Assess strategies for achieving zero waste goals

Outreach & Education

- Construction and demolition waste
- Food waste prevention



Natural Systems



Our goal

Our goal is to improve and preserve the integrity and health of Bellevue's natural systems and ensure all of Bellevue's residents have access to Bellevue's abundant natural resources.

2050 targets



40% tree canopy cover



100% of residents live within 1/3 mile of a park, open space, or trail



Natural Systems

Action Highlights



Plant 75,000 trees



Update tree codes



Multiple environmental
benefits for open
spaces

Future Planning

- Watershed Management Plan
- Parks & Open Space Plan

Outreach & Education

- Tree Ambassadors and Tree Tours



Mobility & Land Use



Our goal

Our goal is to minimize the environmental impacts of transportation and development in Bellevue by focusing on development in growth centers and providing all residents with access to a variety of mobility options.

2050 targets



45% drive-alone rate



100% electric vehicle (EV) ownership



50% reduction in vehicle miles traveled per capita



85% of jobs and 65% of housing within ¼ mile of frequent transit



Mobility & Land Use

Action Highlights



Mobility
Implementation Plan



EV infrastructure,
readiness, and fleets



Commute Trip
Reduction program

Future Planning

- Parking needs study
- Transportation Impact Fees

Regional & State

- Clean Fuel Standard
- Incentives for electric vehicles



MUNICIPAL OPERATIONS

GOAL

The city will be a sustainability leader.



2040 targets



80% GHG emissions reduction

35% employee drive-alone rate



100% light-duty fleet EVs

30% fleet fossil fuel reduction



100% renewable energy

50% building energy reduction



90% recycling rate = zero-waste

10% water use reduction



80% forests in healthy condition



MUNICIPAL OPERATIONS



Climate Change



Energy



Action Highlights



Sustainable operations
& projects trainings



Green building
performance standards
(new & existing)



Renewable energy
installations & power
purchases

Future Planning

- Embodied carbon tools & resources
- Building retro-commissioning and electrification retrofits

Education & Outreach

- Quarterly reporting for internal leadership
- Lessons learned from sustainability pilot programs and certification projects



MUNICIPAL OPERATIONS



Mobility



Waste & Materials



Natural Systems

Action Highlights



Municipal fleet electrification & charging stations



Local, renewable purchases & recycle C&D waste



Sustainable landscaping practices & water use

Future Planning

- Building upgrades to support EV charging
- Pilot med-heavy duty EV options
- Planning for long-term forest restoration and preservation
- Develop C&D markets

Education & Outreach

- Eco-driving trainings & benefits
- Provide resources for green purchasing policy
- Report on water use by site



Tracking Progress

New Environmental Stewardship Dashboard Coming Soon!

No issues detected × Edit ×
f t e Edit ×
SUSTAINABLE BELLEVUE

Introduction Climate Change Mobility and Land Use Energy Waste Natural Systems Leading by Example

Bellevue Environmental Stewardship f t e Edit ×

Mobility and Land Use

No issues detected ×

This decrease in VMI is likely due to employees moving closer to their jobs, working remotely or taking alternative types of transportation.

Drive Alone Rate

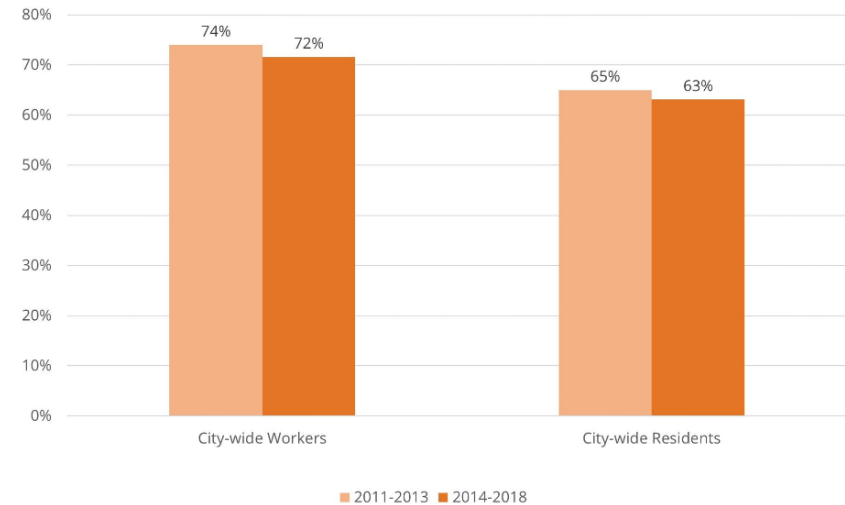
The City of Bellevue encourages employers to reduce their employees' rate of driving alone to work through the Commute Trip Reduction program. Between 2011 and 2018, the city-wide drive-alone rate decreased by 2 percent. Data is sourced from the U.S. Census Bureau American Community Survey using 3 or 5-year averages.

⊕

Electric Vehicles

Bellevue has one of the highest adoption rates of electric vehicles (EV) per capita in the U.S. Since 2012, the number of EV and plug-in hybrid EV registrations grew by 69 percent on average per year. This growth is projected to continue as EVs become more affordable and charging infrastructure becomes more available throughout the city.

City-wide Drive Alone Rate



Category	2011-2013	2014-2018
City-wide Workers	74%	72%
City-wide Residents	65%	63%

■ 2011-2013 ■ 2014-2018



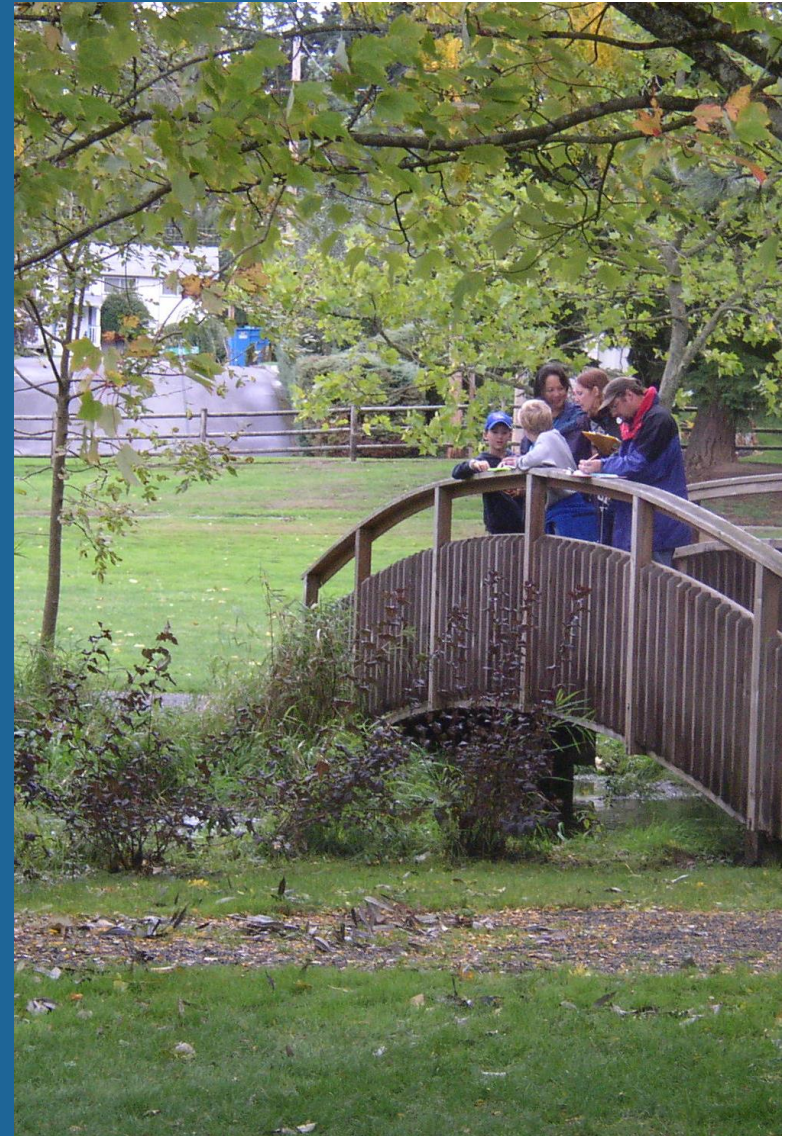
Q&A





Small Group Discussion

- What actions are you most excited about?
- What are some challenges and opportunities for implementation?



How to Get Involved

Support the Plan Completion:

- Review the full plan or summary
- Take the survey and comment at [EngagingBellevue.com](https://www.EngagingBellevue.com)
- Engage in the budget process

Plan Implementation:

- New partnerships for tree planting
- Climate education and outreach
- And more!

Next Steps

- Review and summarize feedback
- Finalize draft plan
- Draft plan review with Council (11/16)
- Adoption of final plan (12/14- tentative)



Thank You

**Tell Us What You Think:
EngagingBellevue.com**

**Learn More:
Bellevuewa.gov/environment**

Jennifer Ewing, jewing@bellevuewa.gov

Ana McMahon, amcmahon@bellevuewa.gov

Brooke Brod, bbrod@bellevuewa.gov

