



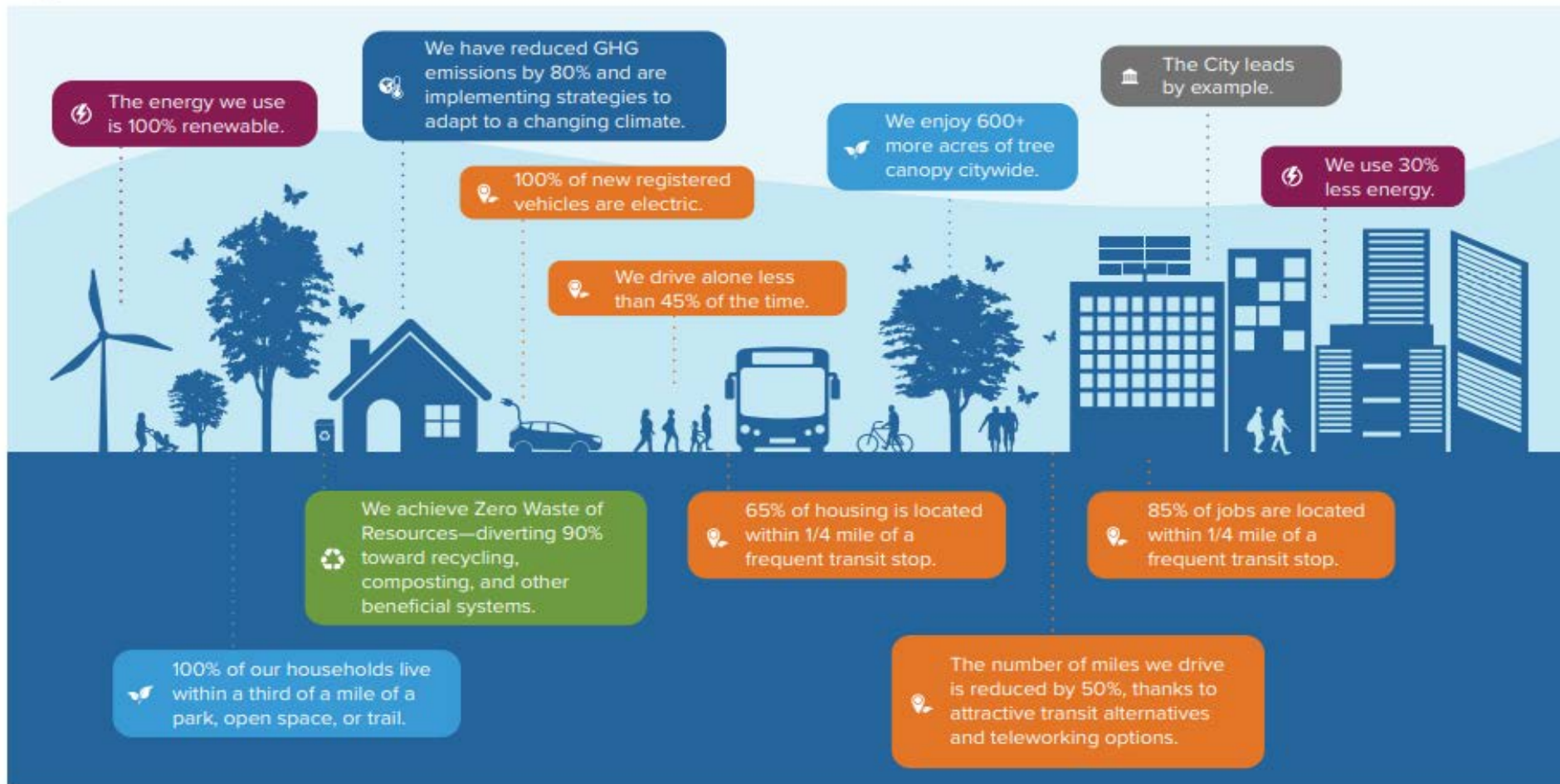
Sustainable Bellevue

Annual Performance Update

Jennifer Ewing | Community
Development
July 14, 2022

Sustainable Bellevue Plan Goals

By 2050...



Plan At A Glance

- 5 Focus Areas
- 78 Actions over 5 years
- Short and Long-Term Targets:
 - 2030 and 2050 for Community
 - 2030 and 2040 City Ops
- Implementation table with lead department, and implementation timeframe
- Monitoring and Evaluation approach
- Long-term actions to consider



Energy		Goal: Ensure long-term impacts of consumption	
KPI	Progress	Targets	
Renewable energy source (% renewable energy)	45% 2019	80% by 2030 100% by 2045	
Energy consumption (% reduction in energy use)	5% ↑ since 2011	15% by 2030 30% by 2050	

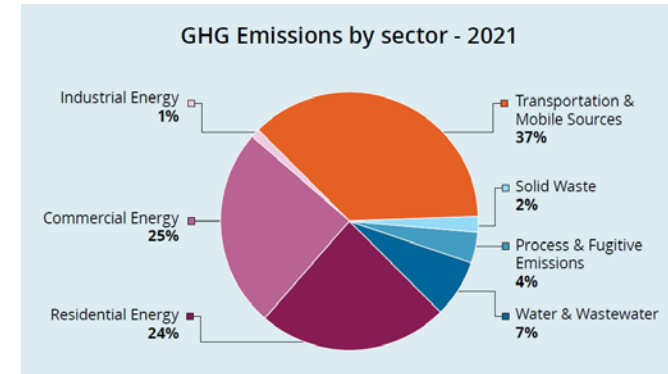
COMMUNITY ACTIONS

🏠 = equity
💰 = cost
🏢 = impact
🌱 = cost savings

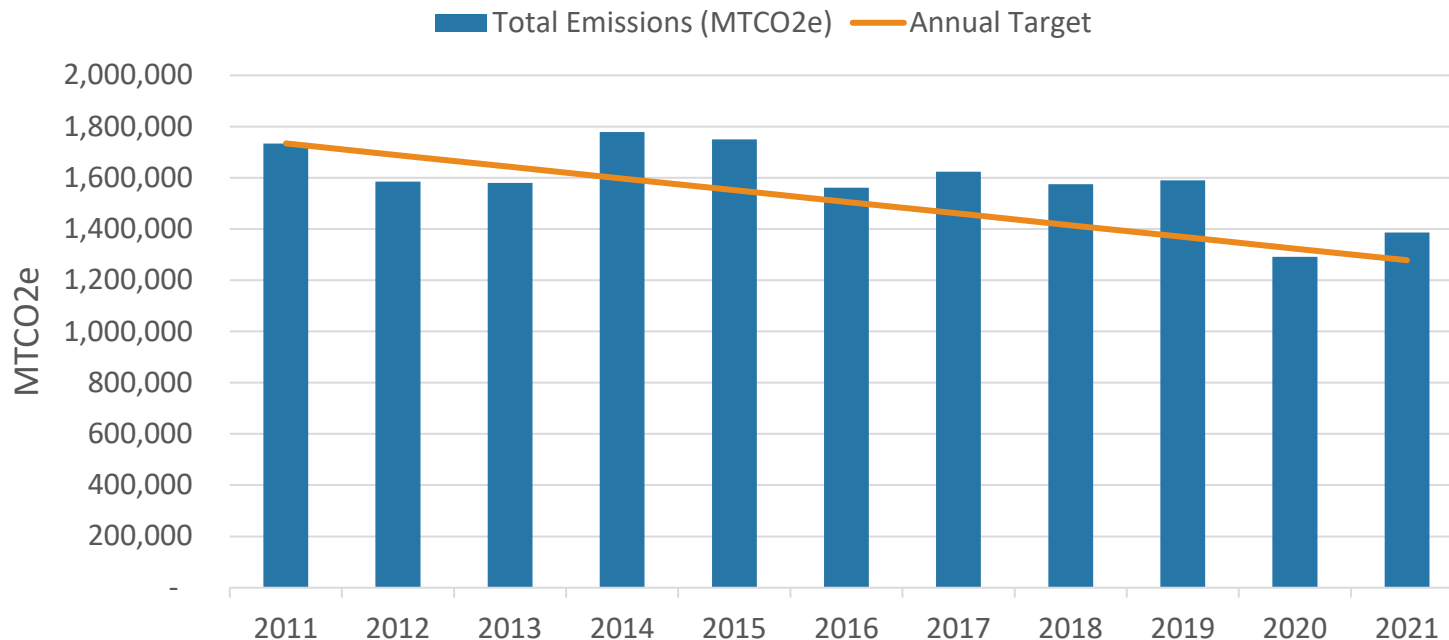
#	Action	Action Type	Impact	Investment	Co-Benefits	Lead	Timeframe
Strategy C.1: Mitigate emissions and plan for the long-term impacts of climate change.							
C.1.1	Climate vulnerability assessment. Perform a climate vulnerability assessment to understand long-term risks and vulnerabilities associated with climate change and identify next steps in terms of enhancing resiliency.	Analysis / Planning	🏢🏢	🌱	🏢	CD	2021-2022
C.1.2	King County Cities Climate Collaboration (K4C). Continue participating in the King County Cities Climate Collaboration to support the achievement of the countywide K4C goals.	Policy / Staff	🏢🏢	💰	🏢	CD	Ongoing
C.1.3	State advocacy. Advocate for state-level policies and funding that support the achievement of the plan goals.	Policy	🏢🏢		🏢	CMO	Ongoing

Community GHG Emissions

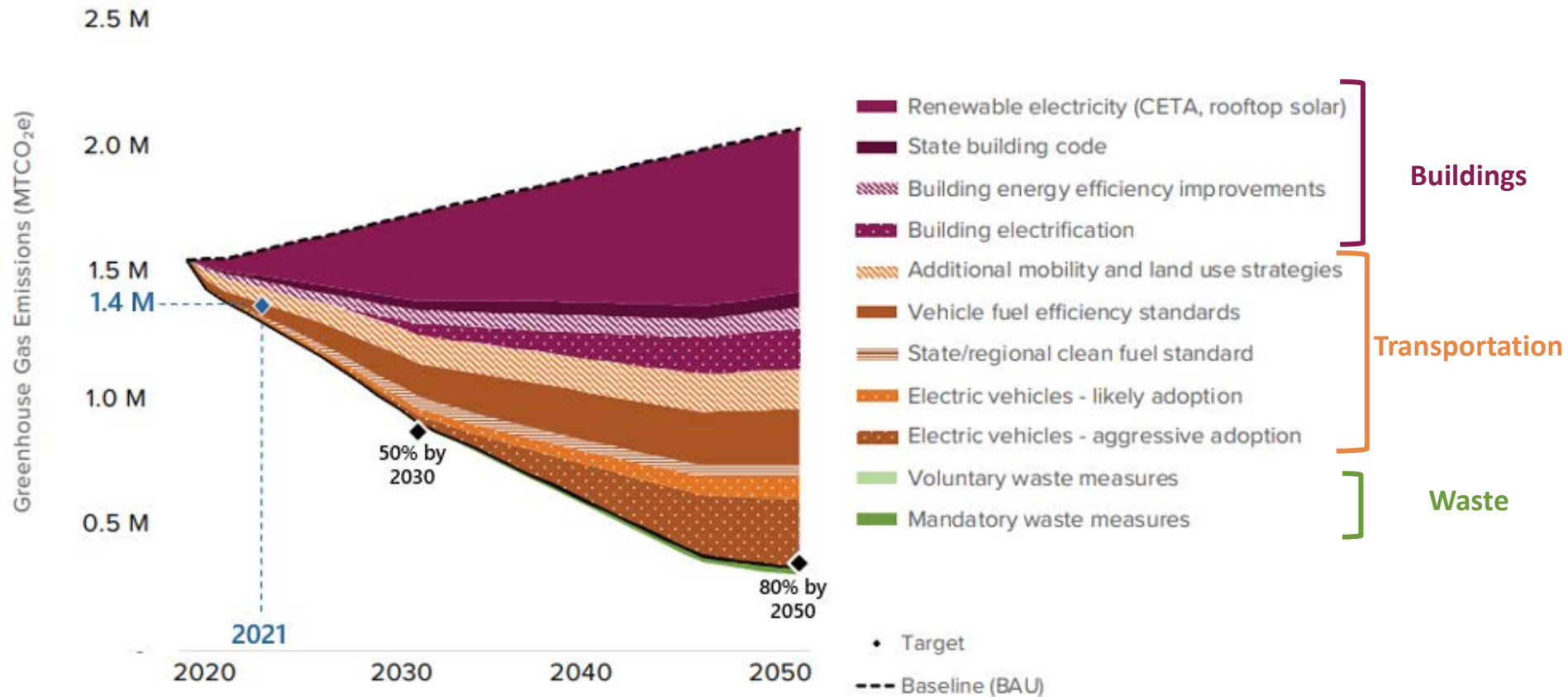
- GHG emissions decreased 20% between 2011-2021, despite adding 28,000 new residents and 24,000 new jobs.
- Community GHG emissions are trending in the right direction, but slightly over the target.













Community-wide GHG Emissions



GHG Emissions Progress - Community



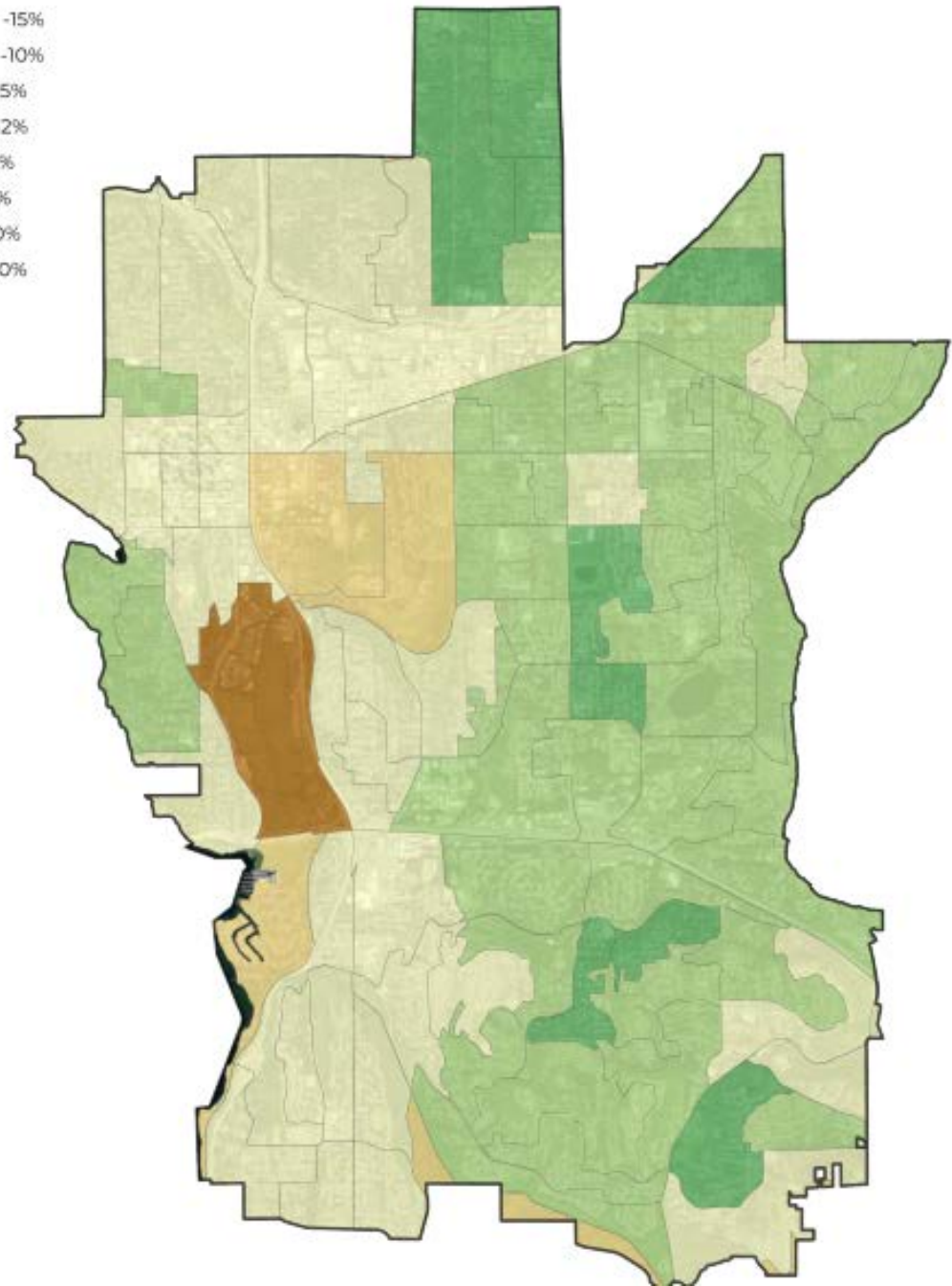
Community Progress Summary

2030 Short-Term Targets		2011 - 2021	Progress Update	
	50% reduction in community GHG Emissions.		20%	↓ Trending toward target
	60% of residents commuting alone	2016-2020 average	58%	↓ Trending toward target
	65% of workers commuting alone	2016-2020 average	71%	↓ Trending toward target
	25% registered electric vehicles		3%	≡ No change
	20% reduction in per capita passenger car VMT		30%	↓ Exceeded target
	75% of jobs within ¼ mile of a frequent transit stop	2019	73%	≡ No change
	50% of housing within ¼ miles of a frequent transit stop	2019	43%	≡ No change
	80% renewable energy sources		51%	↑ Trending toward target
15% reduction in energy use		8%	↓ Trending toward target	
	50% recycling rate (zero-waste)		42%	≡ No change
	38% citywide tree canopy cover	2019	39%	↑ Trending toward target
	80% of residents living within 1/3 mile of a park, open space, and/or trail	2020	73%	≡ No change
	TBD Stream Health (metric TBD)	2023	TBD	Watershed Management Plan is 60% complete.

Tree Canopy Change

Neighborhoods with dense tree canopy grew significantly (e.g. Bridle Trails and Cougar Mountain), but tree canopy declined in nearly half of the city.

URBAN TREE CANOPY CHANGE
BY CENSUS BLOCK GROUPS








Plan Implementation Progress

Sustainable Bellevue: 2021 - 2025 Environmental Stewardship Plan

Summary of Implementation Progress

July 2022

Status	# of Actions	Description	% of Total
 Started	32	Work has started / implementation is partially complete	41%
 Ongoing	26	Work has been incorporated into ongoing operations	33%
 Complete	4	Work has been completed	5%
 Not started	16	Work has not yet begun	21%
 Barrier	0	Need to re-strategize approach. There is a barrier to implementing the action.	0%
Total	78		100%



Thank You



SUSTAINABLE
BELLEVUE