

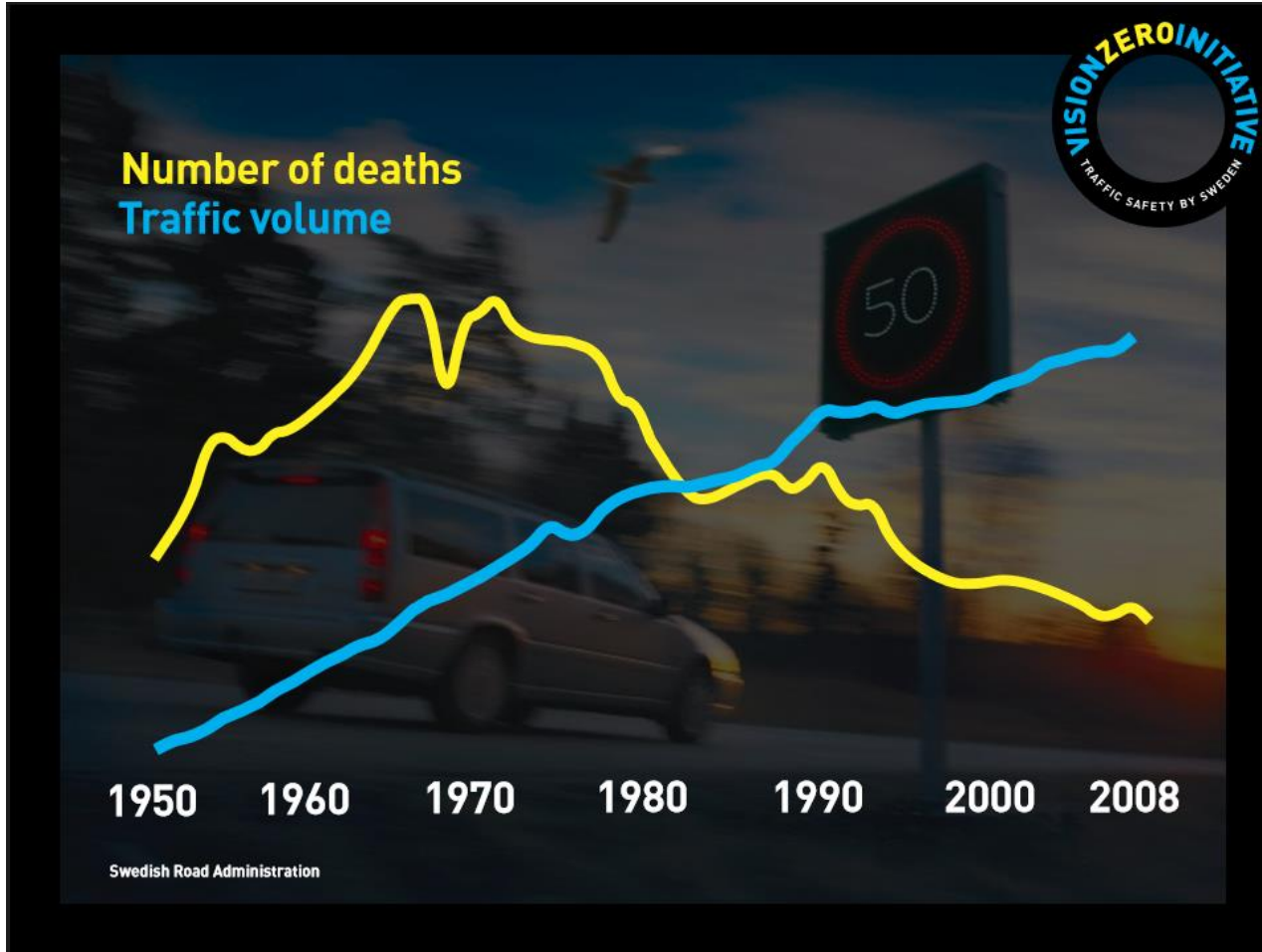
Bellevue Vision Zero Action Plan



YouthLink Council Meeting
November 7, 2018

Franz Loewenherz
Principal Transportation Planner
City of Bellevue

What is Vision Zero?



A multi-national traffic safety strategy to eliminate all traffic fatalities and severe injuries, while increasing safe, healthy, equitable mobility for all.

- Recognizes traffic fatality and injuries are the results of crashes and are preventable
- Sets timeline to aggressively eliminate both
- Focused on strategic and measurable goals, and driven by data
- Takes a multidisciplinary approach

Traffic deaths in New York City (the earliest U.S. adopter of Vision Zero) are down 22% since 2013, just before the city launched Vision Zero. Pedestrian deaths dropped to a record low in New York City in 2015.

Why do we need a Vision Zero Action Plan?

Hit-and-run driver nearly kills woman on bike in Bellevue

BY KOMO NEWS | WEDNESDAY, MARCH 23RD 2016



Car strikes, kills toddler in stroller in Bellevue

Originally published September 29, 2015 at 11:03 am | Updated September 30, 2015 at 10:27 am



Suspected DUI crash leaves two injured in Bellevue

Travis Pittman, KING 4:01 AM, PST February 23, 2017



(Photo: Pittman, Travis)

CONNECT TWEET LINKEDIN GOOGLE+ PINTEREST

BELLEVUE, Wash.-- Two people were taken to the hospital after a head-on crash involving a suspected drunk driver Thursday morning.

It happened before 1 a.m. on 148th Avenue NE between Main Street and NE 8th Street.

Bellevue Police say the suspected DUI driver was taken to Harborview Medical Center. The driver of the other car was taken to Overlake Medical Center. Their conditions were not immediately known.

Copyright 2017 KING

Bellevue Way closed, woman sent to hospital in life-threatening condition after collision

POSTED 5:36 PM, OCTOBER 5, 2016, BY Q13 NEWS STAFF

FACEBOOK 52 TWITTER REDDIT GOOGLE+ PINTEREST EMAIL

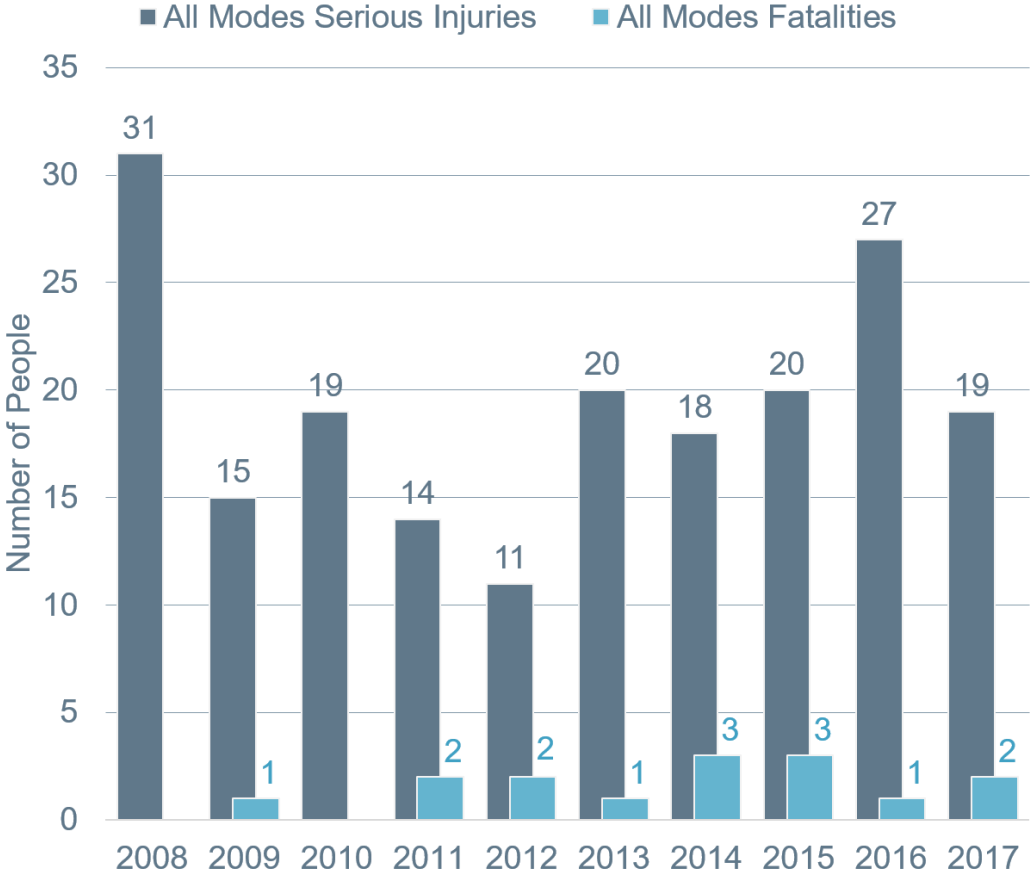
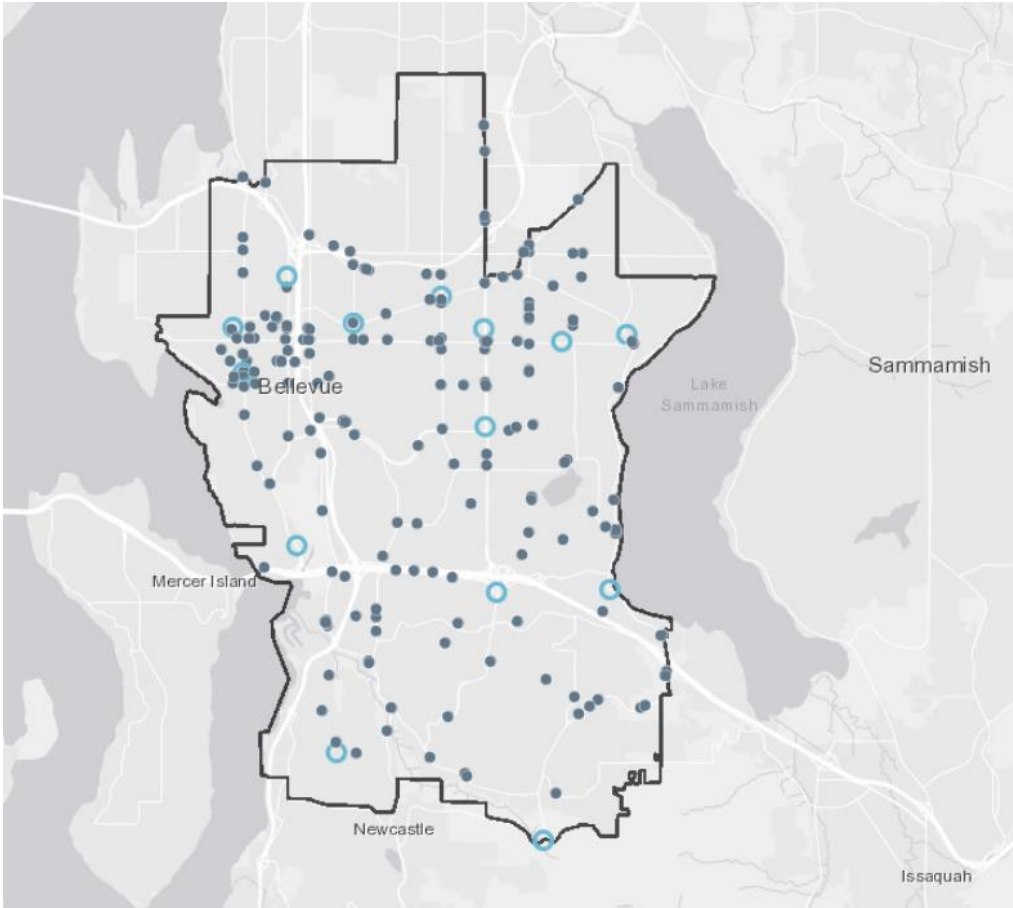
This is an archived article and the information in the article may be outdated. Please look at the time stamp on the story to see when it was last updated.

BELLEVUE, Wash. – A major road was closed and a woman was sent to the hospital with life-threatening injuries after a crash in Bellevue on Wednesday afternoon, police said.

Police said the woman was injured in a collision between a vehicle and a pedestrian.



Bellevue: Collision Related Fatalities & Serious Injuries



There were 1,495 police reported collisions in the City of Bellevue in 2017, which resulted in 467 injuries. Every 17 days, someone is killed or seriously injured on Bellevue's streets.



Bellevue Data

Who/Vulnerable Populations:

- 43.3% of fatalities and serious injuries involve people walking or bicycling.
- People walking are involved in 2.7% of all collisions in Bellevue but they account for 28.2% of all fatalities and serious injuries.
- People riding bicycles are involved in 1.8% of all collisions in Bellevue but they account for 15.1% of all fatalities and serious injuries.

How:

- Top behaviors contributing to fatal and serious injury collisions: 39% were due to drivers not granting right-of-way, 15% were due to impairment, 11% were due to inattention, 8% were due to speed, and 8% were due to improper movement. 19% were due to other factors.
- One in 14 pedestrians killed or seriously injured is hit by a driver under the influence of alcohol or drugs.

When/Where:

- 91.7% of fatal and serious injury collisions in Bellevue occur on arterials, which account for only 33.1% of the City's streets.
- City streets with a posted speed of 35 MPH or more see 40.5% of fatalities and serious injuries but account for only 12.5% of streets in Bellevue.

Traffic Fatalities in Crashes Involving Speed

Traffic Fatalities in Crashes Involving Speed, 2016

Filtering the Data

Hover over this box for more information

Person Type Filter

Occupant

Non-Occupant

Month Filter

Jan

Feb

Mar

Apr

May

Jun

Jul

Aug

Sep

Oct

Nov

Dec

Day Filter

Sun

Mon

Tue

Wed

Thu

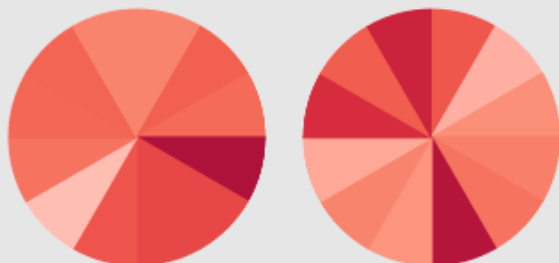
Fri

Sat

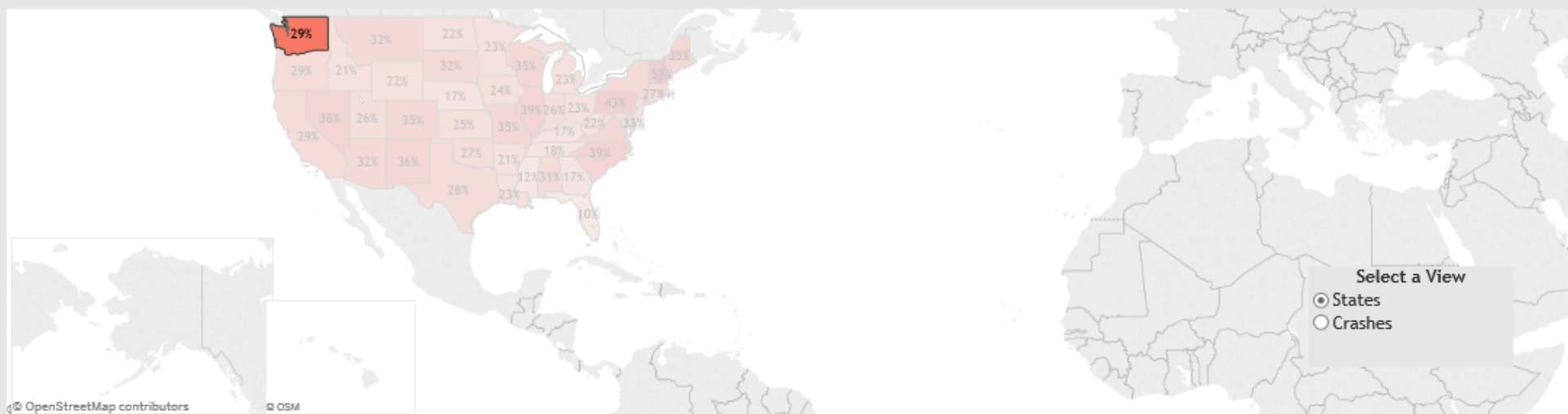
Hour of Day Filter

a.m.

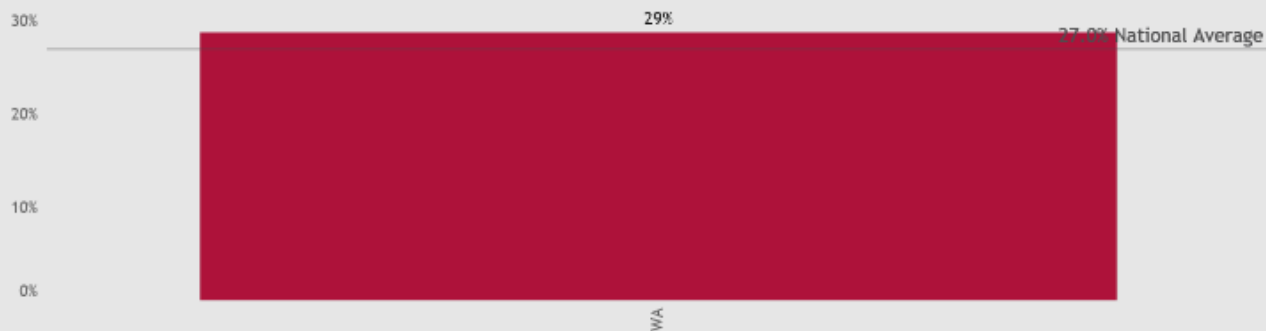
p.m.



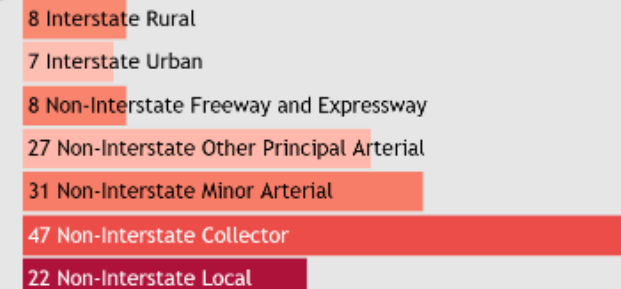
Percentage of Traffic Fatalities that were Speeding-Related, by State



154 (28.7%) of 537 Currently Filtered Fatalities were Speeding-Related



Speeding-Related Fatalities by Roadway Type



Give Us Your Feedback

Data Source: Fatality Analysis Reporting System (FARS) - 2016 Annual Report File

Collisions Involving Teenagers

KNOW THE FACTS



Teens have an **89.2%** chance of being involved in a car crash during their first 3 years of driving



Motor vehicle crashes are the **leading cause of death** of 15- to 20-year-olds



20% of deaths among vehicle passengers of all ages occur while a teen is driving



50%

of teen driver fatality crashes involve a **single** vehicle

Data from: "Driver Education and Teen Crashes and Traffic Violations in the First Two Years of Driving in a Graduated Licensing System." by Shell et.al., tinerack.com.

Bellevue Collisions Involving Teenagers

Bellevue teen seriously injured in rollover crash



Bellevue Cyclist Seriously Injured In Collision With SUV

The teen was riding her bike in the Factoria neighborhood when she collided with a driver in an SUV.



Bellevue teen wrecks family car one week after getting license



Bellevue Teen Dead In Suspected DUI Crash

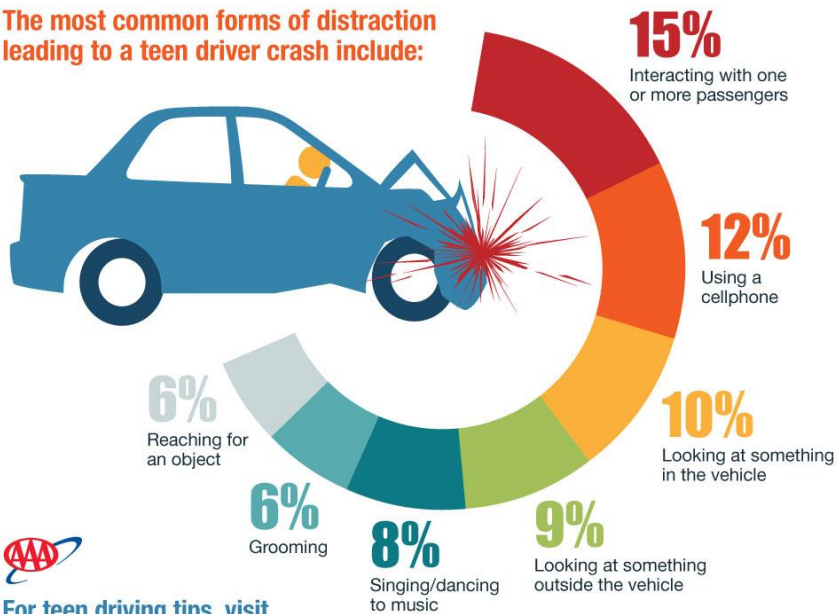
The 19-year-old died after his car hit a tree Saturday night in the Crossroads area.



Distracted Driving

6 OUT OF 10 teen crashes involve driver distraction.

The most common forms of distraction leading to a teen driver crash include:



For teen driving tips, visit TeenDriving.AAA.com

THE STATISTICS OF TEENS AND DISTRACTED DRIVING

The Text Can Wait

Fatalities increased
32%

From distracted driving in Washington state.

Crash risk increases **23X** when using your phone.

1 out of **10** drivers are distracted while driving.

58% of **1,700** Teen drivers were involved in moderate to severe crashes as a result of distraction.

5 seconds is the average time to take your eyes off the road to text.

It's also enough time to cover the length of a football field when driving at 55mph.

PLG
PREMIER LAW GROUP
FLLC

Have questions about a Vehicle Accident? Talk to our team for a FREE consultation

www.PremierLawGroup.com
(206)-285-1743

Adults Are Just As Guilty

Before you blame the naiveté and inexperience of youth, know that teens **aren't** the only offenders. According to an AT&T commuter survey:

FACT #1 **98%** said sending a text or email while driving isn't safe.



FACT #2 **49%** of adults admitted to texting while driving.



FACT #3 **40%** of those who admitted to texting while driving called it a "habit."



Sources: 1. AT&T Commuter Poll; Virginia Tech Transportation Institute Research; National Safety Council; Harvard Center for Risk Analysis Study
2. att.com 3. Ad Council; Virginia Tech



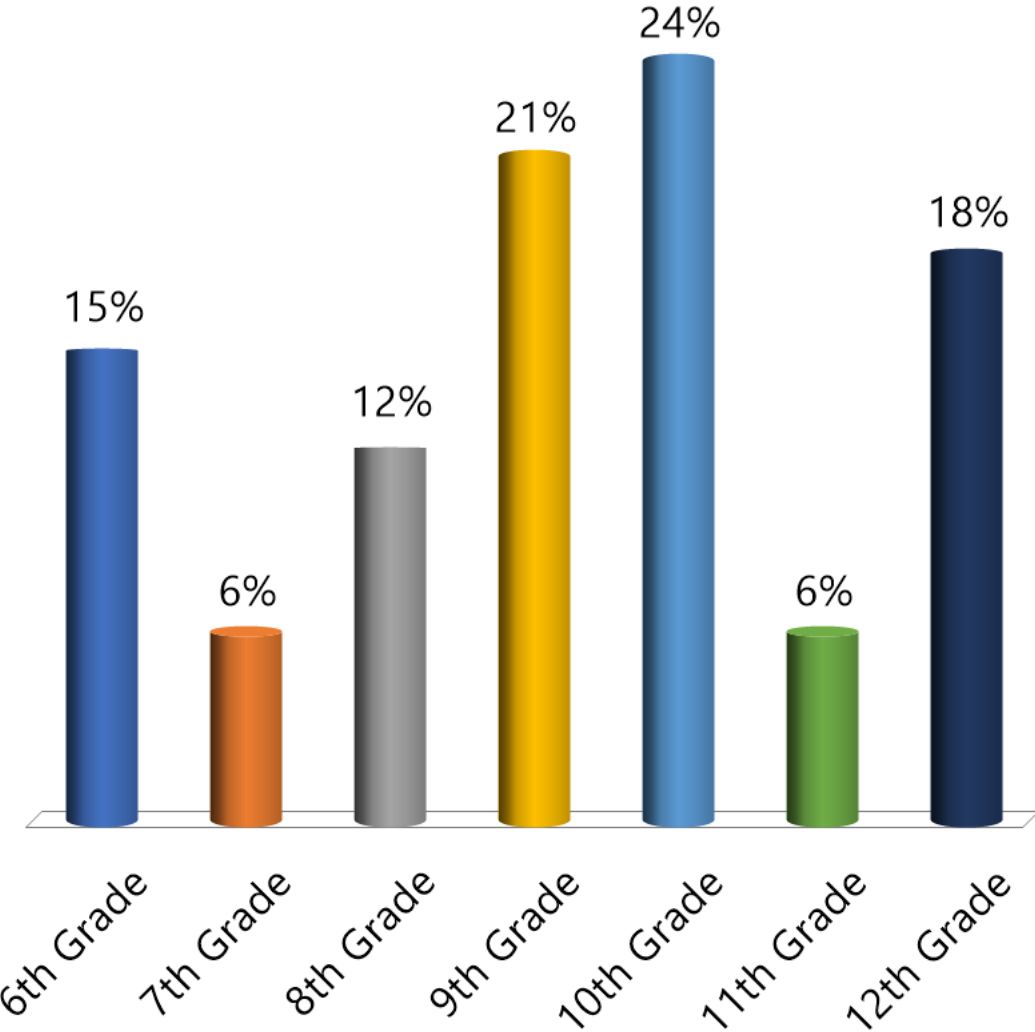
Nationwide
On Your Side

Key Pad Polling



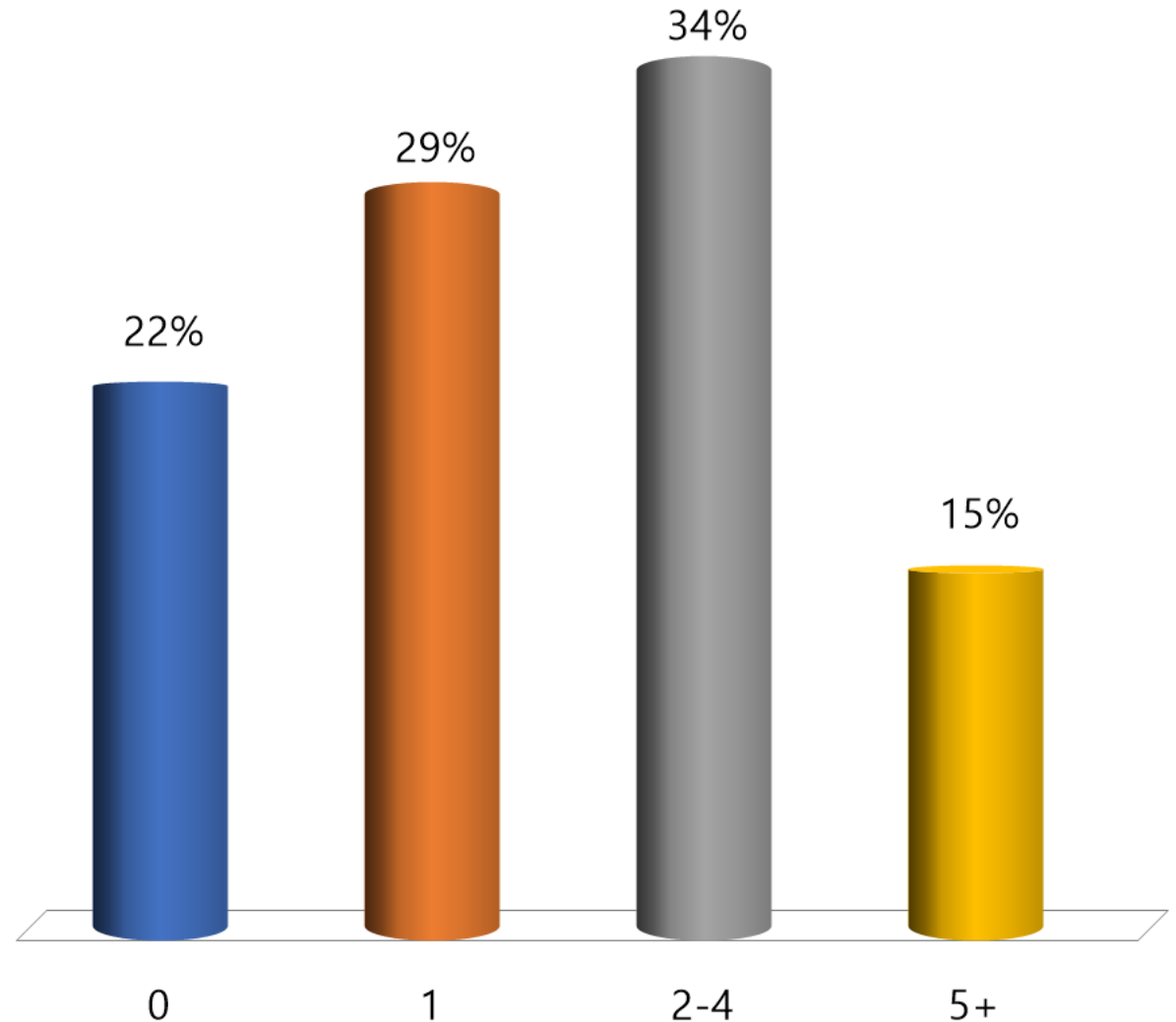
Please indicate your grade.

- A. 6th Grade
- B. 7th Grade
- C. 8th Grade
- D. 9th Grade
- E. 10th Grade
- F. 11th Grade
- G. 12th Grade



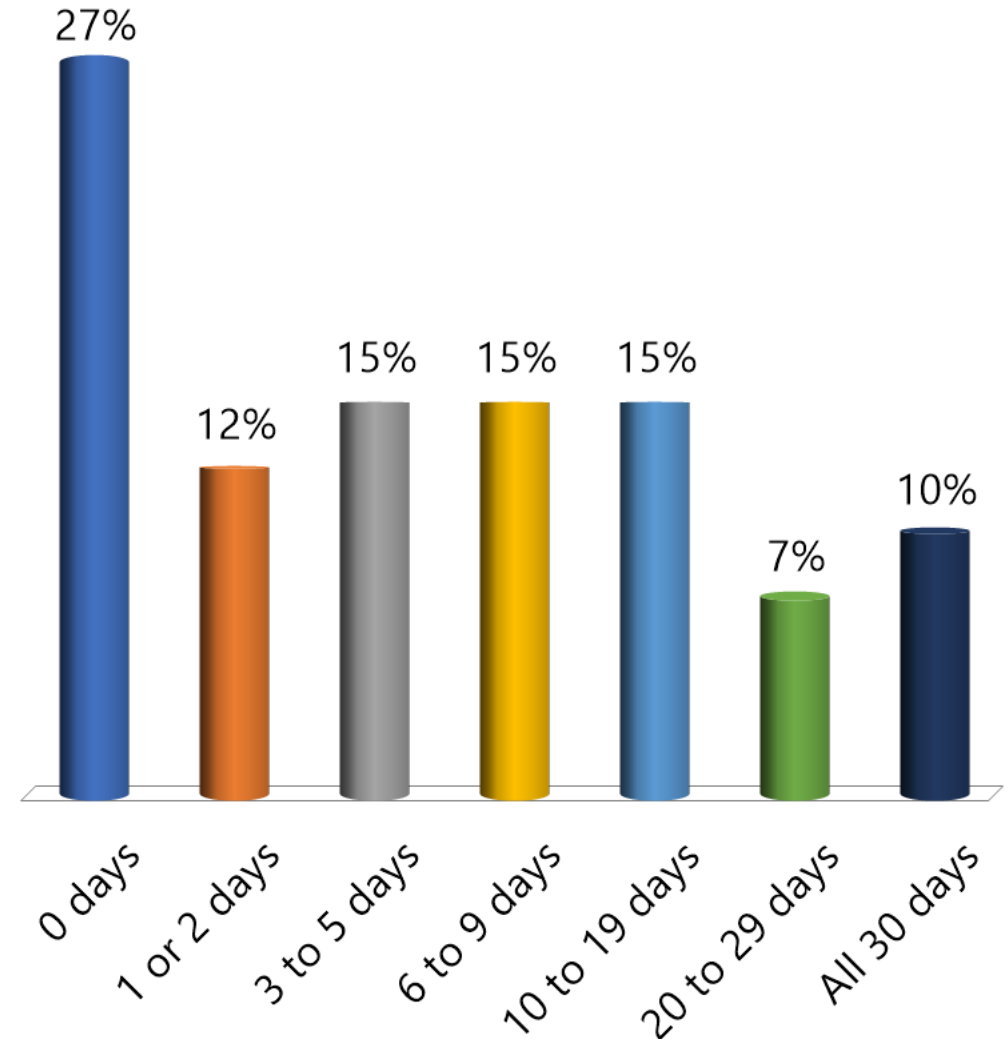
How many people do you know personally who have been involved in a traffic collision in the City of Bellevue?

- A. 0
- B. 1
- C. 2-4
- D. 5+



During the past 30 days, on how many days did you ride in a car or other vehicle driven by someone who was texting or emailing?

- A. 0 days
- B. 1 or 2 days
- C. 3 to 5 days
- D. 6 to 9 days
- E. 10 to 19 days
- F. 20 to 29 days
- G. All 30 days



King County Results – Riding with a Texting Driver

Source: Washington State Healthy Youth Survey

Grade 8

0 days	53.7% ± 3.7% 1,073
1 or 2 days	19.4% ± 2.1% 388
3 to 5 days	8.5% ± 1.5% 169
6 to 9 days	6.1% ± 1.3% 121
10 to 19 days	4.9% ± 1.1% 97
20 to 29 days	3.2% ± 1.1% 64
All 30 days	4.4% ± 1.0% 87

Grade 10

0 days	42.9% ± 4.7% 1,006
1 or 2 days	21.6% ± 1.8% 507
3 to 5 days	12.5% ± 1.6% 293
6 to 9 days	7.3% ± 1.4% 171
10 to 19 days	7.3% ± 1.9% 171
20 to 29 days	3.9% ± 0.8% 91
All 30 days	4.5% ± 1.3% 105

Grade 12

0 days	39.2% ± 3.4% 631
1 or 2 days	21.5% ± 1.6% 347
3 to 5 days	14.4% ± 1.6% 232
6 to 9 days	7.3% ± 1.7% 117
10 to 19 days	7.9% ± 1.1% 128
20 to 29 days	4.5% ± 0.8% 72
All 30 days	5.2% ± 1.2% 84

Variable questions:

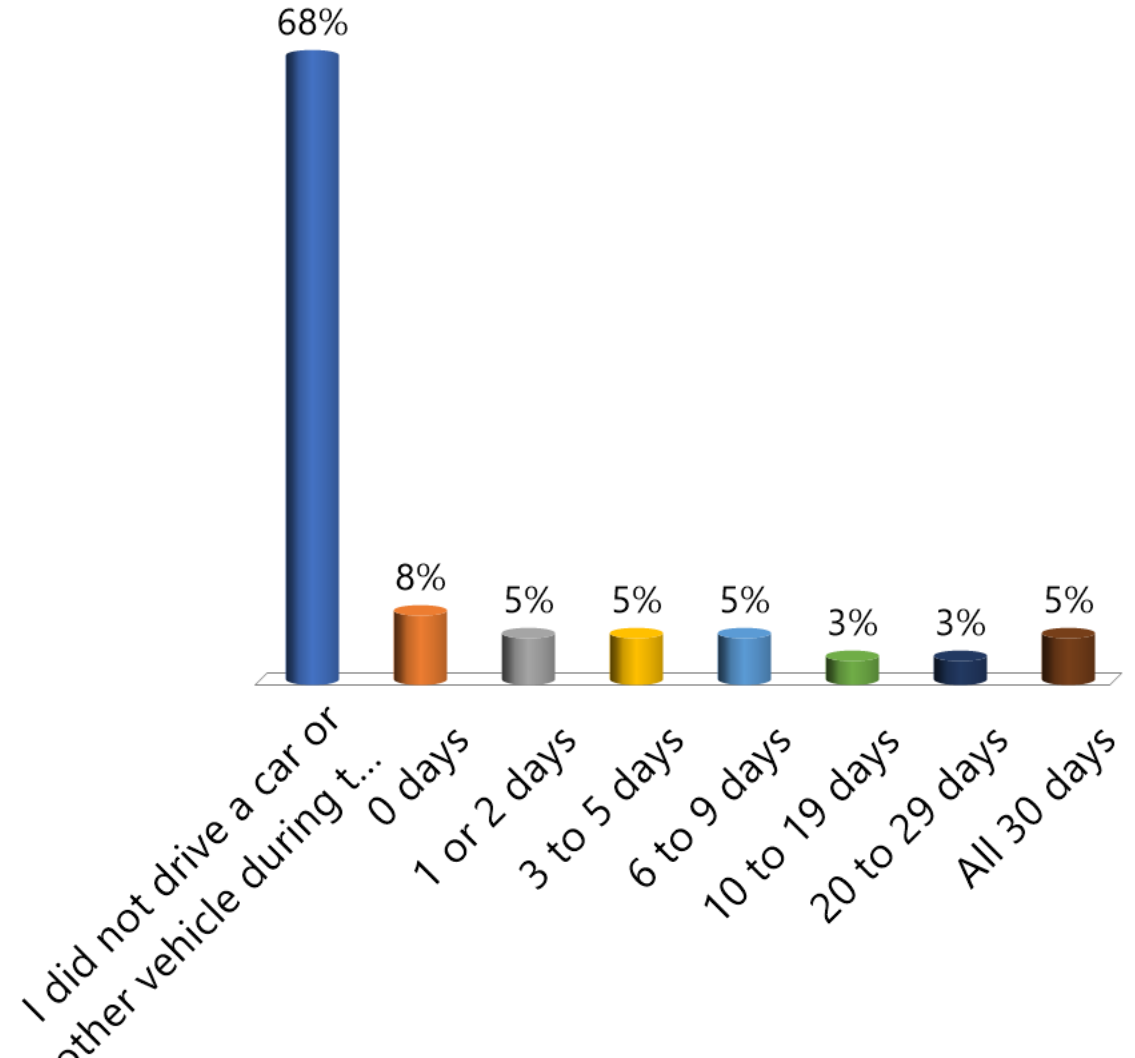
- During the past 30 days, on how many days did you ride in a car or other vehicle driven by someone who was texting or emailing? [H109]

Cells contain:

- Percentage
- 95% Confidence Interval
- # of Respondents

During the past 30 days, how many days did you text or email while driving a car or other vehicle?

- A. I did not drive a car or other vehicle during the past 30 days.
- B. 0 days
- C. 1 or 2 days
- D. 3 to 5 days
- E. 6 to 9 days
- F. 10 to 19 days
- G. 20 to 29 days
- H. All 30 days



King County Results – Texting While Driving

Source: Washington State Healthy Youth Survey

Grade 8

I did not drive a car or other vehicle during the past 30 days.	84.8% ± 2.3% 3,132
0 days	10.4% ± 1.7% 383
1 or 2 days	1.4% ± 0.3% 53
3 to 5 days	0.9% ± 0.4% 33
6 to 9 days	0.5% ± 0.2% 17
10 to 19 days	0.6% ± 0.2% 24
20 to 29 days	0.5% ± 0.2% 18
All 30 days	0.9% ± 0.4% 35

Grade 10

I did not drive a car or other vehicle during the past 30 days.	62.4% ± 5.0% 2,816
0 days	30.3% ± 4.4% 1,369
1 or 2 days	3.9% ± 0.8% 176
3 to 5 days	1.2% ± 0.4% 55
6 to 9 days	0.5% ± 0.3% 23
10 to 19 days	0.6% ± 0.3% 26
20 to 29 days	0.3% ± 0.1% 14
All 30 days	0.7% ± 0.3% 33

Grade 12

I did not drive a car or other vehicle during the past 30 days.	31.2% ± 5.6% 966
0 days	27.2% ± 1.5% 842
1 or 2 days	11.9% ± 1.6% 368
3 to 5 days	6.1% ± 1.0% 190
6 to 9 days	4.9% ± 1.1% 153
10 to 19 days	6.3% ± 1.3% 195
20 to 29 days	4.8% ± 1.1% 148
All 30 days	7.6% ± 1.3% 235

Variable questions:

- During the past 30 days, how many days did you text or email while driving a car or other vehicle? [H111]

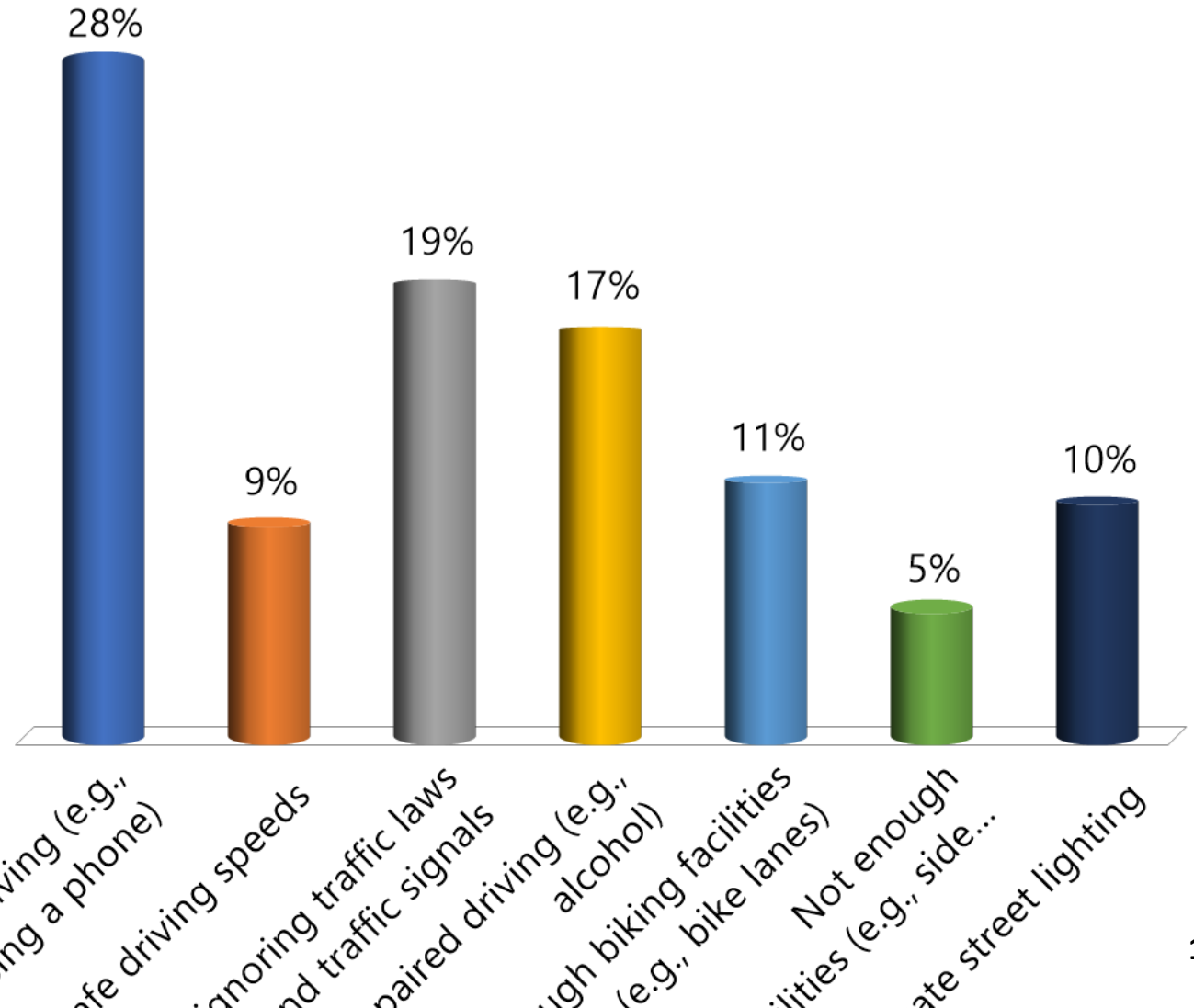
Cells contain:

- Percentage
- 95% Confidence Interval
- # of Respondents



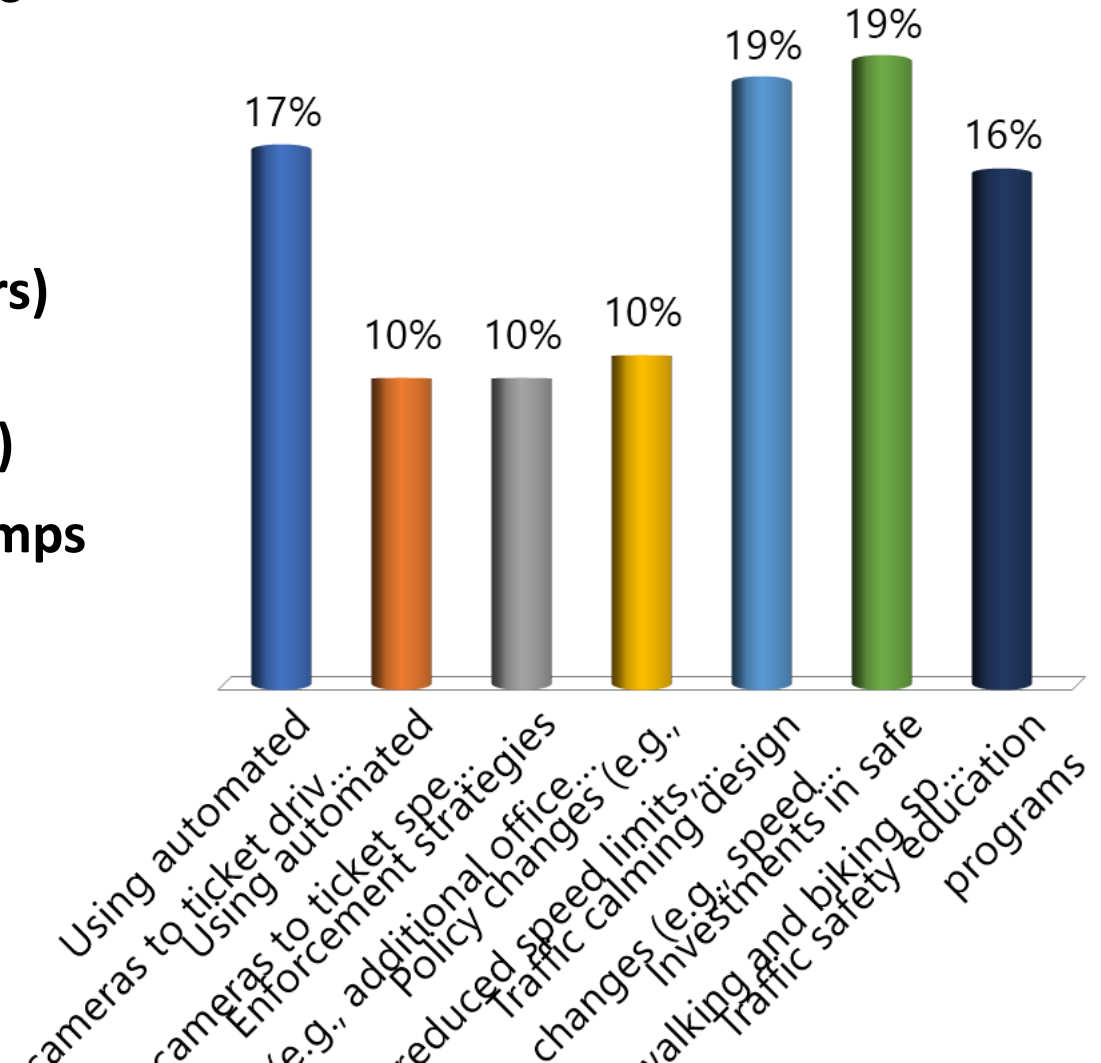
What do you think are the top three (3) challenges to moving safely around the City of Bellevue?

- A. Distracted driving (e.g., using a phone)
- B. Unsafe driving speeds
- C. People ignoring traffic laws and traffic signals
- D. Impaired driving (e.g., alcohol)
- E. Not enough biking facilities (e.g., bike lanes)
- F. Not enough walking facilities (e.g., sidewalks, crosswalks)
- G. Inadequate street lighting



Please select as many of the following Vision Zero strategies that you support.

- A. Using automated cameras to ticket drivers who run red lights
- B. Using automated cameras to ticket speeding drivers
- C. Enforcement strategies (e.g., additional officers)
- D. Policy changes (e.g., reduced speed limits, increased penalties against drivers who speed)
- E. Traffic calming design changes (e.g., speed humps and other treatments that slow down traffic)
- F. Investments in safe walking and biking space (e.g., new bike lanes and sidewalks)
- G. Traffic safety education programs



Personalized Vision Zero Pledge



Kate, Bellevue Resident

“Pedestrian crossings are for pedestrians! (please stop before them, not on them – message for drivers)”

Personalized Vision Zero Pledge



***“One second of
inattention could
change everything!”***

Personalized Vision Zero Pledge



***“Stop before crossing.
Don’t ring up phone
when driving. Life is
beyond everything.”***

Vision Zero Pledge Activity

VISION ZERO COMMUNITY PLEDGES | 1

HOW CAN YOU HELP?

Your opinions matter! The city wants to partner with you in creating a customized Vision Zero pledge that will help make Bellevue a safer place. It's fun, simple, and it'll make a difference in people's lives!

1. *Read* over the various pledges on the boards
2. *Choose* the pledges that best resonates with you
3. *Stick* the colored dots to your chosen pledges
4. *Remember & Apply* these pledges in your daily life

WHICH PLEDGES DO YOU LIKE?

Recognize that collisions are avoidable and my choices matter to the lives of others

47

Everyone has a role to play in reducing traffic deaths

13

Look out for others especially children, the elderly, people with disabilities, and people walking and biking

24

Slow down and look around, especially at intersections and driveways

32

Travel at safe speeds and follow the speed limit

27

VISION ZERO COMMUNITY PLEDGES | 2

Follow the rules of the road and remember to yield to pedestrians

25

Eyes on the road/sidewalk and not on my phone

42

Drive as if your family lives here

15

Be extra careful when traveling on wide, fast roads

3

Prioritize the people around me over my own schedule

8

Obey all traffic laws - pedestrian, biking, and driving

26

Only drive while sober, alert, and free of distractions

31

Respect that people walking have the right of way

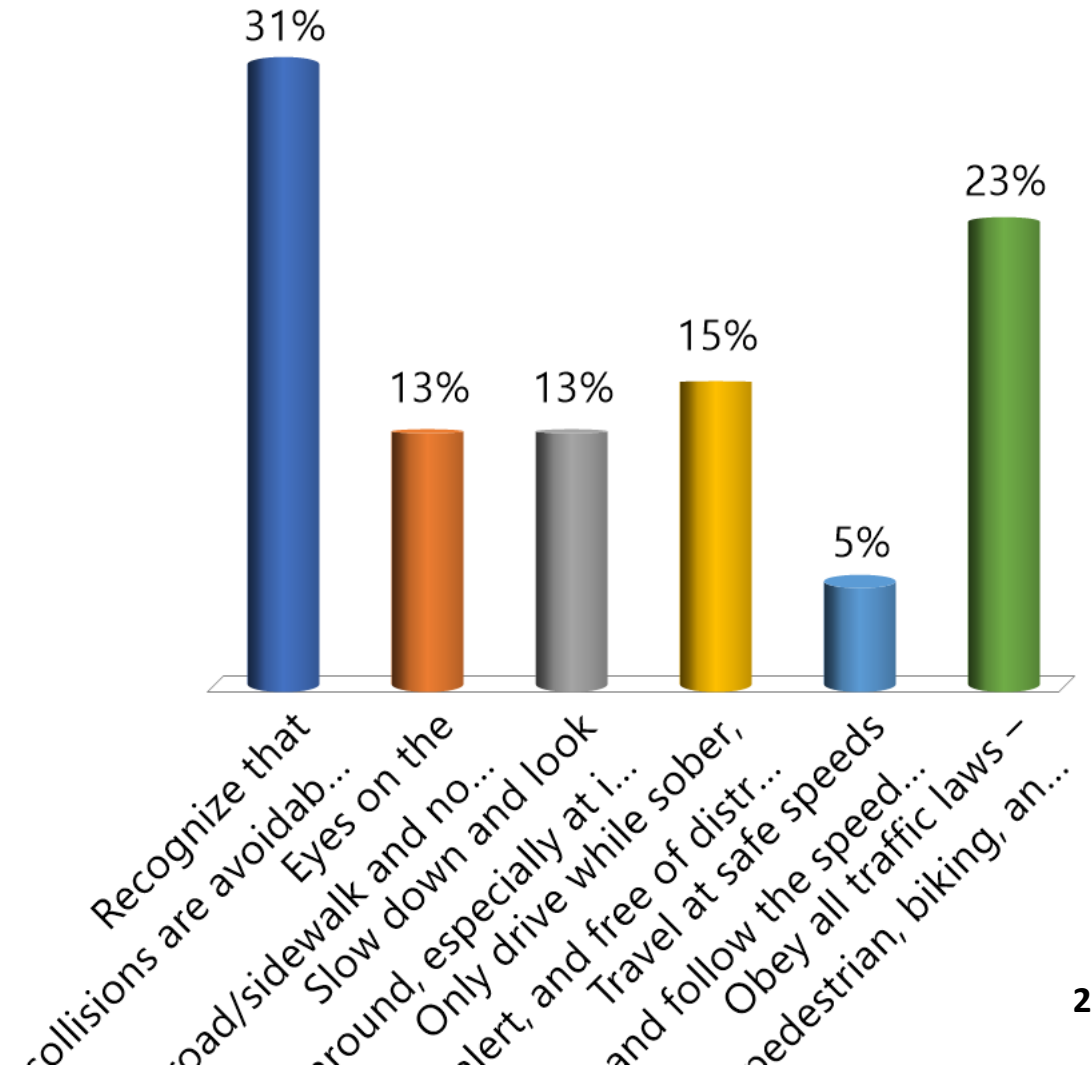
24

Share the road with all users

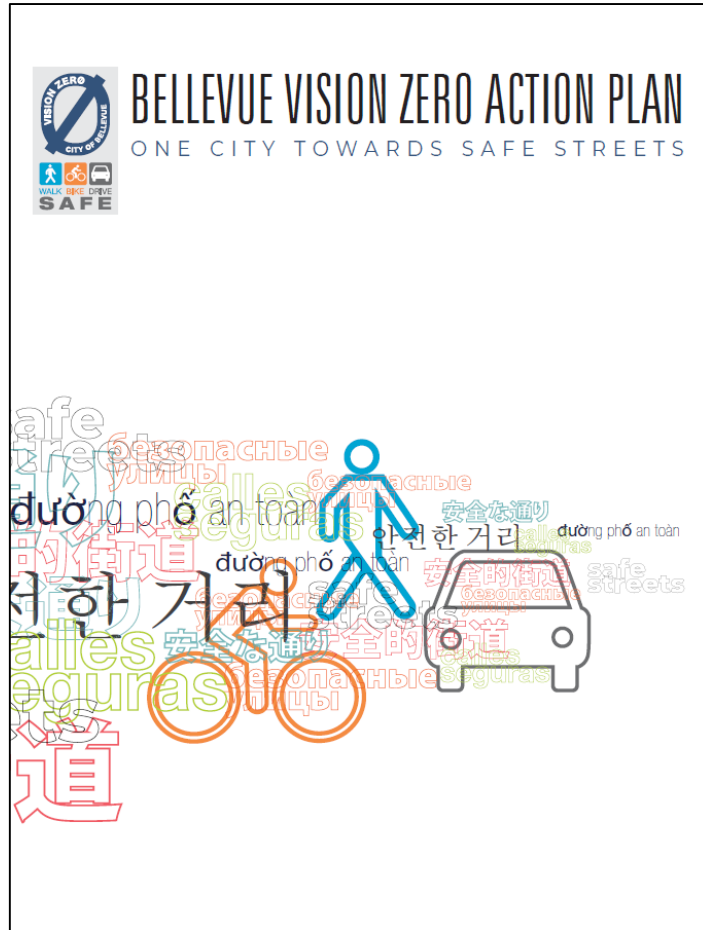
22

Which one (1) of the following statements in support of safe streets resonates for you as a Vision Zero Pledge?

- A. Recognize that collisions are avoidable and my choices matter to the lives of others
- B. Eyes on the road/sidewalk and not on my phone
- C. Slow down and look around, especially at intersections and driveways
- D. Only drive while sober, alert, and free of distractions
- E. Travel at safe speeds and follow the speed limit
- F. Obey all traffic laws – pedestrian, biking, and driving



For More Information



Franz Loewenherz
Principal Transportation Planner
floewenherz@bellevuewa.gov
425-452-4077